

VA71653C - Coverage Prediction

POR Details:

Objective = Coverage

Type = Cell Split

Offload sector(s) = VA11363A1, VA11363A2

Site Details:

PIVA068 / Jefferson Davis Hwy

3022 Jefferson Davis Highway, Richmond, VA 23234

Rad center = 185'

Azimuth = (20/120/270)

EDT = 2/2/2

Config = 67D98M



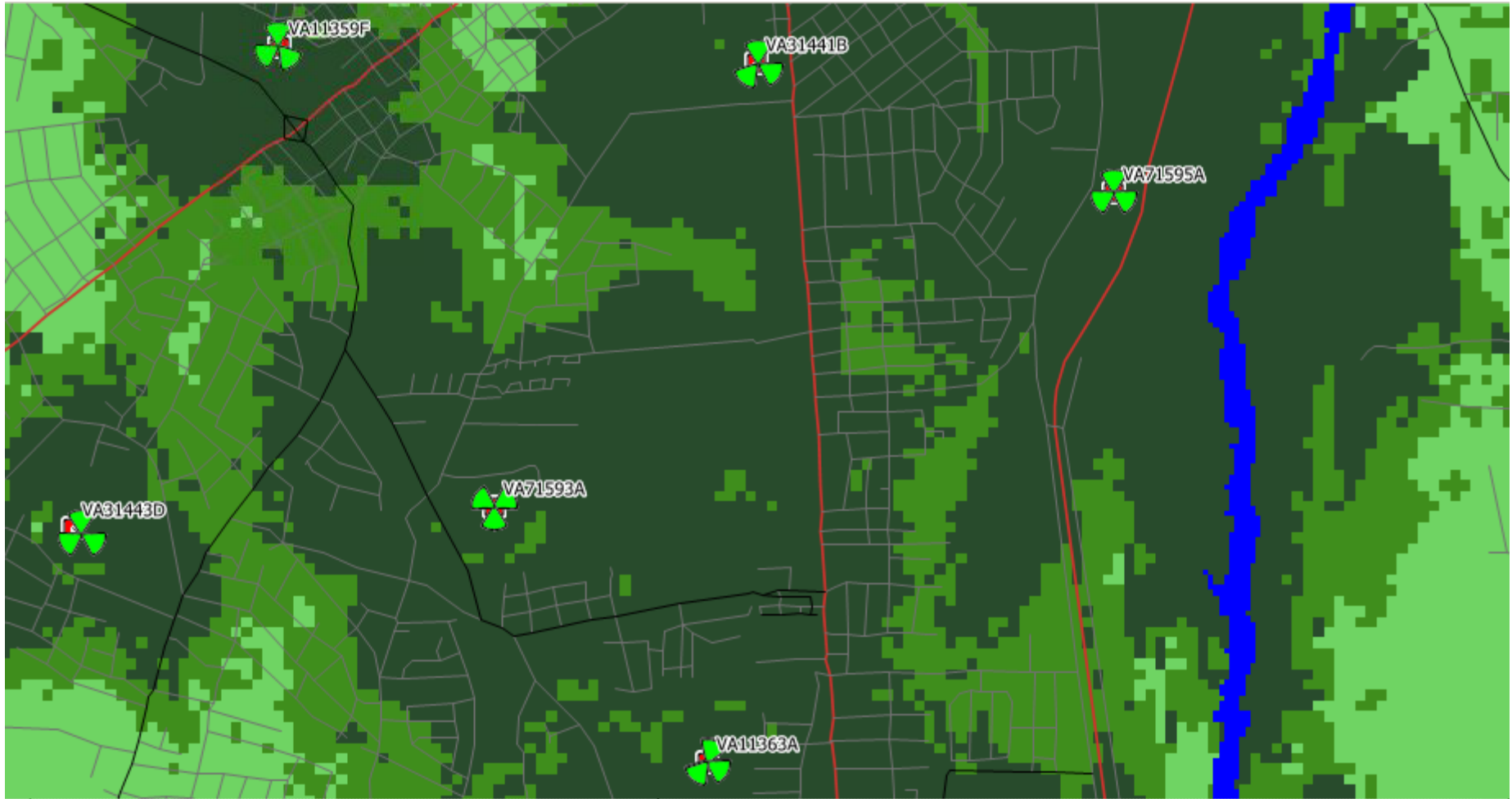
Dark Green	>= -91 dBm (in-bldg commercial)
Medium Green	>= -97 dBm (in-bldg residential)
Light Green	>= -114 dBm (in-vehicle)
Very Light Green	>= -120 dBm (outdoor)

L21/L19 Policy 4.2

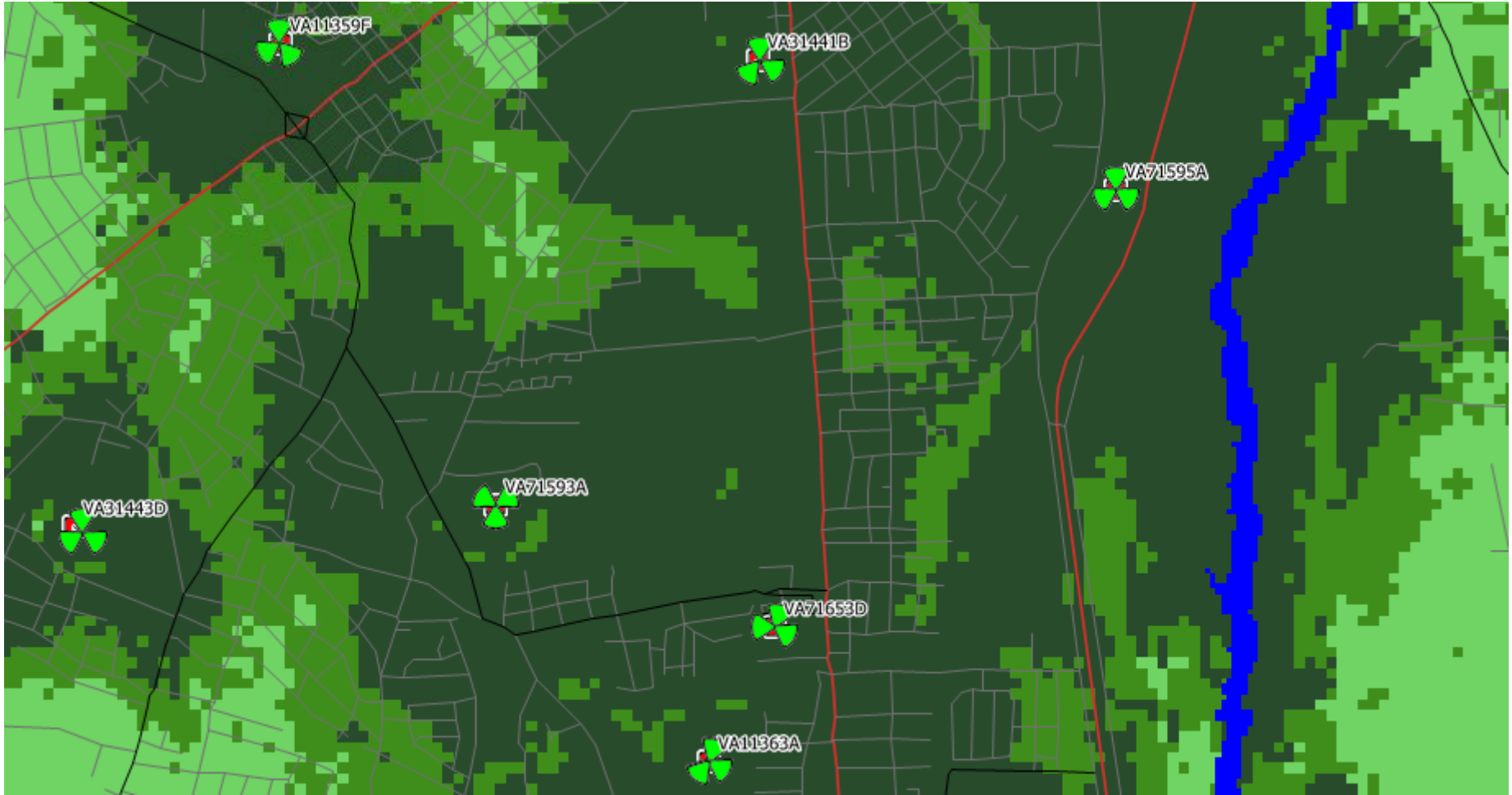
Dark Green	>= -88 dBm (in-bldg commercial)
Medium Green	>= -97 dBm (in-bldg residential)
Light Green	>= -112 dBm (in-vehicle)
Very Light Green	>= -118 dBm (outdoor)

L700 Policy 4.2

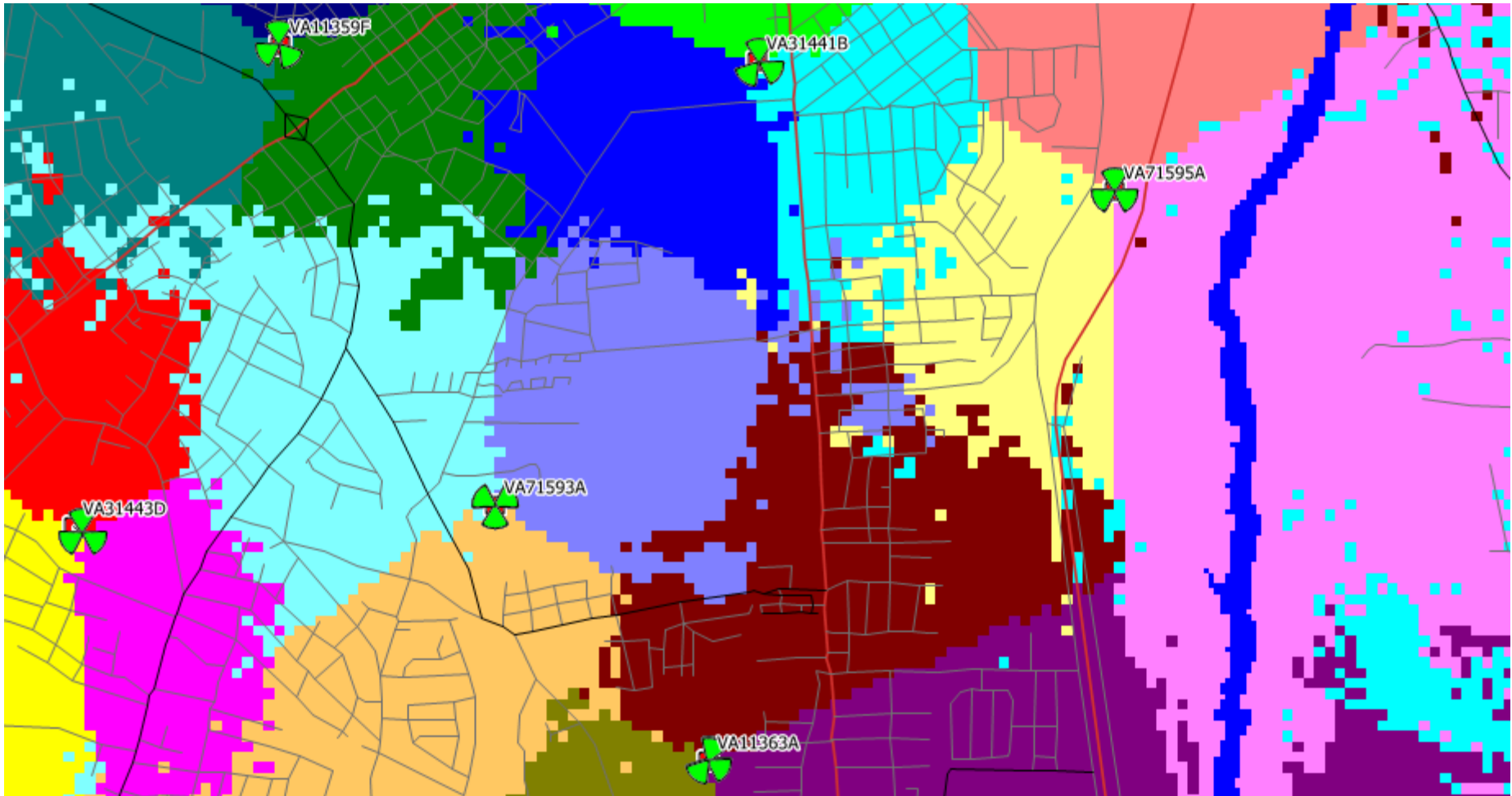
Existing L21 coverage



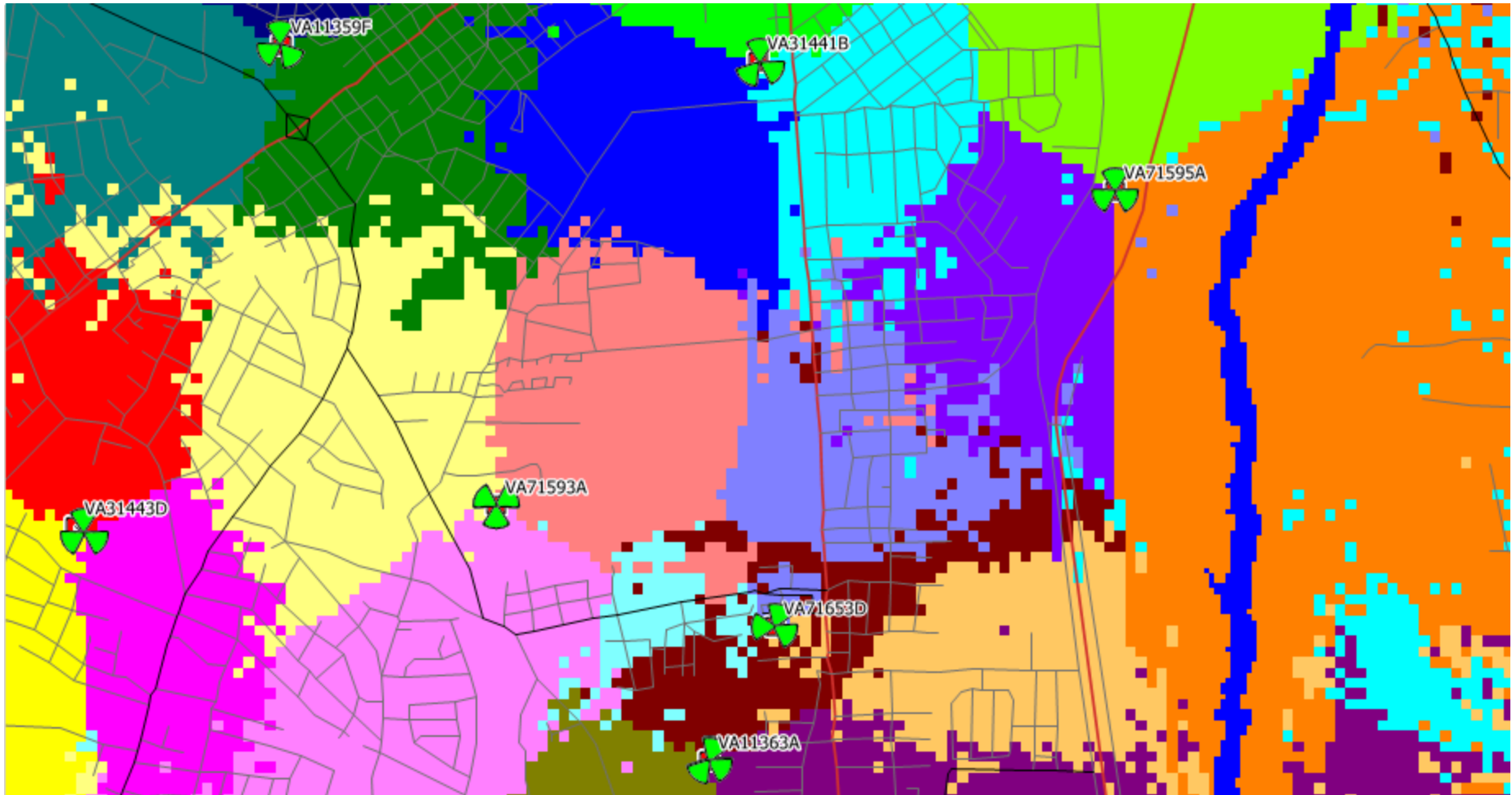
L21 coverage with VA71653D



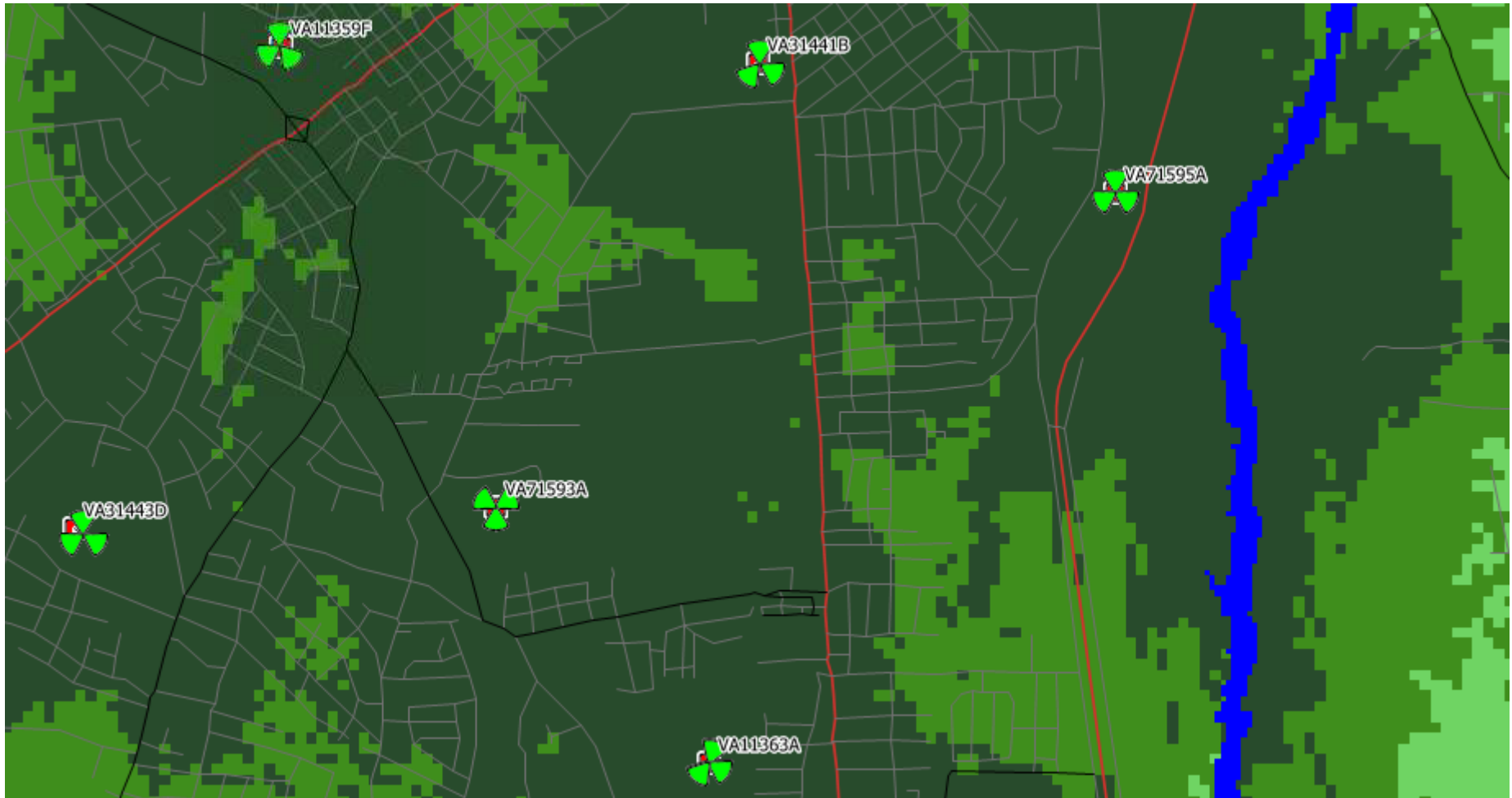
Existing L21 best server



L21 best server with VA71653D



Existing L7 coverage



L7 coverage with VA71653D

