

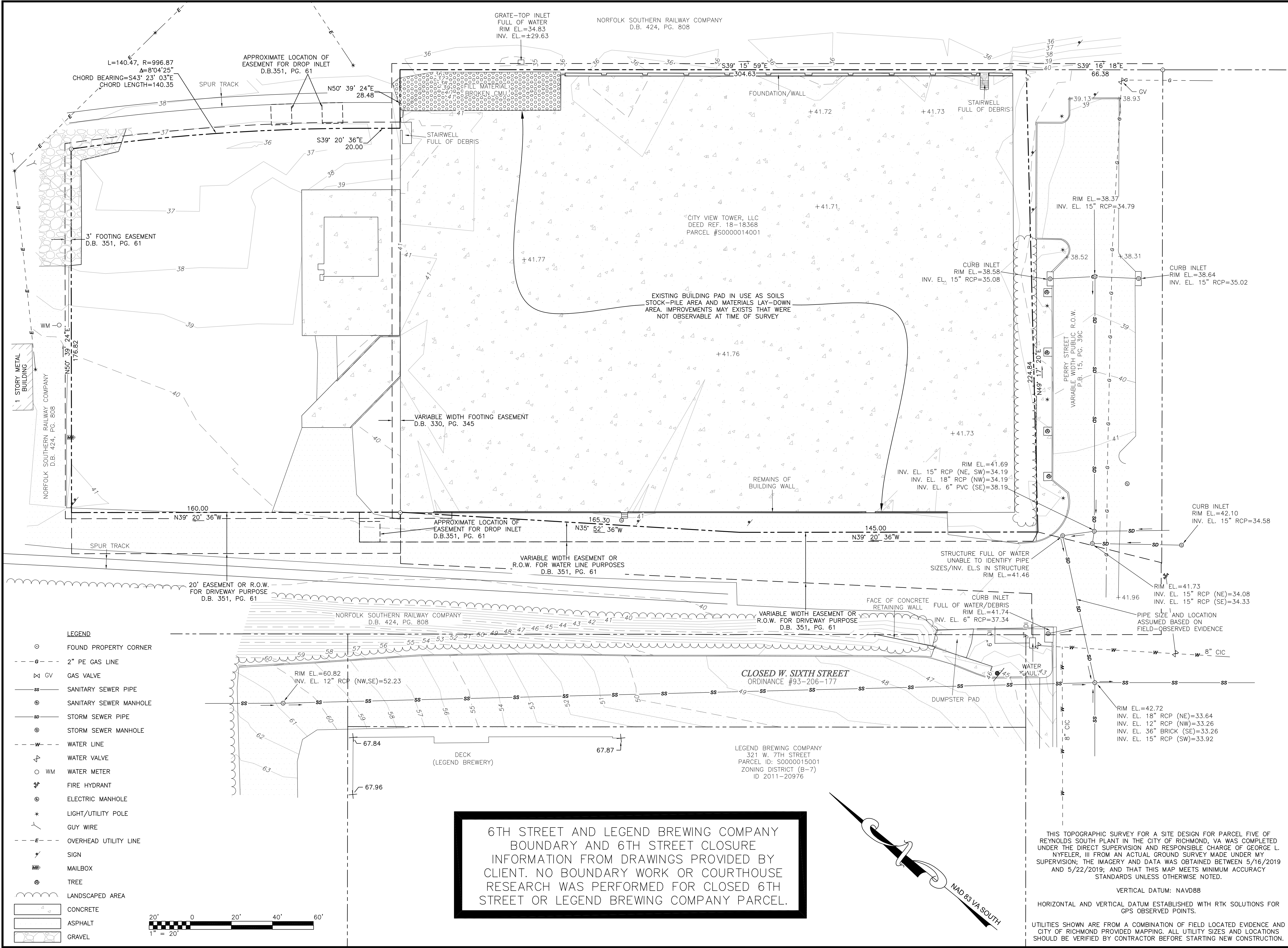


NYFELER ASSOCIATES
 LAND SURVEYING & MAPPING
 619 W CARY STREET, RICHMOND, VA 23220
 804-277-4231 nyfelerassociates.com

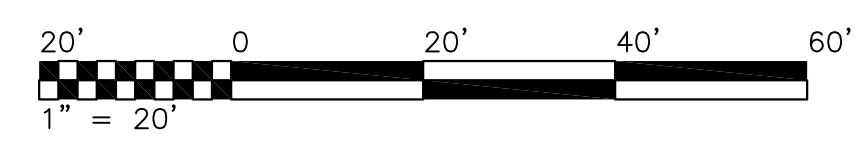
DATE	5/30/2019
JOB NUMBER	19041
SCALE	1"=20'
DRAWN BY	JRW

**TOPOGRAPHIC SURVEY OF
 PARCEL FIVE OF REYNOLDS
 SOUTH PLANT
 301 W 6TH STREET
 CITY OF RICHMOND, VA**

SHEET NO.: 1 OF 1

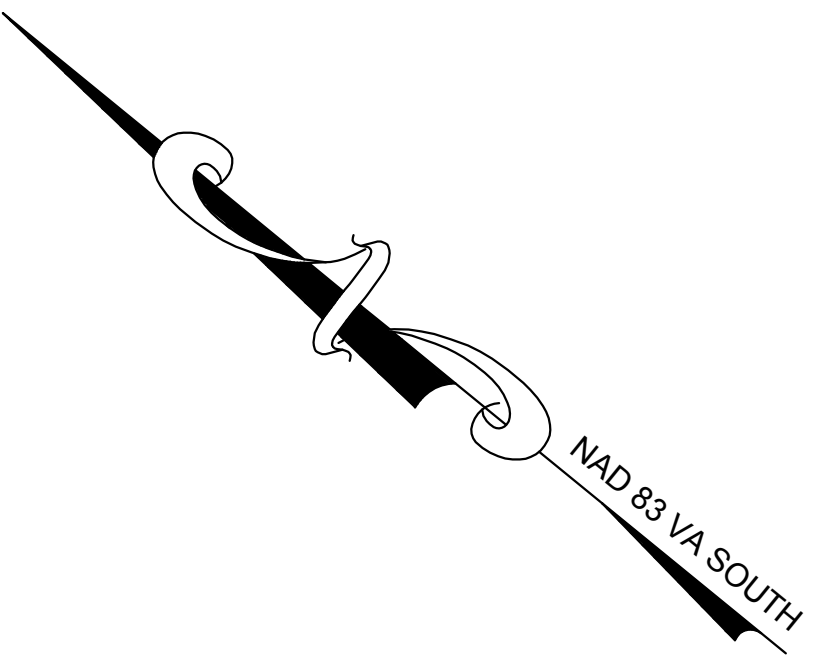


- LEGEND**
- FOUND PROPERTY CORNER
 - - - 2" PE GAS LINE
 - ⊗ GV GAS VALVE
 - - - SS SANITARY SEWER PIPE
 - ⊙ SANITARY SEWER MANHOLE
 - - - S STORM SEWER PIPE
 - ⊙ STORM SEWER MANHOLE
 - - - W WATER LINE
 - ▽ WATER VALVE
 - WM WATER METER
 - ⚡ FIRE HYDRANT
 - ⊙ ELECTRIC MANHOLE
 - * LIGHT/UTILITY POLE
 - - - GUY WIRE
 - - - OVERHEAD UTILITY LINE
 - ⚡ SIGN
 - ☐ MAILBOX
 - ⊙ TREE
 - ▭ LANDSCAPED AREA
 - ▭ CONCRETE
 - ▭ ASPHALT
 - ▭ GRAVEL



**6TH STREET AND LEGEND BREWING COMPANY
 BOUNDARY AND 6TH STREET CLOSURE
 INFORMATION FROM DRAWINGS PROVIDED BY
 CLIENT. NO BOUNDARY WORK OR COURTHOUSE
 RESEARCH WAS PERFORMED FOR CLOSED 6TH
 STREET OR LEGEND BREWING COMPANY PARCEL.**

LEGEND BREWING COMPANY
 321 W. 7TH STREET
 PARCEL ID: S0000015001
 ZONING DISTRICT (B-7)
 ID 2011-20976



THIS TOPOGRAPHIC SURVEY FOR A SITE DESIGN FOR PARCEL FIVE OF REYNOLDS SOUTH PLANT IN THE CITY OF RICHMOND, VA WAS COMPLETED UNDER THE DIRECT SUPERVISION AND RESPONSIBLE CHARGE OF GEORGE L. NYFELER, III FROM AN ACTUAL GROUND SURVEY MADE UNDER MY SUPERVISION; THE IMAGERY AND DATA WAS OBTAINED BETWEEN 5/16/2019 AND 5/22/2019; AND THAT THIS MAP MEETS MINIMUM ACCURACY STANDARDS UNLESS OTHERWISE NOTED.

VERTICAL DATUM: NAVD88
 HORIZONTAL AND VERTICAL DATUM ESTABLISHED WITH RTK SOLUTIONS FOR GPS OBSERVED POINTS.

UTILITIES SHOWN ARE FROM A COMBINATION OF FIELD LOCATED EVIDENCE AND CITY OF RICHMOND PROVIDED MAPPING. ALL UTILITY SIZES AND LOCATIONS SHOULD BE VERIFIED BY CONTRACTOR BEFORE STARTING NEW CONSTRUCTION.