

**TREE CANOPY REQUIREMENTS:**

**REQUIREMENT:**  
 NO LESS THAN 30 SQUARE FEET OF CANOPY FOR EACH PARKING SPACE.  
 179 PARKING SPACES X 30SF = 5,370 SF REQUIRED CANOPY COVERAGE

**PROVIDED:**

|                         |                   |
|-------------------------|-------------------|
| (45) 12" MAGNOLIA       | 250 X 43 = 10,750 |
| (3) 4" SUGAR MAPLE      | 250 X 3 = 750     |
| (12) 3" BLACK GUM       | 175 X 12 = 2,100  |
| (3) 3" BOSQUE ELM       | 250 X 3 = 750     |
| (23) 3" HIGAN CHERRY    | 175 X 23 = 4,025  |
| (24) 8-10" CRAPE MYRTLE | 40 X 24 = 960     |

**TOTAL = 19,335 SF PROVIDED CANOPY COVER**

**LANDSCAPE BUFFER REQUIREMENTS:**

**REQUIREMENT:**  
 BUFFER "A" SHALL HAVE A DEPTH OF NOT LESS THAN THE MINIMUM YARD REQUIREMENT APPLICABLE ALONG EACH STREET FRONTAGE OF THE PROPERTY, BUT IN NO CASE LESS THAN FIVE FEET, AND SHALL INCLUDE AN EVERGREEN VEGETATIVE SCREEN NOT LESS THAN THREE AND ONE-HALF FEET IN HEIGHT AT THE TIME OF INSTALLATION PLACED ALONG THE SETBACK LINE OF THE PARKING AREA. EVERGREEN VEGETATIVE MATERIAL INTENDED TO SATISFY THIS REQUIREMENT SHALL BE PLANTED AT SUCH INTERVALS THAT WILL RESULT IN A CONTINUOUS VISUAL SCREEN WITHIN ONE YEAR OF PLANTING.

**PROVIDED:**  
 EXISTING PRIVET HEDGEROWS ALONG KENSINGTON AVENUE AND N. SHEPARD STREET TO FULFILL LANDSCAPE BUFFER TYPE A REQUIREMENTS.

**LIGHTING SCHEDULE:**

| SYMBOL | QTY | LABEL | DISTRIBUTION TYPE | ARRANGEMENT | MANUF                       | DESCRIPTION                                       | MOUNTING HEIGHT         |
|--------|-----|-------|-------------------|-------------|-----------------------------|---|-------------------------|
| ⊙      | 9   | LA#   | 4 WIDE            | SINGLE      | ARCHITECTURAL AREA LIGHTING | PROV2-36L-615-3K7-4W-DB-STND_MNT-DL-UNV           | 15 FT, 20 FT            |
| ⊙      | 9   | LB#   | 3                 | SINGLE      | ARCHITECTURAL AREA LIGHTING | PROV2-36L-615-3K7-3-DB-STND_MNT-DL-UNV            | 10 FT, 15 FT, 20 FT     |
| ⊙      | 8   | LC#   | 5 WIDE            | SINGLE      | ARCHITECTURAL AREA LIGHTING | PROV2-36L-615-3K7-5-DB-STND_MNT-DL-UNV            | 20 FT                   |
| ⊙      | 4   | LD#   | 2                 | SINGLE      | ARCHITECTURAL AREA LIGHTING | WALL MOUNTED LIGHT FIXTURE - SEE ELECTRICAL PLANS | 10 FT 6 IN., 13 FT 2IN. |

NOTE: CONFIRM FIXTURE AND POLE COLOR OF EXISTING LIGHTS PRIOR TO ORDERING TO MATCH  
 SEE DETAIL #6 ON SHEET L4.10 FOR LIGHT POLE FOOTING

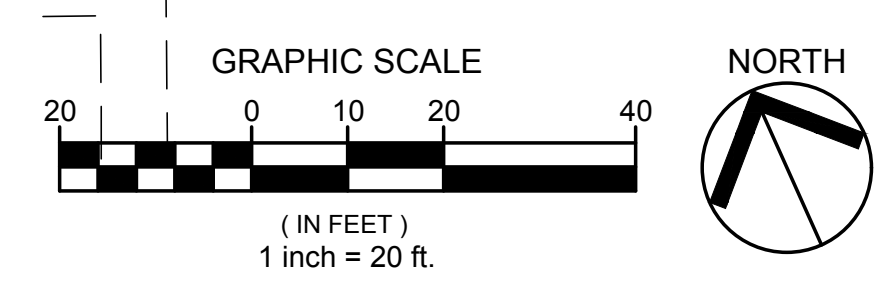
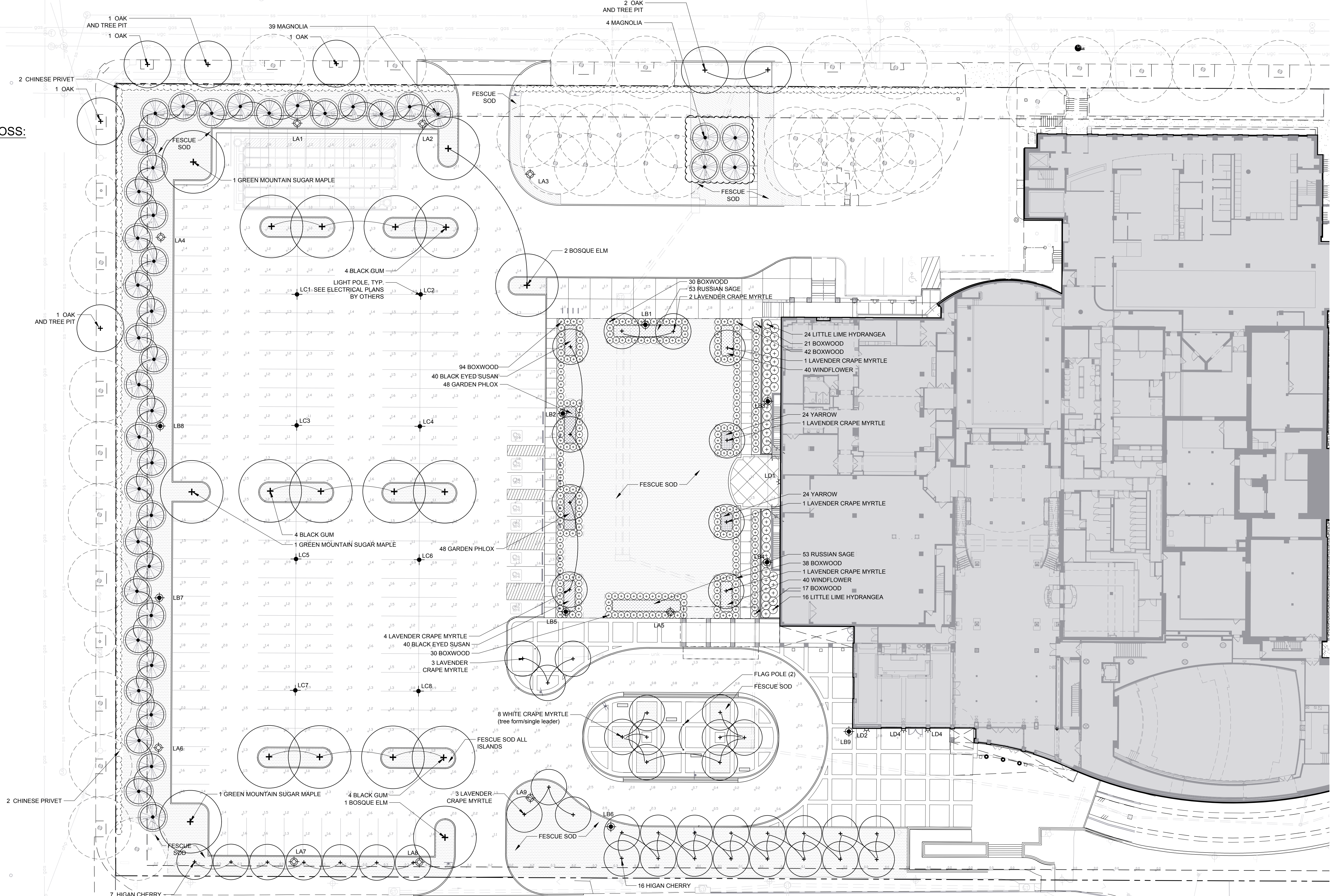
**TREE DIAMETER GAIN & LOSS:**

**REMOVED MAGNOLIA DBH: 1.167"**  
**TOTAL = 1.167" MAGNOLIA DBH REMOVED**

**PROVIDED CALIPER:**

|                   |              |
|-------------------|--------------|
| (45) MAGNOLIA     | 3 X 43 = 120 |
| (3) SUGAR MAPLE   | 4 X 3 = 12   |
| (12) BLACK GUM    | 3 X 12 = 36  |
| (3) BOSQUE ELM    | 3 X 3 = 9    |
| (23) HIGAN CHERRY | 3 X 23 = 69  |
| (24) CRAPE MYRTLE | 3 X 24 = 72  |
| (7) OAK           | 2 X 7 = 14   |

**TOTAL = 341" CALIPER PROVIDED**



2101 East Main Street  
 Richmond, Virginia 23223  
 T 804 649 9303 F 804 343 3378  
 W www.glaveandholmes.com

**PROJECT TITLE**  
 VIRGINIA MUSEUM OF HISTORY & CULTURE - CAPITAL IMPROVEMENTS

VIRGINIA MUSEUM OF HISTORY & CULTURE  
 428 N. ARTHUR ASHE BOULEVARD  
 RICHMOND, VIRGINIA 23220

**CONSULTANTS**  
**STRUCTURAL ENGINEER**  
 LYNCH MYKINS STRUCTURAL ENGINEERS  
 1519 SUMMIT AVE., SUITE 101  
 RICHMOND, VIRGINIA 23230  
 T 804-346-3935 F 804-346-1171

**MEP/FA/SP ENGINEER**  
 ENGINEERS PLUS  
 2900 HUNGARY RD., SUITE 200  
 RICHMOND, VIRGINIA 23228  
 T 804-501-0845 F 804-501-0846

**CIVIL ENGINEER**  
 HG DESIGN STUDIO  
 5701 GROVE AVE.  
 RICHMOND, VA 23226  
 T 804-740-7500 F ...

**LANDSCAPE ARCHITECT**  
 HG DESIGN STUDIO  
 5701 GROVE AVENUE  
 RICHMOND, VA 23226  
 T 804-740-7500 F ...

**LIGHTING CONSULTANT**  
 LAM PARTNERS  
 3171 BABCOCK BOULEVARD, SUITE 200  
 PITTSBURG, PA 15237  
 T 617-354-4502 F ..



**PROJECT NUMBER**  
 M19064

**DATE**  
 July 20, 2020

**DRAWN BY:** CHECKED BY:

**REVISIONS**

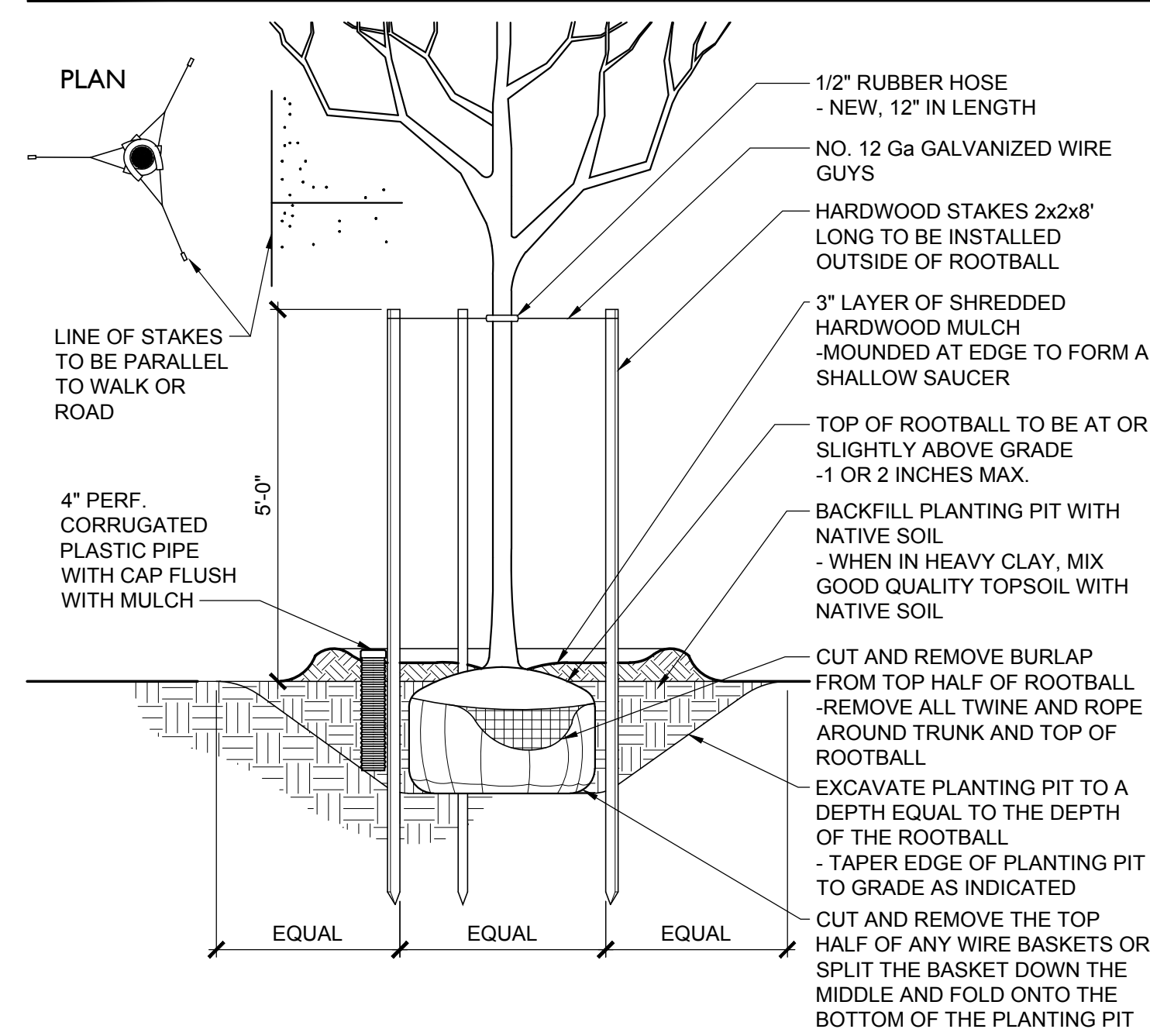
| NO. | DATE      | DESCRIPTION       |
|-----|-----------|-------------------|
| 1   | 8/6/2020  | LANDSCAPE UPGRADE |
| 2   | 8/14/2020 | MAGNOLIA REVISION |

**SHEET TITLE**  
 PLANTING AND LIGHTING PLAN

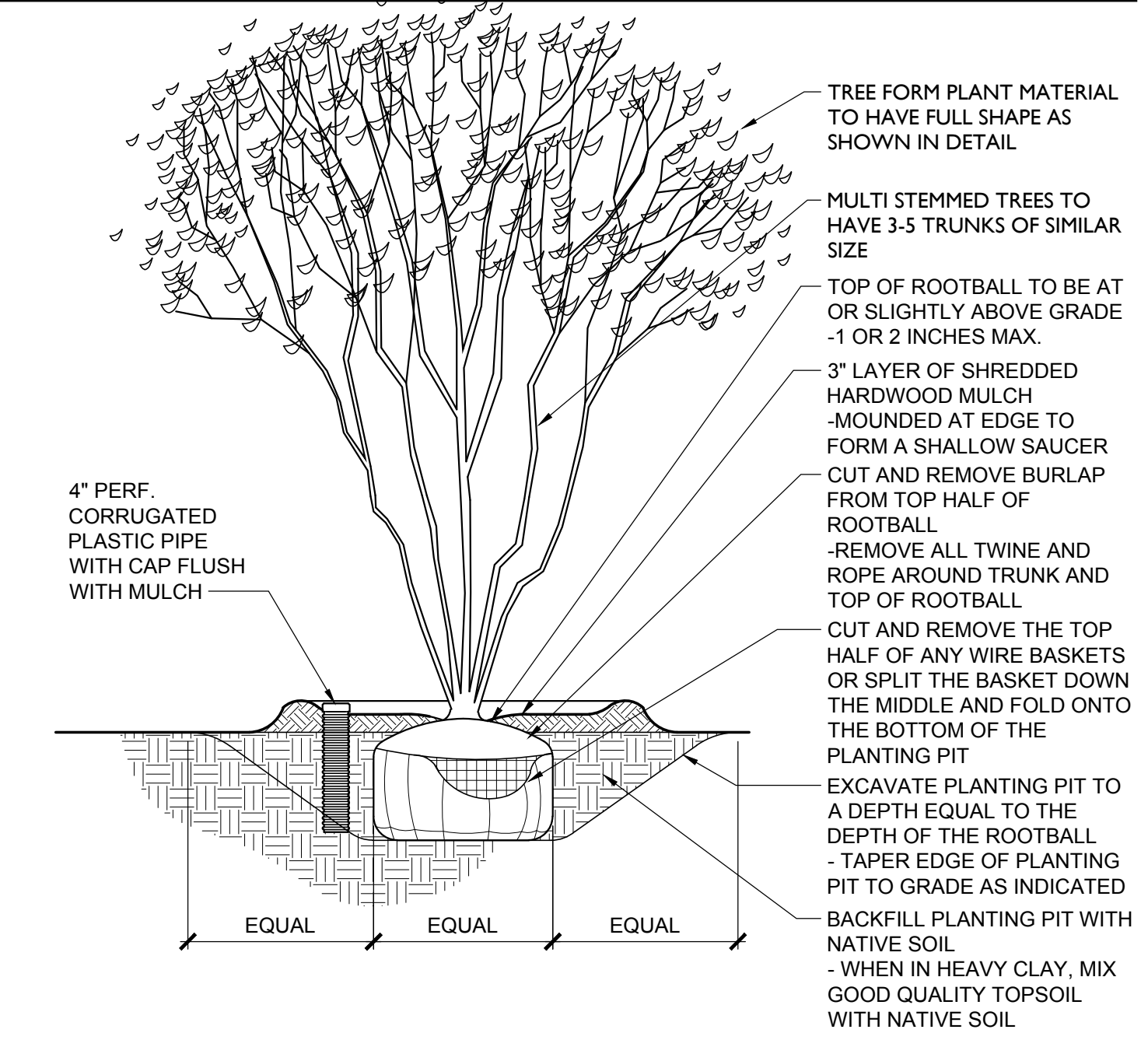
**SHEET NUMBER**  
 L5.10

Copyright 2020, Glave & Holmes Architecture. All rights reserved. These drawings may not be used in any manner not reproduced in any form without prior consent from Glave & Holmes Architecture.

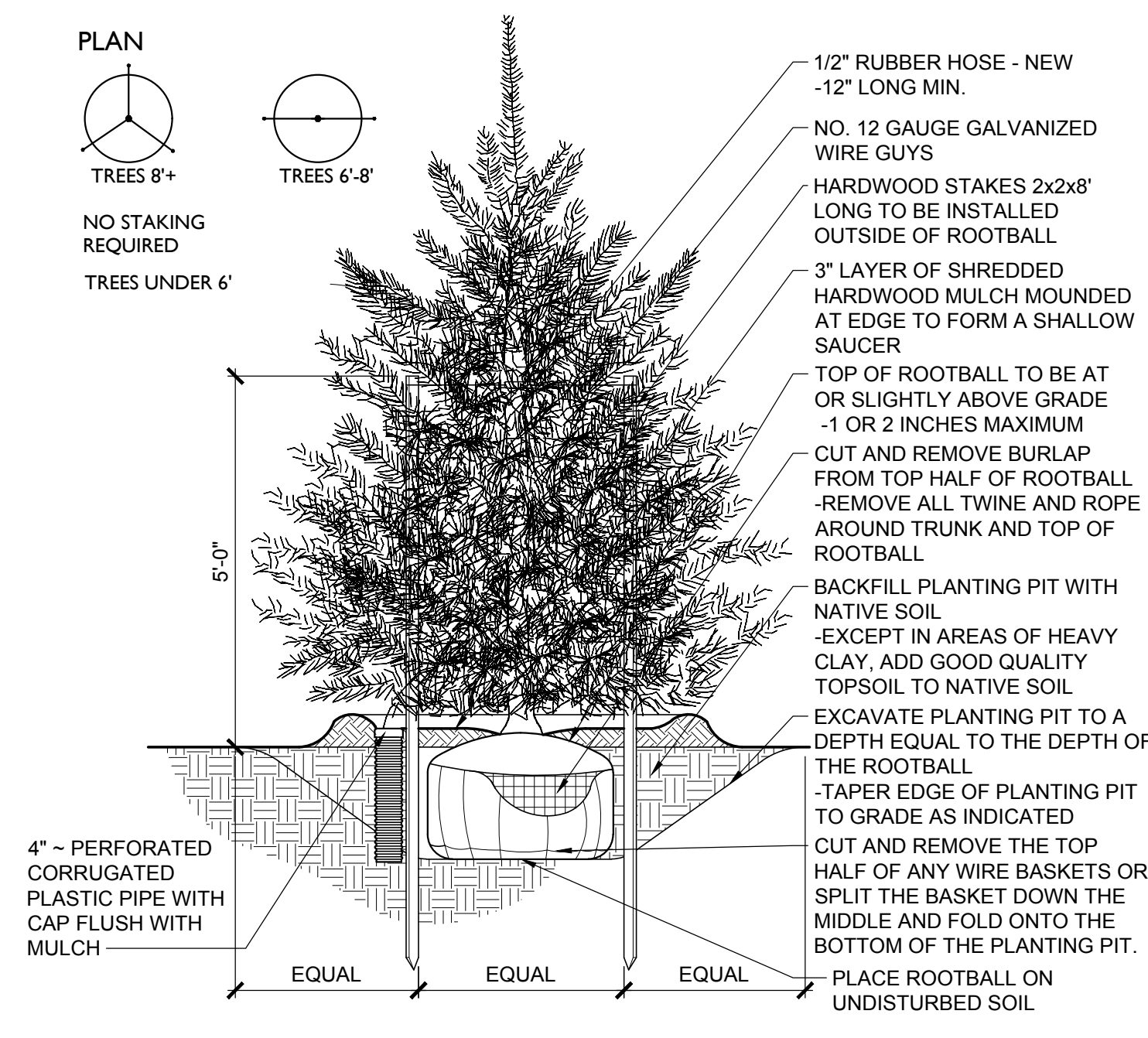
## PLANTING DETAILS



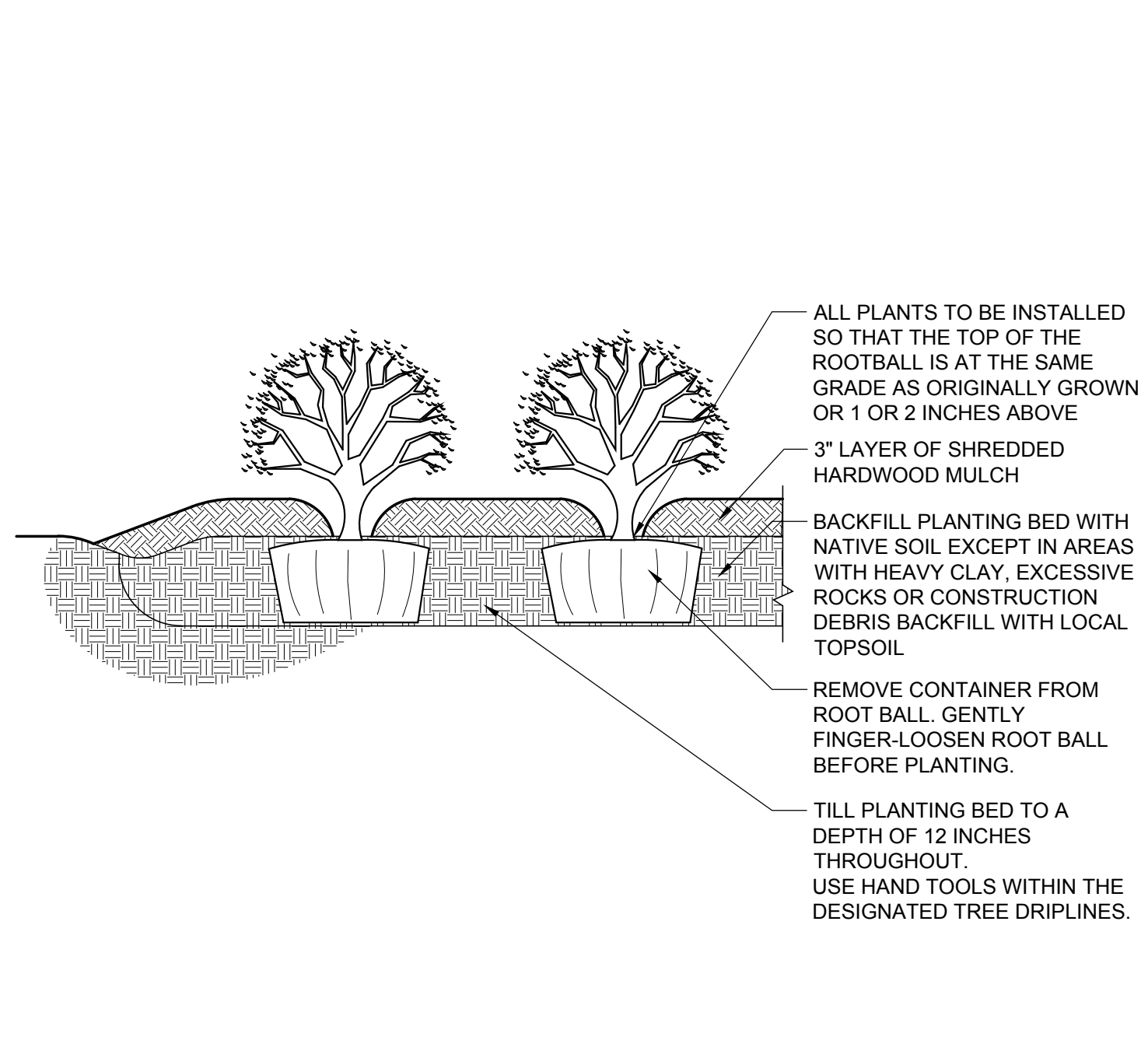
**A** DECIDUOUS TREE STAKING DETAIL  
NOT TO SCALE



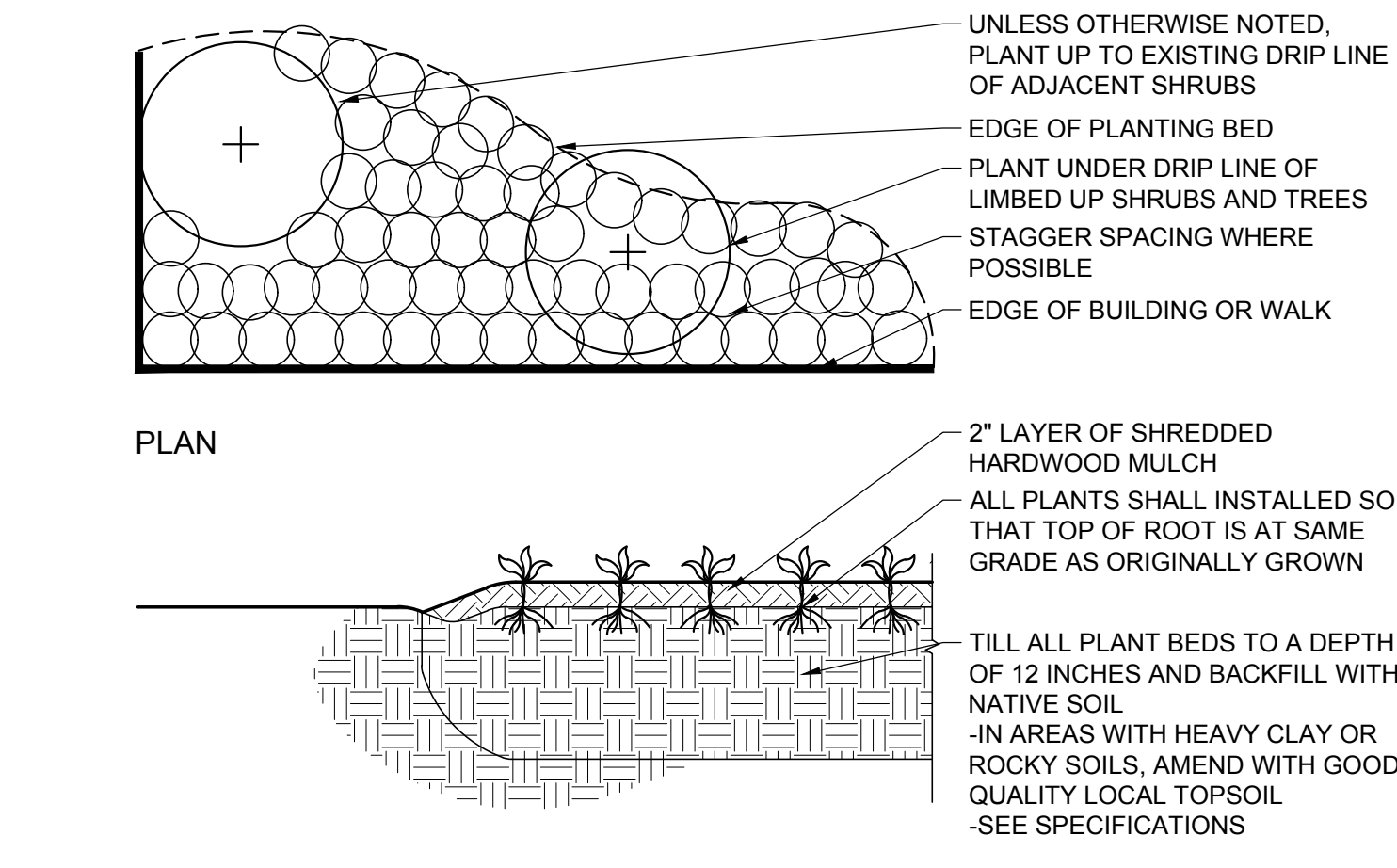
**B** MULTI-STEM TREE PLANTING DETAIL  
NOT TO SCALE



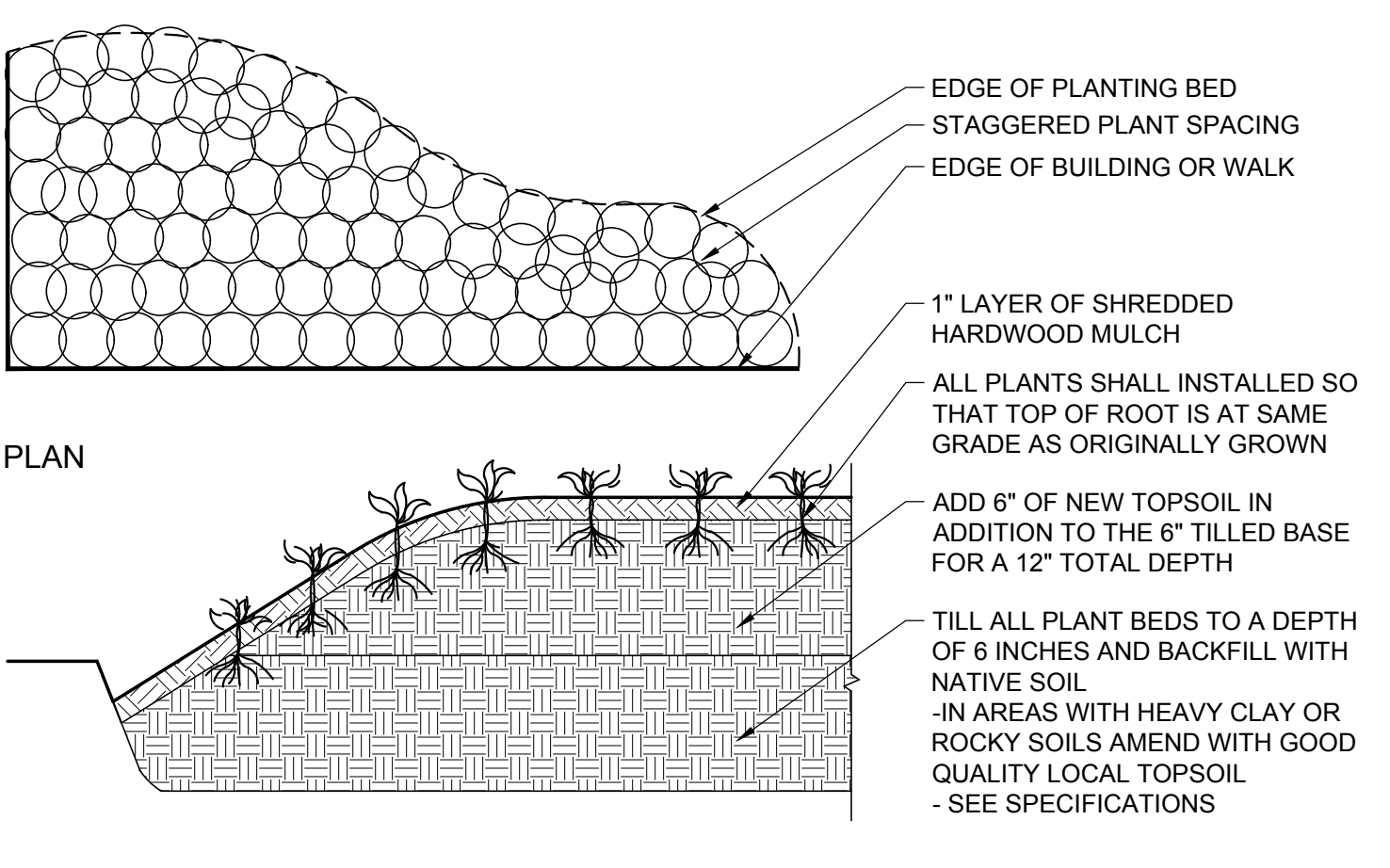
**C** EVERGREEN TREE STAKING DETAIL  
NOT TO SCALE



**D** SHRUB PLANTING DETAIL  
NOT TO SCALE



**E** GROUNDCOVER PLANTING BED DETAIL  
NOT TO SCALE



**F** FLOWER BED PLANTING DETAIL  
NOT TO SCALE

## PLANT MATERIAL SCHEDULE

| QUANTITY                                    | BOTANICAL NAME                            | COMMON NAME           | SPACING  | CALIPER | HEIGHT | ROOT TYPE | DETAIL | REMARKS                       |
|---|---|-----------------------|----------|---------|--------|-----------|--------|-------------------------------|
| <b>TREES</b>                                |   |                       |          |         |        |           |        |                               |
| 1   | MAGNOLIA GRANDIFLORA                      | MAGNOLIA              | AS SHOWN |         | 12-13' | B&B       | C      | LIMB-UP 4 MIN. FROM ROOT BALL |
| 3   | ACER SACCHARUM 'GREEN MOUNTAIN'           | SUGAR MAPLE           | AS SHOWN | 4"      |        | B&B       | A      |                               |
| 12  | NYSSA SYLVATICA                           | BLACK GUM             | AS SHOWN | 3"      |        | B&B       | A      |                               |
| 3   | ULMUS PARVIFOLIA 'BOSQUE'                 | BOSQUE ELM            | AS SHOWN | 3"      |        | B&B       | A      |                               |
| 23  | PRUNUS SUBHIRTCELLA                       | HIGAN CHERRY          | AS SHOWN | 3"      |        | B&B       | A      |                               |
| 16  | LAGERSTROEMIA 'EARLY BIRD LAVENDER'       | LAVENDER CRAPE MYRTLE | AS SHOWN |         | 10-12' | B&B       | B      | SUBSTITUTE FOR LAVENDER VAR.  |
| 8   | LAGERSTROEMIA INDICA X FAURIEI 'NATCHEZ'  | WHITE CRAPE MYRTLE    | AS SHOWN |         | 10-12' | B&B       | B      | SINGLE LEADER SPECIMEN ONLY   |
| 7   | QUERCUS SP.                               | OAK                   | AS SHOWN | 2"      |        | B&B       | A      |                               |
| <b>SHRUBS</b>                               |   |                       |          |         |        |           |        |                               |
| 272   | BUXUS x 'WINTERGREEN'                     | BOXWOOD               | AS SHOWN |         | 24"    | 3 GAL.    | D      |                               |
| 42  | HYDRANGEA PANICULATA 'LITTLE LIME'        | LITTLE LIME HYDRANGEA | AS SHOWN |         | 36"    | 3 GAL.    | D      |                               |
| 4   | LIGUSTRUM SINENSE                         | CHINESE PRIVET        | AS SHOWN |         | 24"    | 3 GAL.    | D      |                               |
| <b>ORNAMENTAL GRASSES, &amp; PERENNIALS</b> |   |                       |          |         |        |           |        |                               |
| 80  | RUDBECKIA FULGIDA 'GOLDSTURM'             | BLACK EYED SUSAN      | 18" O.C. |         |        | 1 GAL.    | E      |                               |
| 106   | PEROVSKIA ATRIPLICIFOLIA 'BLUE SPIRE'     | RUSSIAN SAGE          | 24" O.C. |         |        | 1 GAL.    | E      |                               |
| 96  | PHLOX PANICULATA 'DAVID'                  | GARDEN PHLOX          | 18" O.C. |         |        | 1 GAL.    | E      |                               |
| 80  | ANEMONE X HYDRIDA QUEEN CHARLOTTLE        | WINDFLOWER            | 18" O.C. |         |        | 1 GAL.    | E      |                               |
| 48  | ACHILLEA MILLEFOL. 'STRAWBERRY SEDUCTION' | YARROW                | 18" O.C. |         |        | 1 GAL.    | E      |                               |

## PLANTING NOTES:

- CONTRACTOR SHALL VERIFY PLANT MATERIAL QUANTITIES SHOWN ON PLAN WITH TOTALS IN PLANTING SCHEDULE. NOTIFY LANDSCAPE ARCHITECT OF ANY DISCREPANCIES PRIOR TO FINAL BIDDING. UNIT PRICES SHALL BE SUBMITTED AS PART OF FINAL BID.
- ALL PLANT MATERIALS SHALL BE GUARANTEED FOR ONE FULL YEAR TO BE IN A HEALTHY GROWING CONDITION. PLANT MATERIALS WHICH DO NOT FULFILL THIS GUARANTEE SHALL BE REPLACED AT NO COST TO THE OWNER. REPLACEMENT SHALL BE GUARANTEED THROUGHOUT THE ORIGINAL GUARANTEE PERIOD. PLANTS THAT DIE SHALL BE REPLACED IMMEDIATELY.
- CONTRACTOR IS RESPONSIBLE FOR WATERING ALL PLANT MATERIAL DURING INSTALLATION AND UNTIL FINAL INSPECTION AND ACCEPTANCE BY OWNER. CONTRACTOR SHALL NOT ASSUME IRRIGATION SYSTEM IS FULLY OPERATIONAL AT COMPLETION OF PLANTING INSTALLATION.
- CONTRACTOR RESPONSIBLE FOR CONTACTING MISS UTILITY PRIOR TO BEGINNING OF CONSTRUCTION FOR LOCATION OF ALL UTILITY LINES. TREES SHALL BE LOCATED A MINIMUM OF 5 FEET FROM SEWER/WATER CONNECTIONS. NOTIFY LANDSCAPE ARCHITECT IF ANY CONFLICTS OCCUR.
- THE LANDSCAPE ARCHITECT IS THE OWNERS REPRESENTATIVE AND SHALL BE THE APPROVING AUTHORITY FOR INFORMATION PROVIDED IN THESE PLANS AND SPECIFICATIONS.
- ALL PLANT MATERIALS, TOPSOIL, MULCH, FERTILIZERS, SOIL AMENITIES, PLANTING SUPPLIES AND METHODS SHALL BE SUBJECT TO LANDSCAPE ARCHITECTS APPROVAL. REJECTED MATERIALS SHALL BE REMOVED FROM THE SITE WITHOUT DELAY.
- ALL PLANT MATERIALS AND PLANTING METHODS SHALL CONFORM TO A.A.N. STANDARDS.
- CONTRACTOR SHALL LAYOUT AND MARK LOCATION FOR ALL PLANT MATERIAL, PLANTING, AND IMPROVEMENTS SHOWN AND REQUEST IN FIELD APPROVAL FROM LANDSCAPE ARCHITECT.
- BEDS TO CONTAIN SHRUBS OR GROUND COVER SHALL BE TILLED TO A DEPTH OF 6" AND THE SOIL CONDITIONED BY ADDING CLEAN, WELL ROTTED MANURE. IF EXISTING SOIL IS CONSIDERED TO BE UNUSABLE BY OWNER, BEDS SHALL BE TREATED TO ELIMINATE WEEDS AND WEED SEEDS.
- ALL PLANTING BED AREAS SHALL BE COVERED WITH A 3" MINIMUM LAYER OF MEDIUM TEXTURE SHREDDED HARDWOOD MULCH UNLESS OTHERWISE NOTED.
- ALL SUBSTITUTIONS OF PLANT MATERIAL SHALL BE REQUESTED IN WRITING TO THE LANDSCAPE ARCHITECT AND APPROVED IN WRITING BY THE OWNER.
- ALL PLANTING OPERATIONS SHALL BE UNDER THE SUPERVISION OF AN EXPERIENCED PLANTSMAN.
- LANDSCAPE ARCHITECT RESERVES THE RIGHT TO SELECT PLANT MATERIALS IN THE NURSERY.
- FOR TREES BALLED IN WIRE BASKETS, CUT AND REMOVE TOP AND SIDES OF BASKET AFTER INSTALLATION.
- LANDSCAPE ARCHITECT RESERVES THE RIGHT TO REJECT ANY PLANTS AND MATERIALS THAT ARE IN AN UNHEALTHY OR UNSIGHTLY CONDITION, AS WELL AS PLANTS AND MATERIALS THAT DO NOT CONFORM TO A.A.N. STANDARDS. SEE AMERICAN STANDARD FOR NURSERY STOCK, ANSI Z60.1 (CURRENT EDITION).
- SOIL SHALL BE FREE OF ALL WEEDS.
- PLANT SIZES, QUANTITIES, AND SPECIES WILL BE CHECKED BY CITY INSPECTION FOR COMPLIANCE WITH PLANT SCHEDULE AS APPROVED BY THE CITY. CONTRACTOR SHALL BE HELD RESPONSIBLE FOR DELAY IN ISSUANCE OF CERTIFICATE OF OCCUPANCY BY THE CITY RESULTING FROM UNAUTHORIZED SUBSTITUTIONS OR DOWNSIZING.
- UPON COMPLETION OF LANDSCAPE INSTALLATION, THE LANDSCAPE CONTRACTOR SHALL NOTIFY THE GENERAL CONTRACTOR WHO WILL VERIFY COMPLETENESS, INCLUDING THE REPLACEMENT OF ALL DEAD PLANT MATERIAL, AND SCHEDULE A FINAL INSPECTION FOR ACCEPTANCE BY OWNER.
- THE ONE YEAR GUARANTEE PERIOD SHALL BEGIN UPON THE OWNER'S APPROVAL AND ACCEPTANCE OF THE PLANTING INSTALLATION. THE OWNER SHALL ASSUME RESPONSIBILITY FOR MAINTENANCE INCLUDING WATERING, WEEDING, PEST CONTROL, AND FERTILIZATION.
- CONTRACTOR SHALL REMOVE STAKING FROM TREES AT THE END OF THE ONE YEAR WARRANTY PERIOD.



2101 East Main Street  
Richmond, Virginia 23223  
T 804 649 9303 F 804 343 3378  
W www.glaveandholmes.com

PROJECT TITLE  
VIRGINIA MUSEUM OF HISTORY & CULTURE - CAPITAL IMPROVEMENTS

VIRGINIA MUSEUM OF HISTORY & CULTURE  
428 N. ARTHUR ASHE BOULEVARD  
RICHMOND, VIRGINIA 23220

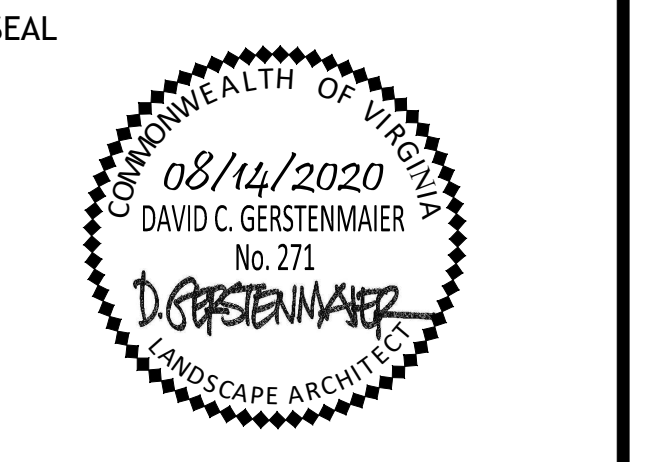
CONSULTANTS  
STRUCTURAL ENGINEER  
LYNCH MYKINS STRUCTURAL ENGINEERS  
1519 SUMMIT AVE., SUITE 101  
RICHMOND, VIRGINIA 23230  
T 804-346-3935 F 804-346-1171

MEP/FA/SP ENGINEER  
ENGINEERS PLUS  
2900 HUNGARY RD., SUITE 200  
RICHMOND, VIRGINIA 23228  
T 804-501-0845 F 804-501-0846

CIVIL ENGINEERING  
HG DESIGN STUDIO  
5701 GROVE AVE.  
RICHMOND, VA 23226  
T 804-740-7500 F ...

LANDSCAPE ARCHITECT  
HG DESIGN STUDIO  
5701 GROVE AVENUE  
RICHMOND, VA 23226  
T 804-740-7500 F ...

LIGHTING CONSULTANT  
LAM PARTNERS  
3171 BARCOCK BOULEVARD, SUITE 200  
PITTSBURG, PA 15237  
T 617-354-4502 F ..



PROJECT NUMBER  
M19064

DATE  
July 20, 2020

DRAWN BY: CHECKED BY:

| REVISIONS |           |                   |
|-----------|-----------|-------------------|
| NO.       | DATE      | DESCRIPTION       |
| 1         | 8/6/2020  | LANDSCAPE UPGRADE |
| 2         | 8/14/2020 | MAGNOLIA REVISION |

SHEET TITLE  
PLANTING SCHEDULE

SHEET NUMBER  
L5.20



Copyright 2020, Glavé & Holmes Architecture. All rights reserved. These drawings may not be used in any manner not reproduced in any form without prior consent from Glavé & Holmes Architecture.

