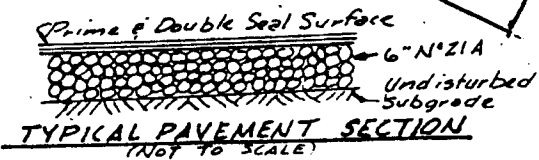
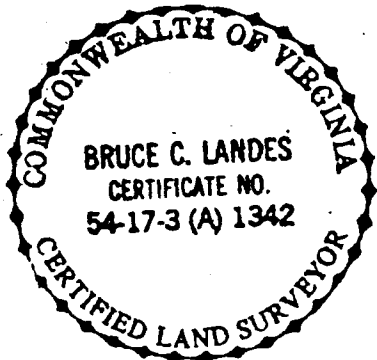
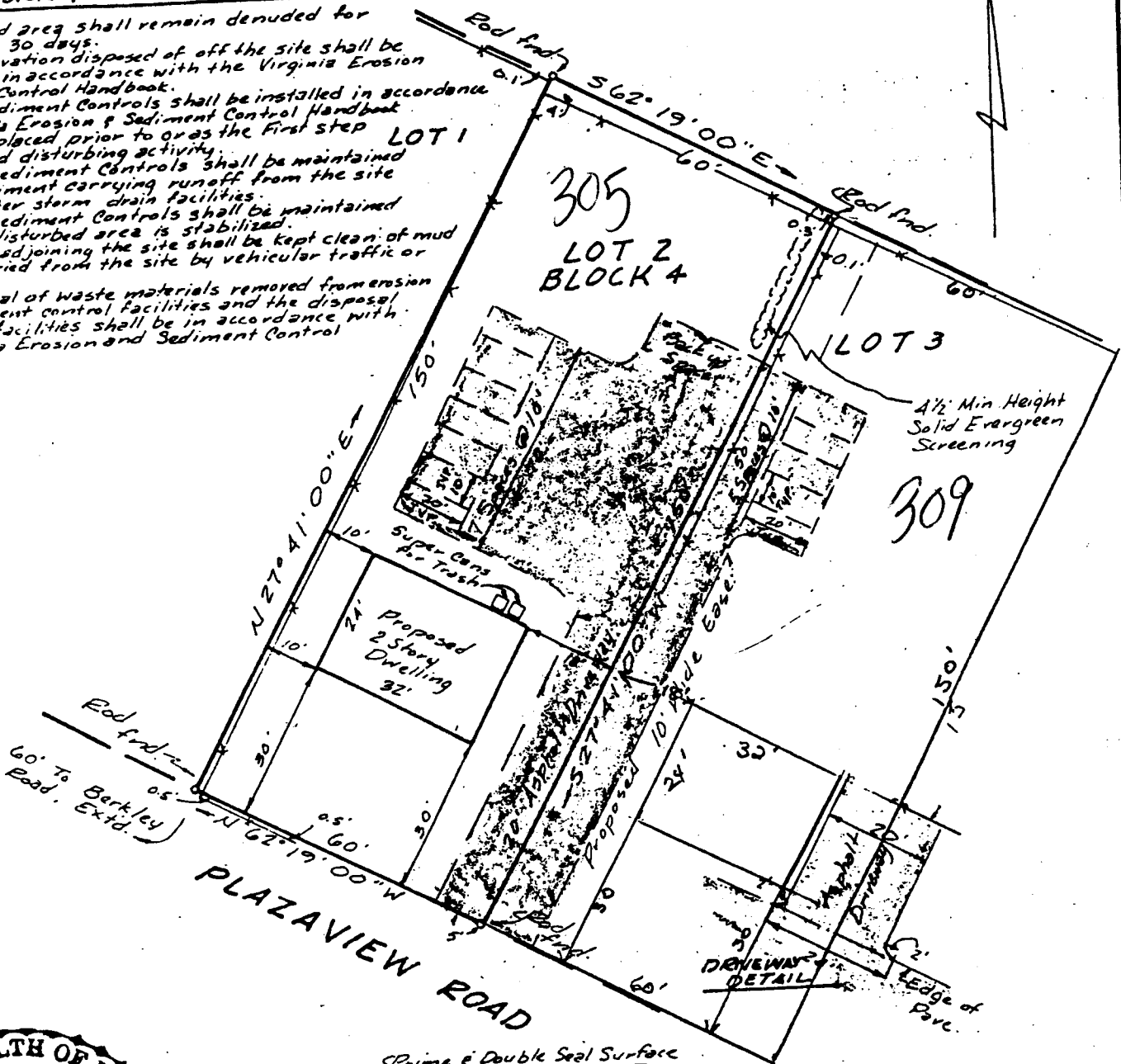


Note: The subject property is not within the limits of the 100 Year Flood Boundary as established by the Federal Insurance Administration.

EROSION & SILTATION NOTES

1. No disturbed area shall remain denuded for more than 30 days.
2. Excess excavation disposed of off the site shall be disposed of in accordance with the Virginia Erosion & Sediment Control Handbook.
3. Erosion & Sediment Controls shall be installed in accordance with Virginia Erosion & Sediment Control Handbook & shall be placed prior to or as the first step of the land disturbing activity.
4. Erosion & Sediment Controls shall be maintained so that sediment carrying runoff from the site will not enter storm drain facilities.
5. Erosion & Sediment Controls shall be maintained until the disturbed area is stabilized.
6. Properties adjoining the site shall be kept clean of mud or silt carried from the site by vehicular traffic or runoff.
7. The disposal of waste materials removed from erosion and sediment control facilities and the disposal of these facilities shall be in accordance with the Virginia Erosion and Sediment Control Handbook.



SURVEY FOR
VIRGINIA FAMILY HOMES
 Showing physical improvements to Lot 2, Block 4, Section 1-B, Green Acres Subdivision, Richmond, Virginia.

Bruce C. Landes
 Bruce C. Landes C. L. S.

PLOTTED RMS CALC. _____
 CHECKED FRR N.B. _____

LANDMARK SURVEYORS, INC.
 Engineers, Surveyors, Planners
 P.O. Box 62 Midlothian, Virginia 23113

SCALE 1"=30' JOB# 1444
 DATE 10-13-86 DN 1444-1
 REV 10-16-86 REV 11-17-86