

2024 CHA Survey Overview

Jasmine Carmichael, CHA/CHIP Coordinator



CHA Survey Overview

- The purpose of the survey was to provide residents an opportunity to express their feelings about the community
- Asked a range of questions to help better understand what is needed in the community
- **1,263 total responses**
 - 1,126 for Richmond & Henrico
 - 465 Henrico, 661 Richmond



Access to Care Questions

Was there a time in the past 12 months that you could not get the healthcare you needed?

Counts/frequency: Yes (381, 30.7%), I did not need care (165, 13.3%), No - I was able to access my care provider when I needed to (697, 56.1%)



Within the past year, where did you go most often for primary care?

- 1.) **Private Doctor's office** (537, 50.2%)
- 2.) **Hospital/ER** (164, 15.3%)
- 3.) **Urgent Care Center** (137, 12.8%)
- 4.) **Community Clinics** (81, 7.6%)
- 5.) **RHHD** (73, 6.9%)

Access to Care Questions (Cont'd)

- **What were the reasons (if this applies) you / your family could not get the care you needed during the past 12 months?**

Top Five Most Frequently Selected Reasons:

- 1.) No appointments available or long waits for appointments (152, 41.6%)
- 2.) Cost (140, 38.4%)
- 3.) Have no insurance (126, 34.5%)
- 4.) Service not covered by insurance (79, 21.6%)
- 5.) Did not know where to go or how to find a doctor (55, 15.1%)

Experiences in the Community

1.) Have you or your family ever been impacted by violence in your community?

- Yes (345, 27.8%)
- No (894, 72.2%)

2.) What type(s) of violence have impacted you and your family in your community?

- 1.) Firearm-related violence (219, 64.2%)
- 2.) Domestic/intimate partner violence (109, 32.0%)
- 3.) Mental/emotional/verbal violence (93, 27.3%)
- 4.) Interpersonal violence (outside of the home) (66, 19.5%)
- 5.) Sexual violence (57, 16.7%)

Other answers expressed by respondents: car break-ins, attempted burglaries, political demonstrations, unsafe neighborhoods, police brutality, & violence in schools.

3.) Have you or your family experienced racism in a way that impacted your health?

- Yes (194, 15.7%)
- No (1040, 84.3%)

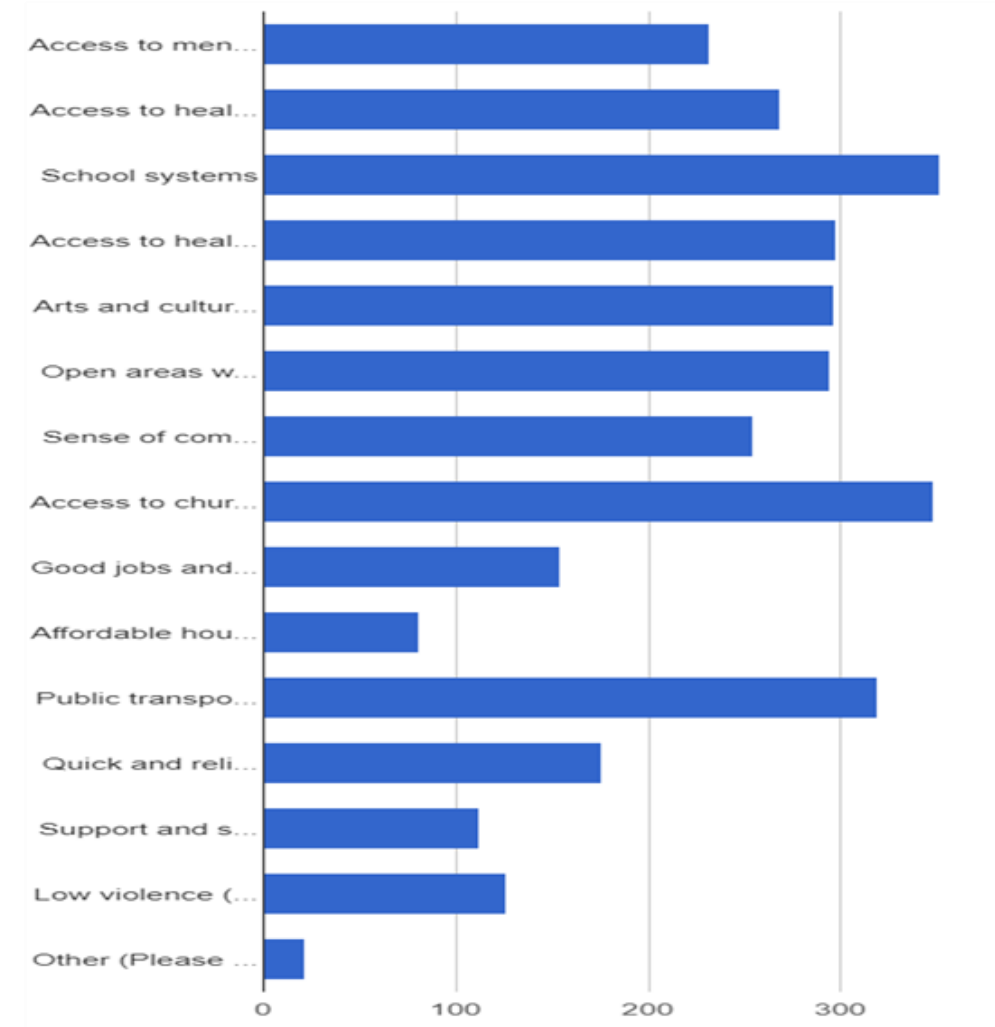
4.) Have you or your family experienced sexism or gender-based discrimination in a way that impacted your health?

- Yes (162, 13.2%)
- No (1067, 86.8%)

What is Going Well?

5 Most Frequently Selected Answer Choices

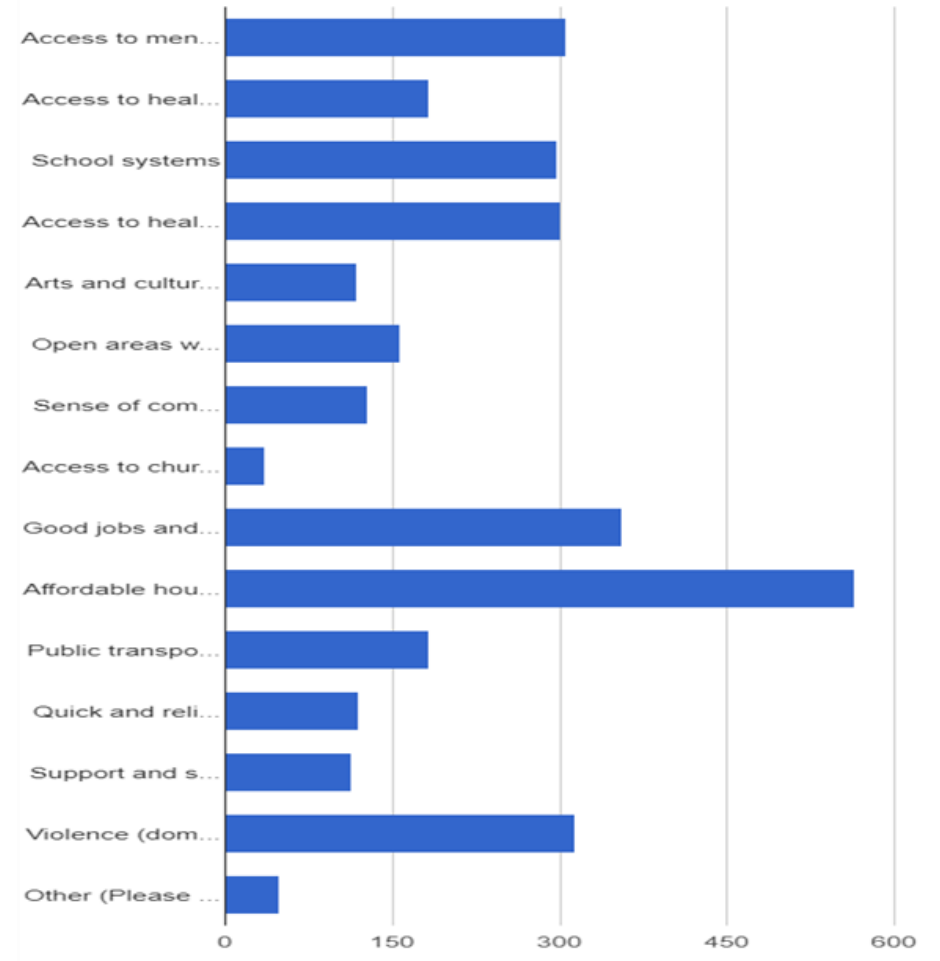
1. School systems (358, 29.3%)
2. Access to churches or other places of worship (349, 28.6%)
3. Public transportation (322, 26.4%)
4. Access to healthy, affordable foods (299, 24.5%)
5. Arts and cultural events & Open areas where it is safe to engage in recreational activities (296, 24.2%)



What is Not Going Well?

5 Most Frequently Selected Answer Choices

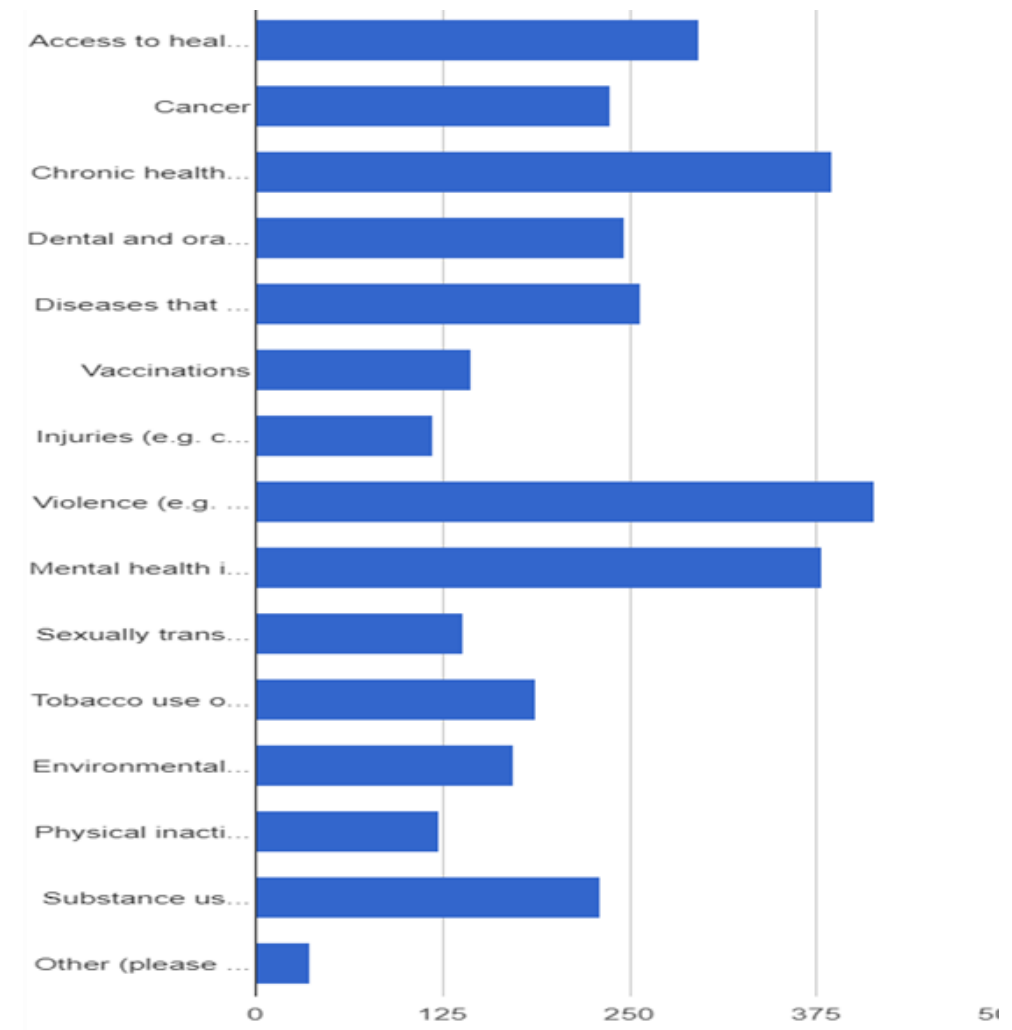
1. Affordable housing and utilities (569, 47.4%)
2. Good jobs and stable economy (360, 30.0%)
3. Violence (domestic, elder, youth, firearm-related, etc.) (315, 26.2%)
4. Access to mental health services (308, 25.6%)
5. Access to healthy, affordable foods (300, 25.0%)



Most Concerning Health-Related Issues

5 Most Frequently Selected Answer Choices

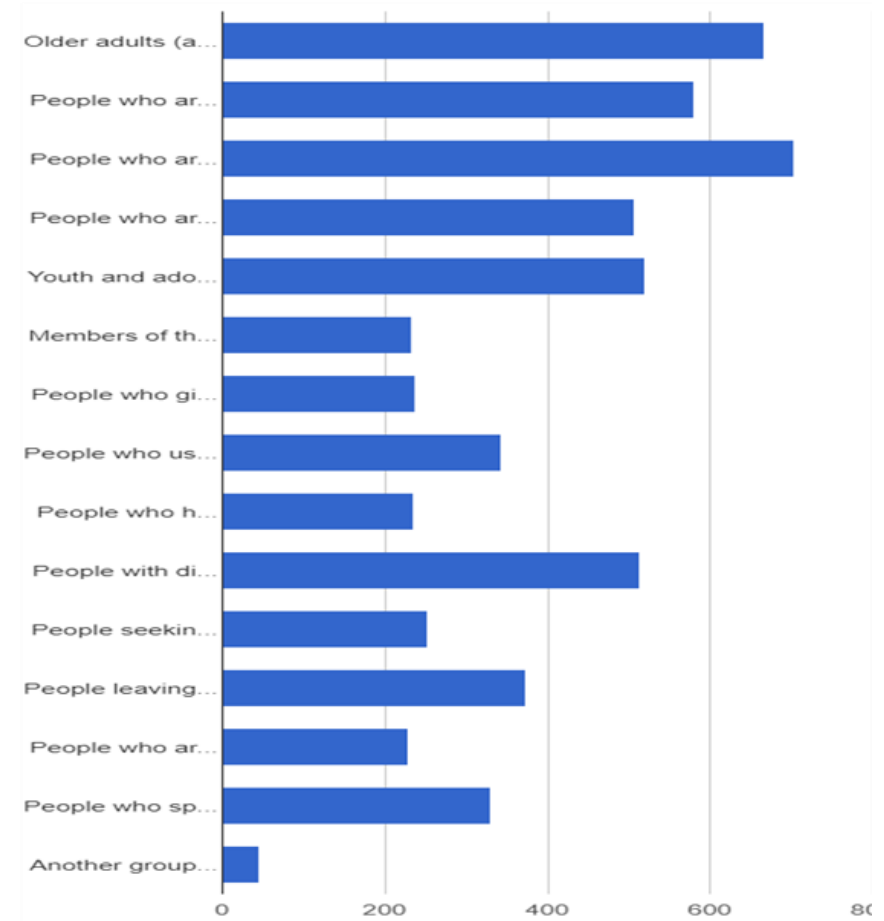
1. Violence (418, 34.8%)
2. Chronic Diseases (389, 32.4%)
3. Mental health issues (384, 31.9%)
4. Access to health care services and providers (298, 24.8%)
5. Diseases that spread (259, 21.5%)



Which Groups Might Need More Support in Our Communities?

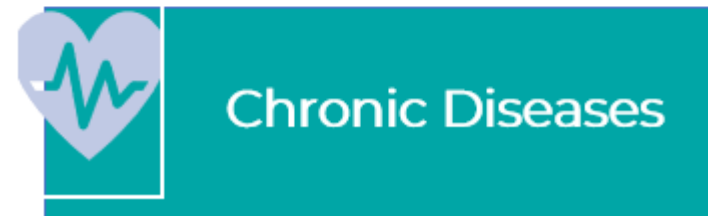
5 Most Frequently Selected Answer Choices

1. People who are homeless (709, 58.4%)
2. Older adults (aged 60+), (669, 55.1%)
3. People who are unemployed (585, 48.1%)
4. Youth and adolescents (522, 43.0%)
5. People who are experiencing poverty (508, 41.8%),



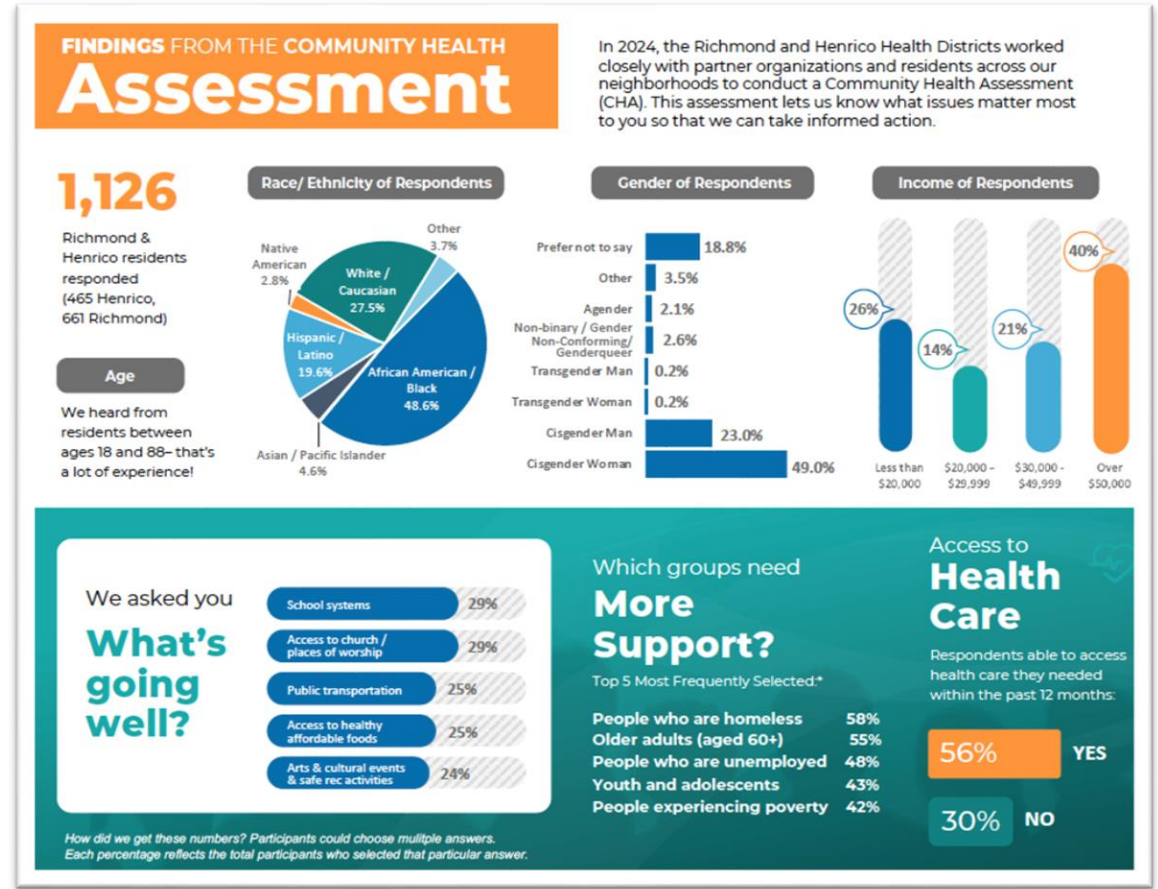
How Will We Use the Results?

- The community health assessment (CHA) survey results are used to inform community health improving planning (CHIP).
- Based upon the results the following issues were selected as priorities:



Want to See More or Share with the Community?

- Find highlights of the CHA results here:
<https://www.vdh.virginia.gov/richmond-city/cha/>



Want To Be Involved?

Join A CHIP Committee!

How to **Get involved**

We're looking for community members to participate in the CHIP steering committees for the three priority areas. If you spend a lot of time thinking about or working on one of these issues, we need your ideas!

To sign up, scan QR code
or call 804-774-9776!

