

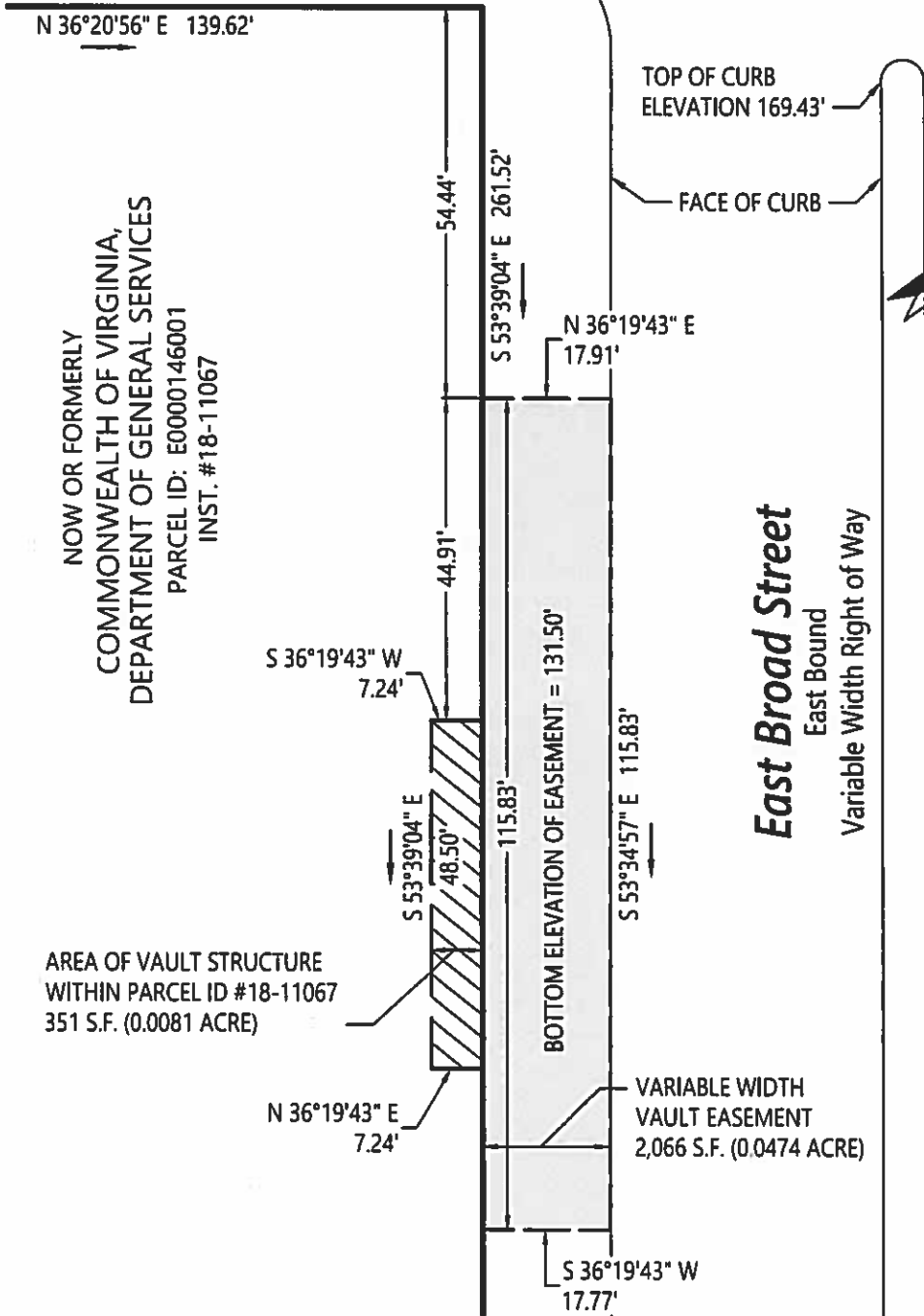
# EXHIBIT A (VAULT EASEMENT)

\\vhb\gbl\proj\Richmond\34157.00 General Assembly Bldg\cad\ld\Planmisc\Easements\20 0908 LD Revised Easements\34157vault.dwg

## North 9th Street

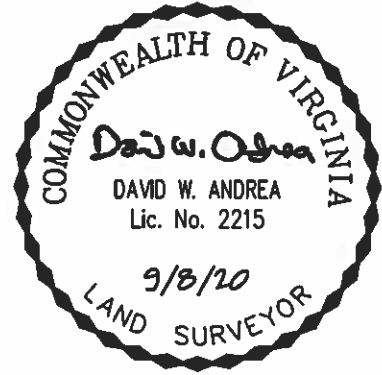
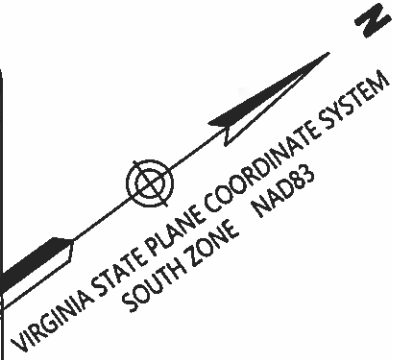
North Bound

Variable Width Right of Way



### General Notes:

1. HORIZONTAL DATUM BASED ON "VACATION OF LOT LINES AND CONSOLIDATION OF MULTIPLE PARCELS" PLAT BY AUSTIN BROCKENBROUGH AND DATED MAY 17, 2018.
2. VERTICAL DATUM BASED ON NAVD88.



Transportation, Land Development and Environmental Services  
Two Columbus Center, 4500 Main Street  
Suite 400, Virginia Beach, Virginia 23462  
Phone 757/490-0132 | Fax 757/490-0136

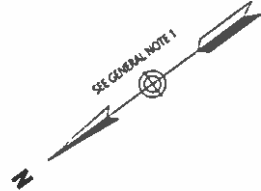
Exhibit Showing  
Variable Width Vault Easement For  
**Virginia General Assembly Building**  
City of Richmond, Virginia

Date	9/8/20
Scale	1" = 25'
VHBCad File Name	34157vault
Project Number	34157.00

# EXHIBIT B (SIDEWALK EASEMENT PLATS)



**Yanase Hargen Brustlin, Inc.**  
 Transportation  
 Land Development  
 Environmental Services  
 Two Columbus Center  
 4500 Major Street, Suite 400  
 Virginia Beach, Virginia 23462  
 757.490.0112 • FAX 757.490.0136



Curve	Stationing	Delta	Chord	Chord Bearing
1	0+00	111.07'	111.07'	S85°27'13"W
2	1+07	1.07'	1.07'	S85°27'32"W
3	1+08	0.08'	0.08'	N85°57'15"W

**Exhibit Showing  
 Variable Width  
 Sidewalk Easements for  
 Virginia General  
 Assembly Building  
 City of Richmond, Virginia**  
 Scale: 1" = 40'  
 February 6, 2019

Sheet 1 of 3  
 Drawing Number  
**Sd-1**  
 COMMONWEALTH OF VIRGINIA  
 DATE: 8/12/24  
 BY: 160 272  
 9/18/20  
 34157.00

LINE TABLE	BEARING	DISTANCE
L1	S85°27'13"W	11.10'
L2	S85°27'32"W	1.07'
L4	N85°57'15"W	0.08'

NOW OR FORMERLY  
 COMMONWEALTH OF VIRGINIA  
 DEPARTMENT OF GENERAL SERVICES  
 PARCEL ID: E0001462001  
 INST: #18-11067

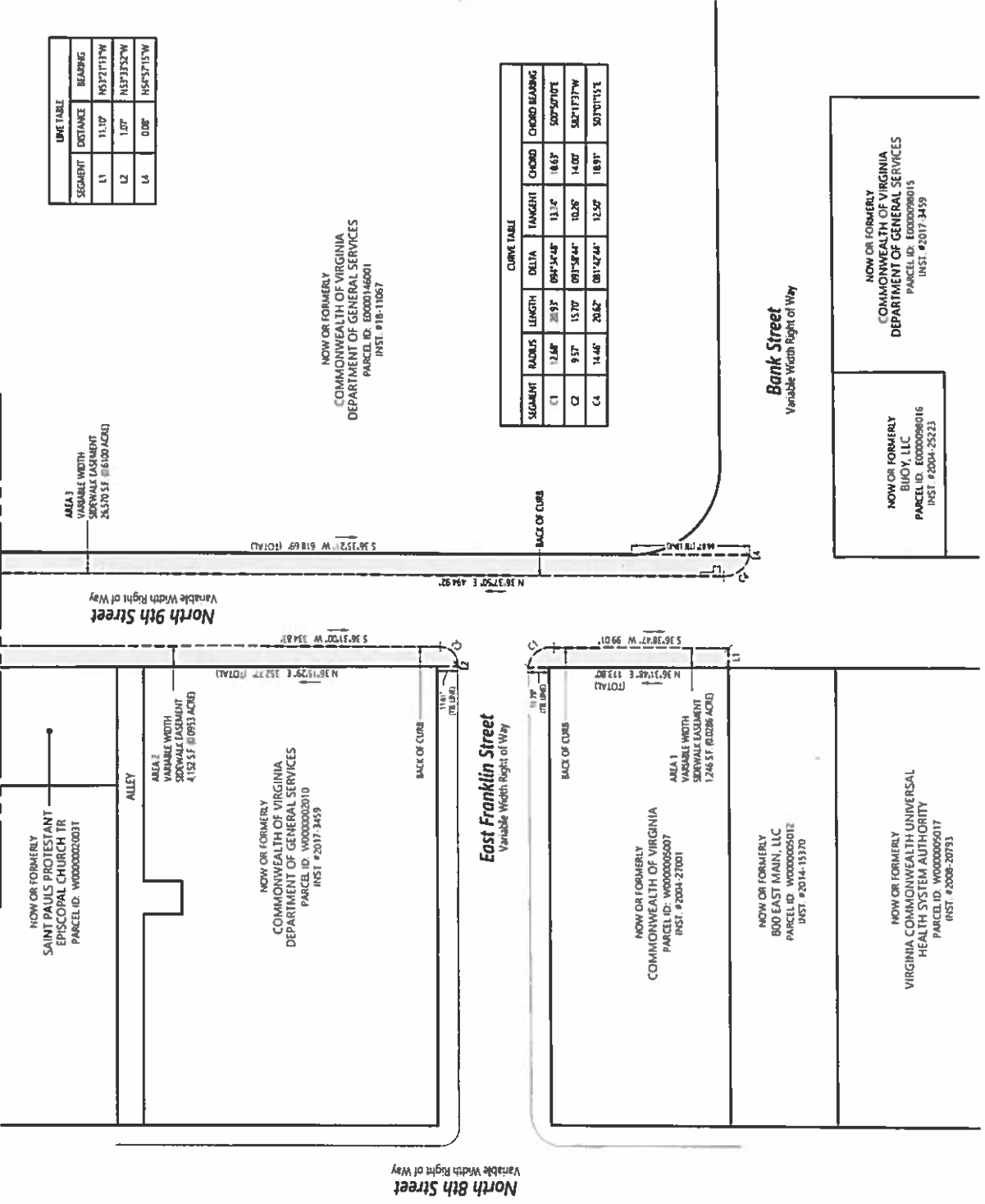
SEGMENT	RADIUS	LENGTH	DELTA	TANGENT	CHORD	CHORD BEARING
C1	12.86'	20.92'	89°34'48"	13.14'	18.63'	S00°50'07"E
C2	9.37'	15.70'	89°15'44"	10.26'	14.07'	S02°17'37"W
C4	14.48'	20.62'	88°15'44"	12.50'	18.91'	S03°01'15"E

**Bank Street**  
 Variable Width Right of Way

NOW OR FORMERLY  
 COMMONWEALTH OF VIRGINIA  
 DEPARTMENT OF GENERAL SERVICES  
 PARCEL ID: E000098015  
 INST: #2017-3459

NOW OR FORMERLY  
 BUCOY, LLC  
 PARCEL ID: E000098016  
 INST: #2004-25223

Matchline - See Sheet Sd-2



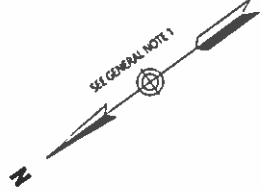
**General Notes**

1. HORIZONTAL DATUM BASED ON PLAT ENTITLED "VACATION OF LOT LINES AND CONSOLIDATION OF MULTIPLE PARCELS" BY AUSTIN BROCKENBROUGH DATED MAY 17, 2018.

# EXHIBIT B (SIDEWALK EASEMENT PG. 2 OF 3)



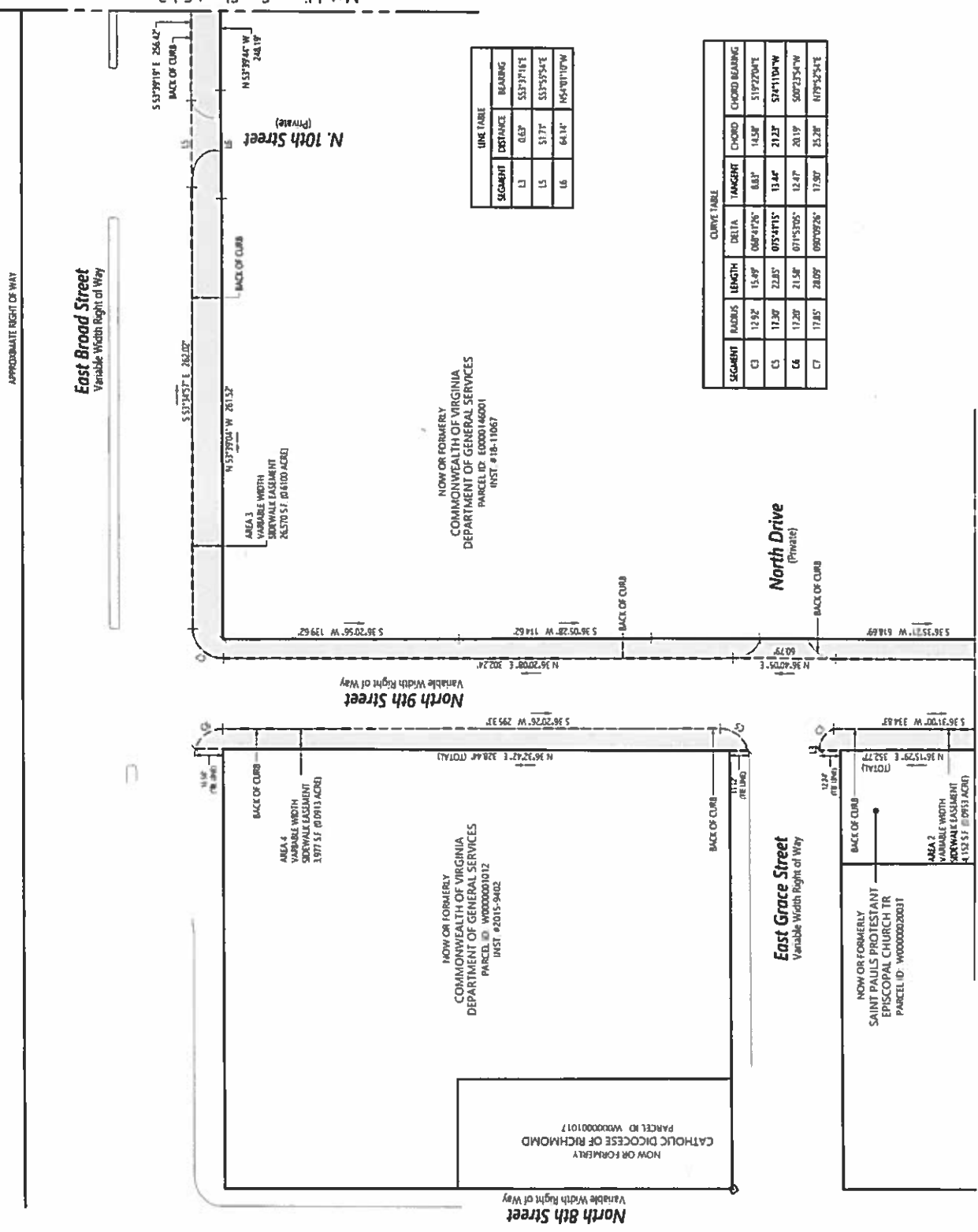
**Vanasse Hangen Brustlin, Inc.**  
 Transportation  
 Land Development  
 Environmental Services  
 Two Columbus Center  
 4500 Main Street, Suite 400  
 Virginia Beach, Virginia 23462  
 757.490.0132 • FAX 757.490.0136



Dist	Dist	Dist	Dist	Dist	Dist	Dist	Dist	Dist	Dist
6	Clear Easements	8'x20'	Dist	8'x20'	Dist	8'x20'	Dist	8'x20'	Dist
5	Addressed Strip	8'x12'6"	Dist	8'x12'6"	Dist	8'x12'6"	Dist	8'x12'6"	Dist
4	Addressed Strip	8'x12'6"	Dist	8'x12'6"	Dist	8'x12'6"	Dist	8'x12'6"	Dist
3	Addressed Strip	8'x12'6"	Dist	8'x12'6"	Dist	8'x12'6"	Dist	8'x12'6"	Dist
2	Clear Easements	8'x12'6"	Dist	8'x12'6"	Dist	8'x12'6"	Dist	8'x12'6"	Dist
1	Clear Easements	8'x12'6"	Dist	8'x12'6"	Dist	8'x12'6"	Dist	8'x12'6"	Dist

**Exhibit Showing  
 Variable Width  
 Sidewalk Easements for  
 Virginia General  
 Assembly Building**  
 City of Richmond, Virginia  
 Scale: 1"=40'  
 February 6, 2019

Drawing Number  
**Sd-2**  
 Sheet 2 of 3  
 Project Number  
 34157.00



LINK TABLE

SEGMENT	DISTANCE	BEARING
L1	0.63'	S33°37'16"E
L5	5.17'	S33°55'34"E
L6	64.14'	N54°10'10"W

CURVE TABLE

SEGMENT	RADIUS	LENGTH	DELTA	TANGENT	CHORD	CHORD BEARING
C1	13.92'	15.49'	68°14'26"	8.81'	14.83'	S19°22'04"E
C3	17.30'	22.85'	07°54'15"	13.44'	21.23'	S74°11'04"W
C4	17.28'	21.58'	07°53'05"	12.47'	20.19'	S00°23'54"W
C7	17.85'	28.09'	09°09'26"	17.80'	35.30'	N07°25'24"E

Matchline - See Sheet Sd-3

Matchline - See Sheet Sd-1

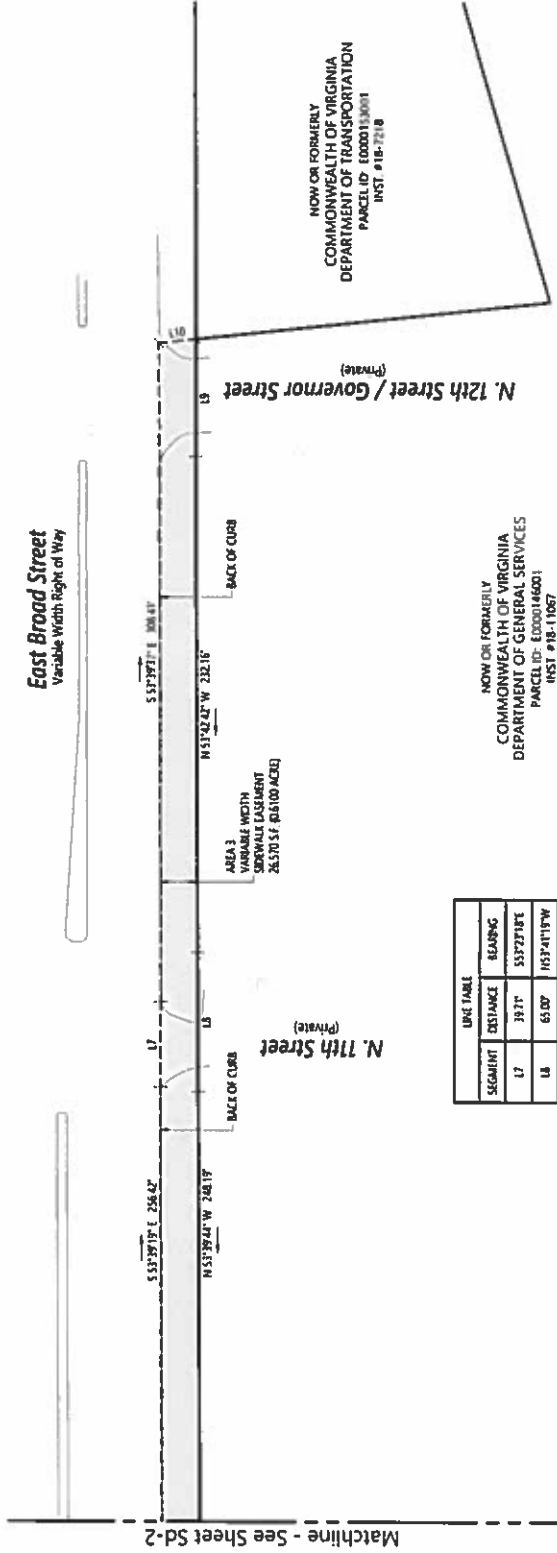
# EXHIBIT B (SIDEWALK EASEMENT Pg. 3 OF 3)



**Vanasse Hangen Brustlin, Inc.**  
 Transportation  
 Land Development  
 Environmental Services  
 Two Columbus Center  
 4500 Main Street, Suite 400  
 Virginia Beach, Virginia 23462  
 757.490.0132 • FAX 757.490.0136

APPROXIMATE RIGHT OF WAY

**East Broad Street**  
 Variable Width Right of Way

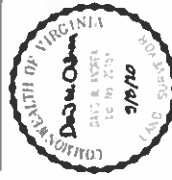


SEGMENT	DISTANCE	BEARING
L7	39.31'	S33°27'18"E
L8	61.00'	N53°41'19"W
L9	55.00'	S33°22'41"E
L10	17.42'	S30°59'42"W



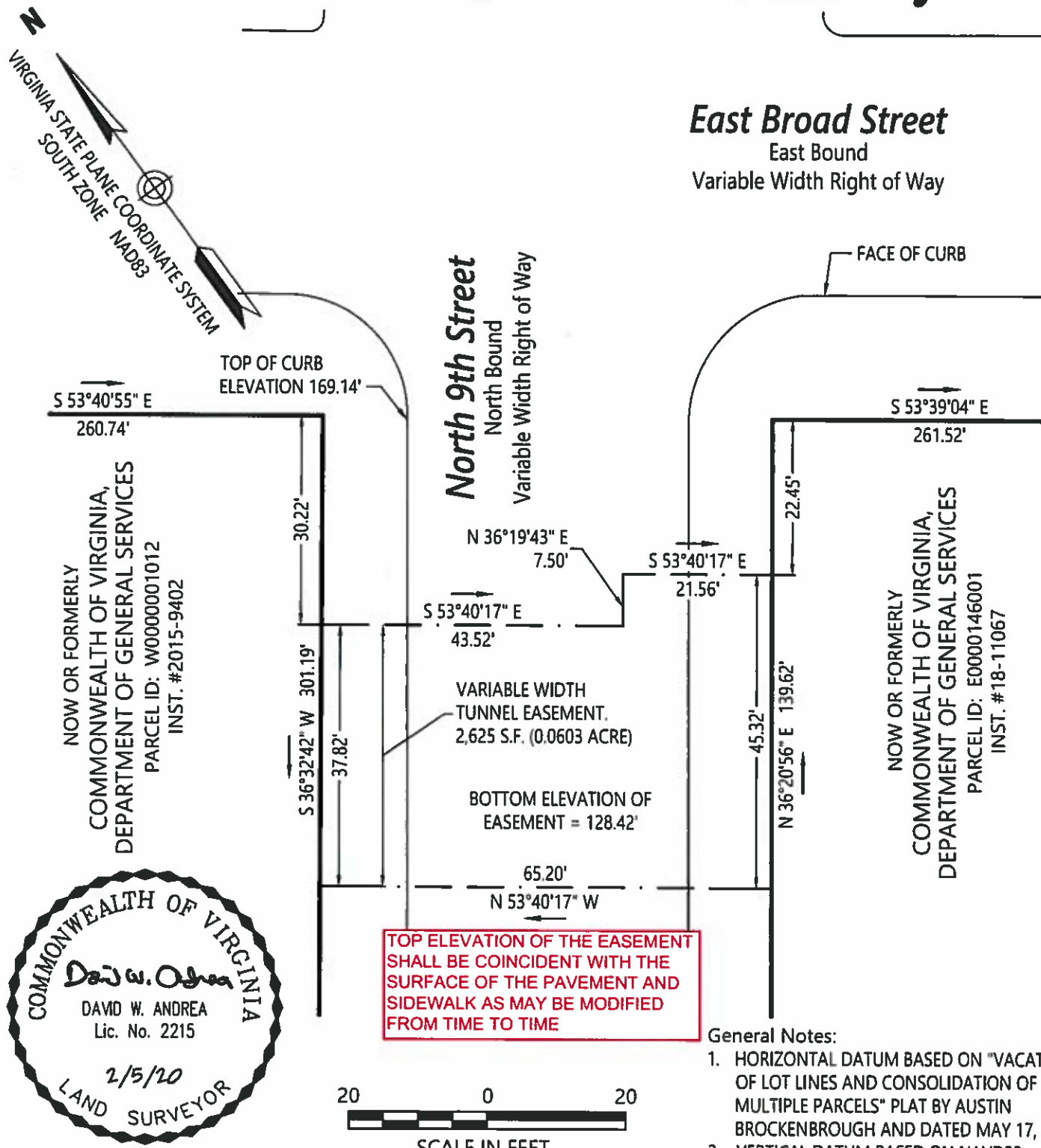
Sheet Comments	Date
1. Addendum Area	8/18/20
2. Alleviating Comments	2/17/20
3. Alleviating Comments	5/29/19
4. Sheet Comments	6/1/19
5. Sheet Comments	2/14/19
6. Revision	Date

**Exhibit Showing  
 Variable Width  
 Sidewalk Easements for  
 Virginia General  
 Assembly Building**  
 City of Richmond, Virginia  
 Scale: 1"=40'  
 February 6, 2019



**Sd-3**  
 Drawing Number  
 Sheet 3 of 3  
 Project Number  
 34157.00

# Exhibit A (PEDESTRIAN TUNNEL)



REVISED: 2/5/20



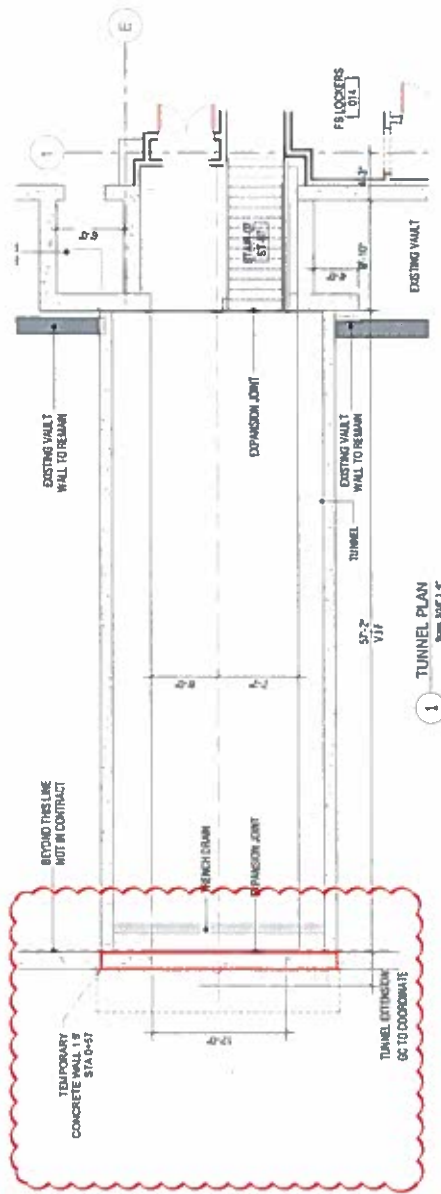
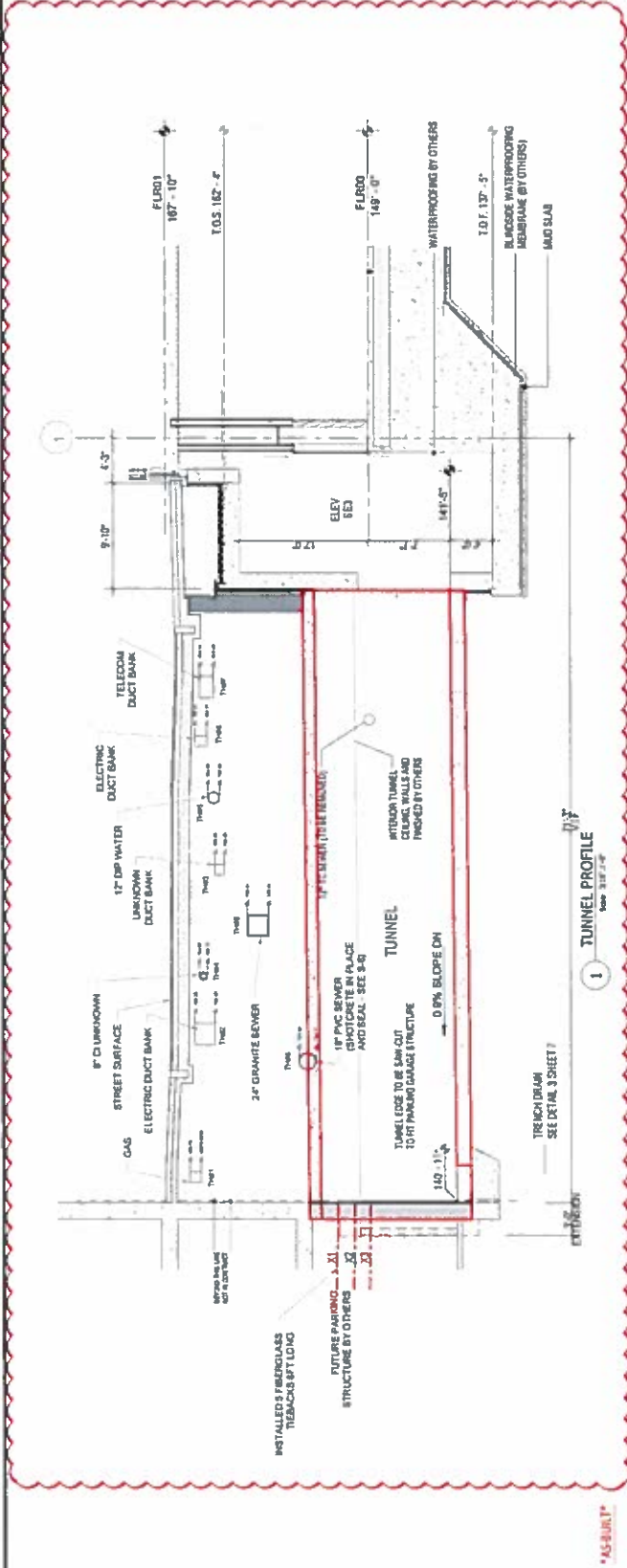
Transportation, Land Development and Environmental Services  
Two Columbus Center, 4500 Main Street  
Suite 400, Virginia Beach, Virginia 23462  
Phone 757/490-0132 | Fax 757/490-0136

Exhibit Showing  
Variable Width Tunnel Easement For  
**Virginia General Assembly Building**  
City of Richmond, Virginia

Date	2/6/19
Scale	1" = 20'
VHBCad File Name	34157tunnel
Project Number	34157.00

# Exhibit B (PED. TUNNEL)

## (UNDERGROUND UTILITIES)



**NOTES:**

- UTILITY INFORMATION HAS BEEN GATHERED FROM TWO SURVEY LINES NORTH AND SOUTH OF THE TUNNEL, DATED 04/25/2017 AND THE UTILITY SURVEY BY BRADSHAW.

REV	DATE	BY	DESCRIPTION
0	10/22/2013	GH	AS-BUILT
1	06/02/2015	GH	ALL DIMENSIONS DETAIL IN NOTES
2	06/02/2015	GH	USE COMMENTS INCORPORATED
3	06/02/2015	GH	USE COMMENTS INCORPORATED
4	06/02/2015	GH	USE COMMENTS INCORPORATED
5	06/02/2015	GH	USE COMMENTS INCORPORATED
6	04/12/2015	GH	USE COMMENTS INCORPORATED
7	04/02/2015	GH	USE COMMENTS INCORPORATED

<b>PROJECT:</b>	VIRGINIA GENERAL ASSEMBLY BUILDING - PEDESTRIAN TUNNEL		
<b>DESIGNED BY:</b>	GH	<b>CHECKED BY:</b>	GH
<b>DRAWN BY:</b>	MM	<b>APPROVED BY:</b>	GH
<b>SCALE:</b>	AS SHOWN	<b>DATE:</b>	10/22/2013

<b>DESIGNER:</b>	<b>ALDEA</b>		
<b>CLIENT/OWNER:</b>	<b>BRADSHAW CONSTRUCTION CORPORATION</b>		

<b>STAMP:</b>	BRADSHAW CONSTRUCTION CORPORATION 175 West Lake Street, Suite 101 Alexandria, VA 22304 Phone: (703) 838-8787 Fax: (703) 838-8744 bradshaw.com		
---------------	---	--	--

<b>PROJECT:</b>	VIRGINIA GENERAL ASSEMBLY BUILDING - PEDESTRIAN TUNNEL		
<b>DESIGNED BY:</b>	GH	<b>CHECKED BY:</b>	GH
<b>DRAWN BY:</b>	MM	<b>APPROVED BY:</b>	GH
<b>SCALE:</b>	AS SHOWN	<b>DATE:</b>	10/22/2013