

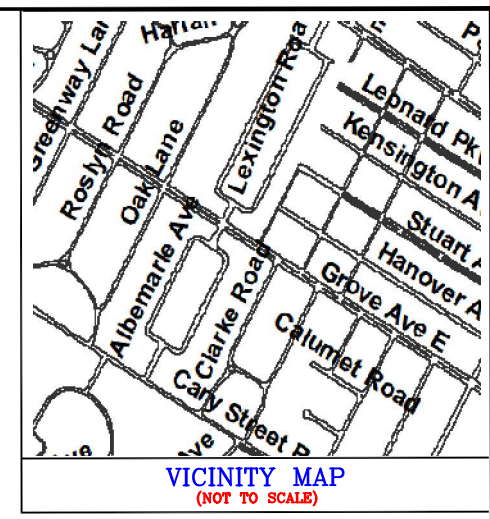
W0200137007  
 300 ALBEMARLE AVE.  
 N/F PEARSON CHRISTOPHER G. AND  
 THORNTON, KATHLEEN A.  
 INSTR. # 2013-8363

**12' Public Alley**  
 (SEE ORDINANCE DATED DEC. 15, 1945  
 ACCEPTING DEDICATION OF COMMUNITY  
 PASSAGEWAYS AS PUBLIC ALLEYS)

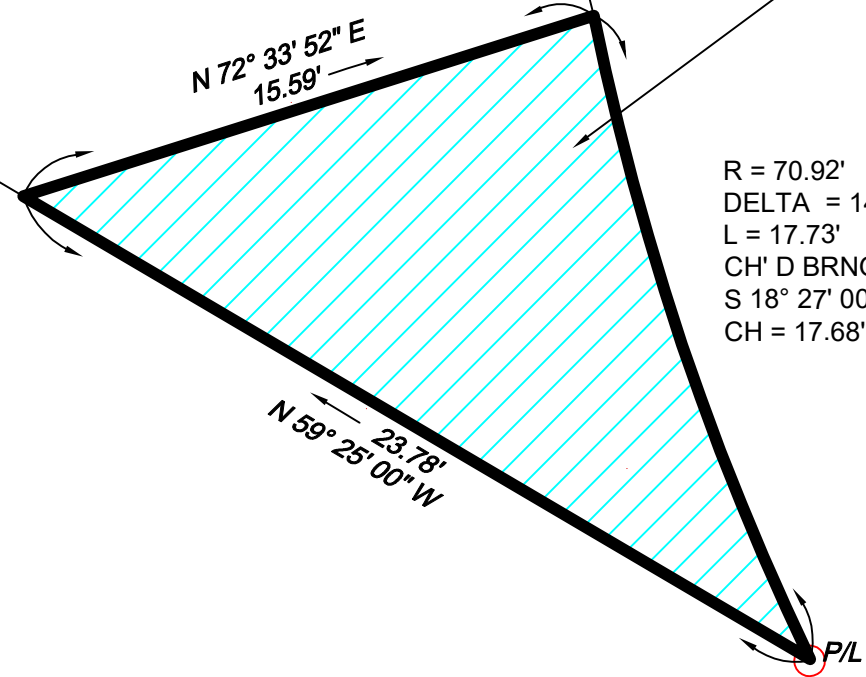
W0200137004  
 5006 GROVE AVE.  
 M2AP LLC  
 INSTR. # 2016-13351

W0200137003  
 5004 GROVE AVE.  
 COOK, RAUL & LYNN E.  
 INSTR. # 2017-12019

PLAT BY POTTS, MINTER & ASSOC  
 INSTR. # 97-2799



VARIABLE WIDTH EASEMENT FOR  
 PUBLIC TRAVEL 131 SQ. FT.



R = 70.92'  
 DELTA = 14° 19' 15"  
 L = 17.73'  
 CH' D BRNG  
 S 18° 27' 00" E  
 CH = 17.68'

**ALBEMARLE AVENUE**  
 40' ± ROW



Scale: 1"=5'

NOTES	
1.	Lot dimensions in parentheses are from deed.
2.	Property owners correct as of _____, 20__
3.	Ordinance Number _____
4.	Adopted _____
5.	Accepted _____

REFERENCES	REVISIONS



DEPARTMENT OF PUBLIC WORKS  
 RICHMOND, VIRGINIA

COMPILED PLAT SHOWING VARIABLE WIDTH  
 EASEMENT FOR PUBLIC TRAVEL ACROSS  
 PROPERTY AT 300 ALBEMARLE AVENUE CITY OF  
 RICHMOND, VA

DESIGN BY: DM	REVIEWED BY:	FIELD NOTES	SCALE	DATE	DRAWING NO.
DRAWN BY: JCZ			1"=5'	7/27/2020	B-28902
CHECKED BY: AVM					