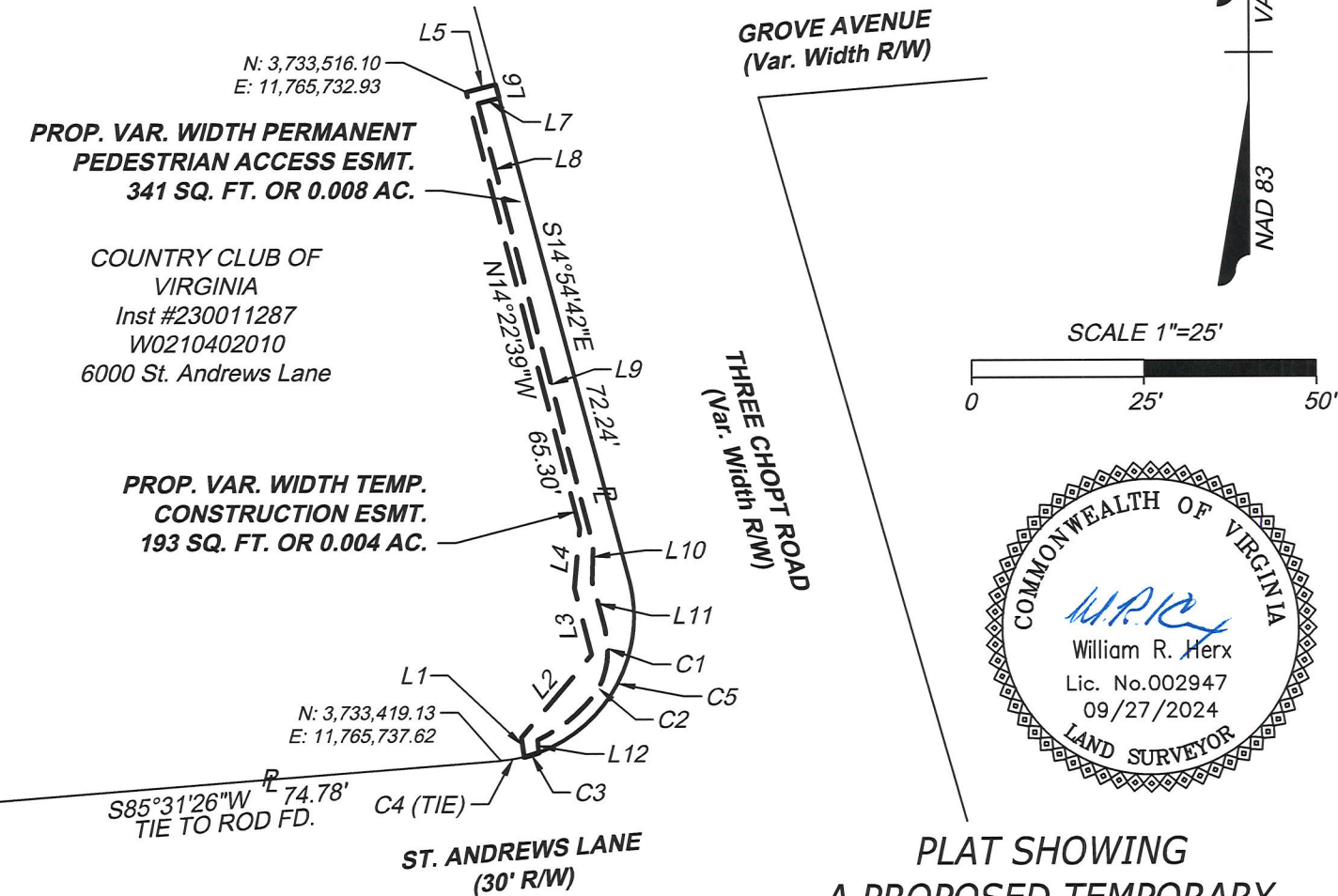


LINE TABLE			LINE TABLE			LINE TABLE		
LINE	BEARING	LENGTH	LINE	BEARING	LENGTH	LINE	BEARING	LENGTH
L1	N7°05'05"W	2.85'	L6	S14°54'42"E	2.00'	L11	S14°46'37"E	7.06'
L2	N40°18'09"E	15.77'	L7	S75°40'12"W	3.14'	L12	S6°00'10"E	1.82'
L3	N14°06'06"W	9.99'	L8	S14°19'57"E	14.44'			
L4	N5°07'15"E	8.67'	L9	S14°23'32"E	51.83'			
L5	N75°26'13"E	4.38'	L10	S1°53'40"W	5.11'			

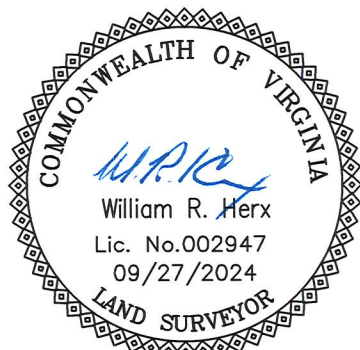
CURVE TABLE						
CURVE	RADIUS	LENGTH	TANGENT	DELTA	CHORD BEARING	CHORD
C1	12.60'	8.87'	4.63'	40°20'43"	S5°27'14"W	8.69'
C2	22.33'	11.91'	6.10'	30°32'52"	S49°45'34"W	11.76'
C3	21.00'	2.25'	1.13'	6°09'00"	S73°13'20"W	2.25'
C4	21.00'	3.38'	1.69'	9°13'36"	N80°54'38"E	3.38'
C5	21.00'	31.18'	19.26'	85°03'32"	N27°37'04"E	28.39'



NOTES:

- 1) THIS IS NOT A BOUNDARY SURVEY.
- 2) THIS PLAT COMPLETED WITHOUT THE BENEFIT OF A TITLE BINDER THEREFORE CERTAIN EASEMENT INFORMATION MAY NOT BE SHOWN HEREON.
- 3) PROPERTY INFORMATION COMPILED FROM CITY COURTHOUSE RESEARCH AND A TIMMONS GROUP FIELD SURVEY.

**PLAT SHOWING
A PROPOSED TEMPORARY
CONSTRUCTION EASEMENT &
A PROPOSED PERMANENT
PEDESTRIAN ACCESS EASEMENT
ALONG THE PROPERTY
OF COUNTRY CLUB OF VIRGINIA**



THIS DRAWING PREPARED AT THE CORPORATE OFFICE 1001 Boulders Parkway, Suite 300 Richmond, VA 23225 TEL 804.200.6500 FAX 804.560.1016 www.timmons.com	YOUR VISION ACHIEVED THROUGH OURS.	CITY OF RICHMOND, VIRGINIA	
		Date: SEP. 27, 2024	Scale: 1"=25'
		Sheet 1 of 1	J.N.: 59142
		Drawn by: R. SPENCE	Checked by: W.R. HERX
		Rev: February 12, 2025	

