

–

# The City of Richmond's Gun Violence Prevention Framework

---

# Background

- Formation:
    - The City's Gun Violence Prevention Framework effort formed in October 2020 to address the generations-long public health crisis of gun violence within the City of Richmond in a bold, intentional and collaborative way. This crisis continues to disproportionately impact Black children, families and communities.
  
  - Mission:
    - To establish a holistic, effective, evidence-based/promising and sustainable Gun Violence Prevention/Intervention Framework that will serve as a public health response to the underlying social, economic, and systemic inequities that promote gun violence within the City of Richmond.
-

---

# Gun Violence Prevention Workgroup

- Focus on community and systems level transformation
  - Centering of community voices, experiences and knowledge on Workgroup
    - Persons living in communities most impacted by gun violence
    - Survivors
    - Family members of victims
    - Community-based and Grassroots organizations and entities working closely within most-impacted communities
    - City offices and agencies include: Mayor's Office, Human Services, OCWB/Community Ambassadors, RPD, RCHD, VCU/VCU Health, DCJS, RRHA
-

---

# Violence & VCU Health

- 51% increase violent-related injuries since 2019
- Difference in severity of injury
- Increase in Youths Involved in Violence
  - 2020: **65** Gun Shot Wounds (GSW) were 18 or younger
  - 2019: **36** GSWs were 18 or younger
  - 2018: **20** GSWs were 18 or younger

(VCU Health Trauma Registry, 2020)

---

---

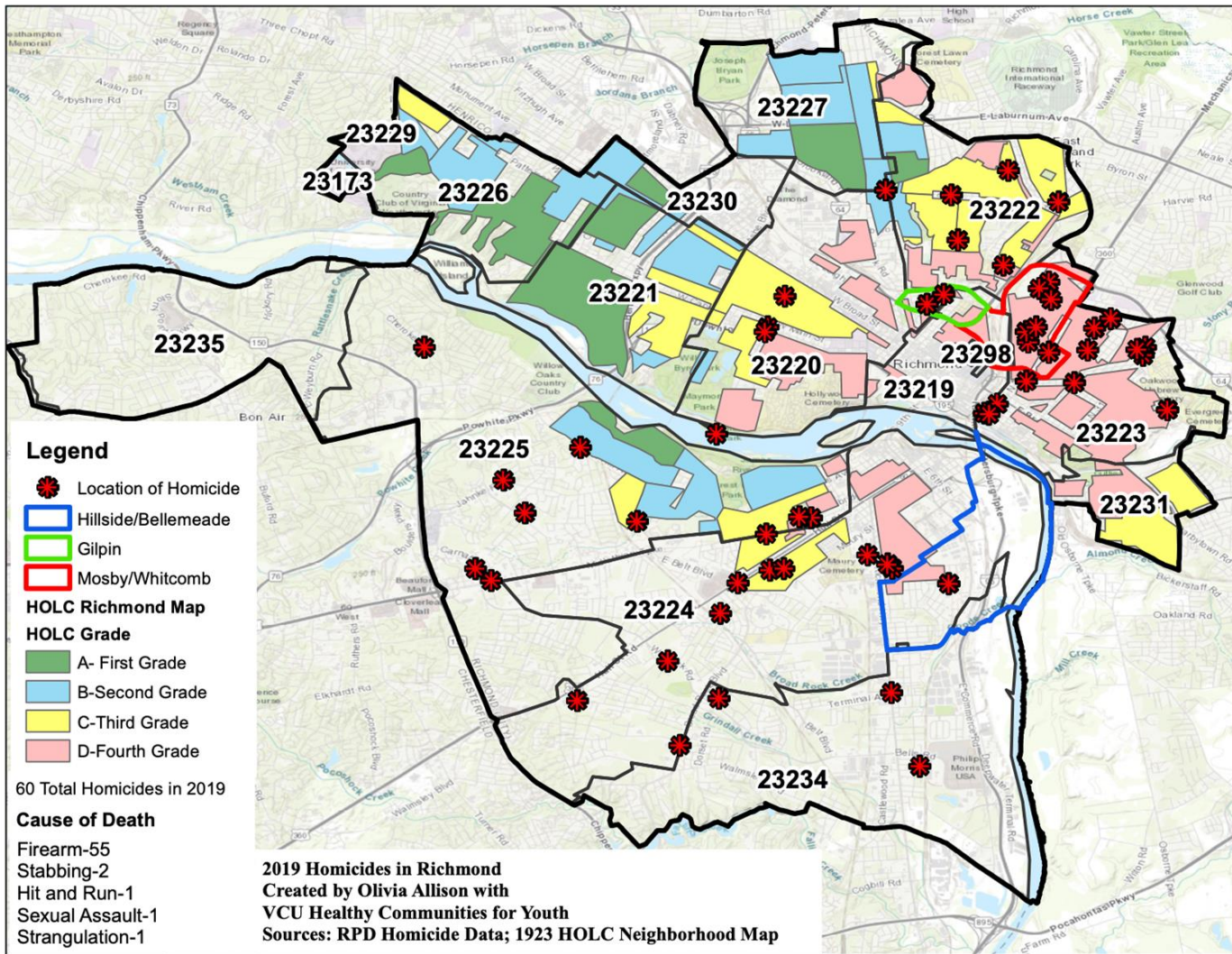
---

# Violence and the Intersection of Race and Poverty

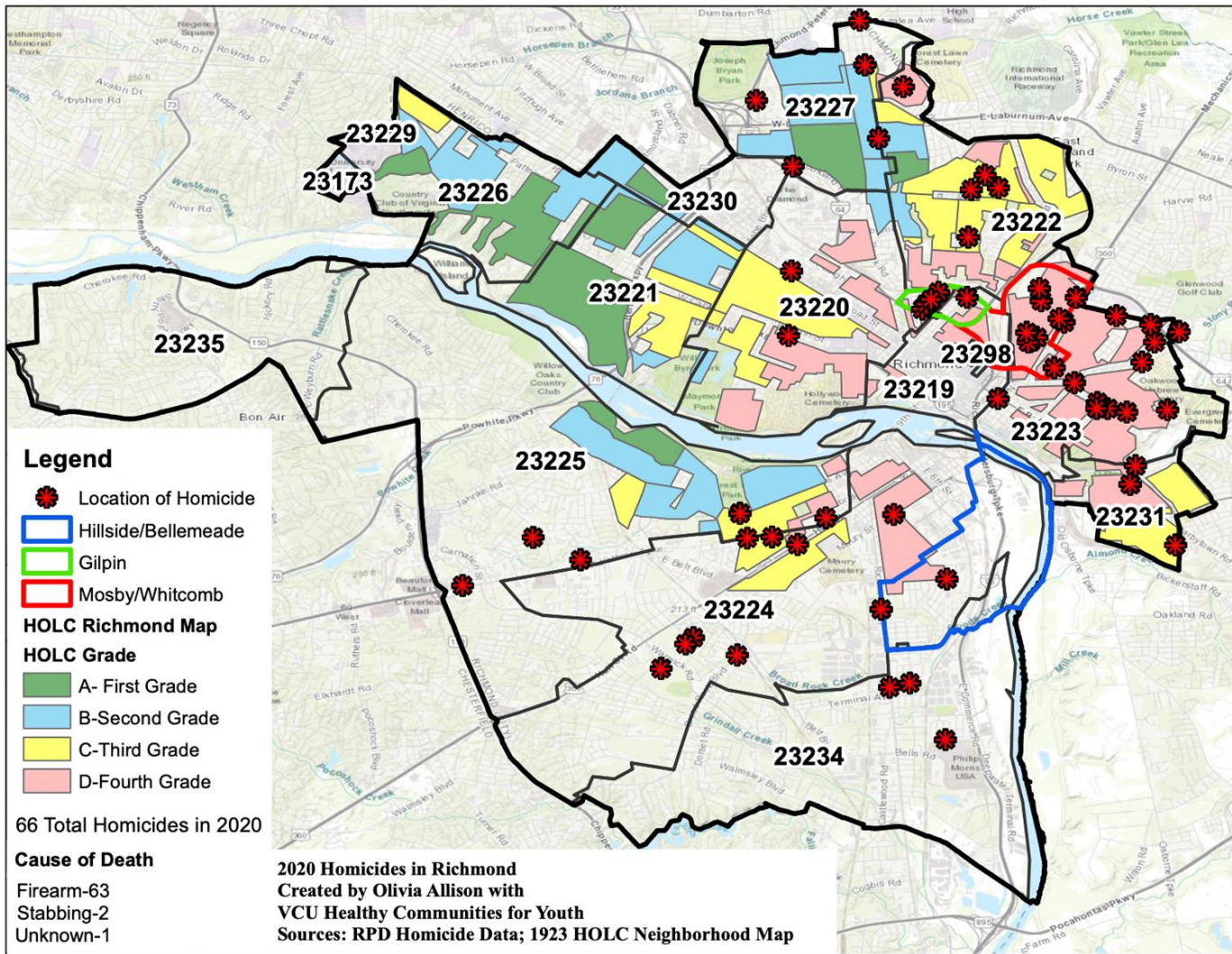
Gun Violence has plagued the black community disproportionately and addressing this falls in line with the state and Mayor Stoney's recognition of racism as a public health crisis.

Those communities that suffer long-term traumatization resulting from gun violence are predominantly low-income communities of color; the issue of gun violence is rooted in racial/health inequity and injustices experienced for generations by people of color.

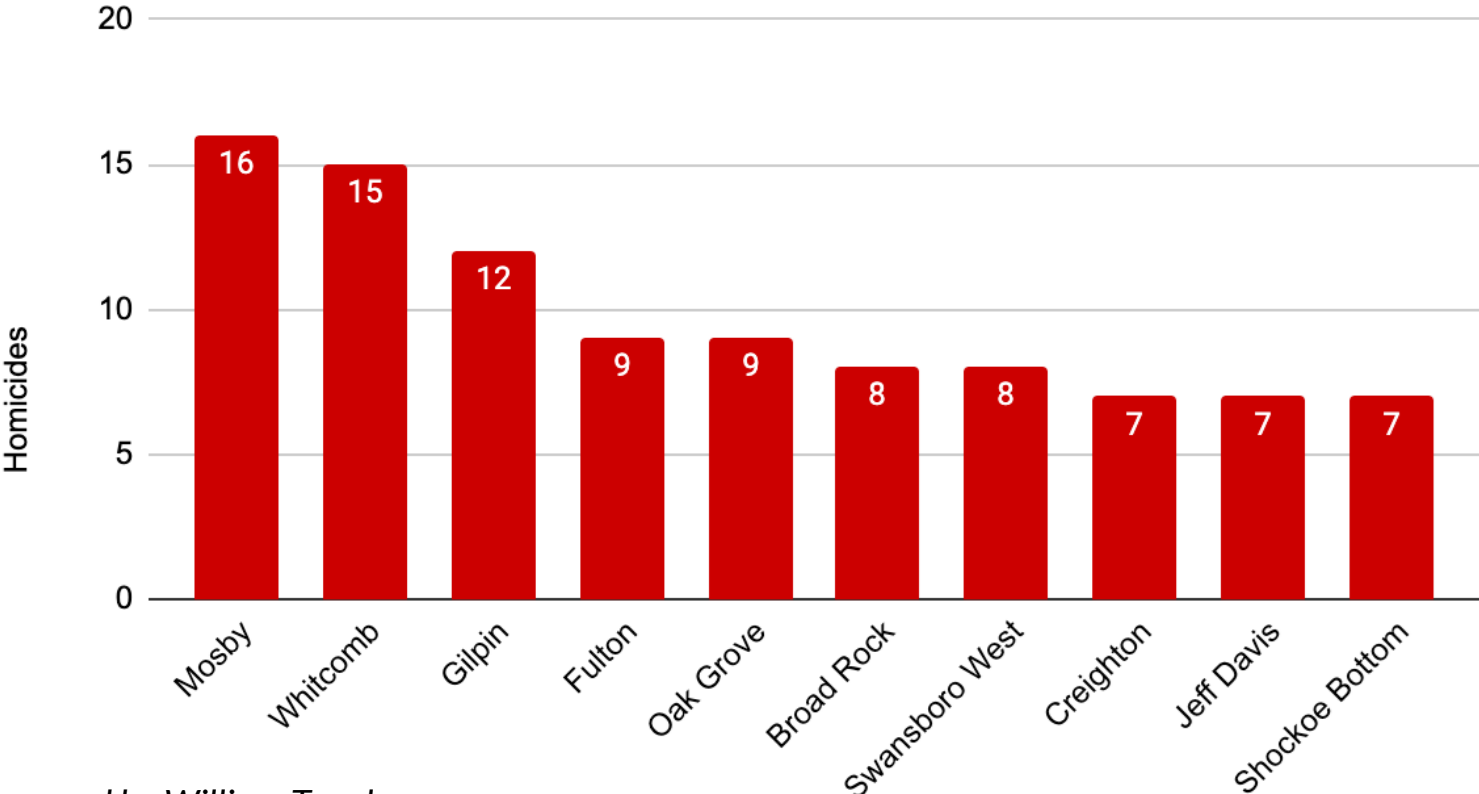
---







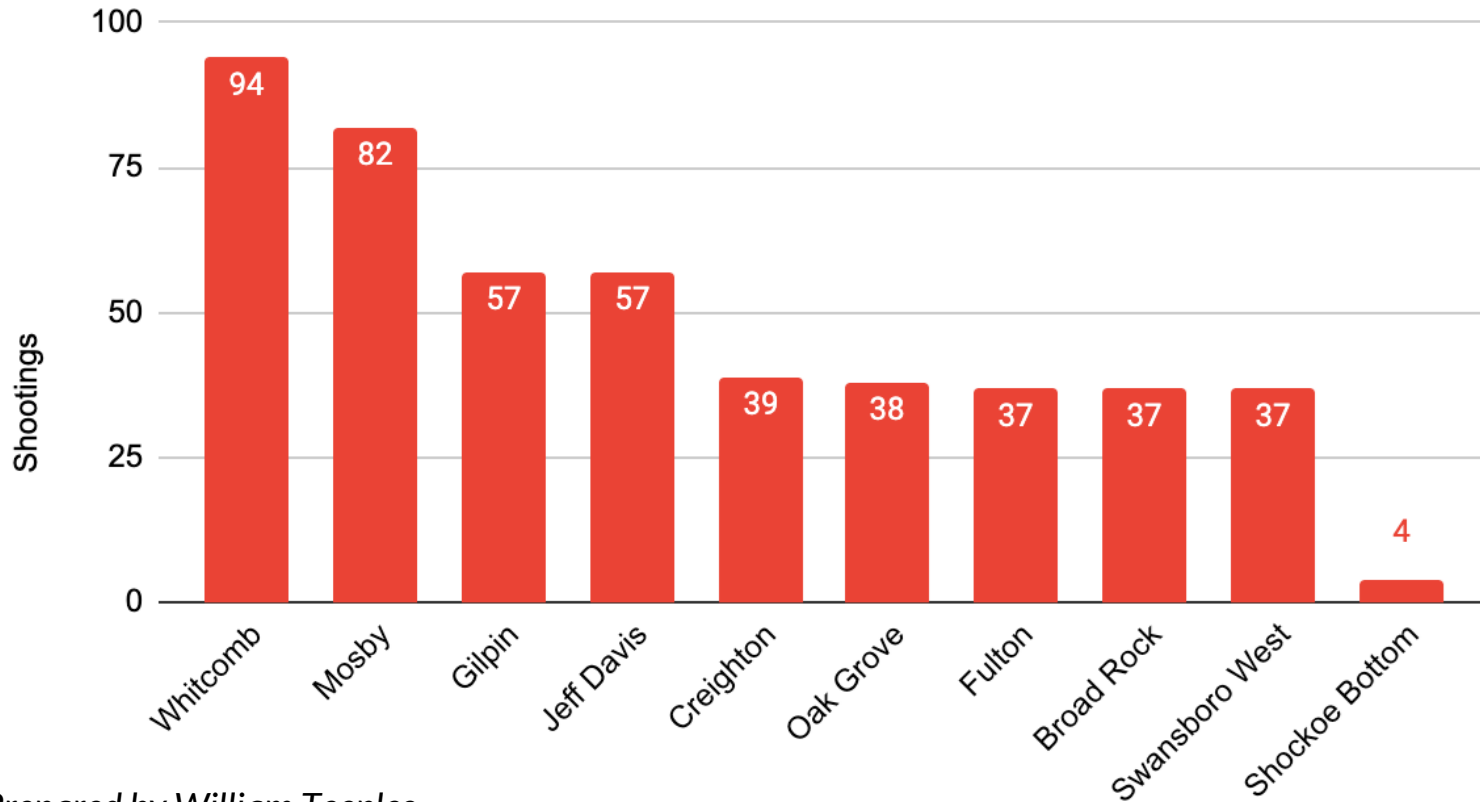
# Homicides by Neighborhood 2017-2021



Prepared by William Teeples

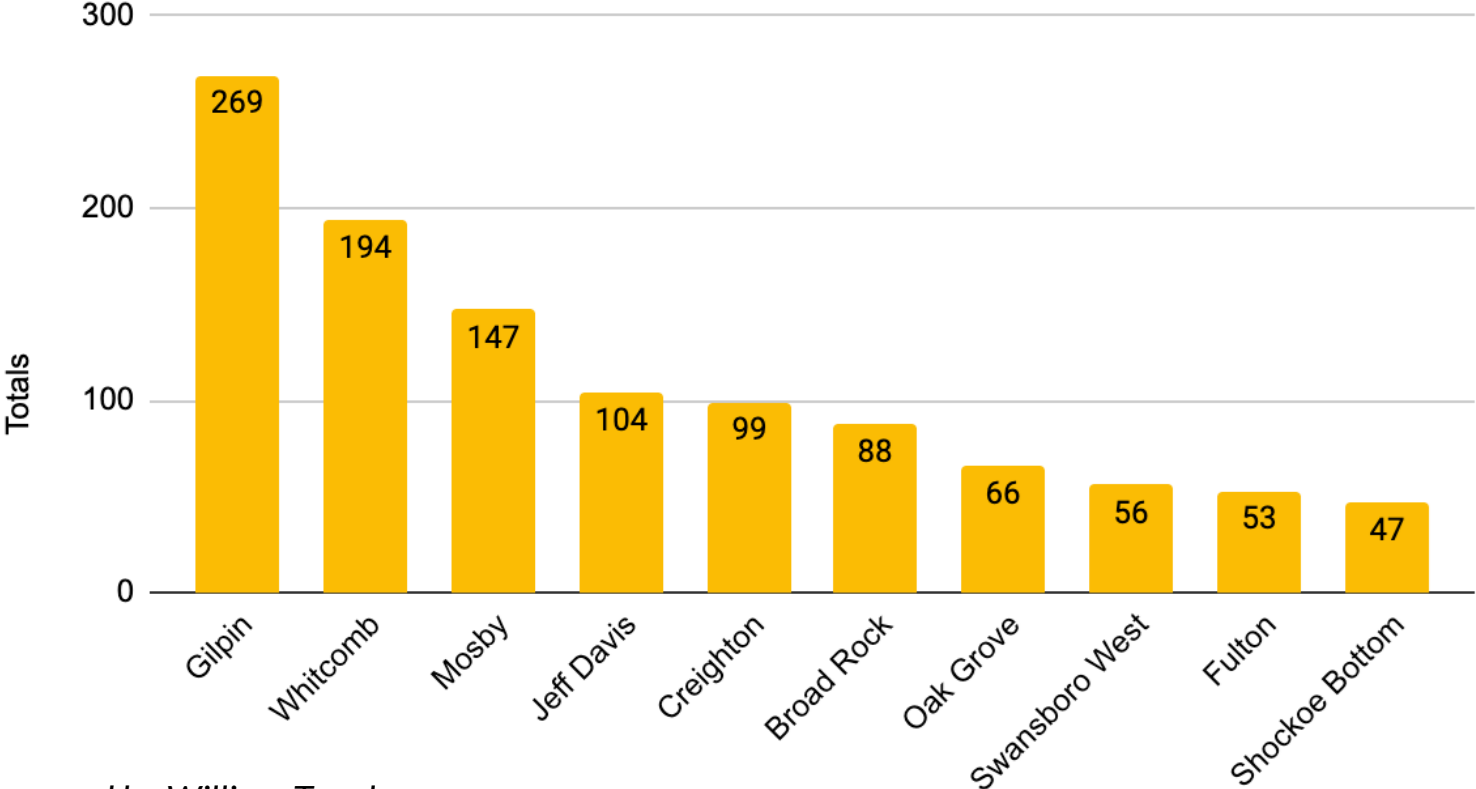


# Shootings - At/within occupied dwelling or vehicle 2017-2021



Prepared by William Teeples

# Weapon Violations 2017-2021



Prepared by William Teeples

*Establish a community-oriented team comprised of a variety of stakeholders to assess shooting and homicide cases and provide insight into the nature of homicides from individual, community, social determinants of health and root cause perspectives to better understand the issue and prevent future shootings*

Homicide & Shooting  
Review Commission

Crisis Intervention &  
Wraparound Support

*Development of a Community Response to Shootings and Other Acts of Violence. Community organizations that are able to provide participants and their families with access to healthcare, employment, housing, etc.*

*Enhance prevention efforts for youth and their parents, young adults/adults, and communities most impacted by gun violence. This component may include the following:*

- Workforce Development initiative for youth and young adults
- Enhanced community programming/mentoring for youth
- Behavioral health/mental support for participants and community members
- Support for returning individuals (formerly incarcerated persons)
- Community education and resources

Prevention

## Richmond GVP Framework

Intensive Case  
Management

*Supportive Initiatives that Assist Victims of Violence with Transitioning Back into their Communities:*

- Bridging the Gap

*Concentrated Training in De-escalation, Conflict Resolution, Motivational Interviewing, Family Mediation, Substance Misuse, & Gang Tactics. Evaluation and evidence-based practices utilized throughout model.*

Training & Quality  
Assurance

Credible Messengers

*Immediate Response for Families, Friends, and Survivors:*

- Beside Response: VCU Health System
- Community-Wide Response utilizing existing partners and community members.

# Phase 1

## Prevention/Youth Programming

- Positive Environments & Memorable experiences - Intentional opportunities through high quality programs for youth & families.
- Behavioral Health - Mental health support for participants and community members.
- Youth Employment & Mentorship - Rotational employment opportunities coordinated through the Office of Children & Families using behavioral health counselors.

## Community Connectors/Credible Messengers

- Credible Messengers - Trusted community members that can support youth and defuse conflict in hospital-based response and community-wide.
- Community Connectors - Provide trauma support and culturally responsive healing services for communities in need.

# Phase 1 - Continued

## Training & Quality Assurance

- Training in de-escalation, conflict resolution, motivational interviewing, family mediation, substance misuse & gang tactics.
- Evaluation utilized throughout the process.

## Shooting & Homicide Review Board

- Community-oriented team comprised of community members, police, and other stakeholders. The board will assess shooting and homicide incidents to better understand the factors that may have influenced the incident and work to counter these risk factors.

## Intensive Case Management

- Supportive Initiatives that assist victims of violence with transitioning back into their communities.



---

# Crisis Intervention & Wrap Around Services

A culturally responsive community based rapid response to trauma

---

# We have an obligation to fund this work because our residents are saying...

“I don’t feel safe here... I feel like I will die here. **Can you help me?**”

“I have lived here for **2 years**, seen many violent situations and this is the first time **anyone has ever checked on me** this way and **asked me how I feel.**”

After hotel stay...“Wow, no one has ever done this before. I needed this. **My kids needed this.** We are scared to go home but I feel more calm now”

“Count me in! **I will come to the support groups [grief and loss groups].** I have some ideas too. I want to help build this”

“I have a therapist with X agency and it **took 3 months to say one word to them....** even though I just met you ...**I’m ready to share my whole story. Can you be my therapist?**”

After working with survivor on breathing techniques....”Thank you so much. **Do you think someone can speak with my granddaughter and daughters?**”

# Key Components of Community Based Crisis Response

1. Complement VCU hospital based bedside response component of GVP framework
2. Focus on **culturally responsiveness**, **community healing**, **resilience and trust**
3. **Tailors** a **coordinated rapid response** to the community
4. Relies on **Credible Messengers & Community Connectors** to perform **outreach to assess trauma impact & need**
5. Includes immediate relief i.e. food, hotel, crisis stabilization aided by residents
6. Coordinates culturally responsive services based on outreach assessment
  - a. Peer support from Credible Messengers/ Community Connectors
  - b. Mental Health- uses relatable and alternative payment methods **where insurance is a barrier**
  - c. Education
  - d. “Non mainstream” cultural healing methods- music,dance, drumming, yoga, art, gardening etc
7. Wrap around response services(if not already) **remain in community** and become a part of the **prevention**
8. Residents connected to **advocacy** opportunities

---

**This is not a siloed  
response.**

---

## Supplements with existing institutional efforts

- VCU Crisis Intervention(intentional part of framework)
  - Reimagining Public Safety Recommendations
  - East End Safe Communities
  - RBHA Crisis Line & Friends of Prevention Coalition
  - Childsavers
  - RPS Mindfulness goals
  - RCHD Resource Center Community Health Worker program
  - RRHA Public Safety Prevention/Intervention
-



---

# Impact of Community Based Crisis Intervention

- Reduce harmful post traumatic response behaviors and/or engagement in high risk behavior (i.e. conflict, retaliation, overdose etc) in communities
  - Reduce the likelihood for future violent incidents in our community
  - Increase residents' feelings of being cared for and connected
-