



CITY OF RICHMOND

**DEPARTMENT OF PARKS, RECREATION
& COMMUNITY FACILITIES**

January 27, 2023

To: Planning Commission

This letter is to confirm that Parks, Recreation and Community Facilities (PRCF) have been in contact with the Richmond Fire Department about moving the soccer field to allow for the transition of the Fire Department to pursue the development of the burn building facility in that location. Parks, Recreation and Community Facilities (PRCF) is working across agencies to evaluate all City of Richmond property owned in this area and its best potential use. Currently seven acres are under PRCF's management and there is an additional 19 acres that are being reviewed for use. As part of this review, City staff are looking at these acres to add additional greenspace and connectivity to this park to better serve our community. Since Special Capital Projects is leading this first stage, they will be providing an additional document that provides the opportunities for this space. Due to the immediate needs of the Fire Department, Special Capital Projects has taken the first step. It is the City of Richmond's intent to move forward with future development of these additional acres and to protect greenspace for our residents. The City of Richmond will engage the community as we move forward in the development of what amenities residents would like to see. In the interim, soccer participants can use the newly built field at this park location that has lights. Parks, Recreation and Community Facilities is also excited to work with the Fire Department to partner on using the existing community center for their training of fire recruits. The Fire Department will be making enhancements to this space as well. We will still offer our programming at this site but will also work with the Fire Department to provide critical training for their firefighter's and fire and life safety educational programs to the community.

Sincerely,

Christopher Frelke
Director

Title

City of Richmond,
Virginia



Legend

2 ft contour interval

Structures

- Building
- Deck/Patio
- <all other values>

Transportation

Surfaces

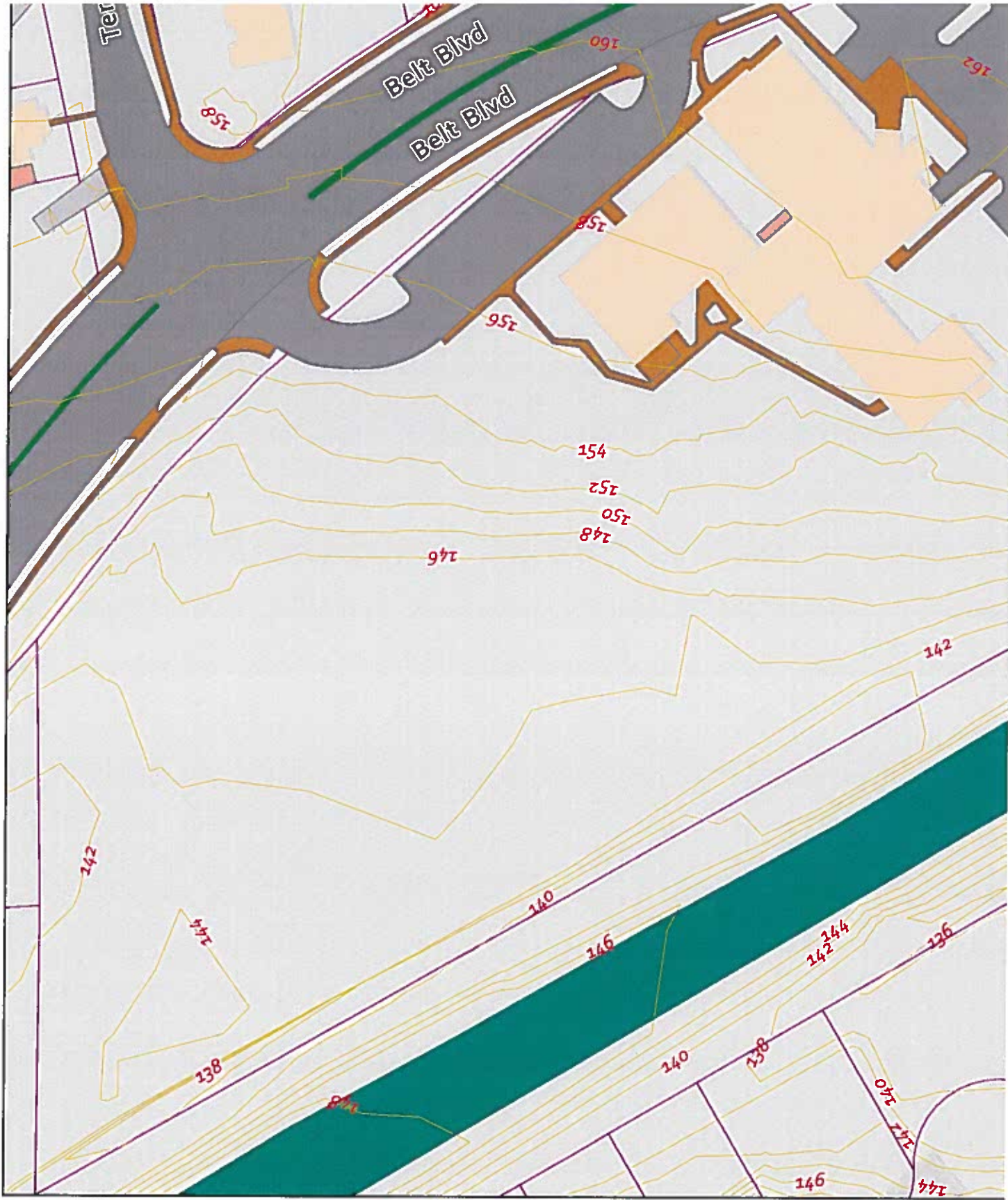
- Ballast
- Driveway
- Parking
- Bridge
- Overpass
- Median
- Sidewalk
- Alley
- <all other values>

Trails and Paths

Status

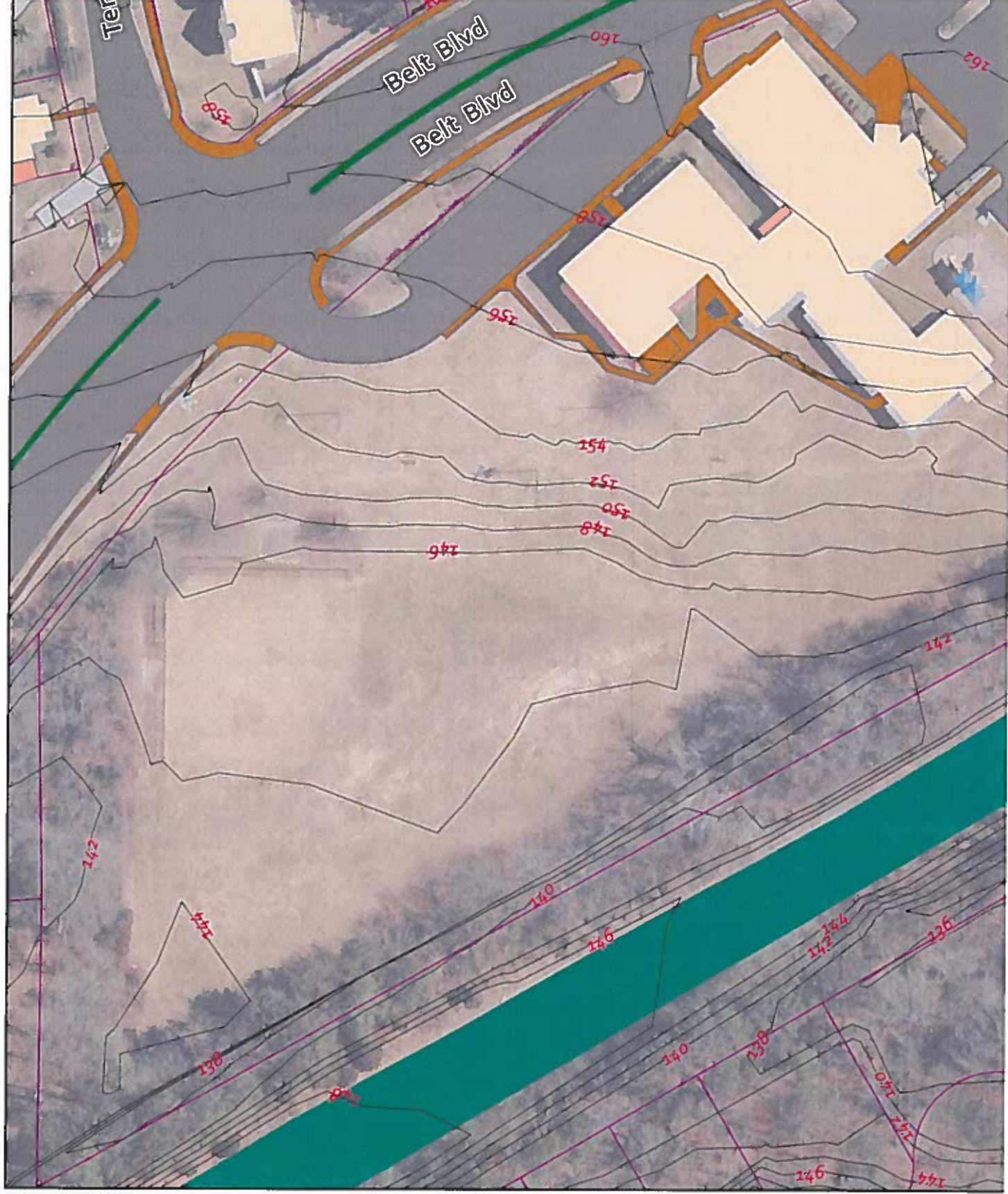
- Completed
- Construction/Pending
- Funded
- In Design
- Proposed
- <all other values>

- Centerlines
- Parcels
- Streams_Polygon
- Roads (Polygon)



3000 E Belt Blvd

City of Richmond,
Virginia



Legend

- 2 ft contour interval
- Structures**
 - Building
 - Deck/Patio
 - <all other values>
- Transportation Surfaces**
 - Ballast
 - Driveway
 - Parking
 - Bridge
 - Overpass
 - Median
 - Sidewalk
 - Alley
 - <all other values>
- Trails and Paths**
- Status**
 - Completed
 - Construction/Pending
 - Funded
 - In Design
 - Proposed
 - <all other values>
- Centerlines
- Parcels
- Streams_Polygon
- Roads (Polygon)