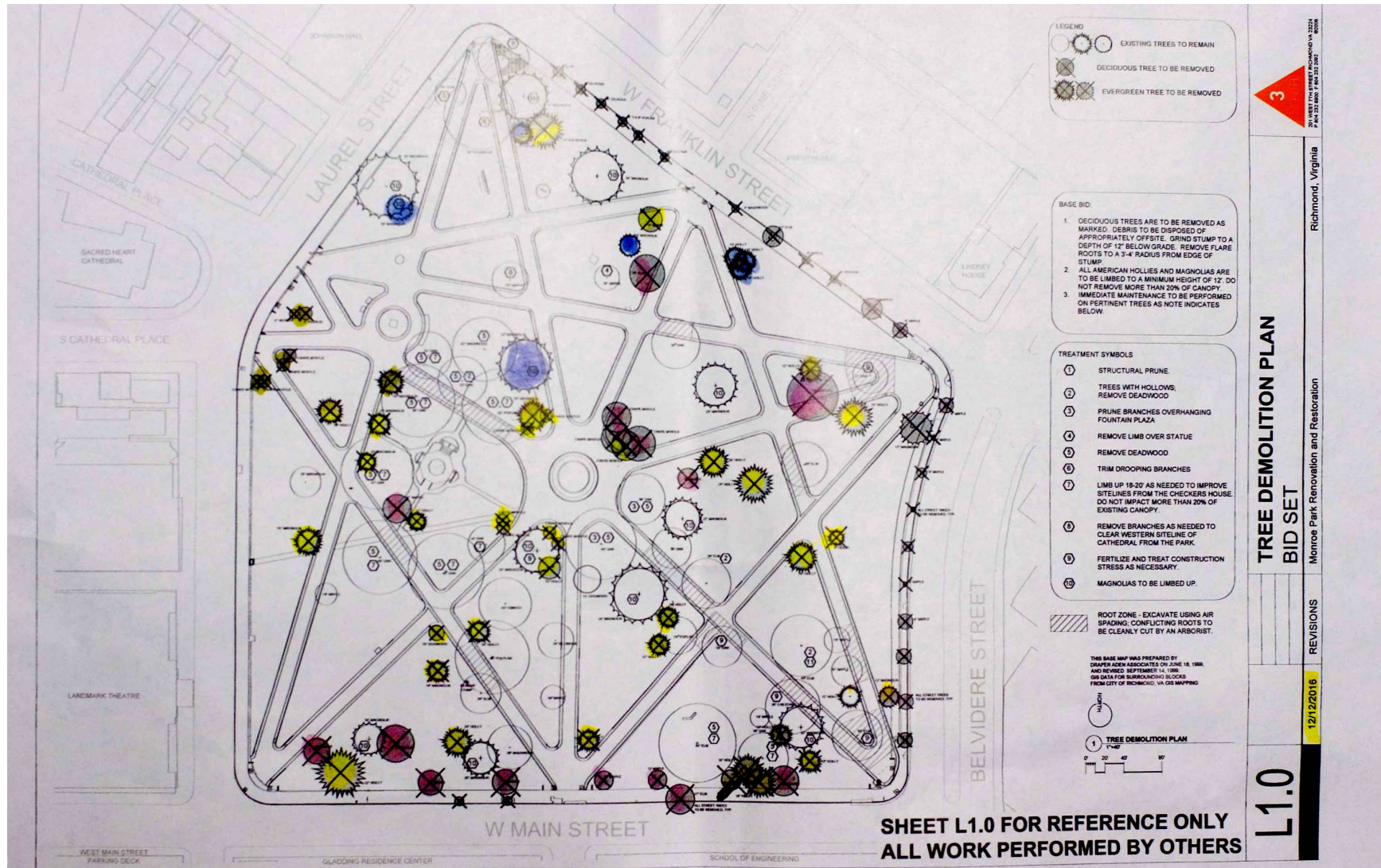
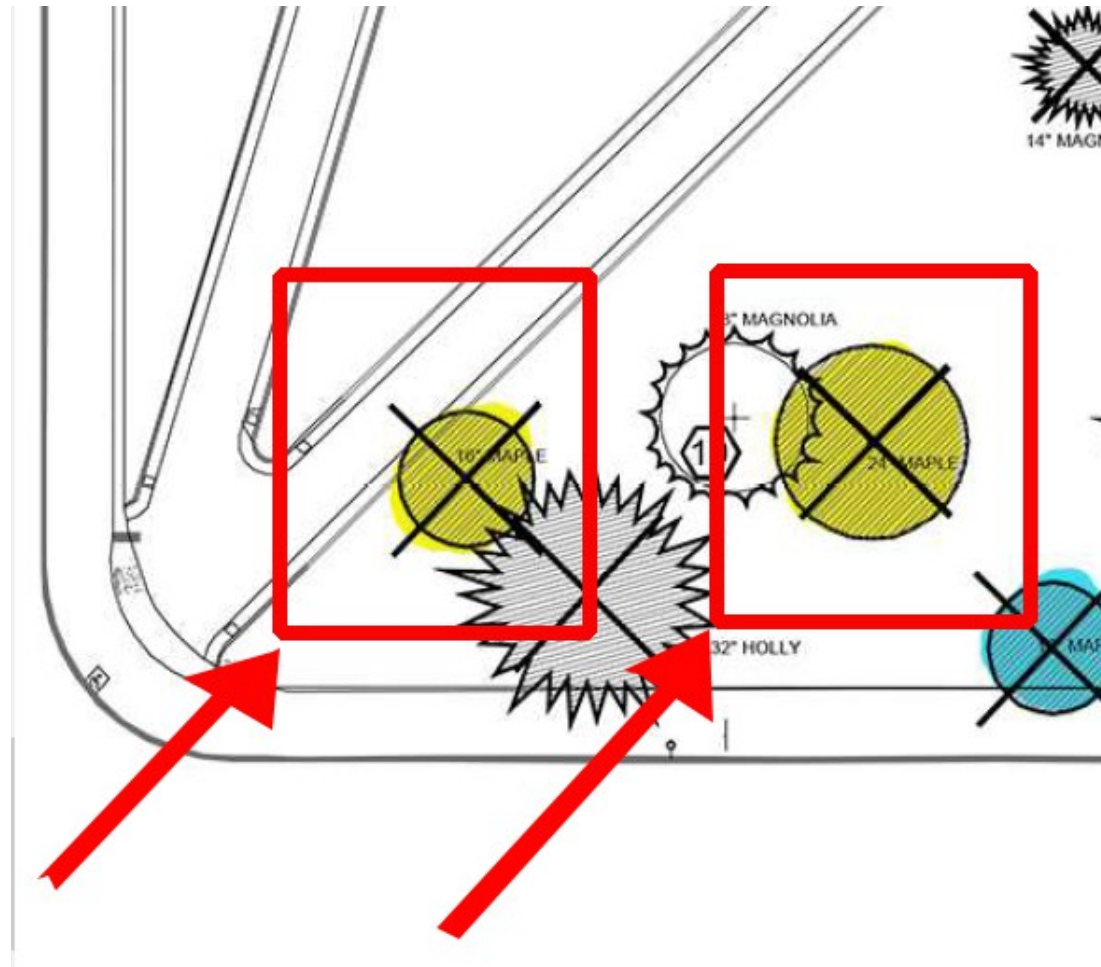


Monroe Park Tree Demolition Plan should not be approved after the unauthorized removal of 14 trees



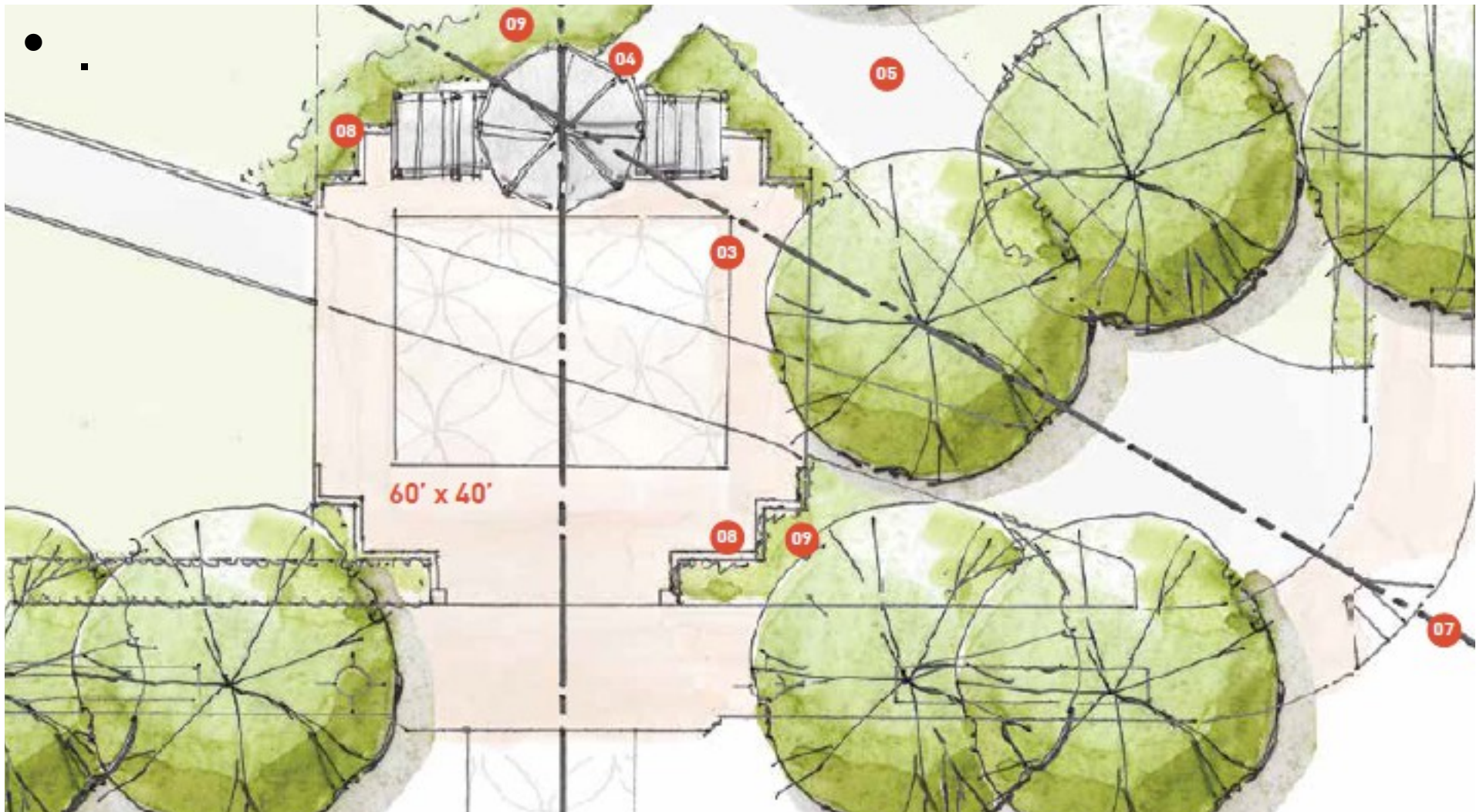
Photos show that several of the trees identified as “dead” were healthy, such as these two trees at Main and Laurel Streets



This 12/1/16 Times Dispatch photo shows the two healthy trees at Main and Laurel that were described as “dead” by City Arborist



Were mature healthy trees cut down for the controversial party-pad for tent and pavilion that resembles a bus stop?



Photos show that the mature ginkgo tree removed at Franklin St. was healthy and not “dead” as alleged by City Arborist



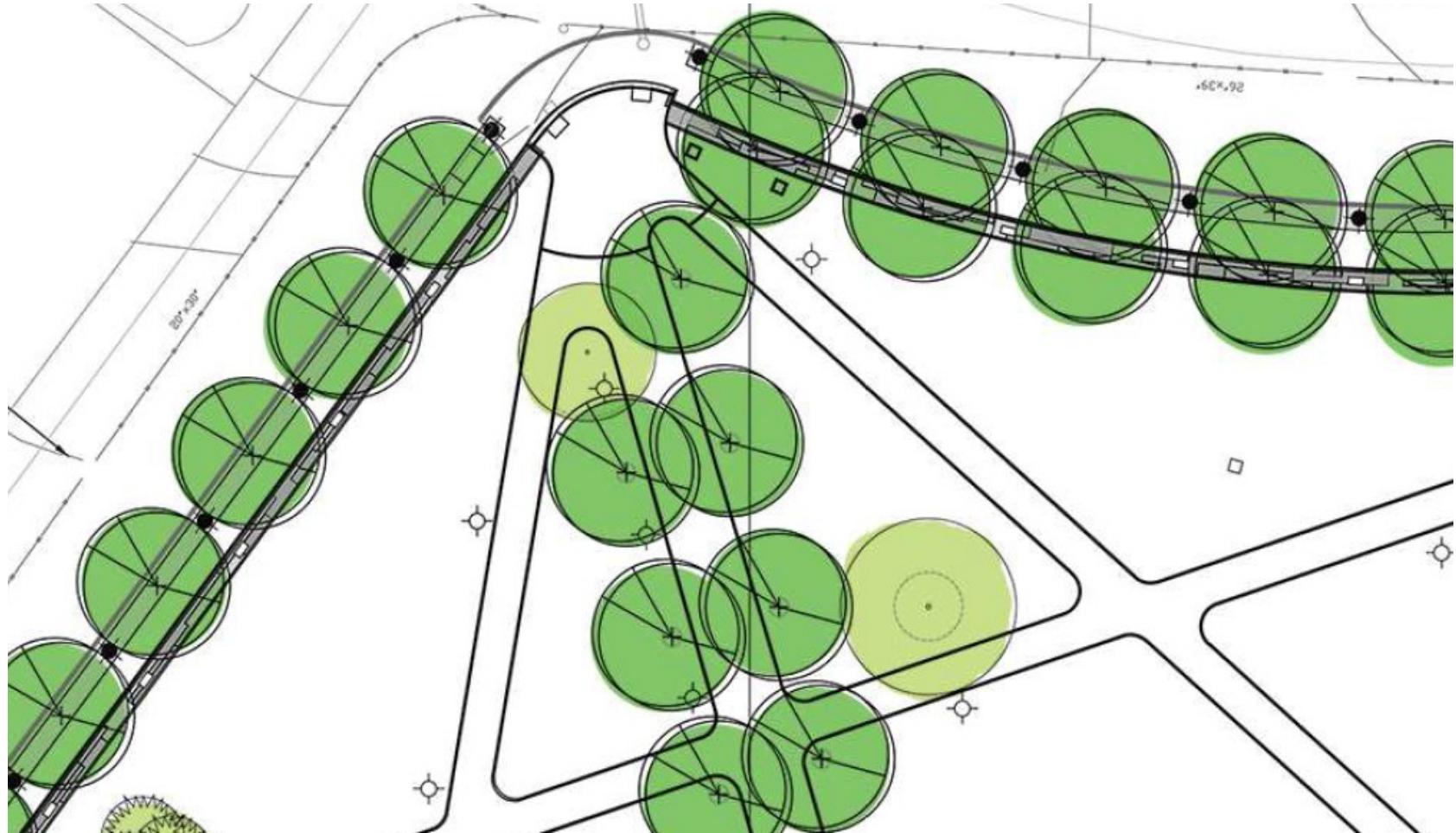
This mature ginkgo tree was healthy as shown in this late autumn 2016 photo. Tragically it was cut down as “dead.”



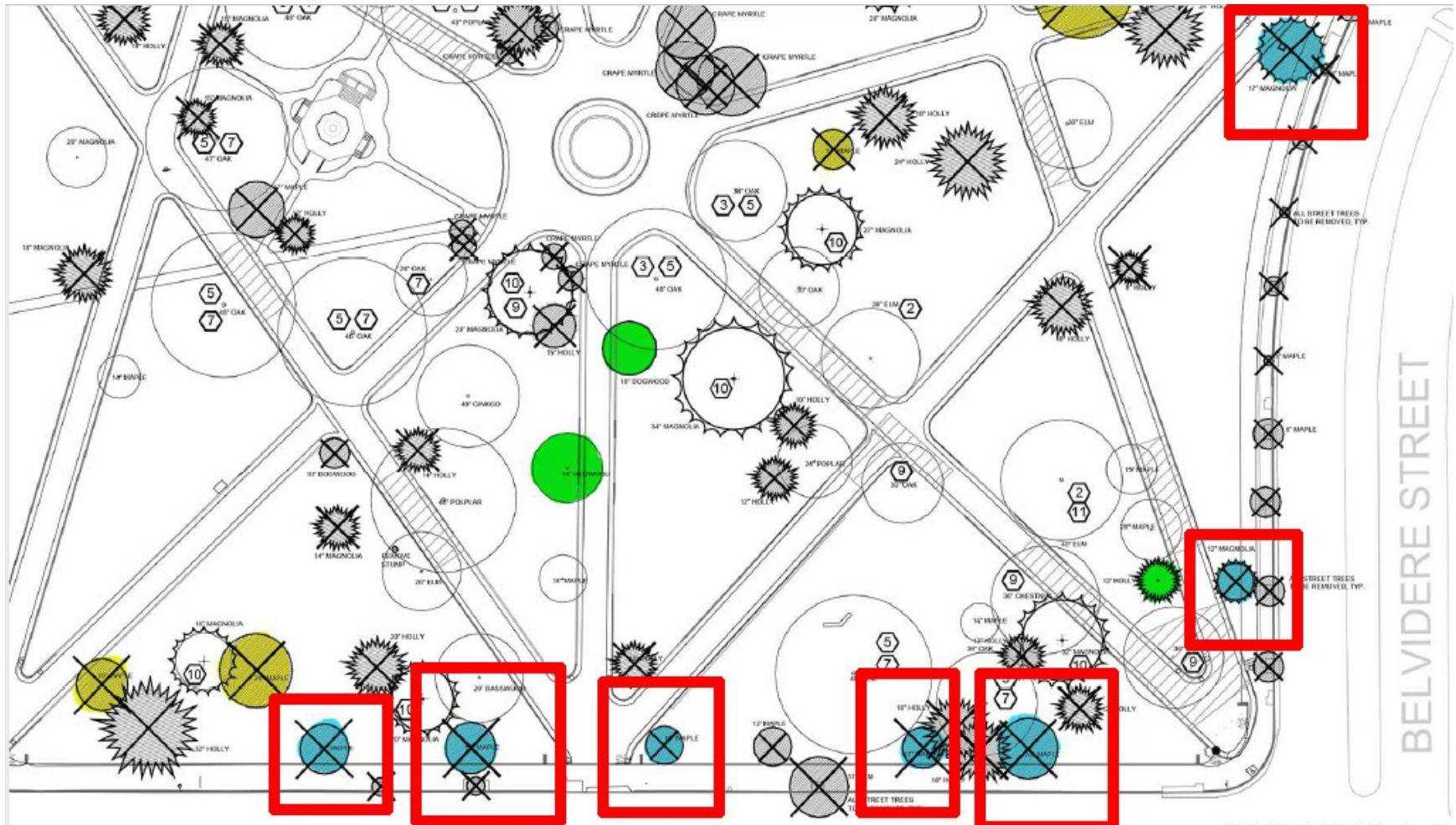
Another late autumn 2016 photo showing the healthy ginkgo tree that was removed as “dead.” Source: Fans of Monroe Park



Was the healthy, mature ginkgo tree cut down simply because it did not match the proposed allee tree spacing?



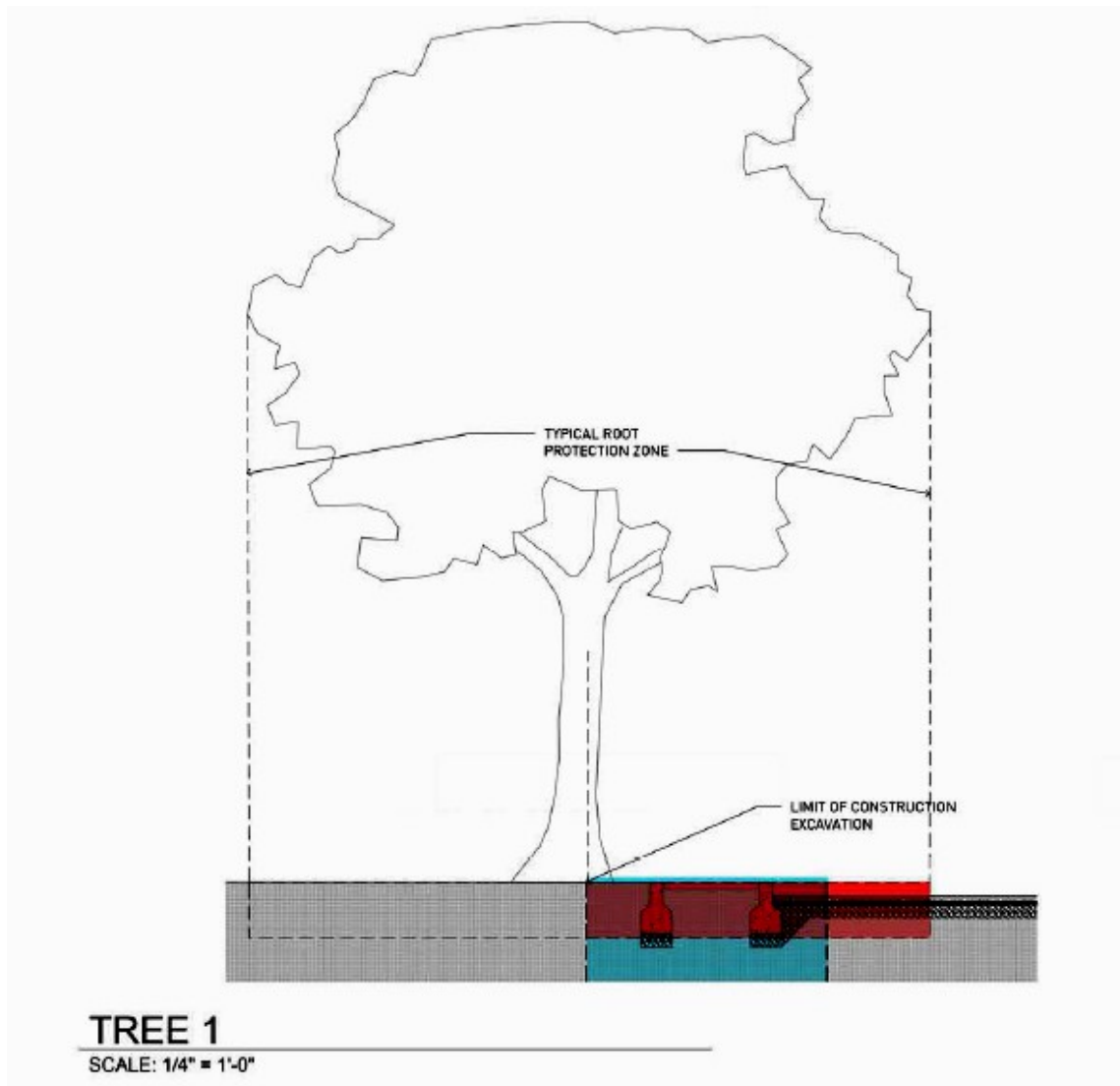
Tragically 7 mature healthy trees were removed without authorization and without proper permits allegedly for “bio-retention”



Fall 2015 Tredegar Dronework photo with the healthy trees that were removed without permit, allegedly for “bio-retention.”



Monroe Park “bio-retention” plans weren't drawn until 1/23/17, over a month after the trees were removed

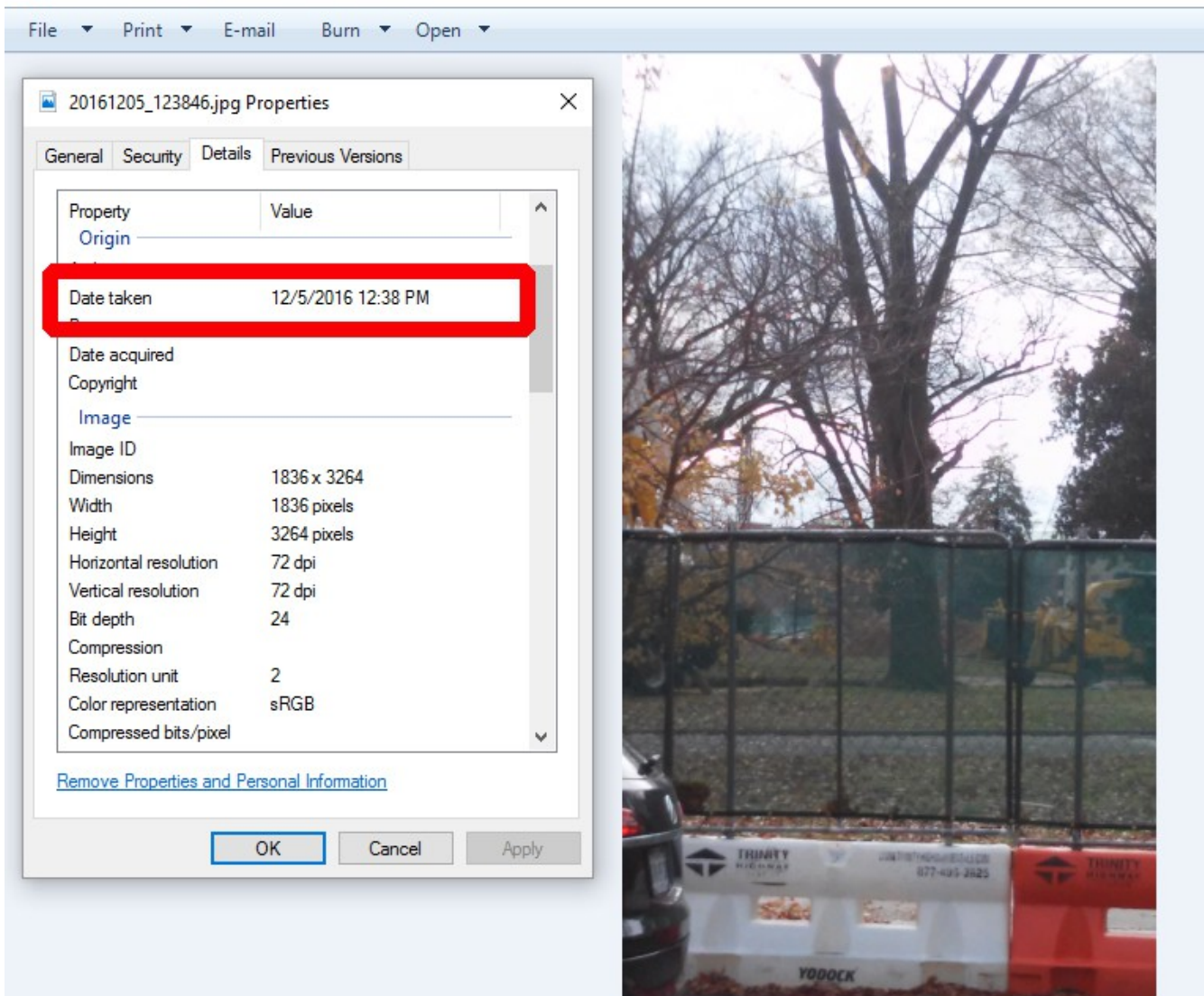


Shocked to see the healthy ginkgo tree being cut down on 12/5/16, I took a photo of the removal.



Photo of the ginkgo tree removal taken on 12/5/16, a week before the City Arborist allegedly marked it for removal as “dead”.

20161205_123846.jpg - Windows Photo Viewer



This 12/12/16 city document included the ginkgo as one of the 7 trees marked as “dead” for removal.

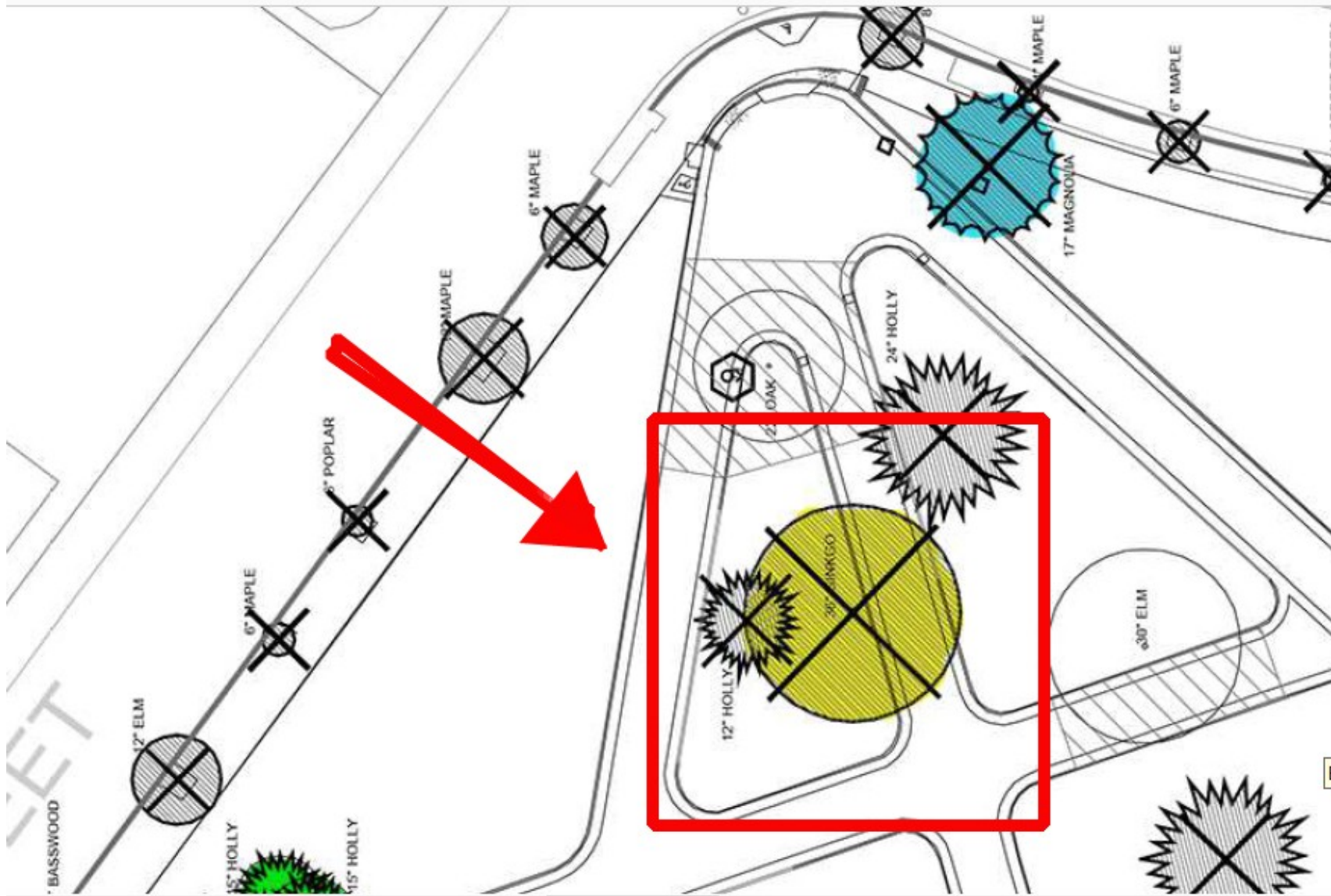


Photo of the same healthy ginkgo tree taken in late Nov. 2016 shows that the tree was not “dead”.

Source: Fans of Monroe Park Facebook page



1860 Pratt Ginkgo at U.VA: ginkgo trees rapidly lose leaves in late autumn. Ginkgo trees can live for hundreds of years. Source UVA website.

