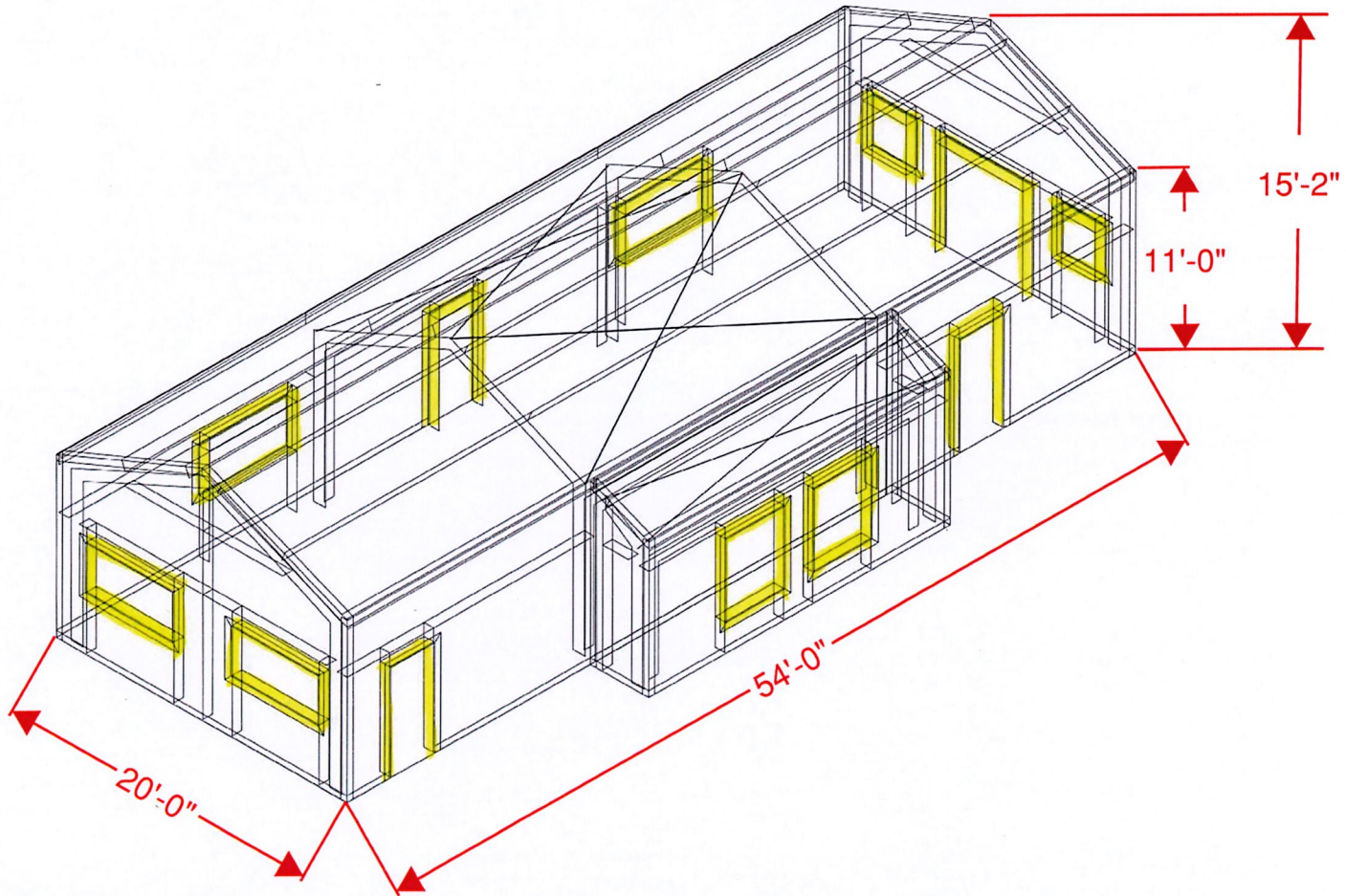


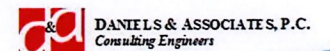
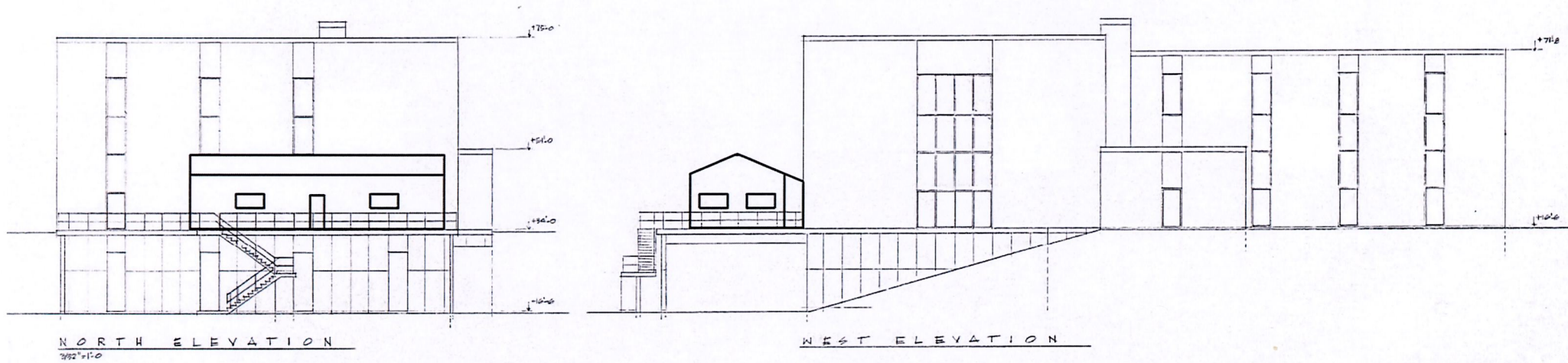
# Existing Loading Building to be Replaced



# Axonometric View of New Loading Building from Southwest - Conceptual

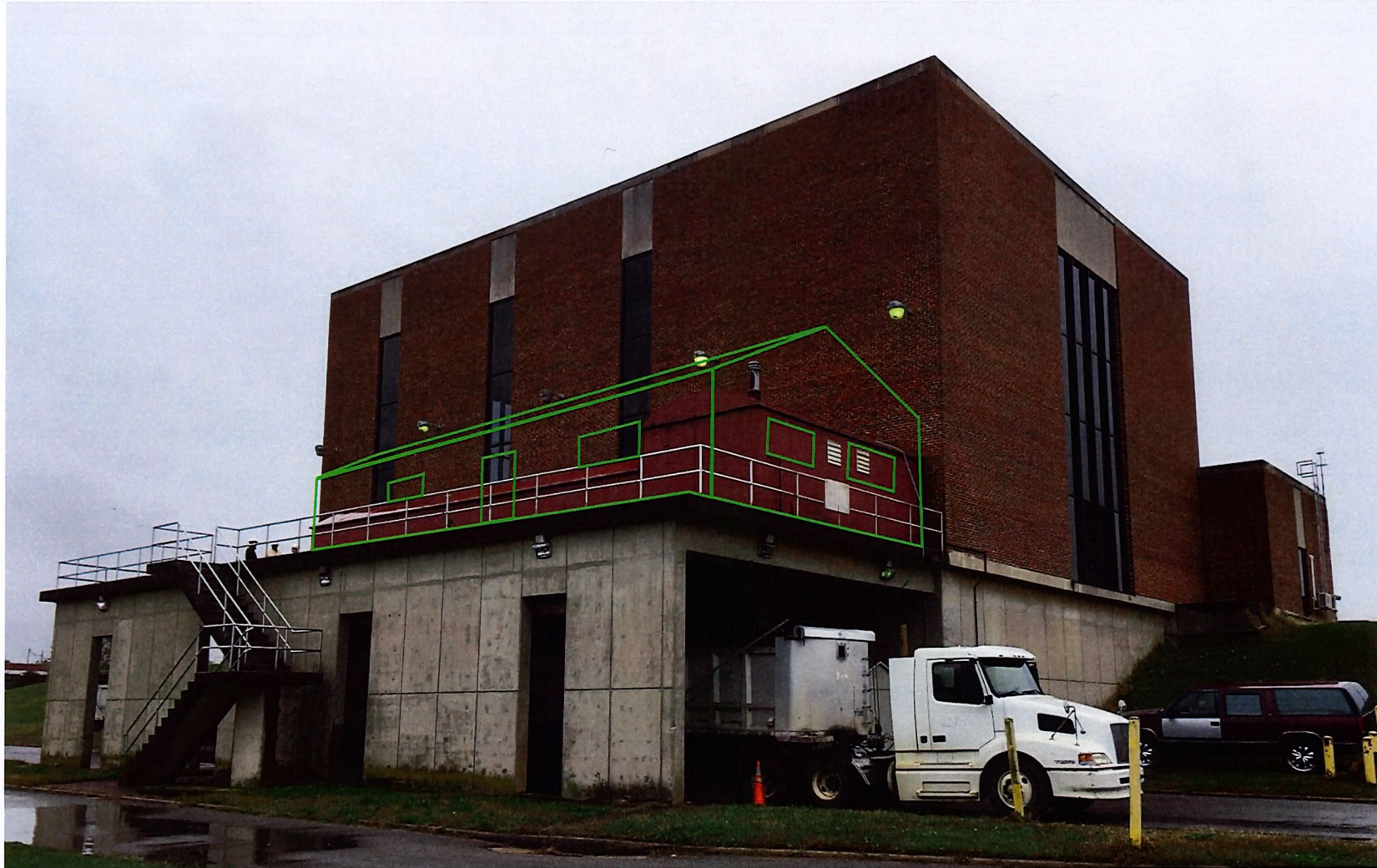


# New Loading Building Elevations





# New Loading Building

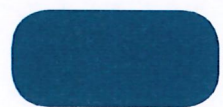




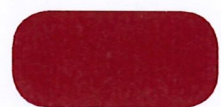
**HERITAGE**  
**BUILDING SYSTEMS.**  
*Established 1979*

# SIGNATURE® 200 COLORS

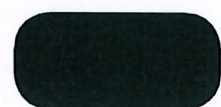
SILICONIZED POLYESTER



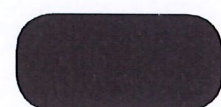
HAWAIIAN BLUE



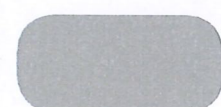
CRIMSON RED



FERN GREEN

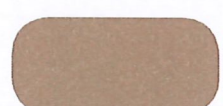


CHARCOAL GRAY

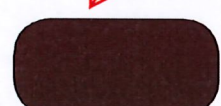


ASH GRAY

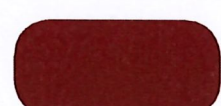
LOADING BUILDING  
 COLOR



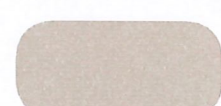
SADDLE TAN



KOKO BROWN



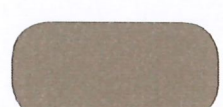
RUSTIC RED



LIGHT STONE



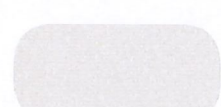
BURNISHED SLATE



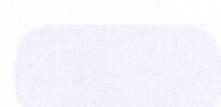
DESERT SAND



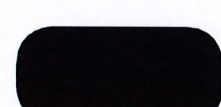
COBALT BLUE



POLAR WHITE



SOLAR WHITE



COAL BLACK

- Final color selection should be made from actual color chips.
- Trim available in all colors.
- Please speak to a representative for the most current warranty information.
- All colors are available in 26-gauge material. Please consult a representative with requests for other gauges.

Signature® is a registered trademark of NCI Group, Inc.

Descriptions and specifications contained herein were in effect at the time this publication was approved for printing. In a continuing effort to refine and improve products, Heritage Building Systems reserves the right to discontinue products at any time or change specifications and/or designs without incurring obligation. To ensure you have the latest information available, please inquire or visit our website.

© Copyright NCI Group, Inc. 2017. All Rights Reserved.

Call **800.643.5555** with questions.



[www.heritagebuildings.com](http://www.heritagebuildings.com)  
 An NCI Building Systems company | Listed on the NYSE as NCS

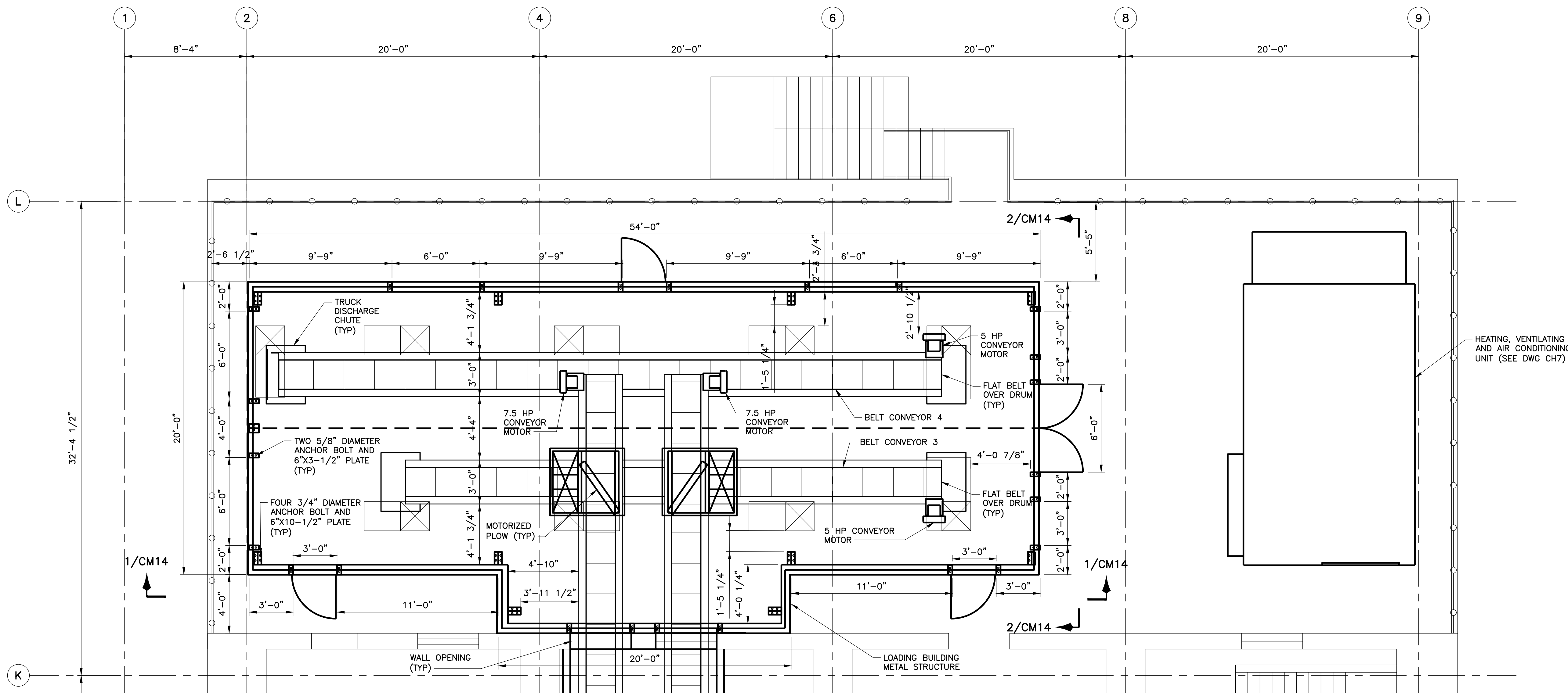
**STEEL BUILDINGS, BUILT TO LAST**



Rev. 01-17

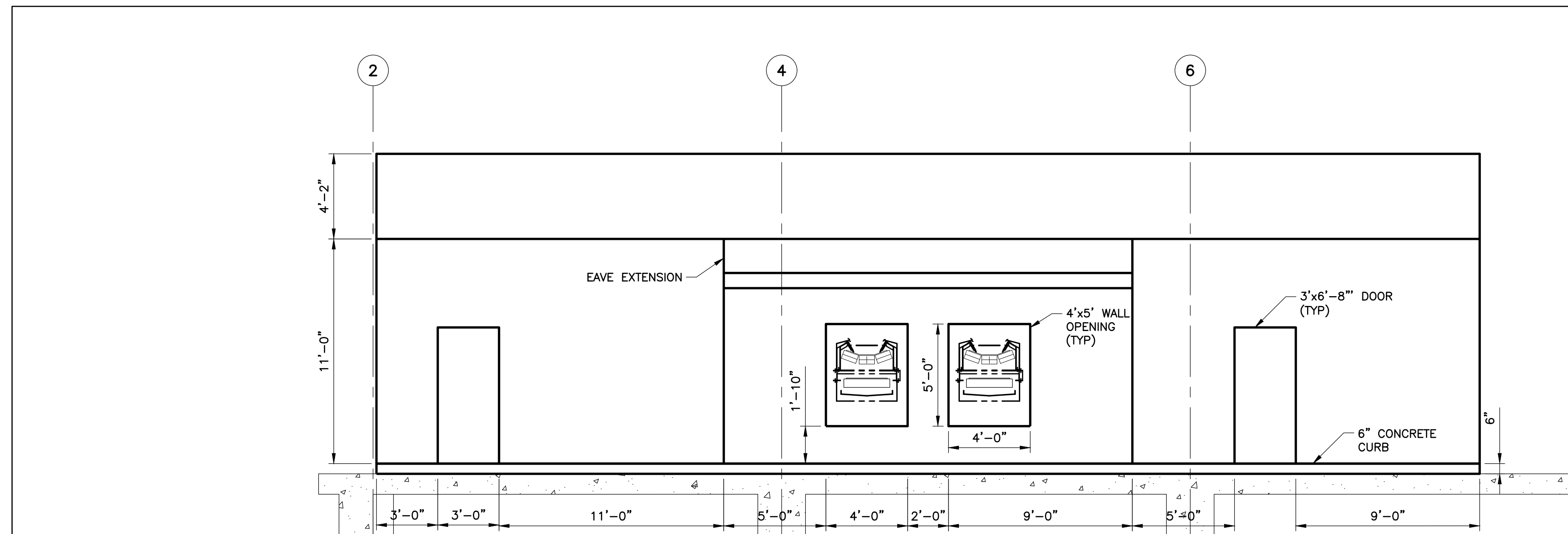
2019/06/14 12:06 PM CIVIL SIZE SHEET

S:\0219\_RICHMOND\W\W\ENG SERVICES\02188BG-039 DEWATERING CENT DESIGN\21\_CADD\21\_05 WORKING DWGS\RC39-CM14 YONTS, PHILIP

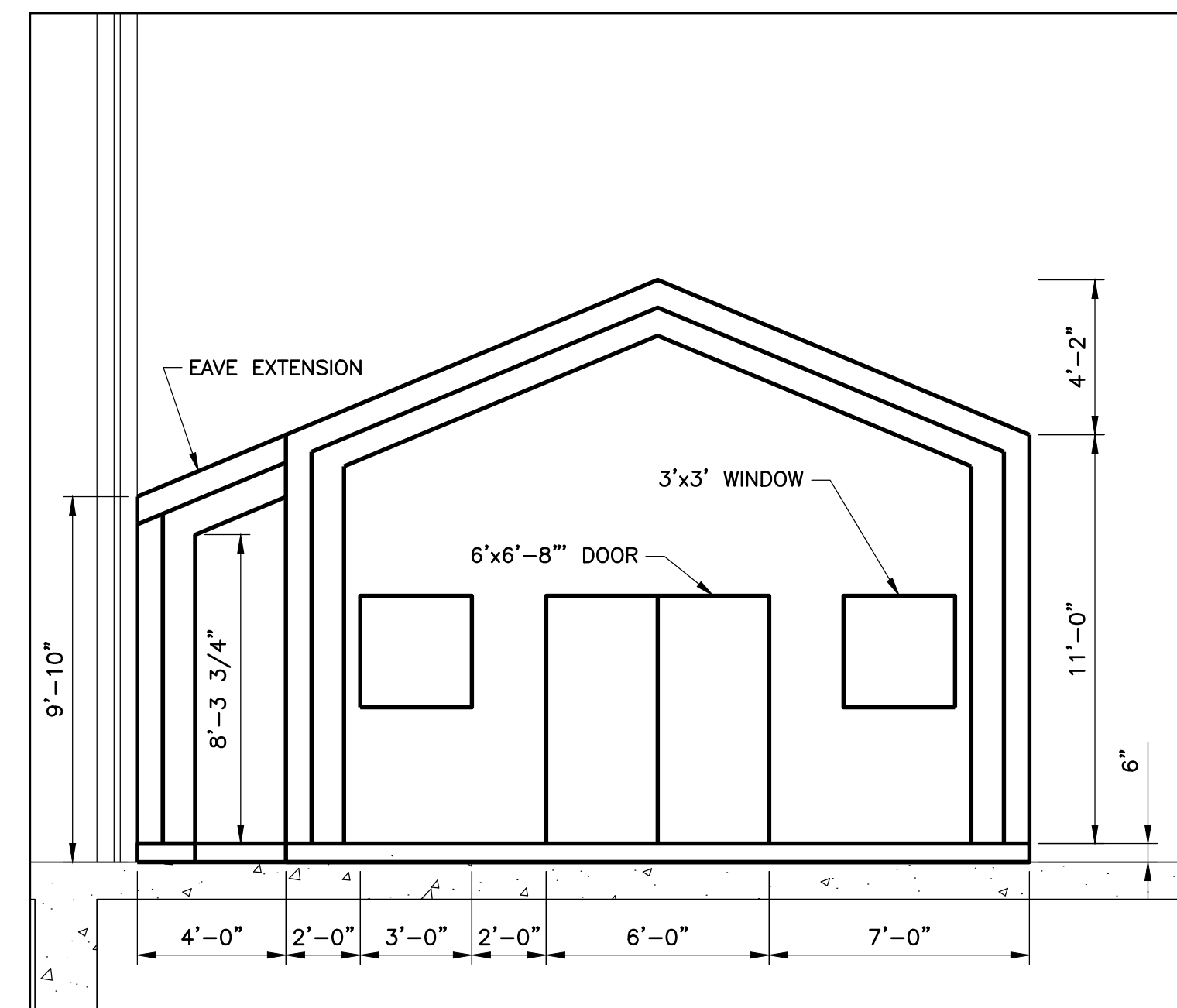


SEE DWG CM13 FOR CONTINUATION

**PLAN AT EL 34'-0"**  
SCALE: 1/4" = 1'-0"



**SECTION 1/CM14**  
SCALE: 1/4" = 1'-0"



**SECTION 2/CM14**  
SCALE: 1/4" = 1'-0"

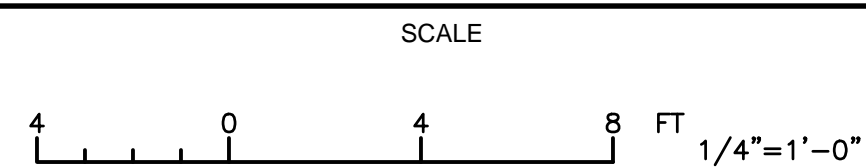
**EC** Environ-Civil Engineering, Ltd.  
Engineers • Scientists • Construction Managers  
501 East Franklin Street, Suite 527 Richmond, VA 23219

**GREELEY AND HANSEN**  
9020 STONY POINT PARKWAY, SUITE 475  
RICHMOND, VIRGINIA 23235

DESIGNED BVB  
DRAWN SK  
CHECKED GLG

APPROVED

NO.	DATE	APPD	DESCRIPTION



CITY OF RICHMOND, VIRGINIA  
DEPARTMENT OF PUBLIC UTILITIES  
WASTEWATER TREATMENT PLANT  
DIVISION 48 SLUDGE THICKENING AND  
DEWATERING FACILITY IMPROVEMENTS



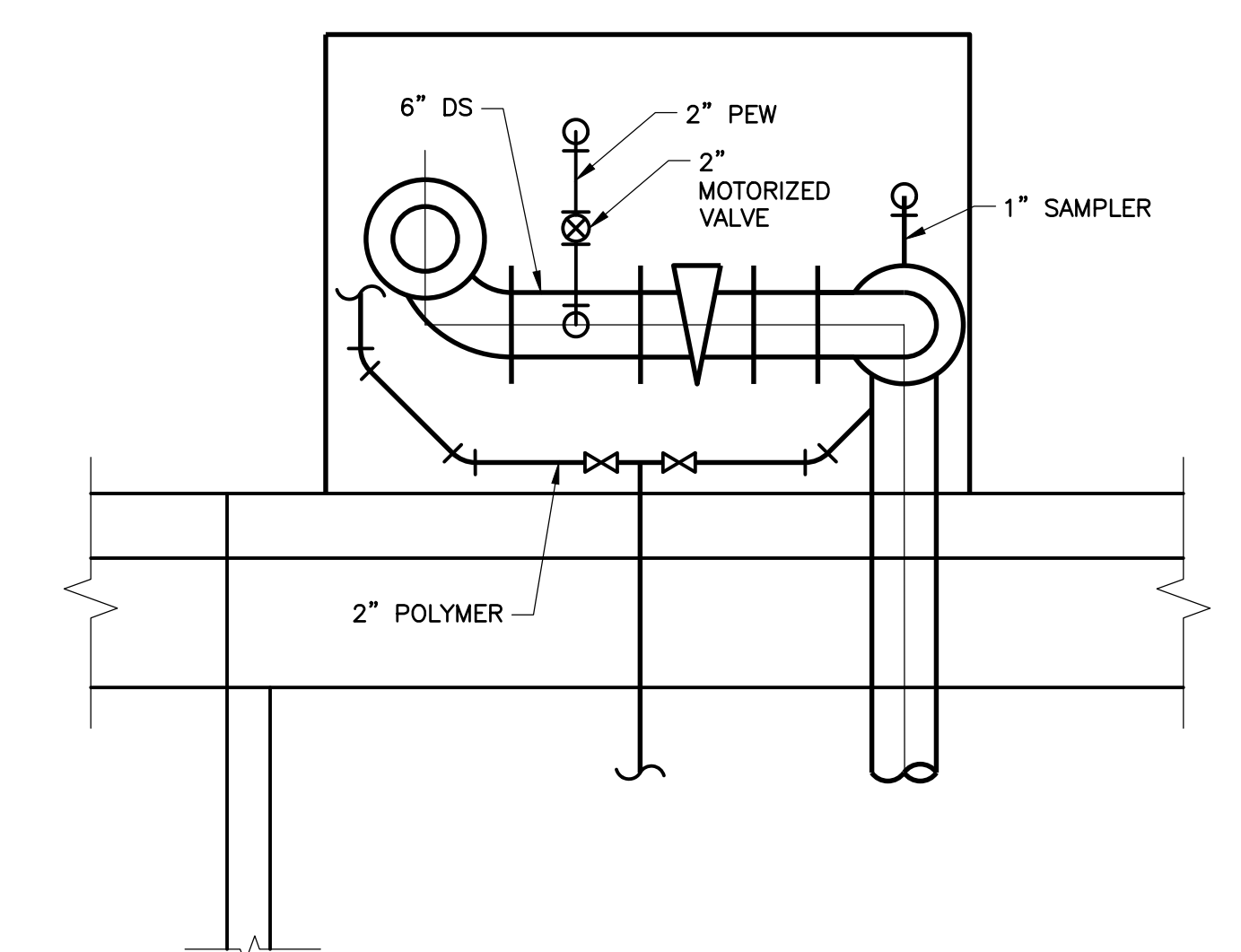
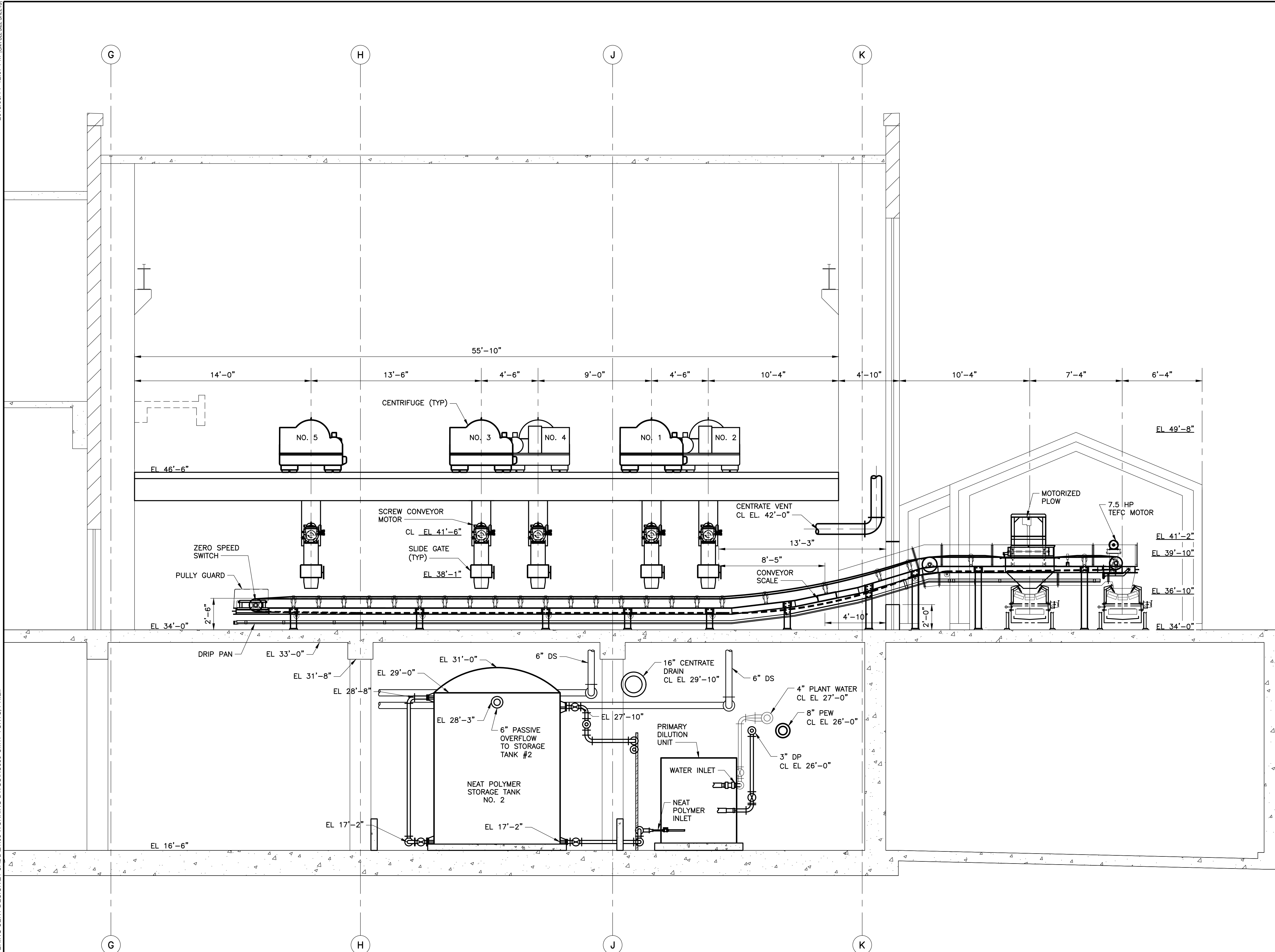
SLUDGE DEWATERING BUILDING  
MECHANICAL  
NEW LOADING BUILDING AND CONVEYORS PLAN AT FL EL  
34'-0"

**PRELIMINARY 90%**  
JUNE 2019

PROJECT NO. 02188-BG039	DWG <b>CM14</b>
SHEET 142	OF XX
DATE JULY 2019	REV 0

2019/06/14 12:07 PM  
DWG SIZE SHEET

S:\0219\_RICHMOND\WWT\ENG SERVICES\021988BG-039 DEWATERING CENT DESIGN\21 CAD\021.05 WORKING DWG\SRCS39-CM17 YONTS, PHILIP



**SECTION 3/CM15**  
SCALE: 3/4" = 1'-0"

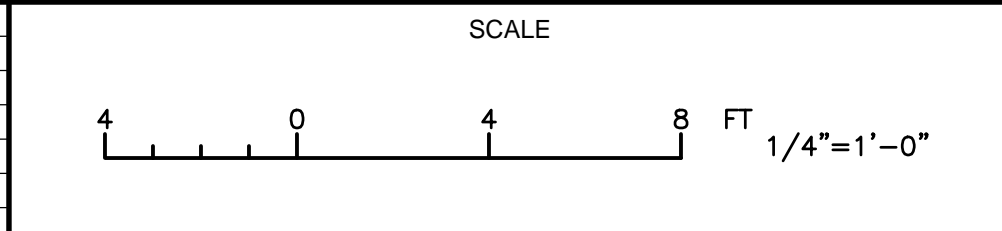
**SECTION 2/CM10, CM11, CM13, CM15**  
SCALE: 1/4" = 1'-0"

**EC** Environ-Civil Engineering, Ltd.  
Engineers • Scientists • Construction Managers  
501 East Franklin Street, Suite 527 Richmond, VA 23219

**GREELEY AND HANSEN**  
9020 STONY POINT PARKWAY, SUITE 475  
RICHMOND, VIRGINIA 23235

DESIGNED BVB	APPROVED
DRAWN PMY	
CHECKED GLG	

NO.	DATE	APPD	DESCRIPTION



CITY OF RICHMOND, VIRGINIA  
DEPARTMENT OF PUBLIC UTILITIES  
WASTEWATER TREATMENT PLANT  
DIVISION 48 SLUDGE THICKENING AND  
DEWATERING FACILITY IMPROVEMENTS



SLUDGE DEWATERING BUILDING  
MECHANICAL  
NEW SECTION

**PRELIMINARY 90%**  
JUNE 2019

PROJECT NO. 02188-BG039
DWG <b>CM17</b>
SHEET 152 OF XX
DATE JULY 2019 REV 0