



Commission of Architectural Review SUBMISSION APPLICATION

City of Richmond, Room 510 – City Hall
900 East Broad Street, Richmond, Virginia 23219
PHONE: (804) 646-6335 FAX: (804) 646-5789

12 COPIES OF SUPPORTING DOCUMENTATION ARE REQUIRED FOR PROCESSING YOUR SUBMISSION

LOCATION OF WORK: 2411 M Street DATE: Nov 18, 2016

OWNER'S NAME: 2411 M St, LLC TEL NO.: 804-991-4111

AND ADDRESS: 611 N 26th St EMAIL: dvk5f@yahoo.com

CITY, STATE AND ZIPCODE: Richmond, VA 23223

ARCHITECT/CONTRACTOR'S NAME: ADO TEL. NO.: 804-343-1212

AND ADDRESS: 105 E Broad St EMAIL: todd@ado.design

CITY, STATE AND ZIPCODE: Richmond, VA 23219

Would you like to receive your staff report via email? Yes No

REQUEST FOR CONCEPTUAL REVIEW

I hereby request Conceptual Review under the provisions of Chapter 114, Article IX, Division 4, Section 114-930.6(d) of the Richmond City Code for the proposal outlined below in accordance with materials accompanying this application. I understand that conceptual review is advisory only.

APPLICATION FOR CERTIFICATE OF APPROPRIATENESS

I hereby make application for the issuance of a certificate under the provisions of Chapter 114, Article IX, Division 4 (Old and Historic Districts) of the Richmond City Code for the proposal outlined below in accordance with plans and specifications accompanying this application.

DETAILED DESCRIPTION OF PROPOSED WORK (Required):

STATE HOW THE DESIGN REVIEW GUIDELINES INFORM THE DESIGN OF THE WORK

PROPOSED. (Include additional sheets of description if necessary, and 12 copies of artwork helpful in describing the project. The 12 copies are not required if the project is being reviewed for an administrative approval. See instruction sheet for requirements.)

This proposal for certificate review is for proposed in-fill construction at the vacant parcels that comprise the majority of their block and front on Jefferson Ave, M Street and 24th Street in the Union Hill National and City Historic District. The description of the proposal in reference to the Design Guidelines Standards for New Commercial Construction is included in the attached application materials.

Signature of Owner or Authorized Agent: x 

Name of Owner or Authorized Agent (please print legibly): Mr. Todd Dykshorn, architect

(Space below for staff use only)

Received by Commission Secretary ECE YED

DATE NOV 18 2016

4:42 pm

APPLICATION NO. _____

SCHEDULED FOR _____

Note: CAR reviews all applications on a case-by-case basis.

Project Description

[This submittal requesting Certificate of Appropriateness review of a proposed infill structure in the Union Hill National and City Historic District accompanies a separate but associated and previously approved application for demolition of the non-historic and non-contributing 1-story structure at 2416 Jefferson Ave. The structure described in this application is intended to replace the non-historic structure which is under the same ownership. The project in totality encompasses the majority of the triangular block and comprises a significant redevelopment of urban street wall at this vital location.]

The project outlined in this application is a new 3-story mixed-use building with an enclosed roof-top amenity room and terraces. Programming for the building follows typical urban models. The 1st/ street level is to be occupied by commercial retail or office spaces configured with enclosed parking and service area accessed on the M Street elevation. Levels 2 and 3 feature 1 and 2-bedroom residential apartments outlining a core of amenity and meeting spaces available to both commercial and residential occupants. The roof level room occupies a small percentage, approximately 3000 square feet compared to the structure's approximate 16,000 square feet per level and is setback a significant distance from the roof edges to minimize its visibility and impact, particularly as perceived from the residential areas surrounding the corner at 24th and M Streets. Due primarily to the requested height of the proposal, the project outlined requires Special Use Zoning approval.



Contents

page 1	[current] Project Description, Aerial View of Model, and Table of Application Contents
page 2	Primary Concepts and Site Plan
page 3-6	Floor Plans and Circulation
page 7-9	Material Building Elevations
page 10	Material and Color Index
page 11	Neighboring Building Context Heights
page 12	Building Profile and Materials Swatches
page 13	Aerial View
page 14	Aerial View
page 15	View of Proposed Structure - from rotary at Jefferson Ave, 25th and M Streets
page 16	View of Proposed Structure - from corner of Jefferson Ave and 24th Street
page 17	View of Proposed Structure - from corner of 24th and M Streets

Primary Concepts informing the structure relative to the Design Guidelines Standards for New Commercial Construction

Siting

The structure will enhance the historic district by reinstating its prominent Jefferson Ave perimeter and re-establishing the 24th and M Street corner. Due to the project's surrounding urban context and the unique property configuration, the building as conceived occupies the entire site, establishing contextual street wall on each of its three major sides. Sitting at the prominent intersection of Jefferson Ave, 25th Street and M Street, the property has differing personalities and the opportunity to create a frontispiece and gateway to the historic district along Jefferson Ave as well as an intrinsic community corner at the intersection of 24th and M Streets. In response to the prominent corner at Jefferson, 25th and M St, the building is held back in order to create an open, sidewalk-level terrace with entries to the commercial retail or office spaces at this level. At the corner of 24th and M Streets, the building adjusts its mass to accentuate and address the corner and the Union Hill community with the appropriate scale of non-residential structures that dot the historic district, creating nodes of orientation and amenity for community residents.

Form

The conceptual intent of the building's massing is to allow for greater utilization of the site with one additional story and an occupied roof while maintaining compatibility with the surrounding historic context. With the request for additional height, the structure's massing strategy acknowledges the surrounding predominantly 2-story context by stepping the third level in approximately 5 feet and the roof-top room a minimum of an additional 15 feet. This section informs the building on all street-fronts with the exception of the corner of 24th and M Streets, where it is proposed to extend the street wall to the 3rd level. This additional mass at the corner, for reasons exemplified in R-63 zoning districts, is intended to anchor the corner and identify the new structure with other commercial, institutional, and religious structures throughout the district.

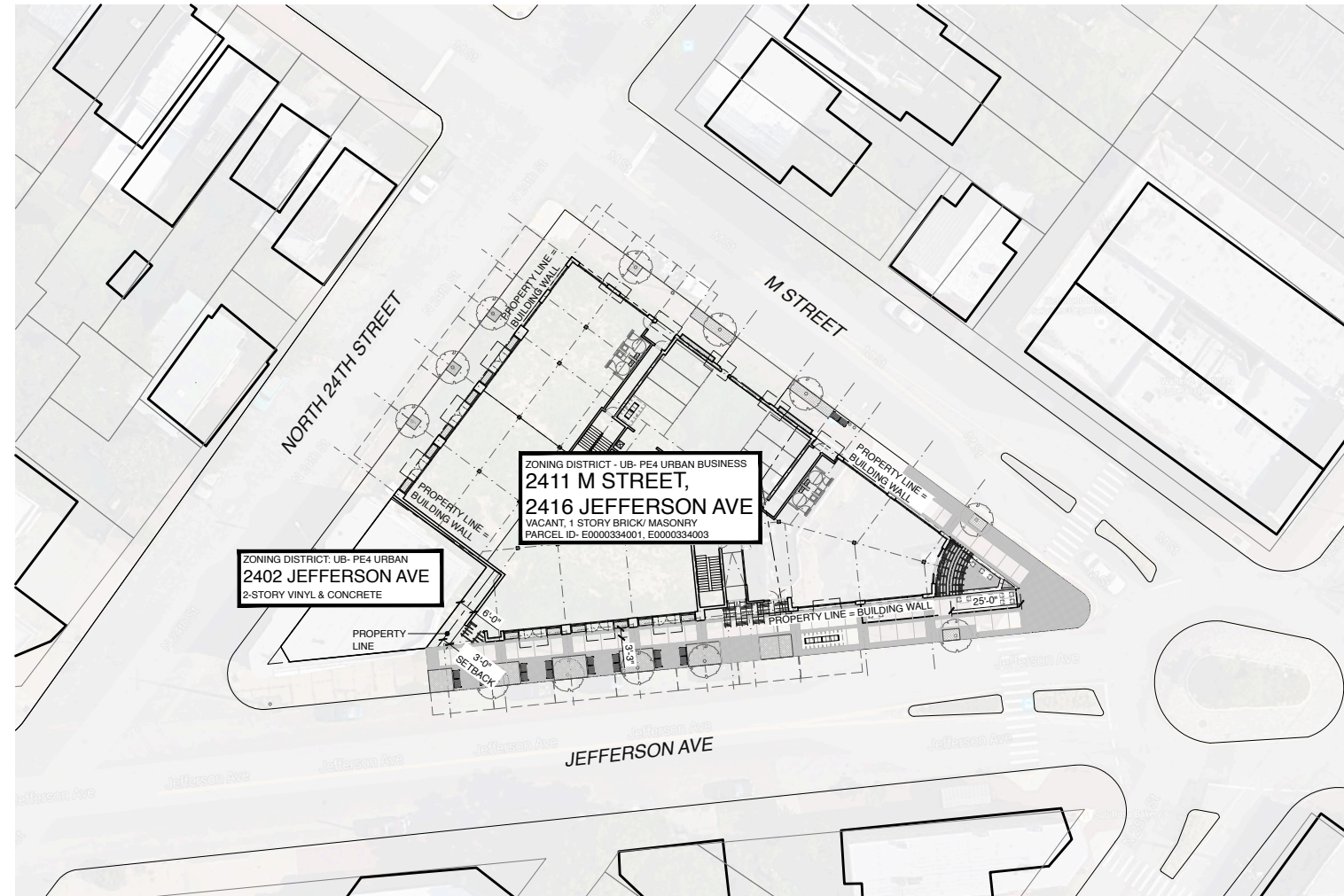
Height, Width, Proportion and Massing

As described above, the building's elevations are characterized by 2-story height walls on all sides excepting at the corner of 24th and M Streets. The predominant 2-story walls are suggested to be articulated by a bay spacing of 18-24 feet represented by wide brick piers framing large openings at the 1st/sidewalk level and that continue as raised pilasters in the 2nd-story. The 2nd-story wall set between these pilasters is brick panel interrupted by both recessed open balconies and large windows which are, in turn, anchored within the panels by horizontal bands of recessed brick. Additionally, the primary bays on the longer Jefferson Ave and M St facades are separated by recessed sections that group a maximum of 3 bays. These groups further reduce the length and horizontality of the street wall while creating obvious points of entry, and interest in the street level building wall.

Primary Concepts informing the structure relative to the Design Guidelines Standards for New Commercial Construction

Materials and Colors

Materials and colors, working within the proportional bays and groupings described, are intended to reference the historic setting while being clearly discernable from older structures. The predominant exterior material characterizing 2-story walls is brick masonry interrupted by glass storefront and windows and panelized by metallic canopies, upper level balcony rails and miscellaneous decorative features. The recessed 3rd level wall material is conceived to be a smooth-surfaced panel with paint finish although materials at this level have not been thoroughly determined. The roof-top enclosure is conceived as a glass-walled room opening



on the majority of its sides toward views in all directions. Parapets at the 3rd level are conceived to extend to a height that shields roof-top mounted equipment and the roof-top room would have corresponding solid panels at these areas of roof-top equipment.

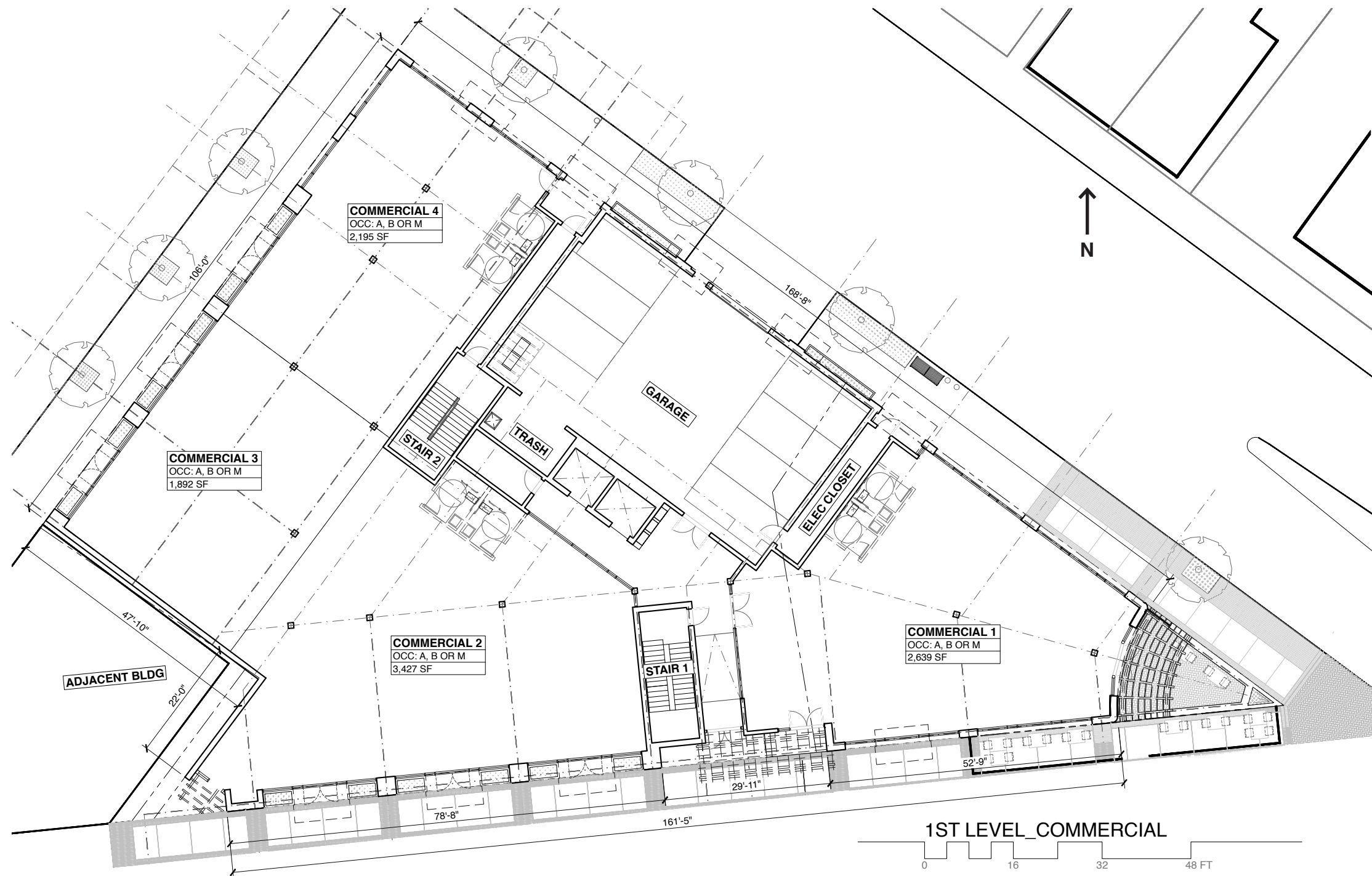
The brick field color is to be determined but is being conceptualized as a slightly gray/red tone that blends with the traditional reds found throughout the district while also distinguishing the structure as contemporary within the context. To achieve large expanses of glass, window framing is likely to be aluminum and will be selected in darker colors that complement the surrounding brick and metallic components.

Storefront Facades

Intrinsic to the character of the building at the 1st/sidewalk level are large expanses of storefront windows and entries. The building's programming is reinforced by this level's openness and connection to its surrounding context. As described above, expansive glass and entry openings are framed by wide brick piers and decorative lintels that are thought to be either recessed brick soldiering or exposed steel. Storefront panels that are horizontal in overall proportion are suggested to incorporate framing members that produce vertically oriented light divisions within the panels and relate to door opening widths and other features scaled to pedestrian activity on the sidewalk.

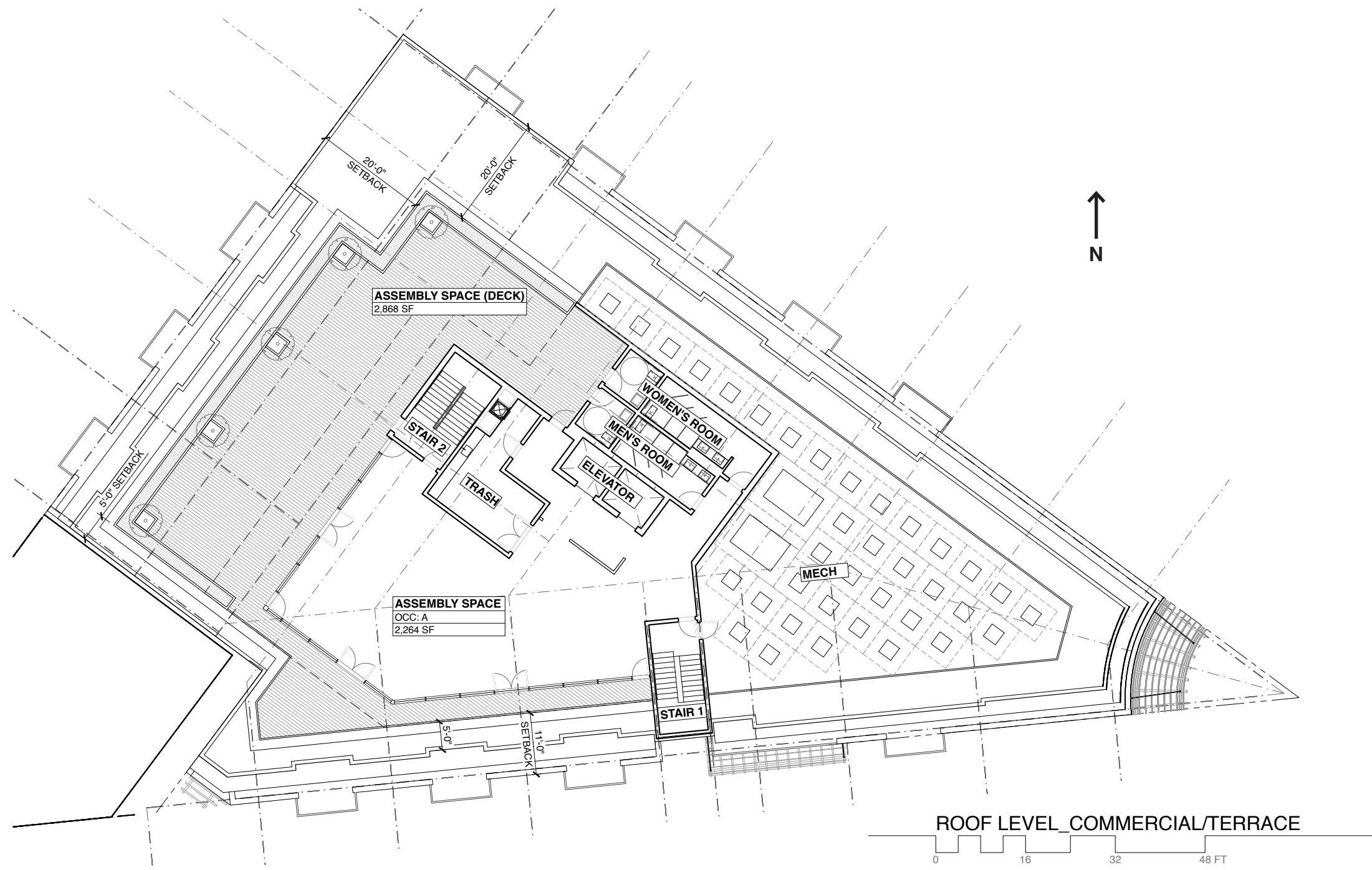
Doors and Windows

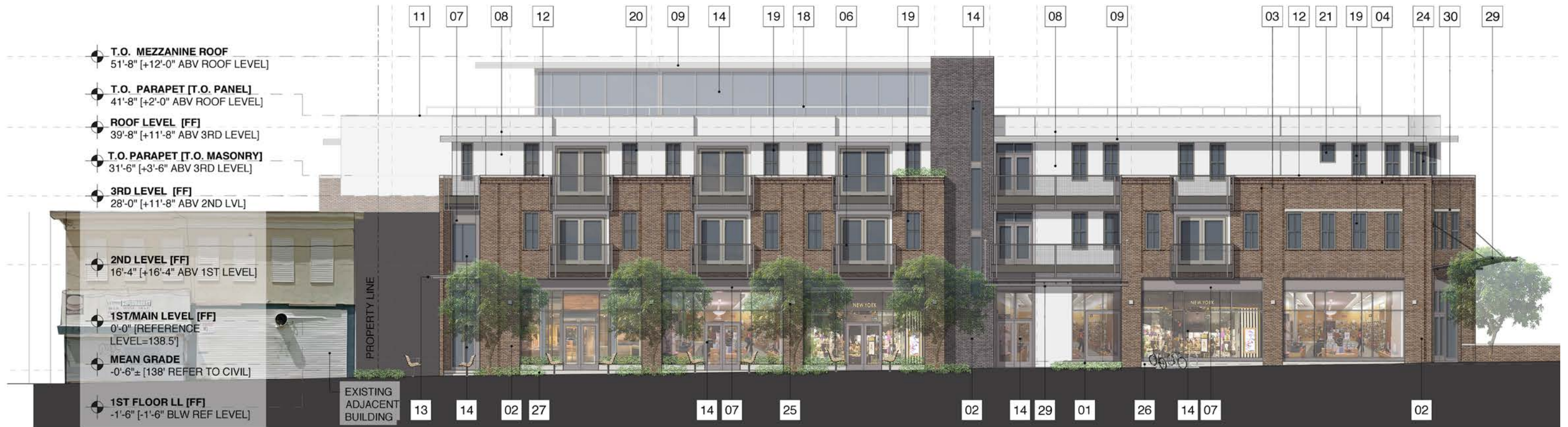
Doors are predominantly three types, public and tenant entry on the 1st level, balcony doors on the 2nd and recessed 3rd levels, and terrace access doors on the rooftop level. 1st level and rooftop doors are anticipated to be full-light glass and incorporated into storefront framing. Roof top level doors, along with the roof top enclosure in general, is intended to be set back and inconspicuous. Private resident balcony doors are anticipated to be full-light wood or composite doors with paint finish. Windows on upper levels, as shown in the attached views and elevations are predominantly large double-hung types set into masonry or paneled wall. In some areas, two double hung windows are proposed to be mullied together in a larger masonry opening. Where this occurs, a strong dividing vertical will be incorporated to maintain each window's vertical proportion. Balconies feature large expanses of glass recessed from the primary wall planes. It is not yet determined if these glass areas will be best created using a storefront type system or composite window assemblies. It is expected that balcony doors and windows will match in appearance and finish.











SOUTH/JEFFERSON ST ELEVATION



MATERIAL KEYNOTES

01 **033000 - STR** CONCRETE STEP

02 **042613 - BRK1** BRICK VENEER, COLOR: TBD, RUNNING BOND

03 **042613 - BRK1** BRICK VENEER, COLOR: TBD, RECESSED 1", RUNNING BOND

04 **042613 - BRK1** BRICK SOLDIER COURSE, COLOR: TBD

05 FRAMED OPENING

06 **055213 - WM1** WIRE MESH & TUBE RAILING, SHOP PRIMED AND FIELD PAINTED, COLOR TBD. TYPICAL AT BALCONIES.

07 SPANDREL PANEL

08 **074646 - PNL1** FIBER-CEMENT PANEL - PAINT FINISH W/ **074456 - FCP ACCESSORIES**, REFER TO ELEVATIONS AND DETAILS FOR PATTERN AND REVEAL TRIMS.

09 CLEAR ANONDIZED ALUMINUM CLADDED CANOPY

10 **074646 - LAP1** FIBER CEMENT HORIZONTAL LAP SIDING, W/ **074456 - FCP ACCESSORIES**, REFER TO ELEVATIONS AND DETAILS FOR PATTERN AND REVEAL TRIMS.

11 **076200 - FL1** PREFINISHED METAL PARAPET CAP WITH DRIP EDGE

12 CONCRETE SILL CAP

13 PAINTED METAL FRAMED CANOPY

14 **084113 - ALUMINUM STOREFRONTS** BRAKE METAL CLOSURE PANEL, COLOR TO MATCH ADJACENT STOREFRONT

15 ALUMINUM OVERHEAD DOOR WITH FROSTED GLASS PANELS, BOTTOM TWO ROWS TO BE METAL PANEL

16 **084113 - ALUMINUM STOREFRONTS** BRAKE METAL CLOSURE PANEL, COLOR TO MATCH ADJACENT STOREFRONT - FROSTED GLASS

17 **089119 - ML** PRE-FINISHED METAL LOUVERS IN ALUMINUM FRAME

18 **055213 - RL** PIPE AND TUBE RAILING, SHOP PRIMED AND FIELD PAINTED, COLOR TBD

19 1 OVER 1 DOUBLE HUNG WINDOW

20 (2) 1 OVER 1 DOUBLE HUNG GANGED WINDOW

21 CASEMENT WINDOW

22 EXTERIOR HOLLOW METAL DOOR WITH VIEW LITE

23 EXTERIOR 8'-0" PRE-FINISHED ALUMINUM CLAD WOOD SLIDING DOOR

24 EXTERIOR 6'-0" PRE-FINISHED ALUMINUM CLAD WOOD SLIDING DOOR

25 EXTERIOR LIGHT FIXTURE

26 PARGED CMU WALL

27 CONCRETE PLANTER

28 EXISTING/ NEW TREE, REFER TO SITE PLAN **01/A100**

29 SUSPENDED CANOPY WITH CLEAR ANONDIZED METAL AND WOOD FRAMING

30 CONCRETE LINTEL

31 DASHED LINE INDICATES ROOFTOP MECHANICAL UNITS BEYOND. NOT VISIBLE FROM PUBLIC VIEW



NORTH/M ST ELEVATION

1/16" = 1'-0" 0 16 32 48 FT

MATERIAL KEYNOTES

01 **033000 - STR** CONCRETE STEP

02 **042613 - BRK1** BRICK VENEER, COLOR: TBD, RUNNING BOND

03 **042613 - BRK1** BRICK VENEER, COLOR: TBD. RECESSED 1", RUNNING BOND

04 **042613 - BRK1** BRICK SOLDIER COURSE, COLOR: TBD

05 FRAMED OPENING

06 **055213 - WM1** WIRE MESH & TUBE RAILING, SHOP PRIMED AND FIELD PAINTED, COLOR TBD. TYPICAL AT BALCONIES.

07 SPANDREL PANEL

08 **074646 - PNL1** FIBER-CEMENT PANEL - PAINT FINISH W/ **074456 - FCP ACCESSORIES**, REFER TO ELEVATIONS AND DETAILS FOR PATTERN AND REVEAL TRIMS.

09 CLEAR ANONDIZED ALUMINUM CLADDED CANOPY

10 **074646 - LAP1** FIBER CEMENT HORIZONTAL LAP SIDING, W/ **074456 - FCP ACCESSORIES**, REFER TO ELEVATIONS AND DETAILS FOR PATTERN AND REVEAL TRIMS.

11 **076200 - FL1** PREFINISHED METAL PARAPET CAP WITH DRIP EDGE

12 CONCRETE SILL CAP

13 PAINTED METAL FRAMED CANOPY

14 **084113 - ALUMINUM STOREFRONTS** BRAKE METAL CLOSURE PANEL, COLOR TO MATCH ADJACENT STOREFRONT

15 ALUMINUM OVERHEAD DOOR WITH FROSTED GLASS PANELS, BOTTOM TWO ROWS TO BE METAL PANEL

16 **084113 - ALUMINUM STOREFRONTS** BRAKE METAL CLOSURE PANEL, COLOR TO MATCH ADJACENT STOREFRONT - FROSTED GLASS

17 **089119 - ML** PRE-FINISHED METAL LOUVERS IN ALUMINUM FRAME

18 **055213 - RL** PIPE AND TUBE RAILING, SHOP PRIMED AND FIELD PAINTED, COLOR TBD

19 1 OVER 1 DOUBLE HUNG WINDOW

20 (2) 1 OVER 1 DOUBLE HUNG GANGED WINDOW

21 CASEMENT WINDOW

22 EXTERIOR HOLLOW METAL DOOR WITH VIEW LITE

23 EXTERIOR 8'-0" PRE-FINISHED ALUMINUM CLAD WOOD SLIDING DOOR

24 EXTERIOR 6'-0" PRE-FINISHED ALUMINUM CLAD WOOD SLIDING DOOR

25 EXTERIOR LIGHT FIXTURE

26 PARGED CMU WALL

27 CONCRETE PLANTER

28 EXISTING/ NEW TREE, REFER TO SITE PLAN **01/A100**

29 SUSPENDED CANOPY WITH CLEAR ANONDIZED METAL AND WOOD FRAMING

30 CONCRETE LINTEL

31 DASHED LINE INDICATES ROOFTOP MECHANICAL UNITS BEYOND. NOT VISIBLE FROM PUBLIC VIEW AT GRADE.



WEST/N 24TH ST ELEVATION

1/16" = 1'-0" 0 16 32 48 FT

MATERIAL KEYNOTES

01 **033000 - STR** CONCRETE STEP

02 **042613 - BRK1** BRICK VENEER, COLOR: TBD, RUNNING BOND

03 **042613 - BRK1** BRICK VENEER, COLOR: TBD. RECESSED 1", RUNNING BOND

04 **042613 - BRK1** BRICK SOLDIER COURSE, COLOR: TBD

05 FRAMED OPENING

06 **055213 - WM1** WIRE MESH & TUBE RAILING, SHOP PRIMED AND FIELD PAINTED, COLOR TBD. TYPICAL AT BALCONIES.

07 SPANDREL PANEL

08 **074646 - PNL1** FIBER-CEMENT PANEL - PAINT FINISH W/ **074456 - FCP ACCESSORIES**, REFER TO ELEVATIONS AND DETAILS FOR PATTERN AND REVEAL TRIMS.

09 CLEAR ANONDIZED ALUMINUM CLADDED CANOPY

10 **074646 - LAP1** FIBER CEMENT HORIZONTAL LAP SIDING, W/ **074456 - FCP ACCESSORIES**, REFER TO ELEVATIONS AND DETAILS FOR PATTERN AND REVEAL TRIMS.

11 **076200 - FL1** PREFINISHED METAL PARAPET CAP WITH DRIP EDGE

12 CONCRETE SILL CAP

13 PAINTED METAL FRAMED CANOPY

14 **084113 - ALUMINUM STOREFRONTS** BRAKE METAL CLOSURE PANEL, COLOR TO MATCH ADJACENT STOREFRONT

15 ALUMINUM OVERHEAD DOOR WITH FROSTED GLASS PANELS, BOTTOM TWO ROWS TO BE METAL PANEL

16 **084113 - ALUMINUM STOREFRONTS** BRAKE METAL CLOSURE PANEL, COLOR TO MATCH ADJACENT STOREFRONT - FROSTED GLASS

17 **089119 - ML** PRE-FINISHED METAL LOUVERS IN ALUMINUM FRAME

18 **055213 - RL** PIPE AND TUBE RAILING, SHOP PRIMED AND FIELD PAINTED, COLOR TBD

19 1 OVER 1 DOUBLE HUNG WINDOW

20 (2) 1 OVER 1 DOUBLE HUNG GANGED WINDOW

21 CASEMENT WINDOW

22 EXTERIOR HOLLOW METAL DOOR WITH VIEW LITE

23 EXTERIOR 8'-0" PRE-FINISHED ALUMINUM CLAD WOOD SLIDING DOOR

24 EXTERIOR 6'-0" PRE-FINISHED ALUMINUM CLAD WOOD SLIDING DOOR

25 EXTERIOR LIGHT FIXTURE

26 PARGED CMU WALL

27 CONCRETE PLANTER

28 EXISTING/ NEW TREE, REFER TO SITE PLAN **01/A100**

29 SUSPENDED CANOPY WITH CLEAR ANONDIZED METAL AND WOOD FRAMING

30 CONCRETE LINTEL

31 DASHED LINE INDICATES ROOFTOP MECHANICAL UNITS BEYOND. NOT VISIBLE FROM PUBLIC VIEW AT GRADE.



Exterior Materials

1/ PRIMARY EXTERIOR WALL MATERIALS:

The primary facade material proposed to be is brick set in a running bond pattern and featuring soldier courses, recessed reveal, and row lock detailing. Recessed balcony alcoves and the majority of the 3rd level are proposed to be clad in painted cementitious paneling. The 4th/roof deck room is composed nearly equally in storefront glass and painted cementitious paneling.

2/ MAJOR FEATURE - STOREFRONT:

The street level facade and street wall is proposed to be principally composed of aluminum storefront and glazing. The storefront enters the commercial spaces present on M Street, 24th Street, and Jefferson Ave frontages.

3/ MAJOR FEATURE - BALCONIES:

On the upper levels of the building, apartments are proposed to feature balconies with 2x2" wire mesh and aluminum railing and painted wood frame doors with full lite doors. In elevation, these balconies center on the street level storefronts and entries.

4/ MAJOR FEATURE - BRICK STAIRWELL:

The building is proposed to feature a prominent brick stairwell tower in the approximate center of the Jefferson Ave frontage.

5/ WINDOWS:

Windows are proposed to be fiberglass framed 2-over-2 double hung in configurations shown in the building elevations.

6/ EXTERIOR DOORS:

Exterior doors are proposed to be aluminum storefront assemblies congruent with the main street level storefront, entering both commercial and residential areas. Doors are proposed in configurations shown in the elevations, with full lite doors and transom above.

7/ SITE FEATURES:

The corner of the building at M St and Jefferson Ave is proposed to feature a sidewalk plaza adjacent to the building entry. The building's internal vehical parking area is accessed off M Street at roughly the center of the block. All street level walls feature building entries and/ or optional building entries for office, retail, or other commercial occupancies.

Color Index

All paint colors are coordinated with approved swatches outlined in Design Review Guidelines. Materials noted are intended to be examples for coloration, texture and other qualities and to be confirmed as directed by the CAR for approval of actual type of submitted substitute.

BRICK
TBD with CAR Administrative Approval

BRICK PARAPET COPING
Precast Concrete In Color TBD

FIBER CEMENT PANNELING
HardiePanel Prefinished Arctic White

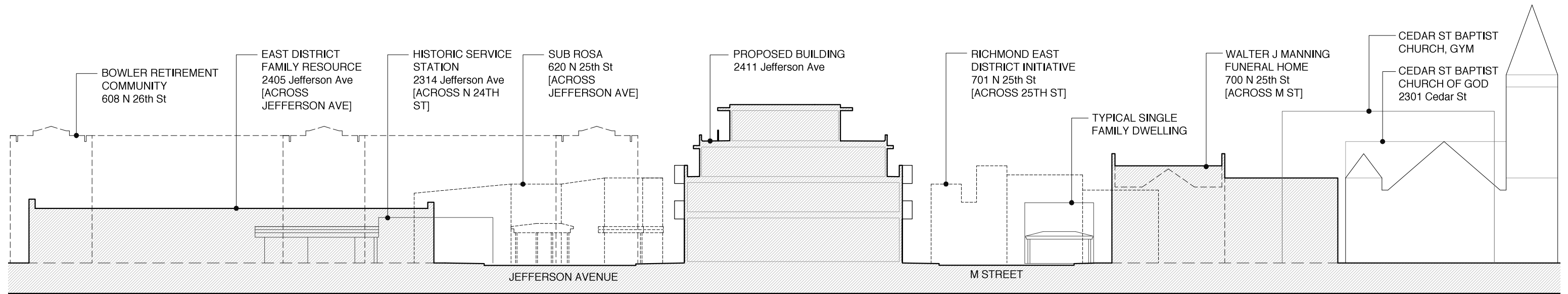
STOREFRONT FRAMING AND SPANDREL
Prefinished Clear Anodized Aluminum

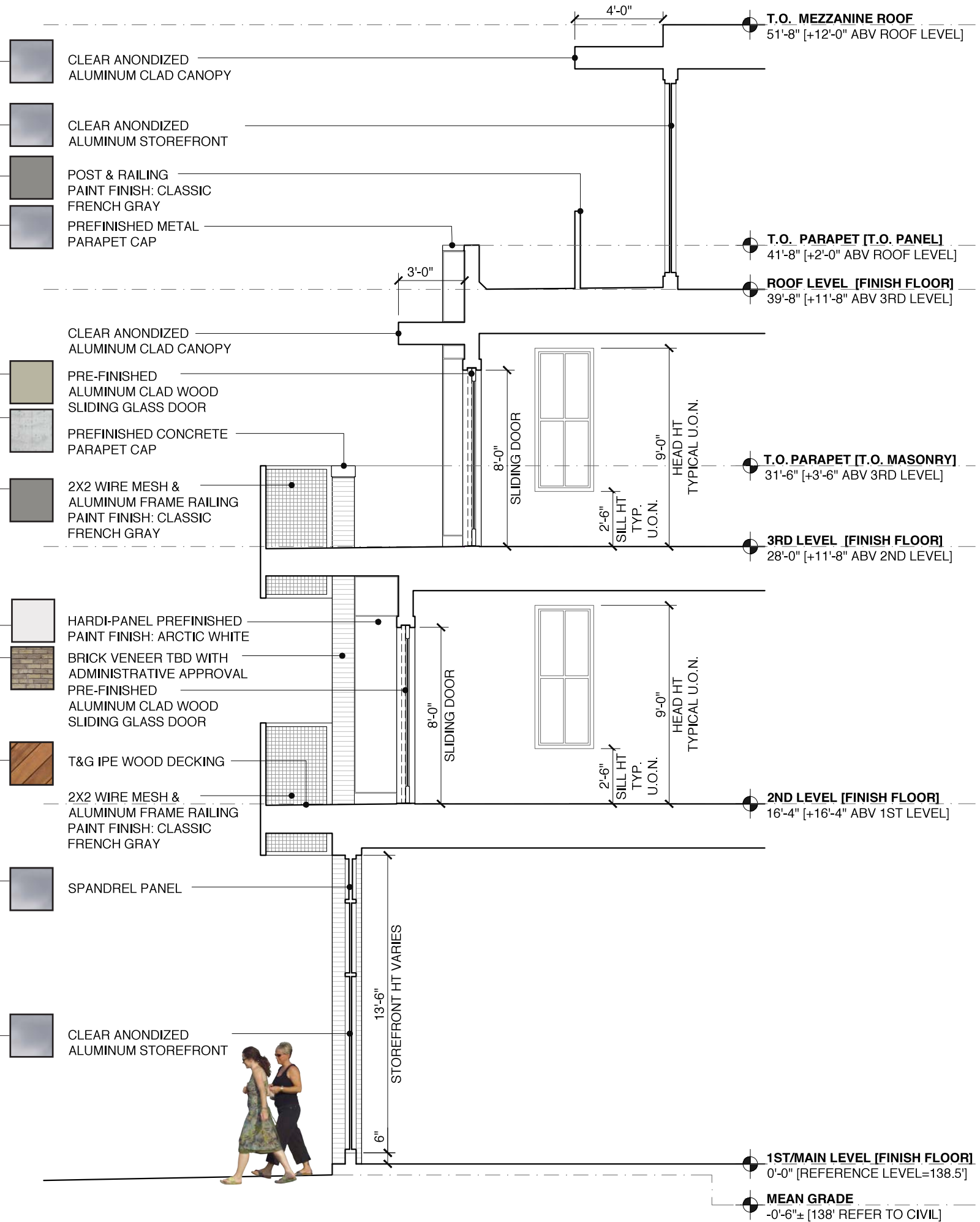
SLIDING BALCONY DOORS
Prefinished Aluminum Clad -- Color Shown Based on Pella "Putty"

WINDOW FRAMES
Prefinished Aluminum Cladding -- Color Shown Based on Pella "Putty"

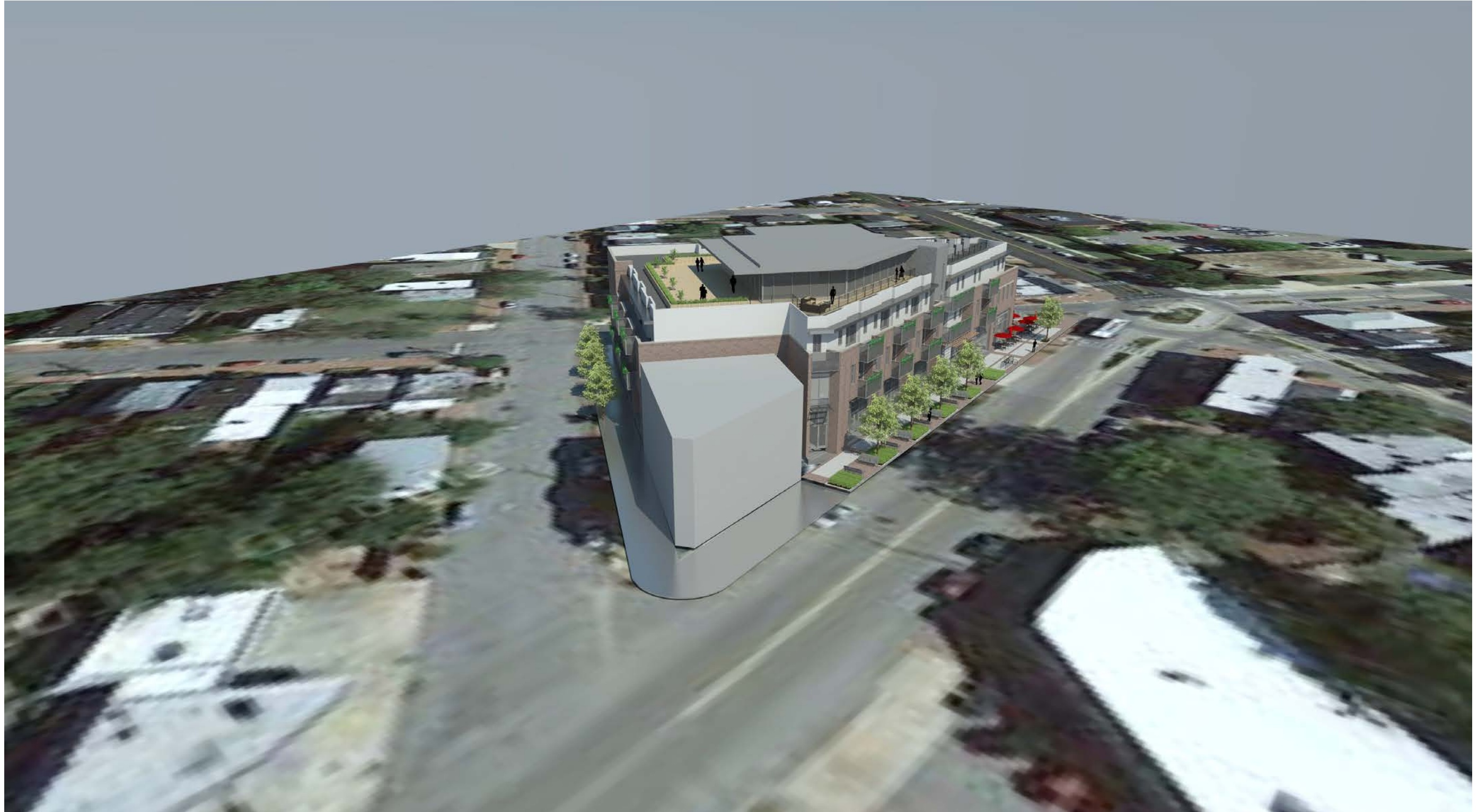
METAL BALCONIES, RAILS, AND EXTERIOR TRIM
Design Guideline 6 - Classic French Gray, SW #0077

GUTTERS AND DOWNSPOUTS
Prefinished Aluminum Color in Dark Gray or Dark Bronze Exact TBD











view from rotary at Jefferson Ave, M and 25th Streets



view from corner of Jefferson Ave and 24th Street



view from corner of 24th and M Streets