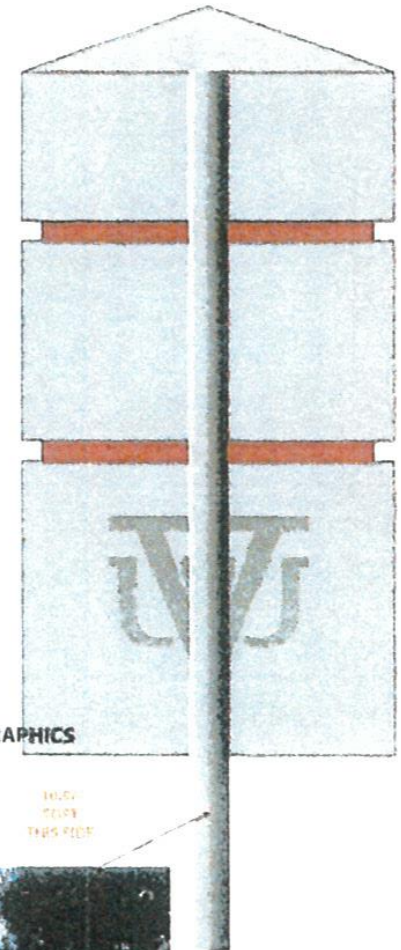
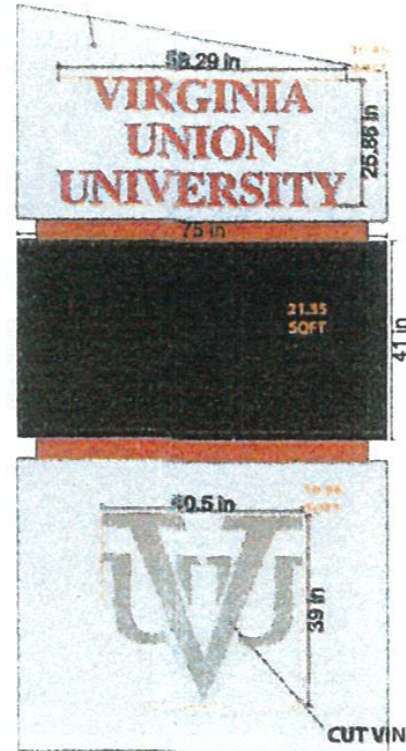
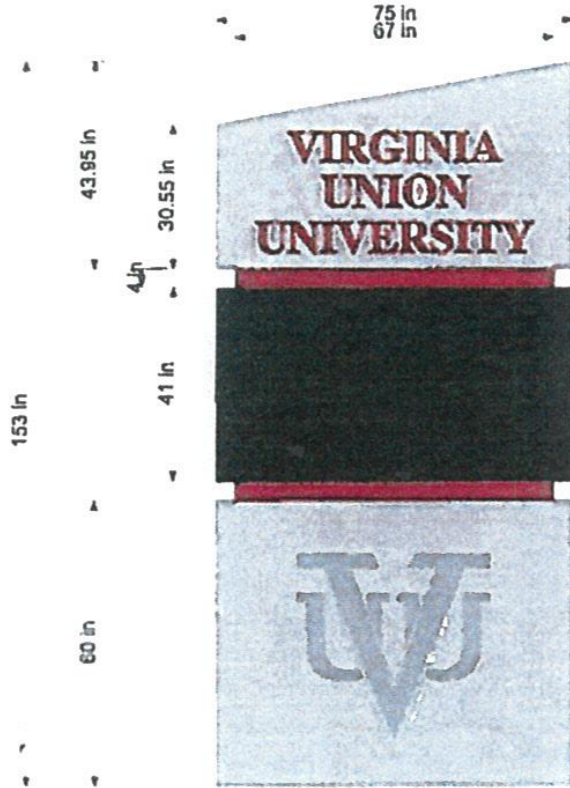
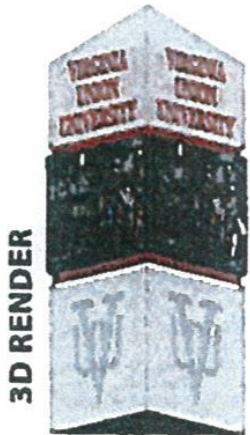


ROUTED FACE WITH  
WHITE PLEX BACKER/BURG VINYL  
INTERNAL RED LED

### 3 SIDED MONUMENT WITH EMC

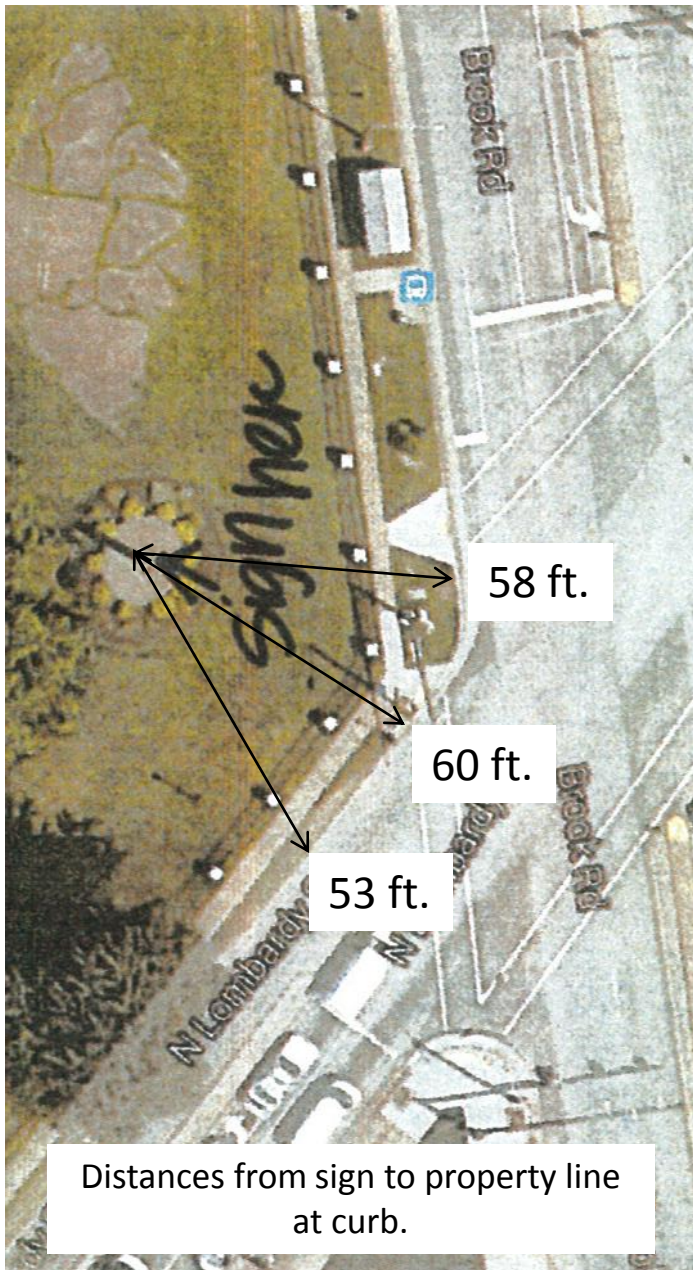


The LED Message Center portion of the sign is two 75" x 41" panel displays in NEMA rated enclosures capable of multi-color LED display. Messages will be primarily static presentation of a VUU message or announcement of an upcoming event. Frequency of new messages are not expected to exceed by-weekly change.

EXISTING CONCRETE BASE  
EXISTING 8"X15' POLE  
TO BE REUSED



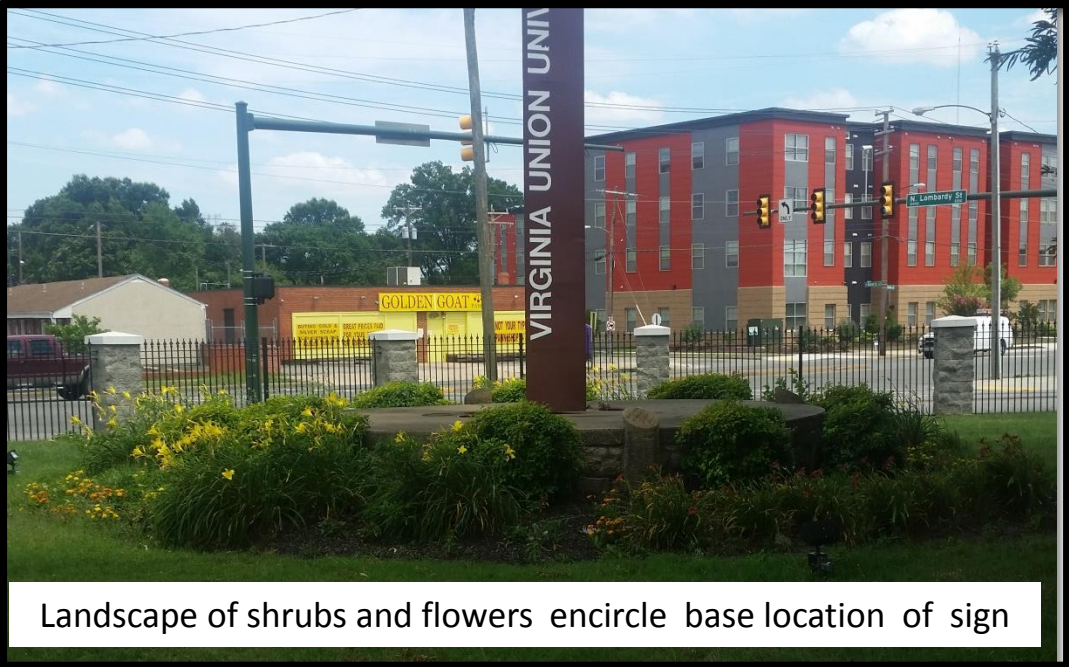
## SIGNAGE DETAIL SHEET FOR NEW MONUMENT SIGN AT VUU



Distances from sign to property line at curb.



Sign placement will be replace existing sign shown at campus corner at Lombardy St. and Brook Rd.



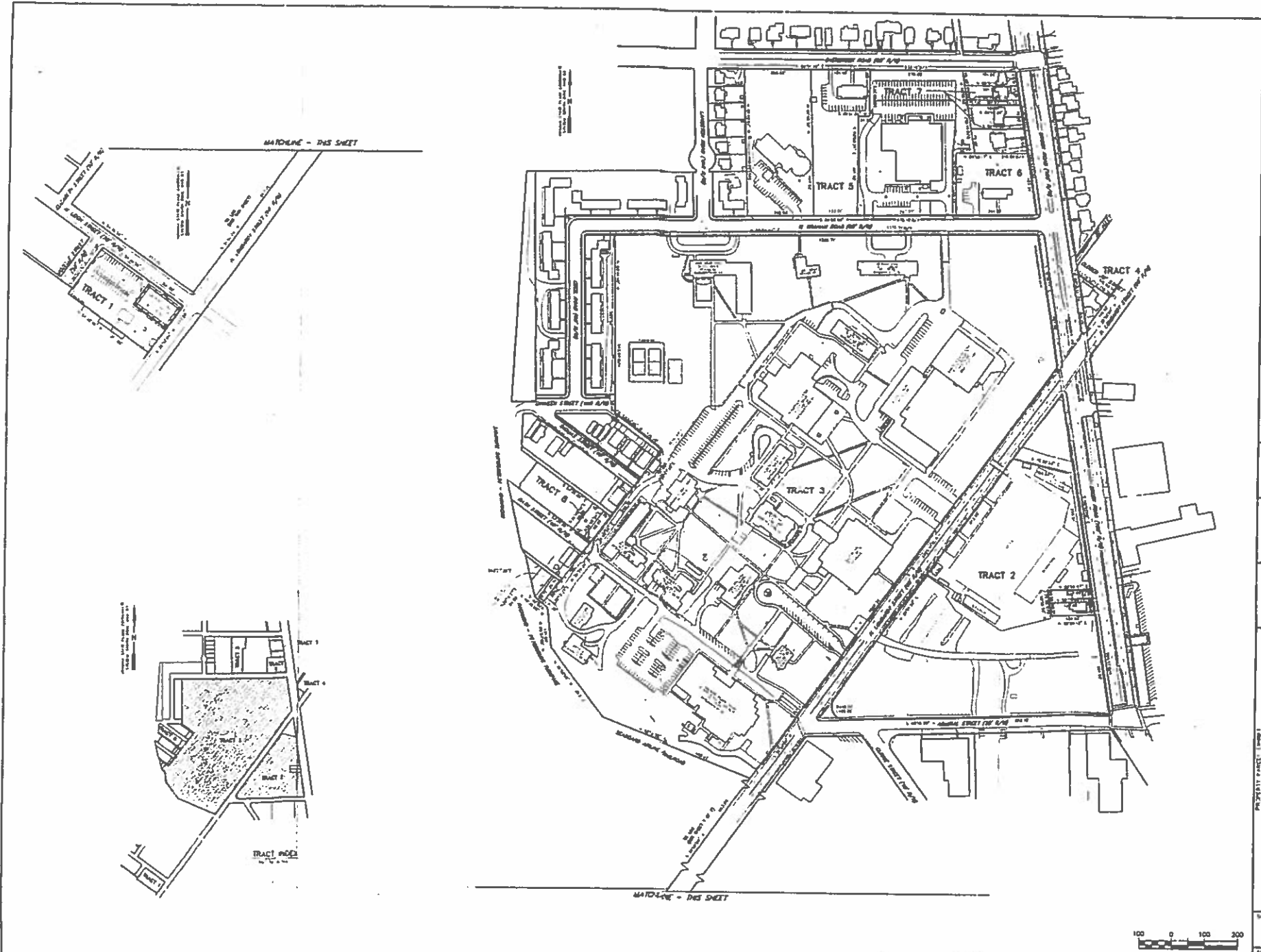
Landscape of shrubs and flowers encircle base location of sign

**SITE PLAN FOR NEW MONUMENT SIGN AT VIRGINIA UNION UNIVERSITY**

Google Maps 1500 N Lombardy St



Imagery ©2016 Google, Map data ©2016 Google 20 ft



MATCHLINE - THIS SHEET

MATCHLINE - THIS SHEET



**MSA, P.C.**  
 Landscape Design • Planning • Surveying  
 Engineering • Environmental Sciences  
 10110 W. 10th Street, Suite 100  
 Charlotte, NC 28226  
 Phone: 704.363.1111  
 Fax: 704.363.1112  
 Website: www.msa-pc.com



NO.	DATE	BY	APP'D	REV.


PROPERTY PARCEL (shown)  
 OF  
 VIRGINIA UNION UNIVERSITY  
 LOCATED IN  
 HENRICO COUNTY, VIRGINIA




REVISE TRACT NO. 2 JCR 09/26/03