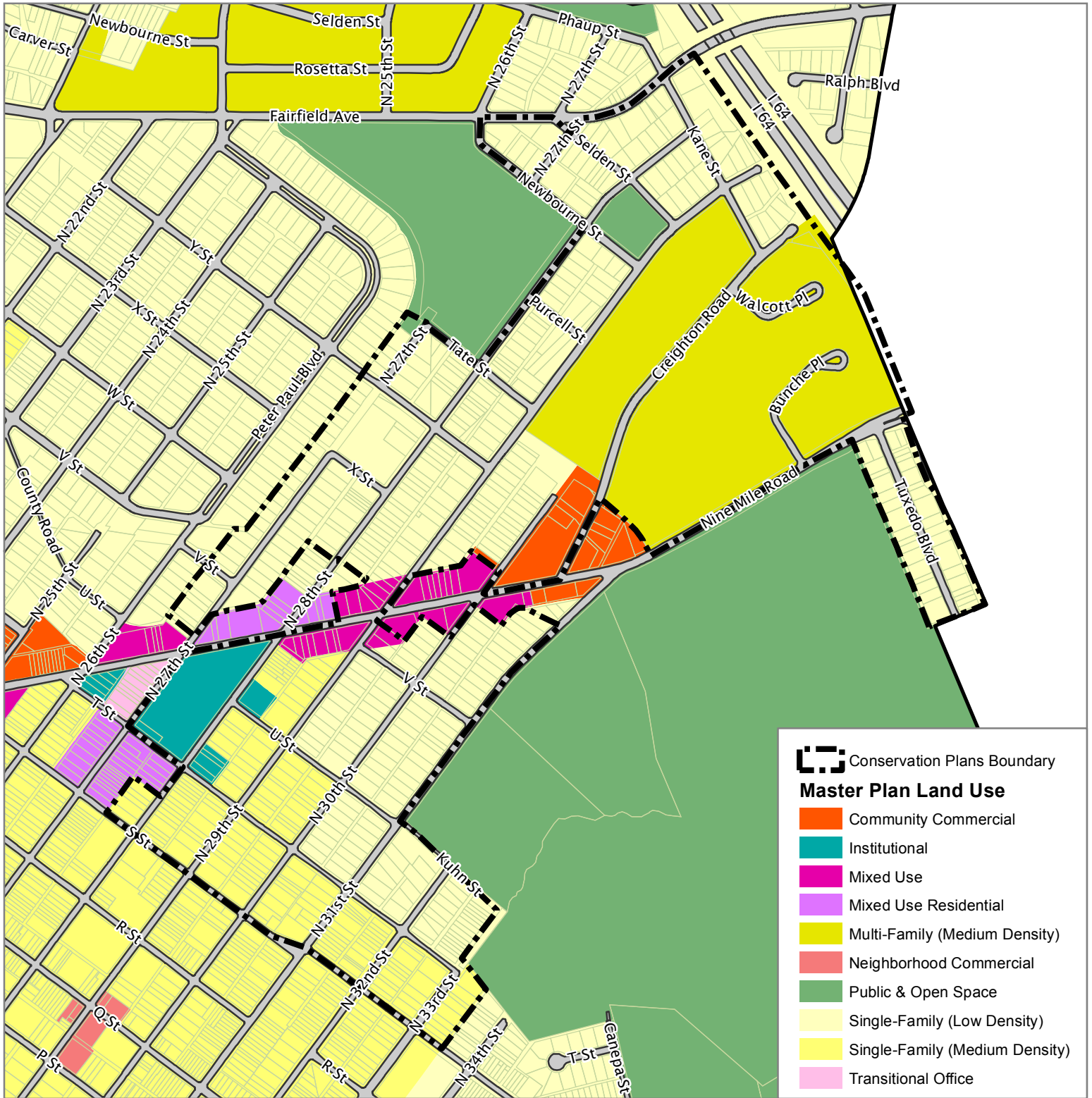


Existing Master Plan Land Use

City of Richmond, VA

Geographic Information Systems



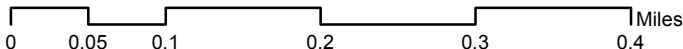
Conservation Plans Boundary

Master Plan Land Use

- Community Commercial
- Institutional
- Mixed Use
- Mixed Use Residential
- Multi-Family (Medium Density)
- Neighborhood Commercial
- Public & Open Space
- Single-Family (Low Density)
- Single-Family (Medium Density)
- Transitional Office



1 inch = 654 feet



Disclaimer:
 The City of Richmond assumes no liability either for any errors, omissions, or inaccuracies in the information provided regardless of the cause of such or for any decision made, action taken, or action not taken by the user in reliance upon any maps or information provided herein.

Location Reference

