

RESILIENCE
PRIDE
SUCCESS

WE ARE RPS



Joint Education Compact Meeting

January 29, 2017

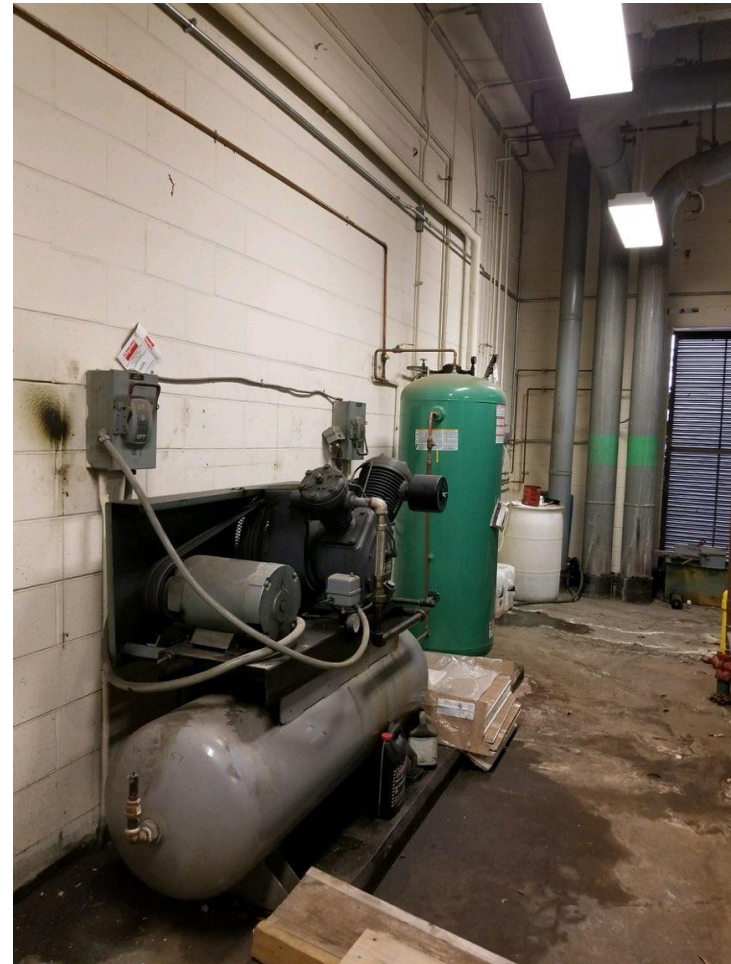
Presented:

Thomas E. Kranz, Interim Superintendent



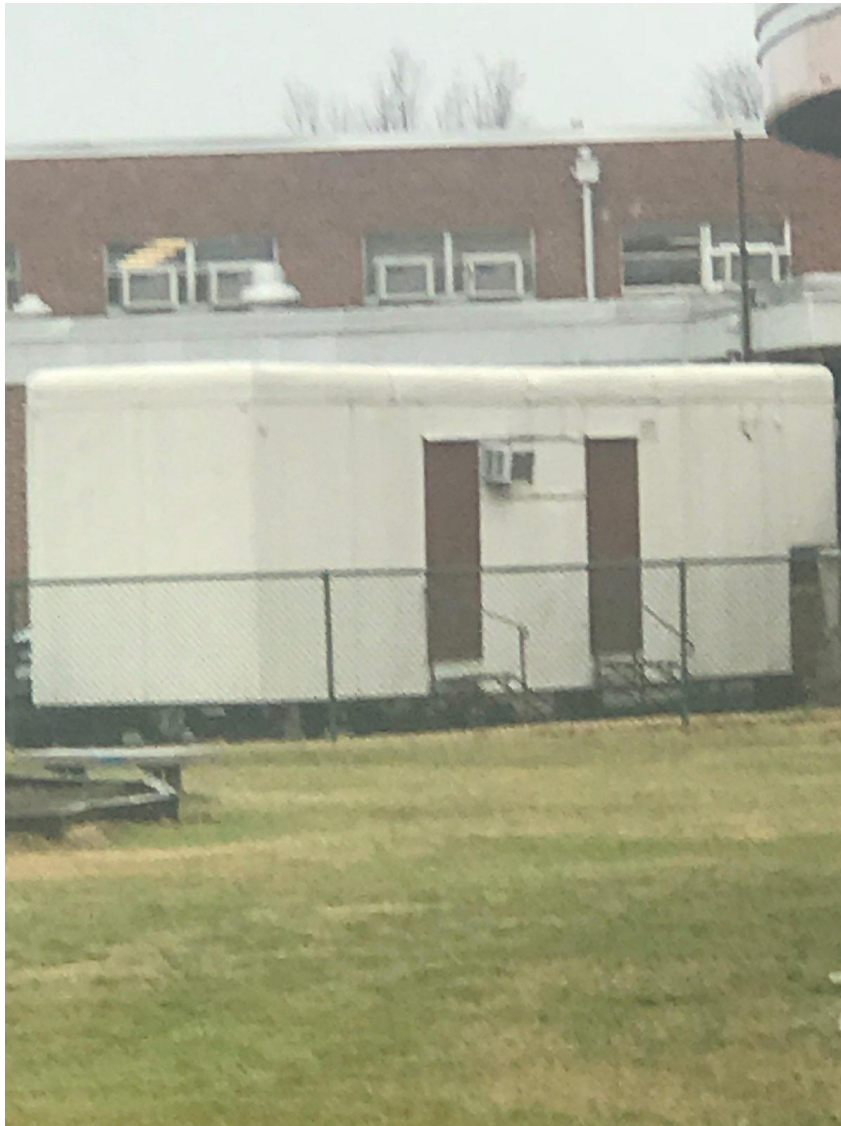
RESILIENCE
PRIDE
SUCCESS

The State of Facilities *Snapshots*



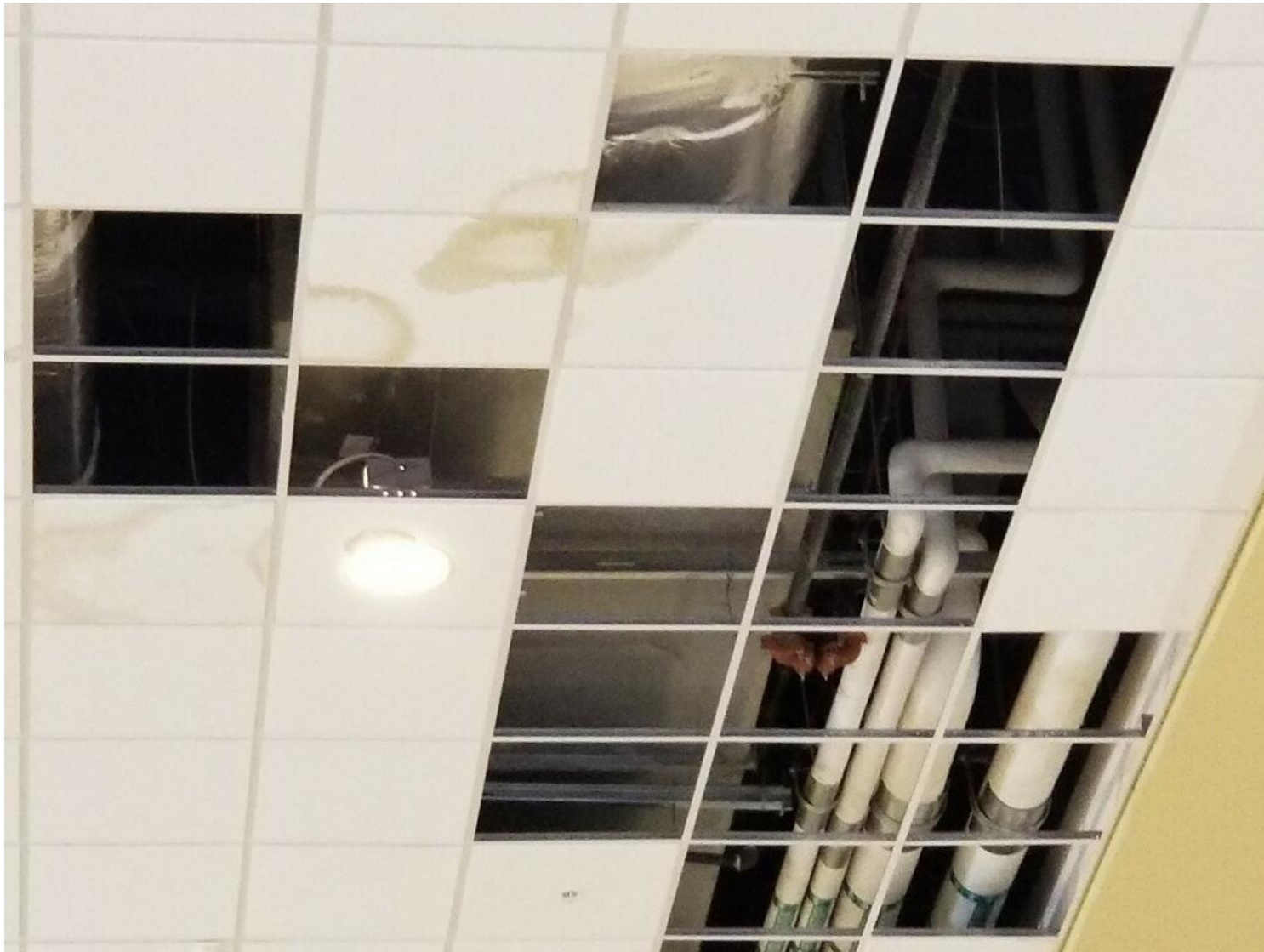
RESILIENCE
PRIDE
SUCCESS

The State of Facilities *Snapshots*



RESILIENCE
PRIDE
SUCCESS

The State of Facilities *Snapshots*



RESILIENCE
PRIDE
SUCCESS

The State of Facilities *Snapshots*



RESILIENCE
PRIDE
SUCCESS

The State of Facilities *Snapshots*



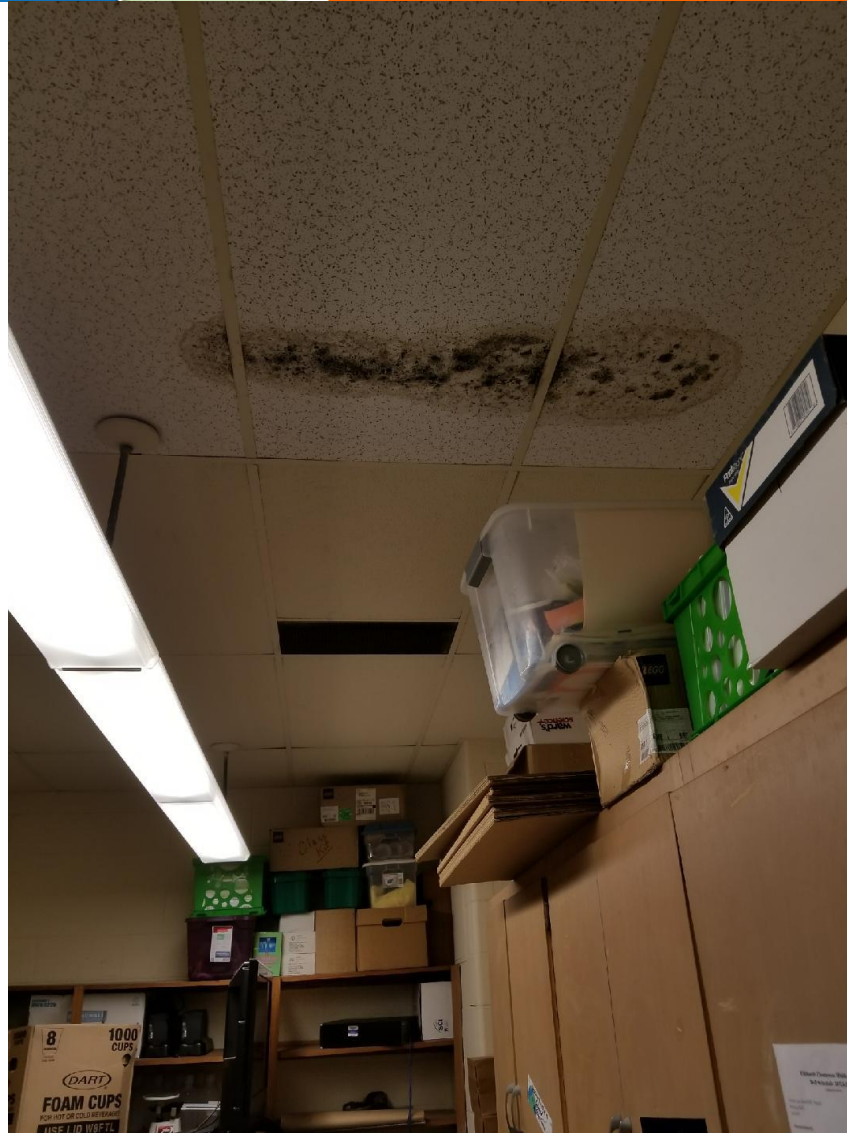
RESILIENCE
PRIDE
SUCCESS

The State of Facilities *Snapshots*



RESILIENCE
PRIDE
SUCCESS

The State of Facilities *Snapshots*



RESILIENCE
PRIDE
SUCCESS

The State of Facilities *Snapshots*



RESILIENCE
PRIDE
SUCCESS

The State of Facilities *Snapshots*



RESILIENCE
PRIDE
SUCCESS

The State of Facilities *Snapshots*



School Board Approved Facility Plan Top Priority Items

- Rezone Broad Rock Elementary School
- New E.S.H. Greene Elementary School
- New Elkhardt-Thompson Middle School
- New George Wythe High School
- New George Mason Elementary School
- New Woodville Elementary School
- Renovated J.L. Francis Elementary School

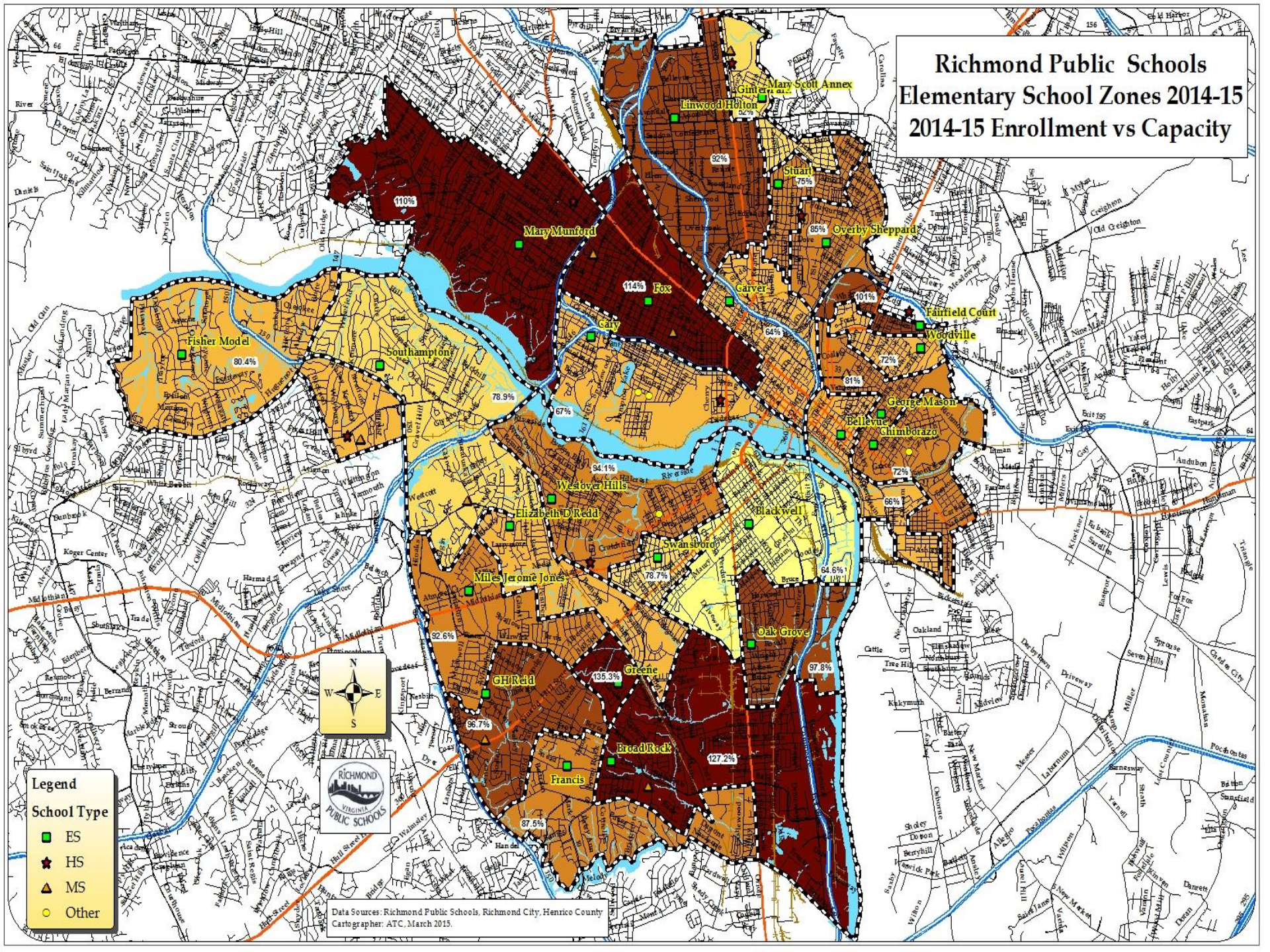


Broad Rock Elementary School

- Rezone to a level of 650 students
- Functional capacity of 585 students
- Eliminate the 24 modular classrooms and modular dining room



Richmond Public Schools Elementary School Zones 2014-15 2014-15 Enrollment vs Capacity

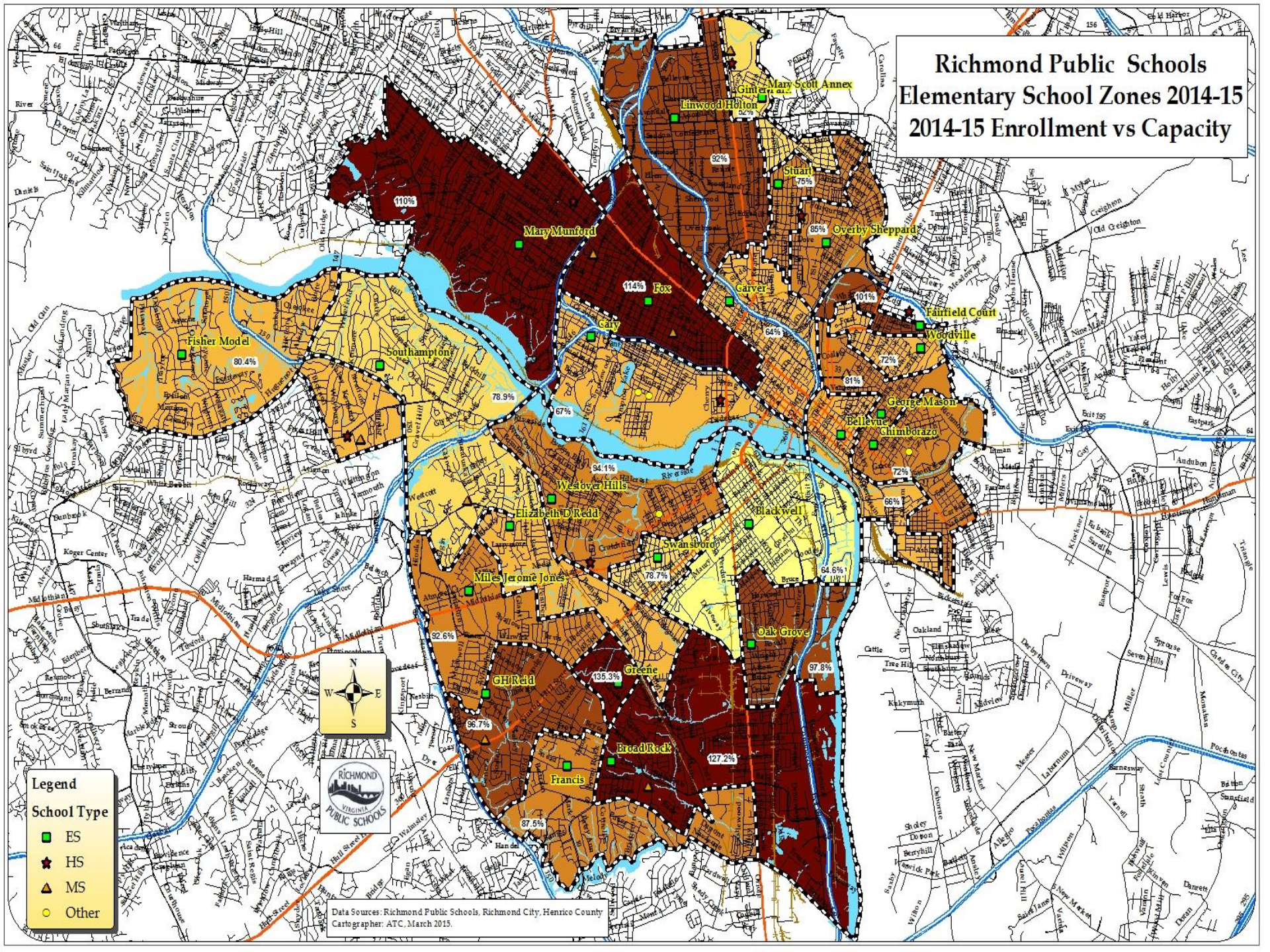


E.S.H. Greene Elementary School

- Construct a new 1,000 seat K-5 school
- Functional capacity – 900 students
- Rezone



Richmond Public Schools Elementary School Zones 2014-15 2014-15 Enrollment vs Capacity

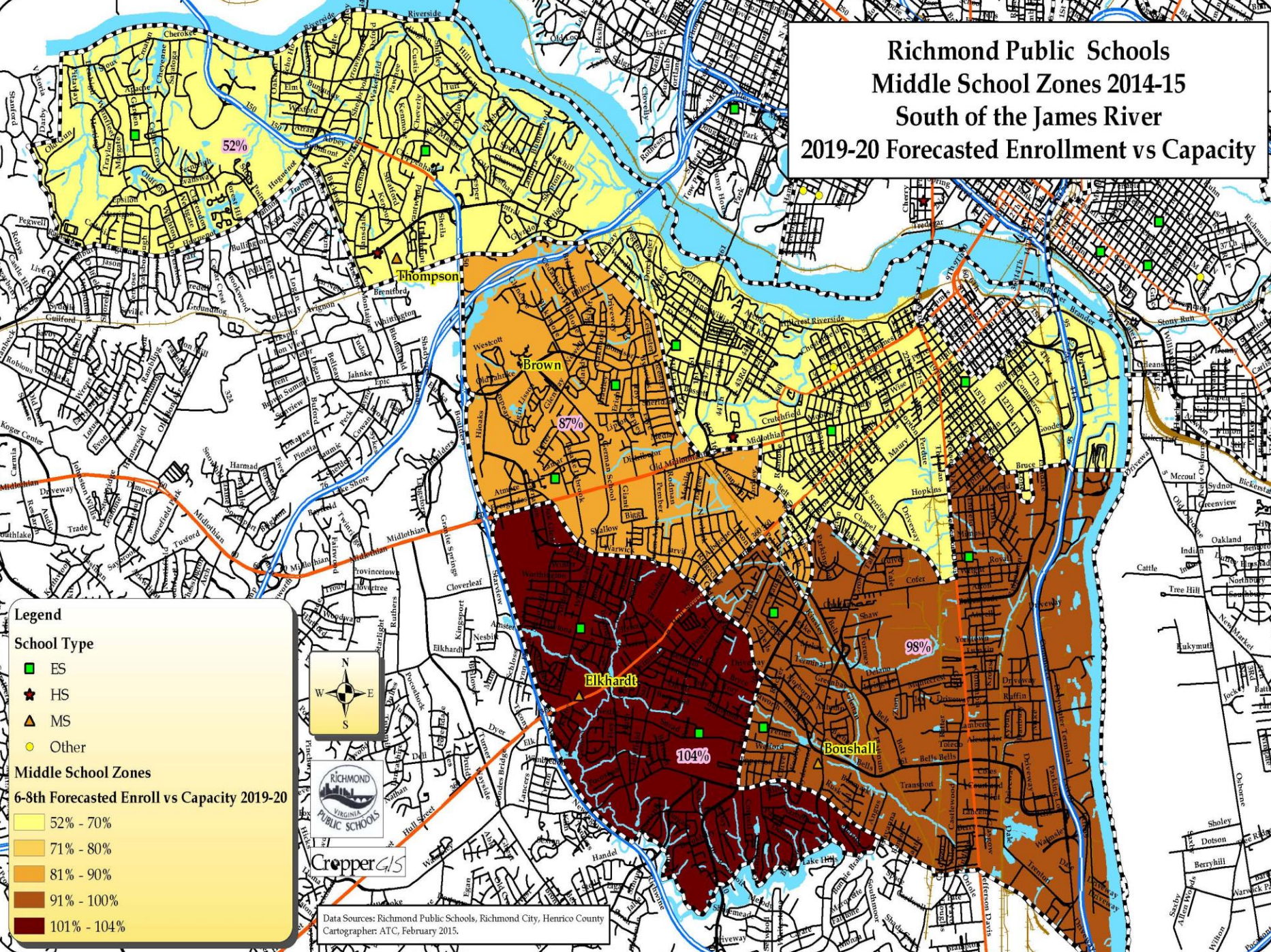


Elkhardt-Thompson Middle School

- Construct a new 1,500 seat middle school
- Functional capacity – 1,350 students
- Rezone



Richmond Public Schools Middle School Zones 2014-15 South of the James River 2019-20 Forecasted Enrollment vs Capacity



Legend

School Type

- ES
- ★ HS
- ▲ MS
- Other

Middle School Zones

6-8th Forecasted Enroll vs Capacity 2019-20

- 52% - 70%
- 71% - 80%
- 81% - 90%
- 91% - 100%
- 101% - 104%



Crepper GIS

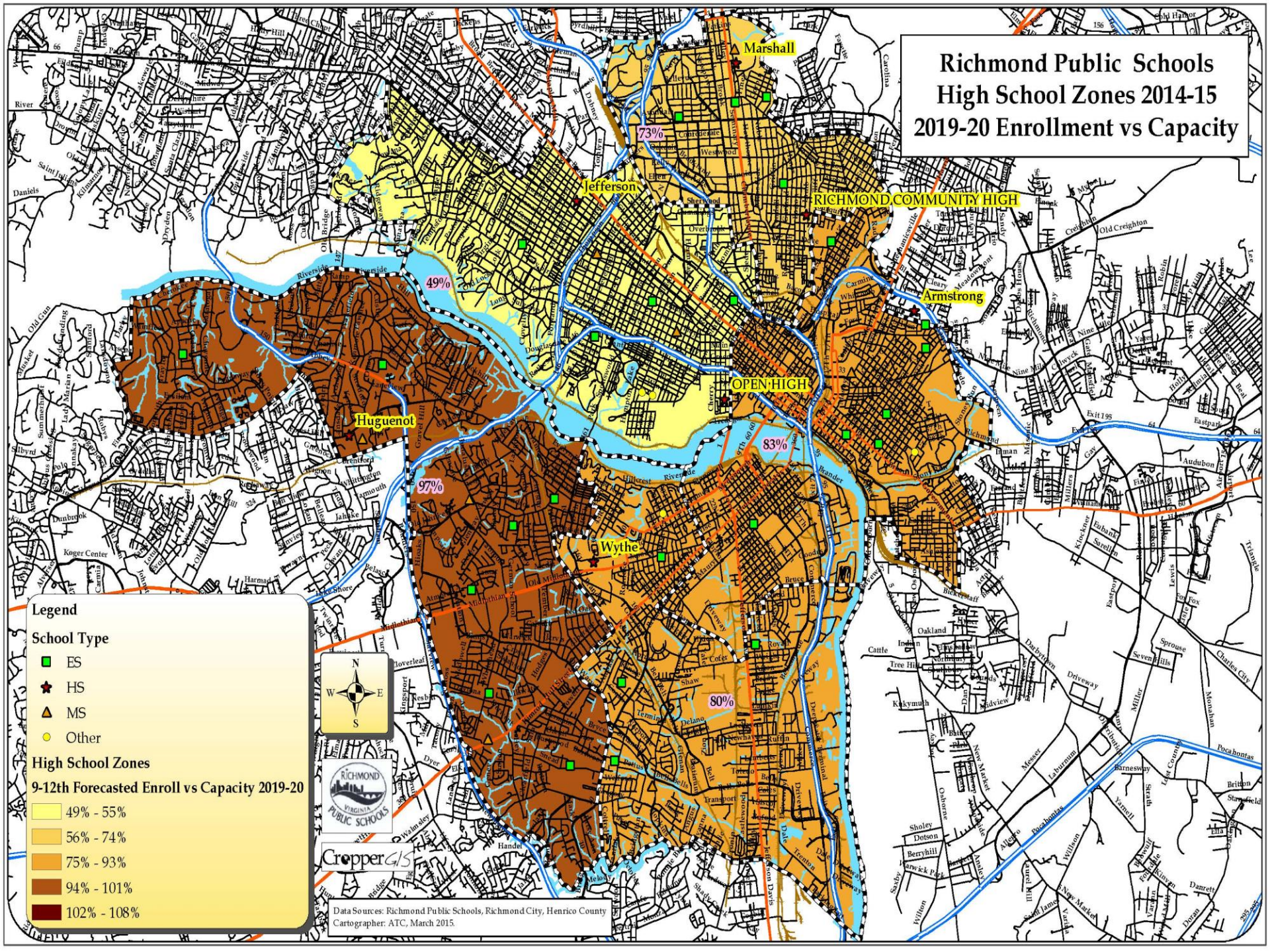
Data Sources: Richmond Public Schools, Richmond City, Henrico County
Cartographer: ATC, February 2015.

George Wythe High School

- Construct a new 2,000-seat high school
- Functional capacity – 1,800 students
- Rezone



Richmond Public Schools High School Zones 2014-15 2019-20 Enrollment vs Capacity



Legend

School Type

- ES (Green square)
- HS (Red star)
- MS (Yellow triangle)
- Other (Yellow circle)

High School Zones

9-12th Forecasted Enroll vs Capacity 2019-20

- 49% - 55% (Lightest yellow)
- 56% - 74% (Light yellow)
- 75% - 93% (Yellow-orange)
- 94% - 101% (Orange)
- 102% - 108% (Darkest orange)

Richmond Virginia Public Schools

Cropper GIS

Data Sources: Richmond Public Schools, Richmond City, Henrico County
Cartographer: ATC, March 2015

George Mason Elementary School

- Construct a new 600 seat school
- Functional capacity – 510 students



Woodville Elementary School

- Construct a new 650 seat school
- Functional capacity – 552 students



Renovated J.L. Francis Elementary

- To address capacity, parking, parent drop-off and bus loop issues
- Eliminate the open classroom concept (similar to Overby-Sheppard & Henderson Middle)

Questions.....

Thomas E. Kranz, Interim Superintendent

780-7700

tkranz@rvaschools.net

