



# Commission of Architectural Review SUBMISSION APPLICATION

City of Richmond, Room 510 – City Hall  
900 East Broad Street, Richmond, Virginia 23219  
PHONE: (804) 646-6335 FAX: (804) 646-5789

**12 COPIES OF SUPPORTING DOCUMENTATION ARE REQUIRED FOR PROCESSING YOUR SUBMISSION**

LOCATION OF WORK: 2230 Venable Street DATE: 25 Aug 2016

OWNER'S NAME: BHC TEL NO.: 804-644-0546

AND ADDRESS: 23 W Broad Street EMAIL: j.bolton@betterhousingcoalition.org

CITY, STATE AND ZIPCODE: Richmond, VA 23220

ARCHITECT/CONTRACTOR'S NAME: Walter Parks Architect TEL. NO.: 804-552-1614

AND ADDRESS: 313 N Adams Street EMAIL: sarah@wparks.com

CITY, STATE AND ZIPCODE: Richmond, VA 23220

Would you like to receive your staff report via email? Yes  No

### REQUEST FOR CONCEPTUAL REVIEW

I hereby request Conceptual Review under the provisions of Chapter 114, Article IX, Division 4, Section 114-930.6(d) of the Richmond City Code for the proposal outlined below in accordance with materials accompanying this application. I understand that conceptual review is advisory only.

### APPLICATION FOR CERTIFICATE OF APPROPRIATENESS

I hereby make application for the issuance of a certificate under the provisions of Chapter 114, Article IX, Division 4 (Old and Historic Districts) of the Richmond City Code for the proposal outlined below in accordance with plans and specifications accompanying this application.

### DETAILED DESCRIPTION OF PROPOSED WORK (Required):

#### STATE HOW THE DESIGN REVIEW GUIDELINES INFORM THE DESIGN OF THE WORK

**PROPOSED.** (Include additional sheets of description if necessary, and **12 copies** of artwork helpful in describing the project. The 12 copies are not required if the project is being reviewed for an administrative approval. See *instruction sheet for requirements.*)

See attached

Signature of Owner or Authorized Agent: X 

Name of Owner or Authorized Agent (please print legibly): John S. Bolton

(Space below for staff use only)

RECEIVED

Received by Commission Secretary

APPLICATION NO. \_\_\_\_\_

DATE 10:30 AUG 26 2016

SCHEDULED FOR \_\_\_\_\_

Note: CAR reviews all applications on a case-by-case basis.



**2230 Venable Street**  
 Richmond, Virginia 23223

project #: 15.53  
 date: 1/8/17

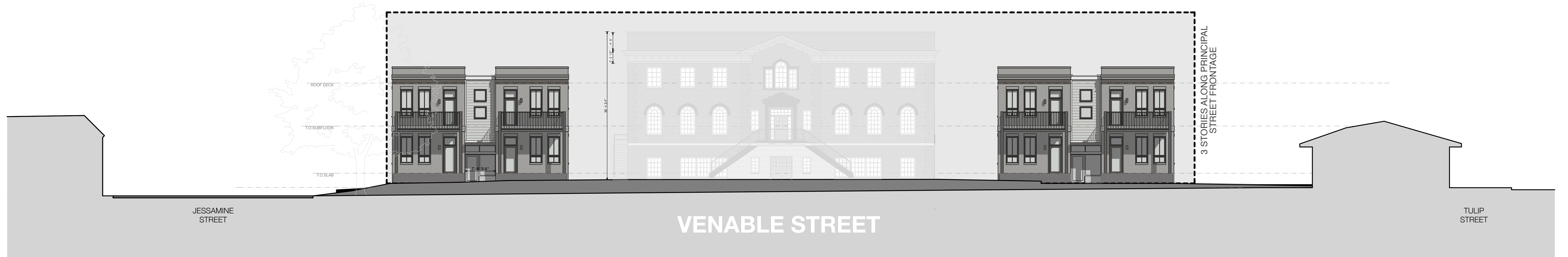
# SITE PLAN

A.1

**walterPARKS**  
 ARCHITECT

313 N. Adams Street  
 Richmond, VA 23220  
 1 804.644.4761  
 1 804.644.4763





**2230 Venable Street**  
 Richmond, Virginia 23223

project #: 15.53  
 date: 1/8/17

# STREET ELEVATIONS

A.2

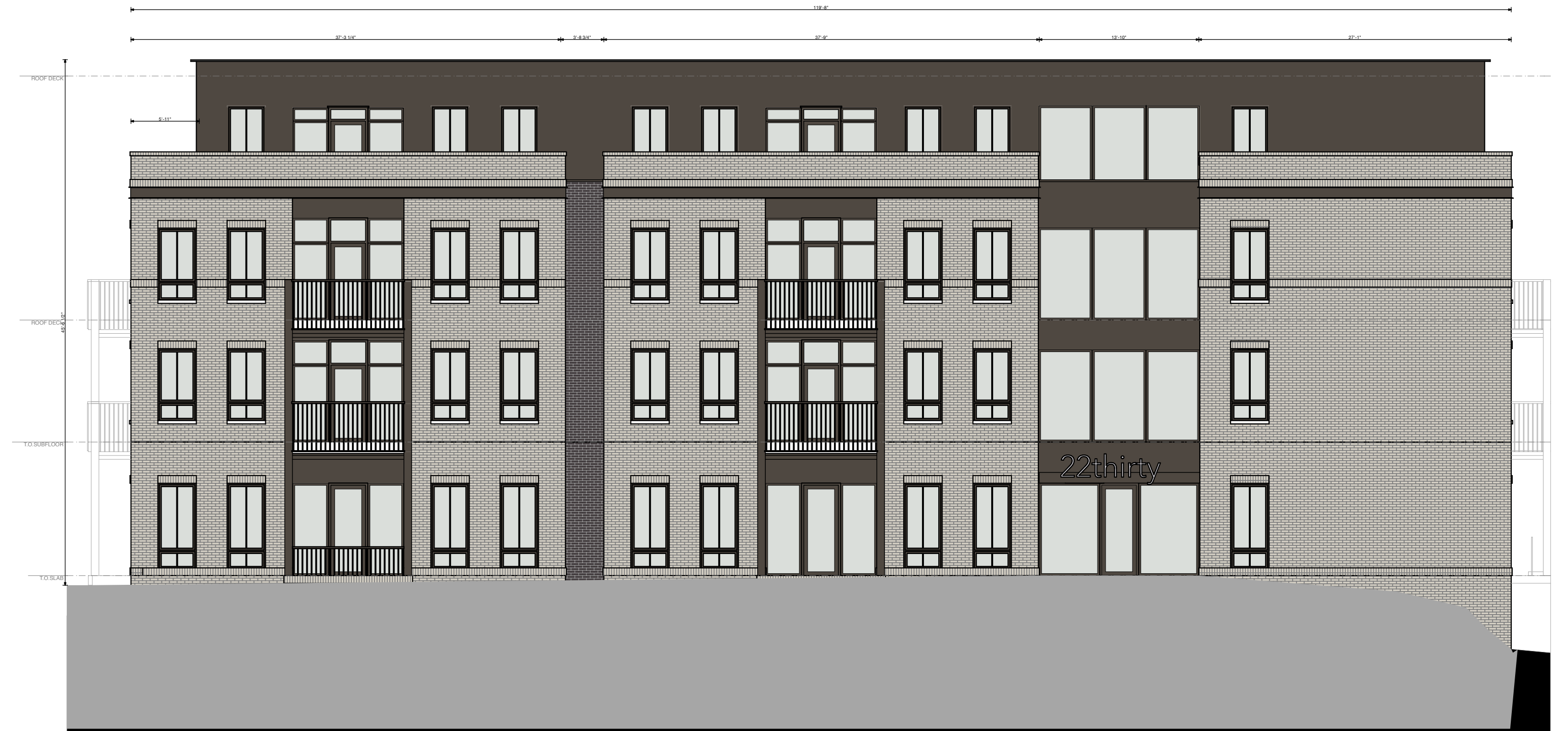
**walterPARKS**  
 ARCHITECT

313 N. Adams Street  
 Richmond, VA 23220  
 1 804.644.4761  
 1 804.644.4763





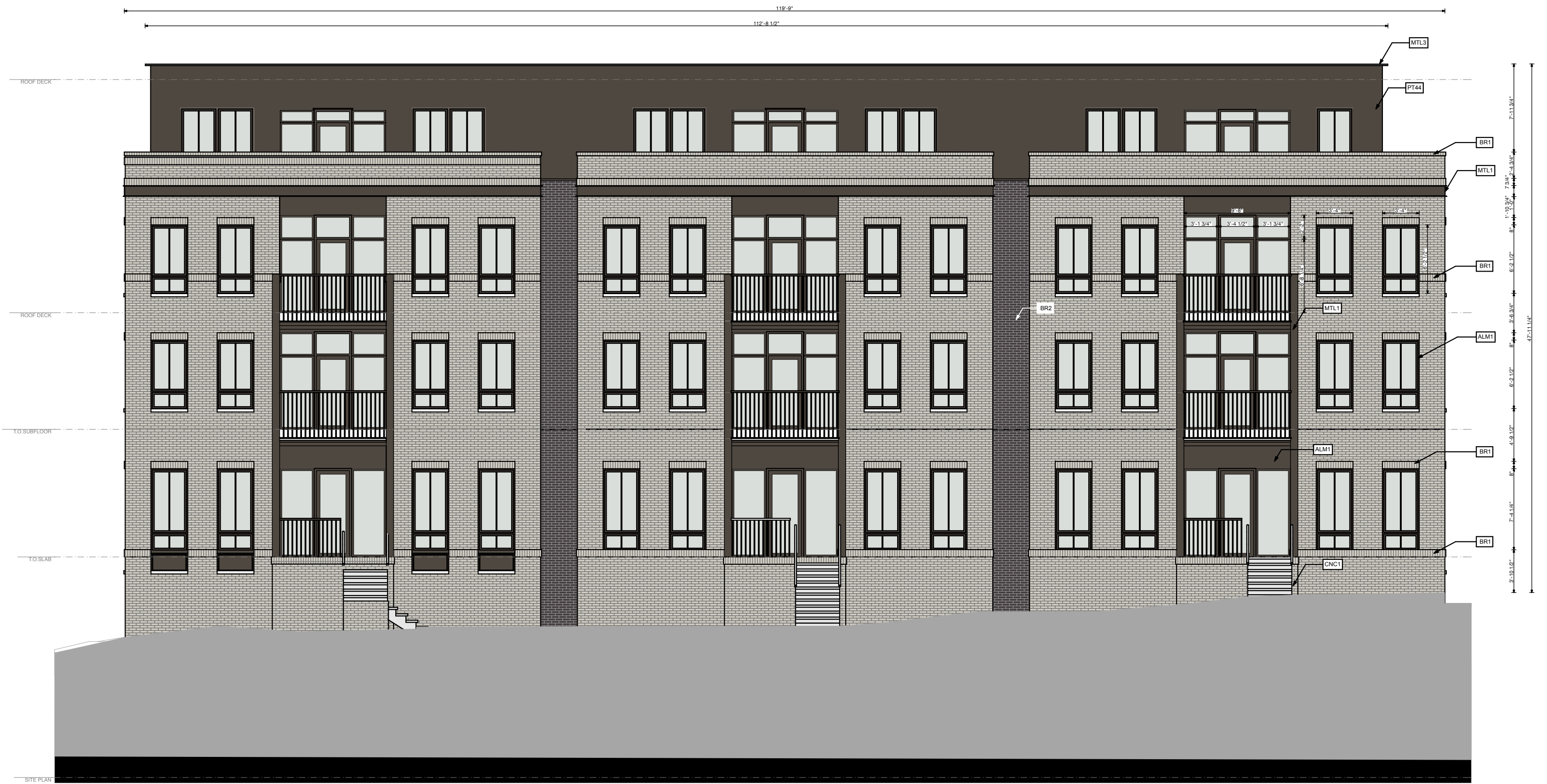
4 STORY - SIDE  
SCALE: 1/8" = 1'-0" 4



4 STORY - REAR ELEVATION  
SCALE: 1/8" = 1'-0" 2



4 STORY - RIGHT SIDE ELEVATION  
SCALE: 1/8" = 1'-0" 3



4 STORY - FRONT ELEVATION  
SCALE: 1/8" = 1'-0" 1

**2230 Venable Street**  
Richmond, Virginia 23223

project #: 15.53  
date: 1/8/17

# 4 STORY BUILDING

A.3 **walterPARKS**  
ARCHITECT

313 N. Adams Street  
Richmond, VA 23220  
1 804.644.4761  
1 804.644.4763



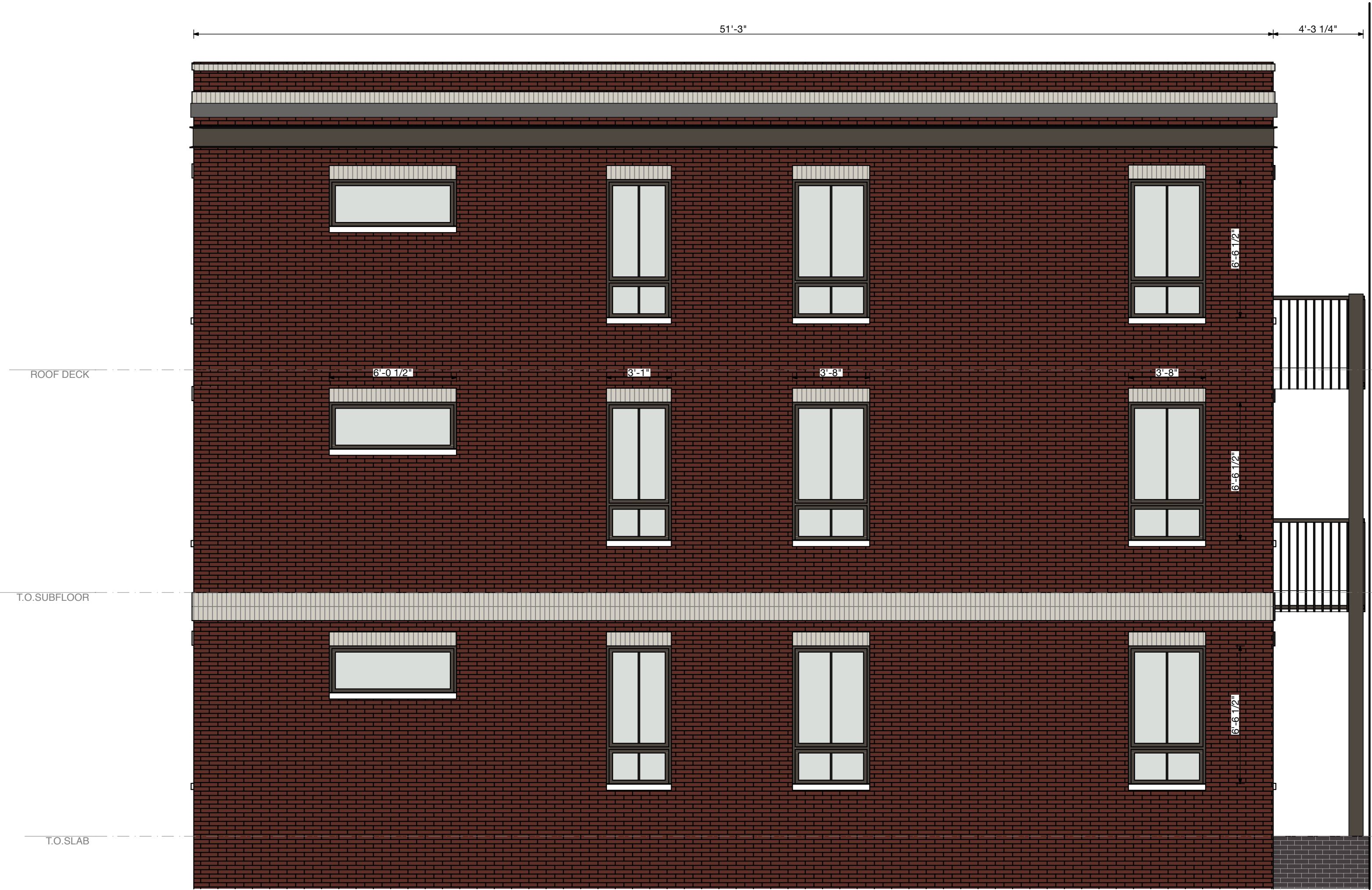


REAR ELEVATION  
SCALE: 1/8" = 1'-0"

3

EXTERIOR FINISHES

Mark	Description	Manufacturer	Product Name/No.	Color/Finish	Location	Notes
<b>NEW BUILDINGS</b>						
ALM1	ALUMINUM WINDOWS / DOORS			SW7000 BLACK FOX	AT BRICK BAYS	CLEAR GLASS
ALM2	ALUMINUM WINDOWS / DOORS			ANODIZED ALUMINUM	AT CEMENTITIOUS BAYS	CLEAR GLASS
ALM3	ALUMINUM WINDOWS / DOORS			WHITE	AT CEMENTITIOUS BUILDING	CLEAR GLASS
BR1	BRICK	ENDCOTT BRICK	LIGHT SANDSTONE	LIGHT SANDSTONE	OVERALL	WIRE CUT
	MORTAR COLOR				OVERALL	
BR2	BRICK	GLENN GERRY BRICK	CLASSIC IRONSPOT SERIES	TWILIGHT IRONSPOT	RECESSED	
	MORTAR COLOR				RECESSED	
BR3	BRICK	CAROLINA CERAMICS		CRANBERRY	3- STORY BUILDING	
	MORTAR COLOR				3- STORY BUILDING	
SL1	STONE WINDOW SILL					
MTL1	STEEL COLUMNS / BEAMS / CHANNELS		SW 7000 BLACK FOX	SEMIGLOSS	AT BRICK BAYS	POWDER COATED - 10 YEAR WARRANTY
MTL2	STEEL COLUMNS / BEAMS / CHANNELS		SW 7000 GLASSIC LIGHT BUFF	SEMIGLOSS	AT CEMENTITIOUS BAYS	POWDER COATED - 10 YEAR WARRANTY
MTL3	COPING			SW7000 BLACK FOX	AT BRICK BAYS	
MTL4	COPING			T80	AT CEMENTITIOUS BAYS	
MTL5	CUSTOM STEEL GUARDRAIL			SW7000 BLACK FOX	AT BRICK BAYS	
MTL6	CUSTOM STEEL GUARDRAIL			T80	AT CEMENTITIOUS BAYS	
CMC1	CONCRETE STAIRS					
PT41	1" SHIP LAY CEMENTITIOUS BEING PAINT	SHERWIN WILLIAMS	SW 7000 BLACK FOX	SEMIGLOSS	OVERALL	WARRIE GRADE - 10 YEAR WARRANTY
PT42	CEMENTITIOUS BEING PAINT	SHERWIN WILLIAMS	SW 7000 BLACK FOX	SEMIGLOSS	RECESSED	WARRIE GRADE - 10 YEAR WARRANTY
PT43	CEMENTITIOUS TRIM PAINT	SHERWIN WILLIAMS	SW 7000 GREEK VILLA	SEMIGLOSS	OVERALL	WARRIE GRADE - 10 YEAR WARRANTY
PT44	1" SHIP LAY CEMENTITIOUS BEING PAINT	SHERWIN WILLIAMS	SW 7000 PORPOISE	SEMIGLOSS	4TH STORY	WARRIE GRADE - 10 YEAR WARRANTY
CT10	PORCELAIN WALL TILE				STREET ELEVATIONS	
FS0	EXTERIOR LIGHT FIXTURE			SW7000 BLACK FOX	BALCONY / PATIO	



3 STORY - SIDE ELEVATION  
SCALE: 1/4" = 1'-0"

2



3 STORY - FRONT ELEVATION  
SCALE: 1/4" = 1'-0"

1

**2230 Venable Street**  
Richmond, Virginia 23223

project #: 15.53  
date: 1/8/17

# 3 STORY BUILDING

A.4

walterPARKS  
ARCHITECT

313 N. Adams Street  
Richmond, VA 23220  
1 804.644.4761  
1 804.644.4763



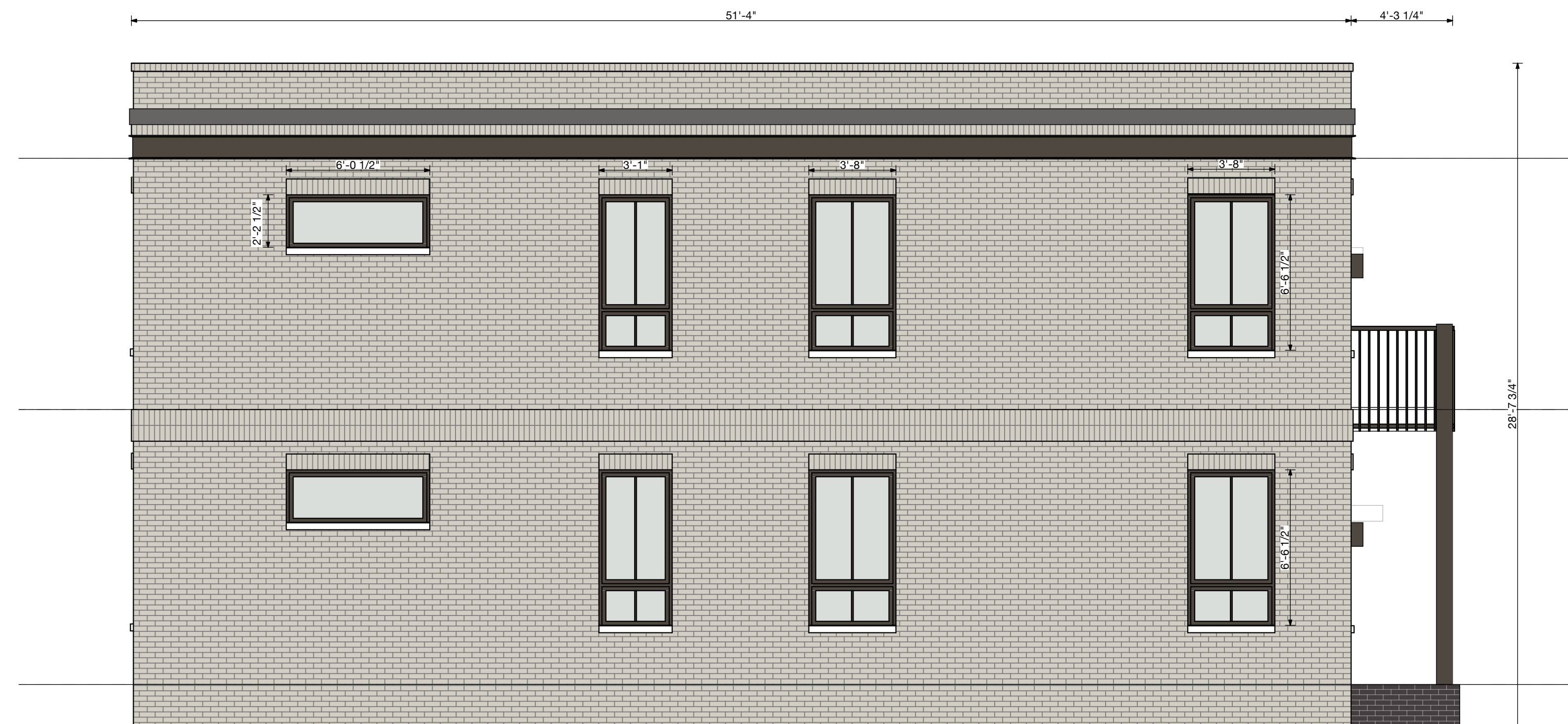
EXTERIOR FINISHES

Mark	Description	Manufacturer	Product Name/No.	Color/Finish	Location	Notes
<b>NEW BUILDINGS</b>						
ALUM1	ALUMINUM WINDOWS / DOORS			SW7030 BLACK FOX	AT BRICK BAYS	CLEAR GLASS
ALUM2	ALUMINUM WINDOWS / DOORS			ANODIZED ALUMINUM	AT CEMENTITIOUS BAYS	CLEAR GLASS
ALUM3	ALUMINUM WINDOWS / DOORS			WHITE	AT CEMENTITIOUS BUILDING	CLEAR GLASS
BR1	BRICK	ENDCOTT BRICK	LIGHT SANDSTONE	LIGHT SANDSTONE	OVERALL	WIRE CUT
BR2	MORTAR COLOR				OVERALL	
BR3	BRICK	GLENKERRY BRICK	CLASSIC HONSPOT SERIES	TWILIGHT HONSPOT	OVERALL	RECESSED
BR4	MORTAR COLOR				RECESSED	
BR5	BRICK	CAROLINA CERAMICS		CHAMBERRY	3- STORY BUILDING	
BR6	MORTAR COLOR				3- STORY BUILDING	
SL1	STONE WINDOW SILL					
MTL1	STEEL COLUMNS / BEAMS / CHANNELS		SW 7030 BLACK FOX	SEMI-GLOSS	AT BRICK BAYS	POWDER COATED - 10 YEAR WARRANTY
MTL2	STEEL COLUMNS / BEAMS / CHANNELS		SW 0050 CLASSIC LIGHT BLUFF	SEMI-GLOSS	AT CEMENTITIOUS BAYS	POWDER COATED - 10 YEAR WARRANTY
MTL3	COFFING		SW7030 BLACK FOX	TBD	AT BRICK BAYS	
MTL4	COFFING		TBD		AT CEMENTITIOUS BAYS	
MTL5	CUSTOM STEEL GUARDRAIL		SW7030 BLACK FOX	TBD	AT BRICK BAYS	
MTL6	CUSTOM STEEL GUARDRAIL		TBD		AT CEMENTITIOUS BAYS	
CTN1	CONCRETE STAIRS					
PT41	1/2" SHIP LAP CEMENTITIOUS SENG PAINT	SHERWIN WILLIAMS	SW 7066 FINE 01 56	SEMI-GLOSS	OVERALL	MARINE GRADE - 10 YEAR WARRANTY
PT42	CEMENTITIOUS SENG PAINT	SHERWIN WILLIAMS	SW 7030 BLACK FOX	SEMI-GLOSS	RECESSED	MARINE GRADE - 10 YEAR WARRANTY
PT43	CEMENTITIOUS TRIM PAINT	SHERWIN WILLIAMS	SW 7551 GREEN VILLA	SEMI-GLOSS	OVERALL	MARINE GRADE - 10 YEAR WARRANTY
PT44	1/2" SHIP LAP CEMENTITIOUS SENG PAINT	SHERWIN WILLIAMS	SW 7030 BLACK FOX	SEMI-GLOSS	3RD STORY	MARINE GRADE - 10 YEAR WARRANTY
CT30	PORCELAIN WALL TILE				STREET ELEVATIONS	
FB0	EXTERIOR LIGHT FIXTURE		SW7030 BLACK FOX		BALCONY / PATIO	



2 STORY - REAR ELEVATION  
SCALE: 1/4" = 1'-0"

3



2 STORY - SIDE ELEVATION  
SCALE: 1/4" = 1'-0"

2



2 STORY - FRONT ELEVATION  
SCALE: 1/4" = 1'-0"

1

2230 Venable Street  
Richmond, Virginia 23223

project #: 15.53  
date: 1/8/17

# 2 STORY BRICK BUILDING

A.5 **walterPARKS**  
ARCHITECT

313 N. Adams Street  
Richmond, VA 23220  
1 804.644.4761  
1 804.644.4763



**EXTERIOR FINISHES**

Mark	Description	Manufacturer	Product Name/No.	Color/Finish	Location	Notes
<b>NEW BUILDINGS</b>						
ALUM1	ALUMINUM WINDOWS / DOORS			SW7030 BLACK FOX	AT BRICK BAYS	CLEAR GLASS
ALUM2	ALUMINUM WINDOWS / DOORS			ANODIZED ALUMINUM	AT CEMENTITIOUS BAYS	CLEAR GLASS
ALUM3	ALUMINUM WINDOWS / DOORS			WHITE	AT CEMENTITIOUS BUILDING	CLEAR GLASS
BR1	BRICK	ENDCOTT BRICK	LIGHT SANDSTONE	LIGHT SANDSTONE	OVERALL	WIRE CUT
BR2	MORTAR COLOR				OVERALL	
BR3	BRICK	GLENGARY BRICK	CLASSIC HONSPOT SERIES	TWILIGHT HONSPOT	RECESSED	
BR3	MORTAR COLOR				RECESSED	
BR3	BRICK	CAROLINA CERAMICS		CHAMBERRY	3-STORY BUILDING	
BR3	MORTAR COLOR				3-STORY BUILDING	
SL1	STONE WINDOW SILL					
MTL1	STEEL COLUMNS / BEAMS / CHANNELS		SW 7030 BLACK FOX	SEMI-GLOSS	AT BRICK BAYS	POWDER COATED - 10 YEAR WARRANTY
MTL2	STEEL COLUMNS / BEAMS / CHANNELS		SW 0050 CLASSIC LIGHT BUFF	SEMI-GLOSS	AT CEMENTITIOUS BAYS	POWDER COATED - 10 YEAR WARRANTY
MTL3	COFFING		SW7030 BLACK FOX	TBD	AT BRICK BAYS	
MTL4	COFFING		TBD	TBD	AT CEMENTITIOUS BAYS	
MTL5	CUSTOM STEEL GUARDRAIL		SW7030 BLACK FOX	TBD	AT BRICK BAYS	
MTL6	CUSTOM STEEL GUARDRAIL		TBD	TBD	AT CEMENTITIOUS BAYS	
CHC1	CONCRETE STAIRS					
PT41	1/2" SHIP LAP CEMENTITIOUS SCANG PAINT	SHERWIN WILLIAMS	SW 7096 FAWN 09 56	SEMI-GLOSS	OVERALL	MARINE GRADE - 10 YEAR WARRANTY
PT42	CEMENTITIOUS SCANG PAINT	SHERWIN WILLIAMS	SW 7030 BLACK FOX	SEMI-GLOSS	RECESSED	MARINE GRADE - 10 YEAR WARRANTY
PT43	CEMENTITIOUS TRIM PAINT	SHERWIN WILLIAMS	SW 7511 GREY VILLA	SEMI-GLOSS	OVERALL	MARINE GRADE - 10 YEAR WARRANTY
PT44	1/2" SHIP LAP CEMENTITIOUS SCANG PAINT	SHERWIN WILLIAMS	SW 7030 BLACK FOX	SEMI-GLOSS	4TH STORY	MARINE GRADE - 10 YEAR WARRANTY
CT10	PORCELAIN WALL TILE				STREET ELEVATIONS	
FB0	EXTERIOR LIGHT FIXTURE		SW7030 BLACK FOX		BALCONY / PATIO	



2 STORY - REAR ELEVATION  
SCALE: 1/4" = 1'-0" 2



2 STORY - SIDE ELEVATION  
SCALE: 1/4" = 1'-0" 3



2 STORY - FRONT ELEVATION  
SCALE: 1/4" = 1'-0" 1

**2230 Venable Street**  
Richmond, Virginia 23223  
project #: 15.53  
date: 1/8/17

# 2 STORY SIDING BUILDING

A.6 **walterPARKS**  
ARCHITECT

313 N. Adams Street  
Richmond, VA 23220  
1 804.644.4761  
1 804.644.4763





1 PERSPECTIVE

**2230 Venable Street**  
Richmond, Virginia 23223

project #: 15.53  
date: 1/8/17

# MASSING

A.7

walterPARKS  
ARCHITECT

313 N. Adams Street  
Richmond, VA 23220  
1 804.644.4761  
1 804.644.4763





**2230 Venable Street**  
Richmond, Virginia 23223

project #: 15.53  
date: 1/8/17

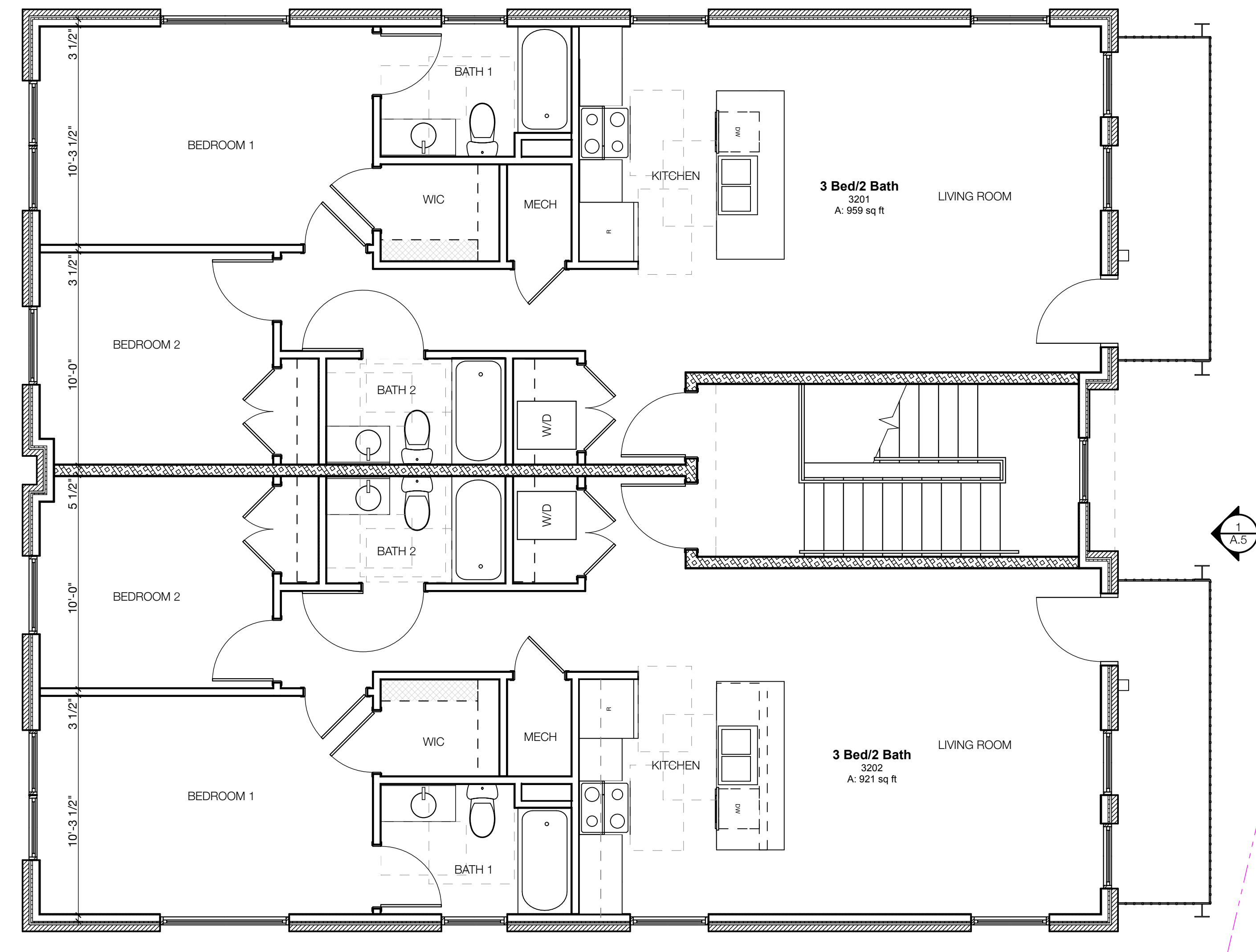
**PERSPECTIVE**

A.8

313 N. Adams Street  
Richmond, VA 23220  
1804.644.4761  
1804.644.4763

**walterPARKS**  
ARCHITECT





**2230 Venable Street**  
 Richmond, Virginia 23223

project #: 15.53  
 date: 1/8/17

# TYPICAL UNITS

A.9

**walterPARKS**  
 ARCHITECT

313 N. Adams Street  
 Richmond, VA 23220  
 1 804.644.4761  
 1 804.644.4763