

Integration of Small Cell Facilities with DPU Streetlights

Pole configurations with addition of small cell equipment:

- Wood
- Roadway steel/aluminum with or without backside fixture
- Pedestrian

Challenges:

- Powering communication equipment from Dominion Energy secondary circuit while maintaining separation from 240V streetlight circuit
- Loading of both roadway and pedestrian poles with equipment

Typical installation requirements
of other municipalities from an
aesthetic viewpoint

Encouraged

Discouraged

Encouraged

Discouraged



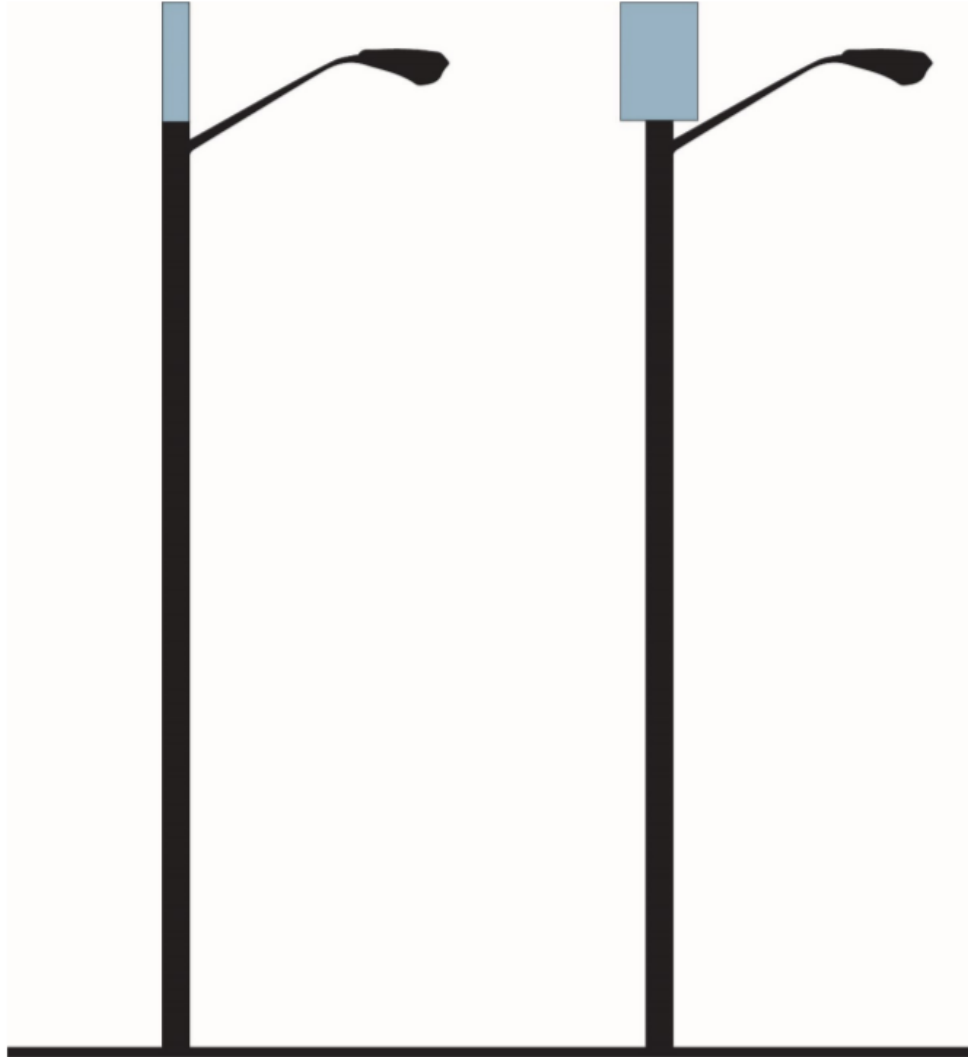
Should minimize crossarms and be of the same design, texture and paint as pole.

Encouraged

Discouraged

Encouraged

Discouraged



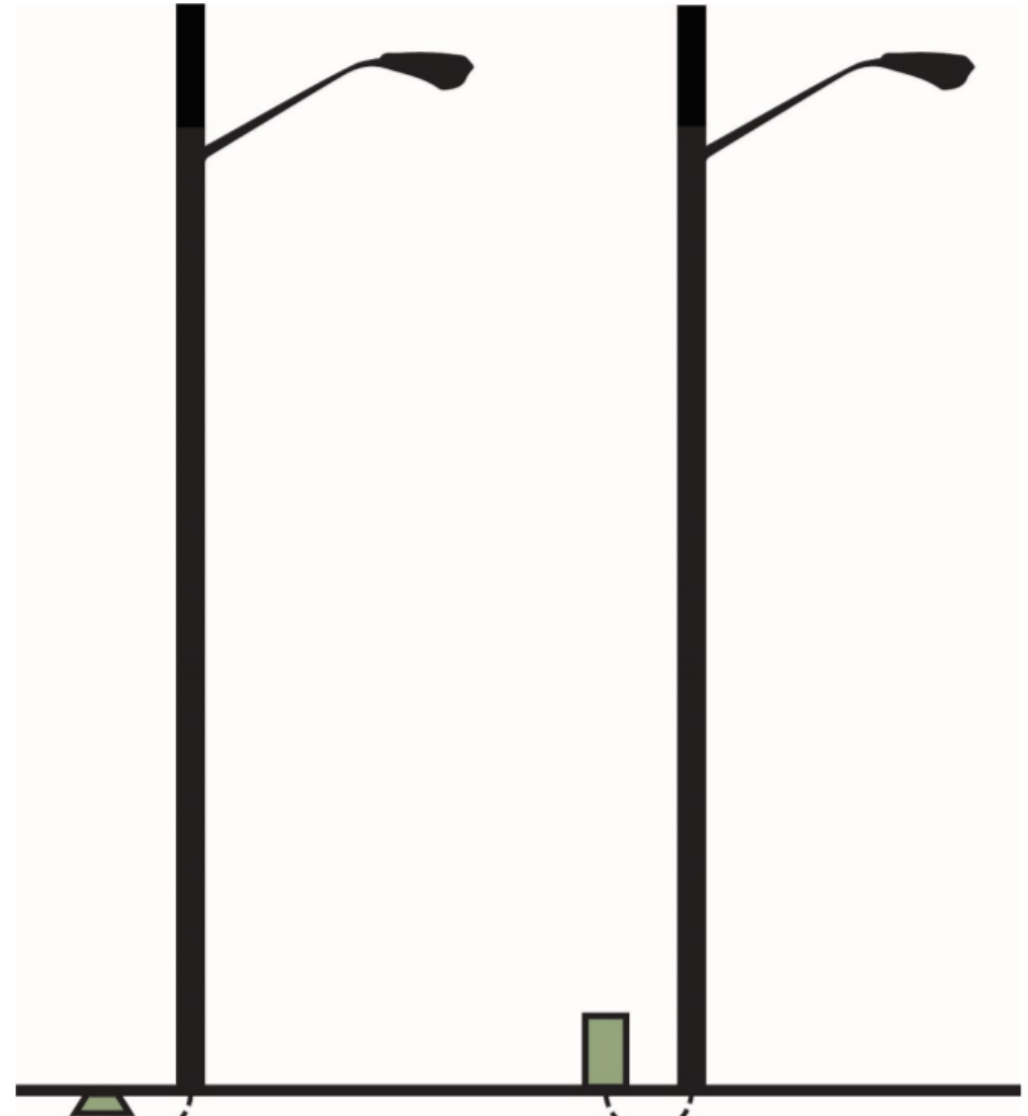
Pole diameter to shroud should be 1:1 ratio and equipment should be within shroud if possible. Equipment should not make the pole unstable and top heavy.

Encouraged

Discouraged

Encouraged

Discouraged



Wires contained in shroud or pole to reduce clutter and underground utility boxes if possible.



Minimize or deny these type of request

Typically installation on ornamental roadway poles

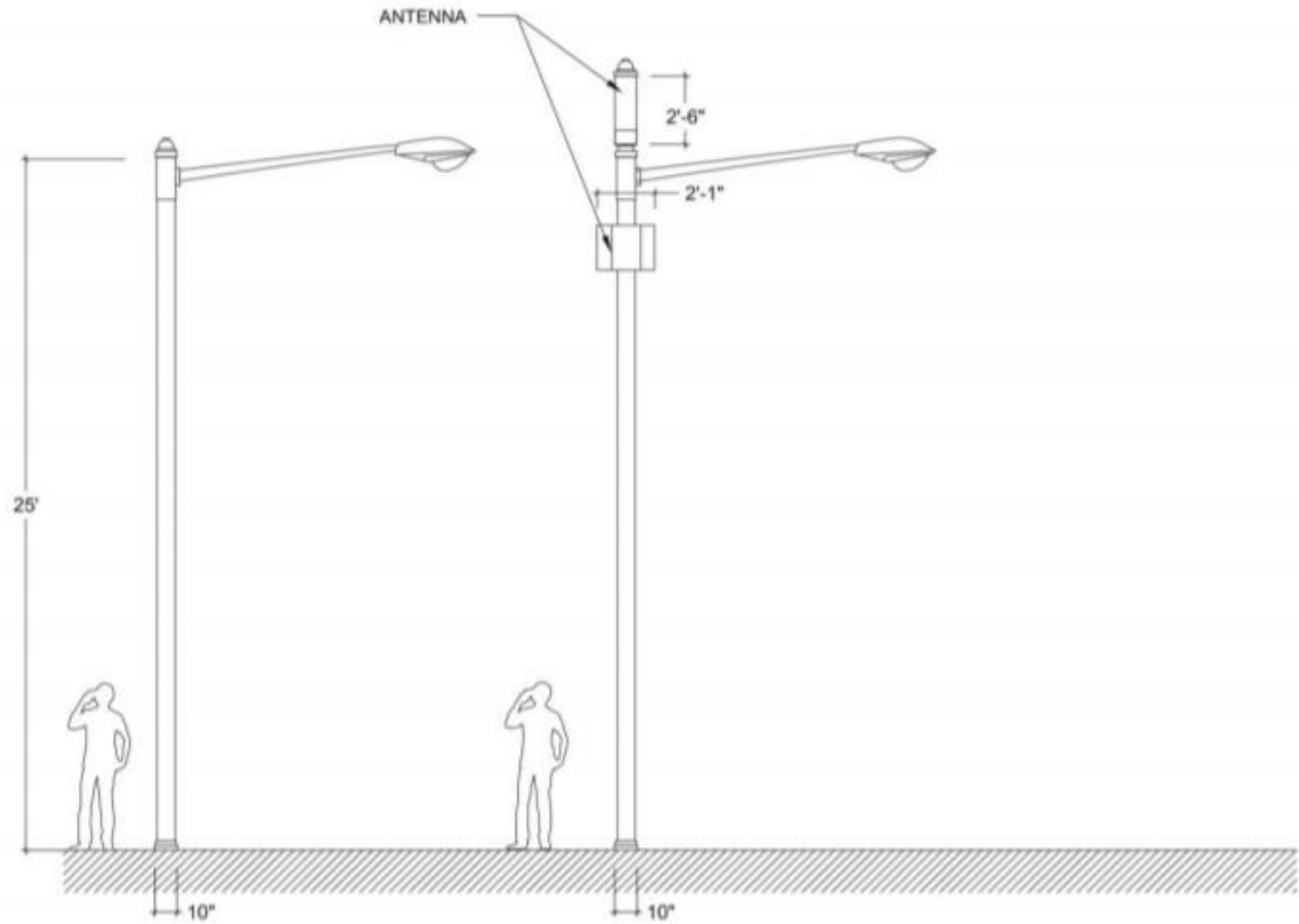


Illustration 1, 5A Pole

ANTENNA 













Typically installation on wood poles

Special Note: DPU utilizes the top of primary poles to rig the installation of primary conductors; training and other equipment would be necessary to change this normal operating method.





Typically installation on ornamental pedestrian poles





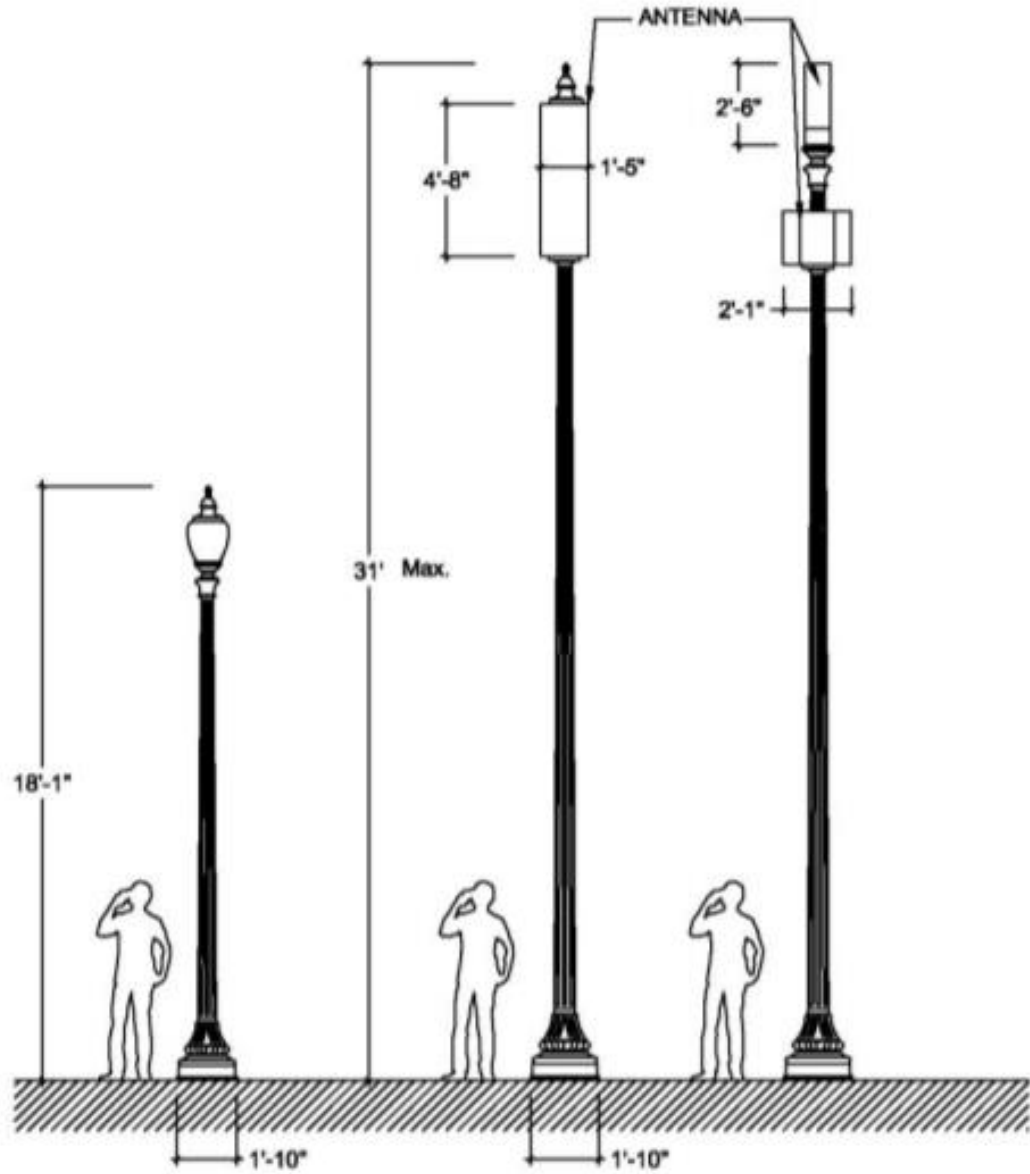


Illustration 3, Washington Standalone Pole