



CITY OF RICHMOND

DEPARTMENT OF PUBLIC WORKS

June 17, 2015

To: Urban Design Committee and City Planning Commission
Attn.: Mr. Jeff Eastman

Re.: Precast sign – Richmond City Justice Center
FINAL UDC/CPC Approval Application
Detailed Project Narrative to accompany the UDC application form

PROJECT DESCRIPTION:

The precast concrete sign will be install at Richmond City Justice Center. The sign is 11'8" X 1'6 3/4" X 4'7 3/4". It includes a precast foundation; two-side precast sign panel; 3/8" painted aluminum Sheriff's name plate recessed in sign panel. It is located at 1701 Fairfield Way, Richmond, VA.

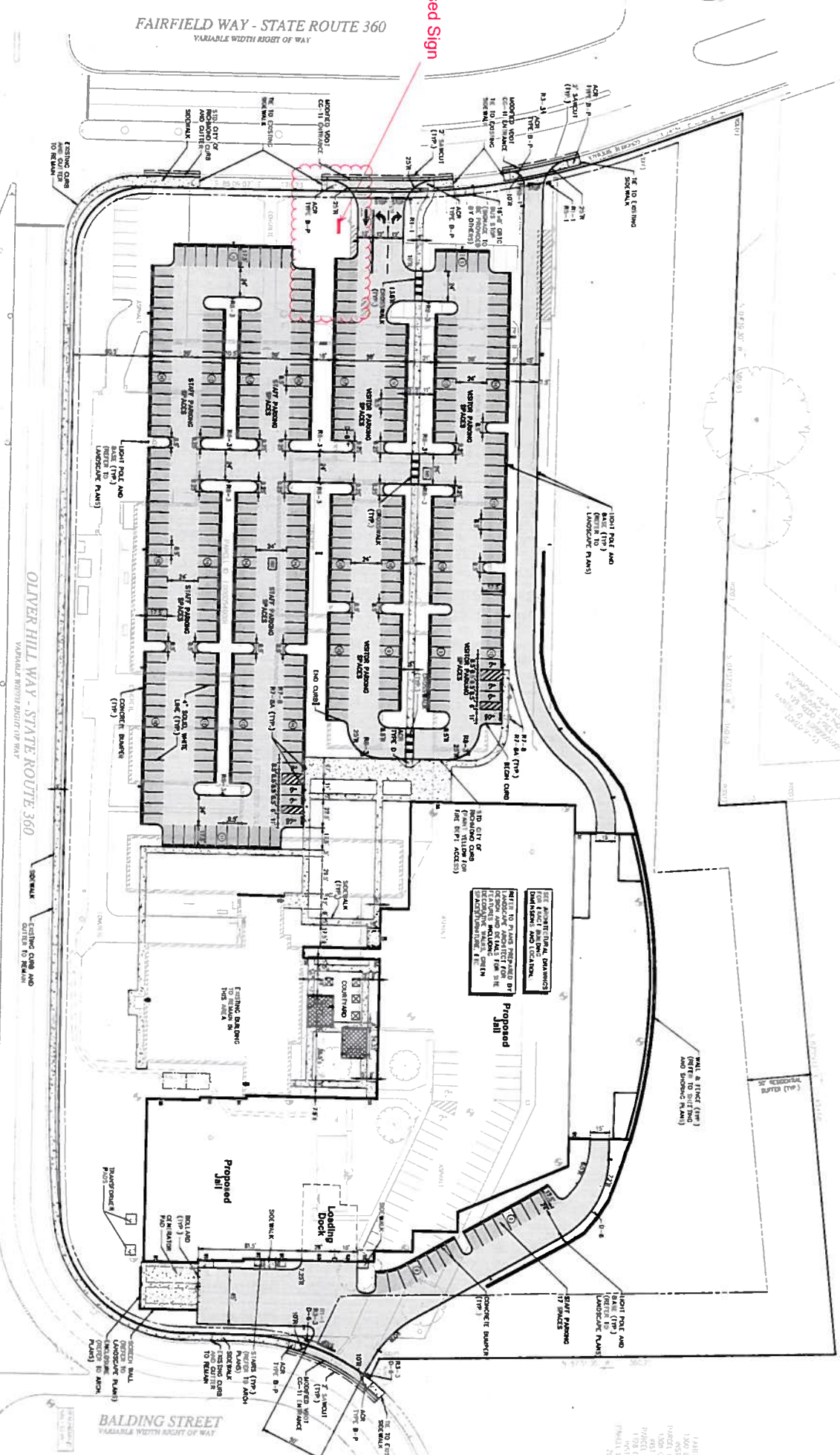
PROJECT SCOPE:

The project will install a sign at Richmond City Justice Center, which is located at 1701 Fairfield Way, Richmond, VA.

PROJECT GOALS:

Physical change:

- Provide sign.



LEGEND

Symbol	Description
[Pattern]	WOOD DUTY PAVEMENT
[Pattern]	STANDARD DUTY PAVEMENT
[Pattern]	CONCRETE

Sign Summary

M.U.T.C.D. Number	Specification	Width	Height	Desc.
81.1	STOP	3'	3'	STOP
81.1	NO PARKING	3'	3'	NO PARKING
81.1	NO STOPPING	3'	3'	NO STOPPING
81.1	NO STANDING	3'	3'	NO STANDING
81.1	NO TRUCKS	3'	3'	NO TRUCKS
81.1	NO BUSES	3'	3'	NO BUSES
81.1	NO MOTORCYCLES	3'	3'	NO MOTORCYCLES
81.1	NO TRAILERS	3'	3'	NO TRAILERS
81.1	NO LOADS EXCEEDING 10,000 LBS	3'	3'	NO LOADS EXCEEDING 10,000 LBS
81.1	NO TRUCKS EXCEEDING 10,000 LBS	3'	3'	NO TRUCKS EXCEEDING 10,000 LBS
81.1	NO TRUCKS EXCEEDING 10,000 LBS	3'	3'	NO TRUCKS EXCEEDING 10,000 LBS

TOMPKINS BUILDERS
 1110 Vermont Avenue, NW
 Washington, DC USA 20005
 F +1 202 788 0170 F +1 202 898 2922

S.B. BALLARD CONSTRUCTION
 2928 Spheres Court, York, VA 22465
 F +1 757 410 5555 F +1 757 451 2973

DAWIS
 7111 Dean Street
 Richmond, VA USA 23222
 F +1 804 321 7822 F +1 804 321 7823

Project: RICHMOND JUSTICE CENTER

HOK
 Local House:
 3223 Grace Street, NW
 Washington, DC USA 20007
 F +1 202 339 8700 F +1 202 339 8800

Consultant Team:
 3515 Mechanical Highway, Suite 1018
 Richmond, VA 23220

3515 Mechanical Highway, Suite 1018
 Richmond, VA 23220

3515 Mechanical Highway, Suite 1018
 Richmond, VA 23220

3515 Mechanical Highway, Suite 1018
 Richmond, VA 23220

Professional Engineer
 License No. 015123
 S.M.P.S.P.

Scale: 1" = 40'

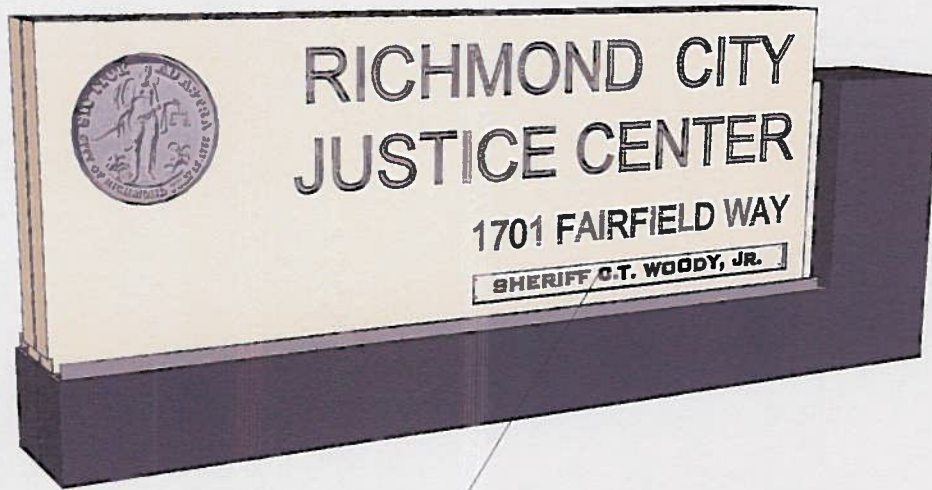
North Arrow

Revisions

No.	Description	By	Date
1	Issue for Review	YTT/KAL/DO	04/24/12
2	Revised	YTT/KAL/DO	04/24/12
3	Revised	YTT/KAL/DO	04/24/12
4	Revised	YTT/KAL/DO	04/24/12
5	Revised	YTT/KAL/DO	04/24/12
6	Revised	YTT/KAL/DO	04/24/12
7	Revised	YTT/KAL/DO	04/24/12
8	Revised	YTT/KAL/DO	04/24/12
9	Revised	YTT/KAL/DO	04/24/12
10	Revised	YTT/KAL/DO	04/24/12
11	Revised	YTT/KAL/DO	04/24/12
12	Revised	YTT/KAL/DO	04/24/12
13	Revised	YTT/KAL/DO	04/24/12
14	Revised	YTT/KAL/DO	04/24/12
15	Revised	YTT/KAL/DO	04/24/12
16	Revised	YTT/KAL/DO	04/24/12
17	Revised	YTT/KAL/DO	04/24/12
18	Revised	YTT/KAL/DO	04/24/12
19	Revised	YTT/KAL/DO	04/24/12
20	Revised	YTT/KAL/DO	04/24/12
21	Revised	YTT/KAL/DO	04/24/12
22	Revised	YTT/KAL/DO	04/24/12
23	Revised	YTT/KAL/DO	04/24/12
24	Revised	YTT/KAL/DO	04/24/12
25	Revised	YTT/KAL/DO	04/24/12
26	Revised	YTT/KAL/DO	04/24/12
27	Revised	YTT/KAL/DO	04/24/12
28	Revised	YTT/KAL/DO	04/24/12
29	Revised	YTT/KAL/DO	04/24/12
30	Revised	YTT/KAL/DO	04/24/12
31	Revised	YTT/KAL/DO	04/24/12
32	Revised	YTT/KAL/DO	04/24/12
33	Revised	YTT/KAL/DO	04/24/12
34	Revised	YTT/KAL/DO	04/24/12
35	Revised	YTT/KAL/DO	04/24/12
36	Revised	YTT/KAL/DO	04/24/12
37	Revised	YTT/KAL/DO	04/24/12
38	Revised	YTT/KAL/DO	04/24/12
39	Revised	YTT/KAL/DO	04/24/12
40	Revised	YTT/KAL/DO	04/24/12
41	Revised	YTT/KAL/DO	04/24/12
42	Revised	YTT/KAL/DO	04/24/12
43	Revised	YTT/KAL/DO	04/24/12
44	Revised	YTT/KAL/DO	04/24/12
45	Revised	YTT/KAL/DO	04/24/12
46	Revised	YTT/KAL/DO	04/24/12
47	Revised	YTT/KAL/DO	04/24/12
48	Revised	YTT/KAL/DO	04/24/12
49	Revised	YTT/KAL/DO	04/24/12
50	Revised	YTT/KAL/DO	04/24/12
51	Revised	YTT/KAL/DO	04/24/12
52	Revised	YTT/KAL/DO	04/24/12
53	Revised	YTT/KAL/DO	04/24/12
54	Revised	YTT/KAL/DO	04/24/12
55	Revised	YTT/KAL/DO	04/24/12
56	Revised	YTT/KAL/DO	04/24/12
57	Revised	YTT/KAL/DO	04/24/12
58	Revised	YTT/KAL/DO	04/24/12
59	Revised	YTT/KAL/DO	04/24/12
60	Revised	YTT/KAL/DO	04/24/12
61	Revised	YTT/KAL/DO	04/24/12
62	Revised	YTT/KAL/DO	04/24/12
63	Revised	YTT/KAL/DO	04/24/12
64	Revised	YTT/KAL/DO	04/24/12
65	Revised	YTT/KAL/DO	04/24/12
66	Revised	YTT/KAL/DO	04/24/12
67	Revised	YTT/KAL/DO	04/24/12
68	Revised	YTT/KAL/DO	04/24/12
69	Revised	YTT/KAL/DO	04/24/12
70	Revised	YTT/KAL/DO	04/24/12
71	Revised	YTT/KAL/DO	04/24/12
72	Revised	YTT/KAL/DO	04/24/12
73	Revised	YTT/KAL/DO	04/24/12
74	Revised	YTT/KAL/DO	04/24/12
75	Revised	YTT/KAL/DO	04/24/12
76	Revised	YTT/KAL/DO	04/24/12
77	Revised	YTT/KAL/DO	04/24/12
78	Revised	YTT/KAL/DO	04/24/12
79	Revised	YTT/KAL/DO	04/24/12
80	Revised	YTT/KAL/DO	04/24/12
81	Revised	YTT/KAL/DO	04/24/12
82	Revised	YTT/KAL/DO	04/24/12
83	Revised	YTT/KAL/DO	04/24/12
84	Revised	YTT/KAL/DO	04/24/12
85	Revised	YTT/KAL/DO	04/24/12
86	Revised	YTT/KAL/DO	04/24/12
87	Revised	YTT/KAL/DO	04/24/12
88	Revised	YTT/KAL/DO	04/24/12
89	Revised	YTT/KAL/DO	04/24/12
90	Revised	YTT/KAL/DO	04/24/12
91	Revised	YTT/KAL/DO	04/24/12
92	Revised	YTT/KAL/DO	04/24/12
93	Revised	YTT/KAL/DO	04/24/12
94	Revised	YTT/KAL/DO	04/24/12
95	Revised	YTT/KAL/DO	04/24/12
96	Revised	YTT/KAL/DO	04/24/12
97	Revised	YTT/KAL/DO	04/24/12
98	Revised	YTT/KAL/DO	04/24/12
99	Revised	YTT/KAL/DO	04/24/12
100	Revised	YTT/KAL/DO	04/24/12

Layout and Materials Plan

C3.01

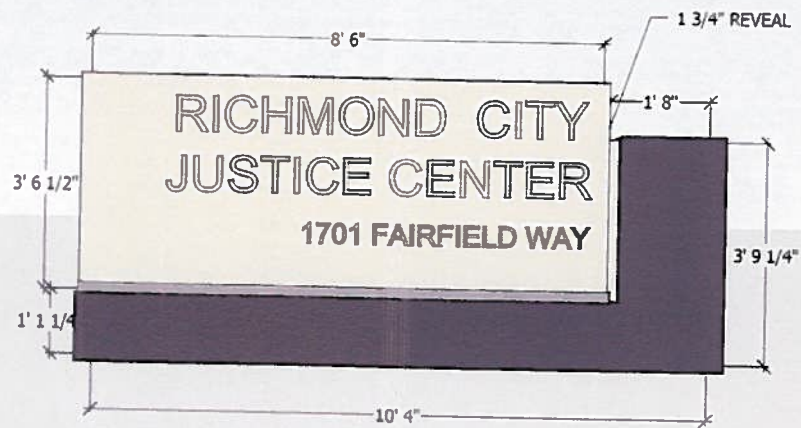


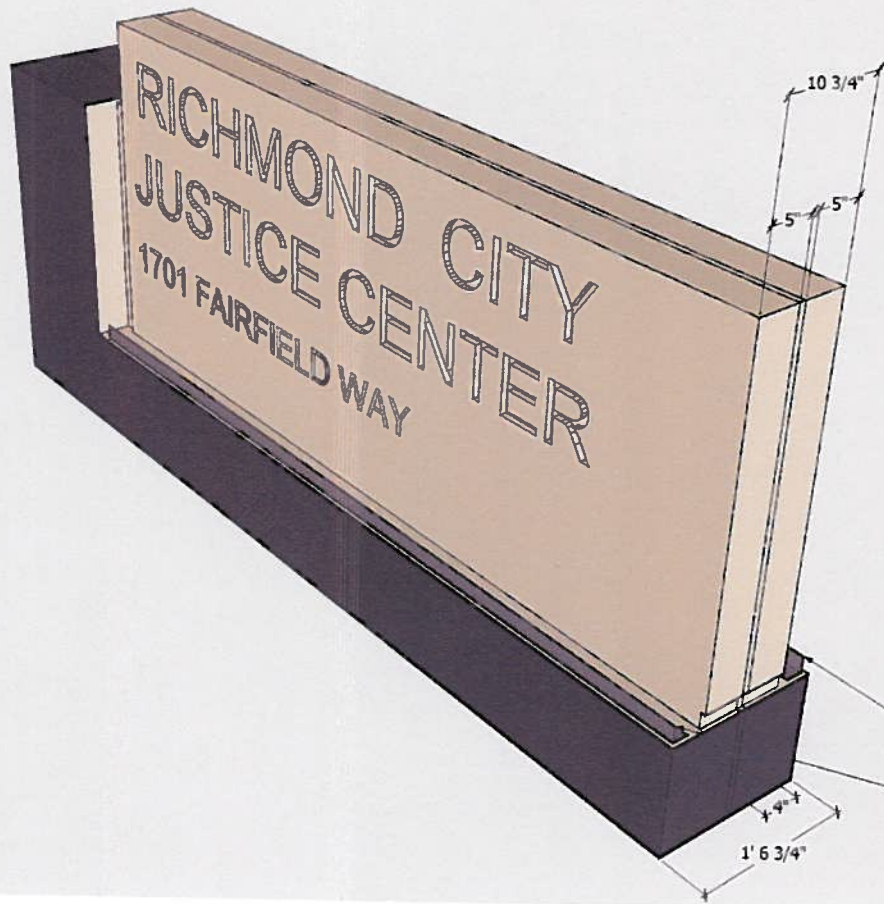
RECESSED CONCRETE PANEL WITH PIN MOUNTED ALUMINUM LETTERING
PANEL ATTACHED TO SIGN WITH SECURITY SCREWS



RECESSED CONCRETE PANEL WITH PIN MOUNTED ALUMINUM LETTERING
PANEL ATTACHED TO SIGN WITH SECURITY SCREWS







LED LIGHT FIXTURE

LED LIGHT FIXTURE - COLOR TO MATCH PRECAST