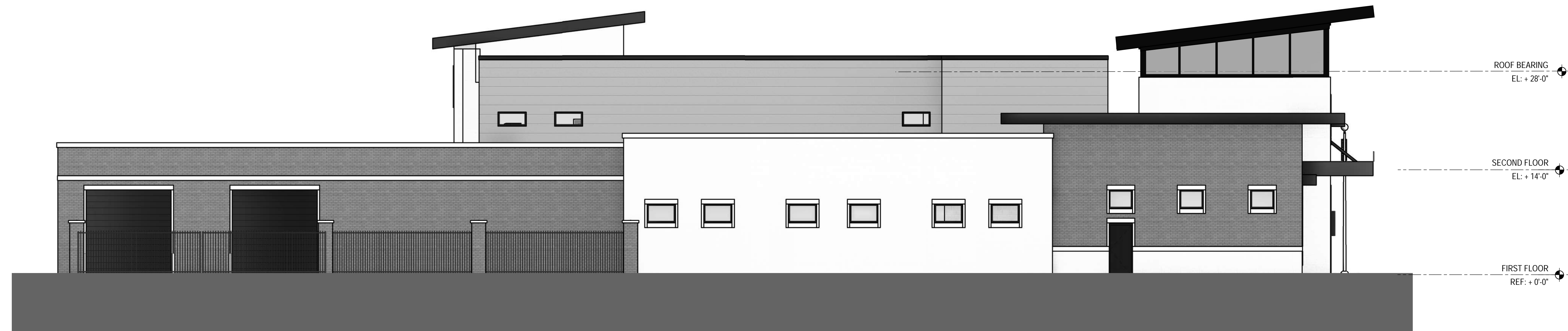
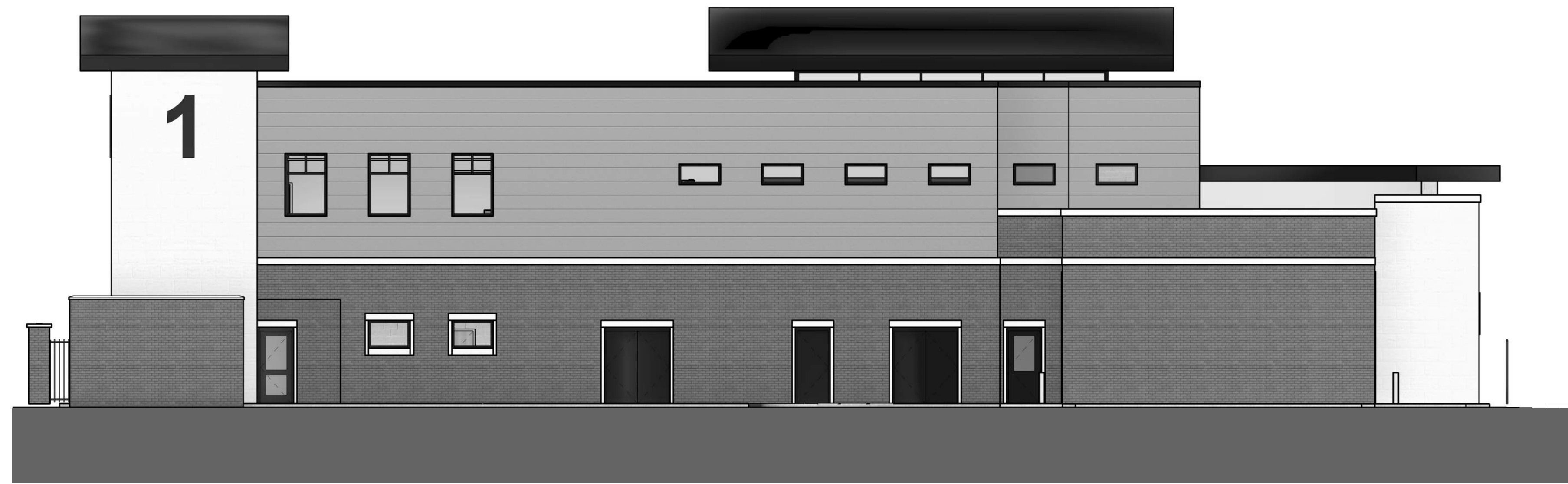
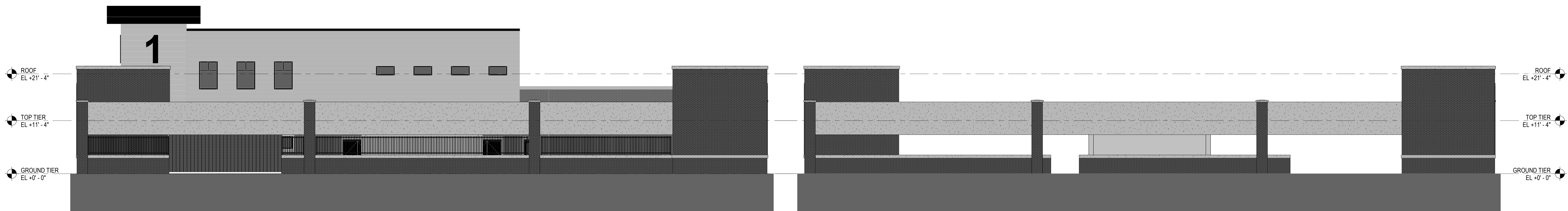
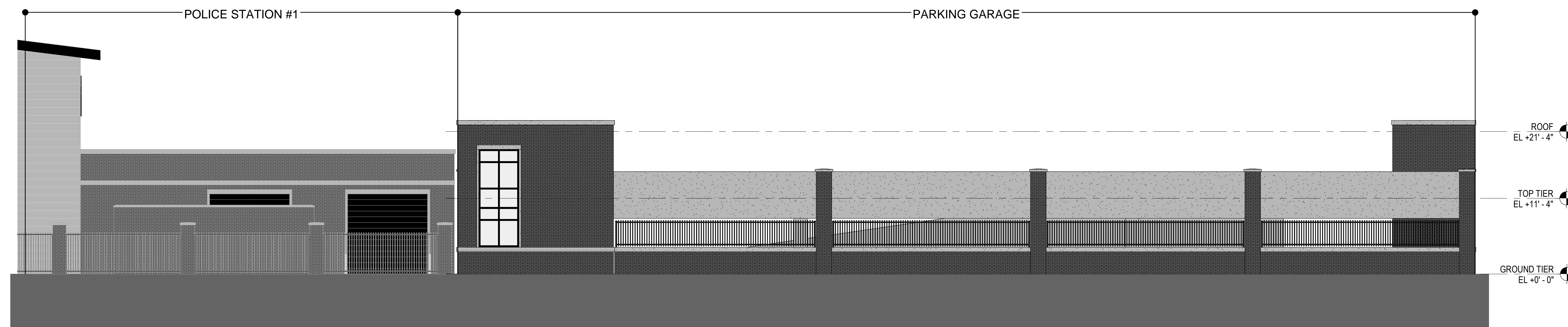
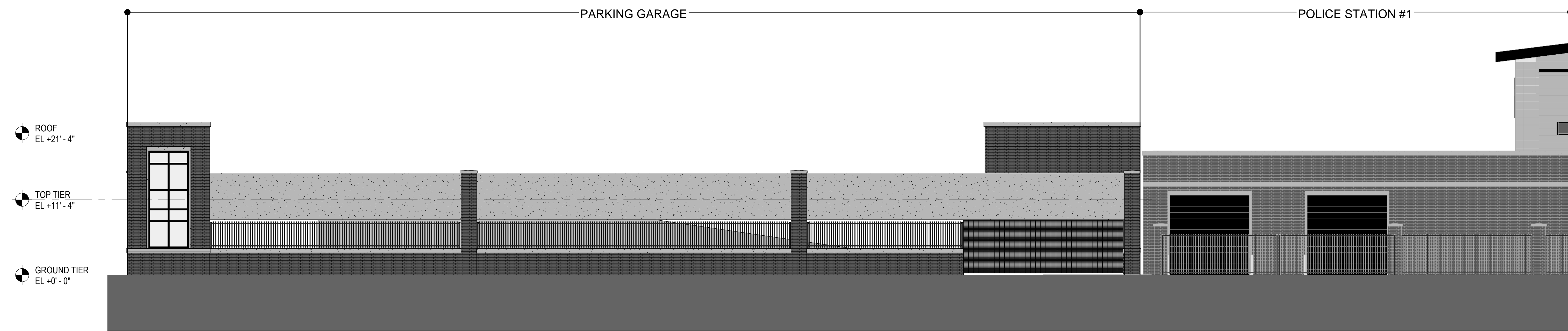


City of Richmond: New Police Station #1



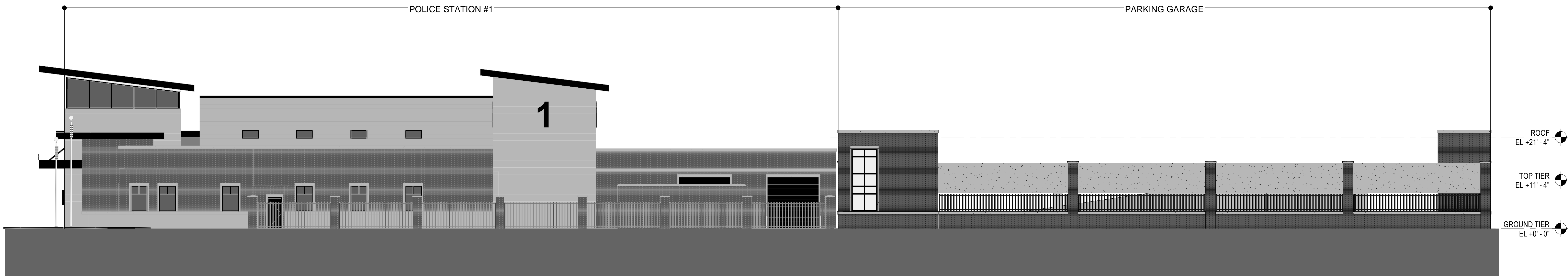
Proposed Building Design Concept - Overall 2D Exterior Views

City of Richmond: New Police Station #1



Proposed Building Design Concept - Overall 2D Exterior Views

City of Richmond: New Police Station #1



Proposed Building Design Concept - Overall 2D Exterior Views

City of Richmond: New Police Station #1



EXAMPLE:
 - BRICK
 - LARGE FORMAT CAST STONE
 - CAST STONE WATER TABLE



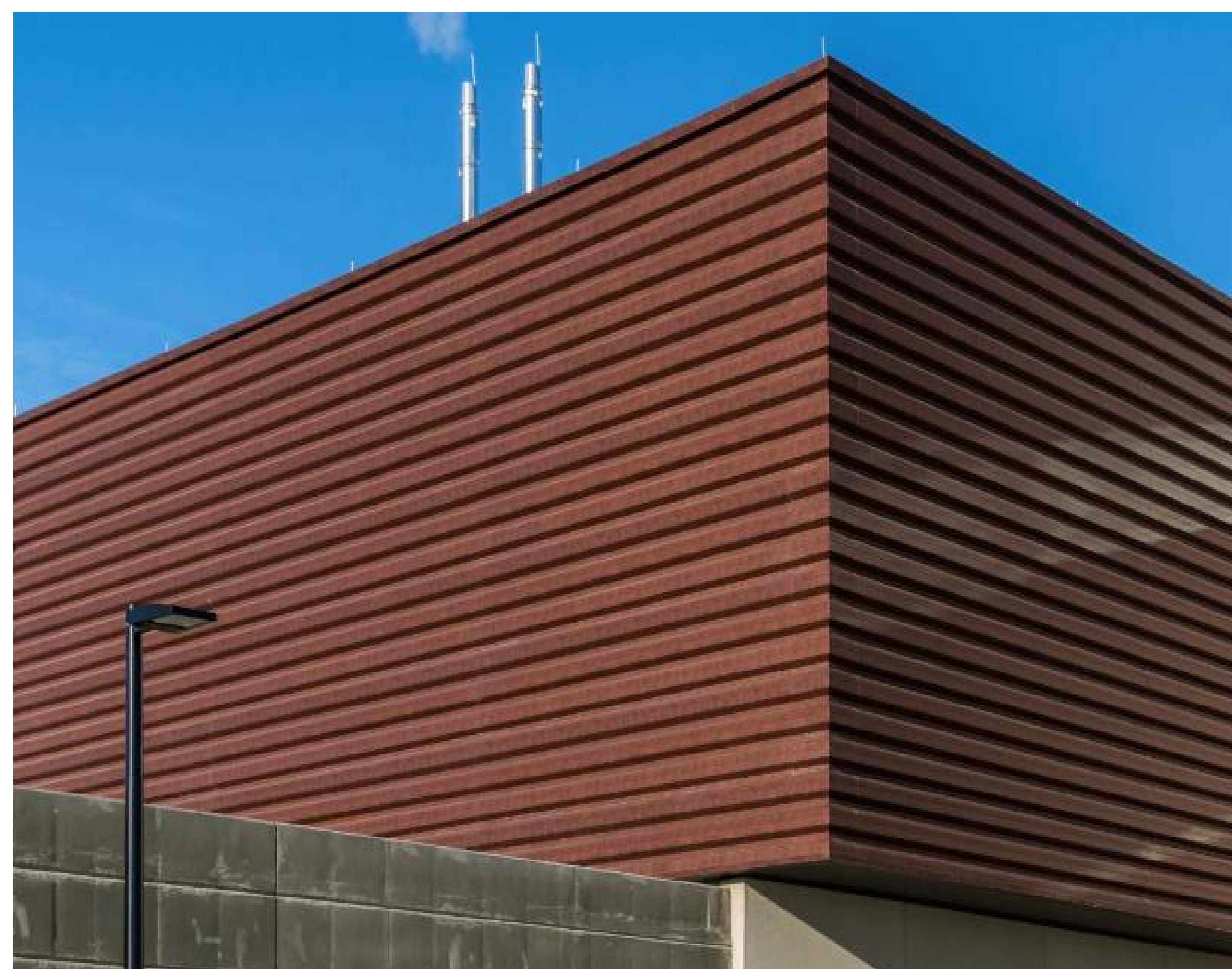
EXAMPLE:
 - LARGE FORMAT CAST STONE
 - PREFINISHED ALUMINUM COMPOSITE PANEL CANOPY SYSTEM



EXAMPLE:
 - BRICK
 - CAST STONE WATER TABLE
 - CAST STONE JAMBS, HEADERS & ARCHES
 - CAST STONE WALL CAPS.



EXAMPLE:
 - BRICK
 - PREFINISHED ALUMINUM CANOPY SYSTEM



EXAMPLE:
 - PREFINISHED ARCHITECTURAL METAL WALL PANEL SYSTEM
 - PREFINISHED ARCHITECTURAL METAL COPING SYSTEM



EXAMPLE:
 - PREFINISHED ALUMINUM COMPOSITE PANEL CANOPY SYSTEM
 - PREFINISHED ALUMINUM COMPOSITE PANEL ROOF SYSTEM
 - PREFINISHED ALUMINUM STOREFRONT FRAMING SYSTEM

Inspirational Images

City of Richmond: New Police Station #1



- (A) ARCHITECTURAL BRICK VENEER SYSTEM
- (B) ARCHITECTURAL PRECAST CONCRETE BASE SYSTEM
- (C) PREFINISHED ALUMINUM COMPOSITE PANELS & CANOPY SYSTEM
- (D) TINTED, HIGH PERFORMANCE INSULATED GLAZING IN THERMALLY BROKEN ALUMINUM STOREFRONT FRAMING SYSTEM
- (E) PREFINISHED ARCHITECTURAL METAL WALL PANEL SYSTEM
- (F) PREFINISHED ARCHITECTURAL METAL COPING SYSTEM
- (G) DECORATIVE ARCHITECTURAL LIGHTING
- (H) DIMENSIONAL BACK-LIT SIGNAGE SYSTEM

Conceptual Design - Proposed Exterior Building Materials

City of Richmond: New Police Station #1



Conceptual Design - Proposed Exterior Building Materials

City of Richmond: New Police Station #1



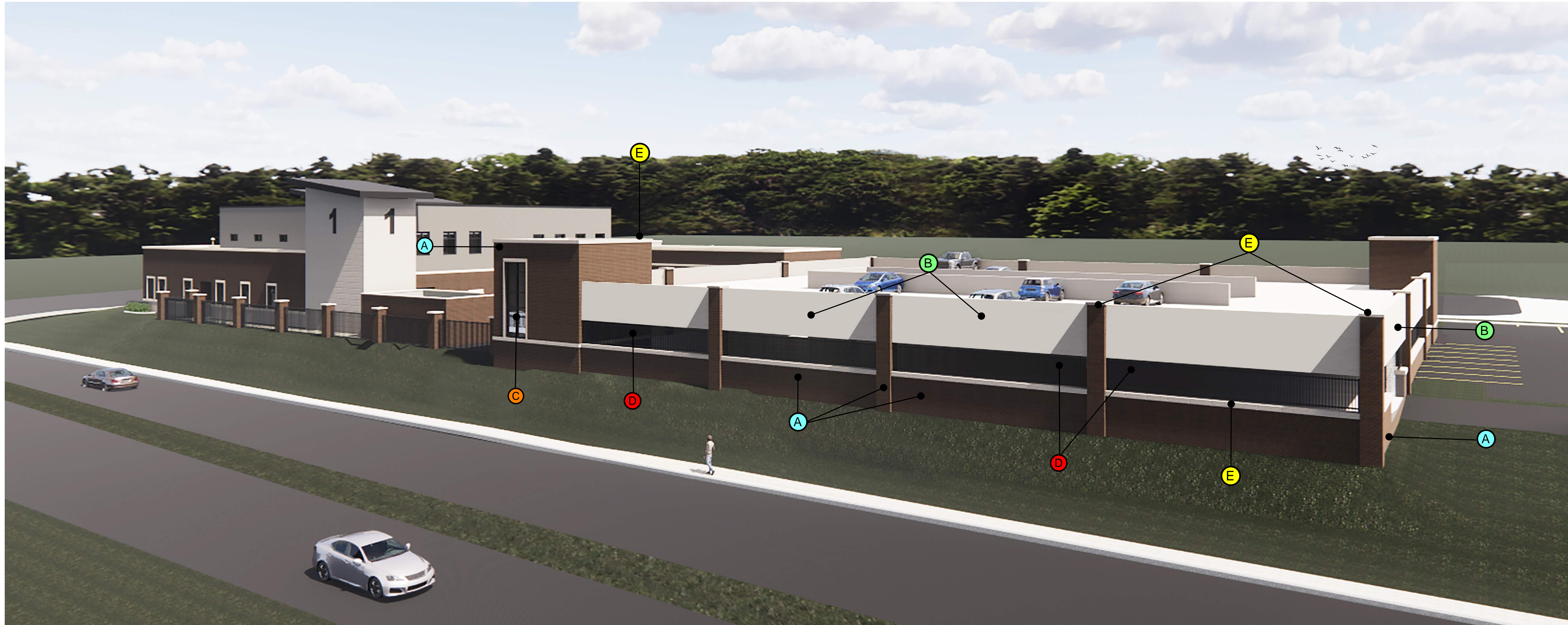
Conceptual Design - Exterior View of Main Entrance (from main property entrance at Fairview Way)

City of Richmond: New Police Station #1



Conceptual Design - Exterior View along Oliver Hill Way (View of Police Vehicle Secured Entrance)

City of Richmond: New Police Station #1



- (A)** ARCHITECTURAL BRICK VENEER SYSTEM
- (B)** ARCHITECTURAL PRECAST CONCRETE SYSTEM
- (C)** TINTED, HIGH PERFORMANCE INSULATED GLAZING IN THERMALLY BROKEN ALUMINUM STOREFRONT FRAMING SYSTEM
- (D)** ARCHITECTURAL METAL FENCING SYSTEM
- (E)** ARCHITECTURAL PRECAST CONCRETE CAP

Conceptual Design - Proposed Exterior Building Materials

City of Richmond: New Police Station #1



Conceptual Design - Proposed Exterior Building Materials