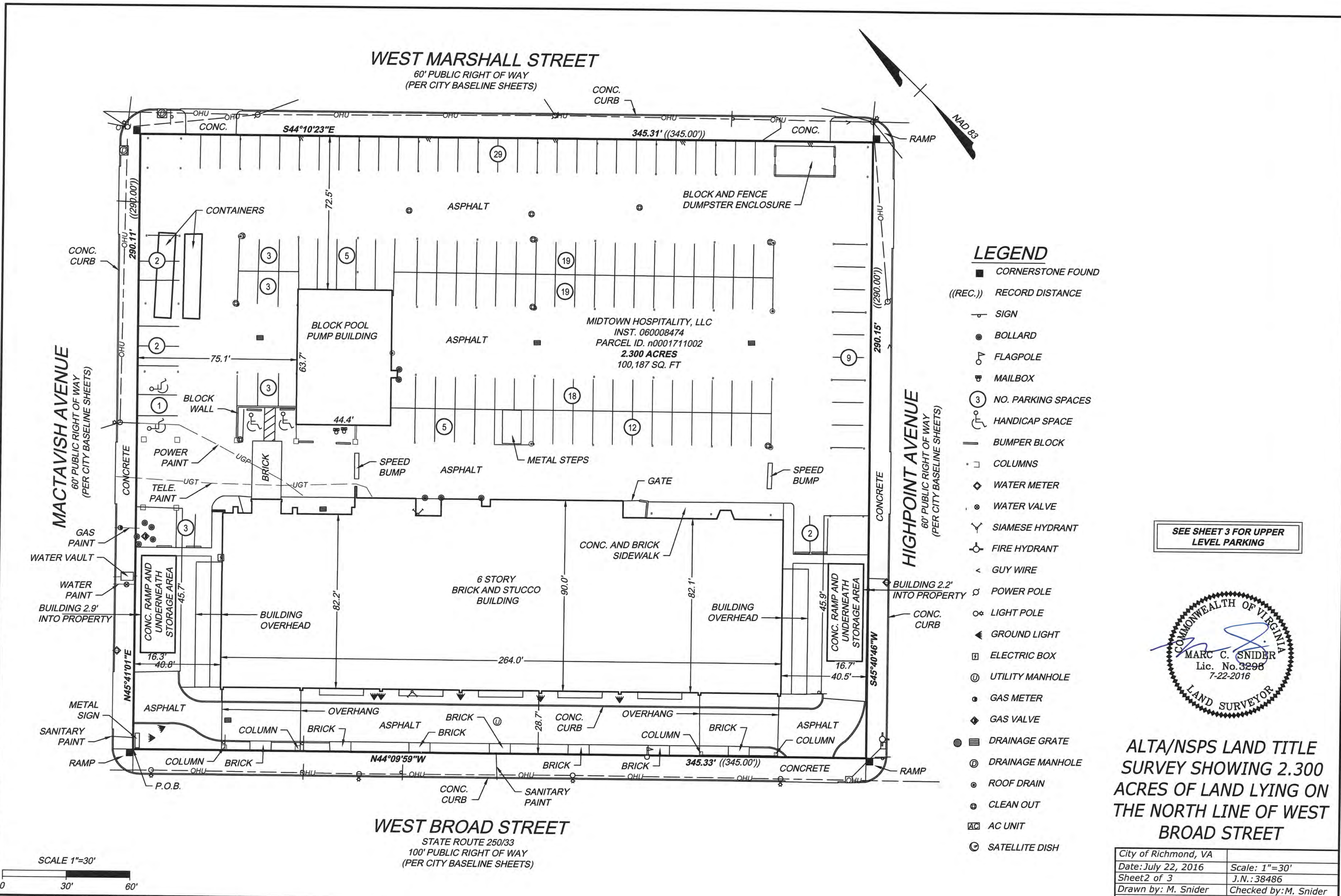


Y:\138486-3200\_W.Broad\DWG\38486V-XPSURV.dwg | Plotted on 9/14/2016 10:31 AM | by Marc Snider



- LEGEND**
- CORNERSTONE FOUND
  - ((REC.)) RECORD DISTANCE
  - SIGN
  - BOLLARD
  - FLAGPOLE
  - ✉ MAILBOX
  - ③ NO. PARKING SPACES
  - ♿ HANDICAP SPACE
  - BUMPER BLOCK
  - COLUMNS
  - ◆ WATER METER
  - WATER VALVE
  - Y SIAMESE HYDRANT
  - ⊕ FIRE HYDRANT
  - < GUY WIRE
  - ⊕ POWER POLE
  - ⊕ LIGHT POLE
  - ▲ GROUND LIGHT
  - ⊠ ELECTRIC BOX
  - ⊕ UTILITY MANHOLE
  - GAS METER
  - ◆ GAS VALVE
  - ⊕ DRAINAGE GRATE
  - ⊕ DRAINAGE MANHOLE
  - ROOF DRAIN
  - CLEAN OUT
  - ⊠ AC UNIT
  - ⊕ SATELLITE DISH

SEE SHEET 3 FOR UPPER LEVEL PARKING



**ALTA/NSPS LAND TITLE SURVEY SHOWING 2.300 ACRES OF LAND LYING ON THE NORTH LINE OF WEST BROAD STREET**

City of Richmond, VA	
Date: July 22, 2016	Scale: 1"=30'
Sheet 2 of 3	J.N.: 38486
Drawn by: M. Snider	Checked by: M. Snider
Revised:	

**TIMMONS GROUP**

THIS DRAWING PREPARED AT THE  
CORPORATE OFFICE  
1001 Boulders Parkway, Suite 300 | Richmond, VA 23225  
TEL 804.200.6500 FAX 804.560.1016 www.timmons.com

YOUR VISION ACHIEVED THROUGH OURS.

