

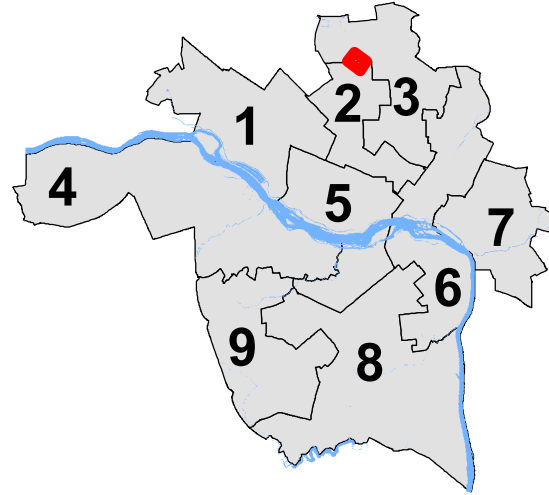
City of Richmond Department of Planning & Development Review

Location, Character, and Extent

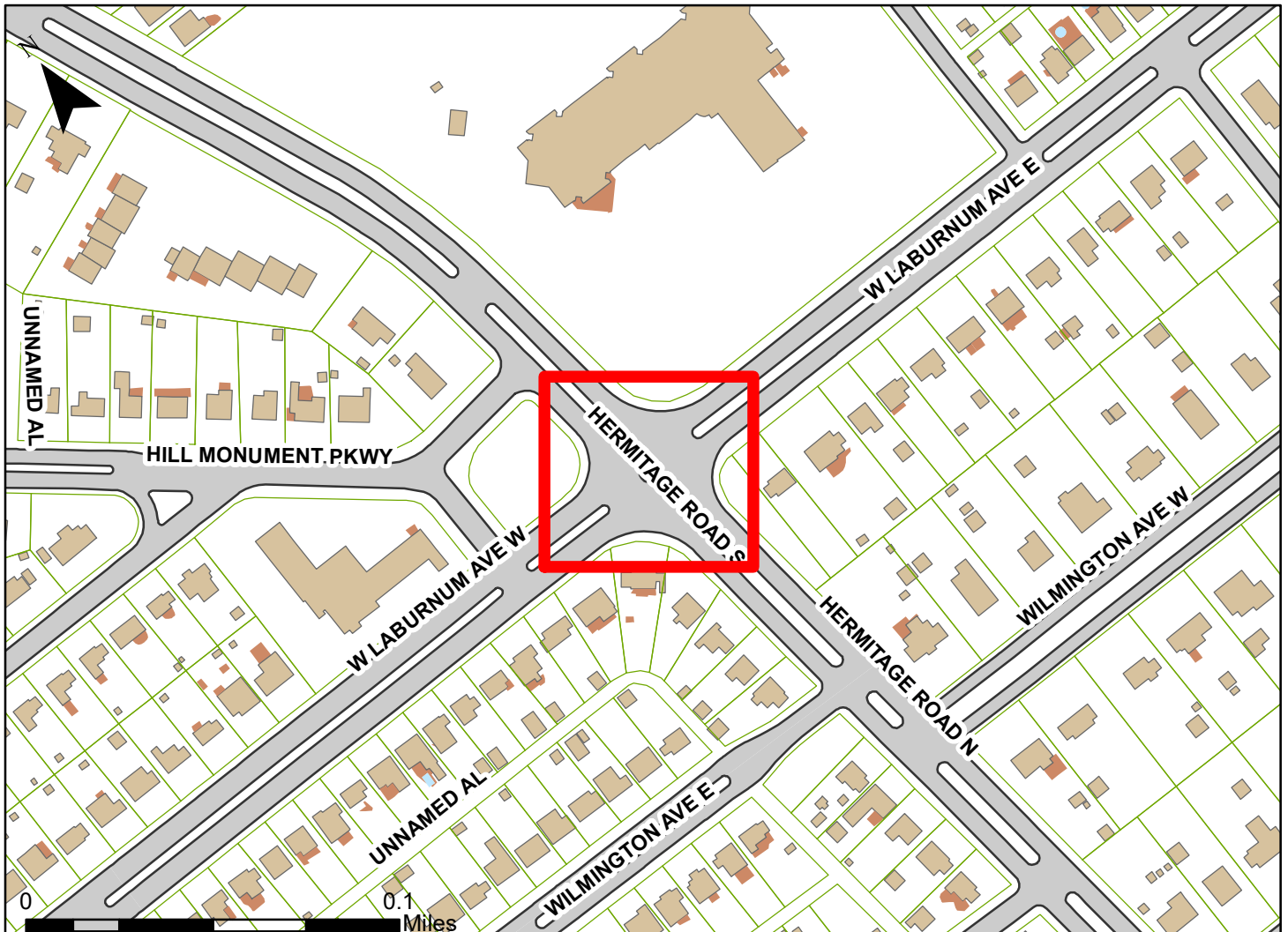
LOCATION: Intersection of Hermitage Rd. and Laburnum Ave.

COUNCIL DISTRICT: 3

PROPOSAL: Review of the removal of a monument, pedestal, and remains.



*For questions, please contact Alex Dandridge
at 646-6569 or alex.dandridge@richmondgov.com*





Application for Urban Design Committee Review

Department of Planning and Development Review

Planning & Preservation Division

900 E. Broad Street, Room 510

Richmond, Virginia 23219 | (804) 646-6335

<https://www.rva.gov/planning-development-review/urban-design-committee>



Application Type (select one)

Location, Character, & Extent

Section 17.05

Other:

Encroachment

Design Overlay District

Review Type (select one)

Conceptual

Final

Project Information

Submission Date: 5/13/2021

Project Name: AP Hill

Project Address: Laburnum Ave and Hermitage Rd intersection

Brief Project Description (this is not a replacement for the required detailed narrative):

Location, Character, and Extent review of the ability to remove the monument and temporary replacement landscape and materials for continuity of streetscape, traffic flow, and health and human safety.

Applicant Information (a City representative must be the applicant, with an exception for encroachments)

Name: Christopher Frelke

Email: Christopher.Frelke@richmondgov.com

City Agency: Department of Parks, Recreation and Community Facilities

Phone: (804)646-1128

Main Contact (if different from Applicant): _____

Company: _____

Phone: _____

Email: _____

Submittal Deadlines

All applications and support materials must be filed no later than 21 days prior to the scheduled meeting of the Urban Design Committee (UDC). Please see the schedule on page 3 as actual deadlines are adjusted due to City holidays. **Late or incomplete submissions will be deferred to the next meeting.**

Filing

Applications can be mailed or delivered to the attention of "Urban Design Committee" at the address listed at the top of this page. **It is important that the applicant discuss the proposal with appropriate City agencies, Zoning Administration staff, and area civic associations and residents prior to filing the application with the UDC.**

Submittal Deadlines

The UDC is an 11 member committee created by City Council in 1968 whose purpose is to advise the City Planning Commission (CPC) on the design of projects on City property or right-of-way. The UDC provides advice of an aesthetic nature in connection with the performance of the duties of the Commission under Sections 17.05, 17.06, and 17.07 of the City Charter. The UDC also advises the Department of Public Works in regards to private encroachments in the public right-of-way.

last revised 12/21/2020

Property

Address: A.P. Hill Monument, Laburnum Avenue and Hermitage Road, Richmond VA 23227
Historic District: Hermitage Road
Parcel ID: N/A

Applicant Information

Name: Christopher Frelke
Company: City of Richmond, Department of Parks, Recreation and Community Facilities
Mailing Address: 1209 Admiral Street, Richmond VA 23220
Phone: (804)646-1128
Email: Christopher.Frelke@richmondgov.com
Applicant Type: Owner

Project Information

Project Type: Location, Character and Extent - Final Review
Project Narrative:

Purpose:

On behalf of the City of Richmond and in accordance with [Ord. 2020-154](#), the Department of Parks, Recreation, and Community Facilities requests a final location, character and extent review for permission for the ability to remove a monument, pedestal, and remains from the Hermitage Road City Old and Historic District. The AP Hill Monument located at the intersection of W. Laburnum and Hermitage Rd is an asset of the Department of Parks, Recreation and Community Facilities.

Process Background:

This application is based on the Department of Historic Resources (DHR) "Guidance Regarding Confederate Monuments." Per [Section 15.2-1812 of the Code of Virginia](#) (effective July 1, 2020), the General Assembly has granted authority to the City Council to decide upon the future location/receivership of these City assets; therefore, this application for review does not speculate where any of these assets may or should end up. Further, beyond providing what the temporary restoration of each site could look like upon removal to maintain health, human safety, traffic flow, and landscape continuity, this application does not propose what should exist on these sites in the future.

Justification for this application for review is further rooted in the City Charter and the City Code. Code §30-100 outlines the purposes of the zoning ordinance. The ability to remove the monument and pedestal will (3) Promote health, sanitation and general welfare, as well as (7) Facilitate the creation of a convenient, attractive and harmonious community. Code §30-930.2 (4) outlines the purposes of City Old and Historic Districts. Ability to remove the monument and pedestal will provide for (4) The enhancement of the quality of life for residents. Charter § 2.04 of the Charter provides the City power to make regulations for the preservation of the morals of the city and its inhabitants. The representation of white supremacy and the legacy of slavery in prominent public places through this monument is of questionable morality. Charter § 2.04 of the

Charter provides the City power to prevent riots, disturbances, and disorderly assemblages. Based on the events of the last year, and similar events in other cities, the ability to remove monuments and pedestals could be considered such a prevention effort.

This monument is currently under consideration for a Certificate of Appropriateness for removal by the Commission of Architectural Review (scheduled as part of the May 25, 2021 meeting agenda, as of the submission of this application).

Site Background:

The AP Hill Monument was erected at the intersection of Hermitage Road and Laburnum Ave in 1892, and sits among the Bellevue, Laburnum Park and Rosedale neighborhoods in the 3rd City Council District directly adjacent to Linwood Holton Elementary School. The intersection has been one of the top 5 vehicular accident locations in the City of Richmond over the past 20 years according to the Virginia Department of Transportation.

The AP Hill Monument is a burial site and contains at least partial human remains of General AP Hill. This is the third documented site of AP Hill's remains, prior to the construction of this monument his remains were buried at Hollywood Cemetery. The City of Richmond will proceed with the appropriate permitting with the Department of Historic Resources for the excavation and relocation of human remains should permission for the ability to remove this monument be deemed appropriate. Further, the City has remained in contact with the descendants of General AP Hill and intends to honor their wishes regarding a final resting place for the remains.

The site plans attached show the removal of the monument and the replacement of the space in the center of the intersection with asphalt.

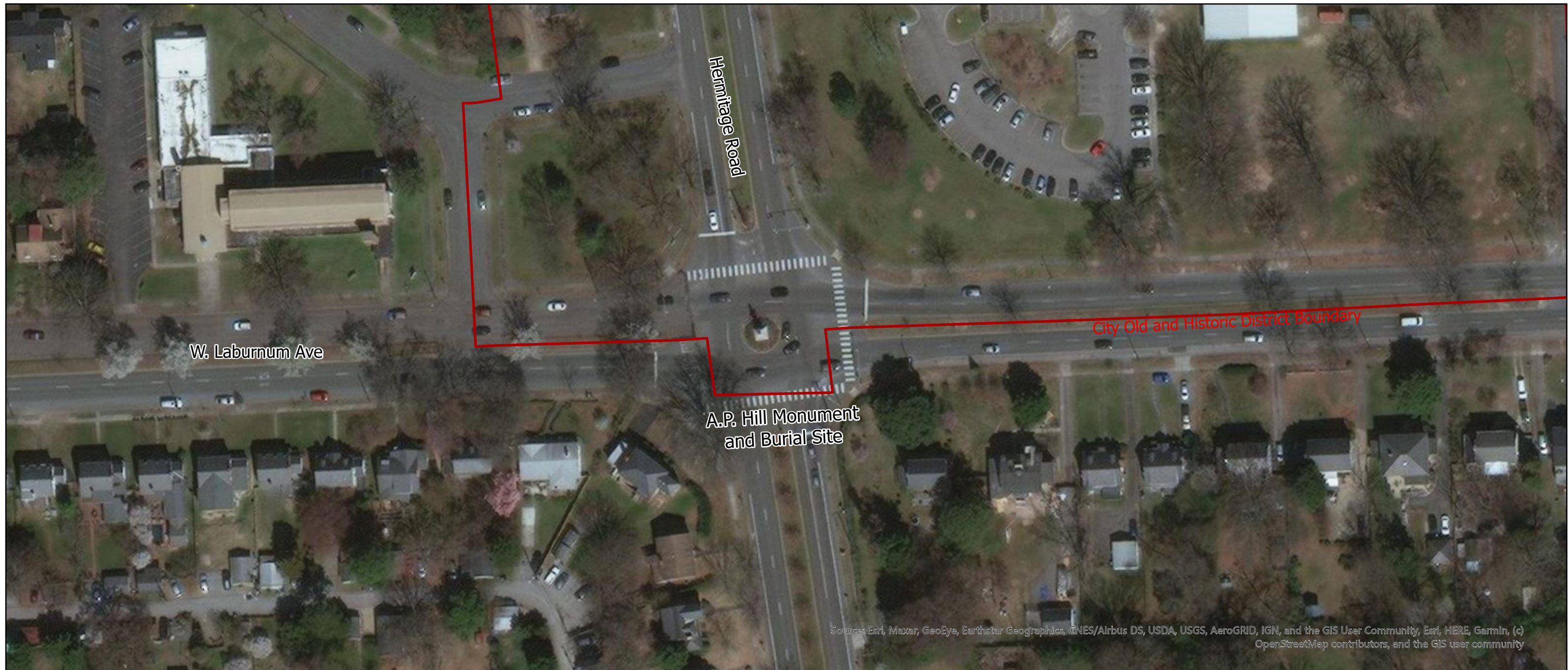
Attachments:

Attachment 1, Site Map, shows the existing condition of the site including an aerial view map with City Old and Historic District Boundaries, and pictures of the monument and pedestal from the North, South, East and West as of 4/21/21.

Attachment 2, VHB Site Plans, page 4 shows suggestions for the *temporary* restoration of the site including site plans and landscaping selections

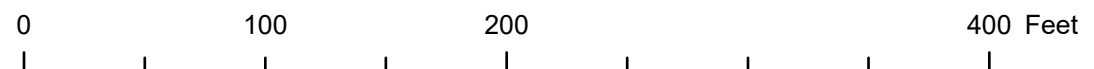
Attachment 3, Cost Basis, Tab 1, provides a cost basis for temporary restoration items described in attachment 2

Attachment 4, Disassembly Considerations, prepared by Paul DiPasquale provides technical construction considerations should removal proceed in the future



A.P. Hill

Hermitage Road City Old & Historic District





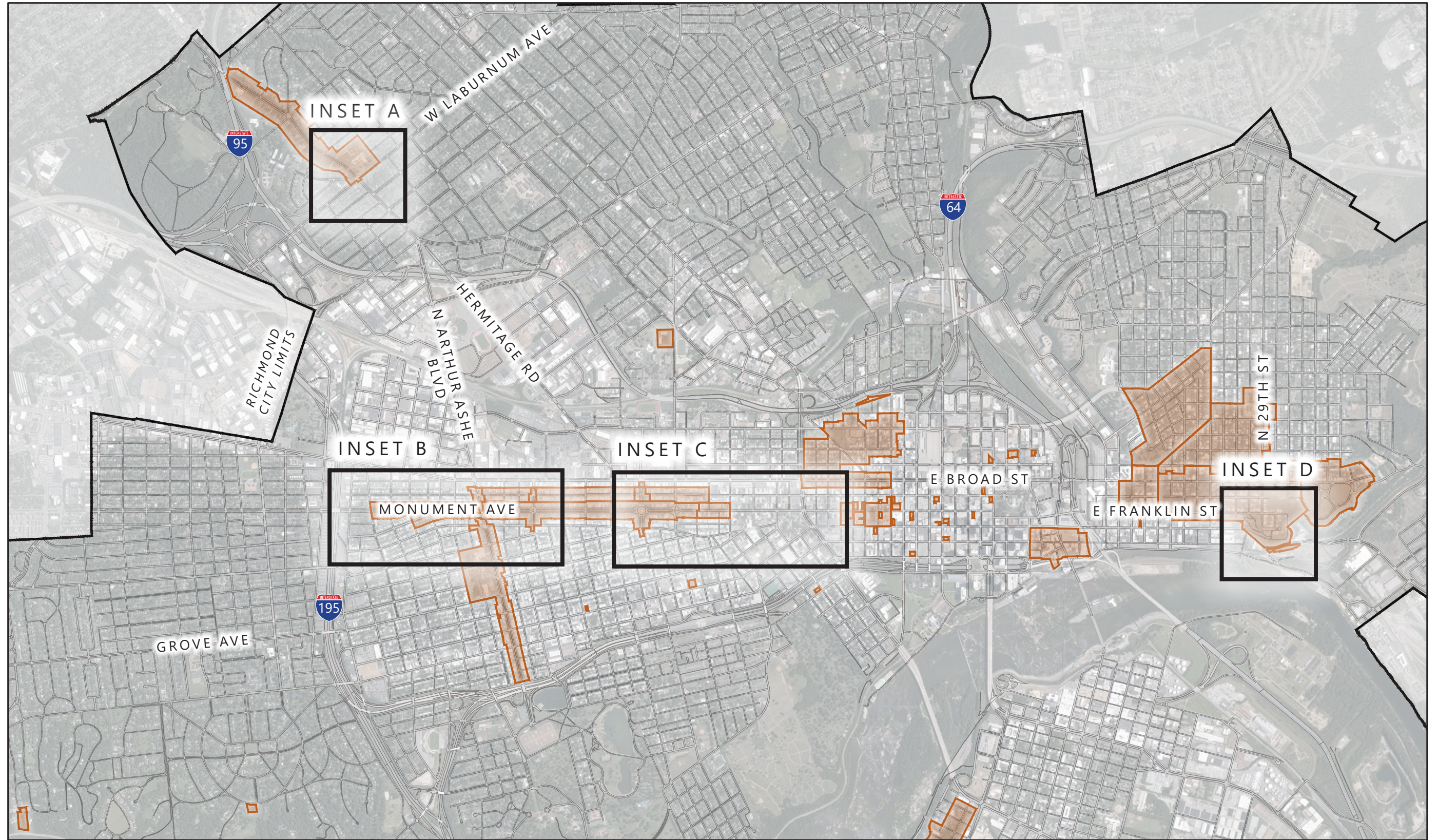
Monument Removal and Temporary Restoration

Richmond, Virginia


May 2021



Monument Locations

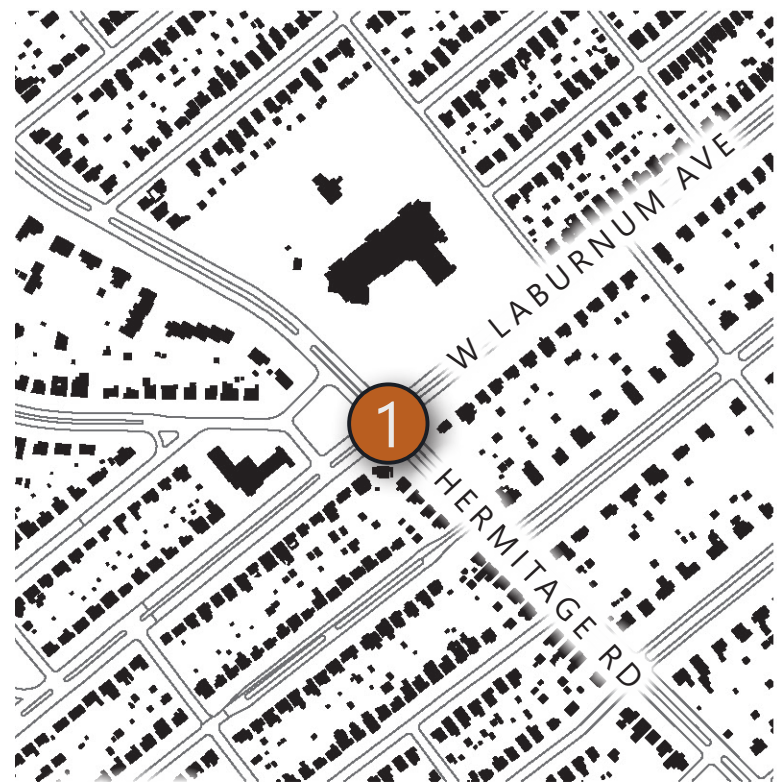


LEGEND

 Old and Historic Districts

SCALE IN FEET





INSET A



INSET B





INSET C

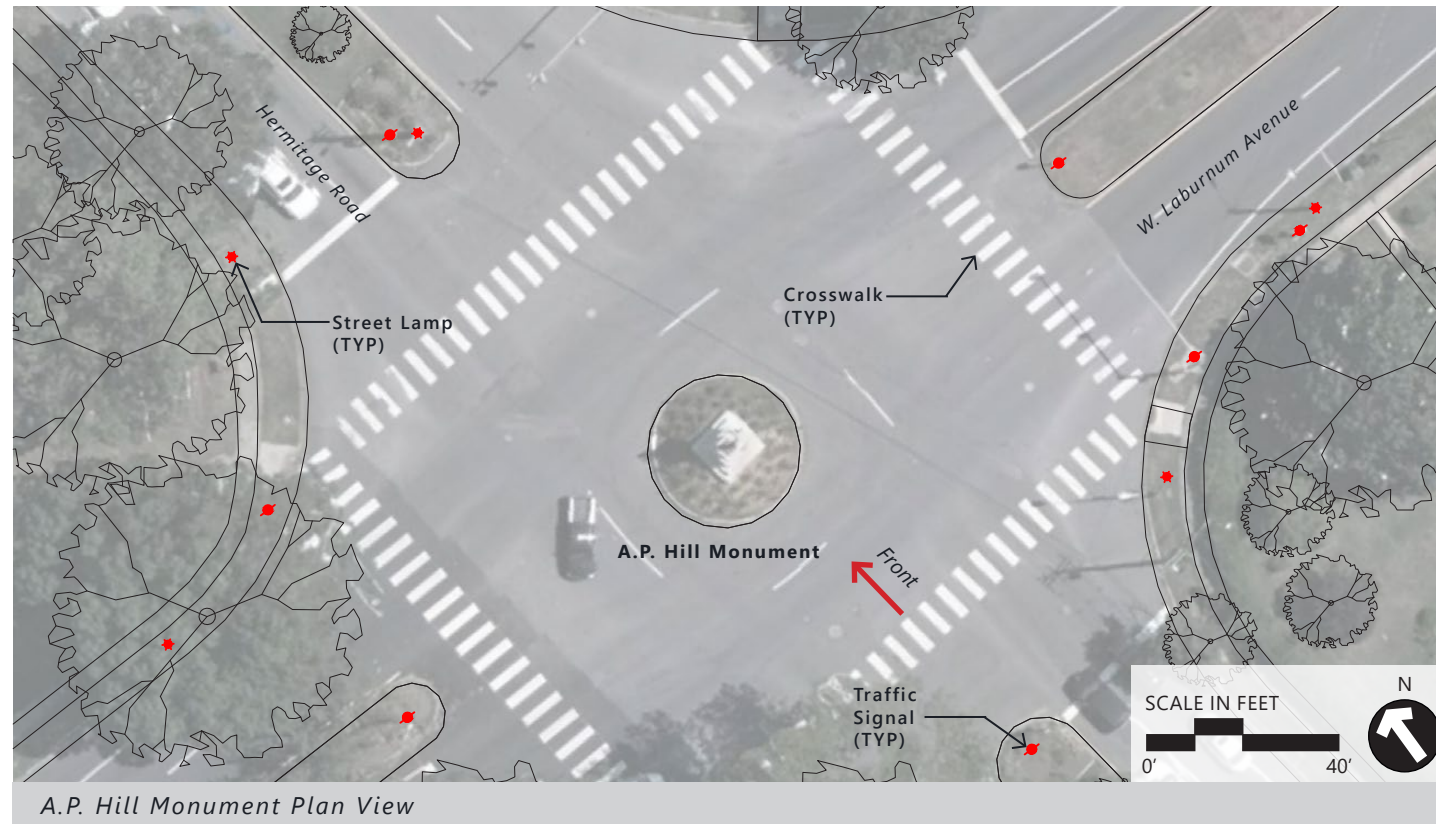


INSET D

- | | | | | | |
|---|----------------------------|--|---|---|----------------------------------|
|  | A.P. Hill Monument |  | Confederate Cannon #1 |  | Confederate Cannon #2 |
|  | Matthew F. Maury Monument |  | J.E.B. Stuart Monument |  | Fitzhugh Lee Monument |
|  | Stonewall Jackson Monument |  | Confederate Soldiers and Sailors Monument |  | Joseph Bryan Monument |
|  | Jefferson Davis Monument | | |  | Williams Carter Wickham Monument |

 Monuments Within City's Old and Historic Districts
 Monuments Outside City's Old and Historic Districts





A.P. Hill Monument Plan View



Removal and Temporary Restoration Sketch

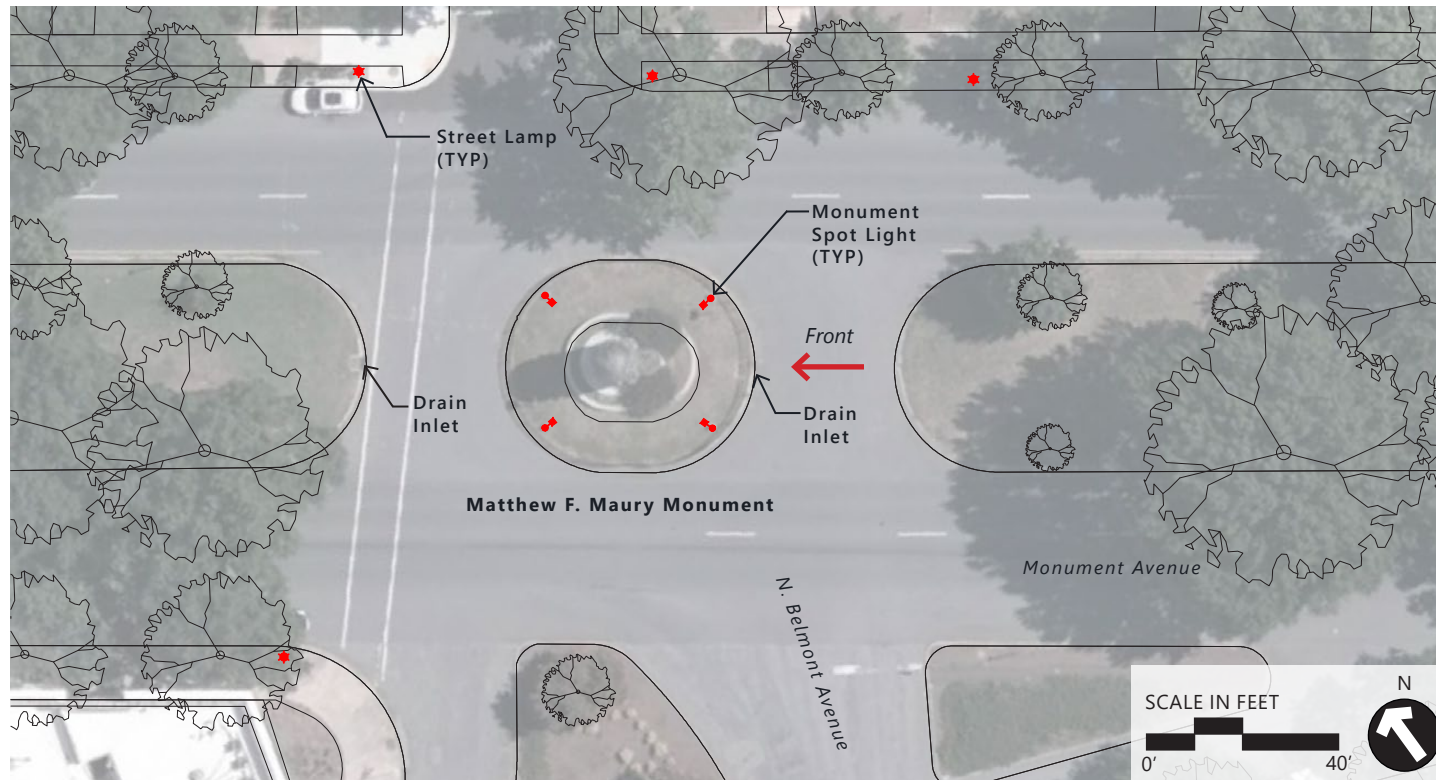


A.P. Hill Monument

GENERAL NOTES

1. Removal of the stone associated with the monument is not part of this document and will be addressed separately.
2. Existing median infrastructure to be completely removed and the area paved with asphalt.

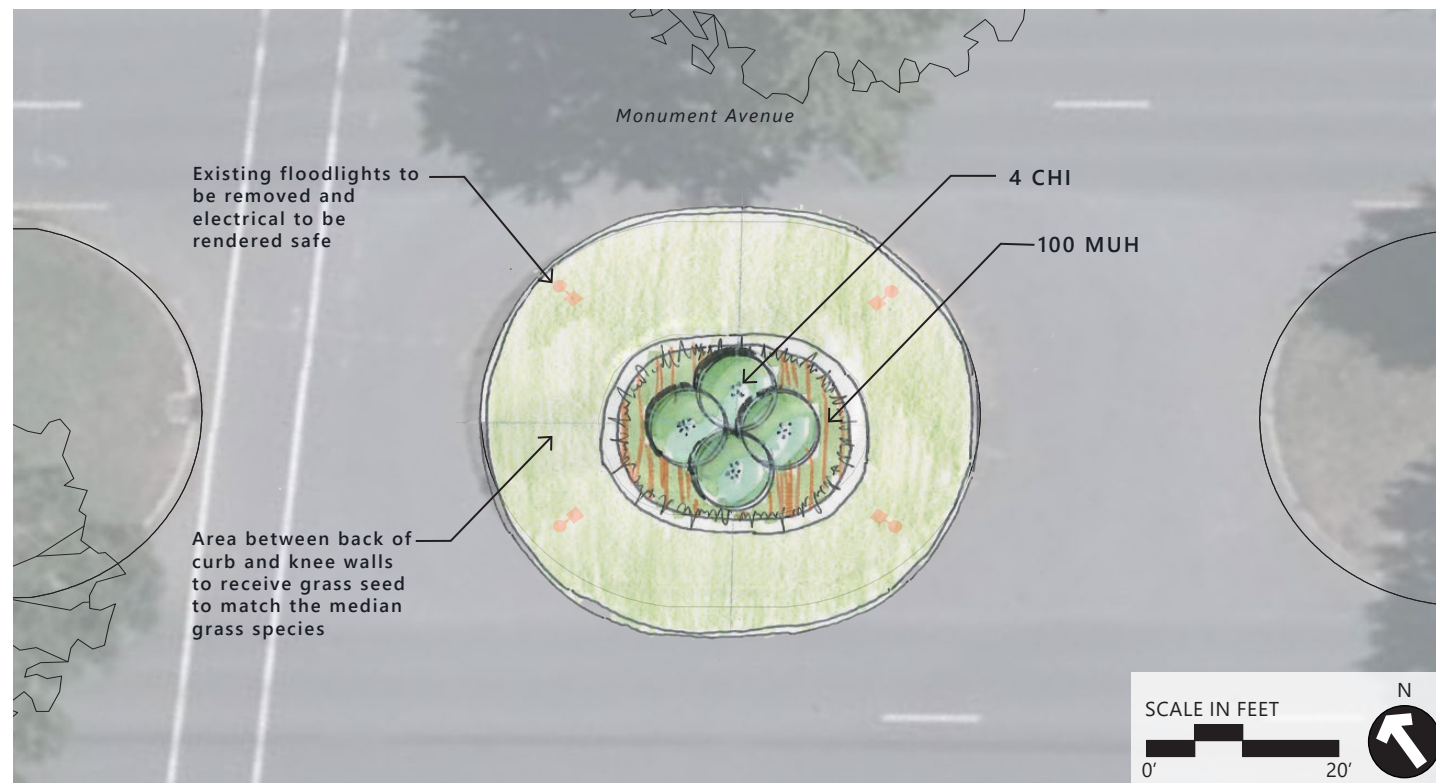
Plant List and General Notes



Matthew F. Maury Monument Plan View



Matthew F. Maury Monument



Removal and Temporary Restoration Sketch

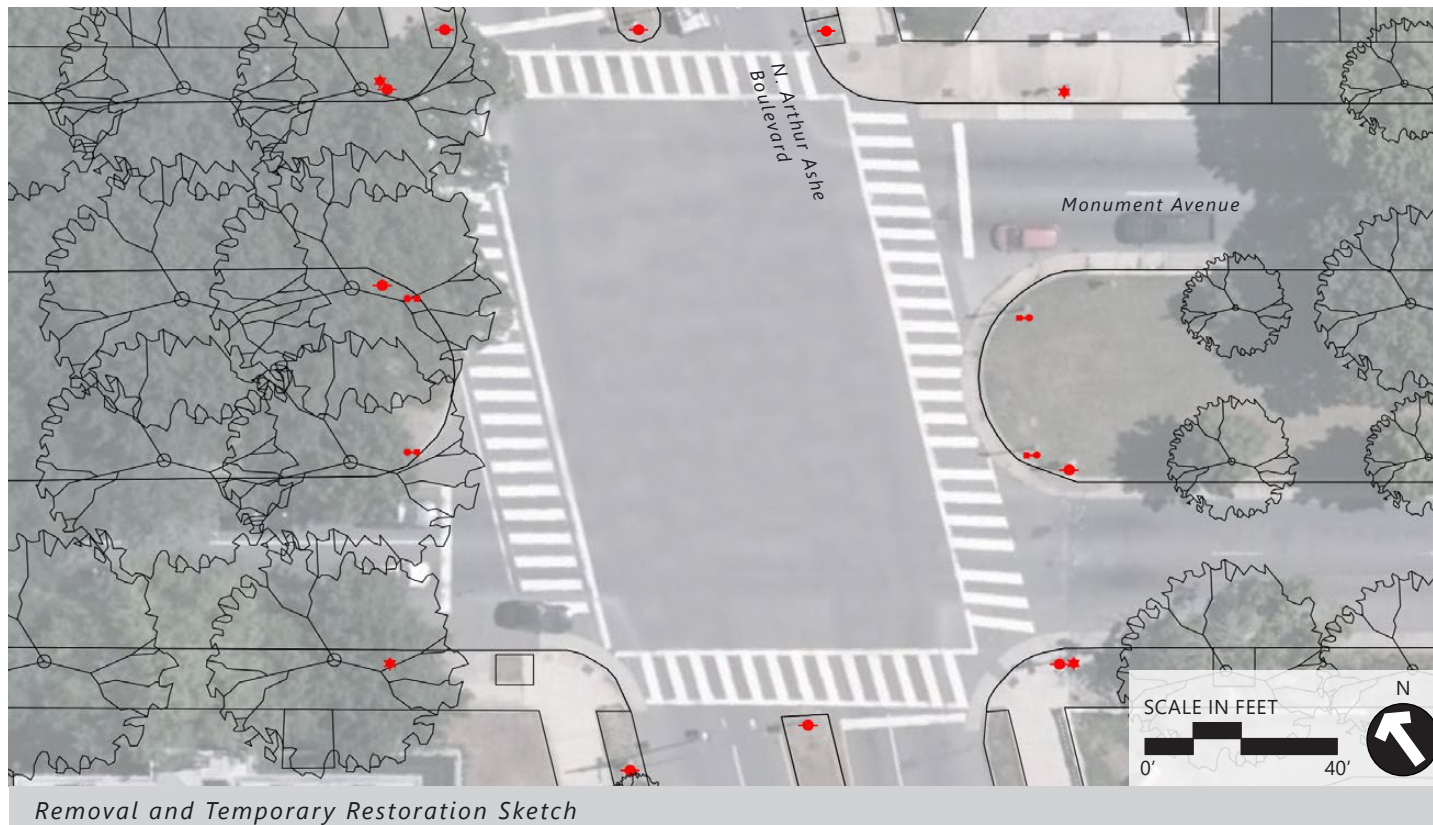
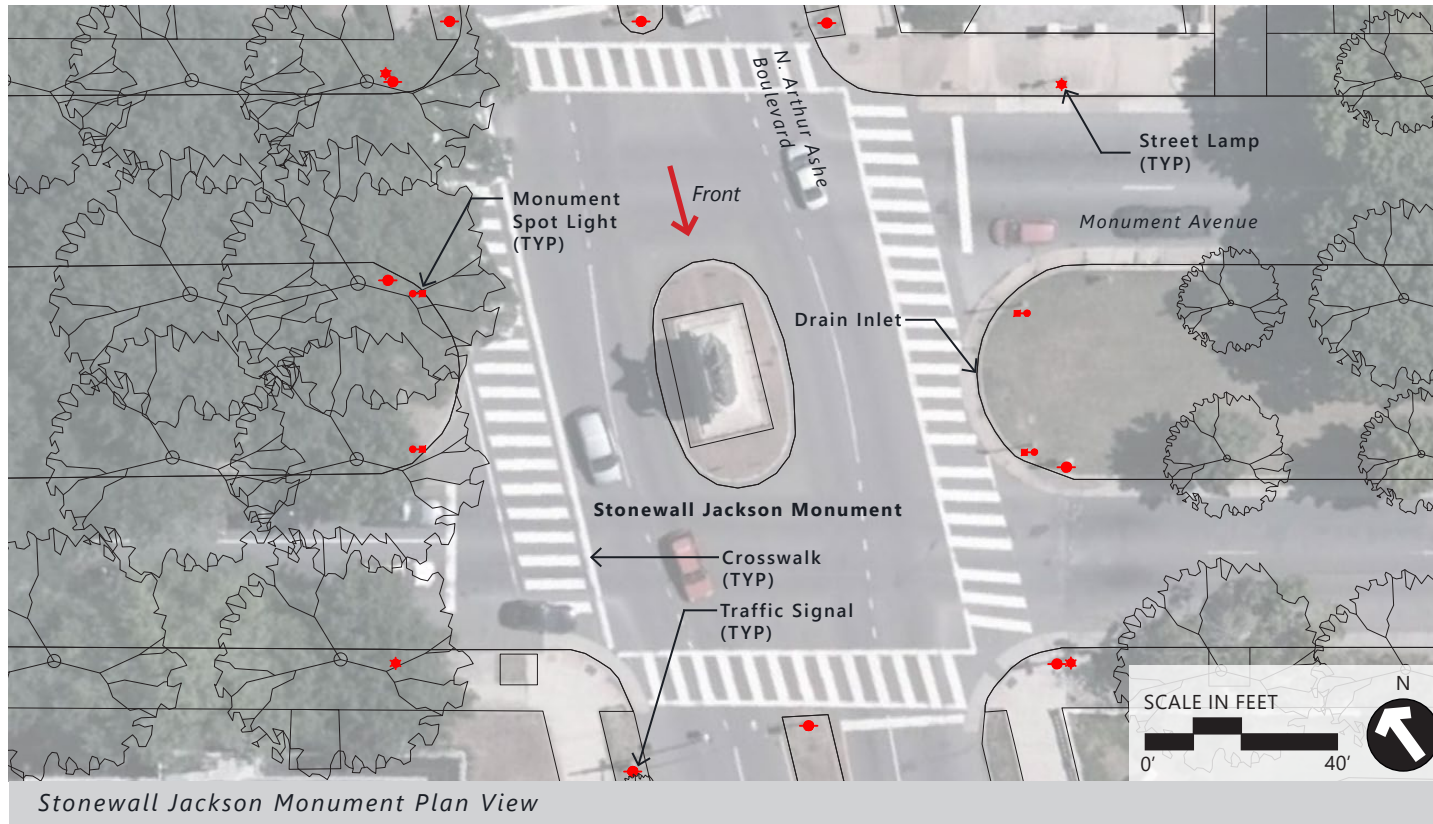
GENERAL NOTES

1. Removal of the stone associated with the monument is not part of this document and will be addressed separately.
2. The small retaining wall stone to remain in place and the monument and base stones to be removed.
3. Grading of the disturbed area should direct rain runoff over the curb and into the roadway stormwater system.
4. Existing light fixtures focused on the former monuments will be turned off and removed or replaced with pedestrian scale lighting as appropriate to the location.

PLANT LIST

Symbol	Qty	Botanical Name	Common Name	Specification
Large Shrubs				
CHI	4	Chionanthus virginicus	White Fringetree	5' Ht., 3'-4' Spr., Multi Stem, As shown
Grasses				
MUH	100	Muhlenbergia capillaris	Pink Muhly Grass	#1, 12" x 8", 24" o.c.

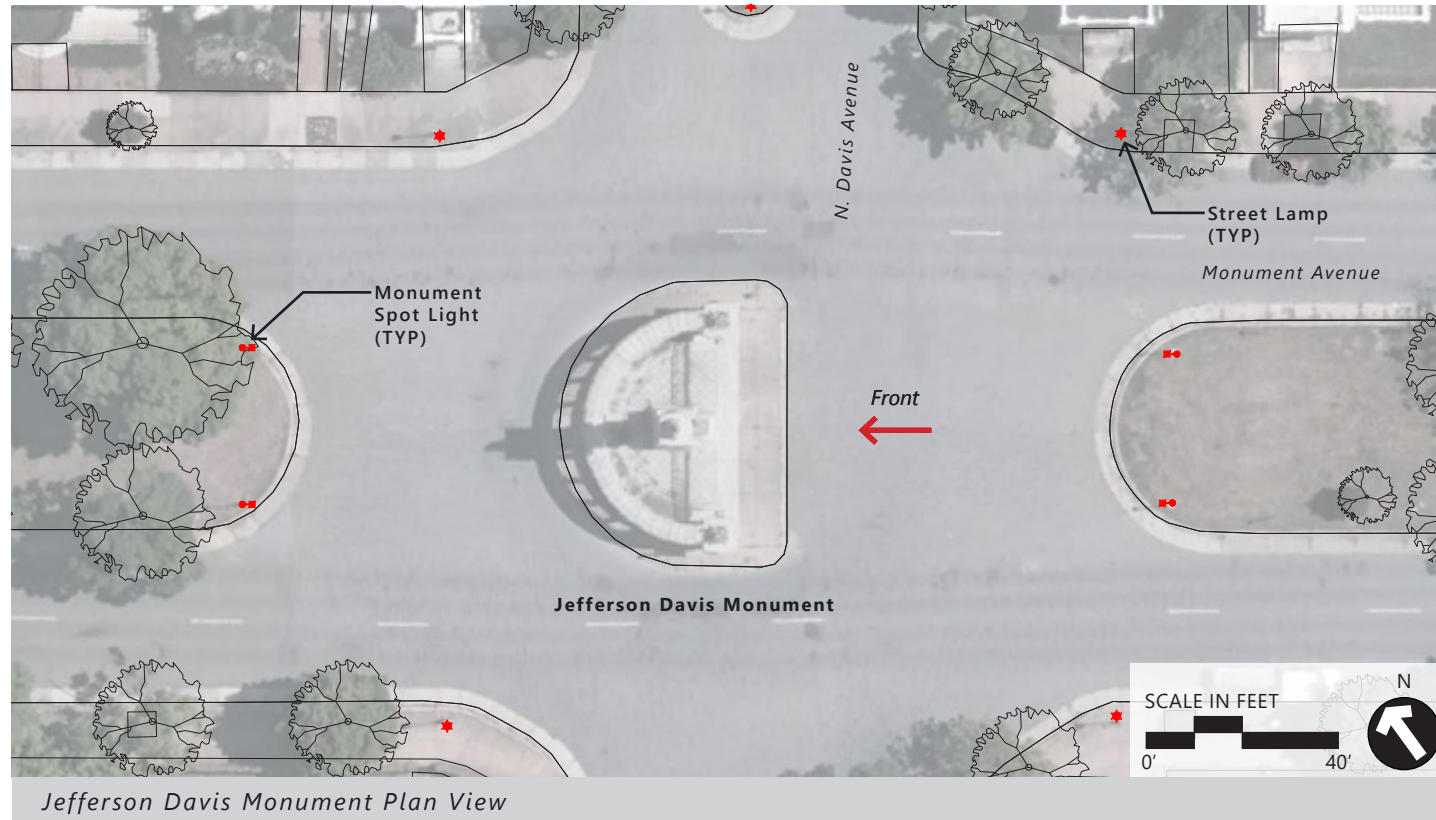
Plant List and General Notes



GENERAL NOTES

1. Removal of the stone associated with the monument is not part of this document and will be addressed separately.
2. Existing median infrastructure to be completely removed and the area paved with asphalt.
3. Existing light fixtures focused on the former monuments will be turned off and removed or replaced with pedestrian scale lighting as appropriate to the location.

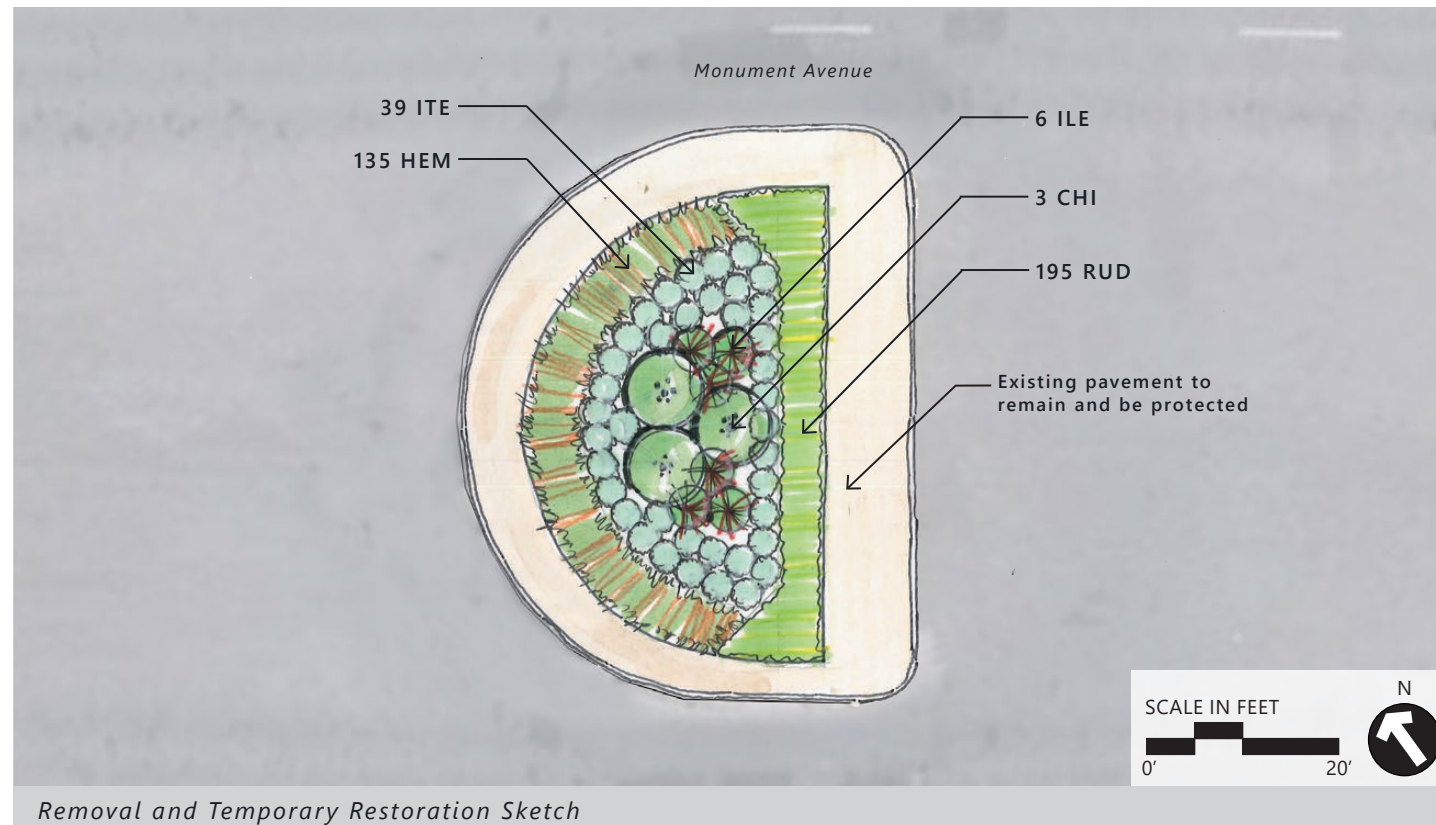
Plant List and General Notes



Jefferson Davis Monument Plan View



Jefferson Davis Monument



Removal and Temporary Restoration Sketch

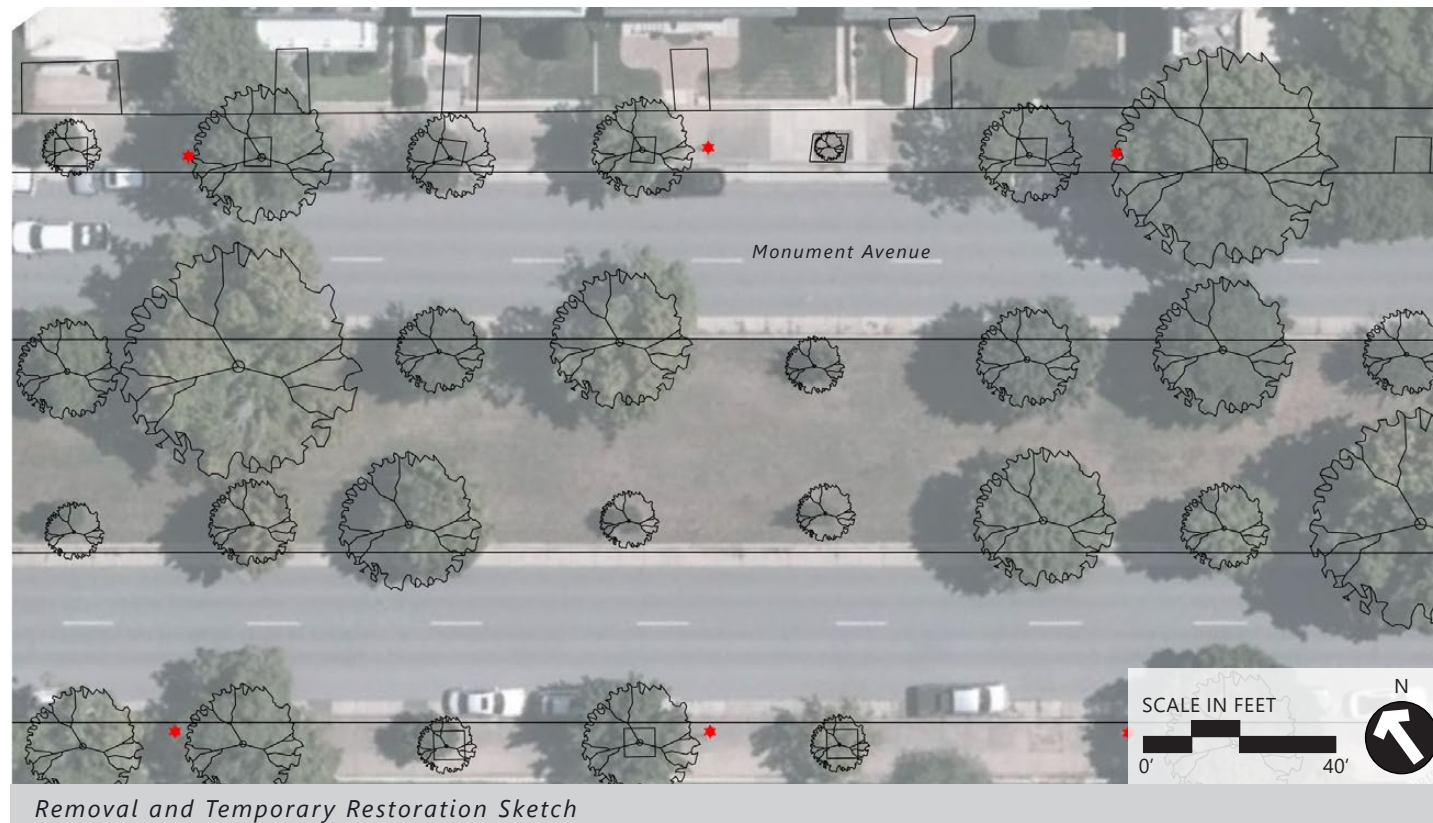
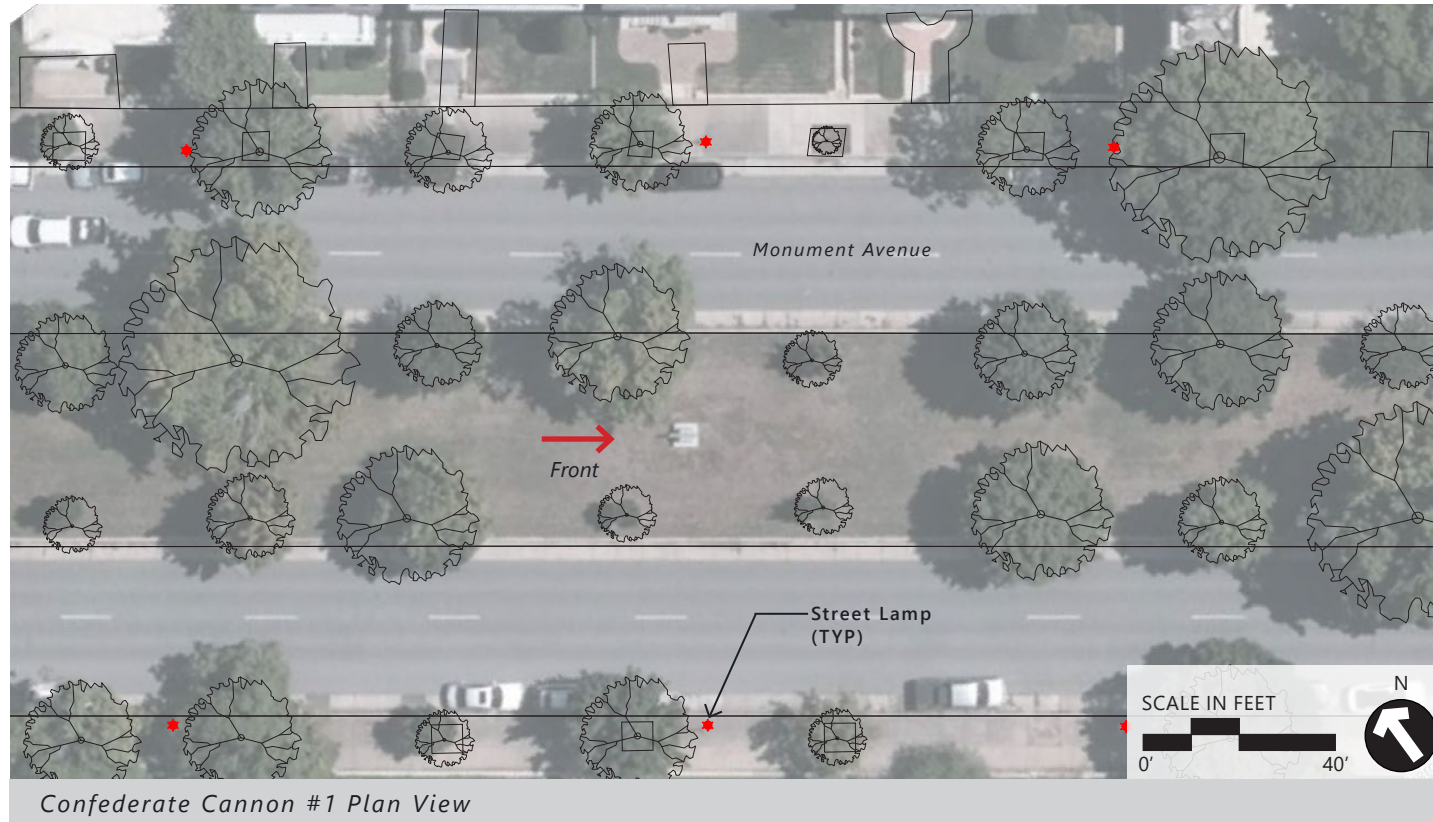
GENERAL NOTES

1. Removal of the stone associated with the monument is not part of this document and will be addressed separately.
2. Grading of the disturbed area should direct rain runoff from the center of the planting area, across the pavement to remain and over the curb and into the roadway stormwater system.
3. Existing light fixtures focused on the former monuments will be turned off and removed or replaced with pedestrian scale lighting as appropriate to the location.

PLANT LIST

Symbol	Qty	Botanical Name	Common Name	Specification
Large Shrubs				
CHI	3	<i>Chionanthus virginicus</i>	White Fringetree	5' Ht., 3'-4' Spr., Multi Stem, As shown
ILE	6	<i>Ilex verticillata</i> *	Winterberry	#5, 24" x 18", 48" o.c.
*Alternate Evergreen Species for <i>Ilex verticillata</i>:				
		<i>Ilex x meserveae</i> 'Blue Princess'	Blue Princess Holly	#5, 24" x 18", 48" o.c.
Small Shrubs				
HEM	135	<i>Hemerocallis</i> spp.	Daylily species	#1, 12" x 8", 18" o.c.
ITE	39	<i>Itea virginica</i> 'Henry's Garnet'	Virginia Sweetspire	#3, 15" x 15", 36" o.c.
RUD	195	<i>Rudbeckia fulgida sullivanii</i> 'Goldsturm'	Blackeyed Susan	4" Pots, 10" x 6", 15" o.c.
*Alternate Evergreen Species for <i>Itea virginica</i>:				
		<i>Abelia x grandiflora</i> 'Hopley's'	Hopley's Abelia	#3, 15" x 15", 36" o.c.

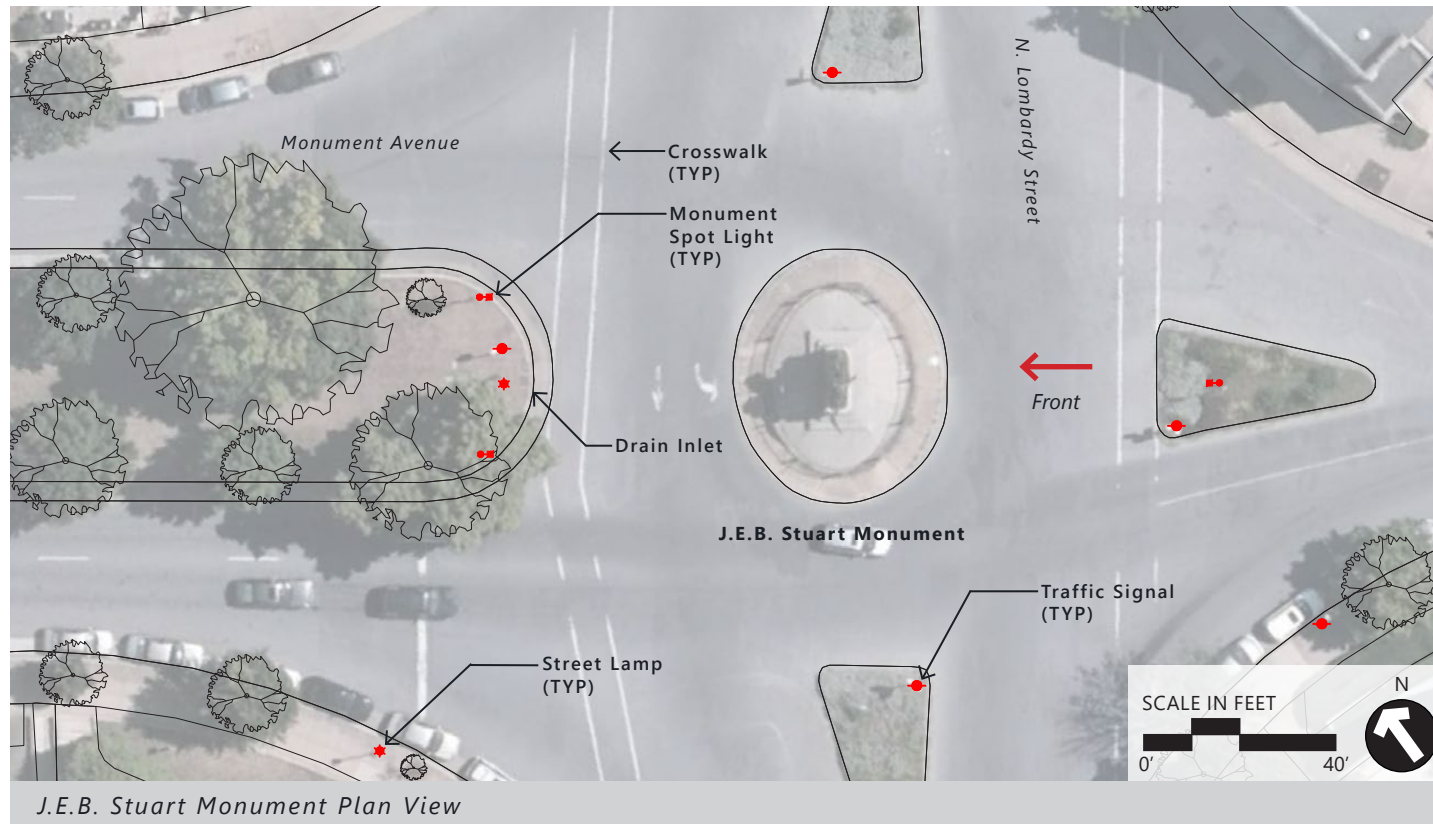
Plant List and General Notes



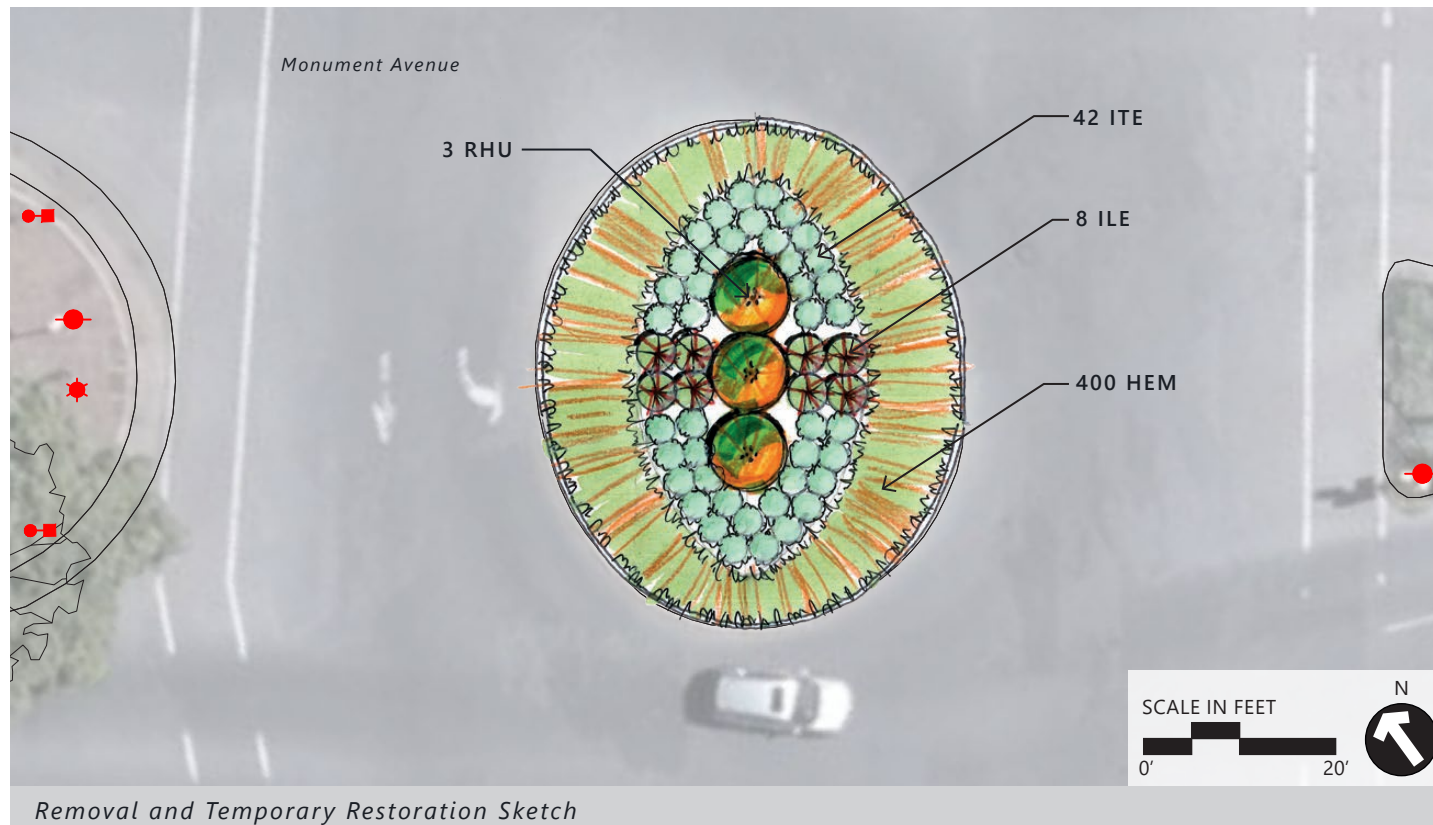
GENERAL NOTES

1. Removal of the stone associated with the monument is not part of this document and will be addressed separately.
2. The disturbed area following removal of the cannon and base shall be seeded to match the grass species of the surrounding area.

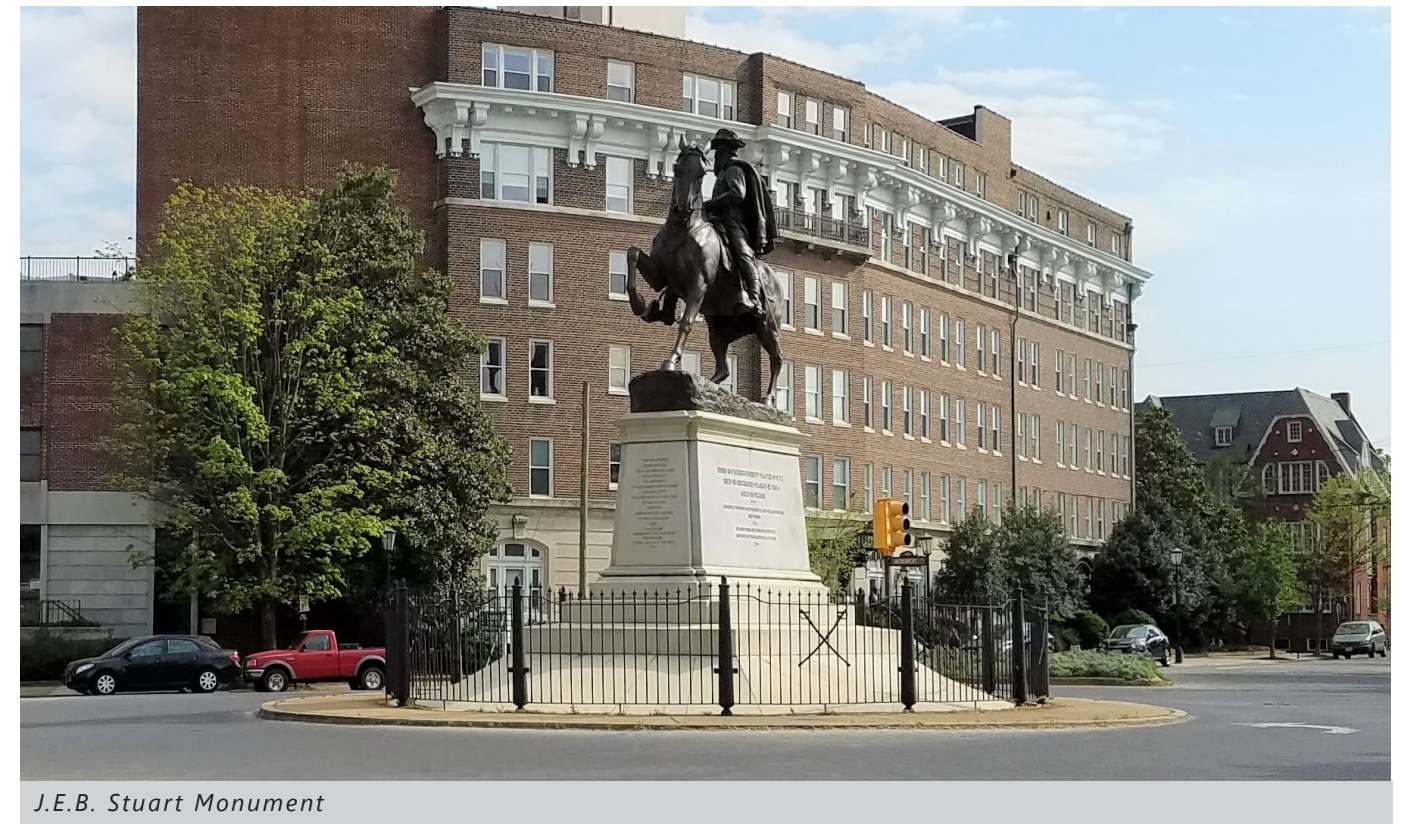
Plant List and General Notes



J.E.B. Stuart Monument Plan View



Removal and Temporary Restoration Sketch



J.E.B. Stuart Monument

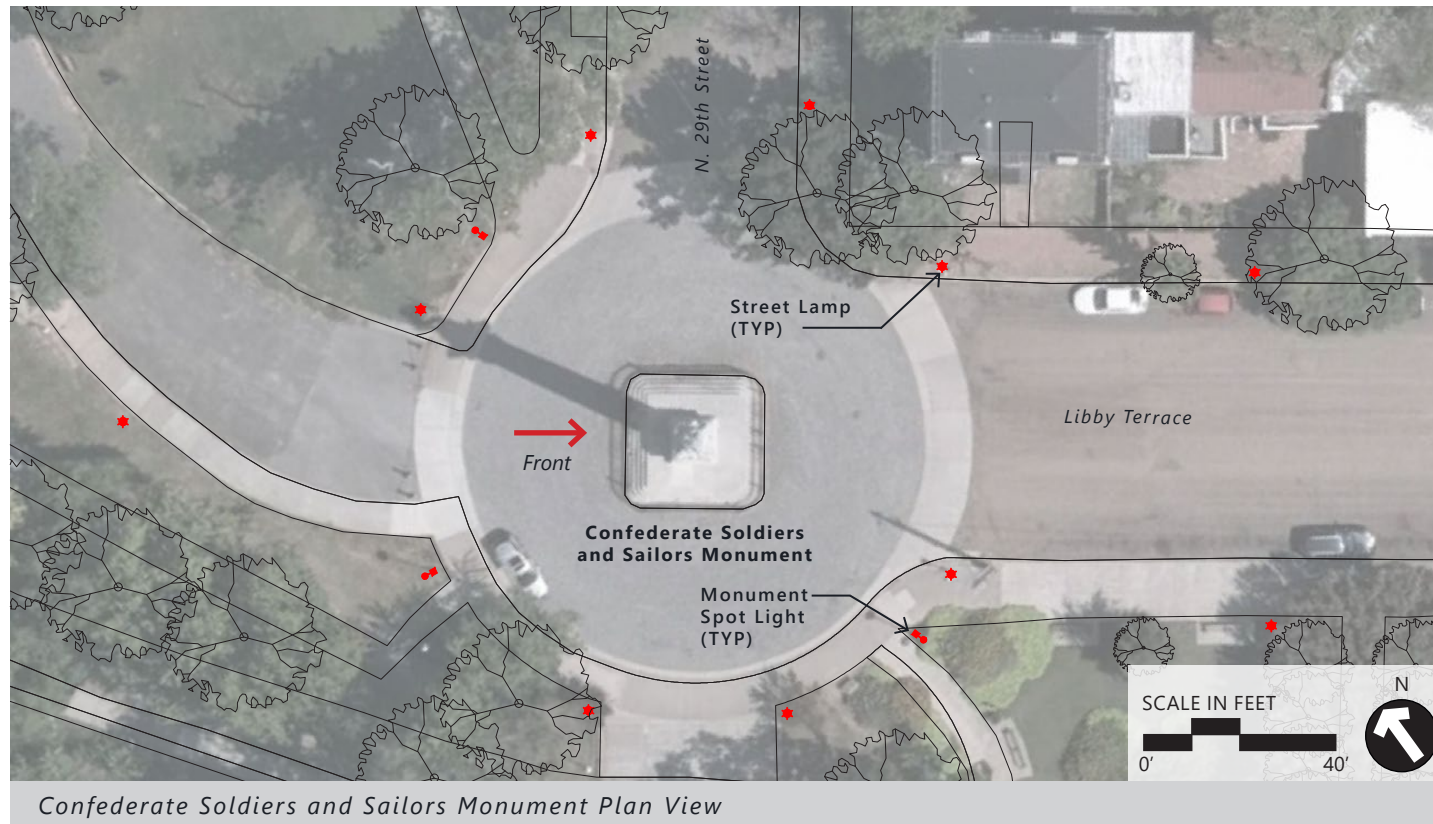
GENERAL NOTES

1. Removal of the stone associated with the monument is not part of this document and will be addressed separately.
2. Grading of the disturbed area should direct rain runoff from the center of the planting area and over the curb and into the roadway stormwater system.
3. Existing light fixtures focused on the former monuments will be turned off and removed or replaced with pedestrian scale lighting as appropriate to the location.

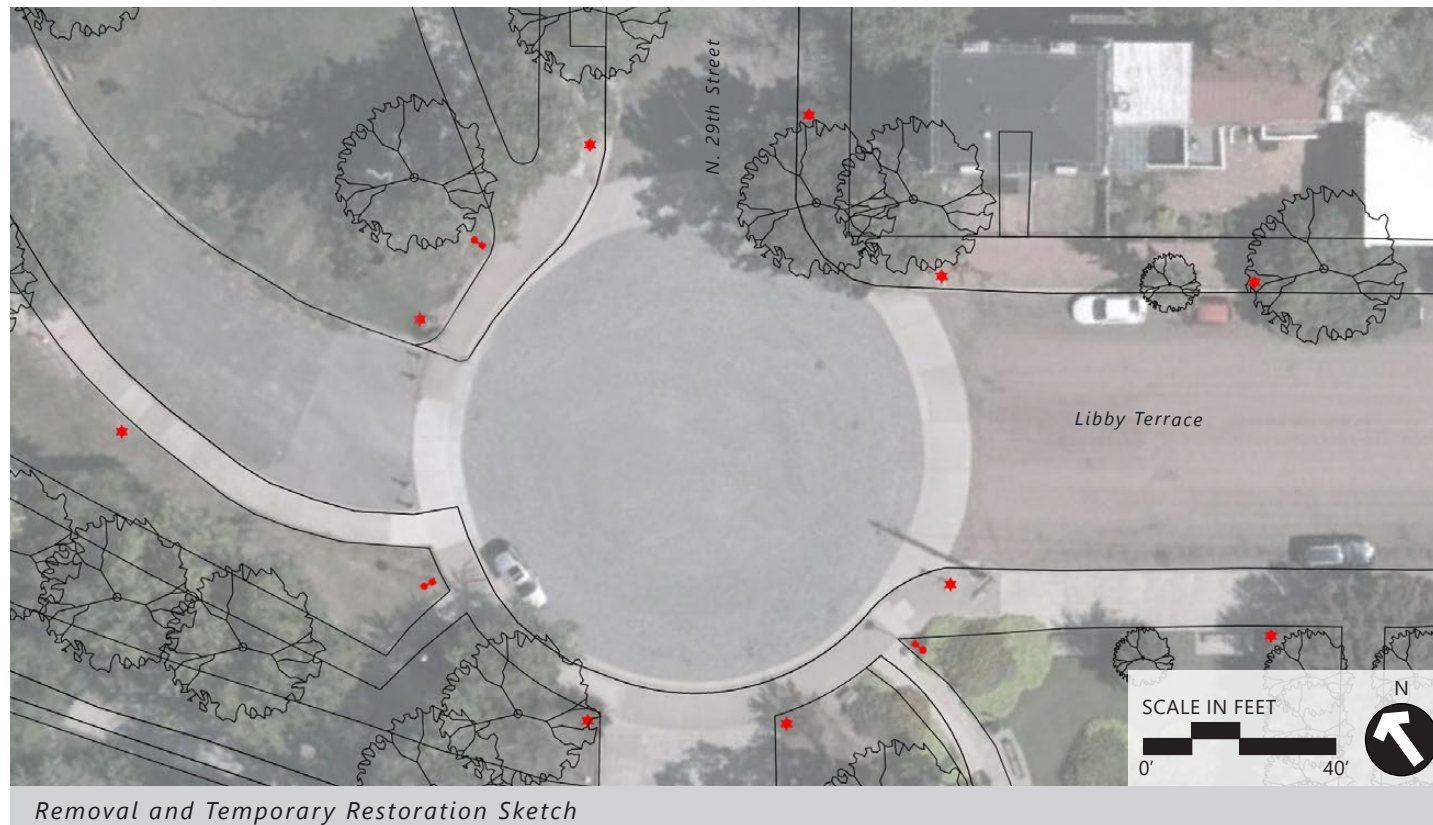
PLANT LIST

Symbol	Qty	Botanical Name	Common Name	Specification
Large Shrubs				
RHU	3	Rhus typhina*	Staghorn Sumac	5' Ht., 3'-4' Spr., Multi Stem, As shown
ILE	8	Ilex verticillata	Winterberry	#5, 24" x 18", 48" o.c.
*Alternate Evergreen Species for Rhus typhina:				
		Rhaphiolepis x 'Montic'	Majestic Beauty Indian Hawthorn	5' Ht., 3'-4' Spr., Multi-Stem
Small Shrubs				
HEM	400	Hemerocallis spp.	Daylily species	#1, 12" x 8", 18" o.c.
ITE	42	Itea virginica 'Henry's Garnet'*	Virginia Sweetspire	#7, 20" x 20", 4' o.c.
*Alternate Evergreen Species for Itea virginica:				
		Abelia x grandiflora 'Hopley's'	Hopley's Abelia	#3, 15" x 15", 36" o.c.

Plant List and General Notes



Confederate Soldiers and Sailors Monument Plan View



Removal and Temporary Restoration Sketch

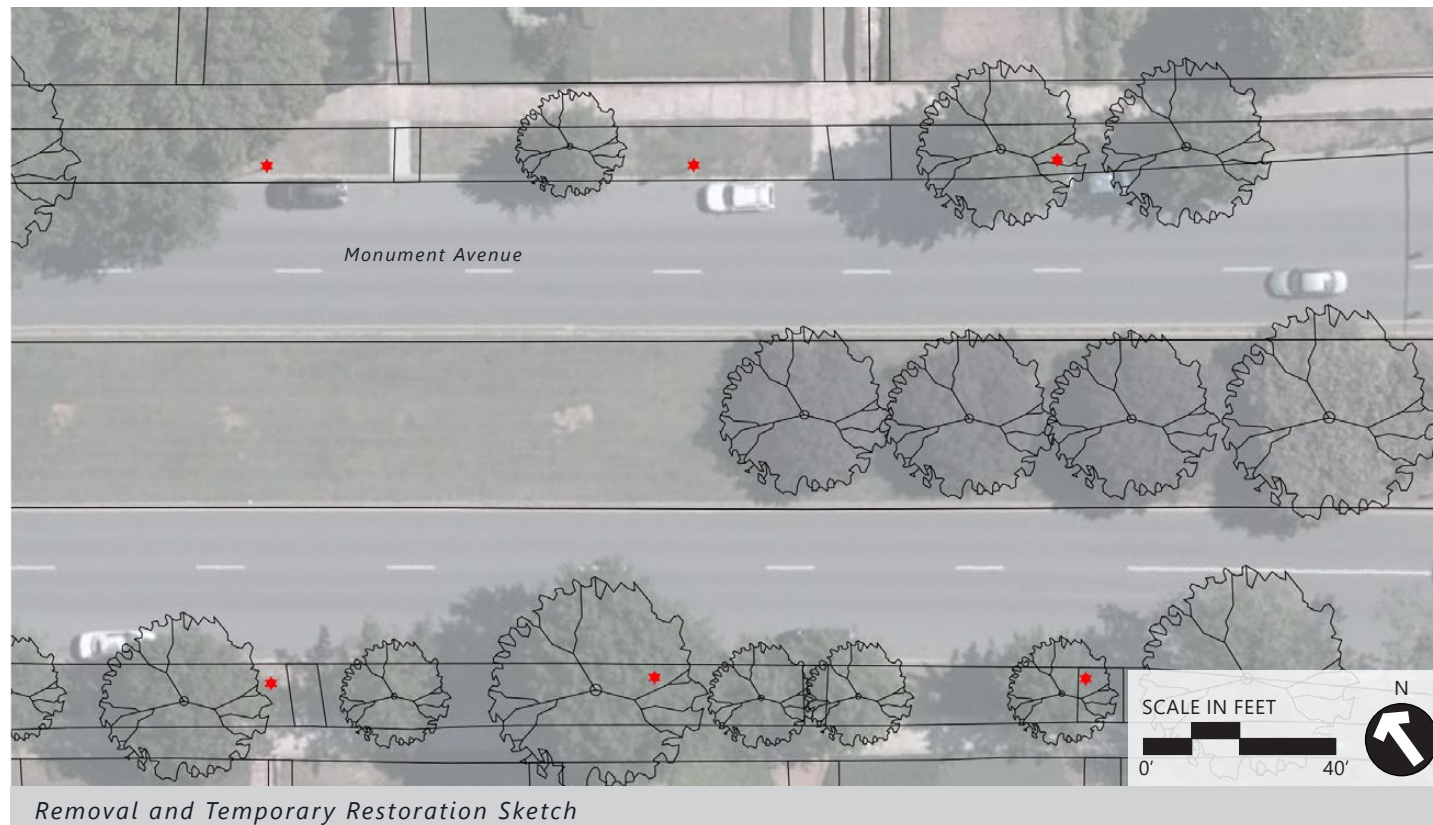
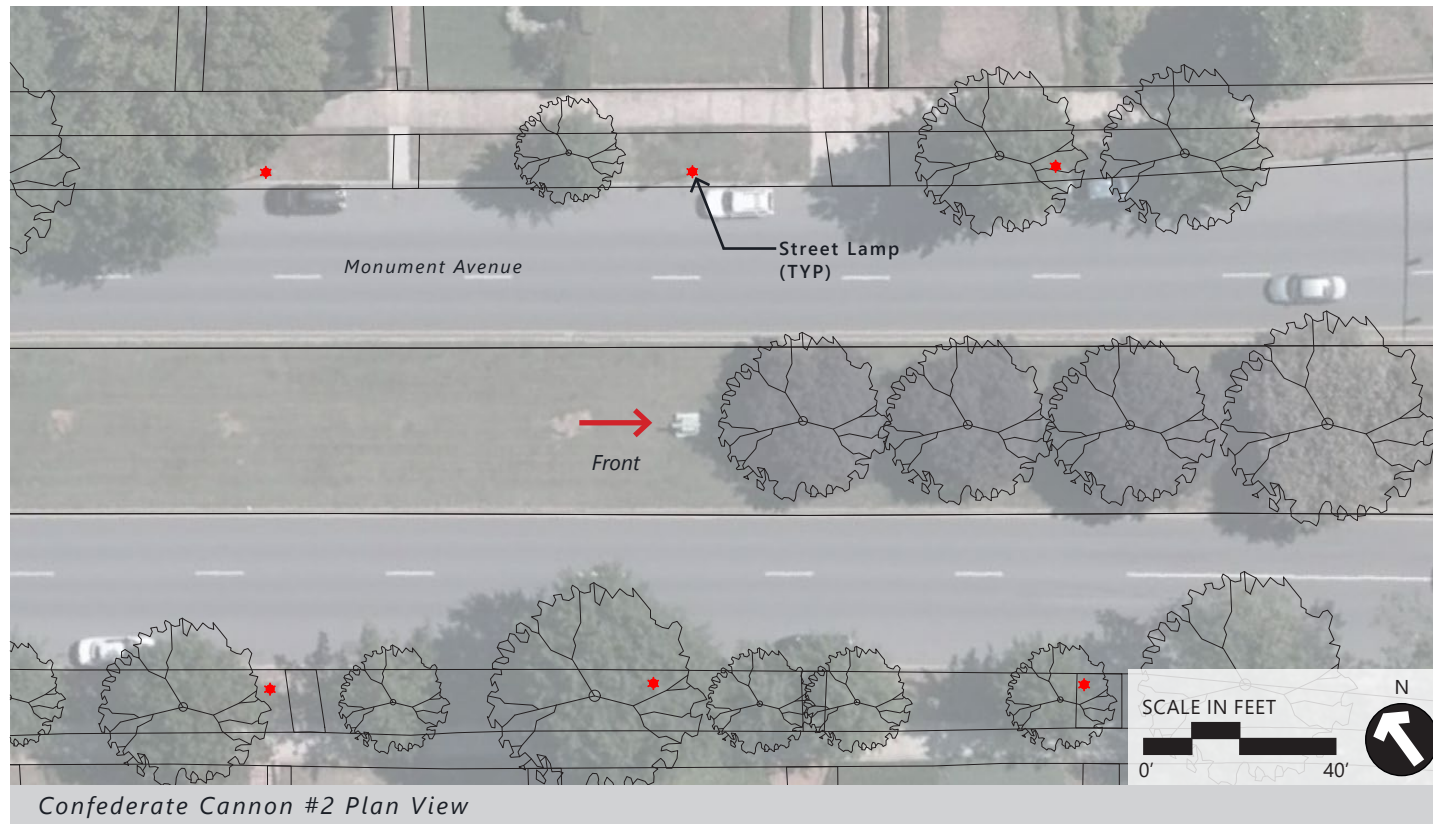


Confederate Soldiers and Sailors Monument

GENERAL NOTES

1. Removal of the stone associated with the monument is not part of this document and will be addressed separately.
2. The monument, steps, fence, and curb to be removed and replaced with granite cobblestone paving to match the existing paving from the Department of Public Works inventory.
3. Existing light fixtures focused on the former monuments will be turned off and removed or replaced with pedestrian scale lighting as appropriate to the location.

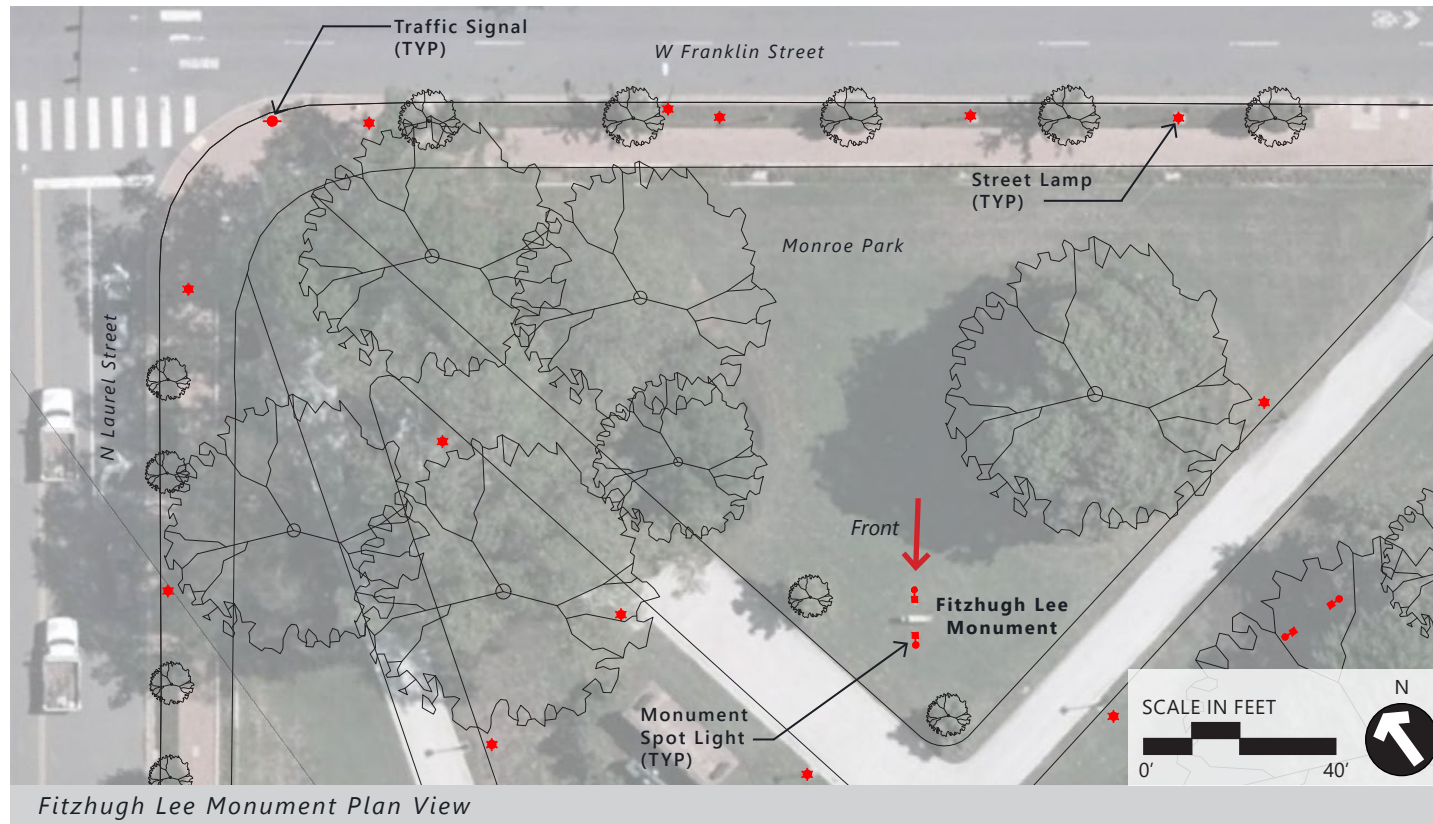
Plant List and General Notes



GENERAL NOTES

1. Removal of the stone associated with the monument is not part of this document and will be addressed separately.
2. The disturbed area following removal of the cannon and base shall be seeded to match the grass species of the surrounding area.

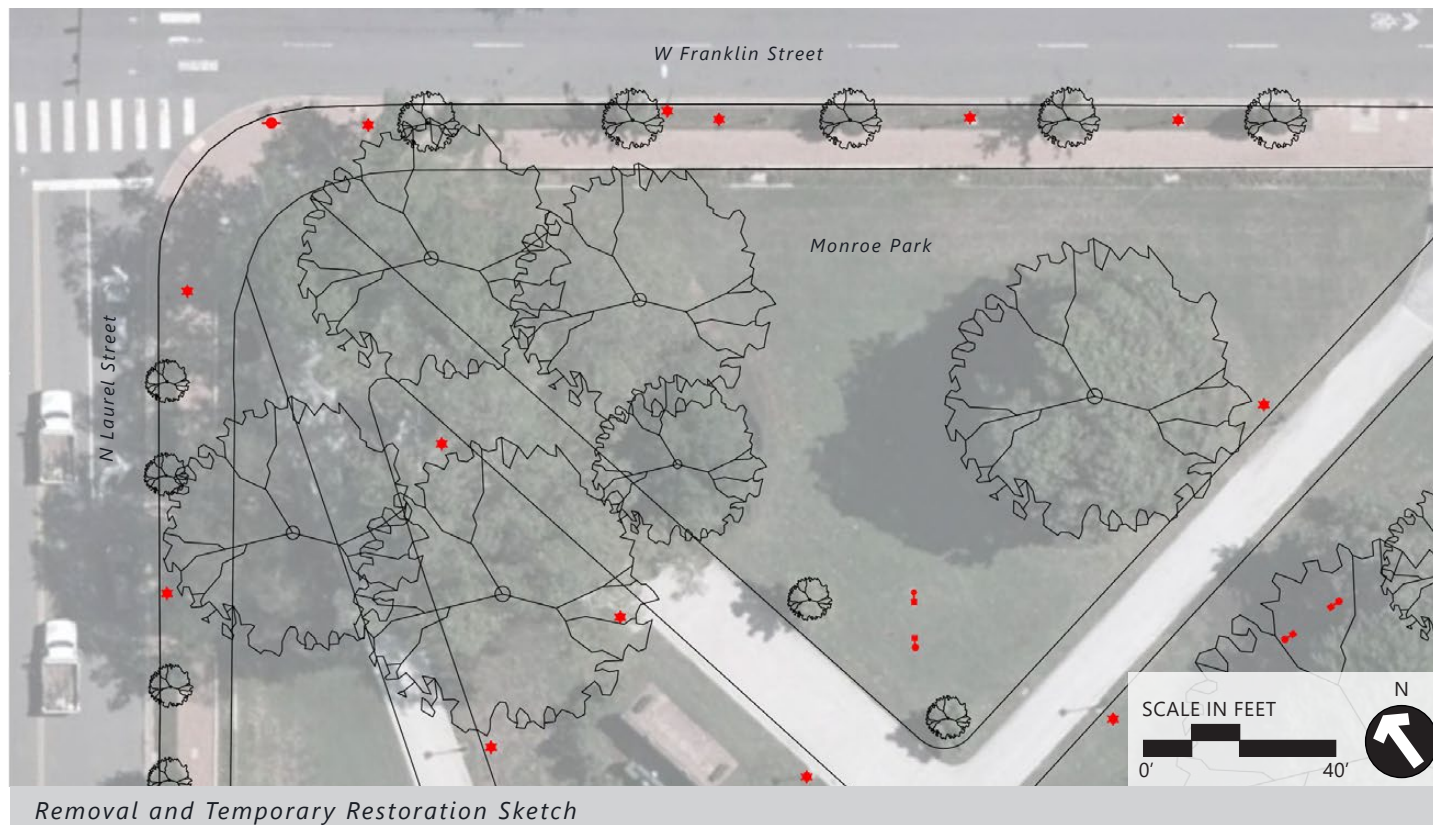
Plant List and General Notes



Fitzhugh Lee Monument Plan View



Fitzhugh Lee Monument

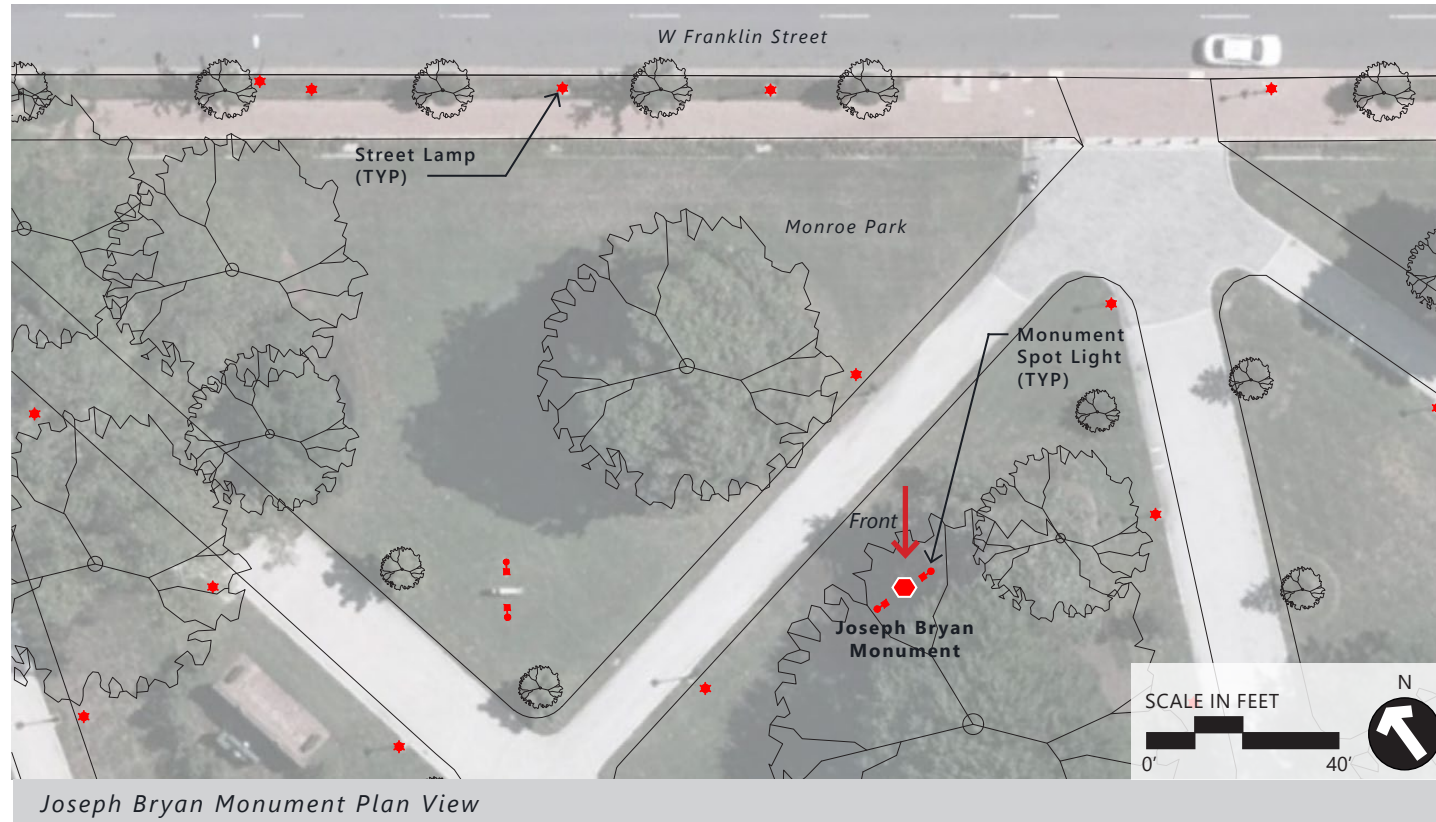


Removal and Temporary Restoration Sketch

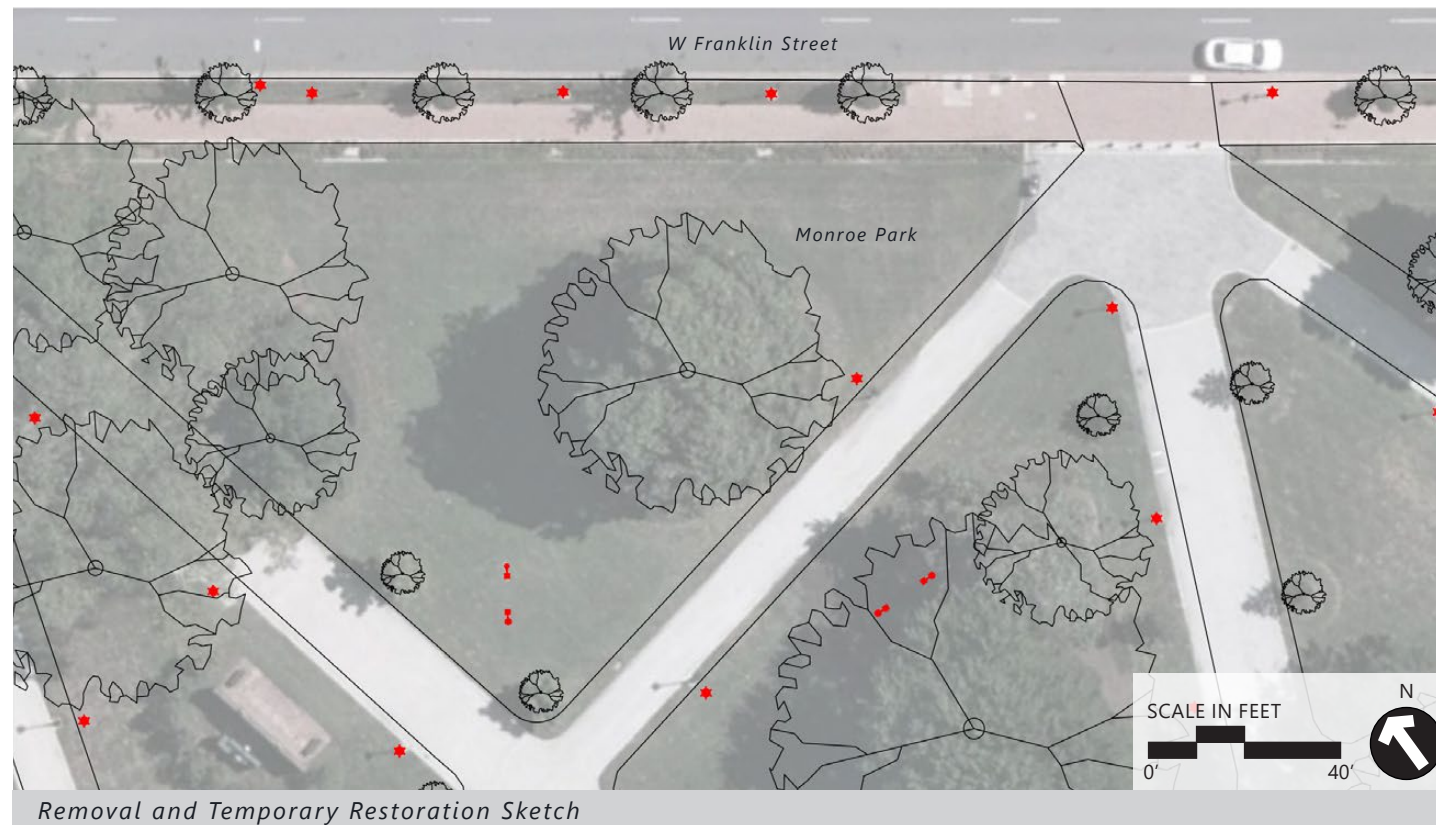
GENERAL NOTES

1. Removal of the stone associated with the monument is not part of this document and will be addressed separately.
2. The disturbed area following removal of the monument and base shall be seeded to match the grass species of the surrounding area.
3. Existing light fixtures focused on the former monuments will be turned off and removed or replaced with pedestrian scale lighting as appropriate to the location.

Plant List and General Notes



Joseph Bryan Monument Plan View



Removal and Temporary Restoration Sketch

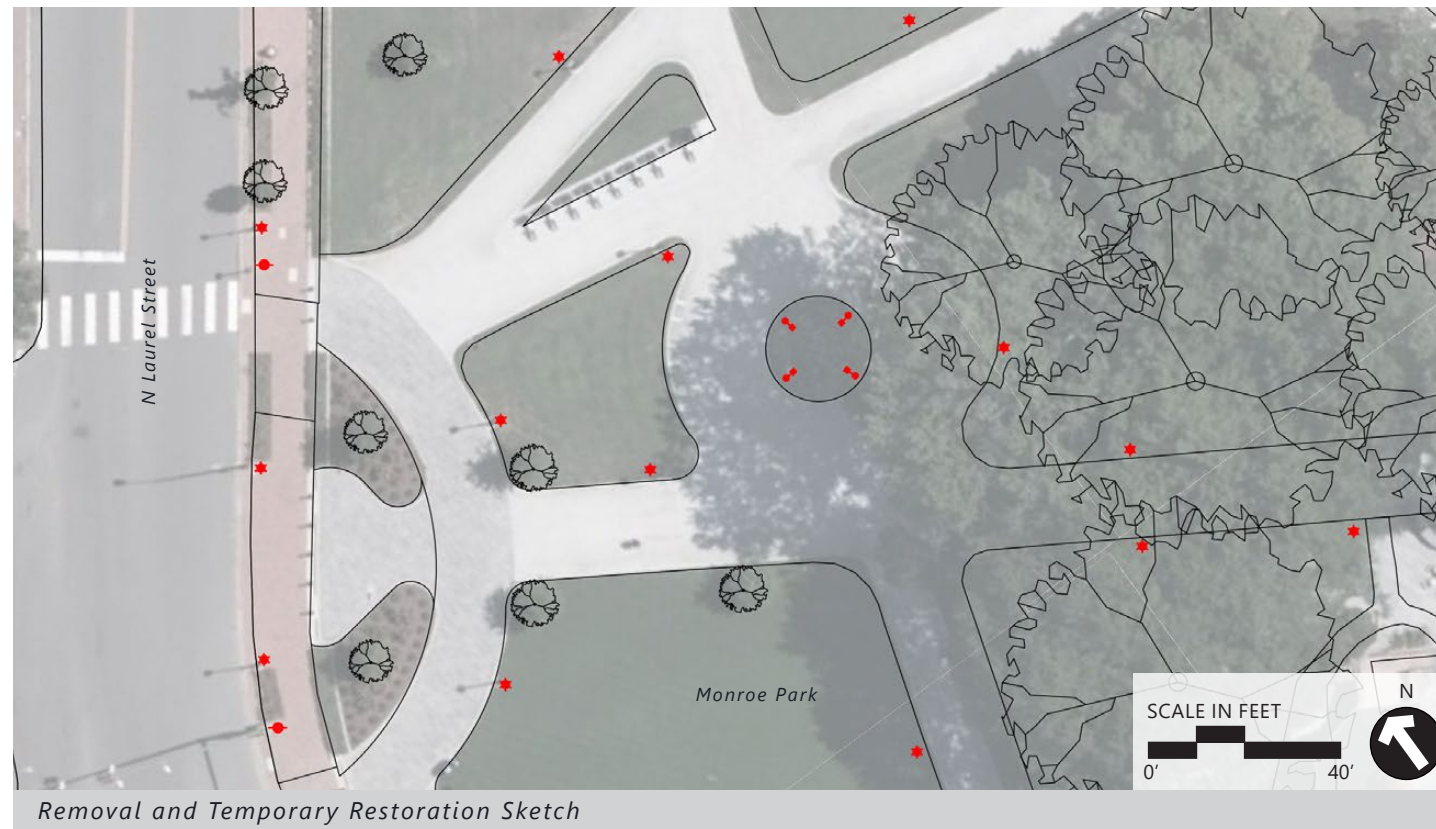
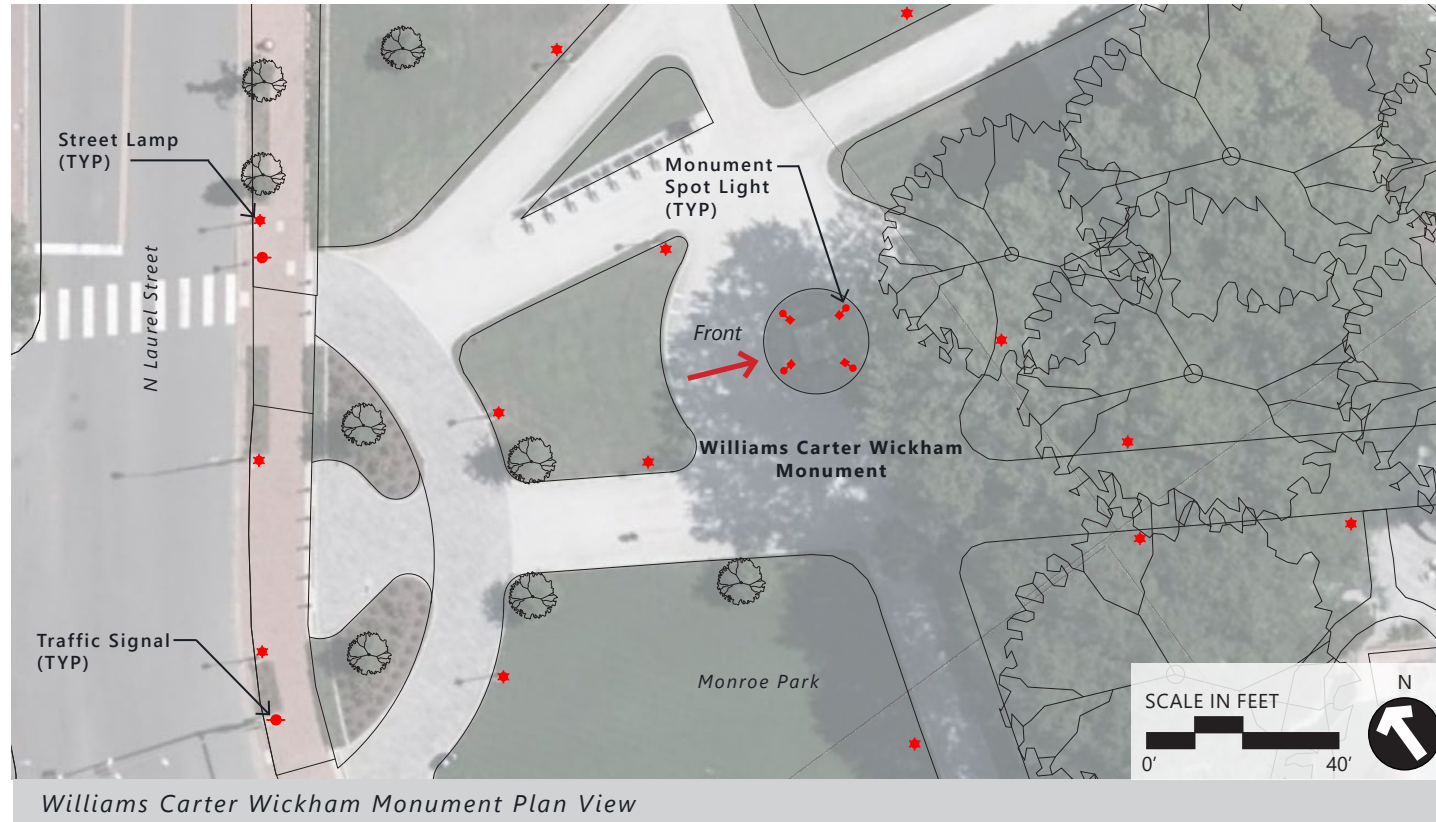


Joseph Bryan Monument

GENERAL NOTES

1. Removal of the stone associated with the monument is not part of this document and will be addressed separately.
2. The disturbed area following removal of the monument and base shall be mulched to match the surrounding area.
3. Existing light fixtures focused on the former monuments will be turned off and removed or replaced with pedestrian scale lighting as appropriate to the location.

Plant List and General Notes



GENERAL NOTES

1. Removal of the stone associated with the monument is not part of this document and will be addressed separately.
2. The disturbed area following removal of the monument and base shall be seeded to match the grass species of the surrounding area.
3. Existing light fixtures focused on the former monuments will be turned off and removed or replaced with pedestrian scale lighting as appropriate to the location.

Plant List and General Notes

Large Shrubs



Chionanthus virginicus
White Fringetree



Ilex x meserveae 'Blue Princess'
Blue Princess Holly



Ilex verticillata
Winterberry



Raphiolepis x 'Montic'
Majestic Beauty Indian Hawthorn



Rhus typhina
Staghorn Sumac

Small Shrubs



Abelia x grandiflora 'Hopley's'
Hopley's Abelia



Hemerocallis spp.
Daylily species



Itea virginica 'Henry's Garnet'
Virginia Sweetspire



Rudbeckia fulgida sullivantii 'Goldsturm'
Blackeyed Susan

Grasses



Muhlenbergia capillaris
Pink Muhly Grass

North Carolina Department of Transportation
Preliminary Estimate

City of Richmond Confederate Monument Location Temporary Treatments
#1 - A.P. Hill Monument

Requested By: Wayne Robinson, PLA - VHB

Date 4/30/2021

Line Item	Description	Quantity	Unit	Price	Amount
1	Mobilization	1	LS	\$ 2,500.00	\$ 2,500.00
2	Maintenance of Traffic	1	LS	\$ 10,000.00	\$ 10,000.00
3	Erosion and Sediment Control/Inlet Protection	1	LS	\$ 5,000.00	\$ 5,000.00
4	Clearing and Grubbing	0	Acres	\$ -	\$ -
5	Supplementary Clearing and Grubbing	0	Acres	\$ -	\$ -
6	Unclassified Excavation	130	CY	\$ 32.00	\$ 4,160.00
7	Borrow Excavation	0	CY	\$ 32.00	\$ -
8	Removal of Existing Asphalt Pavement 8"	0	SY	\$ 115.00	\$ -
9	Removal of Existing Concrete 6"	0	SY	\$ 125.00	\$ -
10	Fine Grading	0	SY	\$ 20.00	\$ -
11	Compacted Fill	30	CY	\$ 30.00	\$ 900.00
12	Base Rock - compacted	20	CY	\$ 60.00	\$ 1,200.00
13	Asphalt - City DPW Standard	88	SY	\$ 110.00	\$ 9,680.00

Estimated Cost \$ 33,440.00

North Carolina Department of Transportation
Preliminary Estimate

City of Richmond Confederate Monument Location Temporary Treatments
#2 - Matthew F. Maury Monument

Requested By: Wayne Robinson, PLA - VHB

Date

4/30/2021

Line Item	Description	Quantity	Unit	Price	Amount
1	Mobilization	1	LS	\$ 2,500.00	\$ 2,500.00
2	Maintenance of Traffic	1	LS	\$ 10,000.00	\$ 10,000.00
3	Erosion and Sediment Control/Inlet Protection	1	LS	\$ 5,000.00	\$ 5,000.00
4	Clearing and Grubbing	0	Acres	\$ -	\$ -
5	Supplementary Clearing and Grubbing	0	Acres	\$ -	\$ -
6	Unclassified Excavation	36	CY	\$ 32.00	\$ 1,152.00
7	Borrow Excavation	0	CY	\$ 32.00	\$ -
8	Removal of Existing Asphalt Pavement 8"	0	SY	\$ 115.00	\$ -
9	Removal of Existing Concrete 6"	0	SY	\$ 125.00	\$ -
10	Fine Grading	54	SY	\$ 20.00	\$ 1,080.00
11	Compacted Fill	0	CY	\$ 30.00	\$ -
12	Planting Mix	40	CY	\$ 50.00	\$ 2,000.00
13	Soil Prep for Sod/Seed	153	SY	\$ 25.00	\$ 3,825.00
14	Sod - Fescue	153	SY	\$ 8.00	\$ 1,224.00
15	Chionanthus virginicus - White Fringetree - 5' Ht., Multi	4	EA	\$ 250.00	\$ 1,000.00
16	Muhlenbergia capillaris - Mhuly Grass - #1	100	EA	\$ 12.00	\$ 1,200.00
15	Mulch	153	LS	\$ 8.00	\$ 1,224.00
16	Watering During Establishment - 90 days - 3 per week	36	EA	\$ 150.00	\$ 5,400.00

Estimated Cost \$ 35,605.00

North Carolina Department of Transportation
Preliminary Estimate

City of Richmond Confederate Monument Location Temporary Treatments
#3 - Stonewall Jackson Monument

Requested By: Wayne Robinson, PLA - VHB

Date 4/30/2021

Line Item	Description	Quantity	Unit	Price	Amount
1	Mobilization	1	LS	\$ 2,500.00	\$ 2,500.00
2	Maintenance of Traffic	1	LS	\$ 10,000.00	\$ 10,000.00
3	Erosion and Sediment Control/Inlet Protection	1	LS	\$ 5,000.00	\$ 5,000.00
4	Clearing and Grubbing	0	Acres	\$ -	\$ -
5	Supplementary Clearing and Grubbing	0	Acres	\$ -	\$ -
6	Unclassified Excavation	80	CY	\$ 32.00	\$ 2,560.00
7	Borrow Excavation	0	CY	\$ 32.00	\$ -
8	Removal of Existing Asphalt Pavement 8"	0	SY	\$ 115.00	\$ -
9	Removal of Existing Concrete 6"	0	SY	\$ 125.00	\$ -
10	Fine Grading	0	SY	\$ 20.00	\$ -
11	Compacted Fill	40	CY	\$ 30.00	\$ 1,200.00
12	Base Rock - compacted	25	CY	\$ 60.00	\$ 1,500.00
13	Asphalt - City DPW Standard	121	SY	\$ 110.00	\$ 13,310.00

Estimated Cost \$ 36,070.00

North Carolina Department of Transportation
Preliminary Estimate

City of Richmond Confederate Monument Location Temporary Treatments
#4 - Jeffersoon Davis Monument

Requested By: Wayne Robinson, PLA - VHB

Date

4/30/2021

Line Item	Description	Quantity	Unit	Price	Amount
1	Mobilization	1	LS	\$ 2,500.00	\$ 2,500.00
2	Maintenance of Traffic	1	LS	\$ 10,000.00	\$ 10,000.00
3	Erosion and Sediment Control/Inlet Protection	1	LS	\$ 5,000.00	\$ 5,000.00
4	Clearing and Grubbing	0	Acres	\$ -	\$ -
5	Supplementary Clearing and Grubbing	0	Acres	\$ -	\$ -
6	Unclassified Excavation	94	CY	\$ 32.00	\$ 3,008.00
7	Borrow Excavation	0	CY	\$ 32.00	\$ -
8	Removal of Existing Asphalt Pavement 8"	0	SY	\$ 115.00	\$ -
9	Removal of Existing Concrete 6"	0	SY	\$ 125.00	\$ -
10	Fine Grading	142	SY	\$ 20.00	\$ 2,840.00
11	Compacted Fill	0	CY	\$ 30.00	\$ -
12	Planting Mix	94	CY	\$ 50.00	\$ 4,700.00
13	Soil Prep for Sod/Seed	0	SY	\$ 25.00	\$ -
14	Sod - Fescue	0	SY	\$ 8.00	\$ -
15	Chionanthus virginicus - White Fringetree - 5' Ht., Multi	3	EA	\$ 250.00	\$ 750.00
16	Ilex verticillata - Winterberry - #5	6	EA	\$ 65.00	\$ 390.00
	Hemerocallis spp. - Daylily - #1	135	EA	\$ 12.00	\$ 1,620.00
	Itea virginica 'Henery's Garnet' - Virginia Sweetspire - #3	39	EA	\$ 45.00	\$ 1,755.00
	Rudbeckia fulgida 'Goldstrum' - Blackeyed Susan - 4" Pots	195	EA	\$ 8.00	\$ 1,560.00
15	Mulch	142	SY	\$ 8.00	\$ 1,136.00
16	Watering During Establishment - 90 days - 3 per week	36	EA	\$ 150.00	\$ 5,400.00

Estimated Cost \$ 40,659.00

North Carolina Department of Transportation
Preliminary Estimate

City of Richmond Confederate Monument Location Temporary Treatments
#5 - Confederate Cannon #1

Requested By: Wayne Robinson, PLA - VHB

Date

4/30/2021

Line Item	Description	Quantity	Unit	Price	Amount
1	Mobilization	1	LS	\$ 500.00	\$ 500.00
2	Maintenance of Traffic	1	LS	\$ 1,000.00	\$ 1,000.00
3	Erosion and Sediment Control/Inlet Protection	0	LS	\$ 5,000.00	\$ -
4	Clearing and Grubbing	0	Acres	\$ -	\$ -
5	Supplementary Clearing and Grubbing	0	Acres	\$ -	\$ -
6	Unclassified Excavation	0	CY	\$ 32.00	\$ -
7	Borrow Excavation	0	CY	\$ 32.00	\$ -
8	Removal of Existing Asphalt Pavement 8"	0	SY	\$ 115.00	\$ -
9	Removal of Existing Concrete 6"	0	SY	\$ 125.00	\$ -
10	Fine Grading	0	SY	\$ 20.00	\$ -
11	Compacted Fill	0	CY	\$ 30.00	\$ -
12	Planting Mix	0	CY	\$ 50.00	\$ -
13	Soil Prep for Sod/Seed	4	SY	\$ 25.00	\$ 100.00
14	Sod - Fescue	4	SY	\$ 8.00	\$ 32.00
15	Mulch	0	SY	\$ 8.00	\$ -
16	Watering During Establishment - 60 days - 3 per week	24	EA	\$ 150.00	\$ 3,600.00
Estimated Cost					\$ 5,232.00

North Carolina Department of Transportation
Preliminary Estimate

City of Richmond Confederate Monument Location Temporary Treatments
#6 - J.E.B. Stuart Monument

Requested By: Wayne Robinson, PLA - VHB

Date

4/30/2021

Line Item	Description	Quantity	Unit	Price	Amount
1	Mobilization	1	LS	\$ 2,500.00	\$ 2,500.00
2	Maintenance of Traffic	1	LS	\$ 10,000.00	\$ 10,000.00
3	Erosion and Sediment Control/Inlet Protection	1	LS	\$ 5,000.00	\$ 5,000.00
4	Clearing and Grubbing	0	Acres	\$ -	\$ -
5	Supplementary Clearing and Grubbing	0	Acres	\$ -	\$ -
6	Unclassified Excavation	136	CY	\$ 32.00	\$ 4,352.00
7	Borrow Excavation	0	CY	\$ 32.00	\$ -
8	Removal of Existing Asphalt Pavement 8"	0	SY	\$ 115.00	\$ -
9	Removal of Existing Concrete 6"	0	SY	\$ 125.00	\$ -
10	Fine Grading	207	SY	\$ 20.00	\$ 4,140.00
11	Compacted Fill	0	CY	\$ 30.00	\$ -
12	Planting Mix	136	CY	\$ 50.00	\$ 6,800.00
13	Soil Prep for Sod/Seed	0	SY	\$ 25.00	\$ -
14	Sod - Fescue	0	SY	\$ 8.00	\$ -
15	Rhus typhina - Staghorn Sumac - 5' Ht., Multi	3	EA	\$ 250.00	\$ 750.00
16	Ilex verticillata - Winterberry - #5	8	EA	\$ 65.00	\$ 520.00
	Hemerocallis spp. - Daylily - #1	400	EA	\$ 12.00	\$ 4,800.00
	Itea virginica 'Henery's Garnet' - Virginia Sweetspire - #3	42	EA	\$ 45.00	\$ 1,890.00
15	Mulch	207	SY	\$ 8.00	\$ 1,656.00
16	Watering During Establishment - 90 days - 3 per week	36	EA	\$ 150.00	\$ 5,400.00

Estimated Cost \$ 47,808.00

North Carolina Department of Transportation
Preliminary Estimate

City of Richmond Confederate Monument Location Temporary Treatments
#7 - Confederate Soldiers and Sailors Monument

Requested By: Wayne Robinson, PLA - VHB

Date 4/30/2021

Line Item	Description	Quantity	Unit	Price	Amount
1	Mobilization	1	LS	\$ 2,500.00	\$ 2,500.00
2	Maintenance of Traffic	1	LS	\$ 5,000.00	\$ 5,000.00
3	Erosion and Sediment Control/Inlet Protection	1	LS	\$ 5,000.00	\$ 5,000.00
4	Clearing and Grubbing	0	Acres	\$ -	\$ -
5	Supplementary Clearing and Grubbing	0	Acres	\$ -	\$ -
6	Unclassified Excavation	58	CY	\$ 32.00	\$ 1,856.00
7	Borrow Excavation	0	CY	\$ 32.00	\$ -
8	Removal of Existing Asphalt Pavement 8"	0	SY	\$ 115.00	\$ -
9	Removal of Existing Concrete 6"	0	SY	\$ 125.00	\$ -
10	Fine Grading	0	SY	\$ 20.00	\$ -
11	Compacted Fill	30	CY	\$ 30.00	\$ 900.00
12	Base Rock - compacted	20	CY	\$ 60.00	\$ 1,200.00
13	Cobblestone Installation - from DPW inventory	88	SY	\$ 200.00	\$ 17,600.00

Estimated Cost \$ 34,056.00

DISASSEMBLY OF A.P. HILL GRAVE MEMORIAL AND THE 5 CONFEDERATE MONUMENT PEDESTAL BASES ON MONUMENT AVENUE

INTRODUCTION:

All six pedestal bases are constructed of granite blocks and plinths.
All have capstones had bronze statuary base plates attached with bronze pins or bolts.
Some capstones may have a lightening rod attachment into and through the pedestal base.
All granite components must be crane lifted with straps for disassembly.

Typically, all stone components are dry laid; any mortar is only applied to hide surface joinery. This mortar is removed prior to lifting by crew using a hand grinder with a stone blade; access is by man-lift. Some of the pedestal bases may have internal/hidden bronze pins or straps which may need to be cut or removed prior to lifting. Holes may need to be drilled into the hidden face of some stone components to allow for pin insertion and lifting access.

Typically, base blocks which square off the foundation are filled with concrete and demolition is required.

A.P. HILL GRAVE MEMORIAL: (For picture, see page 3/3)

Statue Removal:

Unbolt pins or, if necessary, cut out pins from base plate for the release of the statue baseplate. Cut plate will be welded back in place after removal of the statue.

Possible lightening rod and cable may be attached to baseplate and must be cut.
Statue is strapped by chest and arms for crane lift and transported on tire dunnage or pallet with dunnage if required.

Stone removal:

45 block and plinth stones compose the pedestal base, plus a stone and brick sarcophagus below grade. Human remains removal coordinated by Department of Historic resources.

Access:

Ample room in the roundabout intersection for crew and equipment, however this is a heavily trafficked commuter route so security and detour strategy must be planned.

3 day minimum disassembly, likely more depending on contractor's needs.

CONFEDERATE SOLDIER AND SAILOR'S: (For picture, see page 3/3)

Stone removal:

90 ft. height of the column base requires added considerations for wind and weather.
There are 104 stone components, or more; the very large cap stone group (8 stones) and 13 disc stones are very heavy and this removal is made more challenging due to the height.

Five (5) base plinths and 48 slab/plinths total all the stones to grade

Access:

Ample room in the roundabout intersection for crew and equipment; minimal traffic control- resident access only; some security needed at park boundary.

Contractor must appraise time needed for entire removal to grade.

(Continued)

**DISASSEMBLY OF A.P. HILL GRAVE MEMORIAL AND THE 5 CONFEDERATE
MONUMENT PEDESTAL BASES ON MONUMENT AVENUE**

J.E.B. STUART: (For picture, see page 3/3)

Stone removal:

120 block and plinth stones compose the pedestal base: cap stone 2; face plinths 4; architrave (molding) 10; block/plinths 26; slab plinths 28; curb blocks 28.

Access:

Ample room in the roundabout intersection for crew and equipment, however this is a heavily trafficked intersection so security and detour strategy may be extensive.

3 day minimum disassembly, likely more depending on contractor's needs.

Contractor must appraise time needed for entire removal to grade.

JEFFERSON DAVIS: (For picture, see page 3/3)

Stone removal:

Initial removal would likely include the capstone group, column discs and rings and column base plinths; this totals 20 large stone components with multiple bronze stars, letters and a plaque still attached; the Davis bronze statue base totals 6 plinth blocks.

Removal of these 26 large statuary related components would clear the center space for the amphitheater-like structure. Complete removal of the over 300 architectural stone components for this part of the memorial will be a multi-week long project and will require contractor's appraisal for an accurate estimate of time required for such.

STONEWALL JACKSON: (For picture, see page 3/3)

Stone removal:

32 block and plinth stones, some very large, compose this pedestal base. In addition to demolition of interior concrete, the brick pavers and concrete curb will also need to be demolished to remove everything grade.

Access:

Ample room in the roundabout intersection for crew and equipment, however this is a heavily trafficked intersection so security and detour strategy may be extensive.

3 day minimum disassembly, likely more depending on contractor's needs.

Contractor must appraise time needed for entire removal to grade.

MATTHEW FONTAINE MAURY: (For picture, see page 3/3)

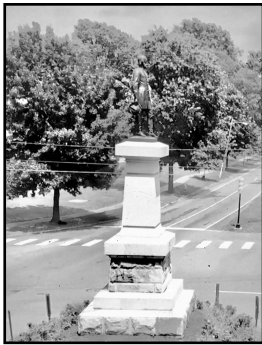
Stone removal:

72 block and plinth stones compose the globe and the statue pedestal bases and curbing.

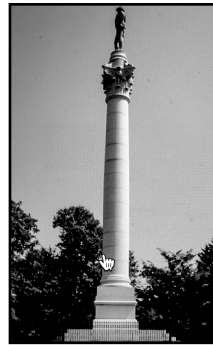
In addition to demolition of interior concrete, the brick pavers and concrete curb will also need to be demolished to remove everything to grade.

(Continued, Confederate Statues Base Pedestal Pictures)
**DISASSEMBLY OF A.P. HILL GRAVE MEMORIAL AND THE 5 CONFEDERATE
MONUMENT PEDESTAL BASES ON MONUMENT AVENUE**

A.P. HILL GRAVE MEMORIAL:



CONFEDERATE SOLDIER AND SAILOR'S :



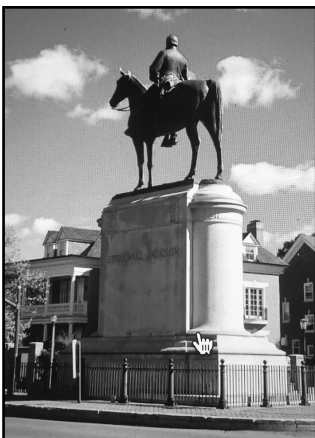
J.E.B. STUART



JEFFERSON DAVIS MEMORIAL



STONEWALL JACKSON:



MATTHEW FONTAINE MAURY:

