

PROJECT SCHEDULE

SIGN TYPE/ DESCRIPTION:	QTY.:	PG.
A. ILLUM. FACE-LIT REMOTE CHANNEL LETTERS	ONE (1)	5
B. ILLUM. FACE-LIT CH LTRS on CUSTOM ROOF FRAMING/MTG STRUCTURE	ONE (1)	7
C. ILLUM. FACE-LIT REMOTE CHANNEL LETTERS	ONE (1)	11
D. ILLUM. FACE-LIT, D/F BLADE SIGN w/ 'WFM LOGO'	ONE (1)	13

PROJECT:

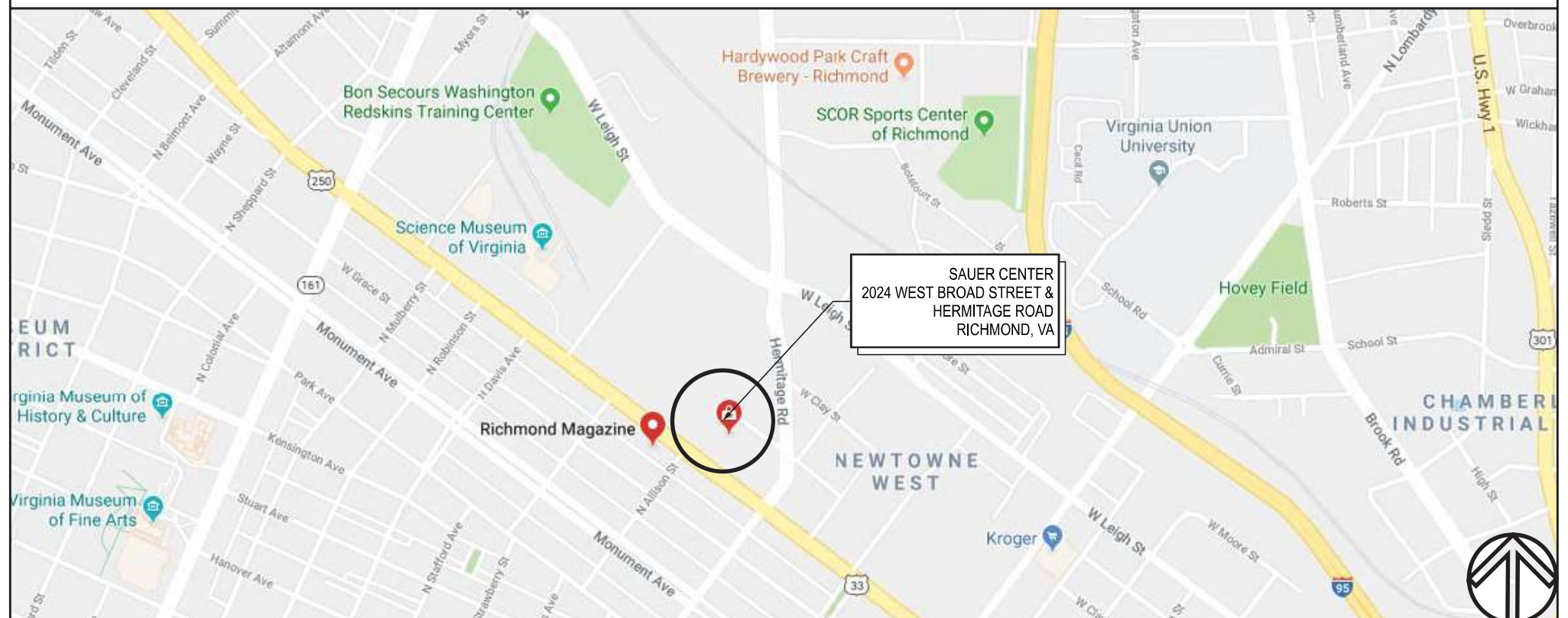


SAUER CENTER
2024 WEST BROAD STREET & HERMITAGE ROAD
RICHMOND, VA 23220

REVISIONS

#	DATE	DB	NOTES
R1	5.29.2018	JH	-UPDATED SIGN D - BLADE SIGN MOUNTING/SECTION DETAIL.

VICINITY MAP



TRIANGLE
SIGN & SERVICE

CLIENT & LOCATION



SAUER CENTER
2024 WEST BROAD STREET &
HERMITAGE ROAD
RICHMOND, VA 23220

LEAD NO.
172762 R1
SALESMAN
B. NETHEN

DATE
5.22.2018
DRAWN BY
JJH

REVIEWED BY
SEG. NO.

REVISION

SHEET NO.

1 of 15

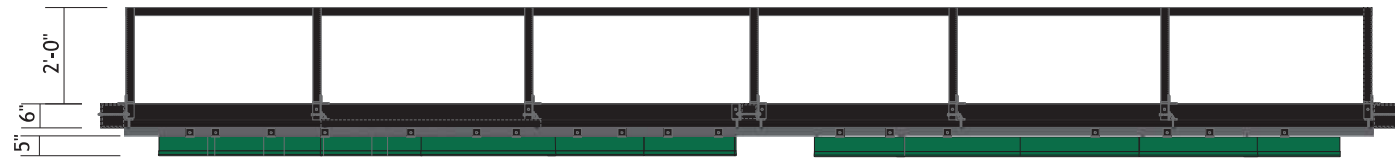
ILLUM. FACE-LIT CH LTRS on CUSTOM ROOF FRAMING/MTG STRUCTURE

B

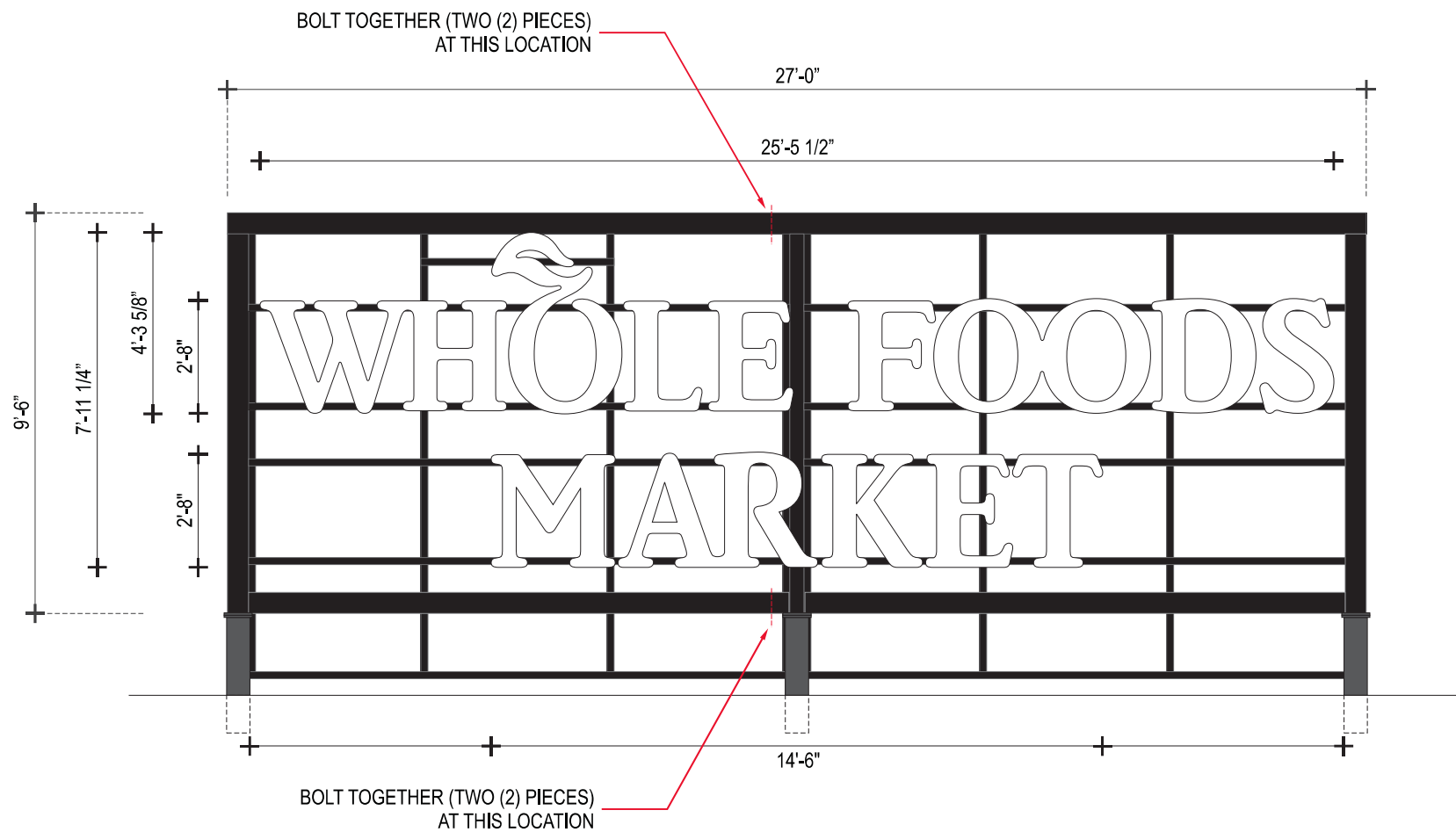
SCALE: 1/4"=1'-0"

QTY.: ONE (1)

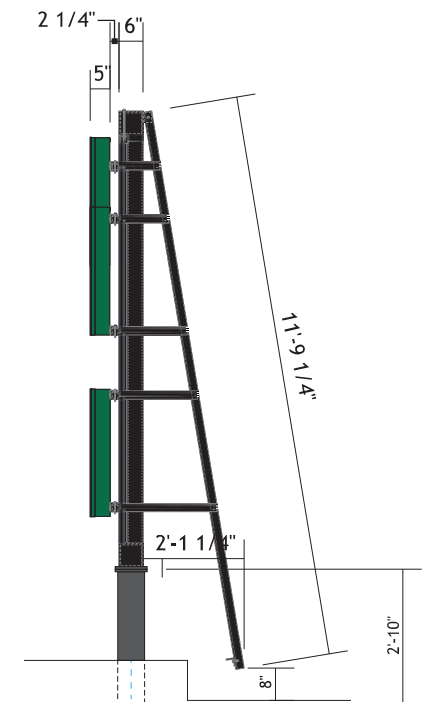
AREA: 95.25' x 305.50' = 202.07' \square



PLAN (B.3)



TYP. FRONT (B.1)



TYP. SIDE (B.2)

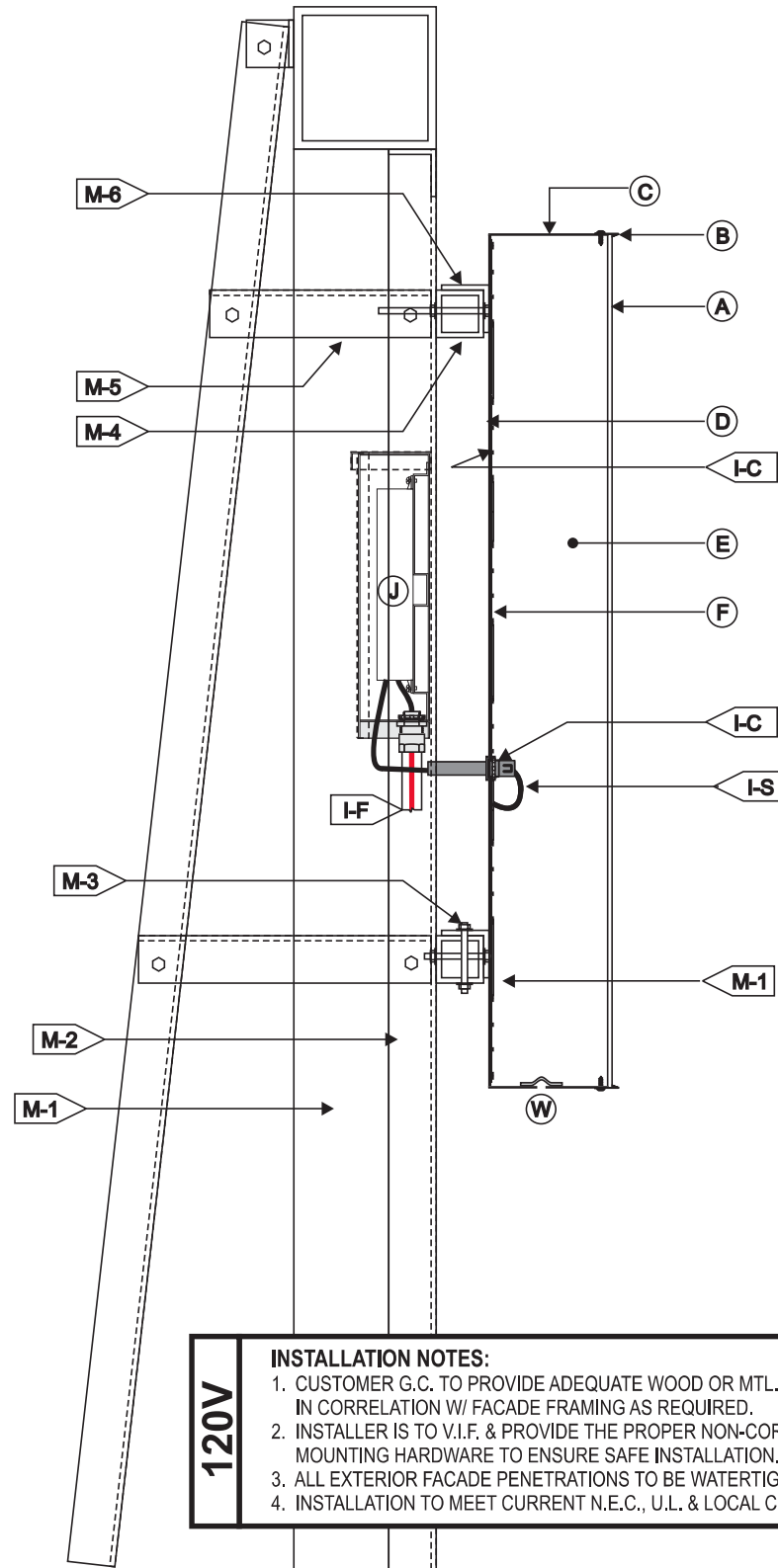
PAINTED TO MATCH PMS #7727 C	BLACK GALVANIZED STEEL FINISH

TRIANGLE SIGN & SERVICE	CLIENT & LOCATION WHOLE FOODS MARKET	SAUER CENTER 2024 WEST BROAD STREET & HERMITAGE ROAD RICHMOND, VA 23220		LEAD NO. 172762 R1	DATE 5.22.2018	REVIEWED BY	REVISION	SHEET NO. 7 of 15
		SALESMAN B. NETHEN	DRAWN BY JJH	SEG. NO.				
11 AZAR COURT • P.O. BOX 24186 • BALTIMORE, MARYLAND 21227 • T: 410-247-5300 • F: 410 247-1944 • REPRODUCTION IN WHOLE OR PART PROHIBITED WITHOUT EXPRESS PERMISSION OF TRIANGLE S & S • WWW.TRIANGLESIGN.COM								

ILLUM. FACE-LIT CH LTRS on CUSTOM ROOF FRAMING/MTG STRUCTURE - SECTION DETAIL

B-1

SCALE: NTS



(A) FACE	
MATERIAL:	3/16" PLEX.
BORDER:	N/A
VINYL:	N/A
COLOR INFO.:	N/A
(B) TRIMCAPS	
SIZE / FINISH	1" / MATCH RETURNS
(C) RETURNS	
DEPTH:	5"
MATERIAL:	ALUM. .040
COLOR:	PAINTED TO MATCH PMS #7727 C
FINISH:	SATIN
(D) BACKS:	
MATERIAL:	3MM ACM
COLOR/FINISH:	WHITE SATIN
(E) INSIDE OF CAN	
COLOR:	PRE-COAT WHITE
(F) ILLUMINATION:	
TYPE:	STANDARD 6500K WHITE LEDS

(I) WIRING	
I-C	7/8" DIA. HOLE @ LEXAN W/ PAIGE WALL BUSTER CONNECTOR & CONDUIT.
I-F	TO ELECTRICAL FEED
I-S	U.L. APPROVED LOW VOLTAGE CLASS II WIRING
ALL CONNECTIONS TO BE IN WATERPROOF BOXES	
(J) POWER SUPPLY	
TYPE:	REMOTE LED POWER SUPPLY HOUSE IN FRONT
ACCESS WEATHER-PROOF LED POWER SUPPLY BOX.	
VOLTAGE:	120V
(M) MOUNTING SEE MOUNTING NOTE.	
M-1	4" x 4" STEEL SQUARE TUBE
M-2	2" x 2" STEEL ALUM. ANGLE
M-3	THRU BOLTS, w NUTS & WASHERS, AS NECESSARY
M-4	2" x 2" STEEL SQUARE TUBE
M-5	2" x 2" STEEL ALUM. ANGLE
M-6	2" x 2" STEEL ALUM. ANGLE CLIPS, WELDED TO CH LTRS
(W) WEEP HOLES: 1/4" DIA. WITH COVER	

120V

INSTALLATION NOTES:

1. CUSTOMER G.C. TO PROVIDE ADEQUATE WOOD OR MTL. BLOCKING IN CORRELATION W/ FACADE FRAMING AS REQUIRED.
2. INSTALLER IS TO V.I.F. & PROVIDE THE PROPER NON-CORROSIVE MOUNTING HARDWARE TO ENSURE SAFE INSTALLATION.
3. ALL EXTERIOR FACADE PENETRATIONS TO BE WATERTIGHT.
4. INSTALLATION TO MEET CURRENT N.E.C., U.L. & LOCAL CODES.

ELECTRICAL NOTES:

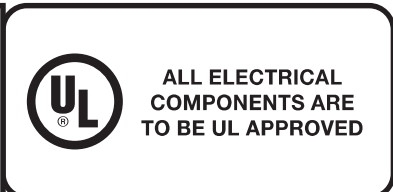
1. ALL ELEC. COMPONENTS TO BE U.L. APPROVED.
2. CUSTOMER IS RESPONSIBLE FOR ONE (1) 120v/ 20a DEDICATED CIRCUIT w/ GROUND PER SIGN TO WITHIN 6' OF SIGN.
3. LOCKOUT SWITCH INSTALLED @ PANEL BOX FOR ALL ELEC. SIGNS.
4. INSTALL IN ACCORDANCE w/ N.E.C. ARTICLE 600 &/ OR LOCAL CODES. THIS INCLUDES PROPER GROUNDING & BONDING OF SIGN.

FABRICATOR NOTES:

1. PLACEMENT OF LIGHTING ELEMENTS FOR OPTIMUM ILLUMINATION OF SIGN TO BE DETERMINED IN PRODUCTION.
2. MANUFACTURER & U.L. LABELS TO BE APPLIED & VISIBLE FROM THE GROUND, ON THE LAST CHANNEL LETTER OR END OF THE SIGN BOX.

NOTE: A LOCK OUT AT THE PANEL BOX TO BE INSTALLED FOR ALL ELECTRONIC SIGNS

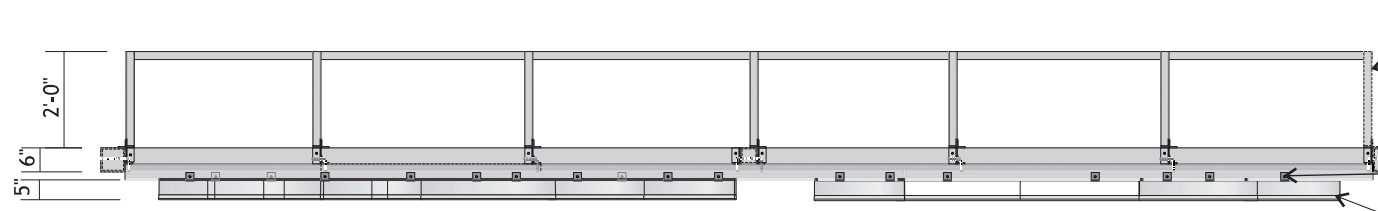
NOTE: MANUFACTURER & UL LABELS APPLIED & VISIBLE FROM GROUND, LOCATED ON LAST LETTER (AT A MINIMUM) OR END OF BOX SIGN OR END OF FREESTANDING SIGN.



ILLUM. FACE-LIT CH LTRS on CUSTOM ROOF FRAMING/MTG STRUCTURE - CONSTRUCTION DETAILS

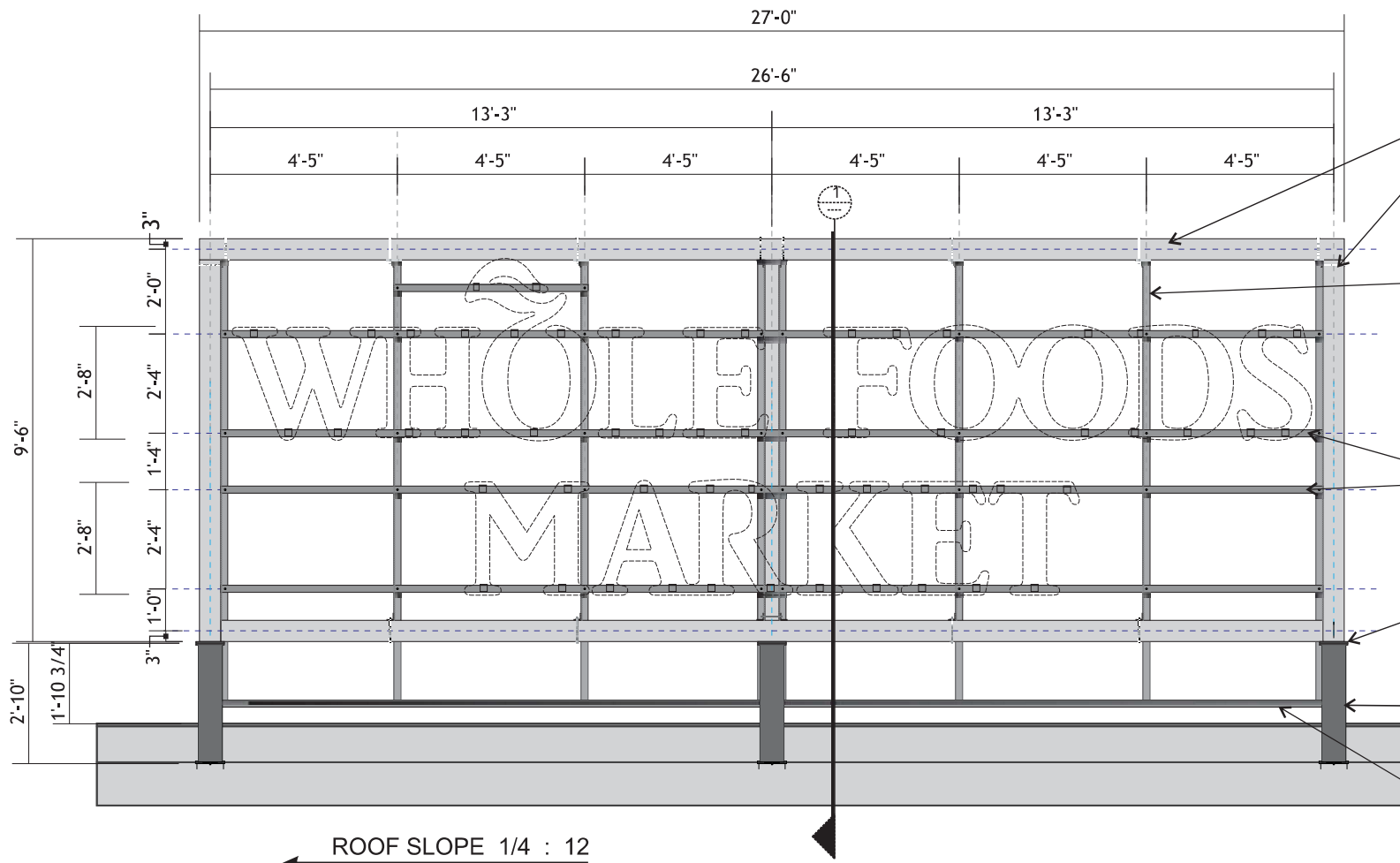
B-2

SCALE: 1/4"=1'-0"



PLAN VIEW

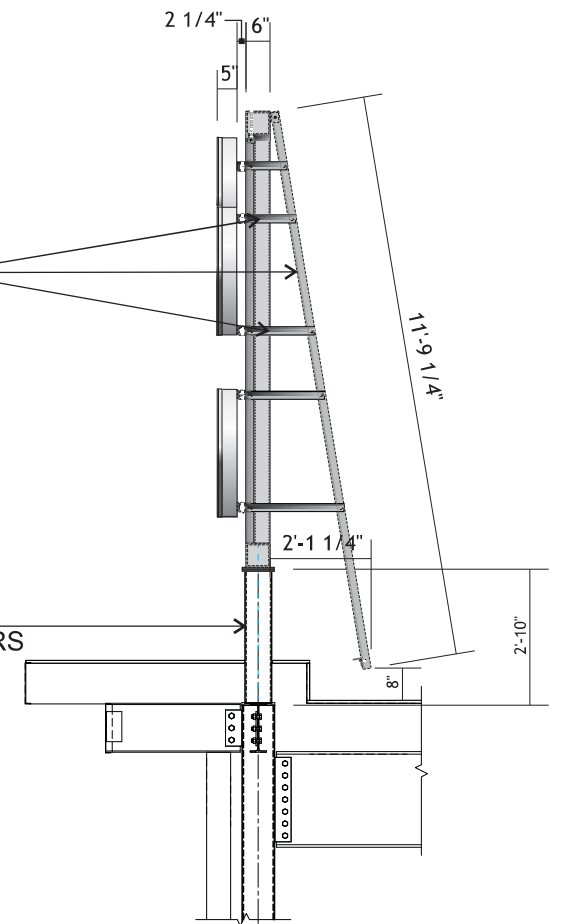
- DECORATIVE ALUMINUM ANGLE FRAMING KICK BACKS AT EACH 2x2 VERTICAL ANGLE SUPPORT
- 6" x 6" STEEL SQUARE TUBE MAIN FRAME, WELDED CONSTRUCTION,.
- 2x2 ALUMINUM ANGLE CLIPS FOR MOUNTING LETTERS TO 2x2 ALUM. SQUARE TUBE SUPPORTS WITH MECHANICAL FASTENERS AS NEEDED.
- INTERNALLY LIT CHANNEL LETTERS
FACE: WHITE
TRIM: 1" JEWELITE PAINTED TO MATCH PMS #7727 C / SATIN
RETURNS: 5" DEEP, .063" ALUM. TO MATCH PMS #7727 C / SATIN
ILLUMINATION: WHITE LEDS w/ POWER SUPPLIES



S/F ROOF TOP SIGN ELEVATION

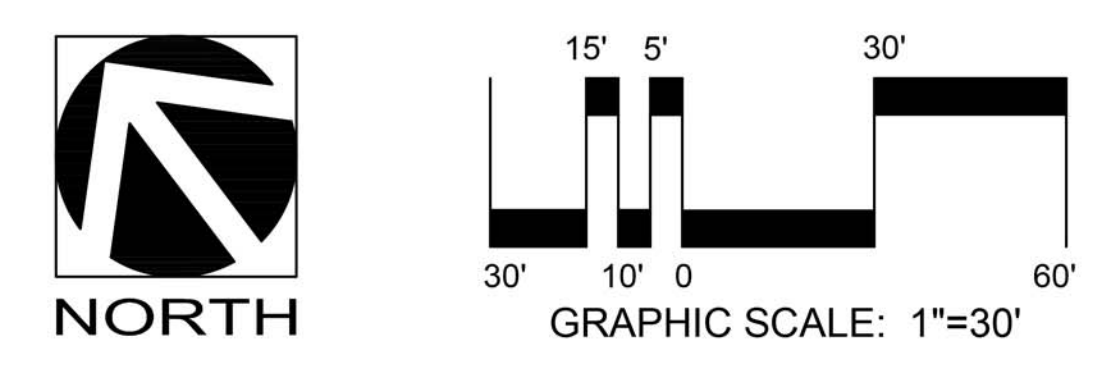
- 6" x 6" STEEL SQUARE TUBE MAIN FRAME, WELDED CONSTRUCTION,.
- 2" x 2" ALUMINUM ANGLE VERTICAL SUPPORTS, PAINTED. BOLTED TO STEEL MAIN FRAME SO FACE OF ANGLE IS FLUSH WITH FACE OF 6X6 MAIN FRAME.
- DECORATIVE ALUMINUM ANGLE FRAMING AND KICK BACKS AT EACH 2x2 VERTICAL ANGLE SUPPORT
- 2" x 2" ALUMINUM SQUARE TUBE HORIZONTAL LETTER SUPPORTS, BOLTED TO FACE OF VERTICAL 2x2 ANGLE. .
- 6x6 STEEL SQUARE TUBE MAIN FRAME TO BE MOUNTED WITH 1/2x8x8 STEEL CAP AND MATCHING PLATES TO 8X8 STUB OUTS, (3) AT 13'-3" O.C. / VERIFY IN FIELD
- PIPE 6 x-STRONG GALV SIGN SUPPORT STUB BY OTHERS
- CONTINUOUS HORIZONTAL 2x2 ALUMINUM ANGLE

ALL FRAME AND GRID STRUCTURE TO BE PAINTED, BLACK, w/ GALVANIZED STEEL FINISH



TYP SECTION VIEW

	CLIENT & LOCATION 	SAUER CENTER 2024 WEST BROAD STREET & HERMITAGE ROAD RICHMOND, VA 23220	LEAD NO. 172762 R1	DATE 5.22.2018	REVIEWED BY	REVISION	SHEET NO.
		B. NETHEN	DRAWN BY JJH	SEG. NO.	9 of 15		

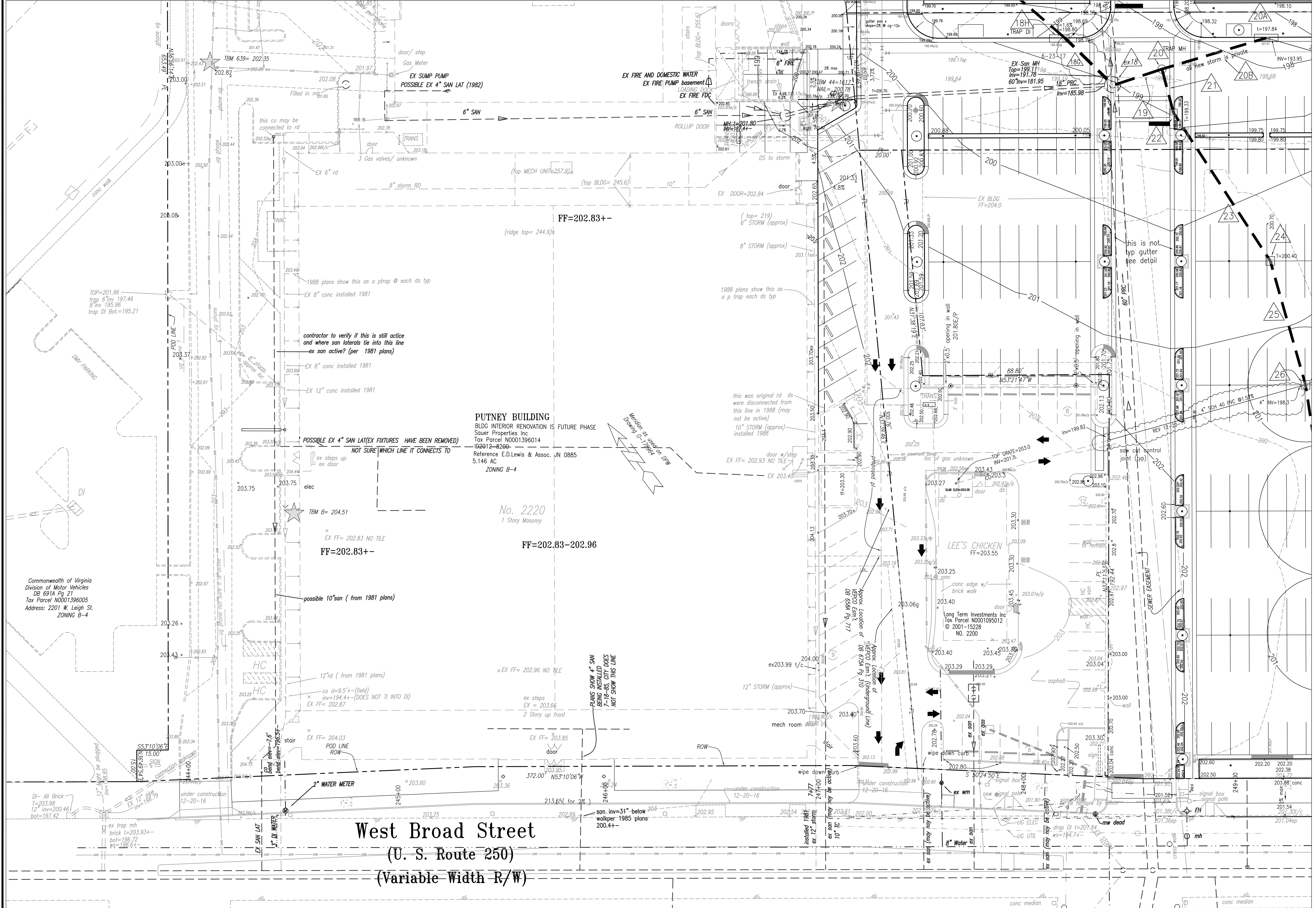


THE SAUER CENTER · illustrative master plan

2020 & 2022 & 2024 WEST BROAD STREET · CITY OF RICHMOND · VIRGINIA
 DEVELOPER: SAUER PROPERTIES, INC. · 2000 WEST BROAD STREET · RICHMOND · VIRGINIA · APRIL 10, 2018



SEE S-3



West Broad Street
 (U. S. Route 250)
 (Variable Width R/W)

PUTNEY BUILDING
 BLDG INTERIOR RENOVATION IS FUTURE PHASE
 Sauer Properties Inc.
 Tax Parcel N0001396014
 ID2012-8290
 Reference E.D.Lewis & Assoc. JN 0885
 5.146 AC
 ZONING B-4

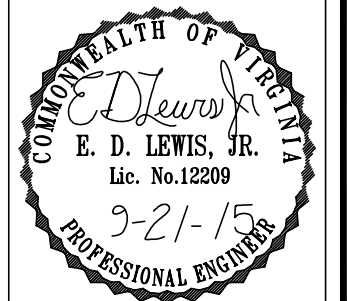
LEE'S CHICKEN
 FF=203.55

Commonwealth of Virginia
 Division of Motor Vehicles
 DB 691A Pg 21
 Tax Parcel N0001396005
 Address: 2201 W. Leigh St.
 ZONING B-4

SEE S-2

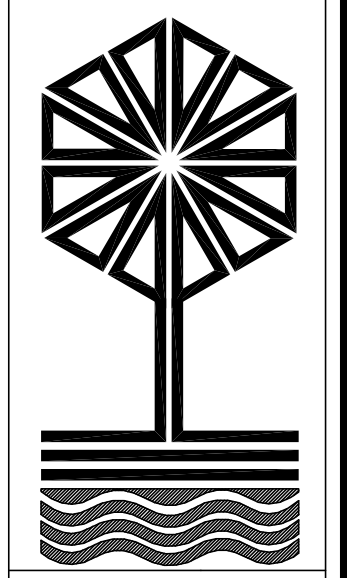
E.D. LEWIS & ASSOCIATE S.P.C.
 Consulting Engineers - Land Surveyors & Planners
 2116 Spencer Road - Richmond, VA 23230
 Phone: (804)285-3948 Fax: (804)282-1280

THE SAUER CENTER
 CITY OF RICHMOND, VA.
SITE PLAN

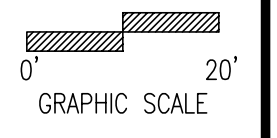


DATE: 9-21-15
 SCALE: 1"=20'
 DESIGNED: ML/JL
 DRAWN: ML
 CHECKED: ML

REVISIONS: 4-21-17 P-23-17
 11-30-17 DRAIN LEES
 12-20-17 DRAIN LEES
 1-3-17 Lee's



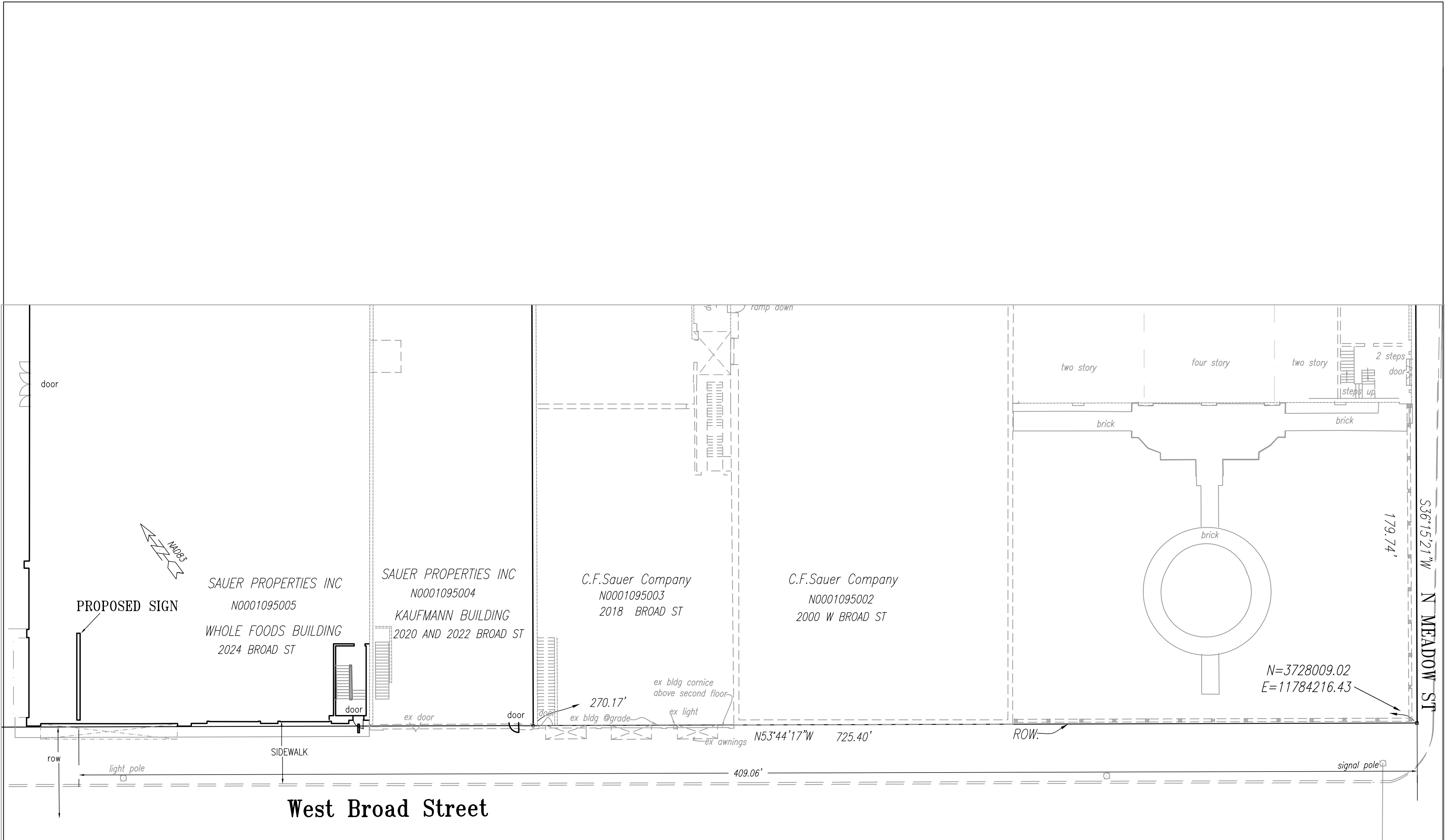
JN 21692
 S-1



F:\DWG\21692 Sauer\SITE PLAN\21692 site.dwg, 1/8/2018 8:27:48 AM, MONIE

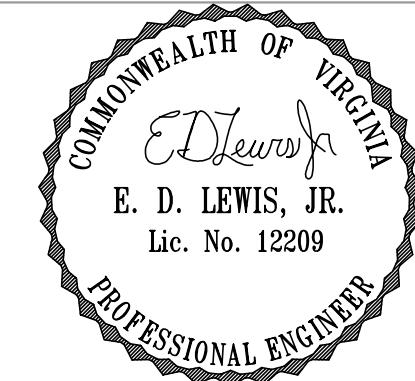
© E.D. LEWIS AND ASSOCIATES, P.C. EXPRESSLY RESERVES ITS COMMON LAW COPYRIGHT AND OTHER PROPERTY RIGHTS IN THESE PLANS. THESE PLANS ARE NOT TO BE REPRODUCED, CHANGED OR COPIED IN ANY FORM OR MANNER WHATSOEVER, NOR ARE THEY TO BE ASSIGNED TO ANY THIRD PARTY WITHOUT FIRST OBTAINING THE EXPRESS WRITTEN PERMISSION AND CONSENT OF E.D. LEWIS AND ASSOCIATES, P.C.

F:\DWGS\21692 Sauer\plats\ENC\ROACHMENTS\2024 W Broad st. WHOLE FOOD SUP SIGN.dwg, 10/4/2018 5:12:54 PM, MONTE



West Broad Street

S36°15'21"W N MEADOW ST



PLAT FOR SUP FOR ROOF SIGN AT 2024 W. BROAD ST., PARCEL N0001095005 SAUER PROPERTIES INC IN THE CITY OF RICHMOND, VA.

