

FONTICELLO PARK: PAVILION RENOVATION & NEW SPLASHPAD

2813 Bainbridge Street Richmond, VA 23225



PURPOSE

Project includes the renovation and accessible upgrades to the existing park pavilion. Adjacent site improvements include:

- **ACCESSIBLE WALKS TO PAVILION.** The existing asphalt drive is closed to vehicular traffic and is the predominant north-south pedestrian walkway through the park. New walkways will provide barrier free access from the asphalt walk to the pavilion and adjacent site amenities.
- **SPLASHPAD.** Envisioned as a memorial to Markiya Dickson who was shot and killed in the park in 2019. The splashpad will be part of the Markiya Dickson Imagination Zone that includes the newly installed playground equipment. The design of the splashpad takes inspiration from the pinwheels that were part of temporary memorial at the time of her vigil. The overall color palette ties together the pavilion exterior paint colors, the new playground equipment, new park signage and Markiya’s favorite color, pink. The splashpad will be constructed using a variety of ground-mounted nozzles, creating an interactive experience on a timed cycle that celebrates Markiya’s love of song and dance. The splashpad will not have any overhead sprayers or structures due to the Parks & Recreation’s maintenance requirements. As an independent system (not connected with a community swimming pool), the splashpad will be open dawn to dusk and will be operated as a pass-through system using a push button mounted on the exterior of the pavilion.
- **SITE FURNISHINGS:** Site furnishings include drinking fountains, benches, bike racks, and trash/recycling receptacles. Site furnishings are to match others recently installed in city parks.
- **PLANTING:** New planting includes native flowering redbud trees which bloom in Markiya’s favorite color, and a matrix of native grasses perennials that provide seasonal interest.
- **EXISTING PAVILION:** Renovations to the existing pavilion structure include remediation of lead based paint present, updating the existing exterior and bathroom spaces to make it ADA compliant, upgrading the interior bathroom fixtures, and updating the existing window openings.

BACKGROUND

A master plan was completed in 2019 for the park. Although the splashpad location is not in the exact location of the master plan, it is in keeping with the program intent and adjacencies of the long-range plan. The splashpad is located directly adjacent to the pavilion to take advantage of the water, sanitary, and power utilities already available in that area.

- **ESTIMATED START DATE:** TBD

COMMUNITY INVOLVEMENT

The design team has met directly with the community group Friends of Fonticello to present the design concept and record feedback on 11/06/23. The meeting yielded passionate feedback, which was then incorporated, where possible, into the final design. An additional meeting was held with the community on 01/16/24 where DPR staff shared an update on the project.

- **ACCESSIBILITY.** Desire for a fully accessible pavilion and splashpad was communicated. The final design includes two accessible pathways, one to the west leading to the playground and parking along W 28th Street and one to the south leading to parking along Bainbridge Street. The third pathway leading to the east offers a connection to the pavilion from the existing ballfields and future park improvements. The design allows for the future addition of an accessible ramp to traverse the steeper grade.
- **HISTORIC BRICK.** To maintain accessible pathways to the pavilion, preserving the historic brick pathways is not possible. The design team instead proposes a band of new brick to wrap the perimeter of the pavilion.
- **NATIVE PLANTS.** The community expressed interested in additional fully native plantings.

UDC CONCEPT REVIEW

The design team presented the design concept to a UDC Concept review on 11/07/23. The UDC Concept Review yielded the following feedback, which was then incorporated, where possible, into the final design.

- **PLANT PALETTE.** The UDC committee asked for a selection of native grasses to be included alongside the native trees. In the final design, two planting beds containing a matrix of native grasses and perennials flank the main walkway to the south.
- **BRICK.** Interest in the historic brick was once again discussed. The UDC Committee suggested incorporating new brick as a nod to the history of the site. The final design proposes a band of new brick to wrap the perimeter of the pavilion.
- **FURNITURE.** The UDC Committee questioned if the selection of site furnishings matched the nature of rest of the design. The design team discussed this with DPR and concluded that consistency of the site furnishings among city parks is important. Both the color selection and style are preferred by DPR.

BUDGET

A budget has been set aside by the Department of Parks and Recreation for a series of park-wide improvements that align with the masterplan. The funding for this park improvement comes from that overall budget. The materials and labor for the pavilion roof is donated by a community member.

- **COST ESTIMATE:** The estimate of cost for the overall project including pavilion renovations, new splashpad construction, site improvements, and native planting is \$890,500.

FINAL CONCEPTUAL MASTER PLAN

KEY

1. REFURBISHED PAVILION
2. PLAZA WITH OVERHEAD STRUCTURE
3. AMPHITHEATER AND STAGE
4. PUBLIC ART AND MEMORIAL SPACE
5. MARKIYA DICKSON IMAGINATION ZONE: SPLASH PAD
6. MARKIYA DICKSON IMAGINATION ZONE: PLAYGROUND AREA (2-5 YR. & 5-12 YR.)
7. RELOCATED BASKETBALL COURTS
8. EXISTING BASEBALL FIELDS
9. EXISTING SKATE PARK
10. EXPANDED SKATE PARK
11. FONTICELLO SPRING AND PLAZA
12. REFURBISHED PUMP HOUSE
13. NATIVE PLANT & POLLINATOR GARDEN
14. GARDEN PATH
15. SIDEWALK
16. MULTIUSE PATHWAY
17. LOOP TRAIL
18. SKATE SPOT
19. RUNNING TRAIL
20. OPEN LAWN
21. PICNIC SHELTERS
22. RAIN GARDEN / BIORETENTION AREA
23. PEDESTRIAN BOLLARDS
24. VEHICULAR ENTRANCE WITH BOLLARDS
25. EXISTING ROAD
26. LOOP DRIVE
27. UTILITY AREA AND CELL TOWER
28. STORAGE AREA FOR LANDSCAPE MATERIALS
29. FONTICELLO FOOD FOREST
30. FOOD FOREST PATH





Markiya Dickson was a vibrant nine-year-old lover of song and dance. She was tragically shot and killed in Fonticello Park in May 2019, an event which has since inspired community groups and initiatives to revitalize and establish safety measures in the park. The symbol of a pink pinwheel can be found around the park as a reminder of her memory.

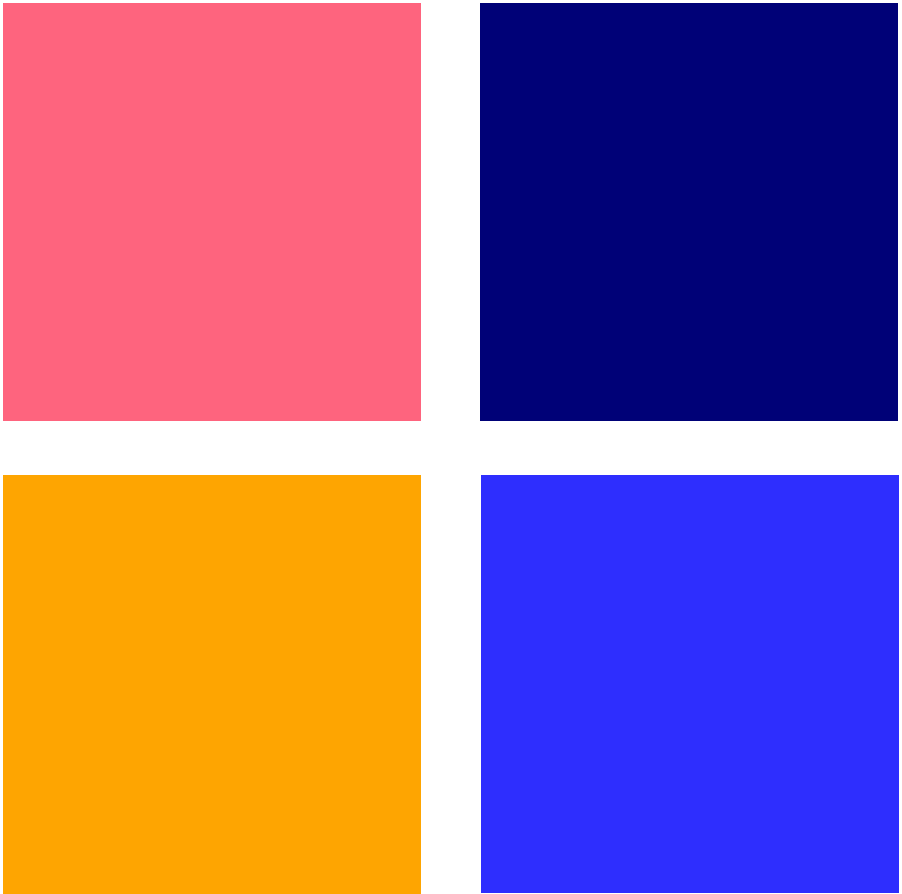
PLAYGROUND

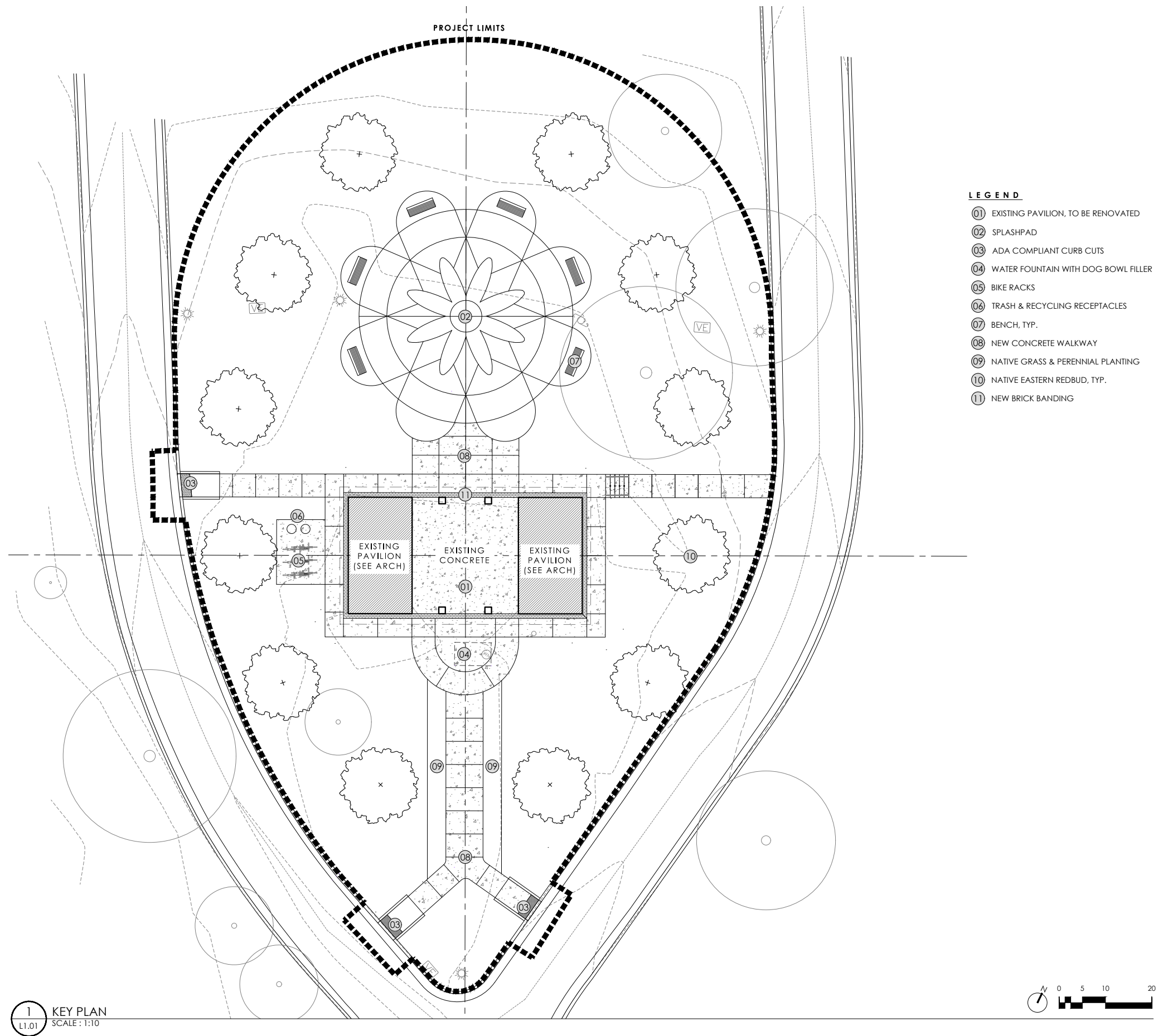


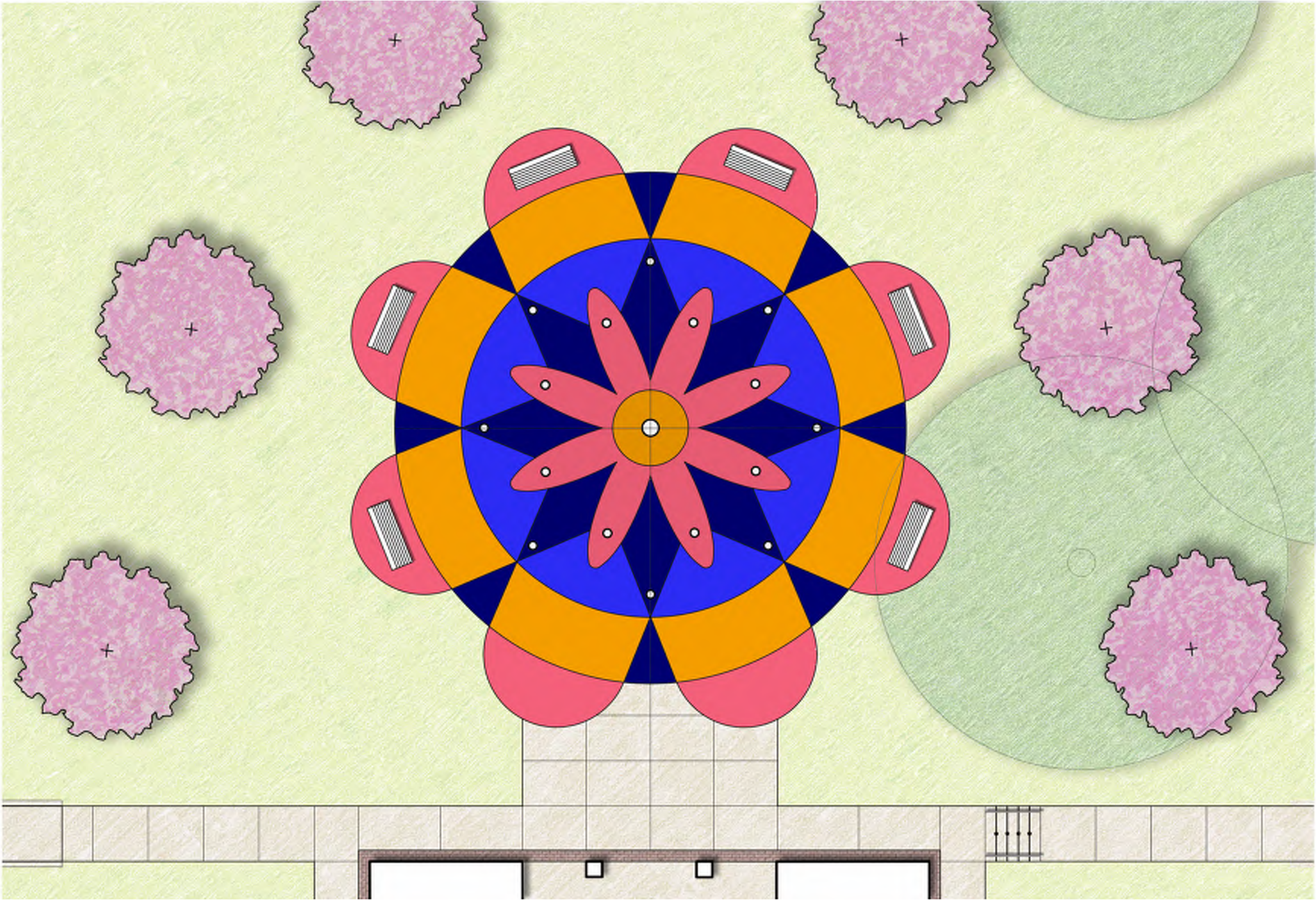
PAVILION



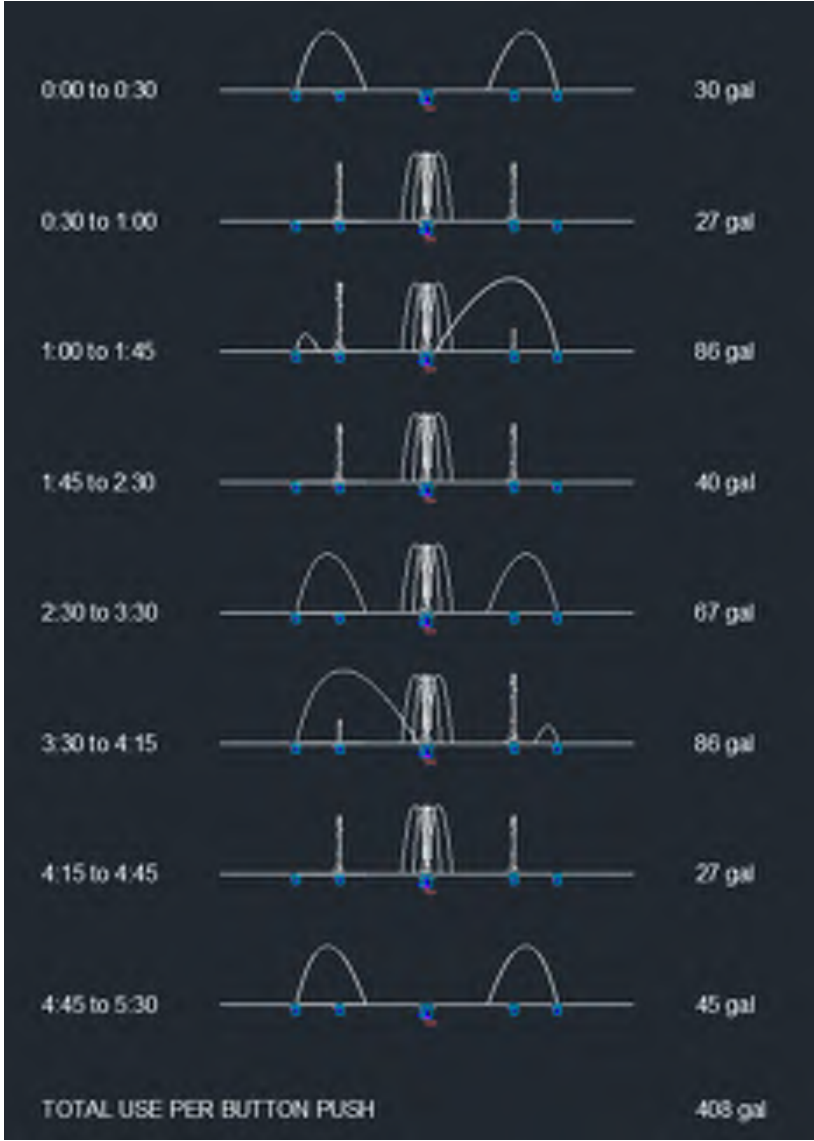
SPLASHPAD FLOORING



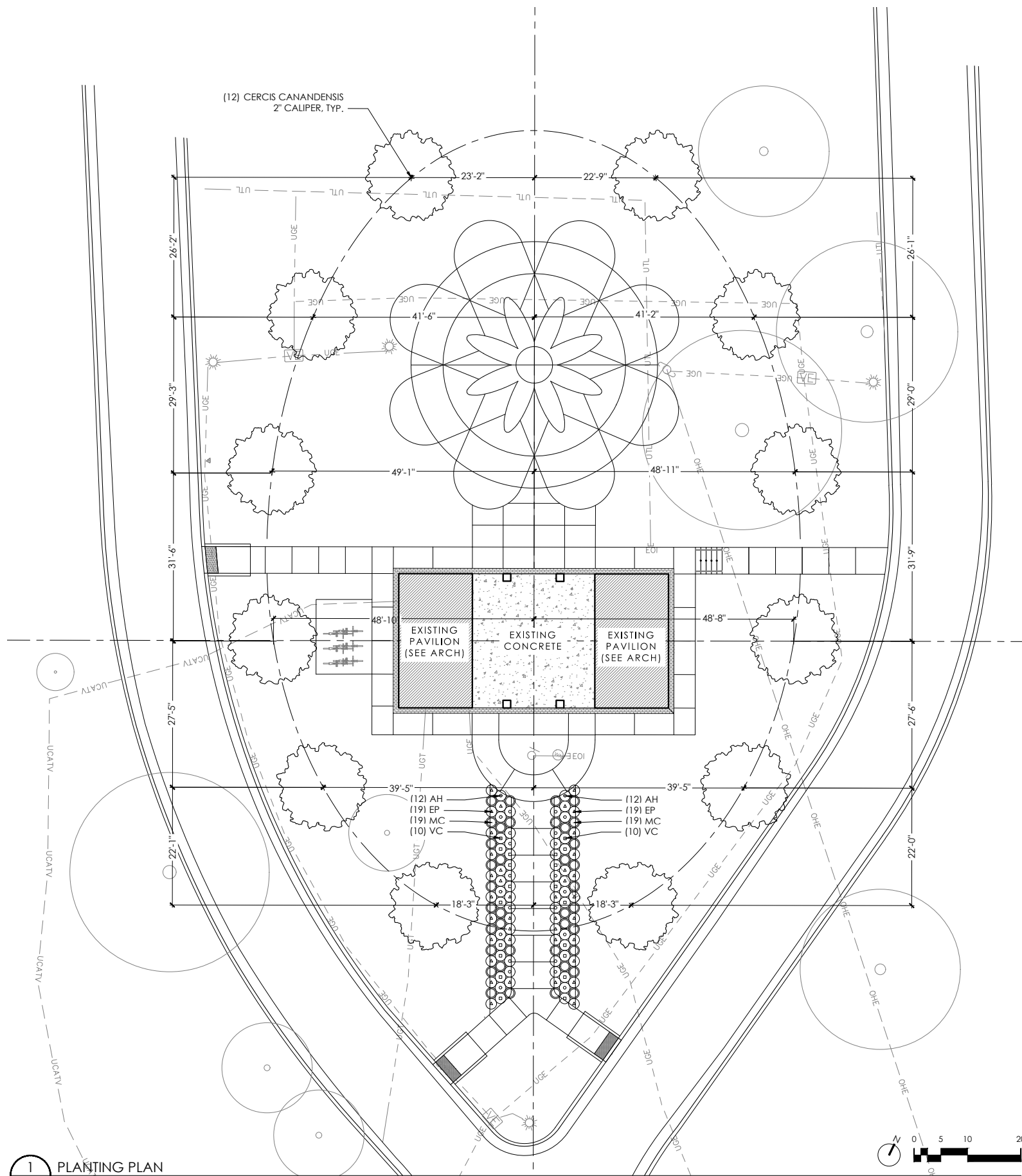




SPLASHPAD. The splashpad features four bright colors, referencing Markiya’s favorite color pink, and coordinate with the colors of the existing playground and proposed pavilion. Arranged in a pinwheel shape, a large center jet orchestrates in tandem with the two outer rings of jets spraying water inward during a timed 5-minute sequence. The orange ring demarcates a 6-foot dry zone around the water play area.



Nozzle program sequence and water usage



Cercis canadensis, spring



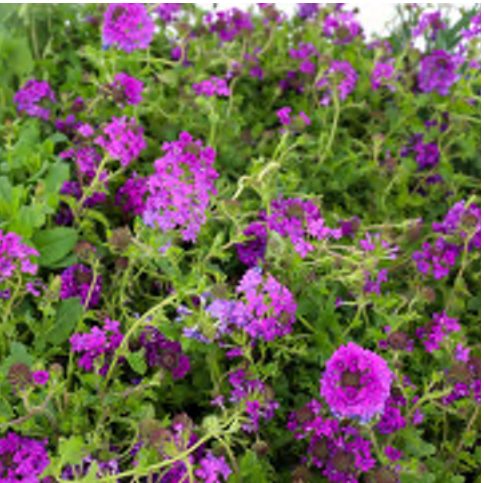
Muhlenbergia capillaris



Amsonia hubrichtii



Cercis canadensis, fall



Verbena canadensis,
'Homestead Purple'

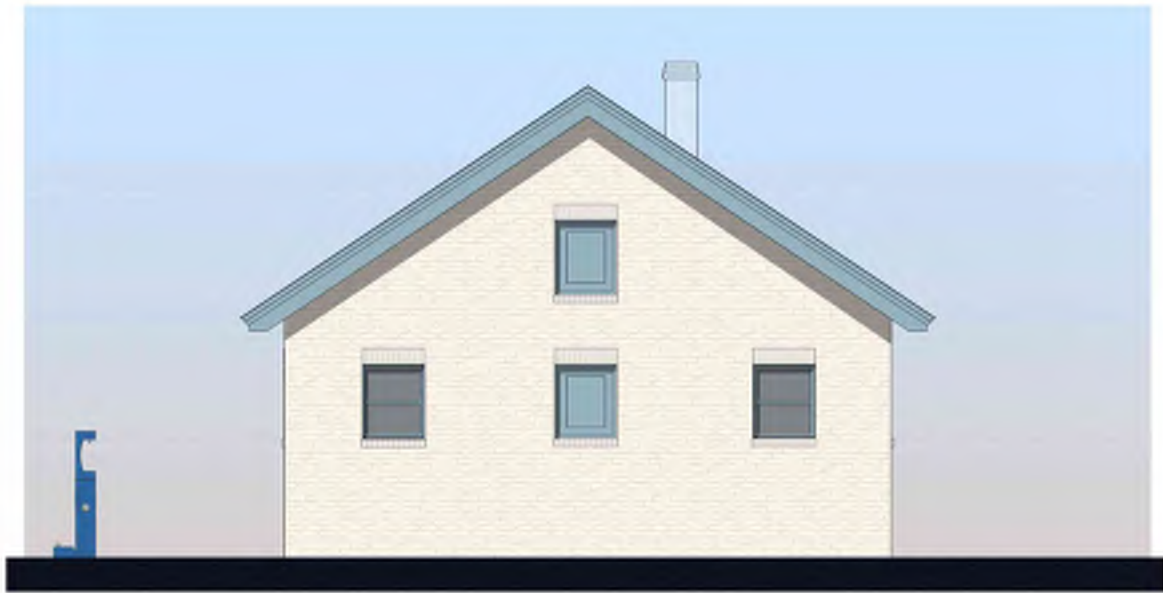


Echinacea purpurea

PLANTING. The planting features 12 native Eastern Redbud trees arranged in an ellipse around the splashpad and pavilion. Flanking the main path to the south, two planting beds hold a matrix of low-maintenance native grasses and perennials that prioritize color, texture, and seasonal interest.

The maintenance of this proposed planting is covered through the current maintenance plan for the park.

PLANT SCHEDULE							
QTY.	SYMBOL	Scientific Name	Common Name	Size	Spacing	Root	Notes
TREES							
12	CC	<i>Cercis canadensis</i>	Native Eastern Redbud	2 1/2" Cal.	AS SHOWN	B&B	
GROUNDCOVERS & PERENNIALS							
24	AH	<i>Amsonia hubrichtii</i>	Threadleaf Bluestar	1 Gal.	24" O.C.		24-36" HEIGHT
20	VC	<i>Verbena canadensis</i> 'Homestead Purple'	Purple Verbena	1 Gal.	24" O.C.		10-12" HEIGHT
38	EP	<i>Echinacea purpurea</i>	Purple Coneflower	1 Gal.	24" O.C.		24-48" HEIGHT
38	MC	<i>Muhlenbergia capillaris</i>	Pink Muhly Grass	1 Gal.	24" O.C.		36-48" HEIGHT



Pavilion East Elevation



Pavilion North Elevation

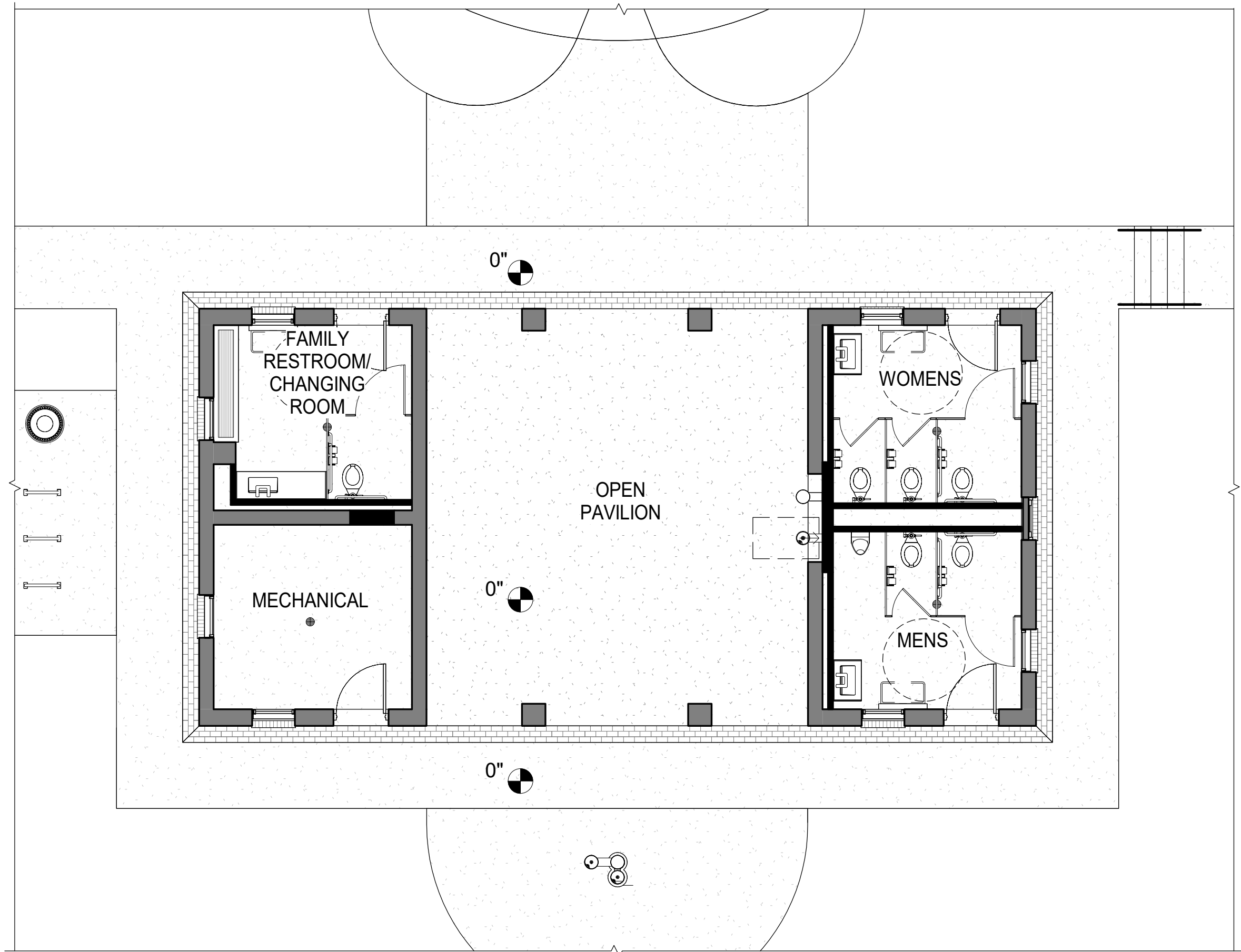
SPLASHPAD TOUCH
SENSOR ACTIVATOR



Pavilion West Elevation



Pavilion South Elevation



S P E C I F I C A T I O N S

PRODUCT SPECIFICATIONS

Elkay Outdoor ezH2O® Bottle Filling Station Bi-Level, Pedestal with Pet Station Non-Filtered Non-Refrigerated. Features shall include 316 Stainless, Laminar Flow, Heavy Duty Vandal Resistant, Pet Fountain. Furnished with Vandal Resistant bubbler. Mechanical Front Bubbler Button activation. Product shall be Floor Mount/Freestanding, for Outdoor applications, serving 2 station(s). Unit shall be lead-free design which is certified to NSF/ANSI 61 & 372 (lead free) and meets Federal and State low-lead requirements.

Special Features:	316 Stainless, Laminar Flow, Heavy Duty Vandal Resistant, Pet Fountain
Finish:	Beige (BGE), Black (BLK), Blue (BLU), Brown (BRN), Evergreen (EVG), Gray (GRY), Orange (ORN), Purple (PUR), Red (RED), Terracotta (TER), White (WHT), Yellow (YLW)
Power:	No Electrical Required
Bubbler Style:	Vandal Resistant
Activation by:	Mechanical Front Bubbler Button
Mounting Type:	Floor Mount/Freestanding
Chilling Option:	Non-refrigerated
Dimensions (L x W x H):	26" x 31" x 64"
Approx. Shipping Weight:	205 lbs.
Installation Location:	Outdoor
No. of Stations Served:	2

Special Note: Bottle Filler Stations 1 (Upper), Bubbler Stations 1 (Low), Choose from 12 color options

- Mechanically-Activated bubbler continues to supply water in event of service disruptions.
- Laminar flow provides clean fill with minimal splash.
- Base material constructed from marine-grade 316 stainless steel provides the ultimate corrosion protection from even the most corrosive elements.
- Pet Fountain: Features slow drainage for easy drinking.



AMERICAN PRIDE. A LIFETIME TRADITION.
Like your family, the Elkay family has values and traditions that endure. For almost a century, Elkay has been a family-owned and operated company, providing thousands of jobs that support our families and communities.



Included with Product: Outdoor Bottle Filler

PRODUCT COMPLIANCE

ADA & ICC A117.1

ASME A112.19.3/CSA B45.4

Buy American Act

GreenSpec®

NSF/ANSI 61 & 372 (lead free)



Complies with ADA & ICC A117.1 accessibility requirements when installed according to the requirements outlined in these standards. Installation may require additional components and/or construction features to be fully compliant. Consult the local Authority Having Jurisdiction if necessary.

[Installation Instructions \(PDF\)](#)

Warranty pertains to drinking water applications only. Non-drinking water applications are not covered under warranty.

[Warranty \(PDF\)](#)

OPTIONAL ACCESSORIES

LK4471LHB - Locking Hose Bib
97890C - Accessory - Direct Bury Adaptor

In keeping with our policy of continuing product improvement, Elkay reserves the right to change product specifications without notice. Please visit [elkay.com](#) for the most current version of Elkay product specification sheets. This specification describes an Elkay product with design, quality, and functional benefits to the user. When making a comparison of other producers' offerings, be certain these features are not overlooked.

Elkay REV 08312019
[LK4420BF1UDB](#)

2222 Camden Court
Oak Brook, IL 60523

© 2019 Page 1
LK4420BF1UDB_spec.pdf

PRODUCT SPECIFICATIONS

Elkay Outdoor ezH2O® Bottle Filling Station Wall Mount, Non-Filtered Non-Refrigerated. Features shall include 316 Stainless, Laminar Flow, Heavy Duty Vandal Resistant. Mechanical Front Bubbler Button activation. Product shall be Wall Mount (On Wall), for Outdoor applications, serving 1 station(s). Unit shall be lead-free design which is certified to NSF/ANSI 61 & 372 (lead free) and meets Federal and State low-lead requirements.

Special Features:	316 Stainless, Laminar Flow, Heavy Duty Vandal Resistant
Finish:	Beige (BGE), Black (BLK), Blue (BLU), Brown (BRN), Evergreen (EVG), Gray (GRY), Orange (ORN), Purple (PUR), Red (RED), Terracotta (TER), White (WHT), Yellow (YLW)
Power:	No Electrical Required
Bubbler Style:	No Bubbler
Activation by:	Mechanical Front Bubbler Button
Mounting Type:	Wall Mount (On Wall)
Chilling Option:	Non-refrigerated
Dimensions (L x W x H):	10" x 19-1/8" x 32"
Approx. Shipping Weight:	91 lbs.
Installation Location:	Outdoor
No. of Stations Served:	1

Special Note: Bottle Filler Stations-1, Choose from 12 color options

- Mechanically-Activated bubbler continues to supply water in event of service disruptions.
- Laminar flow provides clean fill with minimal splash.
- Base material constructed from marine-grade 316 stainless steel provides the ultimate corrosion protection from even the most corrosive elements.



AMERICAN PRIDE. A LIFETIME TRADITION.
Like your family, the Elkay family has values and traditions that endure. For almost a century, Elkay has been a family-owned and operated company, providing thousands of jobs that support our families and communities.

Included with Product: Outdoor Bottle Filler

PRODUCT COMPLIANCE

ADA & ICC A117.1

Buy American Act

GreenSpec®

NSF/ANSI 61 & 372 (lead free)



Complies with ADA & ICC A117.1 accessibility requirements when installed according to the requirements outlined in these standards. Installation may require additional components and/or construction features to be fully compliant. Consult the local Authority Having Jurisdiction if necessary.

[Installation Instructions \(PDF\)](#)

Warranty pertains to drinking water applications only. Non-drinking water applications are not covered under warranty.

[Warranty \(PDF\)](#)

OPTIONAL ACCESSORIES

LK4471LHB - Locking Hose Bib
97890C - Accessory - Direct Bury Adaptor

PART: _____ QTY: _____
PROJECT: _____
CONTACT: _____
DATE: _____
NOTES: _____
APPROVAL: _____

In keeping with our policy of continuing product improvement, Elkay reserves the right to change product specifications without notice. Please visit [elkay.com](#) for the most current version of Elkay product specification sheets. This specification describes an Elkay product with design, quality, and functional benefits to the user. When making a comparison of other producers' offerings, be certain these features are not overlooked.

PRODUCT SPECIFICATIONS

Elkay Outdoor Fountain Wall Mount, Non-Filtered Non-Refrigerated. Features shall include 316 Stainless, Heavy Duty Vandal Resistant. Furnished with Vandal Resistant bubbler. Mechanical Front Bubbler Button activation. Product shall be Wall Mount (On Wall), for Outdoor applications, serving 1 station(s). Unit shall be lead-free design which is certified to NSF/ANSI 61 & 372 (lead free) and meets Federal and State low-lead requirements.

Special Features:	316 Stainless, Heavy Duty Vandal Resistant
Finish:	Beige (BGE), Black (BLK), Blue (BLU), Brown (BRN), Evergreen (EVG), Gray (GRY), Orange (ORN), Purple (PUR), Red (RED), Terracotta (TER), White (WHT), Yellow (YLW)
Power:	No Electrical Required
Bubbler Style:	Vandal Resistant
Activation by:	Mechanical Front Bubbler Button
Mounting Type:	Wall Mount (On Wall)
Chilling Option:	Non-refrigerated
Dimensions (L x W x H):	14" x 19-1/8" x 8"
Approx. Shipping Weight:	41 lbs.
Installation Location:	Outdoor
No. of Stations Served:	1

- Mechanically-Activated bubbler continues to supply water in event of service disruptions.
- Base material constructed from marine-grade 316 stainless steel provides the ultimate corrosion protection from even the most corrosive elements.



AMERICAN PRIDE. A LIFETIME TRADITION.
Like your family, the Elkay family has values and traditions that endure. For almost a century, Elkay has been a family-owned and operated company, providing thousands of jobs that support our families and communities.

Included with Product: Outdoor Fountain

PRODUCT COMPLIANCE

ADA & ICC A117.1

ASME A112.19.3/CSA B45.4

Buy American Act

NSF/ANSI 61 & 372 (lead free)



Complies with ADA & ICC A117.1 accessibility requirements when installed according to the requirements outlined in these standards. Installation may require additional components and/or construction features to be fully compliant. Consult the local Authority Having Jurisdiction if necessary.

[Installation Instructions \(PDF\)](#)

Warranty pertains to drinking water applications only. Non-drinking water applications are not covered under warranty.

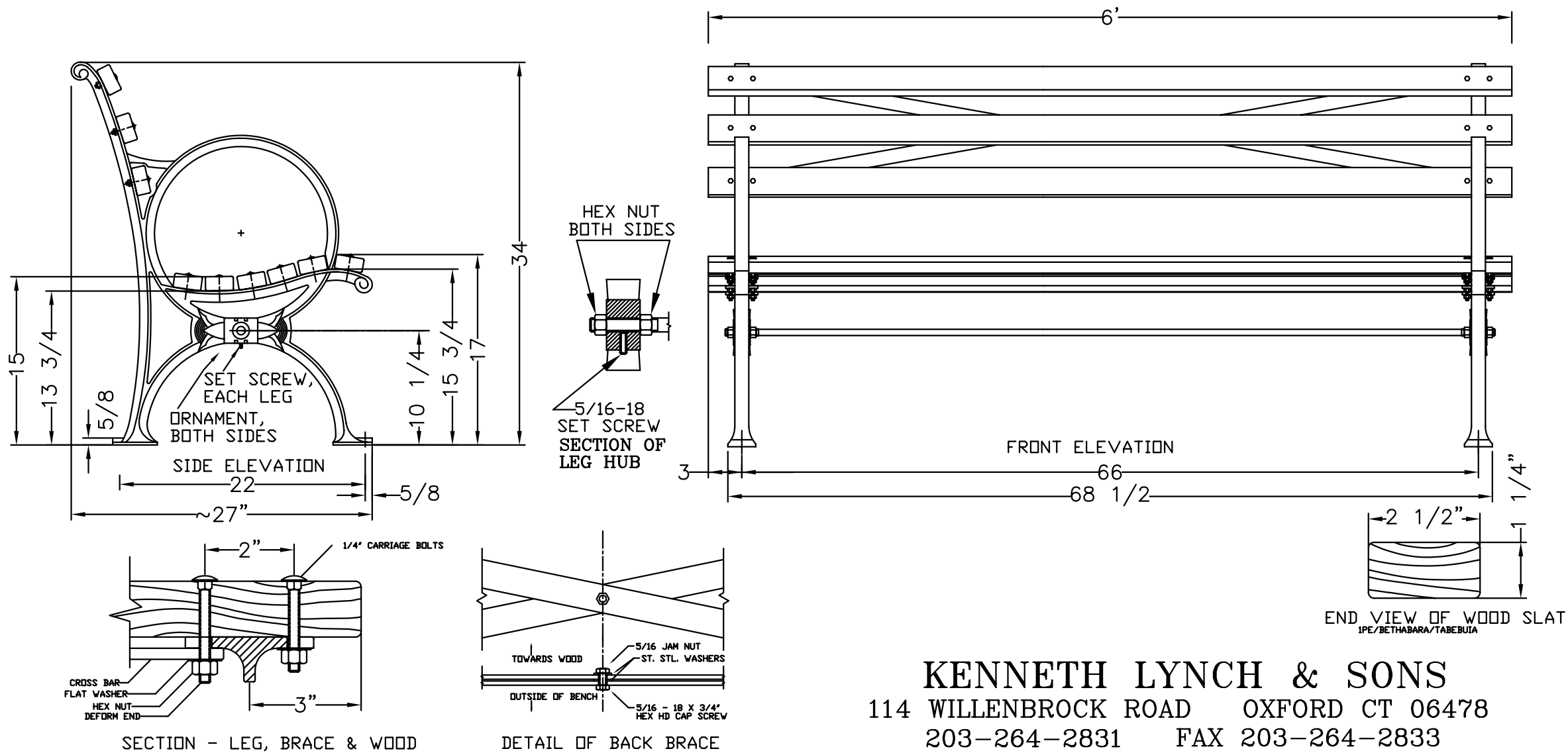
[Warranty \(PDF\)](#)

OPTIONAL ACCESSORIES

LK4471LHB - Locking Hose Bib
97890C - Accessory - Direct Bury Adaptor

PART: _____ QTY: _____
PROJECT: _____
CONTACT: _____
DATE: _____
NOTES: _____
APPROVAL: _____

In keeping with our policy of continuing product improvement, Elkay reserves the right to change product specifications without notice. Please visit [elkay.com](#) for the most current version of Elkay product specification sheets. This specification describes an Elkay product with design, quality, and functional benefits to the user. When making a comparison of other producers' offerings, be certain these features are not overlooked.



KENNETH LYNCH & SONS
 114 WILLENBROCK ROAD OXFORD CT 06478
 203-264-2831 FAX 203-264-2833

6737 WORLDS FAIR BENCH		
Scale FAX	Date 7/22/96	Drawn S.L.A.
6' LONG BENCH		Rev. 4/19/01
MAT: SEE NOTES		#6737-6FX

MATERIALS:

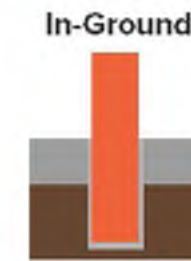
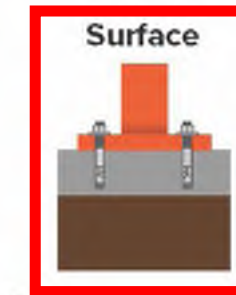
X-BRACING: 3/16" X 1 1/4" HOT ROLLED STEEL
 BENCH LEGS: CAST DUCTILE IRON
 WOOD SLATS: IPE (BETHABARA)/TABEUIA
 SMALL FASTENERS (CARRIAGE BOLTS, NUTS AND WASHERS) STAINLESS STEEL
 TIE ROD: 5/8" DIA HOT ROLLED STEEL WITH 5/8 - 11 CUT THREADS & STEEL HEX NUTS



Hoop Rack

The Hoop Rack is a proven design that provides high security and easy bike parking. The Hoop Rack uses thick pipe construction and the full radius of the bend makes the Hoop an attractive and functional bike rack. This bike rack can also be put on rails for mobility and is popular in bike corrals.

MOUNT OPTIONS



FINISH OPTIONS

Galvanized



Stainless



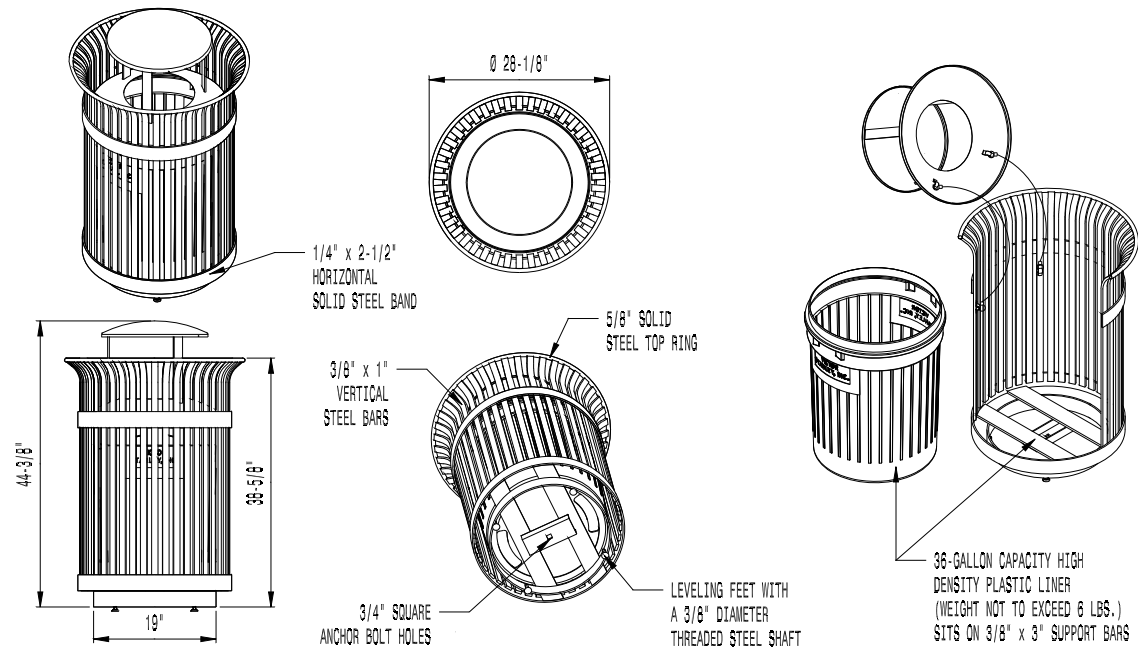
FINISH OPTIONS

Powder Coat



NOTE: PHOTOGRAPH DEPICTS PRODUCT SELECTION ONLY, NOT COLOR.

* ALL DIMENSIONS ARE IN INCHES *



AVAILABLE OPTIONS:

POWDER COATING

10 STANDARD COLORS, 2 OPTIONAL METALLIC COLORS,
CUSTOM COLORS (INCLUDING THE RAL RANGE)

CUSTOM PLAQUES AND DECALS

AVAILABLE WITH STEEL PLAQUES IN VARIOUS SIZES AND PRESSURE SENSITIVE
VINYL OUTDOOR DECALS

LIDS

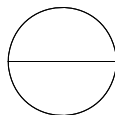
STANDARD TAPERED FORMED LID. AVAILABLE WITH OPTIONAL DOME LID,
DOME LID WITH STAINLESS STEEL ASHTRAY, CONVEX LID, CONVEX LID
WITH SELF CLOSING DOOR, RAIN BONNET LID (AS SHOWN), RAIN BONNET LID WITH
STAINLESS STEEL ASHTRAY, AND RECYCLE LIDS. ASHTRAYS AVAILABLE WITH
OPTIONAL ASHTRAY COVER.

SECURITY

LID IS SECURED WITH VINYL COATED GALVANIZED STEEL AIRCRAFT CABLE.
CABLE IS LOOPED AROUND WELDED IN PLACE ATTACHMENT BRACKETS AND
CRIMPED IN PLACE. AVAILABLE WITH OPTIONAL MOUNT WITH
3 IN-LINE ANCHOR HOLES AND OPTIONAL BOTTOM PLATE COVER.

NOTES:

1. DRAWINGS NOT TO SCALE. DO NOT SCALE DRAWINGS.
2. ALL FABRICATED METAL COMPONENTS ARE STEEL SHOTBLASTED, ETCHED, PHOSPHATIZED, PREHEATED, AND ELECTROSTATICALLY POWDER-COATED WITH T.G.I.C. POLYESTER POWDER COATINGS. PRODUCTS ARE FULLY CLEANED AND PRETREATED, PREHEATED AND COATED WHILE HOT TO FILL CREVICES AND BUILD FILM COATING. COATED PARTS ARE THEN FULLY CURED TO COATING MANUFACTURER'S SPECIFICATIONS. THE THICKNESS OF THE RESULTING FINISH AVERAGES 8-10 MILS (200-250 MICRONS).
3. THIS VICTOR STANLEY, INC. PRODUCT MUST BE PERMANENTLY AFFIXED TO THE GROUND. CONSULT YOUR LOCAL CODES FOR REGULATIONS.
4. VICTOR STANLEY, INC., PLASTIC INNER LINERS ARE MOLDED ON TOOLING DESIGNED FOR AND OWNED BY VICTOR STANLEY, INC. THEY OFFER MAXIMUM CAPACITY AND STRENGTH WITH LIGHTWEIGHT CONSTRUCTION USING CRITICAL MOLDED RIBS, INTEGRAL HANDHOLDS, AND HIGH-STRENGTH MATERIALS. THIS MINIMIZES HANDLING DIFFICULTY AND FACILITATES EASY EMPTYING AND STORAGE WHILE AFFORDING LONG SERVICE LIFE.
5. ANCHOR BOLT(S) NOT PROVIDED BY VICTOR STANLEY, INC.
6. FOR HIGH SALT ABUSIVE CLIMATES, HOT-DIP GALVANIZING BEFORE POWDER COATING IS AVAILABLE. HOT-DIP GALVANIZING IS PERFORMED FOR VICTOR STANLEY, INC. BY AN EXPERIENCED QUALIFIED FIRM TO WHICH PRODUCTS ARE SHIPPED FOR GALVANIZING. HOT-DIP GALVANIZING INCLUDES AN AGGRESSIVE PRE-TREATMENT AND IMMERSION IN A TANK OF CHARGED LIQUID ZINC AT OR AROUND 860°F (460°C). THE RESULTING SURFACE IS RESISTANT TO RUST BUT HAS SOME UNEVENNESS RESULTING FROM THE BONDING OF THE ZINC TO THE STEEL SURFACE. AS A RESULT, THE POWDER-COATING SURFACE FINISH OVER THAT GALVANIZED SURFACE MAY EXHIBIT BUMPS, UNEVENNESS, AND MAY NOT BE AS SMOOTH AS THE STANDARD FINISH; THIS UNEVEN AND INCONSISTENT FINISH IS NORMAL FOR GALVANIZING. CONTACT MANUFACTURER FOR DETAILS.
7. ALL SPECIFICATIONS ARE SUBJECT TO CHANGE. CONTACT MANUFACTURER FOR DETAILS.
8. THIS PRODUCT IS SHIPPED FULLY ASSEMBLED.



S-42

IRONSITES® SERIES

36-GALLON LITTER RECEPTACLE
SHOWN: OPTIONAL RAIN BONNET LID

COPYRIGHT 2014 VICTOR STANLEY, INC.® ALL RIGHTS RESERVED
REV. 4/16/14 DRAWN L.D.L. 2014-336



NOTE: PHOTOGRAPH DEPICTS S-42 PRODUCT
& LID SELECTION ONLY, NOT COLOR.



EXAMPLE OF FINAL COLOR
SELECTION & LABEL DECAL.



For sales & support in Canada contact HUBSS.com
HUB East (416) 540-9287
HUB West (604) 309-8212

streetbond[®] ColorCard

Turn the world
into your canvas

Our complete pavement coatings guide

 Preferential Lane Compliant

Epoxy Modified Acrylic Colors



Light Blue



Standard Blue



Dark Blue




Aqua



Bright Green



 Standard Green



Dark Green



Yellow



Light Orange



Standard Orange



Pink



Standard Red 



Dark Red



Purple

