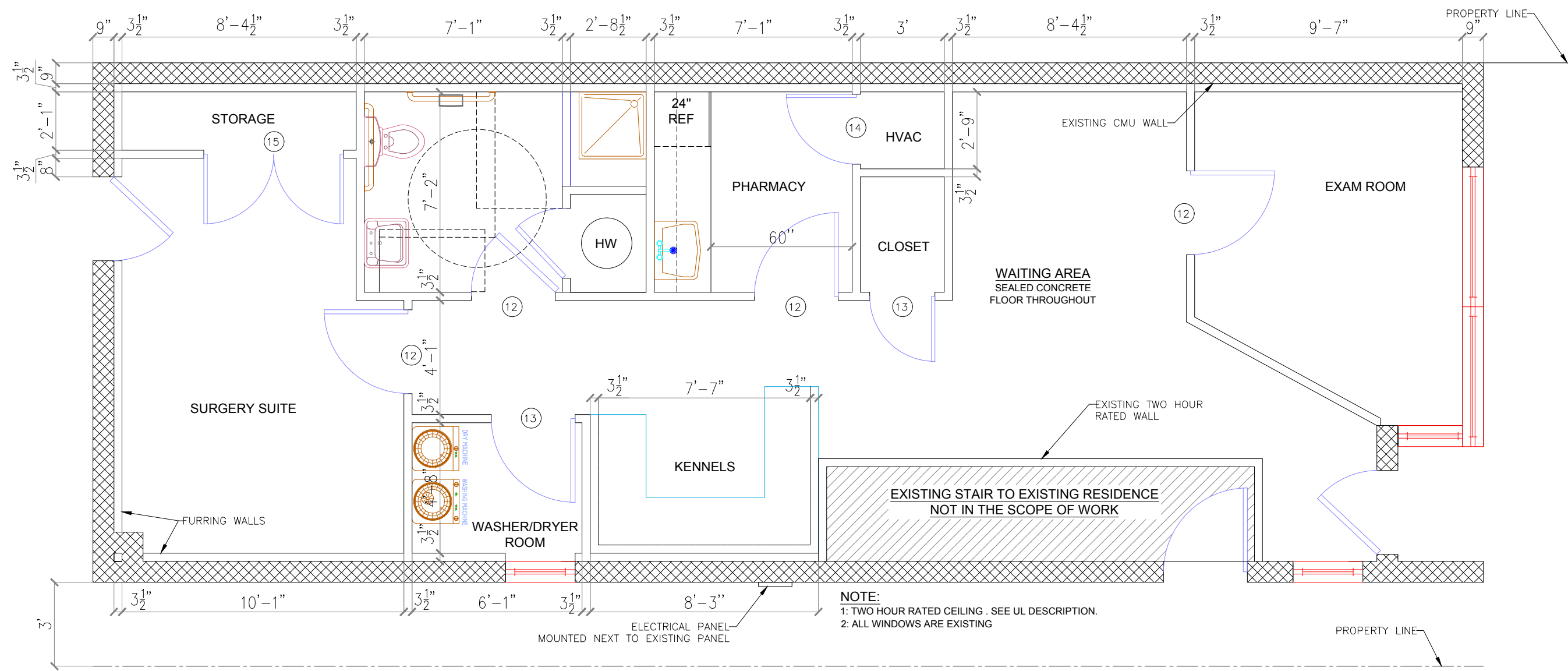


THIS DRAWING IS THE PROPERTY OF ZAKARIA DESIGN CONSULTANT (Pvt) Ltd.(ZDC) CONSULTING ENGINEERS. THIS DRAWING MAY NOT BE USED, REPRODUCED, OR UTILIZED IN ANY WAY OTHER THAN THE PURPOSE FOR WHICH IT IS INTENDED, WITHOUT THE WRITTEN AUTHORIZATION OF ZDC.



NOTES:  
1. ALL DIMENSIONS ARE IN INCHES UNLESS NOTED OTHERWISE.

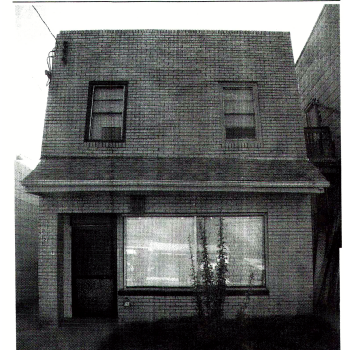


NOTE:  
1: TWO HOUR RATED CEILING . SEE UL DESCRIPTION.  
2: ALL WINDOWS ARE EXISTING

# 1217 W Leigh Street

2  
A.101 SCALE 1/4" = 1'-0"

EXISTING FRONT ELEVATION



OWNER SIGNATURE

REVISION STATUS			
Rev	DATE	DESCRIPTION	DRAWN BY
00	26-05-2019	ISSUED FOR APPROVAL	SHAFEEQUE
01			
02			
03			
04			

CLIENT/CONSULTANT APPROVAL STATUS	
APPROVED	(A)
APPROVED WITH NOTES	(B)
RESUBMIT	(C)
DISAPPROVED	(D)

CONTRACTOR:

ADDRESS:  
313 N. ADAMS STREET RICHMOND, VIRGINIA 23220  
t: 644-4761 / f: 644-4763

DESIGN CONSULTANT:

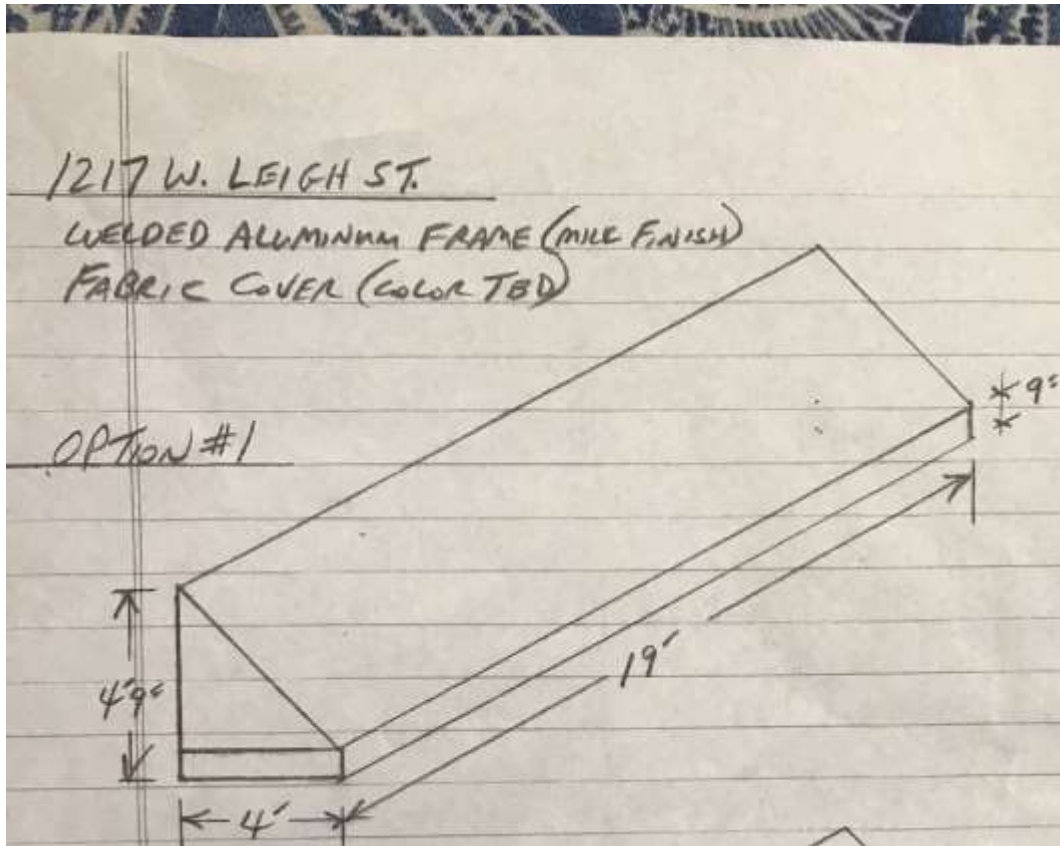
**ZAKARIA Design Consultant**  
ARCHITECTS  
ENGINEERS  
PLANNERS

PH: 0349 - 1594715  
PH: 0333 - 8478997  
E-Mail: zakariadesign786@gmail.com

DRAWING STATUS:		
DESIGN DRAWING		
DISCIPLINE:	ARCHITECTURAL	
PROJECT TITLE:	1217 OFFICE SPACE	
DRAWING TITLE:	GROUND FLOOR PLAN	

DRAWN BY:	CHECKED BY:	DATE:
SHAFEEQUE AHMAD	SHAFEEQUE AHMAD	26 MAY. 2019
JOB NO:	DWG NO:	SCALE:
ZDC-83	2 / A.101	1/4"=1'-0"@A3

Signage on awning



Awning Jones Veterinary Care

Front of building

63" tall

Jones Veterinary Care  
815-801-9883

Monday - 8:00AM - 7:00PM  
Tuesday - 8:00AM - 5:00PM  
Wednesday - 8:00AM - 5:00PM  
Thursday - 8:00AM - 5:00PM  
Friday - 8:00AM - 5:00PM  
Saturday - Closed  
Sunday - Closed

33" wide



59" wide



59" wide