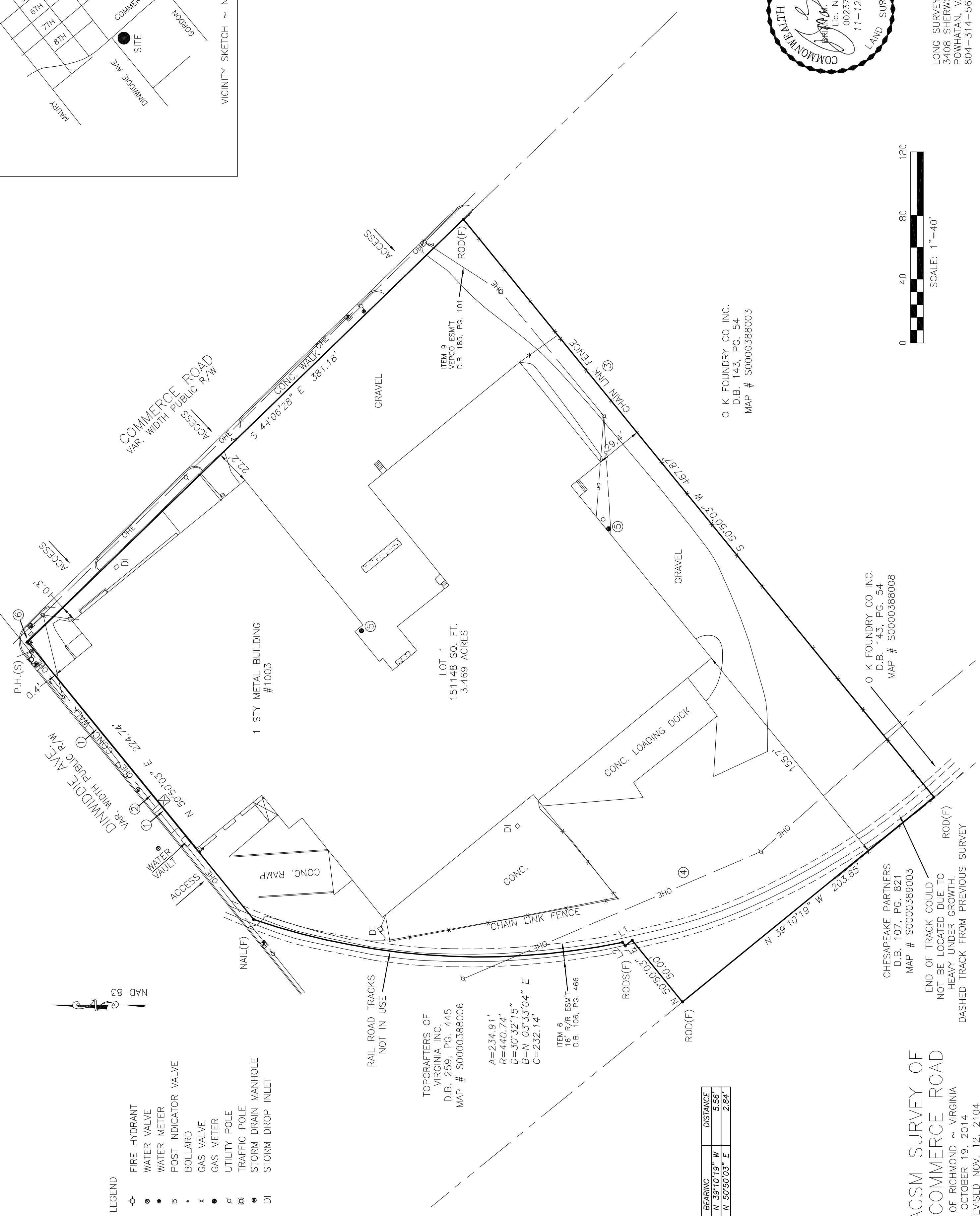


VICINITY SKETCH ~ NTS



LONG SURVEYING, LLC
3408 SHERWOOD BLUFF WAY
POWHATAN, VA 23139
804-314-5620



LEGEND

- ⊕ FIRE HYDRANT
- WATER VALVE
- WATER METER
- ⊗ POST INDICATOR VALVE
- BOLLARD
- ⊕ GAS VALVE
- ⊕ GAS METER
- ⊕ UTILITY POLE
- ⊕ TRAFFIC POLE
- ⊕ STORM DRAIN MANHOLE
- ⊕ STORM DROP INLET
- DI

TOPCRAFTERS OF VIRGINIA INC.
D.B. 259, PG. 445
MAP # S0000388006

A=234.91'
R=440.74'
D=30°32'15"
B=N 03°33'04" E
C=232.14'

ITEM 6
16" R/R ESMT
D.B. 106, PG. 466

ITEM 9
VEPCO ESMT
D.B. 185, PG. 101

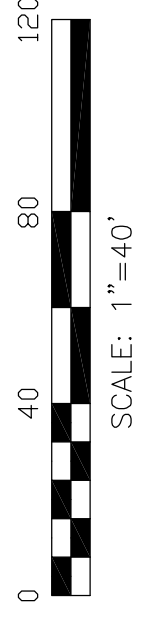
O K FOUNDRY CO INC.
D.B. 143, PG. 54
MAP # S0000388003

O K FOUNDRY CO INC.
D.B. 143, PG. 54
MAP # S0000388008

CHESAPEAKE PARTNERS
D.B. 107, PG. 821
MAP # S0000389003

END OF TRACK COULD NOT BE LOCATED DUE TO HEAVY UNDER GROWTH. DASHED TRACK FROM PREVIOUS SURVEY

LINE	BEARING	DISTANCE
L1	N 39°10'19" W	5.56'
L2	N 50°50'03" E	2.84'



ALTA/ACSM SURVEY OF
1003 COMMERCE ROAD
CITY OF RICHMOND ~ VIRGINIA
OCTOBER 19, 2014
REVISED NOV. 12, 2104