

LOWER LEVEL

1/16" = 1'-0"



MAR 7, 2014



swa Architects-VA, Inc.
1553 E. Main Street
Richmond, Va 23219

© SWA ARCHITECTS-VA, INC. MATERIAL INCLUDED
HEREON IS COVERED BY COPYRIGHT. USE OF
THIS WORK IN WHOLE OR IN PART IS FORBID-
DEN WITHOUT THE EXPRESSED WRITTEN CON-
SENT OF SWA ARCHITECTS.

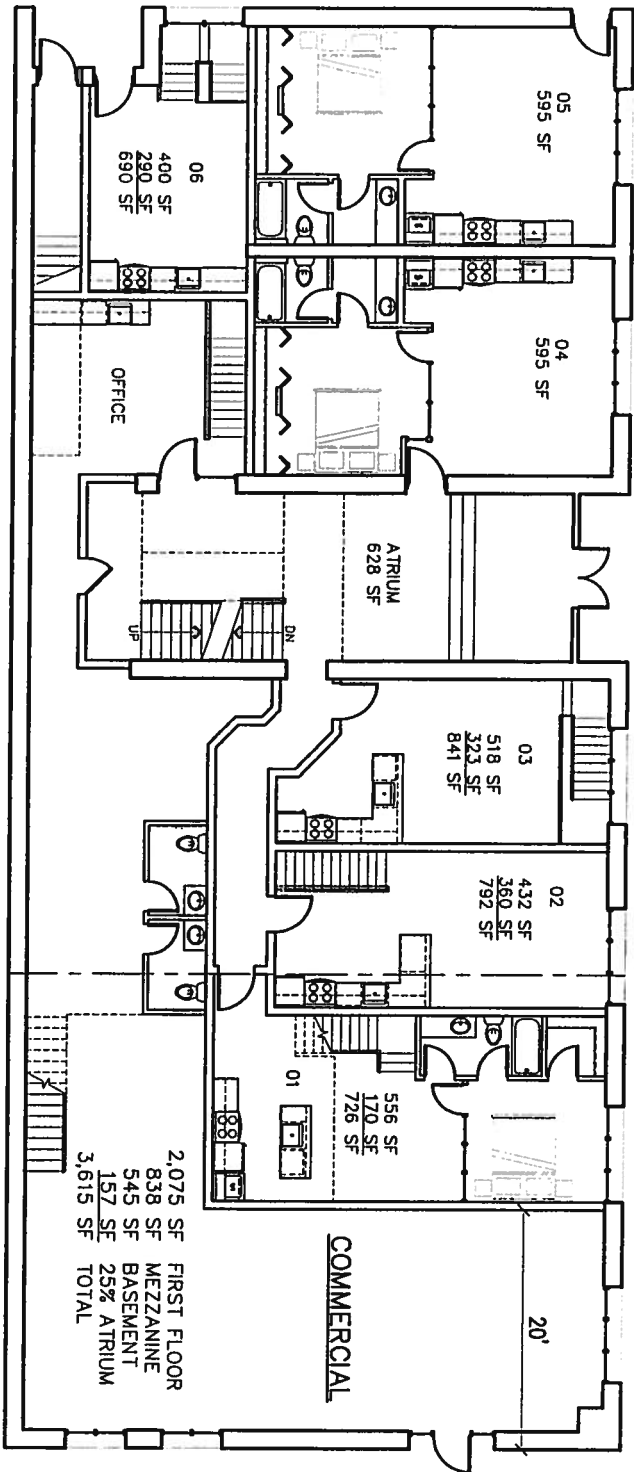
PROJECT NO:

Broad & Lombardy

BROAD & LOMBARDY

613 North Lombardy Street
Richmond, Virginia

North Lombardy St.



West Broad Street

FIRST FLOOR

1/16" = 1'-0"



8,957 RESIDENTIAL SF
 3,615 COMMERCIAL SF
 14,819 GSF
 2,964 SF 20% OF GSF

5,745 SF FIRST FLOOR TOTAL
 $\times \frac{33}{2}$
 1,915 SF REQ'D AREA FOR PERMITTED USES

MAR 7, 2014

2,075 SF FIRST FLOOR
 838 SF MEZZANINE
 545 SF BASEMENT
 157 SF 25% ATRIUM
 3,615 SF TOTAL



swa Architects-VA, Inc.
 1553 E. Main Street
 Richmond, Va 23219

© SWA ARCHITECTS-VA, INC. MATERIAL INCLUDED
 HEREON IS COVERED BY COPYRIGHT. USE OF
 THIS WORK IN WHOLE OR IN PART IS FORBID-
 DEN WITHOUT THE EXPRESSED WRITTEN CON-
 SENT OF SWA ARCHITECTS.

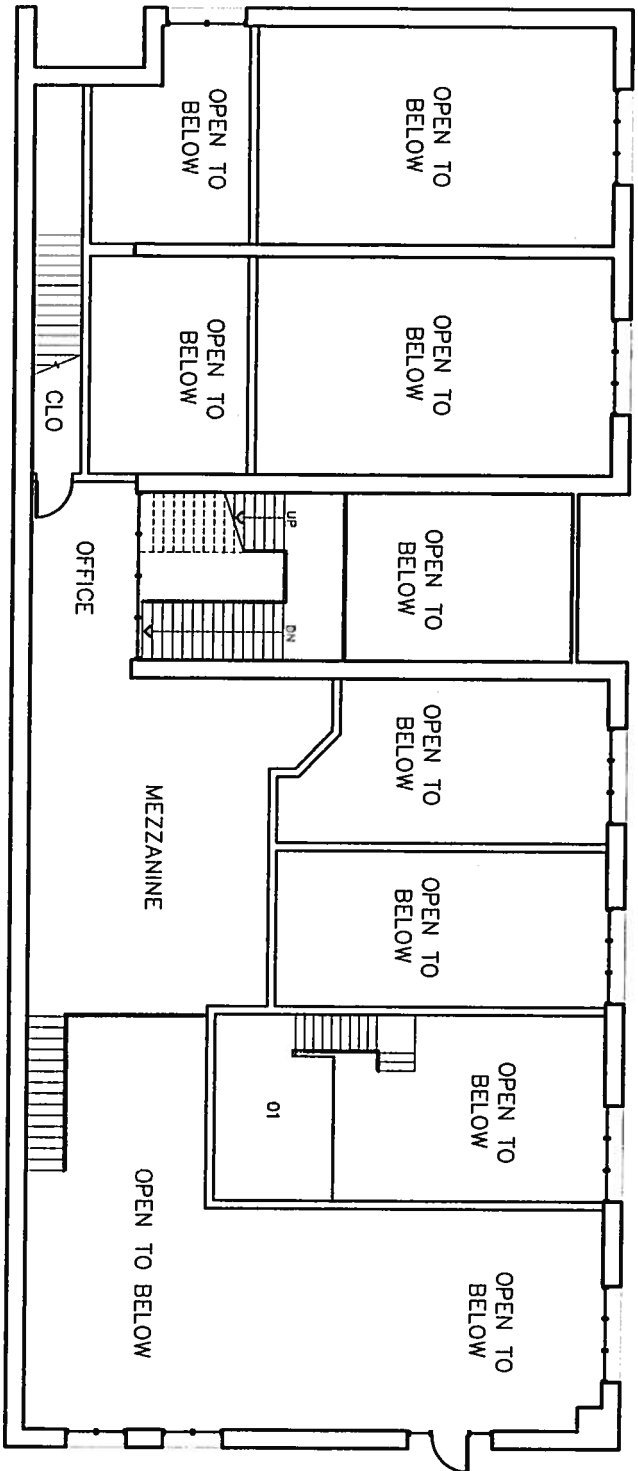
PROJECT NO:

Broad & Lombardy

BROAD & LOMBARDY

613 North Lombardy Street

Richmond, Virginia



MEZZANINE LEVEL

1/16" = 1'-0"



MAR 7, 2014



sma Architects-VA, Inc.
1553 E. Main Street
Richmond, Va 23219

© SMA ARCHITECTS-VA, INC. MATERIAL INCLUDED
HEREON IS COVERED BY COPYRIGHT. USE OF
THIS WORK IN WHOLE OR IN PART IS FORBID-
DEN WITHOUT THE EXPRESSED WRITTEN CON-
SENT OF SMA ARCHITECTS.

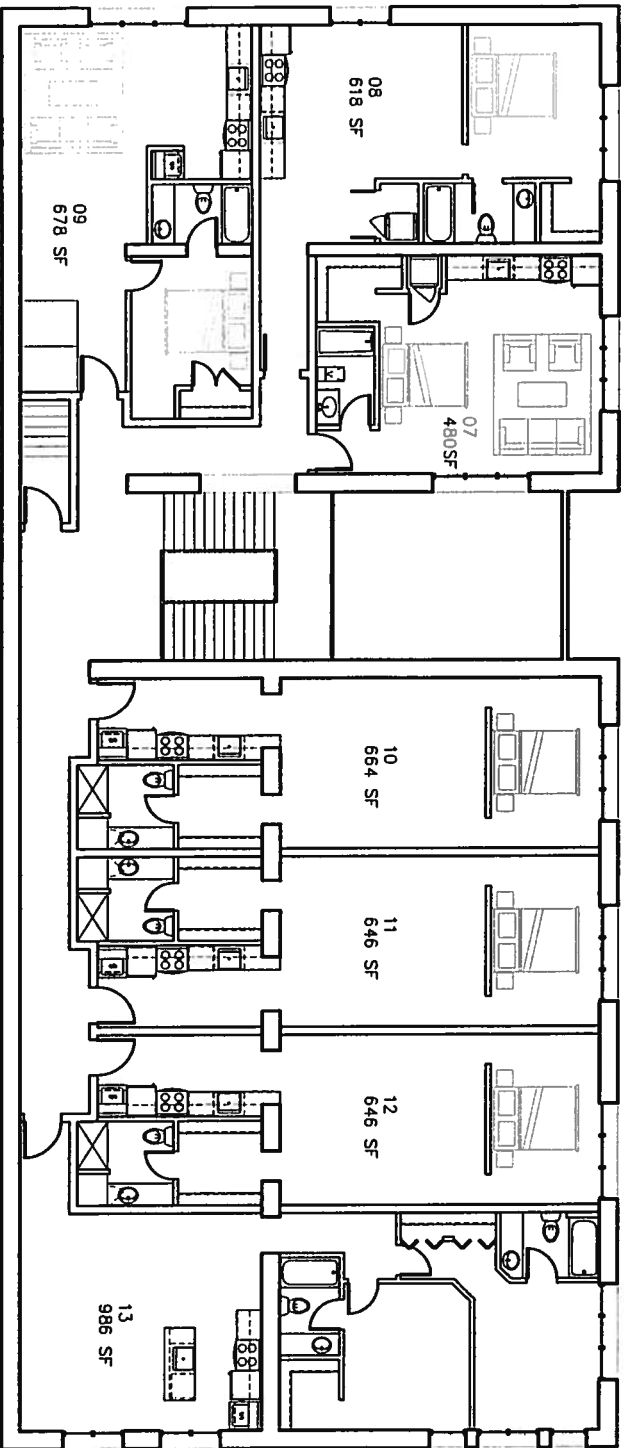
PROJECT NO:

Broad & Lombardy

BROAD & LOMBARDY

613 North Lombardy Street

Richmond, Virginia



SECOND FLOOR 1/16" = 1'-0"



MAR 7, 2014



swa Architects-VA, Inc.
1553 E. Main Street
Richmond, Va 23219

© SWA ARCHITECTS-VA, INC. MATERIAL INCLUDED
HEREON IS COVERED BY COPYRIGHT. USE OF
THIS WORK IN WHOLE OR IN PART IS FORBID-
DEN WITHOUT THE EXPRESSED WRITTEN CON-
SENT OF SWA ARCHITECTS.

PROJECT NO:
Broad & Lombardy

BROAD & LOMBARDY

613 North Lombardy Street
Richmond, Virginia