





# PROJECT SCHEDULE

SIGN TYPE/ DESCRIPTION:	QTY.:	PG.
A. 5" FACE-LIT ILLUM. LOGO TYPE STEM MOUNT ON WIREWAY.	ONE (1)	6
B. 4" DEEP D/S BLADE SIGN w/ PUSH-THRU ILLUM. LOGO TYPE.	ONE (1)	8
C. DIMENSIONAL LOGO TYPE @ TRANSOM.	ONE (1)	10
D. LOGO TYPE DECAL @ WINDOW.	FOUR (4)	12
E. FABRIC AWING w/ VALANCE TYPE.	ONE (1)	14

PROJECT:

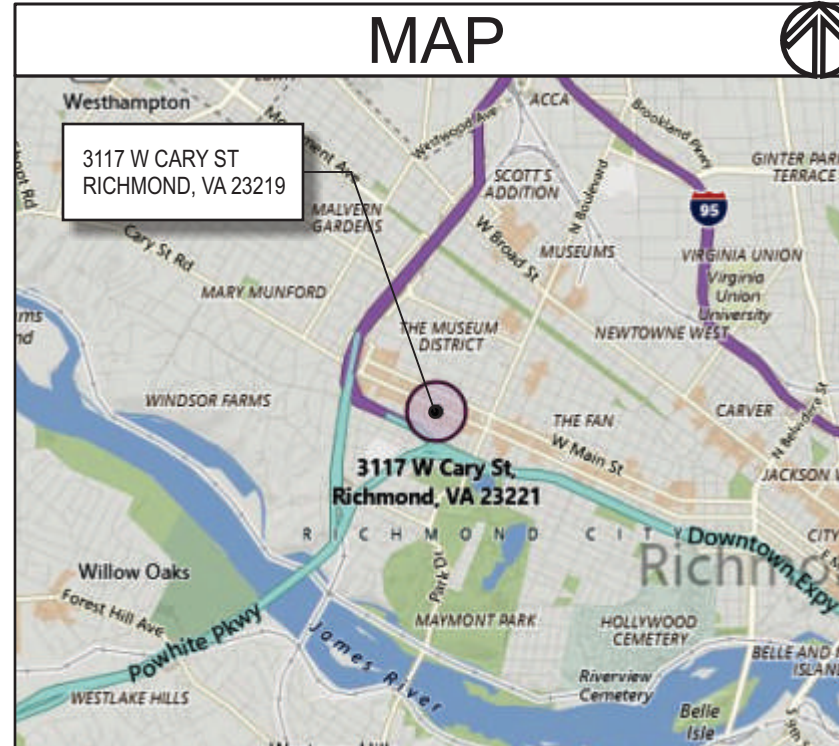
# west elm

3117 W CARY ST  
RICHMOND, VA 23219

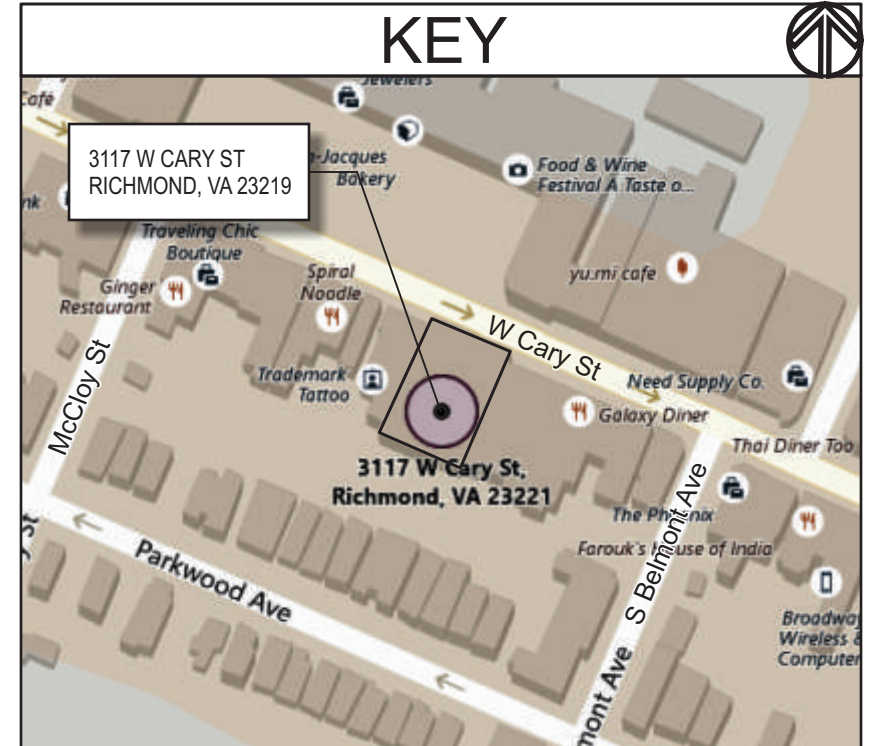
# REVISIONS

#	DATE	DB	NOTES
R1	4-27-2018	LR	UPDATE PER CUSTOMER COMMENTS

## MAP



## KEY



**TRIANGLE**  
SIGN & SERVICE

CLIENT & LOCATION

west elm

3117 W CARY ST  
RICHMOND, VA 23219

LEAD NO.

170817 R1

DATE

3/14/2018

REVIEWED BY

REVISION

SHEET NO.

1 OF 15

SALESMAN

H. SOMMER

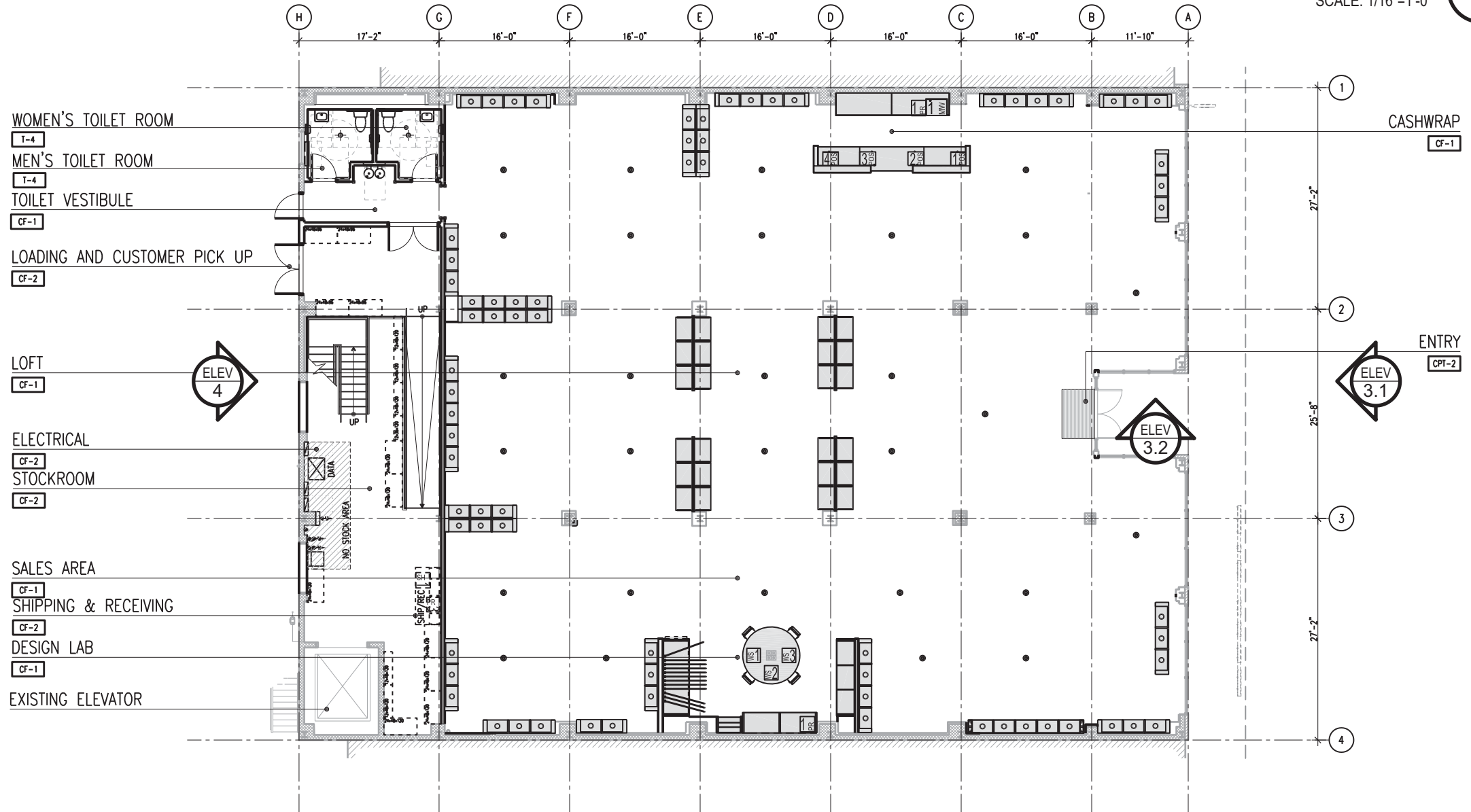
DRAWN BY

JS

SEG. NO.

# 1st FLOOR PLAN

SCALE: 1/16"=1'-0"



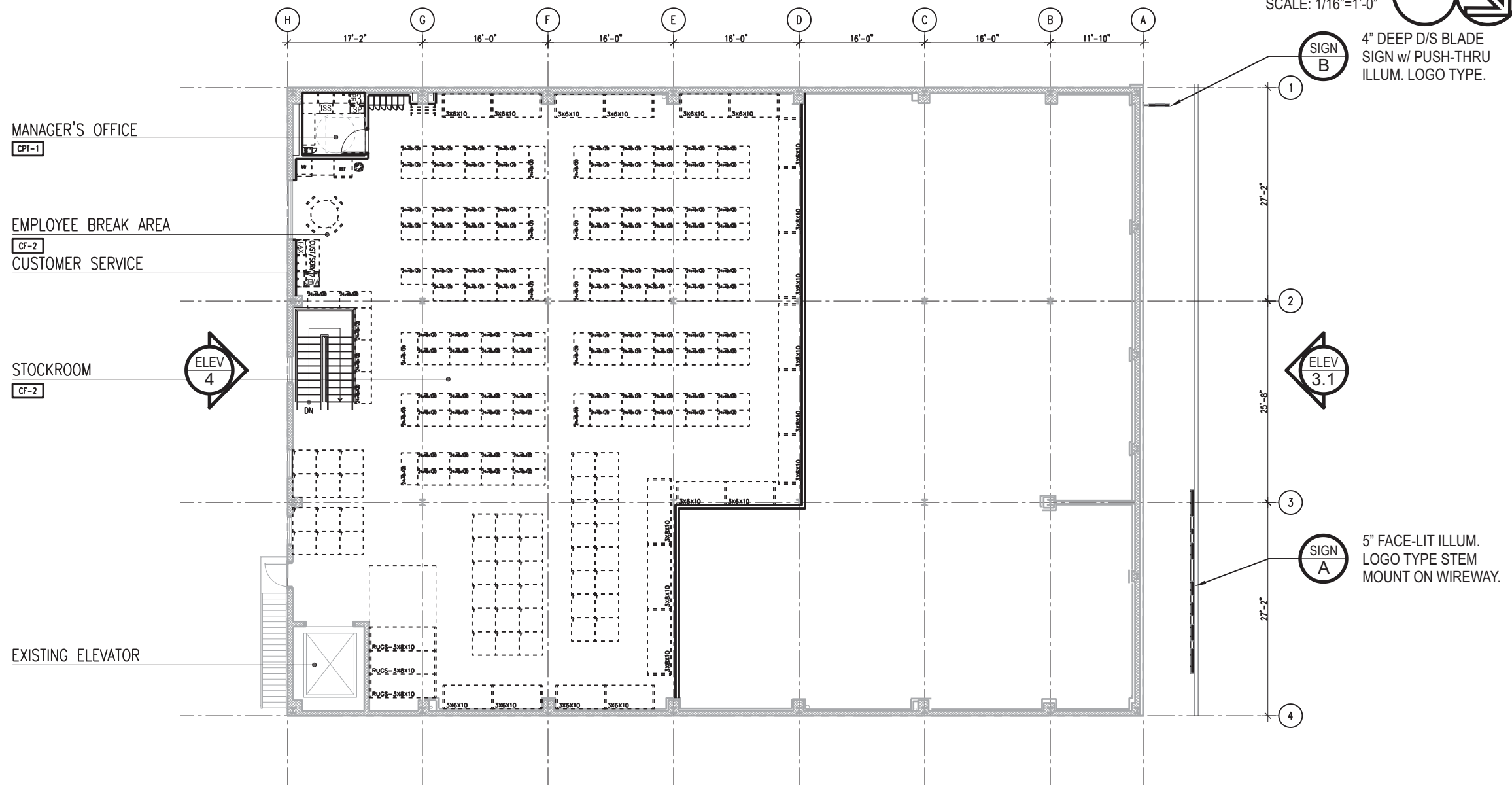
**TRIANGLE**  
SIGN & SERVICE

CLIENT & LOCATION  
**west elm**  
3117 W CARY ST  
RICHMOND, VA 23219

LEAD NO. 170817 R1	DATE 3/14/2018	REVIEWED BY	REVISION
SALESMAN H. SOMMER	DRAWN BY JS	SEG. NO.	

SHEET NO.  
**2 OF 15**

**2nd FLOOR PLAN** 2  
 SCALE: 1/16"=1'-0"



MANAGER'S OFFICE  
CPT-1

EMPLOYEE BREAK AREA  
CF-2  
CUSTOMER SERVICE

STOCKROOM  
CF-2

EXISTING ELEVATOR

**SIGN B**  
4" DEEP D/S BLADE SIGN w/ PUSH-THRU ILLUM. LOGO TYPE.

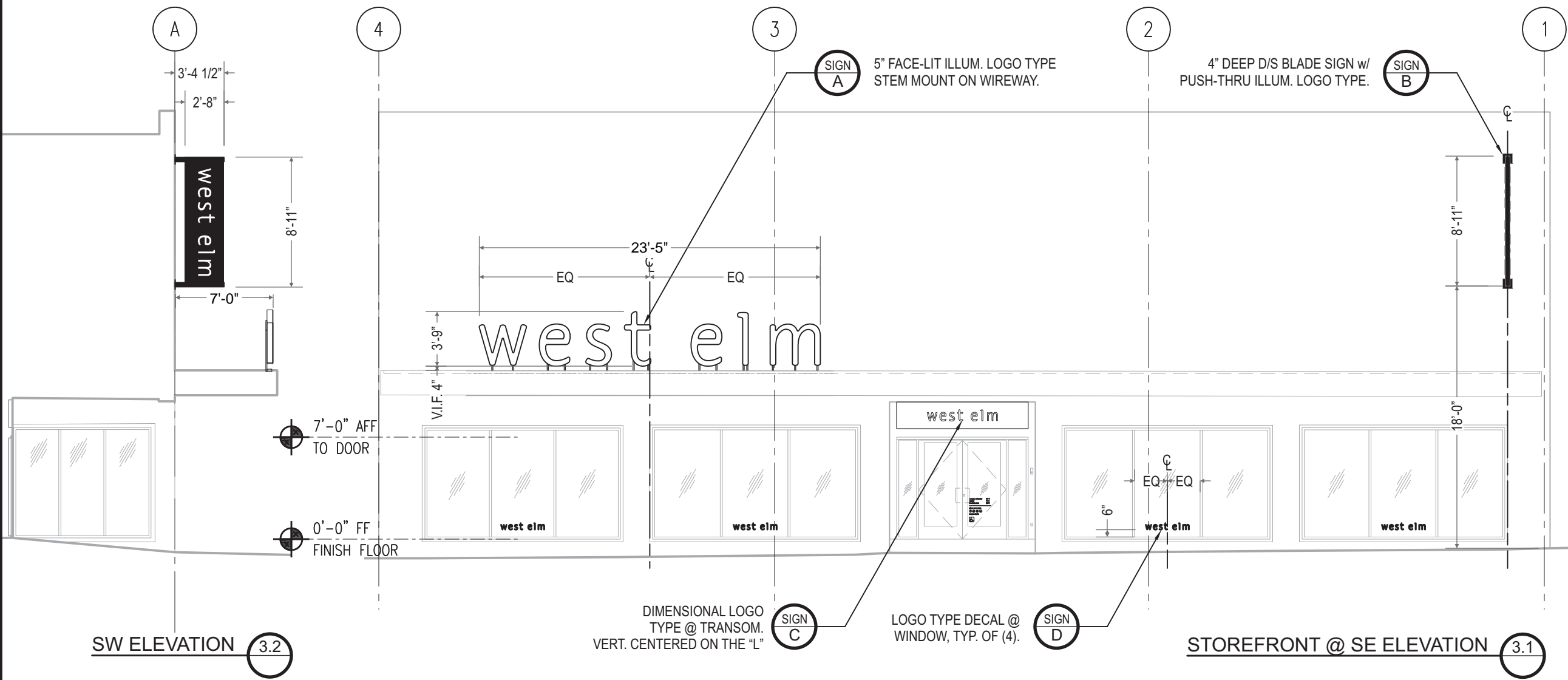
**ELEV 3.1**

**SIGN A**  
5" FACE-LIT ILLUM. LOGO TYPE STEM MOUNT ON WIREWAY.

STOREFRONT ELEVATION

3

SCALE: 1/8"=1'-0"



**TRIANGLE**  
SIGN & SERVICE

CLIENT & LOCATION

west elm

3117 W CARY ST  
RICHMOND, VA 23219

LEAD NO.  
170817 R1

DATE  
3/14/2018

REVIEWED BY

REVISION

SHEET NO.

SALESMAN  
H. SOMMER

DRAWN BY  
JS

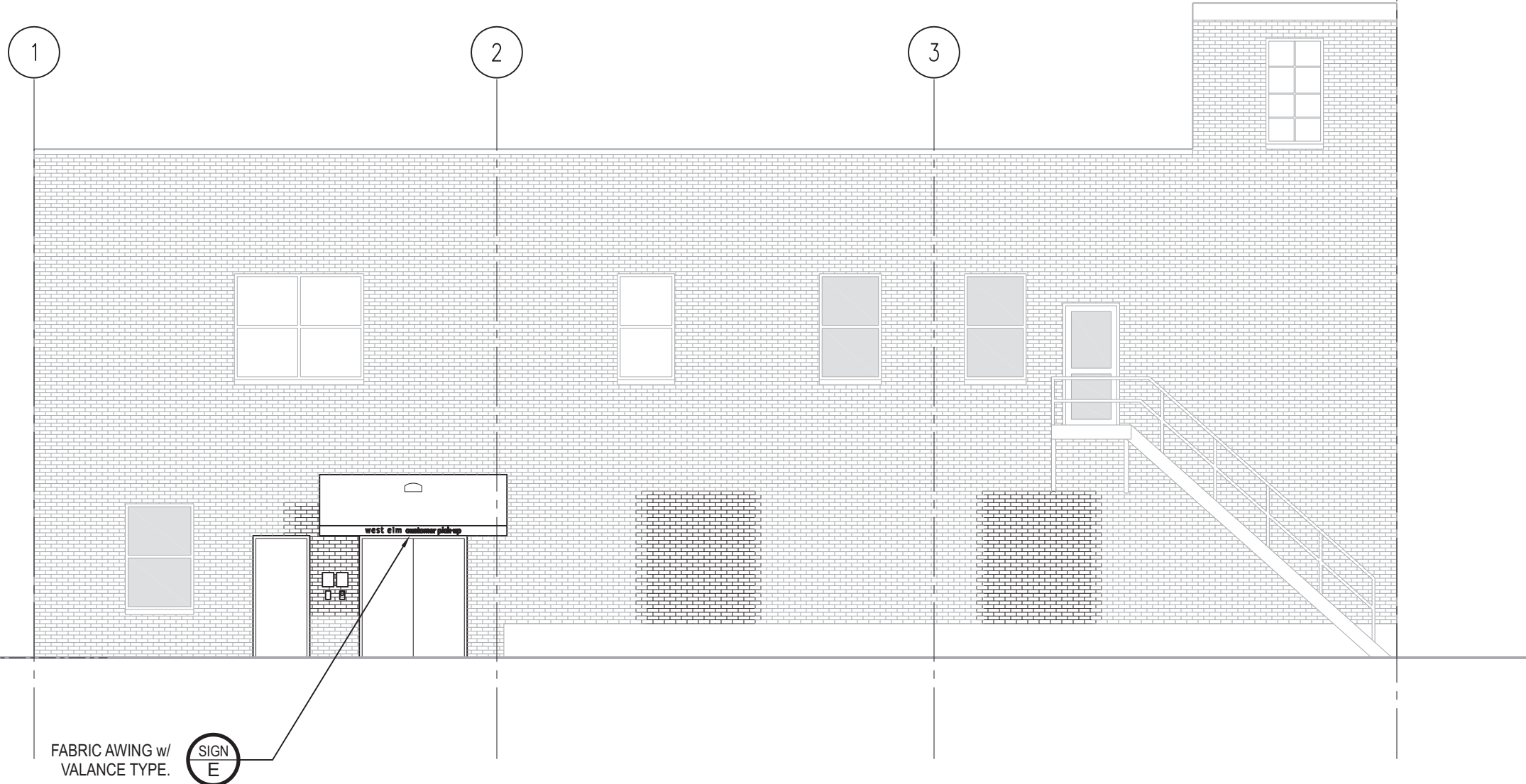
SEG. NO.

4 OF 15

STOREFRONT @ NW ELEVATION

4

SCALE: 1/8"=1'-0"



0'-0" FF  
FINISH FLOOR

FABRIC AWING w/  
VALANCE TYPE.

SIGN  
E

**TRIANGLE**  
SIGN & SERVICE

CLIENT & LOCATION  
**west elm**  
3117 W CARY ST  
RICHMOND, VA 23219

LEAD NO.  
170817 R1  
SALESMAN  
H. SOMMER

DATE  
3/14/2018  
DRAWN BY  
JS

REVIEWED BY  
SEG. NO.

REVISION

SHEET NO.  
**5 OF 15**

FACE-LIT ILLUM. LOGO TYPE STEM-MOUNT ON WIREWAY

A

SCALE: 3/8"=1'-0"

QTY.: ONE (1)

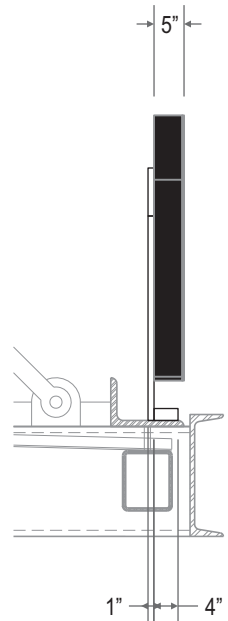
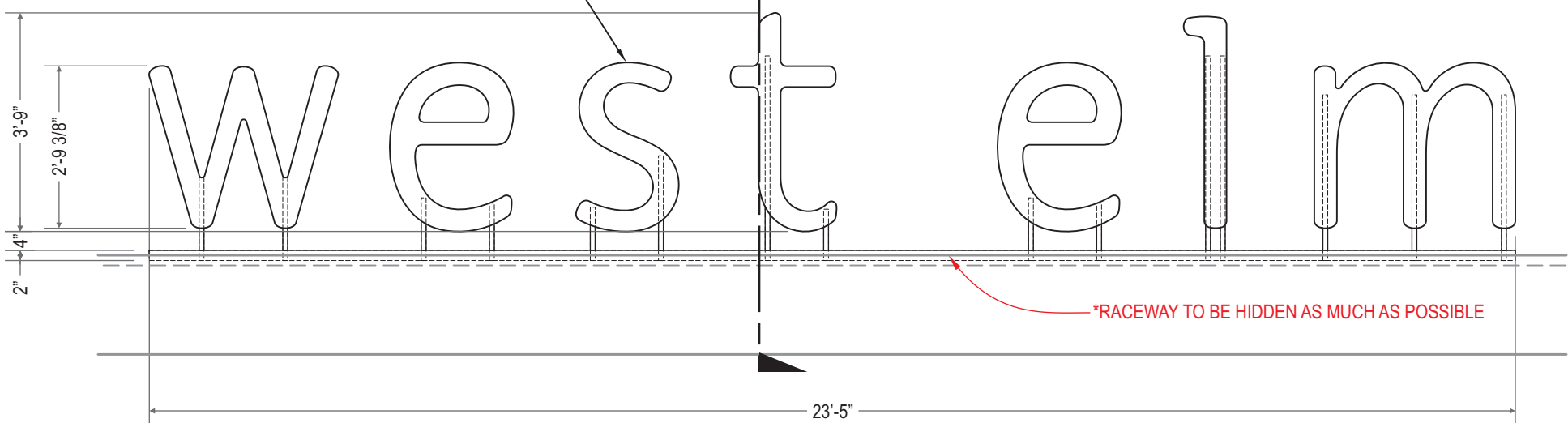
AREA: 45" x 281" = 87.81'  $\sphericalangle$



PLAN A.3

5" DEEP FACE-LIT ILLUM. LOGO  
TYPE STEM MOUNT ON WIREWAY.  
SEE SECTION FOR DETAILS.

SECT  
A-1



END A.2

FRONT A.1

**TRIANGLE**  
SIGN & SERVICE

CLIENT & LOCATION  
**west elm**  
3117 W CARY ST  
RICHMOND, VA 23219

LEAD NO. 170817 R1	DATE 3/14/2018	REVIEWED BY	REVISION	SHEET NO. <b>6 OF 15</b>
SALESMAN H. SOMMER	DRAWN BY JS	SEG. NO.		

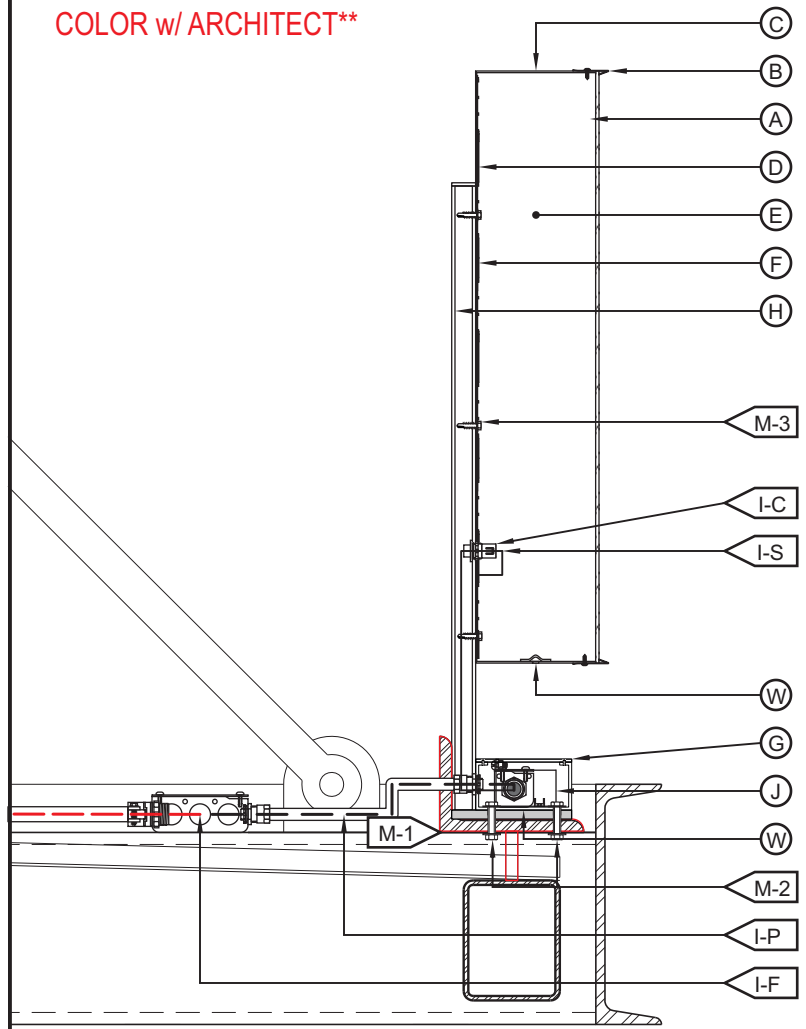


**\*\*VERIFY RACEWAY  
COLOR w/ ARCHITECT\*\***

**TYP. FACE-LIT ILLUM. LOGO TYPE STEM MOUNT ON WIREWAY SECTION DETAIL**

**A-1**

SCALE: N.T.S.



<b>(A) FACE</b>	
MATERIAL:	ACRYLIC 3/16" WHITE #2447.
VINYL:	N/A.
COLOR:	N/A.
<b>(B) TRIMCAP</b>	
SIZE / FINISH:	1" JEWELITE/ TO MATCH RETURN.
<b>(C) RETURN</b>	
DEPTH:	5".
MATERIAL:	0.040" ALUM.
COLOR/ FINISH:	BLACK/ SATIN.
<b>(D) BACK</b>	
MATERIAL:	0.060" ALUM.
COLOR/ FINISH:	BLACK/ SATIN.
<b>(E) INSIDE OF CAN</b>	
COLOR:	WHITE.
<b>(F) ILLUMINATION</b>	
TYPE:	6500°K WHITE LEDS. SEE FABRICATOR NOTE.
<b>(G) WIREWAY</b>	
MATERIAL:	2" x 4" SQ. ALUM. TUBE. WINDOWS CUT @ TOP w/ COVER FOR ACCESS & 1/4" ALUM. FLATBAR SPACERS.
COLOR/ FINISH:	PAINT TO MATCH EXISTING CANOPY FINISH.
GUSSETS:	1/4" ALUM. FLAT BAR RIBBING WELDED TO INTERIOR.
<b>(H) SUPPORT POST</b>	
MATERIAL:	1" x 1" SQ. ALUM. TUBE.
COLOR/ FINISH:	@ LETTER: BLACK/ SATIN. @ BELOW: TO MATCH WIREWAY.

<b>(I) WIRING</b>	
I-F: FEED	SEE ELEC. NOTE. 120V PRIMARY IN J-BOX BY OTHERS.
I-P: PRIMARY	12awg FEED IN Ø1/2" SEAL-TITE w/ 1/2" CONNECTORS.
I-S: SECONDARY	U.L. APPROVED CLASS II LOW VOLTAGE WIRE.
I-C: CONNECTOR	U.L. APPROVED ELEC. PASS-THRU CONNECTOR.
<b>(J) POWER SUPPLY</b>	
TYPE:	REMOTE LED POWER SUPPLY HOUSED IN RACEWAY. TYP. J-BOX TO HOUSE ELEC. CONNECTION TO PRIMARY.
VOLTAGE:	120V.
<b>(M) MOUNTING</b>	
M-1:	SEE INSTALLATION NOTE. SIGN SUPPORT @ CANOPY TO BE SUPPLIED & INSTALLED BY CANOPY CONTRACTOR.
M-2:	±Ø3/8" BOLT, NUT & WASHERS TO BRACKET. VERIFY.
M-3:	MECH. FASTENERS, V.I.F.
<b>(W) WEEP HOLE</b>	
TYPE:	Ø1/4" HOLE w/ LIGHT BLOCKING COVER. MIN. QTY.: TWO (2) PER LETTER. MIN. QTY.: TWO (2) @ 4'-0" O.C. FOR RACEWAY.

**120V**

**INSTALLATION NOTES:**

- CUSTOMER G.C. TO PROVIDE ADEQUATE WOOD OR MTL. BLOCKING IN CORRELATION W/ FACADE FRAMING AS REQUIRED.
- INSTALLER IS TO V.I.F. & PROVIDE THE PROPER NON-CORROSIVE MOUNTING HARDWARE TO ENSURE SAFE INSTALLATION.
- ALL EXTERIOR FACADE PENETRATIONS TO BE WATERTIGHT.
- INSTALLATION TO MEET CURRENT N.E.C., U.L. & LOCAL CODES.

**ELECTRICAL NOTES:**

- ALL ELEC. COMPONENTS TO BE U.L. APPROVED.
- CUSTOMER IS RESPONSIBLE FOR ONE (1) 120v/ 20a DEDICATED CIRCUIT w/ GROUND PER SIGN TO WITHIN 6' OF SIGN.
- LOCKOUT SWITCH INSTALLED @ PANEL BOX FOR ALL ELEC. SIGNS.
- INSTALL IN ACCORDANCE w/ N.E.C. ARTICLE 600 &/ OR LOCAL CODES. THIS INCLUDES PROPER GROUNDING & BONDING OF SIGN.

**FABRICATOR NOTES:**

- PLACEMENT OF LIGHTING ELEMENTS FOR OPTIMUM ILLUMINATION OF SIGN TO BE DETERMINED IN PRODUCTION.
- MANUFACTURER & U.L. LABELS TO BE APPLIED & NOT VISIBLE FROM THE GROUND/ SIDEWALK. ON THE LAST CHANNEL LETTER OR END OF THE SIGN BOX.



<b>TRIANGLE SIGN &amp; SERVICE</b>	CLIENT & LOCATION		LEAD NO.	DATE	REVIEWED BY	REVISION	SHEET NO.
	<b>west elm</b>		170817 R1	3/14/2018			
	3117 W CARY ST RICHMOND, VA 23219		SALESMAN H. SOMMER	DRAWN BY JS	SEG. NO.		<b>7 OF 15</b>



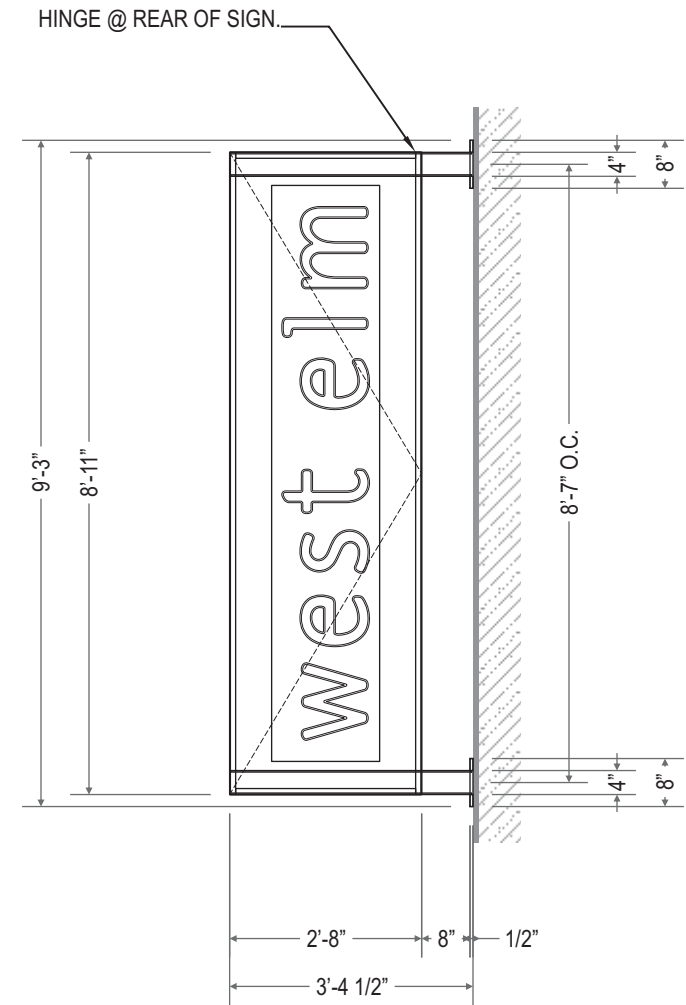
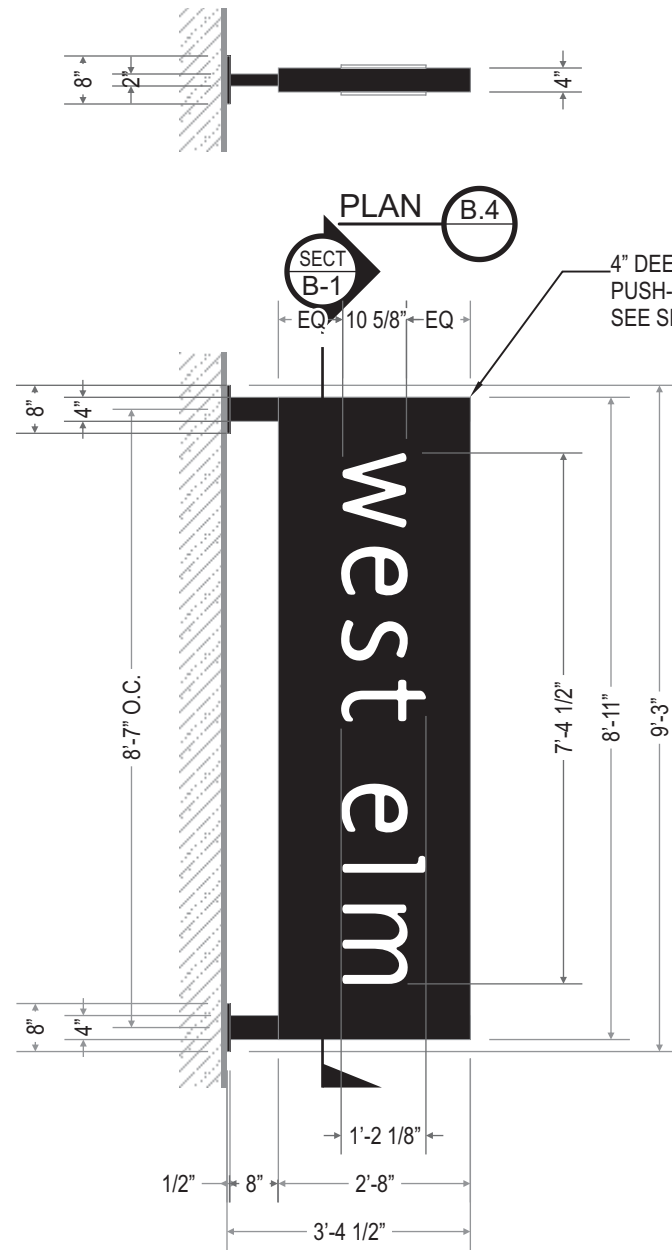
D/S BLADE SIGN w/ PUSH-THRU ILLUM. LOGO

B

SCALE: 3/8" = 1'-0".

QTY.: ONE (1)

AREA: 107" x 32" = 23.78'  $\square$



RIGHT SIDE B.3

END B.2

FRAMING DETAIL @ LEFT B.1

**TRIANGLE**  
SIGN & SERVICE

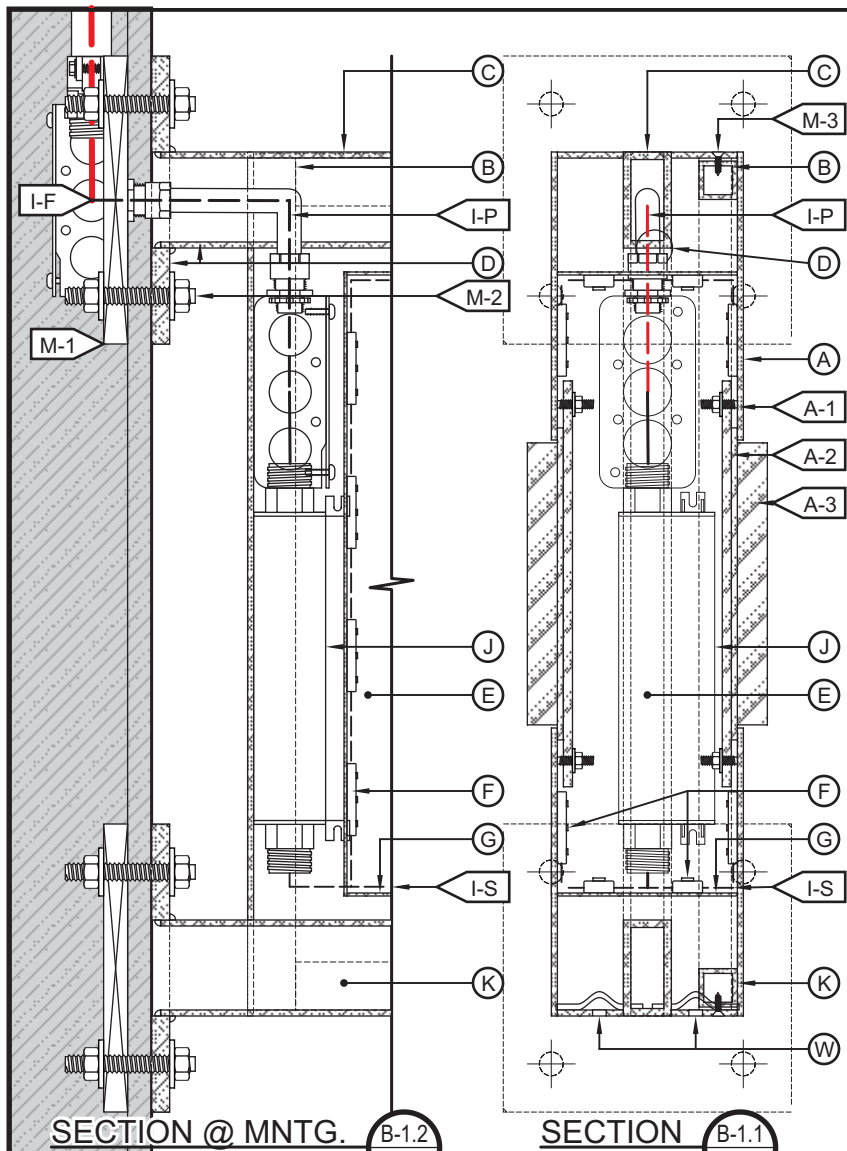
CLIENT & LOCATION  
**west elm**

3117 W CARY ST  
RICHMOND, VA 23219

LEAD NO. 170817 R1	DATE 3/14/2018	REVIEWED BY	REVISION	SHEET NO. <b>8 OF 15</b>
SALESMAN H. SOMMER	DRAWN BY JS	SEG. NO.		

# D/S BLADE SIGN w/ PUSH-THRU ILLUM. LOGO TYPE SECTION DETAIL B-1

SCALE: N.T.S.



<b>(A) FACE</b>	
MATERIAL:	1/8" ALUM., LOGO TYPE ROUTED OUT.
COLOR/ FINISH:	BLACK/ SATIN.
A-1: MNTG.	BACK-UP ACRYLIC MOUNTS w/ 10-24 WELDED STUDS & NUTS.
A-2: BACK-UP	3/16" #2447 WHITE ACRYLIC.
A-3: PUSH-THRU	3/4" CLEAR ACRYLIC w/ ROUTED 1/8" RETAINING FLANGE.
<b>(B) HINGE</b>	
MATERIAL:	1" PIANO HINGE & 1" x 1" ALUM. ANGLE @ END SIDE.
<b>(C) RETURN</b>	
DEPTH:	4"
MATERIAL:	1/8" ALUM.
COLOR/ FINISH:	BLACK/ SATIN.
<b>(D) ARM SUPPORT</b>	
MATERIAL:	(2) 4" x 2" ALUM. TUBE w/ (2) 8" x 8" x 1/2" ALUM. PLATE.
COLOR/ FINISH:	BLACK/ SATIN.
<b>(E) INTERIOR FINISH</b>	
COLOR/ FINISH:	WHITE.
<b>(F) ILLUMINATION</b>	
TYPE:	6500°K WHITE LEDS. SEE FABRICATOR NOTE.
<b>(G) BAFFLE</b>	
MATERIAL:	0.040" PRE-COAT WHITE ALUM.

<b>(I) WIRING</b>	
I-F: FEED	SEE ELEC. NOTE. 120V PRIMARY ELEC. SERVICE BROUGHT TO TYP. J-BOX LOCATED BEHIND SIGN BY OTHERS.
I-P: PRIMARY	12awg FEED IN 1/2"Ø SEAL-TITE & 1/2" CONNECTOR.
I-S: SECONDARY	U.L. APPROVED CLASS II LOW VOLTAGE WIRE.
<b>(J) POWER SUPPLY</b>	
TYPE:	INTERNAL LED POWER SUPPLY & DISCONNECT SWITCH.
	TYP. J-BOX TO HOUSE ELECTRICAL CONNECTIONS.
VOLTAGE:	120V.
<b>(K) HOLD CLOSE</b>	
MATERIAL:	1" x 1" ALUM. ANGLE @ TOP, SIDE & BOTTOM.
<b>(M) MOUNTING</b>	
M-1:	SEE INSTALLATION NOTE. PRE-DRILLED HOLES MULLION SYSTEM & MTL. BLOCKING BY OTHERS.
M-2:	Ø3/8" ALL-THREAD, NUT & WASHER THRU BLOCKING.
M-3:	FLUSH-FITTING COUNTER-SUNK SCREW.
COLOR/ FINISH:	FINISH HEAD SATIN BLACK TO MATCH.
<b>(W) WEEP HOLE</b>	
TYPE:	Ø1/4" HOLE w/ LIGHT-BLOCKING BAFFLE. MIN. QTY.: TWO (2).

SECTION @ MNTG. B-1.2

SECTION B-1.1

**120V**

**INSTALLATION NOTES:**

- CUSTOMER G.C. TO PROVIDE ADEQUATE WOOD OR MTL. BLOCKING IN CORRELATION W/ FACADE FRAMING AS REQUIRED.
- INSTALLER IS TO V.I.F. & PROVIDE THE PROPER NON-CORROSIVE MOUNTING HARDWARE TO ENSURE SAFE INSTALLATION.
- ALL EXTERIOR FACADE PENETRATIONS TO BE WATERTIGHT.
- INSTALLATION TO MEET CURRENT N.E.C., U.L. & LOCAL CODES.

**ELECTRICAL NOTES:**


- ALL ELEC. COMPONENTS TO BE U.L. APPROVED.
- CUSTOMER IS RESPONSIBLE FOR ONE (1) 120V/ 20a DEDICATED CIRCUIT w/ GROUND PER SIGN TO WITHIN 6' OF SIGN.
- LOCKOUT SWITCH INSTALLED @ PANEL BOX FOR ALL ELEC. SIGNS.
- INSTALL IN ACCORDANCE w/ N.E.C. ARTICLE 600 &/ OR LOCAL CODES. THIS INCLUDES PROPER GROUNDING & BONDING OF SIGN.

**FABRICATOR NOTES:**

- PLACEMENT OF LIGHTING ELEMENTS FOR OPTIMUM ILLUMINATION OF SIGN TO BE DETERMINED IN PRODUCTION.
- MANUFACTURER & U.L. LABELS TO BE APPLIED & VISIBLE FROM THE GROUND. ON THE LAST CHANNEL LETTER OR END OF THE SIGN BOX.



**ALL ELECTRICAL COMPONENTS ARE TO BE UL APPROVED**

	CLIENT & LOCATION		LEAD NO.	DATE	REVIEWED BY	REVISION	SHEET NO.
	<p>west elm</p> <p>3117 W CARY ST RICHMOND, VA 23219</p>		170817 R1	3/14/2018			
			SALESMAN	DRAWN BY	SEG. NO.		
			H. SOMMER	JS			

DIMENSIONAL LOGO TYPE @ TRANSOM WINDOW

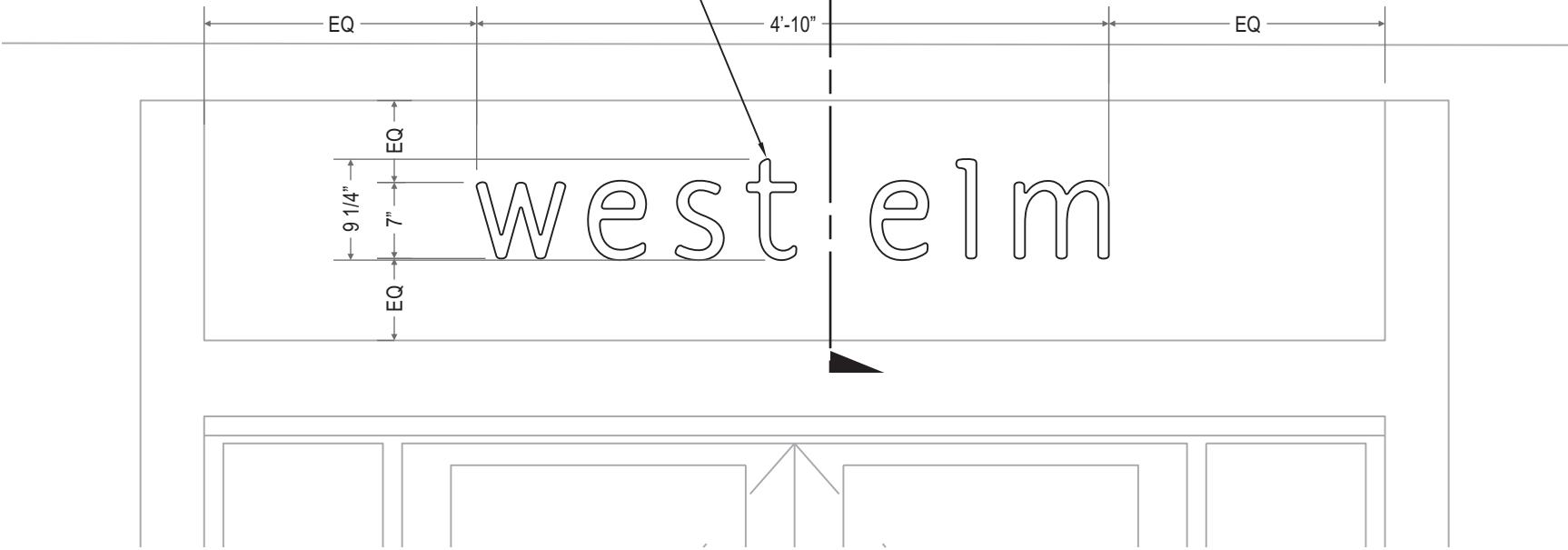


SCALE: 3/4"=1'-0"

QTY.: ONE (1)

AREA: 9.25' x 58" = 3.73'  $\sphericalangle$

3/8" THK. DIMENSIONAL LOGO TYPE ON  
1st SURFACE ADHESIVE OPAQUE WHITE VINYL  
INSET LOGO TYPE ON GLASS EXTERIOR/ FACE.  
SEE SECTION FOR DETAILS.



**TRIANGLE**  
SIGN & SERVICE

CLIENT & LOCATION

west elm

3117 W CARY ST  
RICHMOND, VA 23219

LEAD NO.  
170817 R1

DATE  
3/14/2018

REVIEWED BY

REVISION

SHEET NO.

SALESMAN  
H. SOMMER

DRAWN BY  
JS

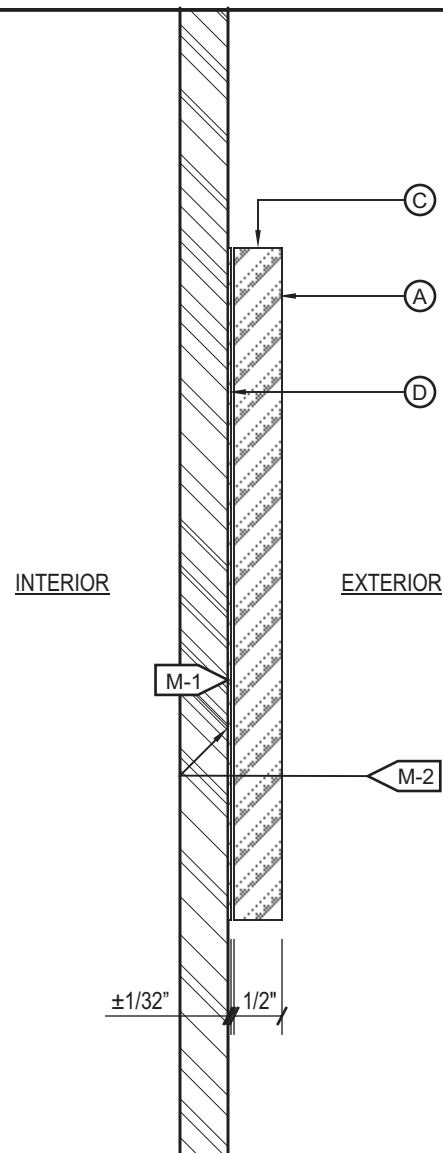
SEG. NO.

10 OF 15

**DIMENSIONAL LOGO TYPE @ GLAZING SECTION DETAIL**

**C-1**

SCALE: N.T.S.



<b>(A) FACE</b>	
MATERIAL:	3/8" OPAQUE WHITE ACRYLIC PLATE.
COLOR/ FINISH:	WHITE/ SATIN.
<b>(C) RETURN</b>	
DEPTH:	3/8" O.A.
MATERIAL:	3/8" OPAQUE WHITE ACRYLIC PLATE.
COLOR/ FINISH:	WHITE/ SATIN.
<b>(D) UNDER-CUT PATTERN</b>	
MATERIAL:	1st SURFACE ADHESIVE VINYL PATTERN. UNDER-CUT (INSET)
	±1/8" FROM EDGE. APPLY TO FACE/ EXTERIOR OF GLASS.
COLOR/ FINISH:	OPAQUE WHITE.
<b>(M) MOUNTING</b>	
M-1:	SEE MOUNTING NOTE.
M-2:	VHB D/F TAPE/ CLEAR SILICONE.

**INSTALLATION NOTES:**

1. CUSTOMER G.C. TO PROVIDE ADEQUATE WOOD OR MTL. BLOCKING IN CORRELATION W/ FACADE FRAMING AS REQUIRED.
2. INSTALLER IS TO V.I.F. & PROVIDE THE PROPER NON-CORROSIVE MOUNTING HARDWARE TO ENSURE SAFE INSTALLATION.
3. ALL EXTERIOR FACADE PENETRATIONS TO BE WATERTIGHT.
4. INSTALLATION TO MEET CURRENT N.E.C., U.L. & LOCAL CODES.

**TRIANGLE SIGN & SERVICE**

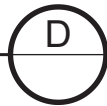
CLIENT & LOCATION  
**west elm**  
 3117 W CARY ST  
 RICHMOND, VA 23219

LEAD NO. 170817 R1	DATE 3/14/2018	REVIEWED BY	REVISION
SALESMAN H. SOMMER	DRAWN BY JS	SEG. NO.	

SHEET NO.  
**11 OF 15**



LOGO TYPE DECAL @ WINDOW, TYP.

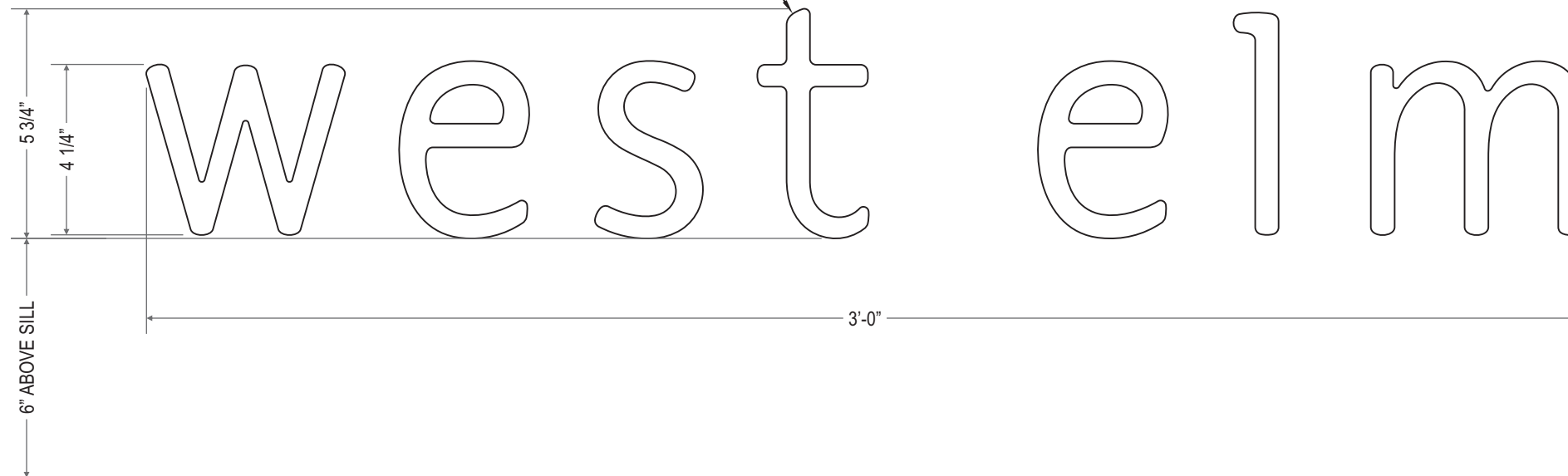


SCALE: 3"=1'-0"

QTY.: FOUR (4)

AREA: 5.75" x 36" = 1.44'  $\square$

2nd SURFACE ADHESIVE OPAQUE MATTE WHITE VINYL  
FILM LOGO TYPE. APPLY @ INTERIOR/ REAR OF GLASS.  
SEE SECTION FOR DETAILS.



**TRIANGLE**  
SIGN & SERVICE

CLIENT & LOCATION

west elm

3117 W CARY ST  
RICHMOND, VA 23219

LEAD NO.  
170817 R1

DATE  
3/14/2018

REVIEWED BY

REVISION

SHEET NO.

SALESMAN  
H. SOMMER

DRAWN BY  
JS

SEG. NO.

12 OF 15

BLACK FABRIC AWNING ON ALUM.  
FRAME w/ WHITE TYPE ON VALANCE.  
SEE SECTION FOR DETAILS.

SECT  
E-1

FABRIC AWNING w/ VALANCE LOGO TYPE

E

SCALE: 3/8"=1'-0"

QTY.: ONE (1)

TYPE AREA: 3.75' x 67" = 1.74' ∅



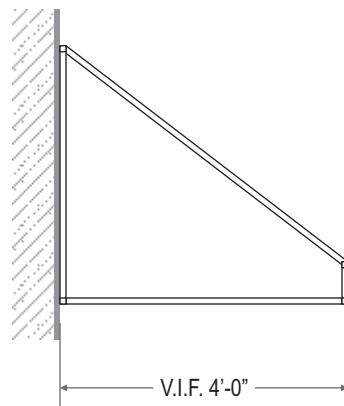
END E.2



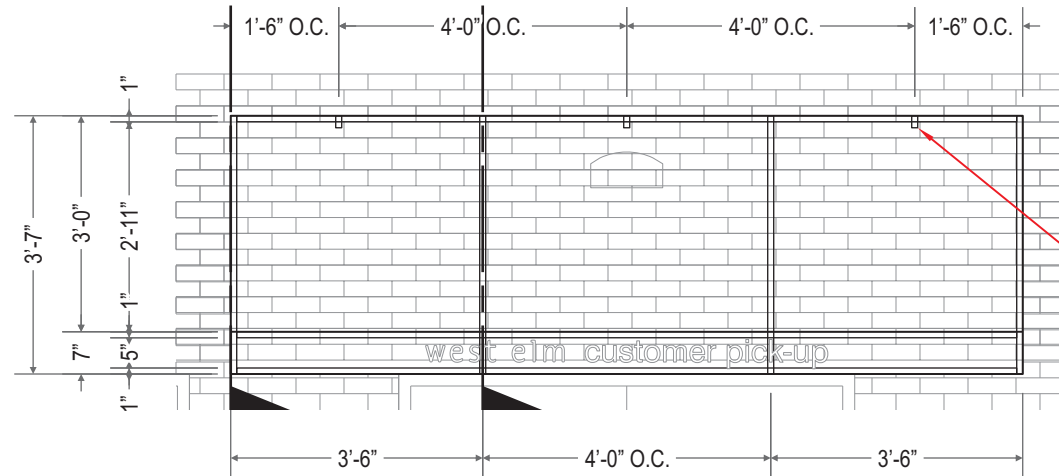
SECT  
E-1.2

SECT  
E-1.1

FRONT E.3



FRAMING @ END E.2



FRAMING @ FRONT E.1

NOTE: TOP CLIP TO BE PLACED 1'-6" IN  
FROM EITHER END OF AWNING & THEN  
CENTERED BETWEEN EACH TRUSS.  
(4'-0" MAX ON CENTER).

**TRIANGLE**  
SIGN & SERVICE

CLIENT & LOCATION

west elm

3117 W CARY ST  
RICHMOND, VA 23219

LEAD NO.

170817 R1

DATE

3/14/2018

REVIEWED BY

REVISION

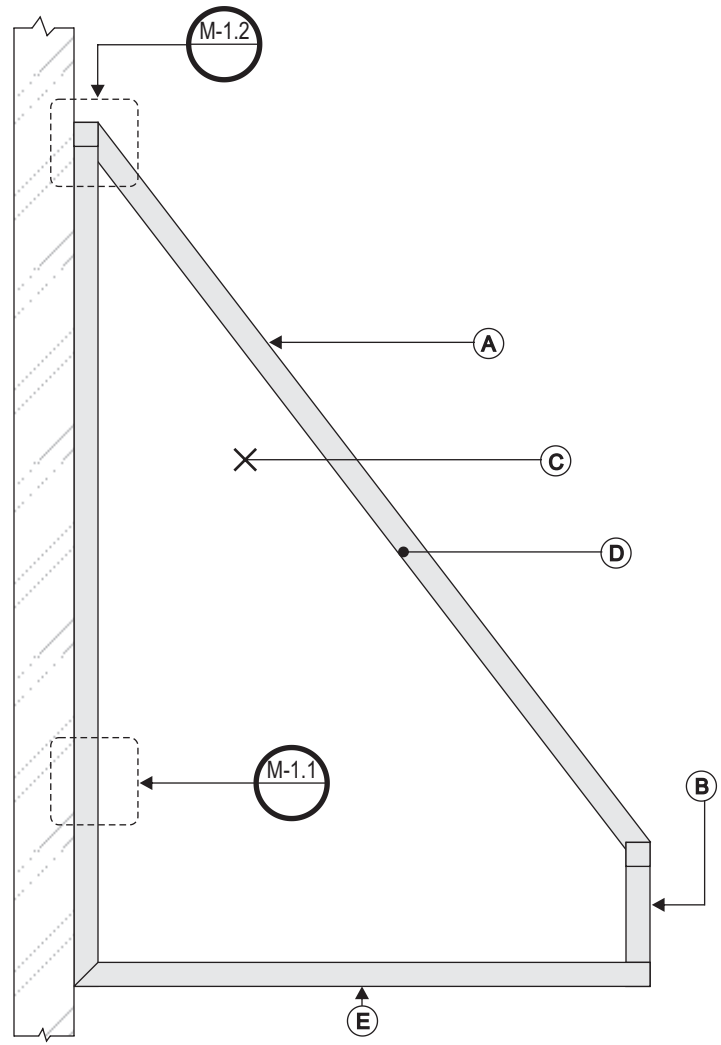
SALESMAN  
H. SOMMER

DRAWN BY  
JS

SEG. NO.

SHEET NO.

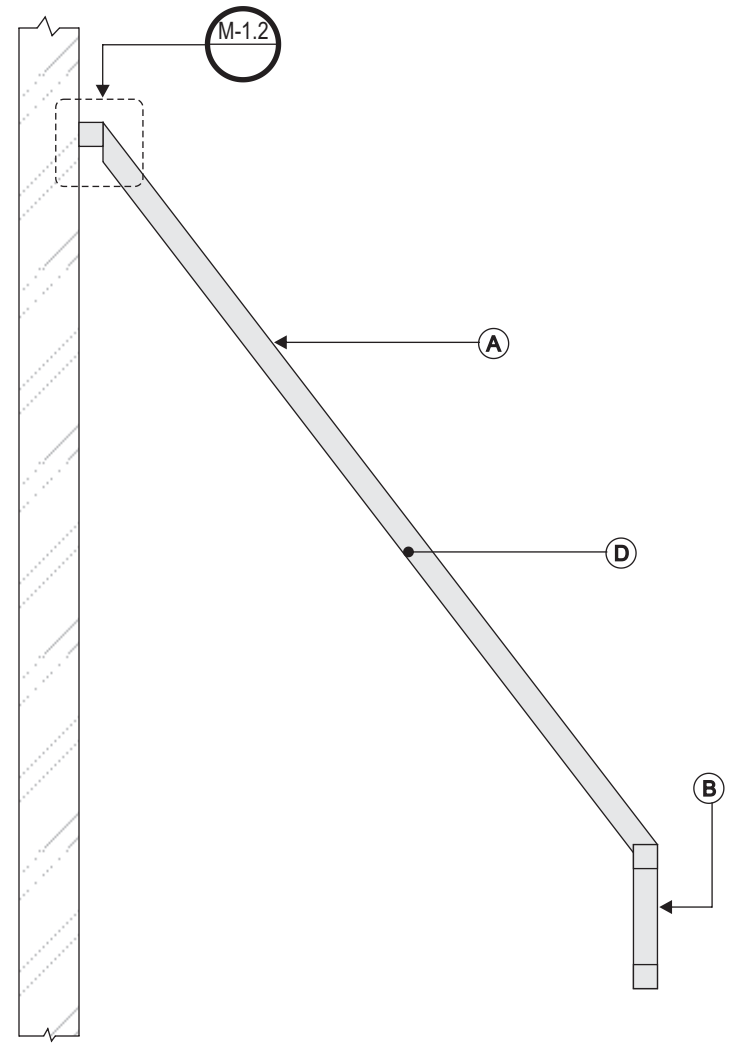
13 OF 15



SECTION @ END E-1.2

<b>(A) COVER</b>	
MATERIAL:	SUNBRELLA FABRIC.
COLOR:	BLACK.
<b>(B) VALANCE</b>	
MATERIAL:	SUNBRELLA FABRIC.
COLOR:	BLACK.
VINYL:	HEAT SEALED, CUSTOMERS LOGO TYPE & STRIPE.
COLOR INFO.:	WHITE.
<b>(C) SIDES:</b>	
COVERED	NO.
<b>(D) FRAMING:</b>	
MATERIAL:	1" SQ. TUBE ALUM.
COLOR:	BLACK.
FINISH:	SATIN.
<b>(E) UNDERCANOPY</b>	
COVERED:	NO.
MATERIAL:	N/A.
<b>(M) MOUNTING</b>	
M-1:	SEE TYPICAL MOUNTING PAGE

- INSTALLATION NOTES:**
1. CUSTOMER G.C. TO PROVIDE ADEQUATE WOOD OR MTL. BLOCKING IN CORRELATION W/ FACADE FRAMING AS REQUIRED.
  2. INSTALLER IS TO V.I.F. & PROVIDE THE PROPER NON-CORROSIVE MOUNTING HARDWARE TO ENSURE SAFE INSTALLATION.
  3. ALL EXTERIOR FACADE PENETRATIONS TO BE WATERTIGHT.
  4. INSTALLATION TO MEET CURRENT N.E.C., U.L. & LOCAL CODES.



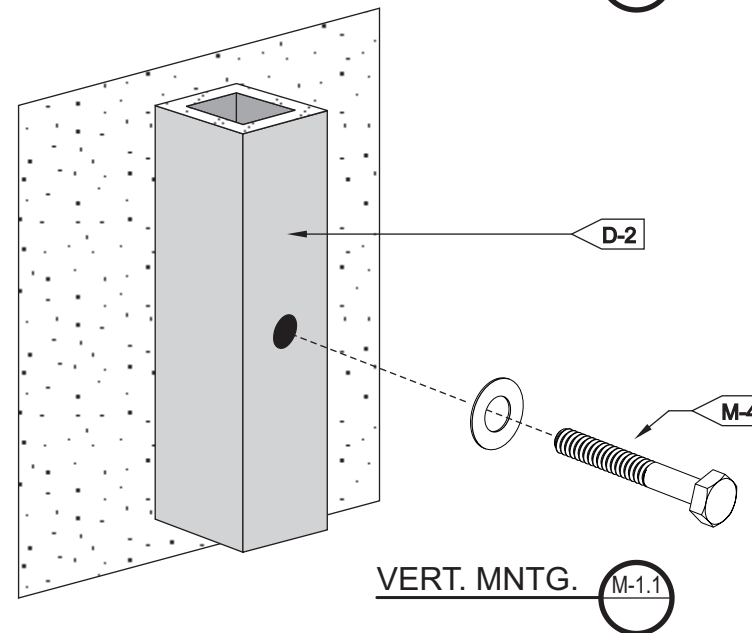
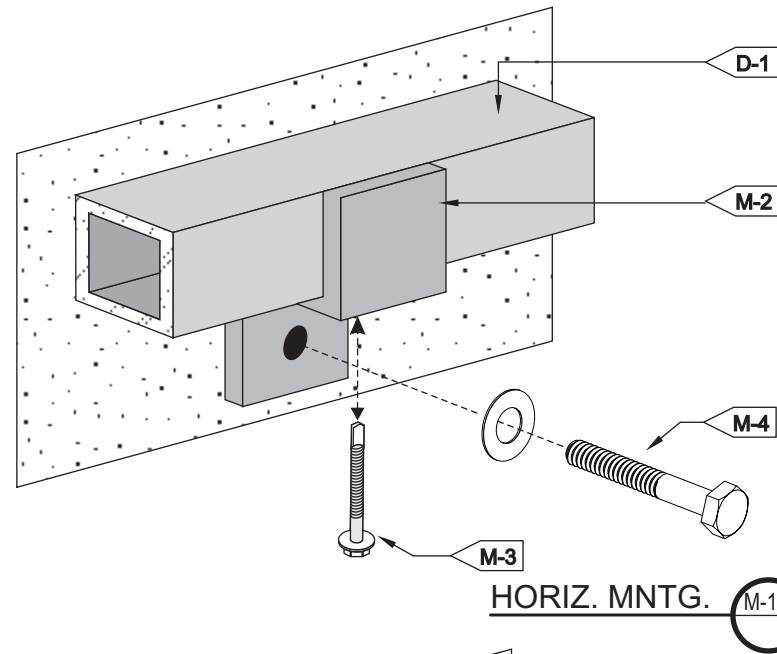
SECTION @ RAFTER E-1.1

**NOTE: TOP CLIP TO BE PLACED 1'-6" IN FROM EITHER END OF AWNING & THEN CENTERED BETWEEN EACH TRUSS. 4'-0" MAX ON CENTER.**

**TYP. AWNING MOUNTING DETAIL**

SCALE: N.T.S.

**M-1**



D FRAMING:	
D-1	HORIZONTAL RAIL
MATERIAL:	1" SQ. ALUM. TUBE
D-2	VERTICAL RAIL
MATERIAL:	1" SQ. ALUM. TUBE
M MOUNTING	
M-1:	SEE MOUNTING NOTE
M-2:	1/8" THK. ALUM Z-CLIP
M-3:	#12 TEK SCREWS
M-4:	3/8" MIN. MASONRY ANCHORS

- INSTALLATION NOTES:**
1. CUSTOMER G.C. TO PROVIDE ADEQUATE WOOD OR MTL. BLOCKING IN CORRELATION W/ FACADE FRAMING AS REQUIRED.
  2. INSTALLER IS TO V.I.F. & PROVIDE THE PROPER NON-CORROSIVE MOUNTING HARDWARE TO ENSURE SAFE INSTALLATION.
  3. ALL EXTERIOR FACADE PENETRATIONS TO BE WATERTIGHT.
  4. INSTALLATION TO MEET CURRENT N.E.C., U.L. & LOCAL CODES.

	CLIENT & LOCATION <b>west elm</b> 3117 W CARY ST RICHMOND, VA 23219	LEAD NO. 170817 R1	DATE 3/14/2018	REVIEWED BY	REVISION	SHEET NO. <b>15 OF 15</b>
		SALESMAN H. SOMMER	DRAWN BY JS	SEG. NO.		