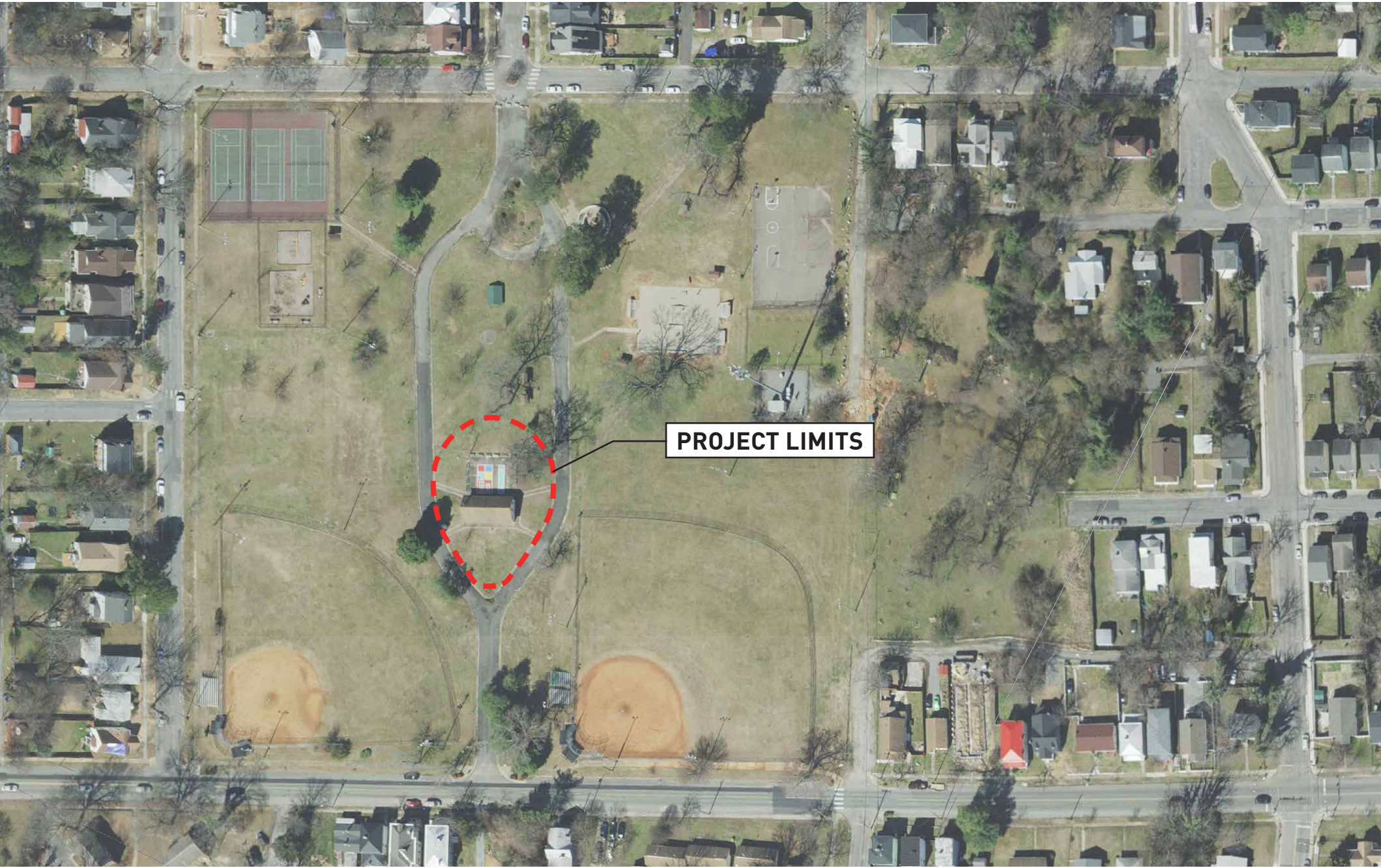


FONTICELLO PARK: PAVILION RENOVATION & NEW SPLASHPAD

2813 Bainbridge Street Richmond, VA 23225



DEPARTMENT OF
**PARKS, RECREATION
AND COMMUNITY
FACILITIES**



ARCHITECTURE
INTERIOR DESIGN

waterstreetstudio
LANDSCAPE ARCHITECTS
CIVIL ENGINEERS

UDC CONCEPTUAL REVIEW
NOVEMBER 09 2023



FINAL CONCEPTUAL
MASTER PLAN

KEY

- 1. REFURBISHED PAVILION
- 2. PLAZA WITH OVERHEAD STRUCTURE
- 3. AMPHITHEATER AND STAGE
- 4. PUBLIC ART AND MEMORIAL SPACE
- 5. MARKIYA DICKSON IMAGINATION ZONE: SPLASH PAD
- 6. MARKIYA DICKSON IMAGINATION ZONE: PLAYGROUND AREA (2-5 YR. & 5-12 YR.)
- 7. RELOCATED BASKETBALL COURTS
- 8. EXISTING BASEBALL FIELDS
- 9. EXISTING SKATE PARK
- 10. EXPANDED SKATE PARK
- 11. FONTICELLO SPRING AND PLAZA
- 12. REFURBISHED PUMP HOUSE
- 13. NATIVE PLANT & POLLINATOR GARDEN
- 14. GARDEN PATH
- 15. SIDEWALK
- 16. MULTIUSE PATHWAY
- 17. LOOP TRAIL
- 18. SKATE SPOT
- 19. RUNNING TRAIL
- 20. OPEN LAWN
- 21. PICNIC SHELTERS
- 22. RAIN GARDEN / BIORETENTION AREA
- 23. PEDESTRIAN BOLLARDS
- 24. VEHICULAR ENTRANCE WITH BOLLARDS
- 25. EXISTING ROAD
- 26. LOOP DRIVE
- 27. UTILITY AREA AND CELL TOWER
- 28. STORAGE AREA FOR LANDSCAPE MATERIALS
- 29. FONTICELLO FOOD FOREST
- 30. FOOD FOREST PATH



FINAL CONCEPTUAL
MASTER PLAN

KEY

- 1. REFURBISHED PAVILION
- 2. PLAZA WITH OVERHEAD STRUCTURE
- 3. AMPHITHEATER AND STAGE
- 4. PUBLIC ART AND MEMORIAL SPACE
- 5. MARKIYA DICKSON IMAGINATION ZONE: SPLASH PAD
- 6. MARKIYA DICKSON IMAGINATION ZONE: PLAYGROUND AREA (2-5 YR. & 5-12 YR.)
- 7. RELOCATED BASKETBALL COURTS
- 8. EXISTING BASEBALL FIELDS
- 9. EXISTING SKATE PARK
- 10. EXPANDED SKATE PARK
- 11. FONTICELLO SPRING AND PLAZA
- 12. REFURBISHED PUMP HOUSE
- 13. NATIVE PLANT & POLLINATOR GARDEN
- 14. GARDEN PATH
- 15. SIDEWALK
- 16. MULTIUSE PATHWAY
- 17. LOOP TRAIL
- 18. SKATE SPOT
- 19. RUNNING TRAIL
- 20. OPEN LAWN
- 21. PICNIC SHELTERS
- 22. RAIN GARDEN / BIORETENTION AREA
- 23. PEDESTRIAN BOLLARDS
- 24. VEHICULAR ENTRANCE WITH BOLLARDS
- 25. EXISTING ROAD
- 26. LOOP DRIVE
- 27. UTILITY AREA AND CELL TOWER
- 28. STORAGE AREA FOR LANDSCAPE MATERIALS
- 29. FONTICELLO FOOD FOREST
- 30. FOOD FOREST PATH





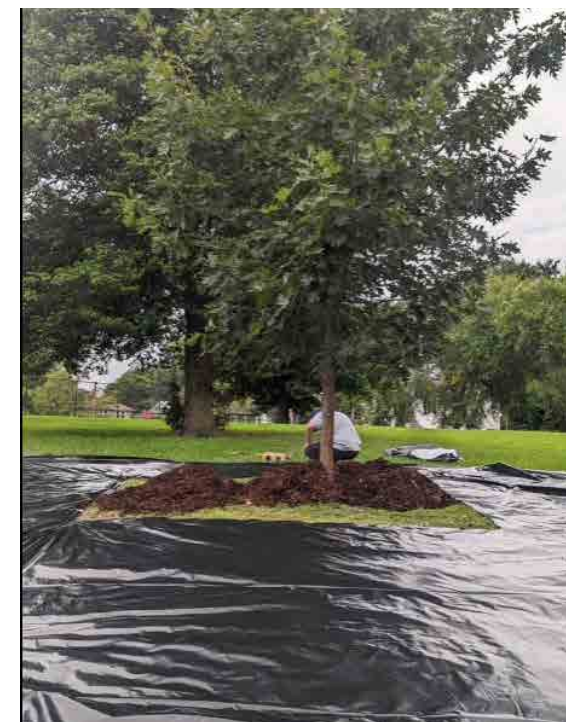




NATIVE MEADOW 1



NATIVE MEADOW 2



POLLINATOR GARDEN

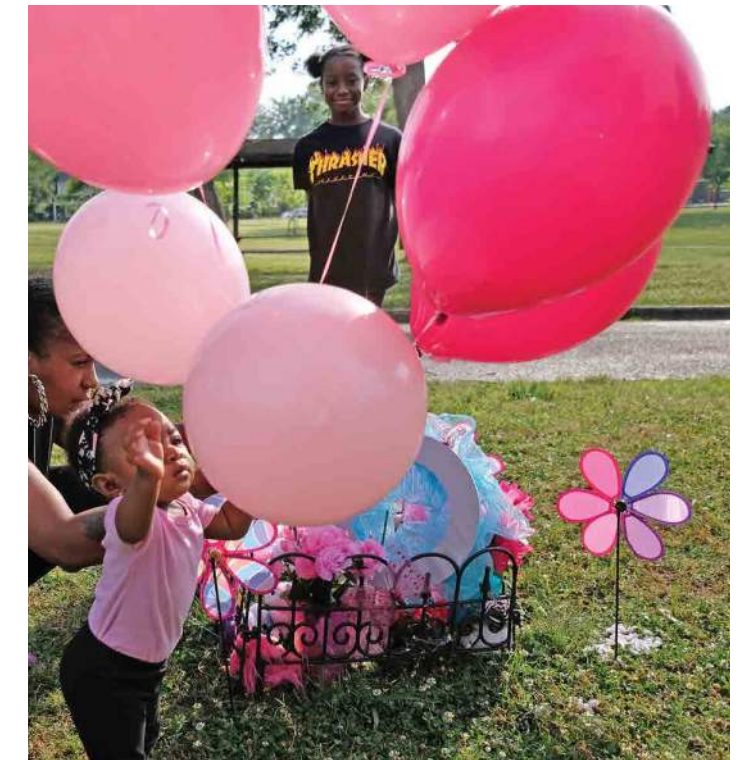


NEW PLAYGROUND



LOCAL ART

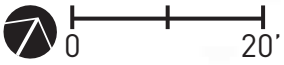
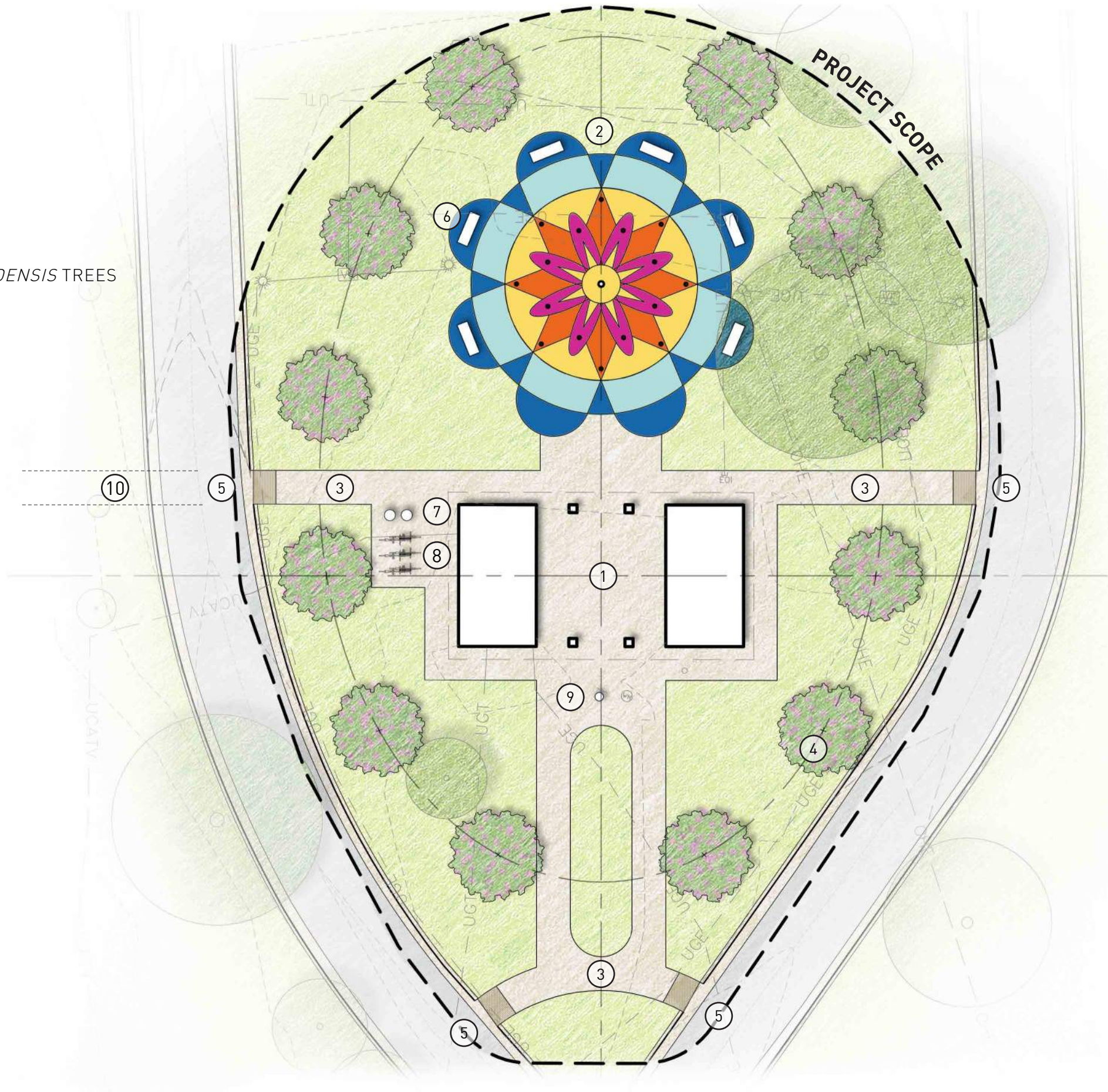
"The current Friends of Fonticello Park was founded on January 28, 2020 after seven neighbors met and decided that a group was needed to advocate for the park after years of deferred maintenance and the death of nine year old Markiya Dickson in May 2019. The Friends group is dedicated to continued improvement and growth in the park. Currently, there are sub committees working to develop a dog park on the eastern baseball field, a native meadow where the old playground used to stand, and a program committee to establish family, friend, and community events in the park."



Markiya Dickson was a fiesty nine-year-old lover of song and dance. She was tragically shot and killed in Fonticello Park in May 2019, an event which has since inspired community groups and initiatives to revitalize and establish safety measures in the park. The symbol of a pink pinwheel can be found around the park as a reminder of her memory.

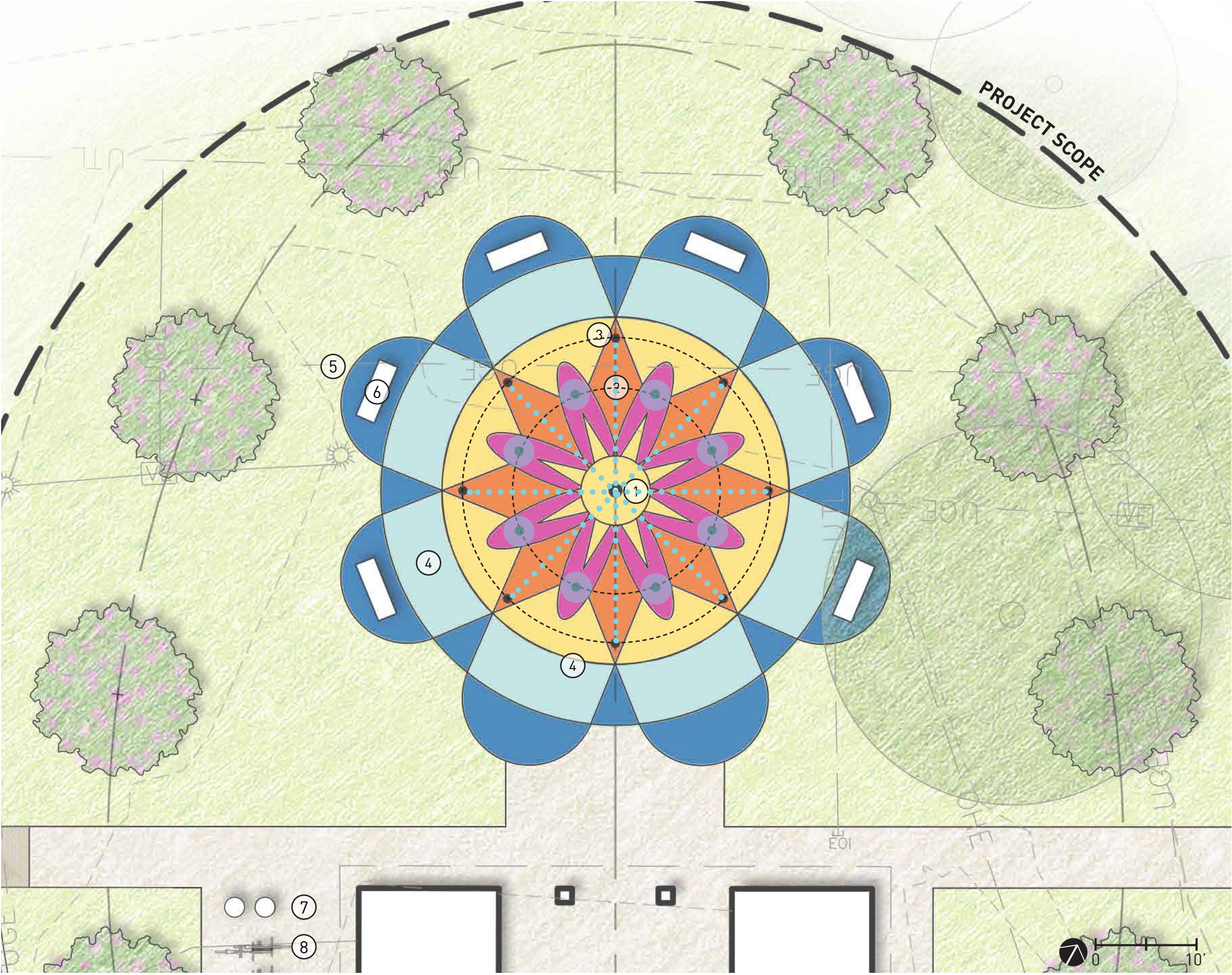
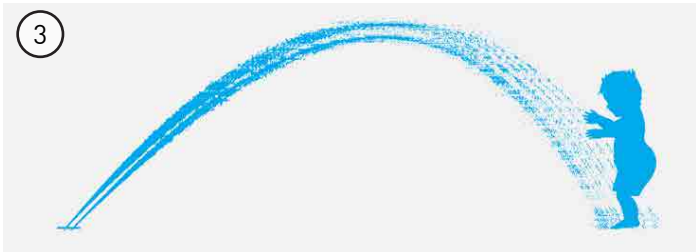
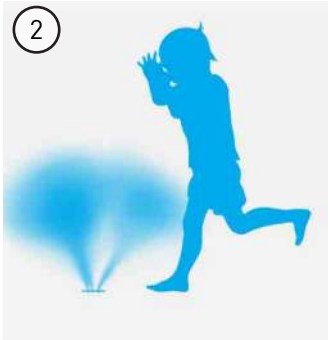
LEGEND

- ① RENOVATED PAVILION
- ② SPLASH PAD
- ③ ADJOINING WALKS
- ④ 2.5" CAL. NATIVE *CERCIS CANADENSIS* TREES
- ⑤ ADA ACCESS
- ⑥ BENCHES (TYP OF 6)
- ⑦ TRASH/RECYCLE BINS
- ⑧ BIKE RACKS
- ⑨ WATER FOUNTAIN
- ⑩ FUTURE PLAYGROUND CONNECTION



LEGEND

- ① CENTER DRAIN
- ② MISTER JETS
- ③ DIRECTIONAL JETS
- ④ 6' DRY ZONE PATHWAY
- ⑤ BENCH NOOK
- ⑥ BENCHES (TYP OF 6)
- ⑦ TRASH/RECYCLE BINS
- ⑧ BIKE RACKS





PLAYGROUND



PAVILION



SPLASHPAD FLOORING



S P E C I F I C A T I O N S

PRODUCT SPECIFICATIONS

Elkay Outdoor ezH2O® Bottle Filling Station Bi-Level, Pedestal with Pet Station Non-Filtered Non-Refrigerated. Features shall include 316 Stainless, Laminar Flow, Heavy Duty Vandal Resistant, Pet Fountain. Furnished with Vandal Resistant bubbler. Mechanical Front Bubbler Button activation. Product shall be Floor Mount/Freestanding, for Outdoor applications, serving 2 station(s). Unit shall be lead-free design which is certified to NSF/ANSI 61 & 372 (lead free) and meets Federal and State low-lead requirements.

Special Features:	316 Stainless, Laminar Flow, Heavy Duty Vandal Resistant, Pet Fountain
Finish:	Beige (BGE), Black (BLK), Blue (BLU), Brown (BRN), Evergreen (EVG), Gray (GRY), Orange (ORN), Purple (PUR), Red (RED), Terracotta (TER), White (WHT), Yellow (YLW)
Power:	No Electrical Required
Bubbler Style:	Vandal Resistant
Activation by:	Mechanical Front Bubbler Button
Mounting Type:	Floor Mount/Freestanding
Chilling Option:	Non-refrigerated
Dimensions (L x W x H):	26" x 31" x 64"
Approx. Shipping Weight:	205 lbs.
Installation Location:	Outdoor
No. of Stations Served:	2

Special Note: Bottle Filler Stations 1 (Upper), Bubbler Stations 1 (Low), Choose from 12 color options

- Mechanically-Activated bubbler continues to supply water in event of service disruptions.
- Laminar flow provides clean fill with minimal splash.
- Base material constructed from marine-grade 316 stainless steel provides the ultimate corrosion protection from even the most corrosive elements.
- Pet Fountain: Features slow drainage for easy drinking.

PART: _____ QTY: _____
PROJECT: _____
CONTACT: _____
DATE: _____
NOTES: _____
APPROVAL: _____



AMERICAN PRIDE. A LIFETIME TRADITION.
Like your family, the Elkay family has values and traditions that endure. For almost a century, Elkay has been a family-owned and operated company, providing thousands of jobs that support our families and communities.



Included with Product: Outdoor Bottle Filler

PRODUCT COMPLIANCE

ADA & ICC A117.1

ASME A112.19.3/CSA B45.4

Buy American Act

GreenSpec®

NSF/ANSI 61 & 372 (lead free)



Complies with ADA & ICC A117.1 accessibility requirements when installed according to the requirements outlined in these standards. Installation may require additional components and/or construction features to be fully compliant. Consult the local Authority Having Jurisdiction if necessary.

[Installation Instructions \(PDF\)](#)

Warranty pertains to drinking water applications only. Non-drinking water applications are not covered under warranty.

[Warranty \(PDF\)](#)

OPTIONAL ACCESSORIES

LK4471LHB - Locking Hose Bib
97890C - Accessory - Direct Bury Adaptor

In keeping with our policy of continuing product improvement, Elkay reserves the right to change product specifications without notice. Please visit elkay.com for the most current version of Elkay product specification sheets. This specification describes an Elkay product with design, quality, and functional benefits to the user. When making a comparison of other producers' offerings, be certain these features are not overlooked.

Elkay REV 08312019
[LK4420BF1UDB](#)

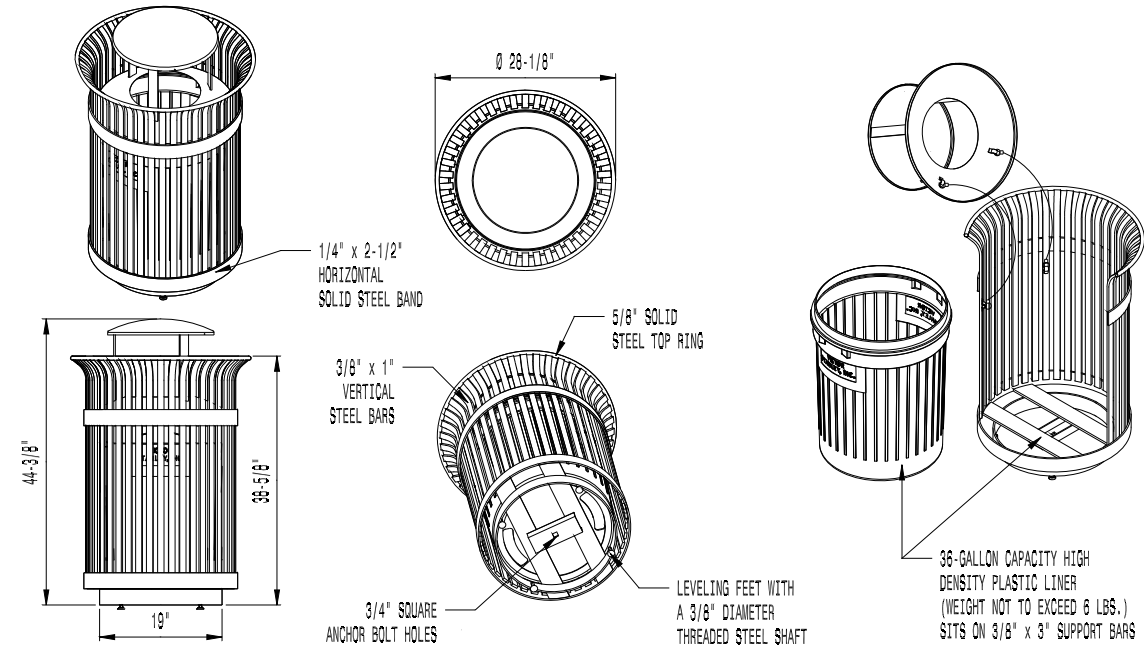
2222 Camden Court
Oak Brook, IL 60523

© 2019 Page 1
LK4420BF1UDB_spec.pdf



NOTE: PHOTOGRAPHS DEPICT TRUE
COLOR AND PRODUCT SELECTION.

* ALL DIMENSIONS ARE IN INCHES *



AVAILABLE OPTIONS:
POWDER COATING
10 STANDARD COLORS, 2 OPTIONAL METALLIC COLORS,
CUSTOM COLORS (INCLUDING THE RAL RANGE)
CUSTOM PLAQUES AND DECALS
AVAILABLE WITH STEEL PLAQUES IN VARIOUS SIZES AND PRESSURE SENSITIVE
VINYL OUTDOOR DECALS

LIDS
STANDARD TAPERED FORMED LID. AVAILABLE WITH OPTIONAL DOME LID,
DOME LID WITH STAINLESS STEEL ASHTRAY, CONVEX LID, CONVEX LID
WITH SELF CLOSING DOOR, RAIN BONNET LID (AS SHOWN), RAIN BONNET LID WITH
STAINLESS STEEL ASHTRAY, AND RECYCLE LIDS. ASHTRAYS AVAILABLE WITH
OPTIONAL ASHTRAY COVER.
SECURITY
LID IS SECURED WITH VINYL COATED GALVANIZED STEEL AIRCRAFT CABLE.
CABLE IS LOOPED AROUND WELDED IN PLACE ATTACHMENT BRACKETS AND
CRIMPED IN PLACE. AVAILABLE WITH OPTIONAL MOUNT WITH
3 IN-LINE ANCHOR HOLES AND OPTIONAL BOTTOM PLATE COVER.

- NOTES:
1. DRAWINGS NOT TO SCALE. DO NOT SCALE DRAWINGS.
 2. ALL FABRICATED METAL COMPONENTS ARE STEEL SHOTBLASTED, ETCHED, PHOSPHATIZED, PREHEATED, AND ELECTROSTATICALLY POWDER-COATED WITH T.G.I.C. POLYESTER POWDER COATINGS. PRODUCTS ARE FULLY CLEANED AND PRETREATED, PREHEATED AND COATED WHILE HOT TO FILL CREVICES AND BUILD FILM COATING. COATED PARTS ARE THEN FULLY CURED TO COATING MANUFACTURER'S SPECIFICATIONS. THE THICKNESS OF THE RESULTING FINISH AVERAGES 8-10 MILS (200-250 MICRONS).
 3. THIS VICTOR STANLEY, INC. PRODUCT MUST BE PERMANENTLY AFFIXED TO THE GROUND. CONSULT YOUR LOCAL CODES FOR REGULATIONS.
 4. VICTOR STANLEY, INC., PLASTIC INNER LINERS ARE MOLDED ON TOOLING DESIGNED FOR AND OWNED BY VICTOR STANLEY, INC. THEY OFFER MAXIMUM CAPACITY AND STRENGTH WITH LIGHTWEIGHT CONSTRUCTION USING CRITICAL MOLDED RIBS, INTEGRAL HANDHOLDS, AND HIGH-STRENGTH MATERIALS. THIS MINIMIZES HANDLING DIFFICULTY AND FACILITATES EASY EMPTYING AND STORAGE WHILE AFFORDING LONG SERVICE LIFE.
 5. ANCHOR BOLT(S) NOT PROVIDED BY VICTOR STANLEY, INC.
 6. FOR HIGH SALT ABUSIVE CLIMATES, HOT-DIP GALVANIZING BEFORE POWDER COATING IS AVAILABLE. HOT-DIP GALVANIZING IS PERFORMED FOR VICTOR STANLEY, INC. BY AN EXPERIENCED QUALIFIED FIRM TO WHICH PRODUCTS ARE SHIPPED FOR GALVANIZING. HOT-DIP GALVANIZING INCLUDES AN AGGRESSIVE PRE-TREATMENT AND IMMERSION IN A TANK OF CHARGED LIQUID ZINC AT OR AROUND 860°F (460°C). THE RESULTING SURFACE IS RESISTANT TO RUST BUT HAS SOME UNEVENNESS RESULTING FROM THE BONDING OF THE ZINC TO THE STEEL SURFACE. AS A RESULT, THE POWDER-COATING SURFACE FINISH OVER THAT GALVANIZED SURFACE MAY EXHIBIT BUMPS, UNEVENNESS, AND MAY NOT BE AS SMOOTH AS THE STANDARD FINISH; THIS UNEVEN AND INCONSISTENT FINISH IS NORMAL FOR GALVANIZING. CONTACT MANUFACTURER FOR DETAILS.
 7. ALL SPECIFICATIONS ARE SUBJECT TO CHANGE. CONTACT MANUFACTURER FOR DETAILS.
 8. THIS PRODUCT IS SHIPPED FULLY ASSEMBLED.

S-42
IRONSITES® SERIES
36-GALLON LITTER RECEPTACLE
SHOWN: OPTIONAL RAIN BONNET LID

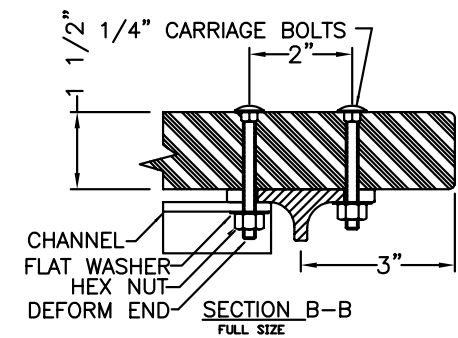
COPYRIGHT 2014 VICTOR STANLEY, INC.® ALL RIGHTS RESERVED
REV. 4/16/14 DRAWN L.D.L. 2014-336



NOTE: PHOTOGRAPH DEPICTS S-42 PRODUCT SELECTION ONLY, NOT COLOR SELECTION.



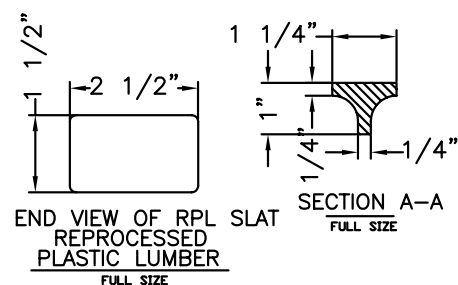
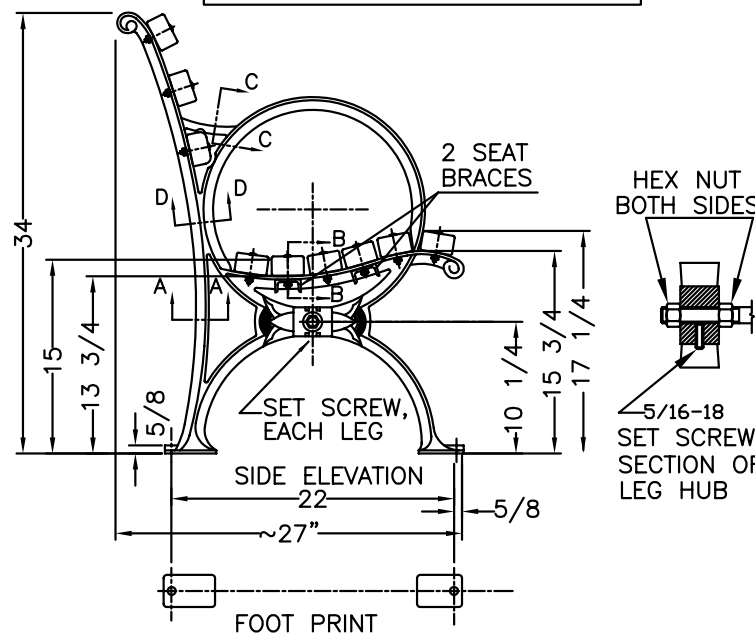
EXAMPLE OF PROJECT'S COLOR SELECTION.



RPL IS HELD TO THE BRACES BY TAPERED SCREWS WHICH ARE DRIVEN INTO THE RPL FROM THE BACK AND BOTTOM AND ARE NOT VISIBLE FROM ABOVE. McMASTER #95638A317 PIN-IN-TORX TAMPER RESIST SHEET METAL SCREW 18-8 STAINLESS STEEL, BUTTON HEAD, NO 14 SIZE, 1-1/2" LENGTH NOT VISIBLE FROM FRONT OF BENCH.

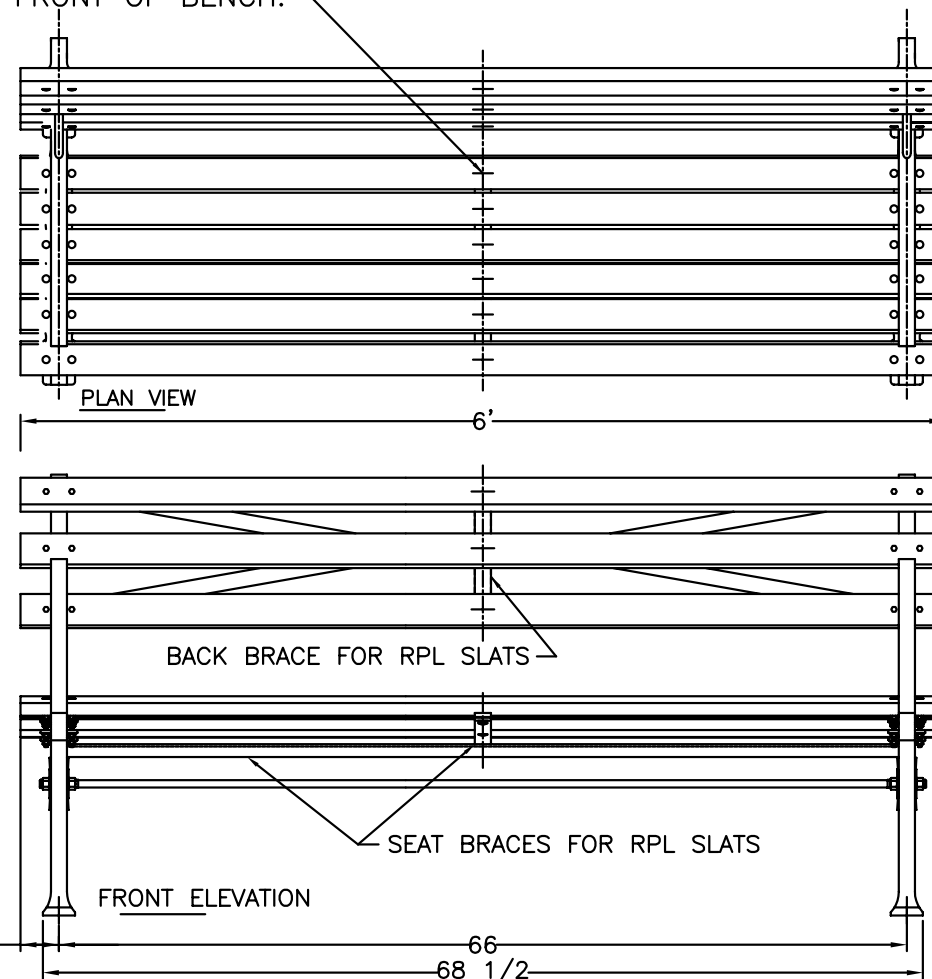
SECTION VIEW OF RPL BENCH SLAT WITH CROSS BRACE & SCREW - USED ON SEAT & BACK BRACES FROM BOTTOM & BACK OF BRACES - 16 REQ'D

NOTE: THIS DRAWING VARIES FROM STANDARD IN THAT THE DISTANCE FROM THE EDGE OF THE SLATS TO THE CENTER OF THE LEG IS 3 INCHES.



6 FOOT BENCH LENGTH OF AVAILABLE BENCHES: 4', 5', 6', 8' BENCHES 8' LONG HAVE 3 LEGS

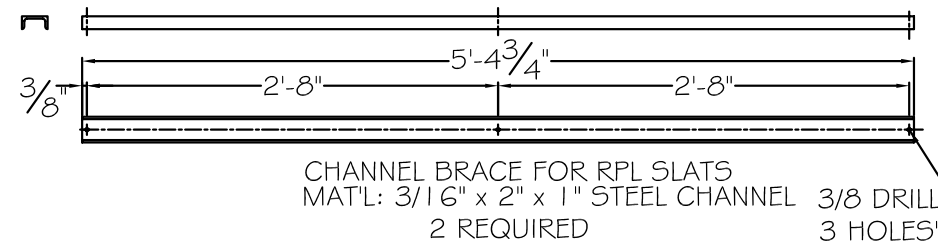
WHEN USED, ANCHOR BOLTS ARE TO BE INSTALLED IN EACH FOOT OF EACH LEG.



COLOR:
RPL

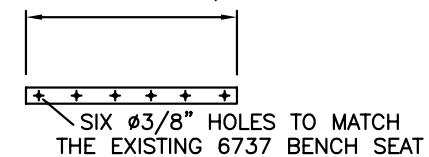
CI & STEEL: BLACK

MATERIALS:
X-BRACING: 3/16" X 1 1/4" HOT ROLLED STEEL
BENCH LEGS: CAST DUCTILE IRON
BENCH SLATS: RECYCLED PLASTIC LUMBER
SMALL FASTENERS (CARRIAGE BOLTS, NUTS AND WASHERS) STAINLESS STEEL
TIE ROD: 5/8" DIA HOT ROLLED STEEL WITH 5/8 - 11 CUT THREADS & STEEL HEX NUTS
RPL BRACES: 3/16" & 3/8" X 1 1/4" HRS
CHANNEL: 3/16" X 1" X 2" STEEL

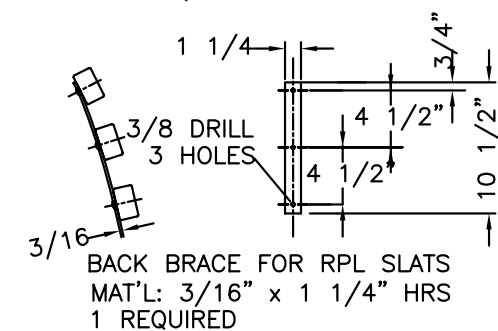


CHANNEL BRACE FOR RPL SLATS
MAT'L: 3/16" X 2" X 1" STEEL CHANNEL 3/8 DRILL 3 HOLES"

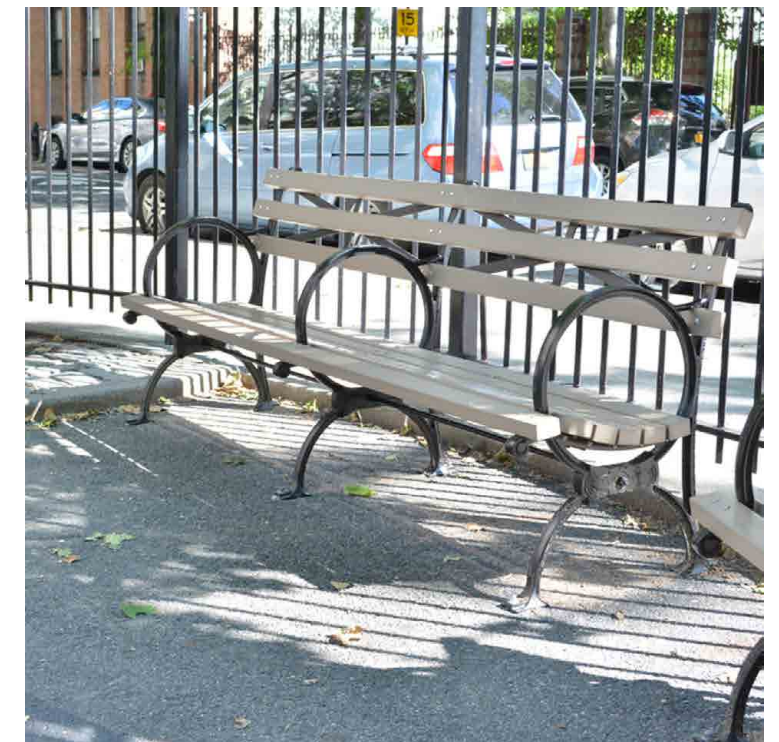
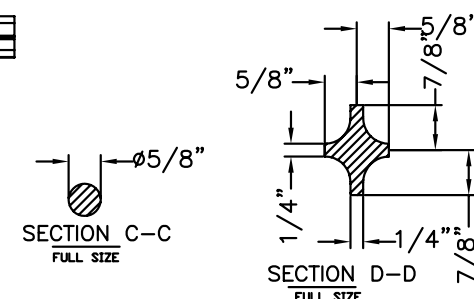
2 REQUIRED
HORIZ MEAS 16 7/16"
TRUE MEAS 12-4 3/4"



SEAT BRACE FOR RPL SLATS
MAT'L: 3/8" X 1 1/2" HRS
1 REQUIRED



BACK BRACE FOR RPL SLATS
MAT'L: 3/16" X 1 1/4" HRS
1 REQUIRED



KENNETH LYNCH & SONS
114 WILLENBROCK ROAD OXFORD, CT 06478
PHONE 203-264-2831 FAX 203-264-2833

6737 WORLDS FAIR BENCH		
Scale FAX	Date 2/17/12	Drawn S.L.A.
RECYCLED PLASTIC SLATS		6' LONG
MAT'L: AS NOTED	CONTRACT #	
#6737-6-RPL-FX-2012 NYC		



Hoop Rack



FINISH OPTIONS

Galvanized



Stainless

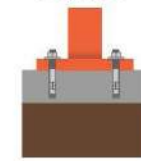


Powder Coat



MOUNT OPTIONS

Surface



In-Ground



Tamper-resistant fasteners available upon request

Rail



OPTIONAL LEAN BAR



Hoop Rack

The Hoop Rack is a proven design that provides high security and easy bike parking. The Hoop Rack uses thick pipe construction and the full radius of the bend makes the Hoop an attractive and functional bike rack. This bike rack can also be put on rails for mobility and is popular in bike corrals.

©2021

©2021