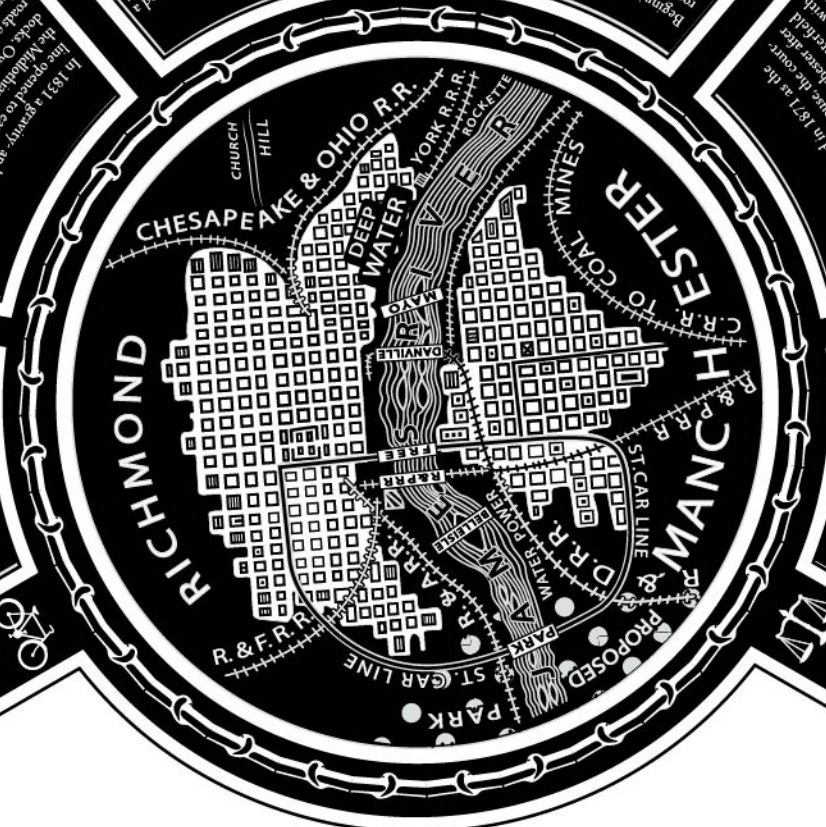
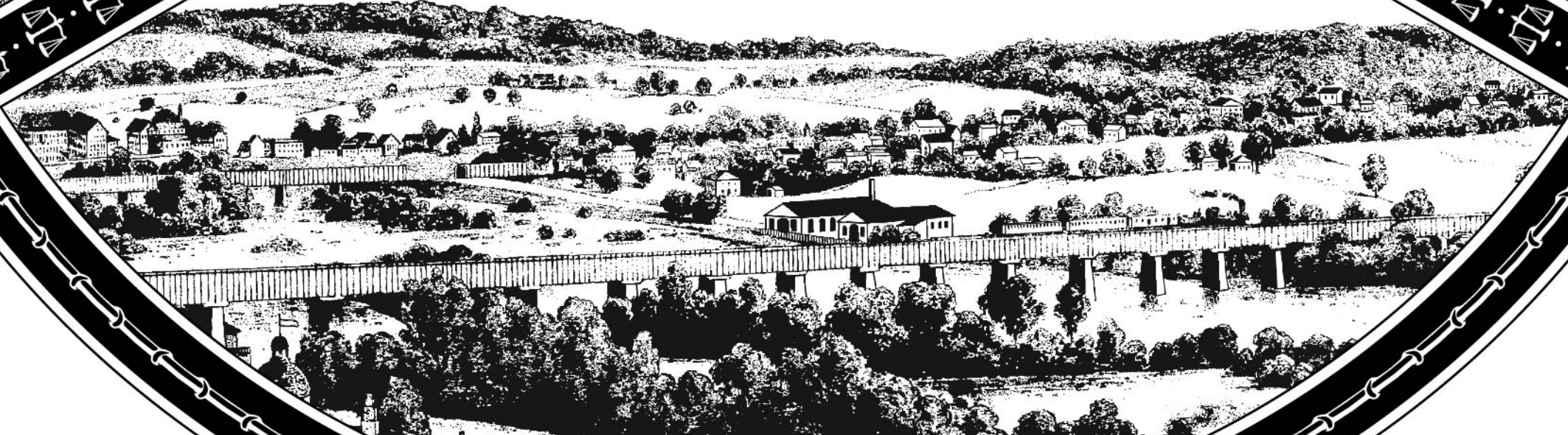


MANCHESTER, VIRGINIA

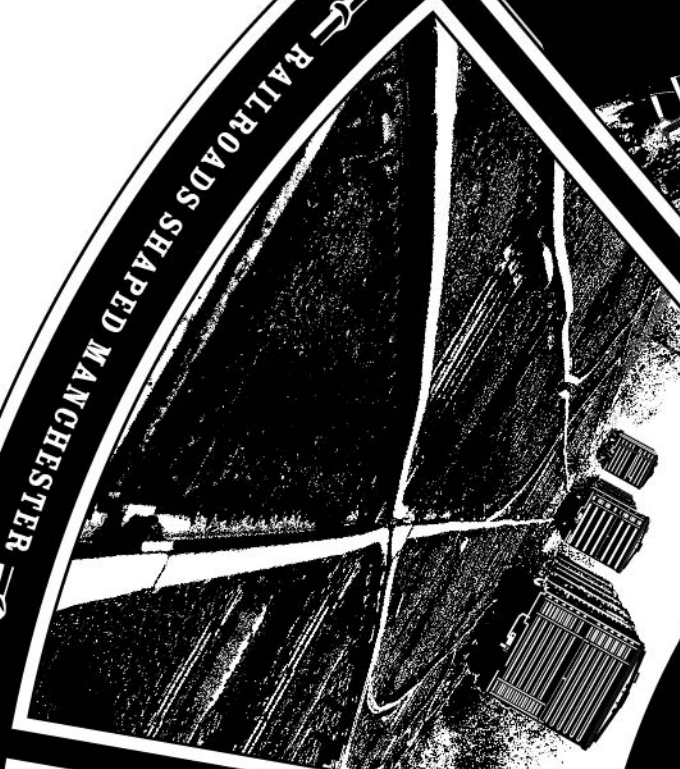


The potential for hydro-powered industry on the south bank of the James River was recognized in 1732, when the first mill was built in the area. Construction of the first dam and mill was completed in 1769. The area was known as a vital milling site. Mills, rock quarries, and other industries were established in the area. The dam and mill canal remain in place along the river.

In 1769, the town of Manchester was founded by William Byrd III. The town was established as a manufacturing center, and it prospered as a center of commerce and industry. The importance of Manchester as a part of the metropolitan Richmond area was recognized in 1910. Campaign banners for the consolidation are shown hanging over Hall Street.



WATER POWER FUELED THE MILLS OF MANCHESTER

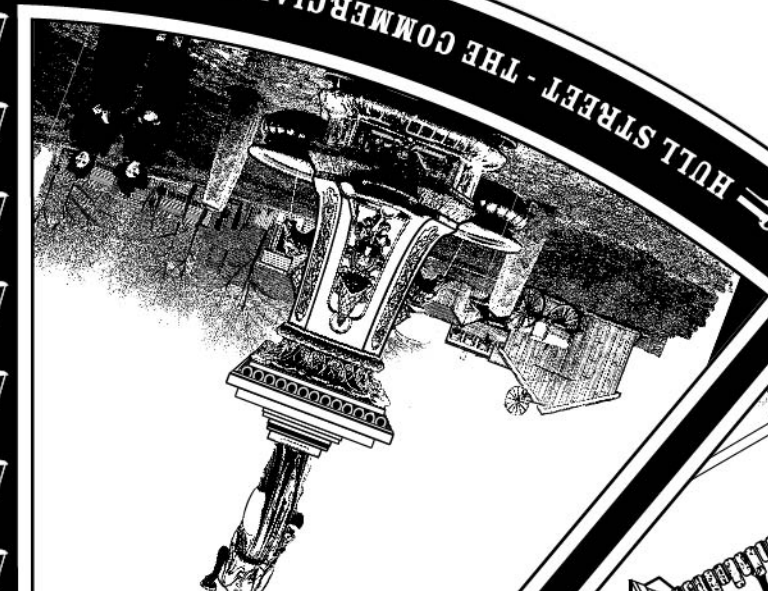


RAILROADS SHAPED MANCHESTER

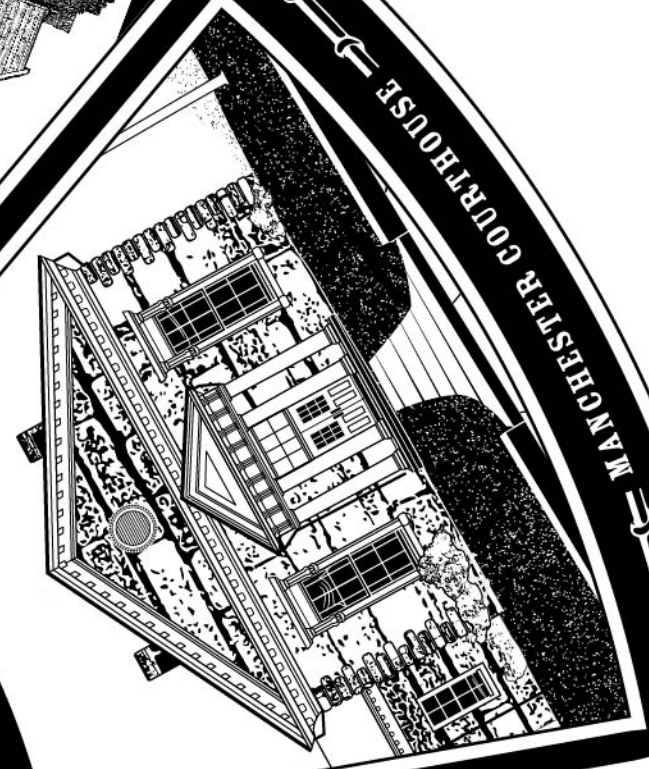
In 1851, a ferry and a mill, powered by the James River, were built in the area. The mill was used to produce flour and other products. The ferry was used to transport goods and passengers across the river. The mill and ferry were important to the local economy.

In 1789 the Mayo family received a charter to construct and operate a toll bridge between Richmond and Manchester. The bridge was built in 1793 and was known as the Mayo Bridge. It was a toll bridge and was used to transport goods and passengers across the river.

Beginning in the 18th century, the commercial Hill Street, developed as a road that aligned with the Mayo Bridge. Hill Street was a major thoroughfare and was used to transport goods and passengers. The street was named in honor of the Mayo family.

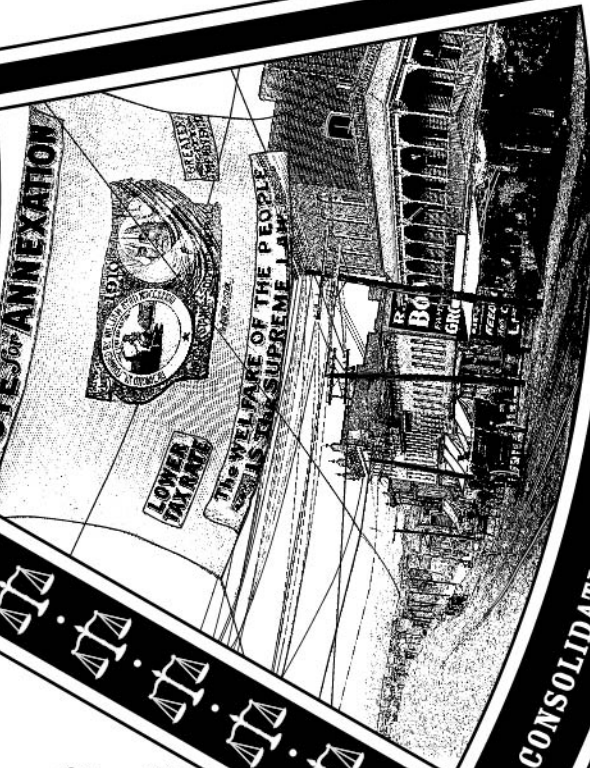


HILL STREET - THE COMMERCIAL CORRIDOR



MANCHESTER COURTHOUSE

On 12th Street, the Mayo family received a charter to construct and operate a toll bridge between Richmond and Manchester. The bridge was built in 1793 and was known as the Mayo Bridge. It was a toll bridge and was used to transport goods and passengers across the river.



CONSOLIDATION OF MANCHESTER BY RICHMOND