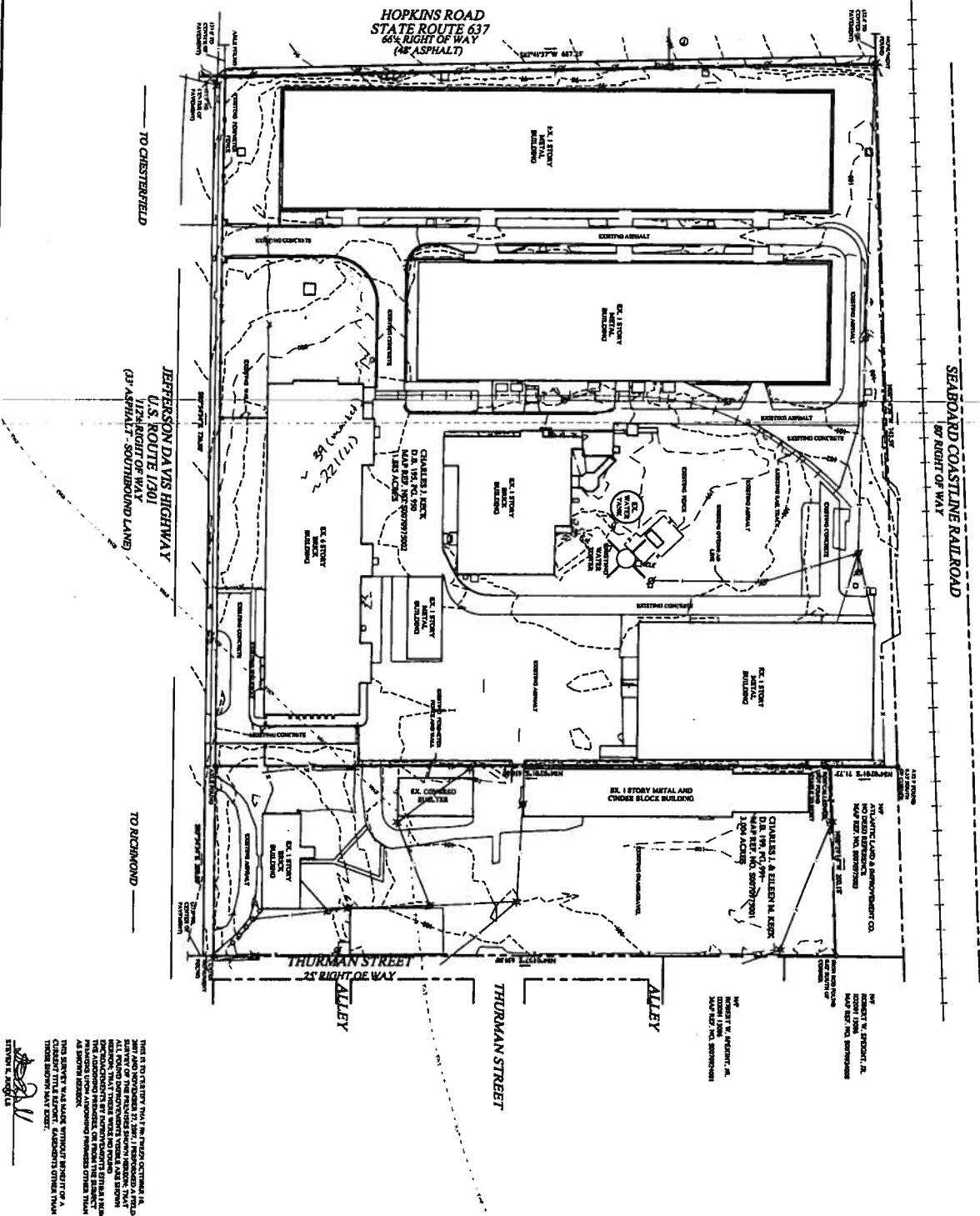
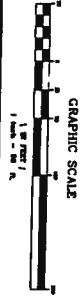




LEGEND

- PROPERTY LINE
- PROPERTY CORNER
- BUILDING OUTLINE
- SIDEWALK
- CONCRETE
- FINISH PAVT
- FINISH LINE
- TELEPHONE SERVICE
- TELEPHONE SERVICE
- POWER POLE
- LIGHT POLE
- OVERHEAD DISTRIBUTION LINE
- UNDERGROUND DISTRIBUTION LINE
- APPROXIMATE WALL LIMITS



PLAT SHOWING SURVEY OF
TWO PARCELS OF LAND
 LOCATED AT THE NORTHWEST CORNER OF
 HOPKINS ROAD AND JEFFERSON DAVIS HIGHWAY
 RECORDED IN D.B. 195, PG. 150 & D.B. 189, PG. 991
 CITY OF RICHMOND, VIRGINIA

DATE:	11-28-2007
JOB NUMBER:	V1870268
SCALE:	1"=40'
DRAWN BY:	BJL
DESIGNED BY:	BJL
APPROVED BY:	BJL
FILE NO. REFERENCE:	

McCRONE

- Engineering
- Environmental Sciences
- Construction Services
- Land Planning & Surveying

ANNAPOLIS • CENTREVILLE • DOVER • ELKTON • RICHMOND • SALISBURY

800 MCCRONE PL. PARK DRIVE SUITE 100
 RICHMOND, VA 23260

REVISIONS

REV. #	DATE	DESCRIPTION



