

NEW CLAY HOUSE FOR VIRGINIA SUPPORTIVE HOUSING

revised 11.14.14

Code and Zoning summary

Existing R-2 with 47 units, 1 apartment, common space and office provider rooms occupying roughly 17,000 square feet.

Adjacent unoccupied space of roughly 3,000 square feet.

Proposed R-2 with 80 units, 1 apartment, common spaces and office provider rooms occupying a total of approximately 56,000 square feet.

Zoning:

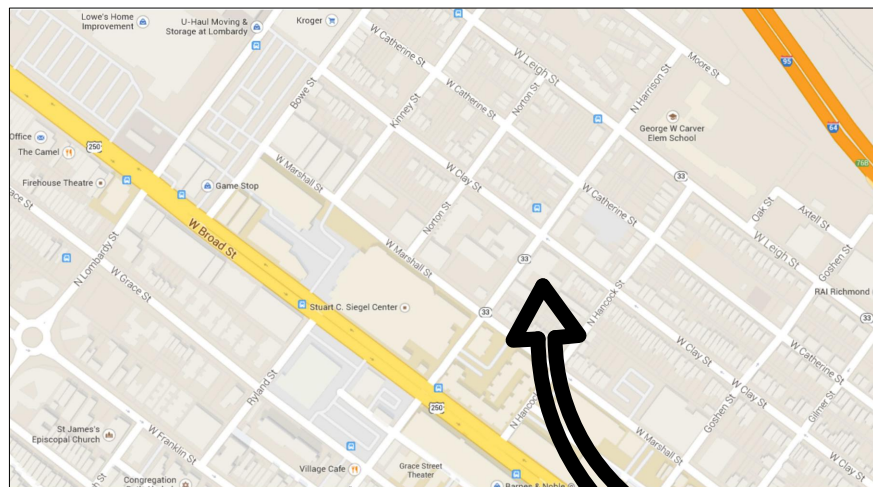
M-1 Industrial underlying zoning
Existing Special Use Permit # 89-356-90-14
Site = 26,144 SF or 0.60 Acres

parking

6 spaces existing
30 spaces proposed

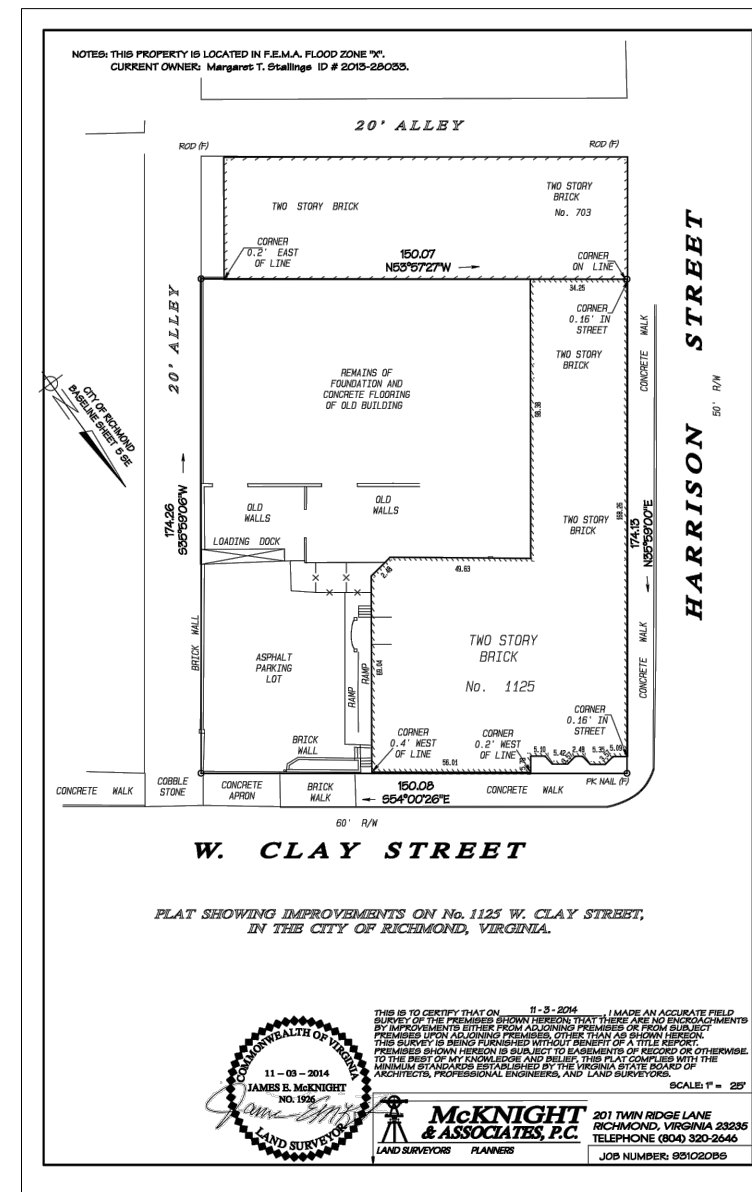
Table of Contents

T-1	Title Sheet
AB-1	Existing Floor Plans
A-100	Proposed Ground and First Floor Plans
A-101	Proposed Second and Third Floor Plans
A-102	Proposed Fourth Floor Plan
A-200	Exterior Elevations
A-201	Exterior Elevations



VICINITY MAP

SITE



VICINITY MAP
Not To Scale

SEAL

REVISIONS

P. 804.358.4993
F. 804.358.8211

RICHMOND, VA 23220

JOHANNAS DESIGN GROUP

1901 WEST CARY STREET

New Clay House

SHEET TITLE

TITLE SHEET

PROJECT NO.

1470

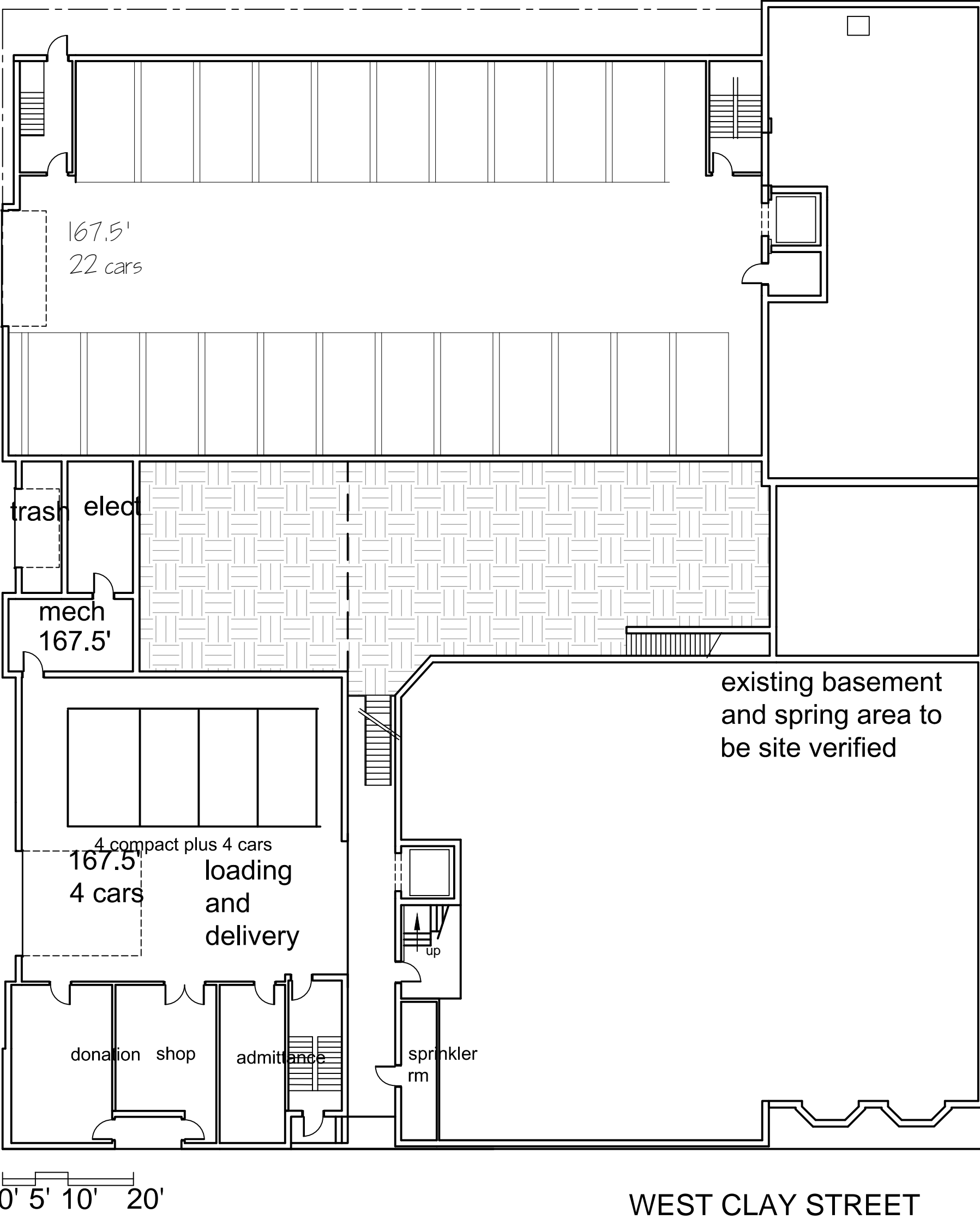
DATE

11.7.14

SHEET NO.

T-1

revised 11.14.14

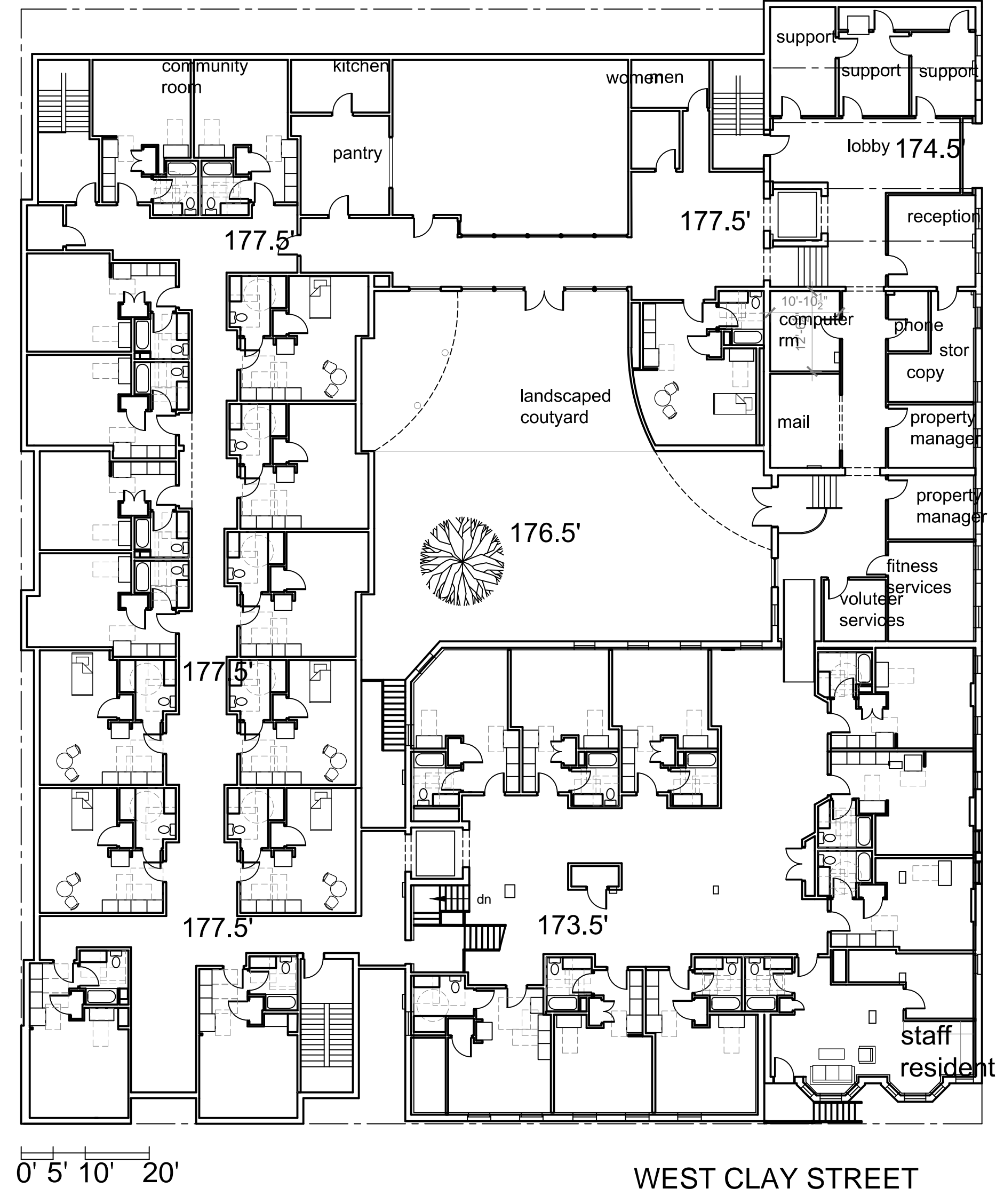


NORTH HARRISON STREET

PROPOSED GROUND FLOOR

0 8' 16' 32'

SCALE: 1/16" = 1'-0"



NORTH HARRISON STREET

PROPOSED FIRST FLOOR

0 8' 16' 32'

SCALE: 1/16" = 1'-0"

SEAL

REVISIONS

P 804.358.4993
F 804.358.8211

1901 WEST CARY STREET RICHMOND, VA 23220

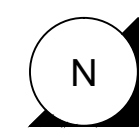
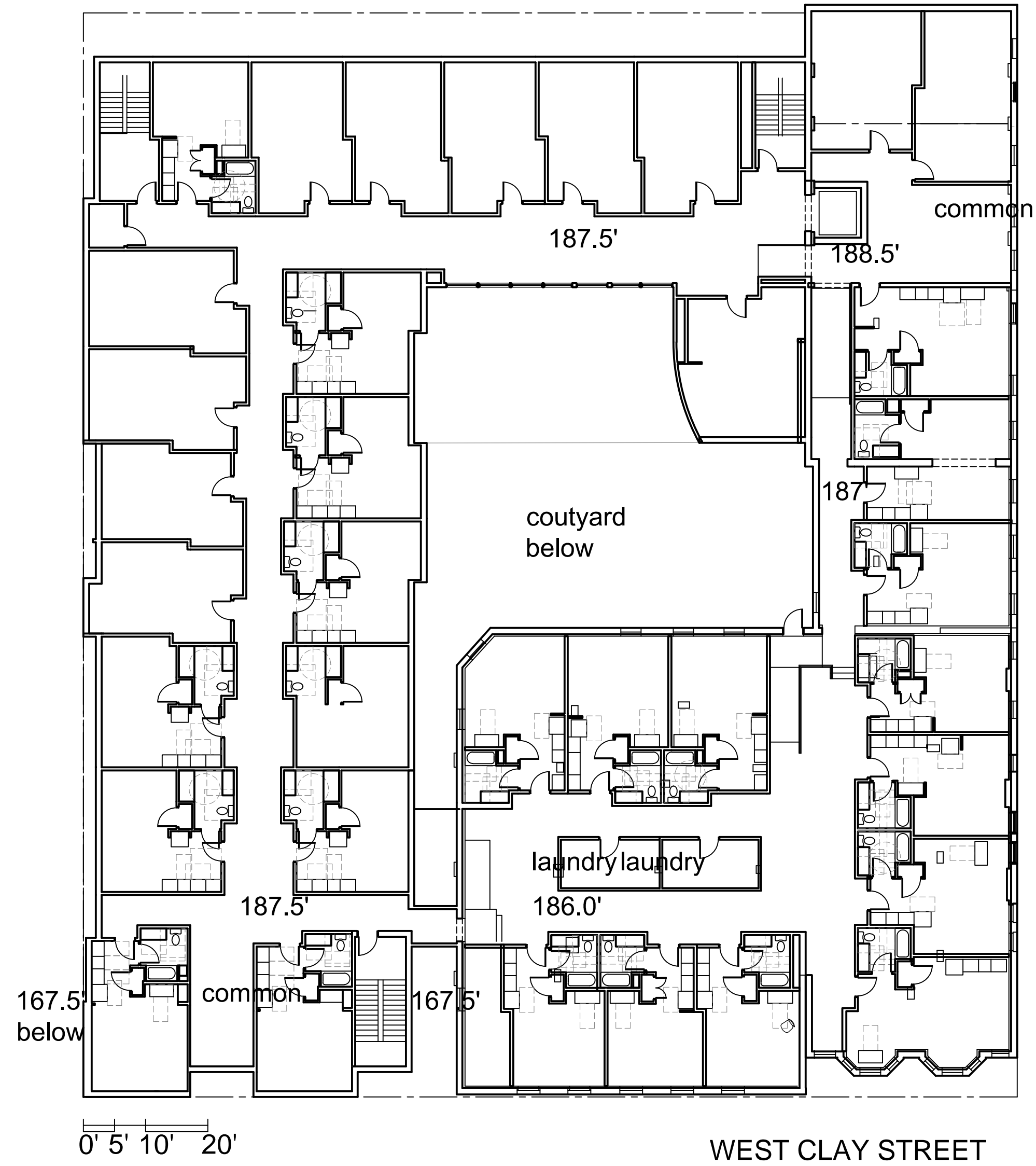
JOHANNAS DESIGN GROUP

New Clay House

SHEET TITLE	PROPOSED FLOOR PLANS
PROJECT NO.	1470
DATE	date
SHEET NO.	A-100

November 14, 2014
New Clay House, 1470 West Cary Street, Richmond, VA 23220
JOHANNAS DESIGN GROUP, 1901 West Cary Street, Richmond, VA 23220

November 14, 2014
1225 W. Clay St. 0A Supportive Housing for Homeless Clay House/Sheet A-101 Floor Plans.dwg



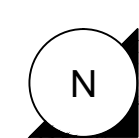
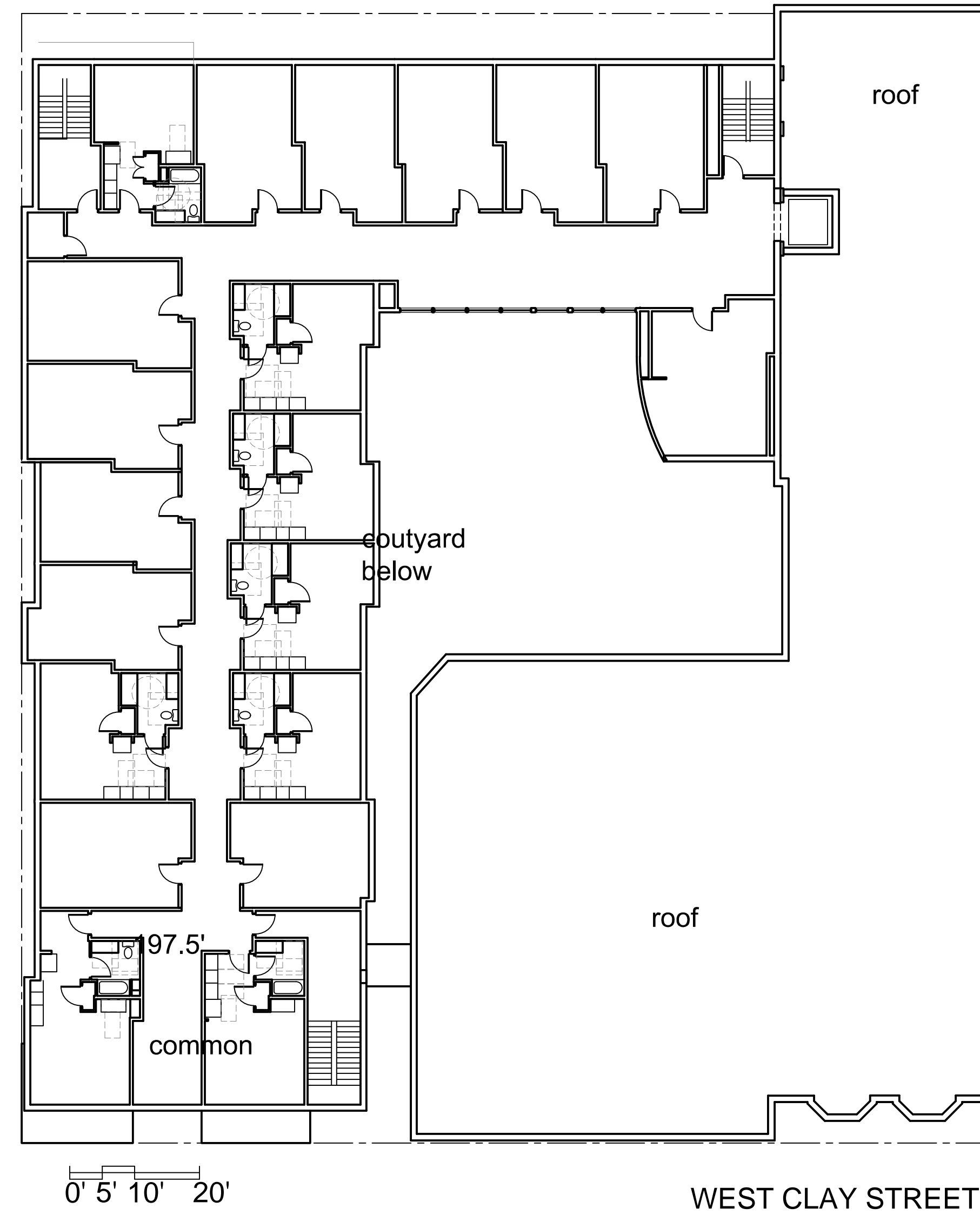
PROPOSED SECOND FLOOR

SCALE: 1/16" = 1'-0"

NORTH HARRISON STREET

WEST CLAY STREET

revised 11.14.14



PROPOSED THIRD FLOOR

SCALE: 1/16" = 1'-0"

NORTH HARRISON STREET

WEST CLAY STREET

SEAL
REVISIONS
P 804.358.4993
F 804.358.8211
1901 WEST CARY STREET RICHMOND, VA 23220
JOHANNAS DESIGN GROUP

New Clay House

SHEET TITLE

PROPOSED FLOOR PLANS

PROJECT NO.

1470

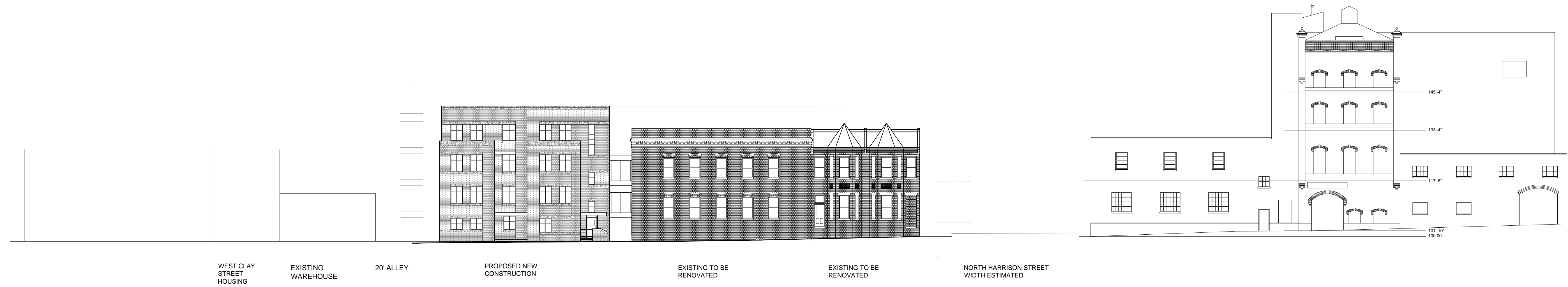
DATE

11.7.14

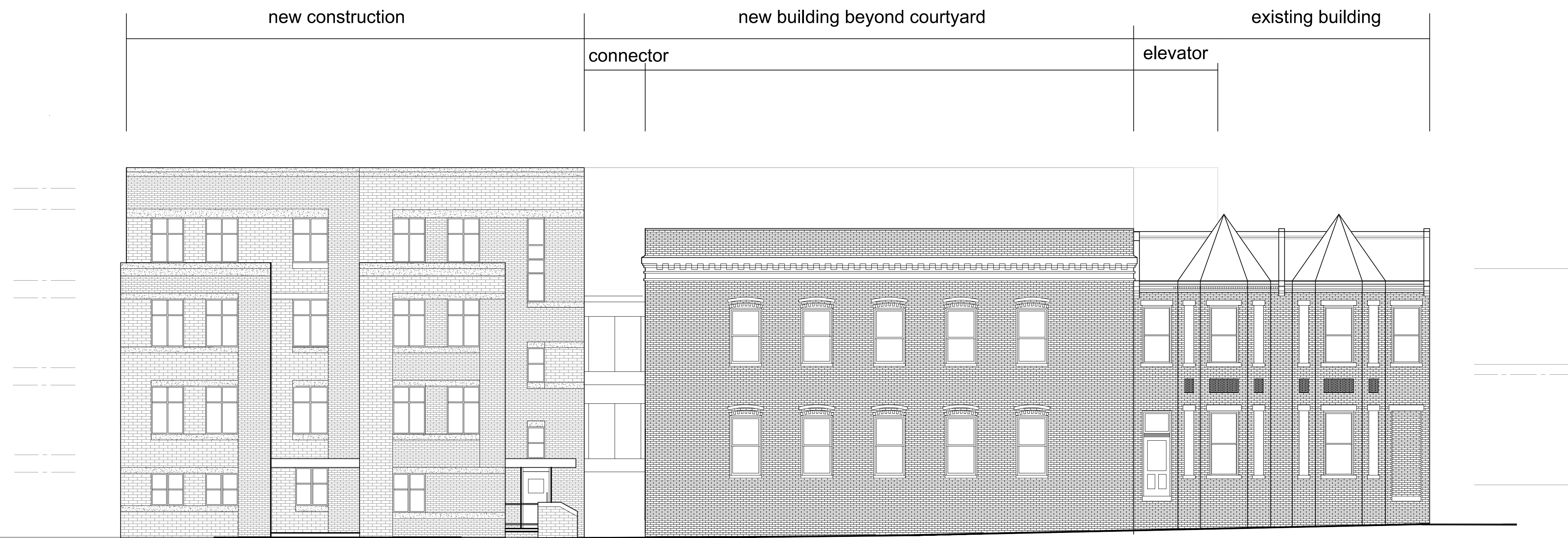
SHEET NO.

A-101

revised 11.14.14



WEST CLAY STREET LOOKING SOUTH
NOT TO SCALE



WEST CLAY STREET ELEVATION LOOKING SOUTH

1/8"

SEAL

REVISIONS

P 804.358.4993
F 804.358.8211

1901 WEST CARY STREET RICHMOND, VA 23220

JOHANNA'S DESIGN GROUP

NEW CLAY HOUSE

SHEET TITLE

ELEVATIONS

ViewportScale

PROJECT NO.

DATE

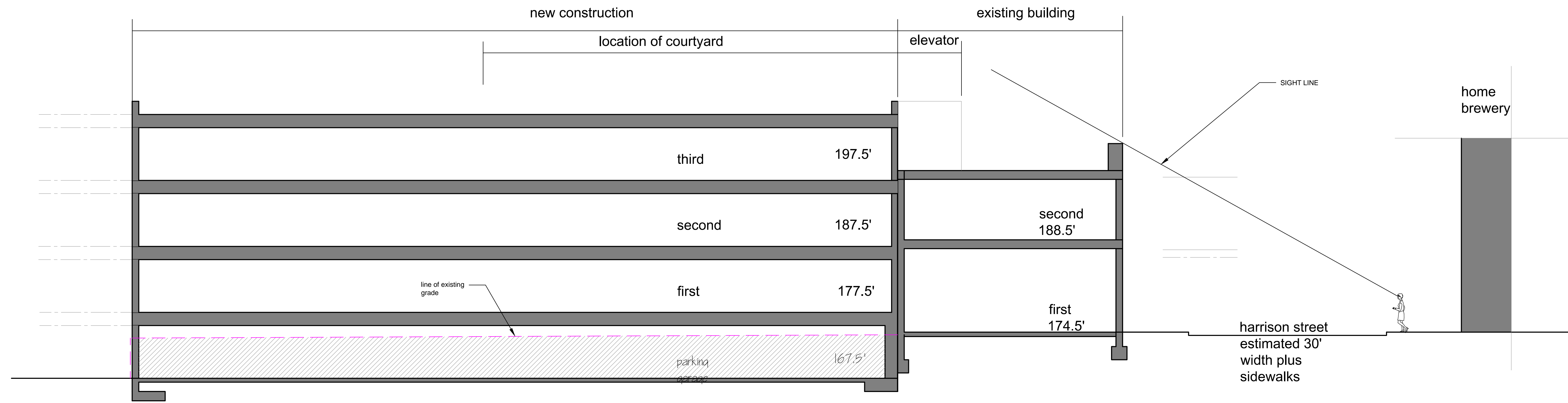
1470

9.26.2007

SHEET NO.

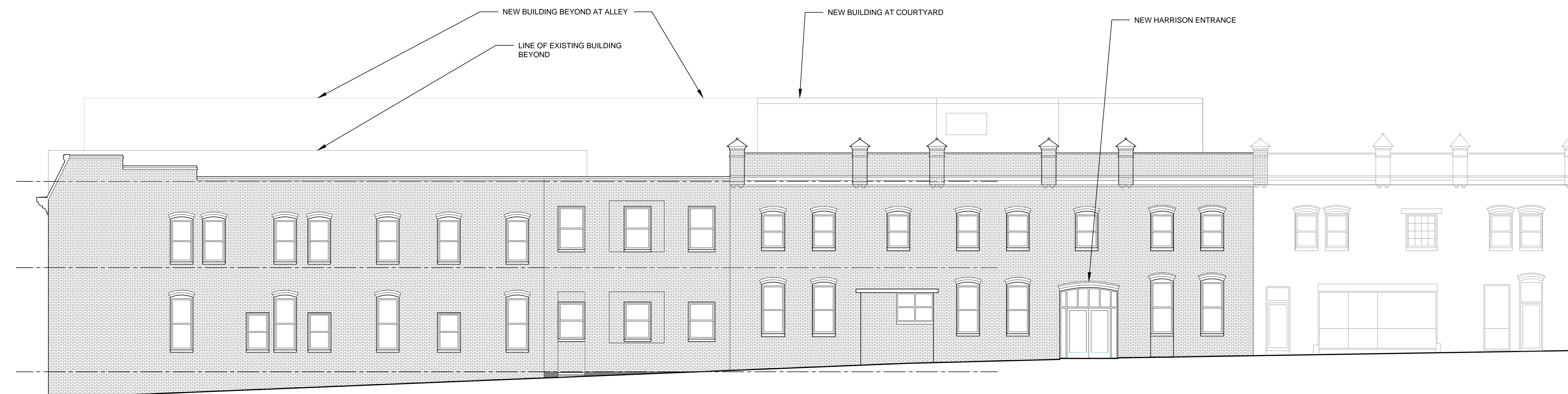
A-200

revised 11.14.14



SCHEMATIC SECTION FROM ALLEY TO HARRISON STREET

1/8"



EXISTING TO BE RENOVATED

EXISTING TO BE RENOVATED

NOT IN PROJECT

NORTH HARRISON STREET ELEVATION LOOKING EAST

1/8"

SEAL

REVISIONS

P 804.358.4993
F 804.358.8211

1901 WEST CARY STREET RICHMOND, VA 23220

JOHANNAS DESIGN GROUP

NEW CLAY HOUSE

SHEET TITLE

ELEVATIONS

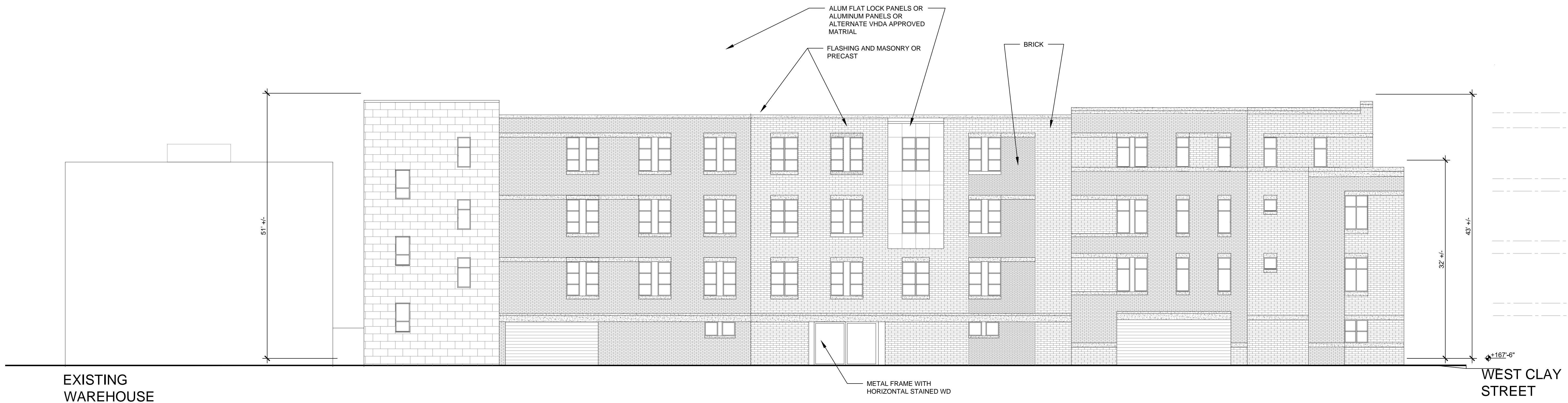
PROJECT NO.
1470

DATE
11.7.14

SHEET NO.

A-201

revised 11.14.14



ALLEY ELEVATION LOOKING WEST

1/8"

SEAL

P 804.358.4993
F 804.358.8211

1901 WEST CARY STREET RICHMOND, VA 23220

JOHANNAS DESIGN GROUP

REVISIONS

NEW CLAY HOUSE

SHEET TITLE

ELEVATIONS

PROJECT NO.
1470

DATE
11.14.14

SHEET NO.

A-202