

# THE MILL SCULPTURE RELOCATION

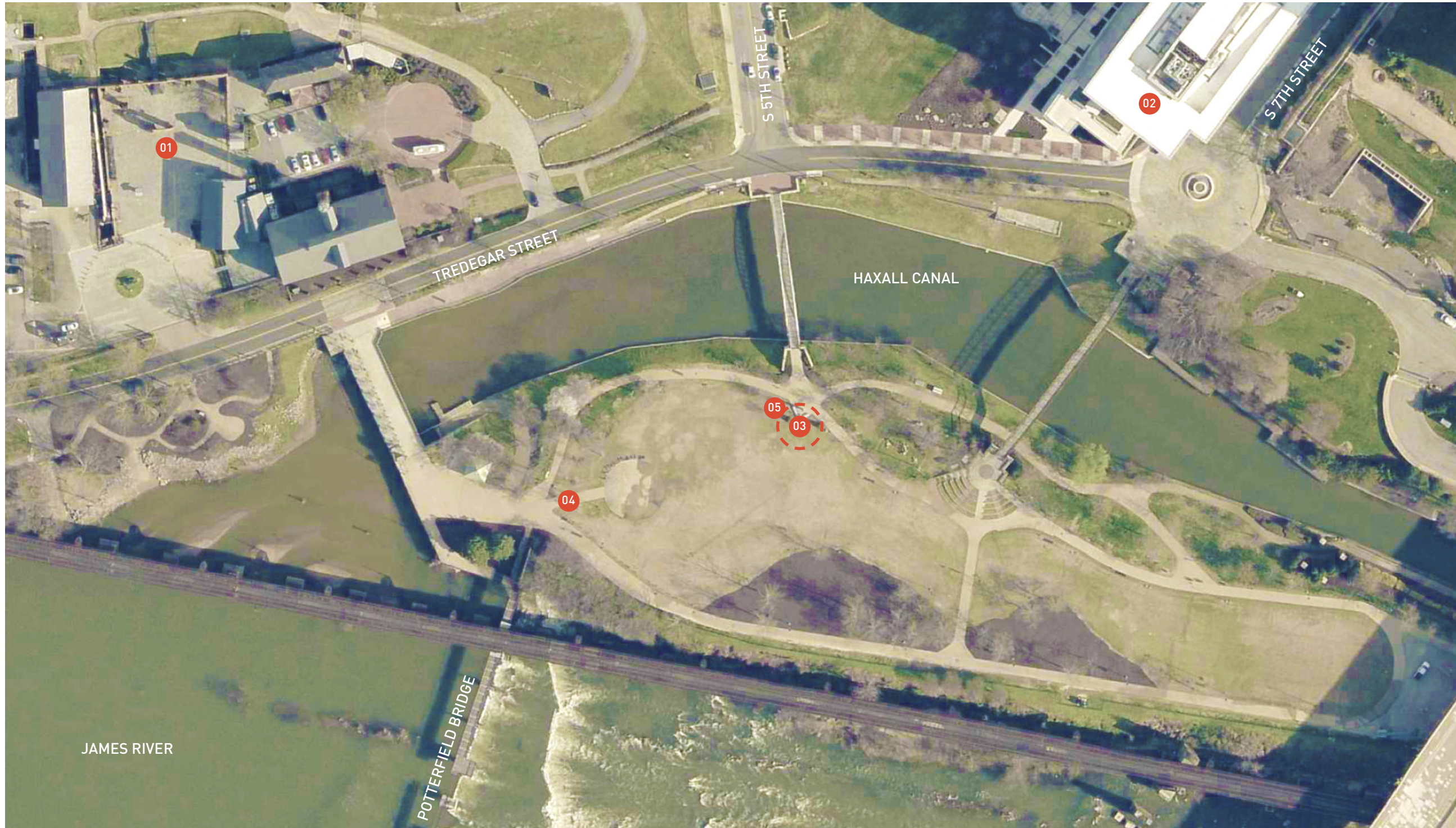
These DESIGN STUDY, undertaken by 3north, PLLC in 2018, are prepared exclusively for Venture Richmond.  
All content © 3north 2018.

This study may not be photocopied, scanned, archived, or retained electronically,  
or reproduced in any form, without written permission from 3north.



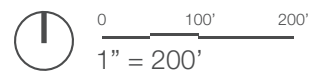
# SITE ANALYSIS





### AERIAL KEY

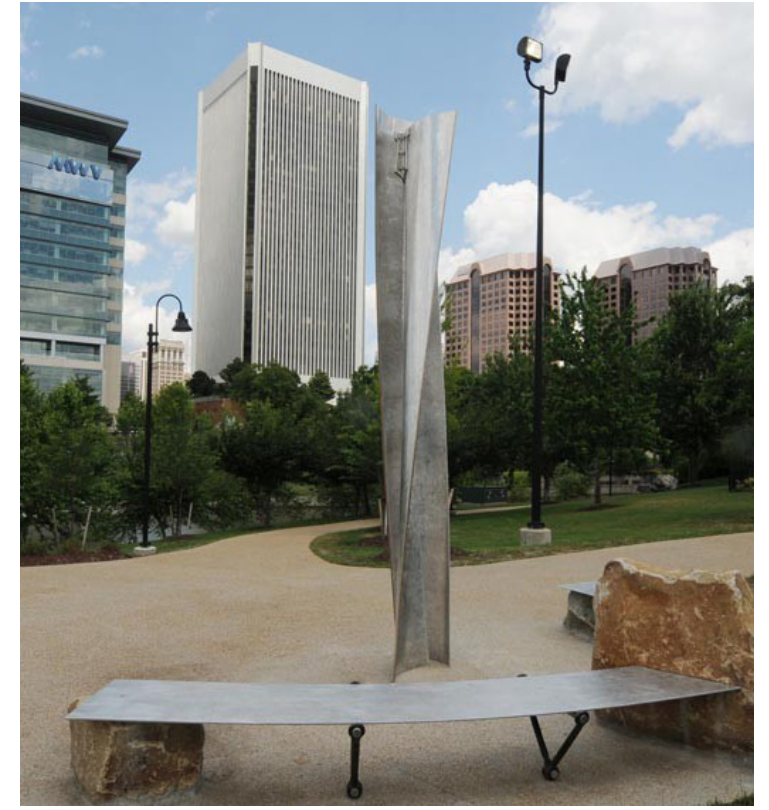
- 01 American Civil War Museum
- 02 WestRock CoStar Group
- 03 Current Sculpture Location
- 04 Proposed Sculpture Location
- 05 Proposed Emancipation Monument Location



# AERIAL

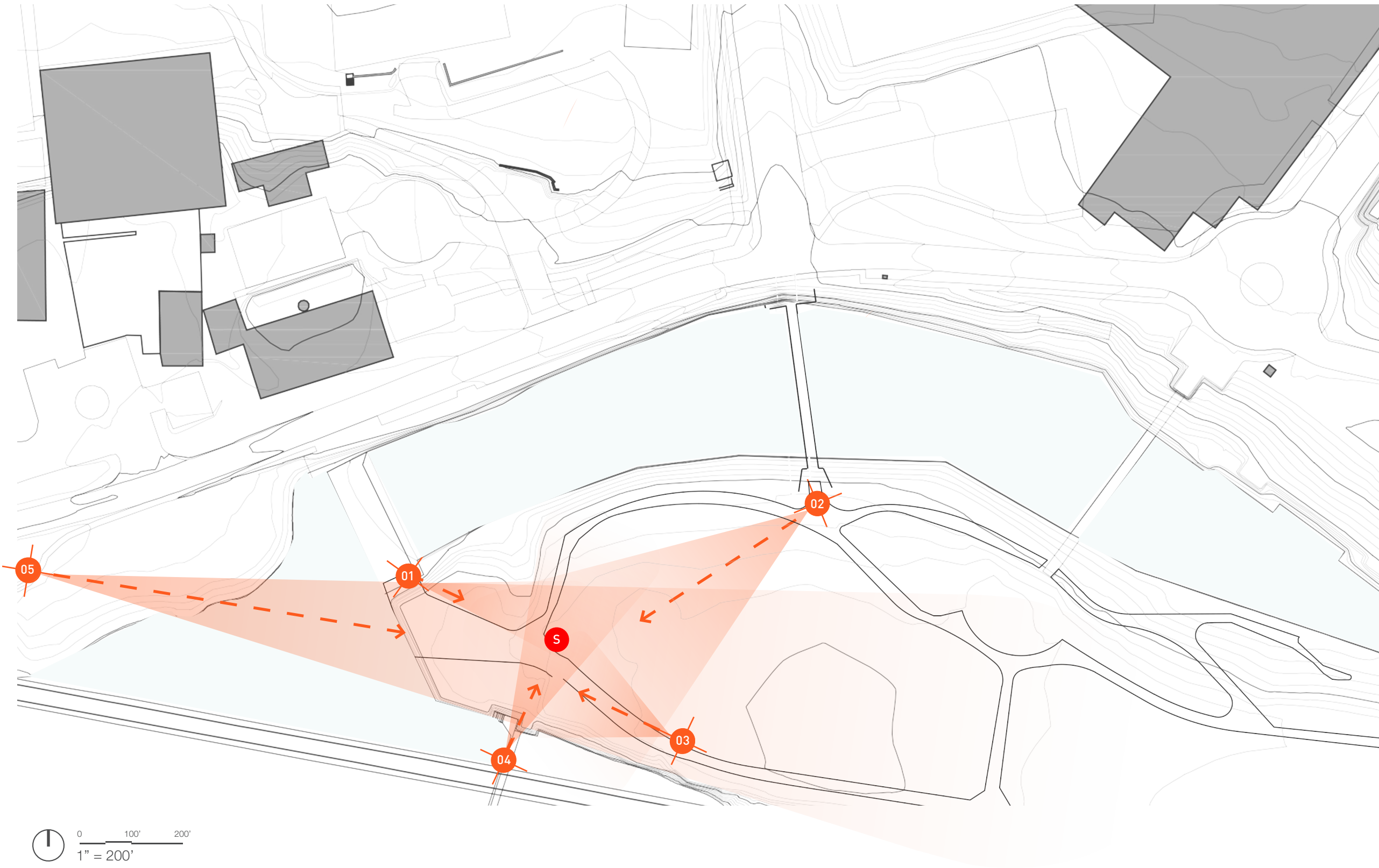
THE MILL SCULPTURE RELOCATION | DESIGN STUDY | 09 FEBRUARY 2018





# EXISTING SCULPTURE IMAGES

THE MILL SCULPTURE RELOCATION | DESIGN STUDY | 09 FEBRUARY 2018



**SITE ATTRACTIONS**

**S** Sculpture

**KEY VIEWS OF SITE**

**01** Front Approach to Sculpture

**02** View From Original Placement of Sculpture

**03** Rear Approach to Sculpture

**04** Approach from Potterfield Bridge

**05** Aerial View of Brown's Island

# VIEWSHEDS

THE MILL SCULPTURE RELOCATION | DESIGN STUDY | 09 FEBRUARY 2018





# VISUALIZATION

THE MILL SCULPTURE RELOCATION | DESIGN STUDY | 09 FEBRUARY 2018

01 FRONT APPROACH TO SCULPTURE





# VISUALIZATION

THE MILL SCULPTURE RELOCATION | DESIGN STUDY | 09 FEBRUARY 2018

02 VIEW FROM ORIGINAL PLACEMENT OF SCULPTURE







# VISUALIZATION

THE MILL SCULPTURE RELOCATION | DESIGN STUDY | 09 FEBRUARY 2018

03 REAR APPROACH TO SCULPTURE



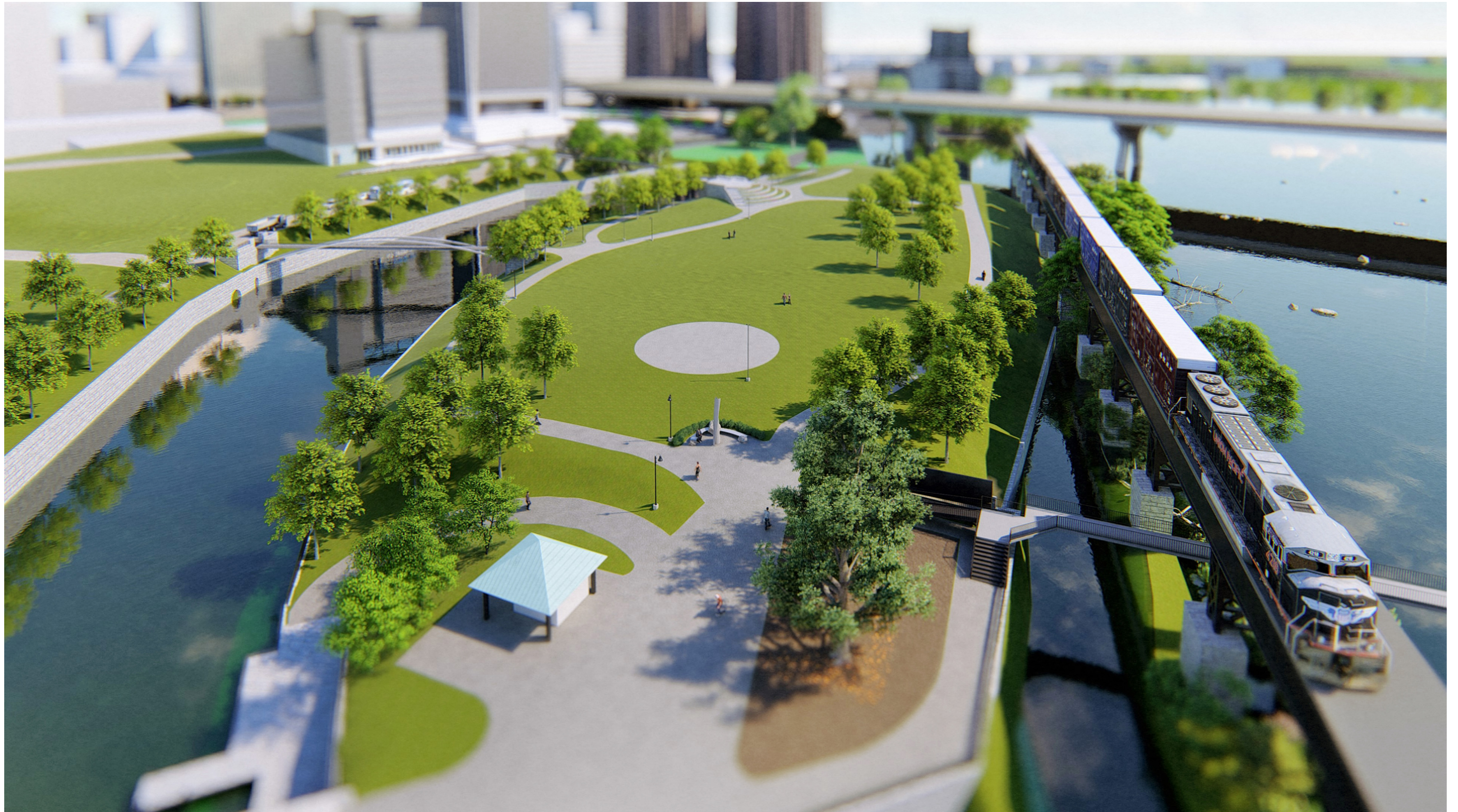


# VISUALIZATION

THE MILL SCULPTURE RELOCATION | DESIGN STUDY | 09 FEBRUARY 2018

04 APPROACH FROM POTTERFIELD BRIDGE



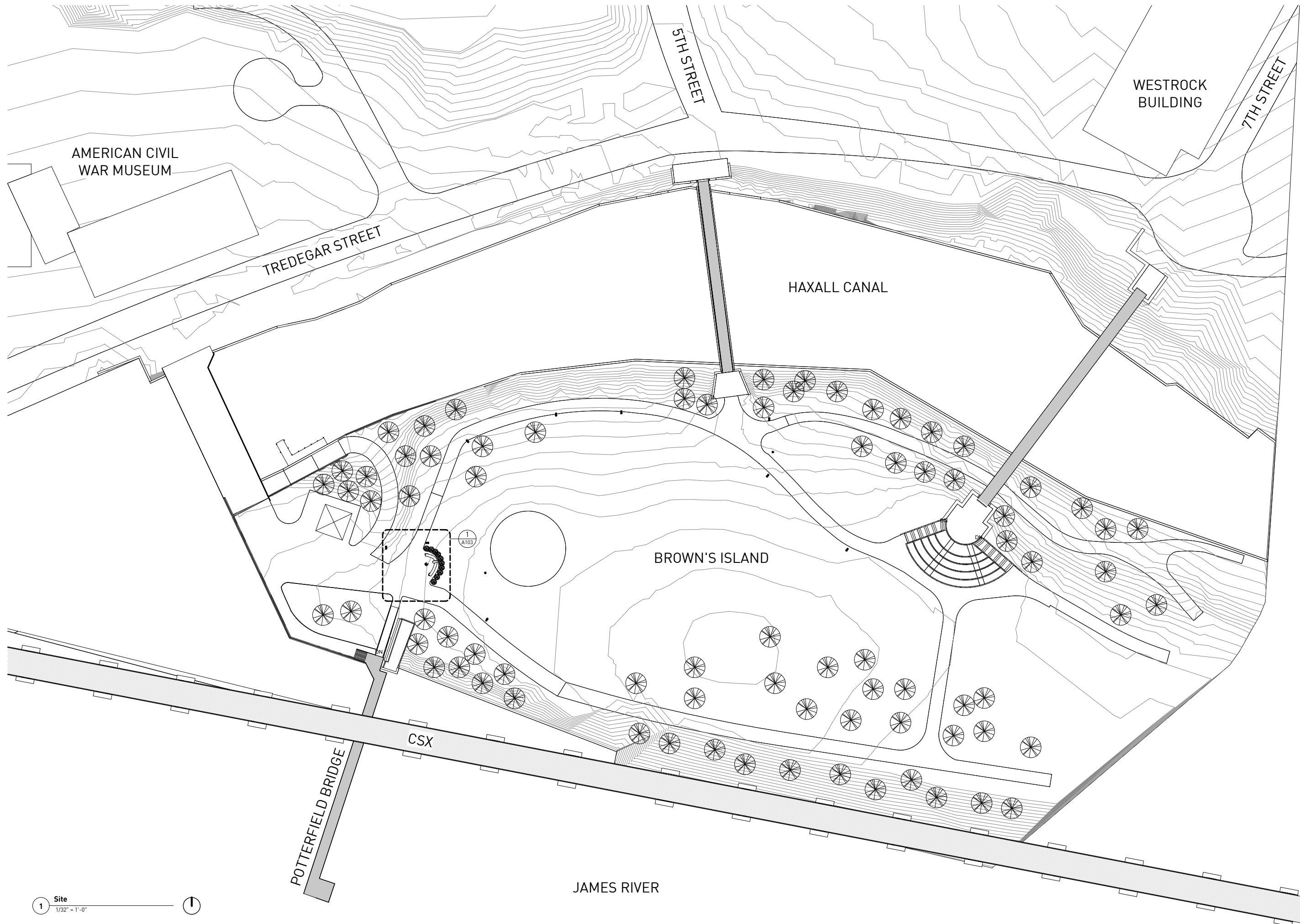


# VISUALIZATION

THE MILL SCULPTURE RELOCATION | DESIGN STUDY | 09 FEBRUARY 2018

05 AERIAL VIEW OF BROWN'S ISLAND





REVISIONS

ISTAMPI

**BROWN'S ISLAND SCULPTURE**  
 2000 TEMPLATE AVE  
 RICHMOND VA 23224

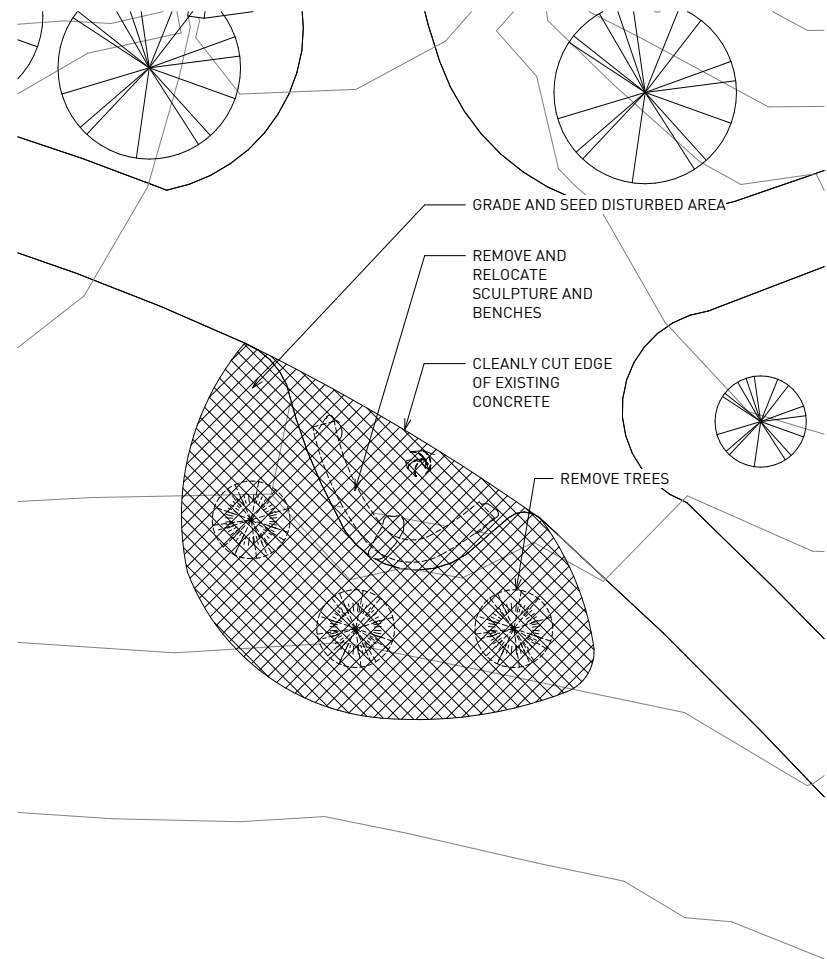
**A101**  
 SITE PLAN

©2017  
 www.3north.com  
 804 232 8900

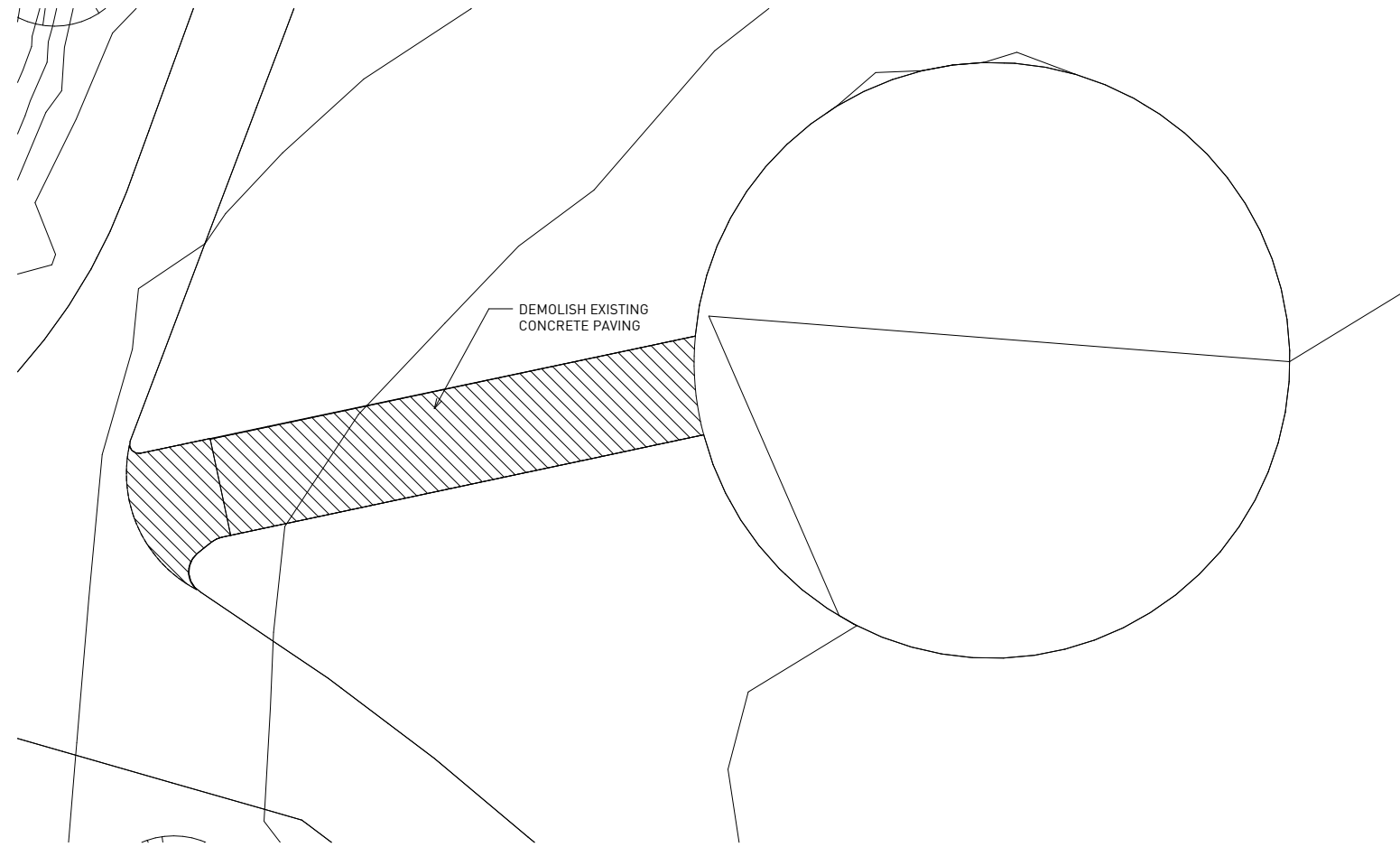
PROPOSAL

8 FEBRUARY 2018





2 Site - Old Location Demo  
1/8" = 1'-0"



1 Site - Proposed Location Demo  
1/8" = 1'-0"

REVISIONS

BROWN'S ISLAND SCULPTURE  
2000 TEMPLATE AVE  
RICHMOND VA 23224

PROPOSAL

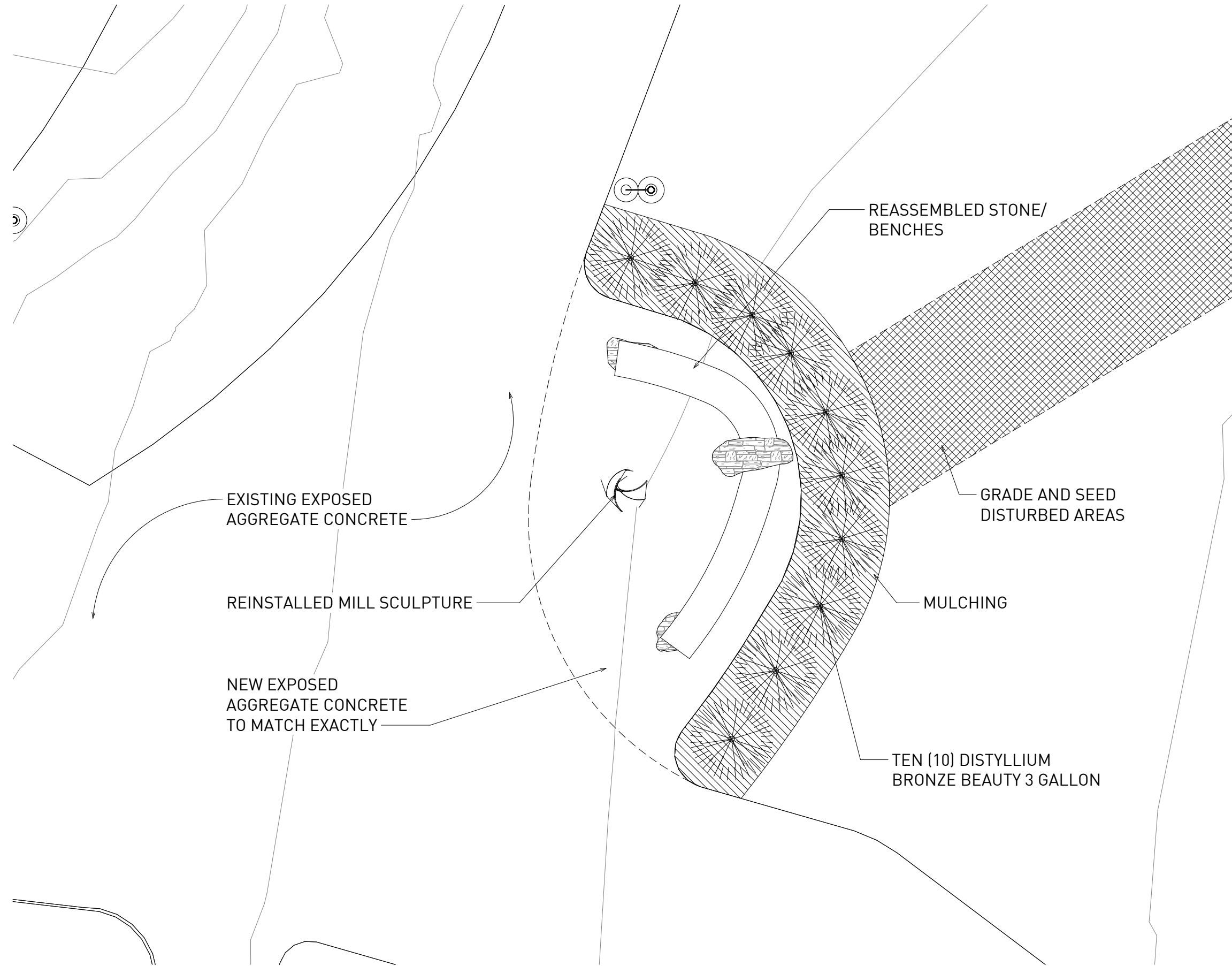
8 FEBRUARY 2018

A102  
DEMO PLANS



©2017

www.3north.com  
804 232 8900



1 Site - Proposed Location New  
3/8" = 1'-0"

REVISIONS

**BROWN'S ISLAND SCULPTURE**  
2000 TEMPLATE AVE  
RICHMOND VA 23224

PROPOSAL

8 FEBRUARY 2018

**A103**  
PROPOSED PLANS



©2017

www.3north.com  
804.232.8900