

# RECONCILIATION PLAZA RESTORATION

# PROJECT OVERVIEW

18 SEPTEMBER 2025 | UDC FINAL REVIEW

BASKERVILL | WATERSTREET STUDIO



## PROJECT NARRATIVE

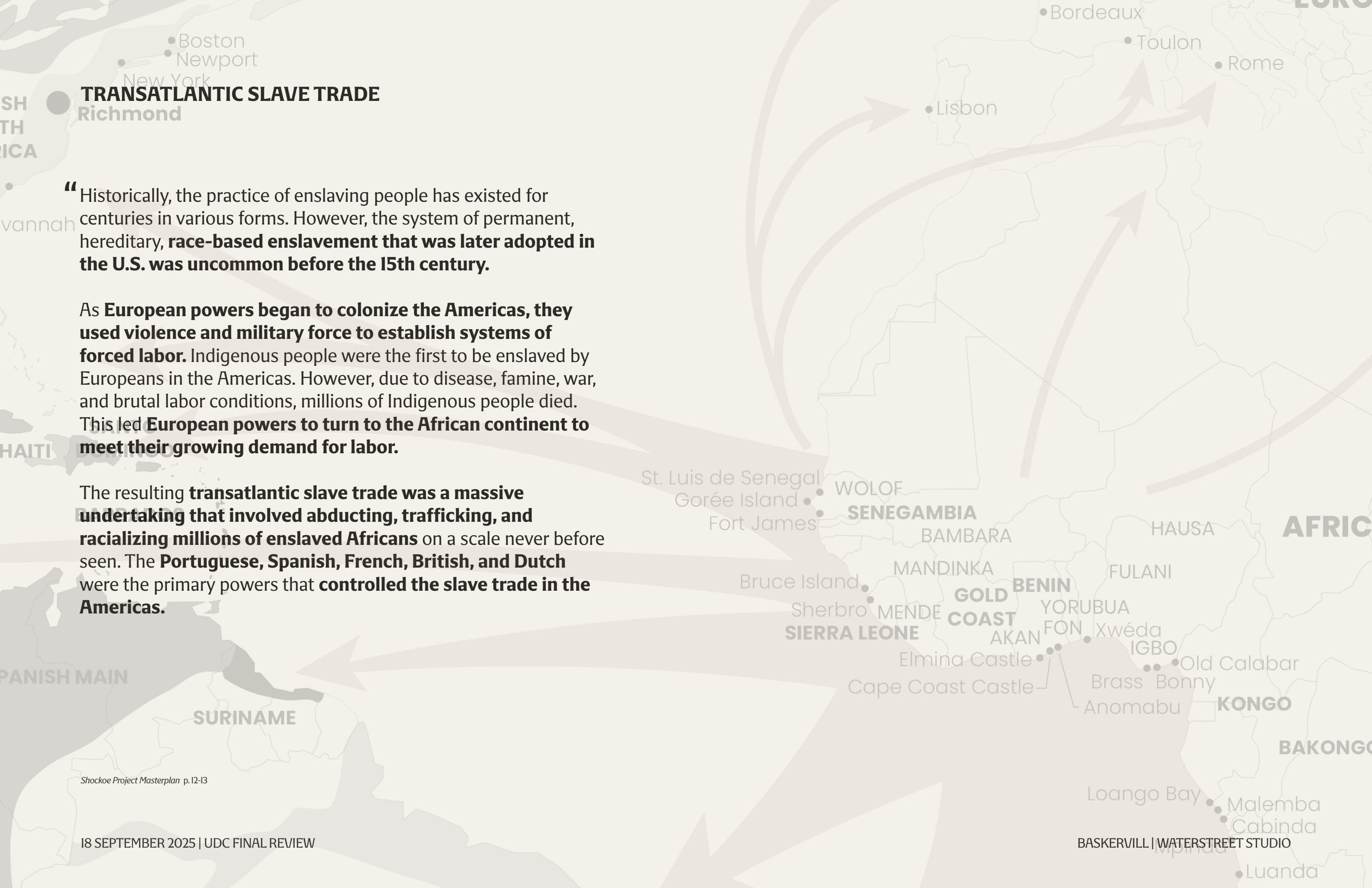
### Project Purpose:

The City of Richmond is renovating The Reconciliation Plaza at the corner of 15th and Main Street, originally constructed in 1988 as one of three locations across the globe (Richmond, VA - Liverpool, England – Cotonou, Benin) that recognized their respective roles in the Trans-Atlantic slave trade. The site has always been envisioned as a gateway into Shockoe Bottom and as an emotional anchor point along the Richmond Slave Trail. The site contains an approx. 12ft sculpture by Richard Broadbent, a water feature with interpretive content, bench seating, plantings and a paving surface bounded by a concrete walk. **The objective of the project is to renovate and update the plaza.**

### Funding:

The project is supported by allocated funding from the City of Richmond and Commonwealth of Virginia. The amount **budgeted for design is \$109,000 and \$2,000,000 for construction.**





## TRANSATLANTIC SLAVE TRADE

“Historically, the practice of enslaving people has existed for centuries in various forms. However, the system of permanent, hereditary, **race-based enslavement that was later adopted in the U.S. was uncommon before the 15th century.**

As **European powers began to colonize the Americas, they used violence and military force to establish systems of forced labor.** Indigenous people were the first to be enslaved by Europeans in the Americas. However, due to disease, famine, war, and brutal labor conditions, millions of Indigenous people died. This led **European powers to turn to the African continent to meet their growing demand for labor.**

The resulting **transatlantic slave trade was a massive undertaking that involved abducting, trafficking, and racializing millions of enslaved Africans** on a scale never before seen. The **Portuguese, Spanish, French, British, and Dutch** were the primary powers that **controlled the slave trade in the Americas.**

St. Luis de Senegal  
Gorée Island  
Fort James  
WOLOF  
SENEGAMBIA  
BAMBARA  
MANDINKA  
GOLD COAST  
SIERRA LEONE  
Bruce Island  
Sherbro  
MENDE  
YORUBUA  
FON  
Xwéda  
IGBO  
Old Calabar  
Brass  
Bonny  
Anomabu  
KONGO  
BAKONGO  
Loango Bay  
Malemba  
Cabinda  
Luanda



RECENT SITE PHOTOS







# ARCHITECTURAL DESIGN

18 SEPTEMBER 2025 | UDC FINAL REVIEW

BASKERVILL | WATERSTREET STUDIO

# Site Plan

Showing Summer Season

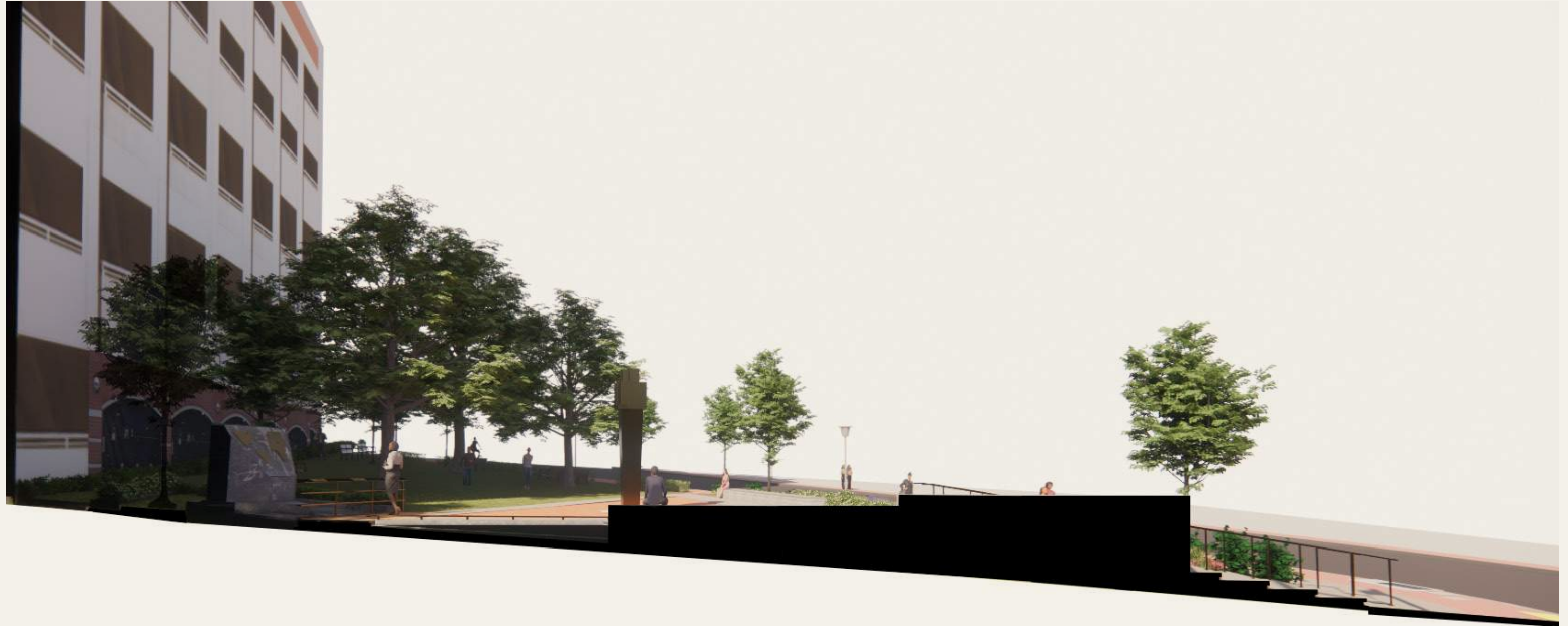


- LEGEND**
- ① NEW FOUNTAIN
  - ② WATER POOL
  - ③ WATER RILL
  - ④ NEW WALK
  - ⑤ SCREENING SHRUBS
  - ⑥ BANDED PLANTING
  - ⑦ NEW BENCHES
  - ⑧ WOODEN “BRIDGE”
  - ⑨ RECONCILIATION STATUE
  - ⑩ IRRIGATION CONTROLS
  - ⑪ SECTION VIEW PG.. 8
  - ⑫ FOUNTAIN VIEW PG. II
  - ⑬ INTERSECTION VIEW PG. I2
  - ⑭ STREET VIEW PG. I3



# Section

View through Wall, Rill, & Fountain





# Elevations

## Fountain & Water Rill





# Material Selections



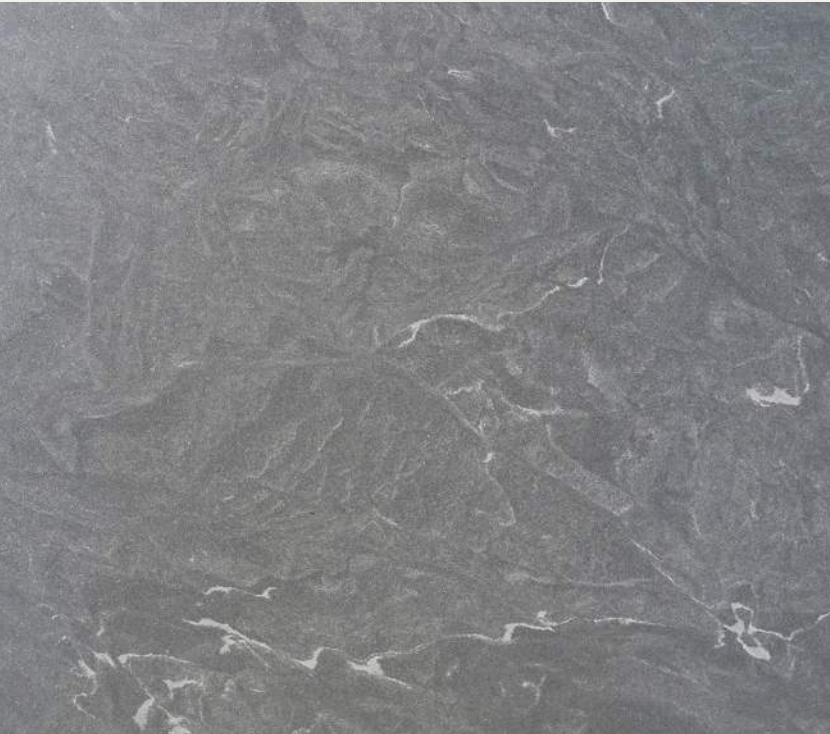
**BRICK**

Existing



**WOOD**

Bridge Deck | Locust Timber Plank



**GRANITE**

Fountain & Water Rill | Virginia Mist Granite



**BRONZE**

Map & Railing | Bronze Railing



# Fountain

Visitor's View





# Water Rill & Wall

View from E. Main St.





# Street View

View from N. 15th St.





# Aerial View





# Landscape Design

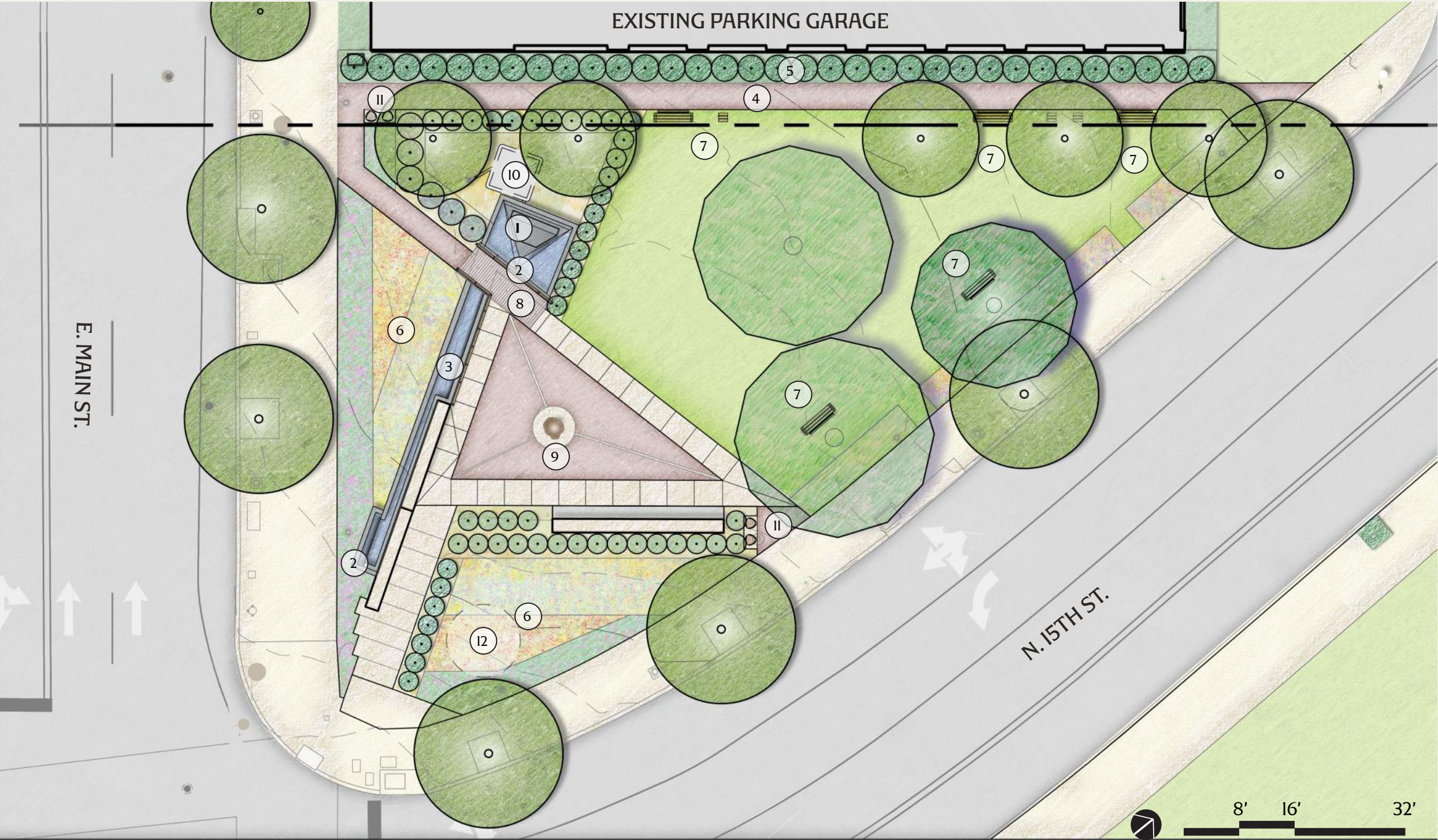
18 SEPTEMBER 2025 | UDC FINAL REVIEW

BASKERVILL | WATERSTREET STUDIO



# Site Plan

Proposed Improvements



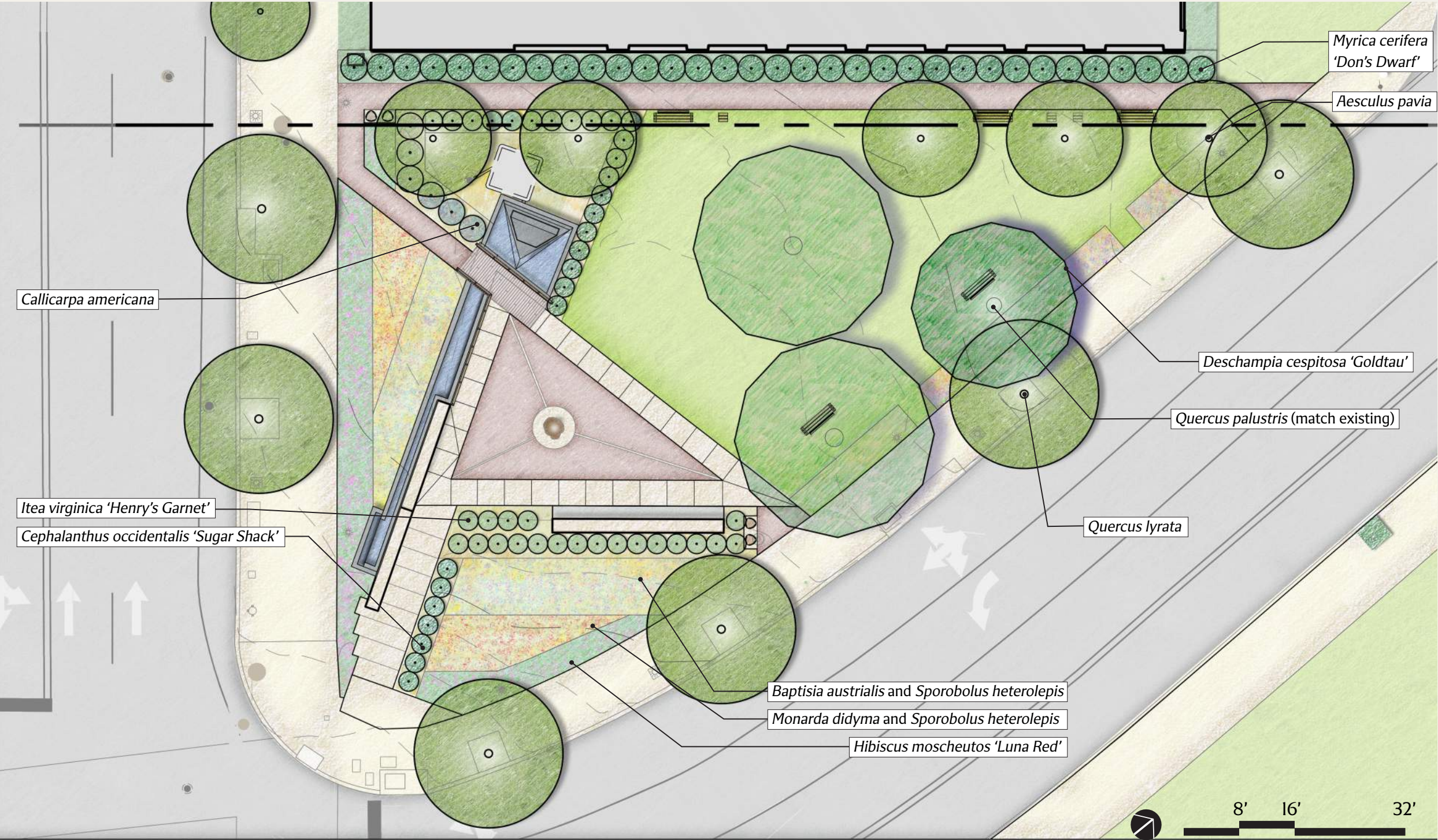
**LEGEND**

- ① NEW FOUNTAIN
- ② WATER POOL
- ③ WATER RILL
- ④ NEW WALK
- ⑤ SCREENING SHRUBS
- ⑥ BANDED PLANTING
- ⑦ NEW BENCHES
- ⑧ WOODEN "BRIDGE"
- ⑨ RECONCILIATION STATUE
- ⑩ IRRIGATION CONTROLS
- ⑪ TRASH & RECYCLING RECEPTACLES
- ⑫ REMOVED TREE



# Planting Plan

## Proposed Improvements



## PLANT SCHEDULE

### TREES

- (5) *Aesculus pavia*  
8' Ht., B&B
- (4) *Quercus lyrata*  
2 1/2" Caliper, B&B
- (1) *Quercus palustris*  
2 1/2" Caliper, B&B

### SHRUBS - 3 Gallon Pots

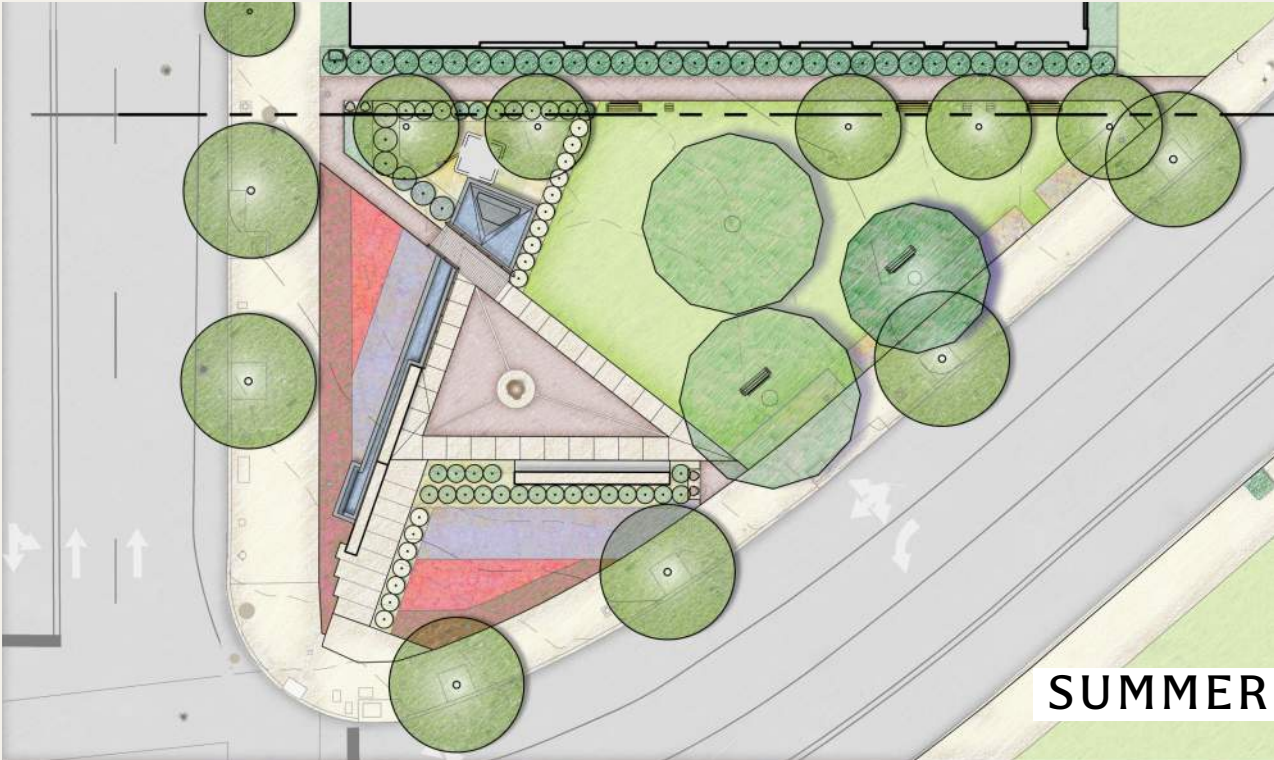
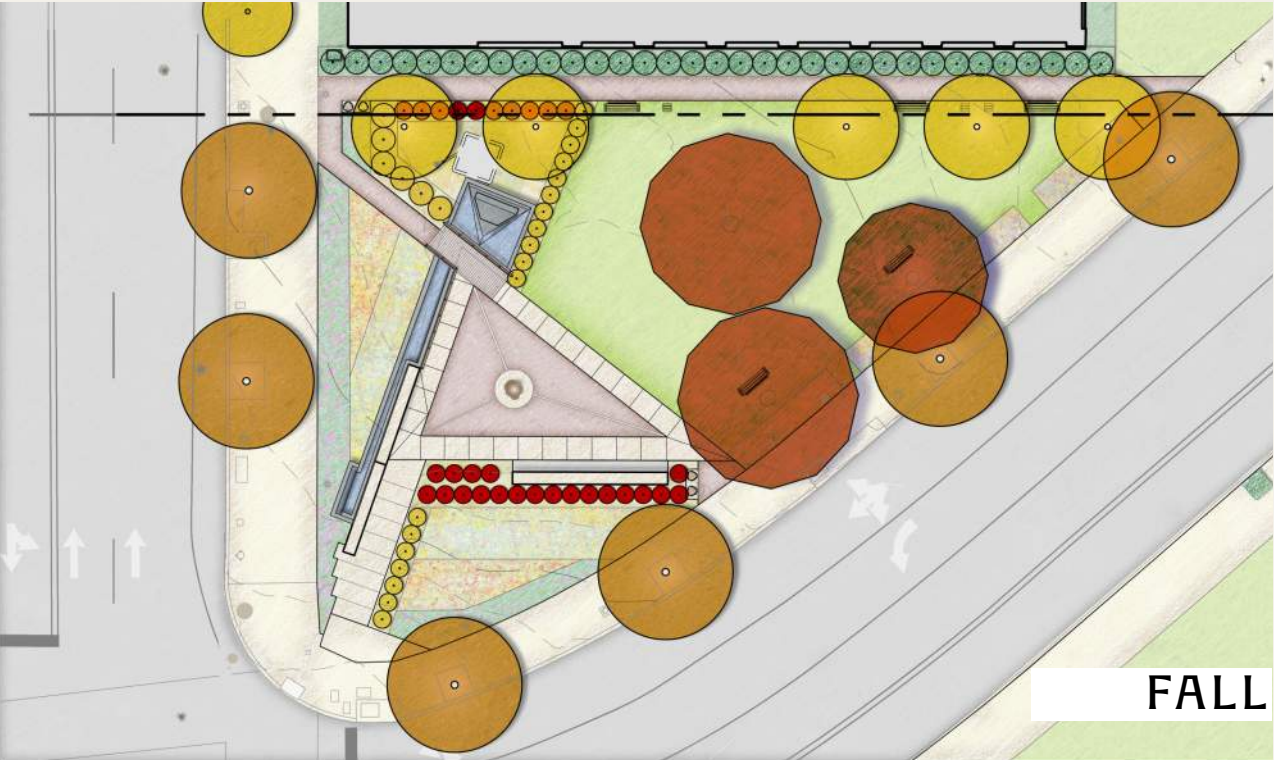
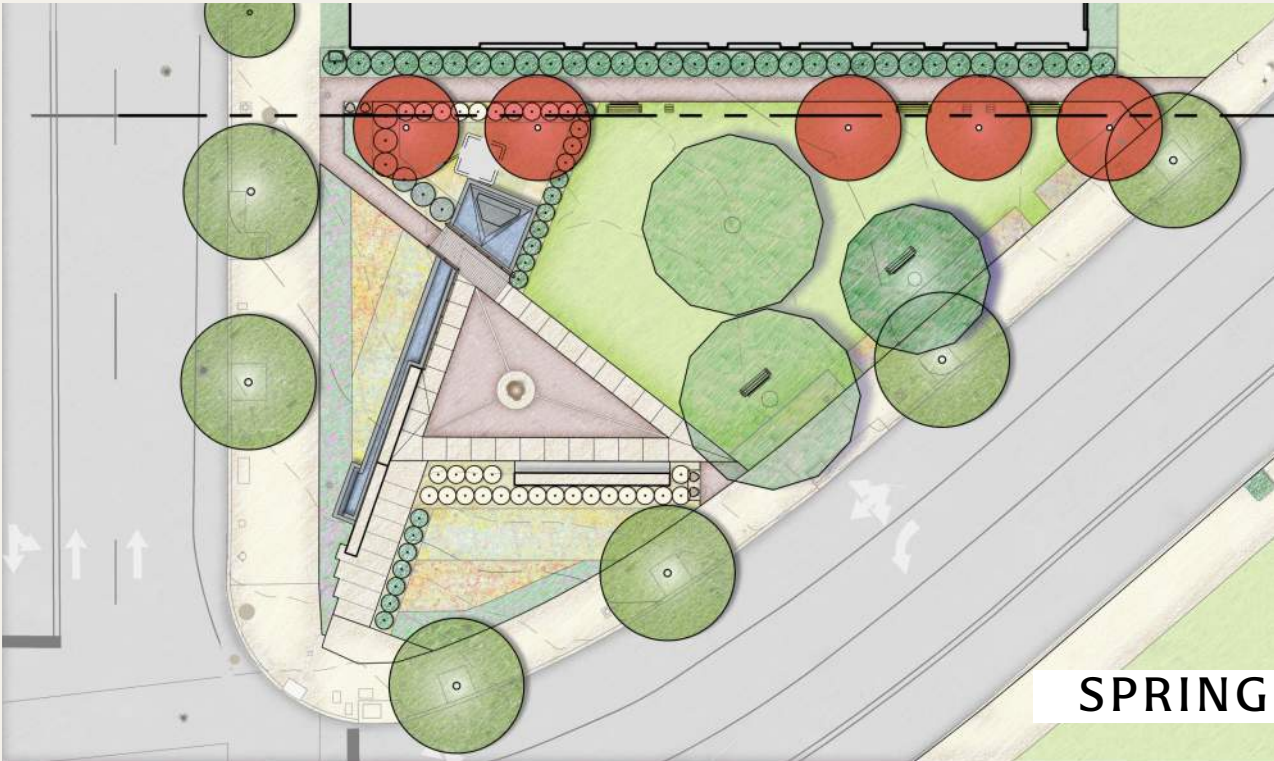
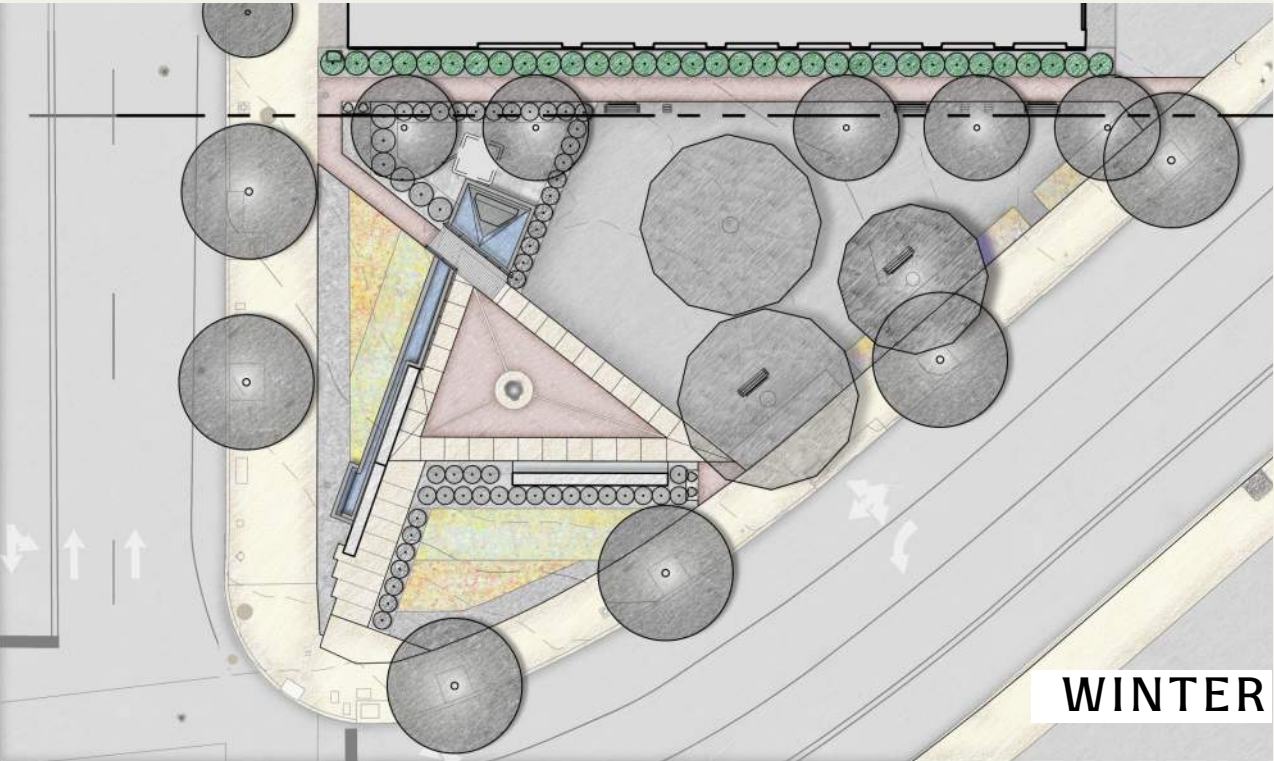
- (6) *Callicarpa americana*
- (18) *Cephalanthus occidentalis*  
'Sugar Shack'
- (30) *Itea virginica* 'Henry's Garnet'
- (34) *Myrica cerifera* 'Don's Dwarf'

### GROUNDCOVER - 3 Quart Pots

- (68) *Baptisia australis*  
1 gallon pot
- (161) *Deschampsia cespitosa* 'Goldtau'  
3-quart pot
- (137) *Hibiscus moscheutos* 'Luna Red'  
1 gallon pot
- (130) *Monarda didyma*  
1 gallon pot
- (200) *Sporobolus heterolepis*  
3-quart pot



# Planting Seasonality





TREES



SHADE TREE

*Quercus palustris*\*  
Pin Oak, 50-70' tall, match existing species



FLOWERING TREE

*Aesculus pavia*  
Red Buckeye, blooms April-May, 10-20' tall



SHRUBS



*Callicarpa americana*\*  
American Beautyberry, 3-5' tall



*Cephalanthus occidentalis* 'Sugar Shack'  
Buttonbush, blooms June-August, 3-4' tall



*Itea virginica* 'Henry's Garnet'  
Virginia Sweetspire, blooms May-July, 3-4' tall



GROUNDCOVER



*Baptisia australis*\*  
False Indigo, blooms May-June, 3-4' tall



*Hibiscus moscheutos* 'Luna Red' \*  
Swamp Rosemallow, blooms July-Sept, 2-3' tall



*Monarda didyma*\*  
Scarlet Beebalm, blooms June-August, 2-4' tall



## ATLANTIC SLAVE TRADE SPECIES\*

### *Baptisia australis*

Indicative of true indigo, the Atlantic slave trade's most coveted plant. False indigo was occasionally used as a substitute for blue dye in colonial America.

### *Hibiscus moscheutos*

Related to *Hibiscus sabdariffa*, which enslaved people brought from African and grew in their provisional gardens. Hibiscus tea for Juneteenth.

### *Quercus palustris*

Symbolic of the oak wood used to construct slave ships.

### *Monarda didyma*

Recorded as both a medicinal and ornamental plant in free and enslaved African American gardens. Red blooms in June for Juneteenth.

### *Callicarpa americana*

Enslaved people would crush the leaves of this shrub and use them as mosquito repellent.



*Sporobolus heterolepis*  
Prairie Dropseed, 2-3' tall



Drought Tolerant



Flood Tolerant



pH Tolerant  
(e.g. road salts)





*Quercus lyrata*  
Overcup Oak, 40-60' tall



*Myrica cerifera* 'Don's Dwarf'  
Dwarf Southern Wax Myrtle, 3-5' tall






*Deschampsia cespitosa* 'Goldtau'  
Tufted Hair Grass, 2' tall



## PERIMETER SPECIES

Hardy plants located at the site's edges that provide shade and screening from the adjacent roads and parking garage.

-  Drought Tolerant
-  Flood Tolerant
-  pH Tolerant  
(e.g. road salts)





## BENCHES

Vestre | Kong Bench & Kong Cube

**Materials:**  
Oak or Ash wood seats  
Hot-dip galvanized steel frame,  
paint optional

**Size:**  
Bench: 70.9" long, 15.7" wide  
Cube: 16.5" long, 15.5" wide

**Features:**  
Backrests, armrests  
Surface-mounted







Landscape Forms | Generation 50

**Materials:** Powder-coated steel, wood panel sides

**Size:** 41” tall, 23.25” diameter

**Features:** Wood panel detail, lid, surface-mounted



Vestre | City

**Materials:** Powder-coated steel

**Size:** 29.5” tall, 16.9” diameter

**Features:** Lid, surface-mounted, color could match Vestre benches

**TRASH &  
RECYCLING  
RECEPTACLES**  
*\*Two options shown*



# Lighting Plan

Proposed Improvements





# Lighting Plan

## Fixture Selection



Alphabet | Theta Series 750 Snap Puck  
**Finish:** Anodized black  
**Size:** .63” tall, .59” diameter  
**Features:** Inserts into hollow railings, vandalism resistant



Alphabet | Theta Mega Puck Spot  
**Materials:** Anodized black  
**Size:** 1 1/4” tall, 1 3/16” diameter  
**Features:** Vandalism resistant



ERCO | Tesis New In-ground luminaire  
**Finish:** Stainless Steel  
**Size:** 8 11/16” tall, 11 5/16” diameter  
**Features:** In ground directional  
**Lumens:** 1422 lm



Ligman | Lightwave Bollard  
**Finish:** Black Ral 9011  
**Size:** 34.2” tall, 6.1” diameter  
**Features:** Vandalism resistant, Water-proof  
**Lumens:** 475 lm



Auroralight | STW612106 Lumistep  
**Finish:** Extra Dark BLPX  
**Size:** 2 1/4” tall, 1 1/8” width 6” length  
**Features:** vandalism resistant  
**Lumens:** Up to 110lm



Jupiter In-ground Custom Mount 15 DEG  
**Finish:** Painted Finish TBD  
**Size:** 8.19” tall, 7.79” width  
**Features:** vandalism resistant



# Fountain Lighting

## Proposed Improvements

