

INTRODUCED: June 11, 2018

AN ORDINANCE No. 2018-181

To amend and reordain City Code § 30-930.5 to modify the White House of the Confederacy Old and Historic District (1201 East Clay Street).

Patron – Mayor Stoney (By Request)

Approved as to form and legality
by the City Attorney

PUBLIC HEARING: JULY 23 2018 AT 6 P.M.

THE CITY OF RICHMOND HEREBY ORDAINS:

§ 1. That section 30-930.5 of the Code of the City of Richmond (2015) be and is hereby amended and reordained as follows:

Sec. 30-930.5. Establishment of particular old and historic districts.

The provisions of this division shall be applicable within the following districts, which are hereby established and designated as old and historic districts:

- (1) *The Barret House Old and Historic District (15 South Fifth Street).*

The boundaries of such district are as follows: beginning at the intersection of the east line of South Fifth Street and the north line of East Cary Street; thence in a northerly direction along the east line of South Fifth Street 82.5 feet more or less to a point; thence in a easterly

AYES: 9 NOES: 0 ABSTAIN: _____

ADOPTED: JULY 23 2018 REJECTED: _____ STRICKEN: _____

direction along a line parallel with the north line of East Cary Street 130 feet more or less to the west line of a north-south alley between South Fifth Street and South Sixth Street; thence in a southerly direction 82.5 feet more or less along said line to the north line of East Cary Street; thence in a westerly direction 130 feet more or less along the north line of East Cary Street to the point of beginning.

(2) *Belgian Building Old and Historic District (Lombardy Street and Brook Road).*

The boundaries of such district are as follows: beginning at the intersection of the northwest line of North Lombardy Street and the west line of Brook Road; thence in a southwesterly direction along North Lombardy Street 550 feet to a point; thence in a northwesterly direction along a line 400 feet more or less to a point; thence in a northeasterly direction along a line parallel to North Lombardy Street 750 feet to the south line of West Graham Road; thence in an easterly direction along the south line of West Graham Road to its intersection with the west line of Brook Road; thence in a southerly direction along the west line of Brook Road to the point of beginning.

(3) *Bolling Haxall House Old and Historic District (211 East Franklin Street).*

The boundaries of such district are as follows: beginning on the south line of East Franklin Street at a point 52.5 feet more or less west of the west line of North Third Street; thence extending in a westerly direction along the south line of East Franklin Street 76.75 feet more or less to the western property line of parcel W000-0047-006 (as assigned by the assessor of the city, as of February 24, 1975, for tax purposes); thence in a southerly direction along said property line 207.67 feet more or less to the north line of an alley; thence in an easterly direction along said line 59.25 feet more or less to the eastern property line of parcel W000-0047-006; thence in a northerly direction along said property line as it meanders to the point of beginning.

(4) *Boulevard Old and Historic District.*

The boundaries of such district are as follows: beginning at a point on the north line of Idlewood Avenue 145 feet more or less east of its intersection with the east line of South Boulevard (point A as shown on a map of the Boulevard Old and Historic District on file in the City of Richmond Department of Planning and Development Review, which shows the parcels as designated by the assessor of the city, as of May 11, 1992, for tax purposes); thence in a northerly direction 100 feet more or less to point B on the east line of a 14-foot north-south alley; thence in a northerly direction along the east line of said alley to point C; thence across Grayland Avenue to its intersection with the east line of a 15-foot north-south alley (point D) and extending the length of the block 258.28 feet more or less to point E; thence in a northerly direction across Parkwood Avenue to its intersection with the east line of a 15-foot north-south alley (point F) and extending the length of the block 259.95 feet more or less to point G; thence in a northerly direction across West Cary Street to its intersection with the east line of a 15-foot north-south alley (point H) and extending the length of the block 379.90 feet more or less to point I; thence in a northerly direction across West Main Street to its intersection with the east line of a 14.17-foot north-south alley (point J) and extending the length of the block 381.43 feet more or less to point K; thence in a northerly direction across Floyd Avenue to its intersection with the east line of a 14-foot north-south alley (point L) and extending 246.63 feet more or less to point M; thence in a westerly direction along the north line of a 15-foot east-west alley to its terminus 54.24 feet more or less (point N); thence in a northerly direction along a line 135 feet more or less to point O; thence in a northerly direction across Grove Avenue to a point 100 feet more or less east of the intersection of the east line of North Boulevard with the north line of Grove Avenue (point P); thence in a northerly direction along rear property lines 199.5 feet more or less to point Q; thence in an easterly direction 70 feet more or less to the east line of a 20-foot north-south alley (point R); thence in a northerly direction to a point 100 feet more or less south

of the south line of Hanover Avenue (point S); thence in a westerly direction across the 20-foot north-south alley and along the south line of a 19-foot east-west alley-in-common 44 feet more or less to point T; thence in a northerly direction 36 feet more or less to point U; thence in an easterly direction 5 feet more or less to point V; thence in a northerly direction 27 feet more or less to point W; thence in an easterly direction 6 feet more or less to point X; thence in a northerly direction 37 feet more or less along a rear property line to its intersection with the south line of Hanover Avenue (point Y); thence across Hanover Avenue to the west line of a private alley 67.92 feet more or less east of the east line of North Boulevard (point Z); thence in a northerly direction along the west line of said private alley 81.50 feet more or less to point A1; thence in an easterly direction along rear property lines 82.08 feet more or less to a 20-foot north-south alley (point B1); thence in an easterly direction across said alley to its east line (point C1); thence in a northerly direction along said alley extending the length of the block 298 feet more or less to point D1; thence in a northerly direction across Stuart Avenue to a point 85 feet more or less east of the east line of North Boulevard (point E1); thence in a northerly direction 54.50 feet more or less to point F1; thence in an easterly direction 85 feet more or less to the east line of a 20-foot north-south alley (point G1); thence in a northerly direction along said alley extending the length of the block 324.98 feet more or less to point H1; thence in a northerly direction across Kensington Avenue to its intersection with the east line of a 20-foot north-south alley (point I1) and extending the length of the block 375.07 feet more or less to point J1; thence in a northerly direction across Park Avenue to point K1; thence in a westerly direction along the north line of Park Avenue to its intersection with the east line of North Boulevard (point L1); thence in a northerly direction extending the length of the block 294.03 feet more or less to point M1; thence in a northerly direction across Monument Avenue to point N1; thence continuing in a northerly direction along the east line of North Boulevard 149 feet more or less to point O1;

thence in an easterly direction along the south line of a 15.58 foot east-west alley 88.97 feet more or less to point P1; thence in a northerly direction across said alley to its intersection with the west line of a 10-foot north-south private alley (point Q1); thence in a northerly direction 57.5 feet more or less along the west line of said private alley to point R1; thence in a westerly direction 10 feet more or less along the south line of said alley to point S1; thence in a northerly direction along a property line 72.5 feet more or less to point T1; thence in a northerly direction across West Grace Street to point U1, said point being 71.67 feet more or less east of the east line of North Boulevard; thence in a northerly direction along rear property lines 145 feet more or less to the south line of a 20.72-foot east-west alley (point V1); thence in a northerly direction across said alley to point W1; thence in a westerly direction along the north line of said alley to its intersection with the east line of North Boulevard (point X1); thence in a westerly direction across North Boulevard to a point 121.83 feet more or less south of the south line of West Broad Street (point Y1); thence in a westerly direction 165.33 feet more or less along a property line extended to the west line of a 15.33-foot north-south alley (point Z1); thence in a southerly direction along said alley to a point 90 feet more or less north of the north line of West Grace Street (point A2); thence in an easterly direction across the alley 65.33 feet more or less to the east line of a north-south private alley (point B2); thence in a southerly direction along a property line to its intersection with the north line of West Grace Street (point C2); thence in a southerly direction across West Grace Street to the west line of an 11-foot north-south alley (point D2); thence in a southerly direction along the west line of said alley to its intersection with a 15.40-foot east-west alley (point E2); thence across said alley to point F2; thence in a southerly direction 45.31 feet more or less along a rear property line to point G2; thence in an easterly direction along a south property line to its intersection with the west line of North Boulevard (point H2); thence in a southerly direction 87 feet more or less along the west line of North

Boulevard to its intersection with the north line of Monument Avenue (point I2); thence in a southerly direction across Monument Avenue to point J2; thence in a westerly direction along the south line of Monument Avenue to the west line of a 15.33-foot north-south alley (point K2); thence in a southerly direction along the west line of said alley to a point 75 feet more or less north of said alley's intersection with the north line of Park Avenue (point L2); thence in an easterly direction across said alley to point M2 and along a rear property line to the east line of a private north-south alley (point N2); thence in a southerly direction along said alley to its intersection with the north line of Park Avenue (point O2); thence in a westerly direction along the north line of Park Avenue to its intersection with the west line of North Colonial Avenue (point P2); thence in a southerly direction along the west line of North Colonial Avenue to its intersection with the south line of Patterson Avenue (point Q2); thence in an easterly direction along the south line of Patterson Avenue to the west line of a 15-foot north-south alley (point R2); thence in a southerly direction along the west line of said alley extending the length of the block, 379.5 feet more or less to point S2; thence in a westerly direction along the north line of Kensington Avenue to its intersection with the west line of North Sheppard Street (point T2); thence in a southerly direction along the west line of North Sheppard Street to its intersection with the south line of Grove Avenue (point U2); thence in an easterly direction along the south line of Grove Avenue to a point 106.50 feet more or less west of the west line of North Boulevard (point V2); thence in a southerly direction 160.02 feet more or less to point W2; thence in a westerly direction 38.60 feet more or less to the east line of a 40-foot north-south alley (point X2); thence in a westerly direction across said alley to point Y2; thence in a southerly direction along the west line of said alley to its intersection with the south line of a 14.94-foot east-west alley (point Z2); thence in an easterly direction along the south line of said alley to its intersection with the west line of a 15-foot north-south alley (point A3); thence in a

southerly direction along the west line of said 15-foot alley to its intersection with the north line of Floyd Avenue (point B3); thence in a southerly direction across Floyd Avenue to point C3; thence in an easterly direction along the south line of Floyd Avenue to a point 110 feet more or less west of the west line of North Boulevard (point D3); thence in a southerly direction 60 feet more or less to point E3; thence in a westerly direction 40 feet more or less across rear property lines to its intersection with the east line of a 15-foot north-south alley (point F3); thence in a westerly direction across said alley to point G3; thence in a southerly direction along the west line of said 15-foot alley extended to the next 15-foot north-south alley in the same block and to its intersection with the north line of Ellwood Avenue (point H3); thence in a southerly direction across Ellwood Avenue to point I3; thence in a southerly direction along the west line of a 15-foot north-south alley to point J3; thence in a southerly direction to point K3; thence in a southerly direction along the west line of a 20.04-foot north-south alley to a point 66.67 feet more or less north of the north line of West Cary Street (point L3); thence in an easterly direction across said alley to point M3; thence in an easterly direction 42 feet more or less along a rear property line to point N3; thence in a southerly direction 66.67 feet more or less to its intersection with the north line of West Cary Street (point O3); thence in a southerly direction across West Cary Street to its intersection with the west line of a 15-foot north-south alley (point P3); thence in a southerly direction along the west line of said alley and extending the length of the block 873.98 feet more or less to its intersection with the north line of Idlewood Avenue (point Q3); thence in an easterly direction along the north line of Idlewood Avenue 372.37 feet more or less to point A, the point of beginning.

(5) *Broad Street Old and Historic District.*

The boundaries of such district are as follows: beginning at the intersection of the west line of North First Street and the south line of East Broad Street, thence in a southerly direction

along the west line of North First Street to the south line of the easternmost east-west alley that extends from North First Street between East Broad Street and East Grace Street; thence in a westerly direction along said line extended and the south line of the east-west alley that extends from North Foushee Street as it meanders to the east line of North Foushee Street; thence in a westerly direction along said line to the east line of North Belvidere Street; thence in a northerly direction along the east line of North Belvidere Street to the north line of an east-west alley extended between West/East Marshall Street and West/East Broad Street; thence in an easterly direction along said extended line to the west line of North First Street; thence in a southerly direction along the west line of North First Street to the point of beginning.

(6) *Centenary United Methodist Church Old and Historic District (409 East Grace Street).*

The boundaries of such district are as follows: beginning at a point on the south line of East Grace Street, said point being 52.21 feet more or less west of the west line of North Fifth Street; thence in a southerly direction along a line 121.5 feet more or less to the north line of an east-west alley between East Grace Street and East Franklin Street; thence in a westerly direction along said line 78 feet more or less to the west line of a north-south alley between North Fifth Street and North Fourth Street; thence 40.58 feet more or less in a southerly direction along said line to a point on the south property line of parcel W000-024-004 (as assigned by the assessor of the city, as of February 24, 1975, for tax purposes); thence 44.67 feet more or less in a westerly direction along said property line to a point on the west property line of said parcel; thence in a northerly direction along said property line 162.08 feet more or less to the south line of East Grace Street; thence 121.67 feet more or less in an easterly direction along the south line of East Grace Street to the point of beginning.

(7) *Chimborazo Park Old and Historic District.*

The boundaries of such district are as follows: beginning at the point of intersection of

the west line of North Thirty-Second Street and the south line of East Marshall Street; thence in a southerly direction along the west line of North Thirty-Second Street to the north line of East Grace Street; thence in a southerly direction along the western edge of the westernmost roadway in Chimborazo Park 400 feet more or less to a point; thence in a southwesterly direction 150 feet more or less to a point 100 feet above sea level, said point also being on a line 700 feet more or less from the park roadway to the intersection of the south line of Libby Terrace and the west line of North Thirty-First Street; thence along the 100-foot contour line as it meanders to the intersection of said 100-foot contour line and the north line of Government Road; thence along the north line of Government Road to a point, said point being at the east property line extended of parcel E000-1290-016 (as assigned by the assessor of the city, as of March 23, 1987, for tax purposes); thence in a northerly direction along said line projected and along the west property line of parcel E000-1288-008 (as assigned by the assessor of the city, as of March 23, 1987, for tax purposes); thence in a northerly direction along said property line and the east property lines of the following parcels: E000-1288-010, E000-1288-011 and E000-1288-006 (as assigned by the assessor of the city, as of March 23, 1987, for tax purposes) to the south line of East Marshall Street, said point being 296 feet more or less east of the east line of North Thirty-Sixth Street; thence in a westerly direction along the south line of East Marshall Street to the west line of North Thirty-Fifth Street; thence in a northerly direction along the west line of North Thirty-Fifth Street to the south line of the southernmost east-west alley between East Marshall Street and East Clay Street; thence in a westerly direction along said line to the east line of Chimborazo Boulevard; thence in a southerly direction along the east line of Chimborazo Boulevard 39 feet more or less to the north property line extended of parcel E000-0884-014 (as assigned by the assessor of the city, as of March 23, 1987, for tax purposes); thence in a westerly direction along said property line extended, said line being 120 feet more or less from the north line of East

Marshall Street and continuing along the south line of an east-west alley between East Marshall Street and East Clay Street to the east line of North Thirty-Third Street; thence in a southerly direction along the east line of North Thirty-Third Street to the south line of East Marshall Street; thence in a westerly direction along the south line of East Marshall Street to the point of beginning.

(8) *Church Hill North Old and Historic District.*

The boundaries of such district are as follows: Beginning at the point of intersection of the east right-of-way line of N. 21st Street and the south right-of-way line of the southernmost east-west alley between E. Marshall Street and E. Broad Street; thence in a northerly direction along said west right-of-way line to the southeast right-of-way line of Jefferson Avenue; thence in a northeasterly direction along said right-of-way line four blocks to the east right-of-way line of N. 25th Street; thence in a northerly direction along said right-of-way line to the south right-of-way line of Cedar Street; thence in an easterly direction along said right-of-way line two and one half blocks to the east right-of-way line of the north-south alley between N. 27th Street and N. 29th Street; thence in a northerly direction along said right-of-way line to the south right-of-way line of O Street; thence in an easterly direction along said right-of-way line to the west right-of-way line of N. 29th Street; thence in a southerly direction along said right-of-way line to the south right-of-way line of N Street; thence in an easterly direction along said right-of-way line to the west right-of-way line of N. 30th Street; thence in a southerly direction along said right-of-way line to the north right-of-way line of M Street; thence in a westerly direction along said right-of-way line to the east property line extended of parcel E000-0573/001 (as assigned by the Assessor of the City, as of April 4, 2007, for tax purposes); thence in a southerly direction along said east property line to the south property line of said parcel; thence in a westerly direction along said south property line to the east property line of parcel E000-0573/045 (as assigned by

the Assessor of the City, as of April 4, 2007, for tax purposes); thence in a southerly direction along said east property line and a series of east property lines extended to the north property line of parcel E000-0573/030 (as assigned by the Assessor of the City, as of April 4, 2007, for tax purposes); thence in an easterly direction along said north property line to the east property line of said parcel; thence in a southerly direction along said east property line extended to the south right-of-way line of E. Leigh Street; thence in a westerly direction along said right-of-way line to the west right-of-way line of a north-south alley between N. 29th Street and N. 30th Street; thence in a southerly direction along said right-of-way line extended to the north right-of-way line of E. Clay Street; thence in a westerly direction along said right-of-way line to the west right-of-way line of N. 29th Street, thence in a southerly direction along said right-of-way line to the south property line extended of parcel E000-0530/013 (as assigned by the Assessor of the City, as of April 4, 2007, for tax purposes); thence in a westerly direction along said south property line extended, crossing the north-south alley between N. 28th Street and N. 29th Street, to the south property line of parcel E000-0530/032 (as assigned by the Assessor of the City, as of April 4, 2007, for tax purposes); thence in a westerly direction along said south property line extended, crossing N. 28th Street, to the centerline of the east-west alley between E. Marshall Street and E. Broad Street; thence in a westerly direction along said centerline extended, crossing N. 27th Street, to the south property line of parcel E000-0437/013 (as assigned by the Assessor of the City, as of April 4, 2007, for tax purposes); thence in a westerly direction along said south property line extended to the centerline of another east-west alley between E. Marshall Street and E. Broad Street; thence in a westerly direction along said centerline extended, crossing N. 26th Street and bisecting parcel E000-0385/006 (as assigned by the Assessor of the City, as of April 4, 2007, for tax purposes); thence continuing in a westerly direction along said centerline extended to the west right-of-way line of N. 25th Street; thence in a northerly direction along said west

right-of-way line to the south right-of-way line of E. Marshall Street; thence in a westerly direction along said south right-of-way line to the west right-of-way line of N. 23rd Street; thence in a southerly direction along said west right-of-way line to the north right-of-way line of the east-west alley between E. Marshall Street and E. Broad Street; thence in a westerly direction along said north right-of-way line to the east right-of-way line of N. 22nd Street, thence in a northwesterly direction, crossing N. 22nd Street, to the south right-of-way line of the northernmost east-west alley between E. Marshall Street and E. Broad Street; thence in a westerly direction along said south right-of-way line to the east right-of-way line of the north-south alley between N. 21st Street and N. 22nd Street; thence in a southerly direction along said east right-of-way line to the south right-of-way line of the southernmost east-west alley between E. Marshall Street and E. Broad Street; thence in a westerly direction along said south right-of-way line to the point of beginning. It should be noted that the southern boundary line for the Church Hill North Old and Historic District is contiguous with the northern boundary line for the existing St. John's Church Old and Historic District.

(9) *Crozet House Old and Historic District (100-102 East Main Street).*

The boundaries of such district are as follows: beginning at the intersection of the north line of East Main Street and the east line of North First Street; thence in an easterly direction 59 feet more or less to a point; thence in a northerly direction along a line parallel with the east line of North First Street 151.50 feet more or less to the south line of an east-west alley between East Main Street and East Franklin Street; thence in a westerly direction along said line 59 feet more or less to the east line of North First Street; thence in a southerly direction along the east line of North First Street 151.50 feet more or less to the point of beginning.

(10) *Glasgow House Old and Historic District (1 West Main Street).*

The boundaries of such district are as follows: beginning at the intersection of the south

line of West Main Street and the west line of South Foushee Street; thence extending in a westerly direction along the south line of West Main Street 80 feet more or less to a point; thence in a southerly direction 155.50 feet more or less along a line to the north line of an east-west alley between West Main Street and West Cary Street; thence in an easterly direction 80 feet more or less along said line to the west line of South Foushee Street; thence in a northerly direction 155.50 feet more or less along the west line of South Foushee Street to the point of beginning.

(11) *Hancock-Wirt-Caskie House Old and Historic District (2 North Fifth Street).*

The boundaries of such district are as follows: beginning at the intersection of the west line of North Fifth Street and the north line of East Main Street; thence in a northerly direction along the west line of North Fifth Street 83.33 feet more or less to a point; thence in a westerly direction along a line 60.90 feet more or less to a point on the east property line extended of parcel W000-0023-013 (as assigned by the assessor of the city, as of February 24, 1975, for tax purposes); thence in a southerly direction approximately 83.33 feet more or less along a line to the north line of East Main Street; thence in an easterly direction along the north line of East Main Street 60.90 feet more or less to the point of beginning.

(12) *Henry Coalter Cabell House Old and Historic District (116 South Third Street).*

The boundaries of such district are as follows: beginning at the intersection of the west line of South Third Street and the north line of East Canal Street; thence in a northerly direction along the west line of North Third Street 107.33 feet more or less to a point; thence in a westerly direction along a line to a point on the east line of a north-south alley between North Second Street and North Third Street, said point being 107.33 feet more or less north of the north line of East Canal Street; thence in a southerly direction along said line to the north line of East Canal Street; thence in an easterly direction along the north line of East Canal Street to the point of

beginning.

(13) *Hermitage Road Old and Historic District.*

The boundaries of such district are as follows: beginning at the point of intersection of the west line of Hermitage Road extended and the south line of Laburnum Avenue extended; thence in a northerly direction along the west line of Hermitage Road extended to the north line of Laburnum Avenue extended; thence in a westerly direction along the north line of Laburnum Avenue extended to the east line of Hill Monument Parkway extended; thence in a northerly direction along the east line of Hill Monument Parkway extended to the south line of Hill Monument Parkway extended; thence in a northerly direction across Hill Monument Parkway to the north line of Hill Monument Parkway; thence in a westerly direction along the north line of Hill Monument Parkway to a point at the west property line of parcel N017-0473-006 (as assigned by the assessor of the city, as of November 14, 1988, for tax purposes); said point being 140.54 feet more or less west of the west line extended of Hermitage Road; thence in a northerly direction along said property line and parcels N017-0473-005 and N017-0473-001 (as assigned by the assessor of the city, as of November 14, 1988, for tax purposes), a combined distance of 635.28 feet more or less to the east line of a 25-foot north-south alley west of Hermitage Road, said alley being the easternmost alley west of Hermitage Road; thence in a northerly direction along said line to the terminus of the alley and the western property line of parcel N017-0228-007 (as assigned by the assessor of the city, as of November 14, 1988, for tax purposes), said terminus being 804.50 feet more or less north of the north line of Bellevue Avenue; thence in a northerly direction along said property line a distance of 410.59 feet more or less to the right-of-way line of Interstate Highway 95; thence in a northeasterly and in an easterly direction continuing along said right-of-way line a total distance of 385.85 feet more or less to the west line of Hermitage Road; thence in a northerly direction along the west line of Hermitage Road to

the south line extended of Westbrook Avenue; thence in an easterly direction along the south line extended of Westbrook Avenue to a point at the northeast property line of parcel N017-0178-010 (as assigned by the assessor of the city, as of November 14, 1988, for tax purposes), said point being 150 feet more or less east of the east line of Hermitage Road extended; thence in a southeasterly direction along said property line and the northeast property line of parcel N017-0178-009 (as assigned by the assessor of the city, as of November 14, 1988, for tax purposes), to its intersection with the east property line of parcel N017-0178-009 (as assigned by the assessor of the city, as of November 14, 1988, for tax purposes); thence in a southerly direction along said property line extended 656.50 feet more or less to the north property line extended of parcel N017-0178-002 (as assigned by the assessor of the city, as of November 14, 1988, for tax purposes); thence in a westerly direction along said property line extended 83 feet more or less to the east property line of parcel N017-0178-002 (as assigned by the assessor of the city, as of November 14, 1988, for tax purposes); thence in a southerly direction along said property line and the east property line extended of parcel N017-0178-001 (as assigned by the assessor of the city, as of November 14, 1988, for tax purposes), 200 feet more or less to the south line of Princeton Road, said point being 250 feet more or less east of the east line of Hermitage Road; thence in a southerly direction along said line extended a distance of 300 feet more or less to the east property line of parcel N017-0258-056 (as assigned by the assessor of the city, as of November 14, 1988, for tax purposes), said point being 250 feet more or less east of the east line of Hermitage Road; thence in a westerly direction along said property line 190.85 feet more or less to the northeast property line of parcel N017-0258-030 (as assigned by the assessor of the city, as of November 14, 1988, for tax purposes), said point being 182 feet more or less north of the west line of Pope Avenue; thence in a southeasterly direction along said property line extended to the west line of Pope Avenue; thence in a southeasterly direction across Pope

Avenue, to a point on the east line of Pope Avenue at the northeast property line of parcel N000-2339-001 (as assigned by the assessor of the city, as of November 14, 1988, for tax purposes), said property line being 340 feet more or less northeast of the intersection of the east line of Pope Avenue extended and the north line of Bellevue Avenue extended; thence in a southeasterly direction along said property line to the east property line of parcel N000-2339-001 (as assigned by the assessor of the city, as of November 14, 1988, for tax purposes); thence in a southerly direction along said property line to the north line of Bellevue Avenue; thence in a westerly direction along the north line of Bellevue Avenue to the east property line extended of parcel N000-2176-028 (as assigned by the assessor of the city, as of November 14, 1988, for tax purposes), said property line being 125 feet more or less west of the west line of Chevy Chase Street; thence in a southerly direction along said property line extended 350 feet more or less to the north property line of parcel N000-2176-025 (as assigned by the assessor of the city, as of November 14, 1988, for tax purposes); thence in an easterly direction along said property line 125 feet more or less to the west line of Chevy Chase Street; thence in a southerly direction along the west line of Chevy Chase Street 150.24 feet more or less to the south property line of parcel N000-2176-025 (as assigned by the assessor of the city, as of November 14, 1988, for tax purposes); thence in a westerly direction along said property line 175.18 feet more or less to the west line of an 18-foot north-south alley between Chevy Chase Street and Hermitage Road; thence in a southerly direction along said line extended to the south line of Nottoway Avenue; thence in an easterly direction along the south line of Nottoway Avenue 50.08 feet more or less to the west line of an 18-foot north-south alley east of Hermitage Road; thence in a southerly direction along the west line extended of said alley to the south line of Claremont Avenue; thence in an easterly direction along the south line of Claremont Avenue 101.08 feet more or less to the west line of an 18-foot north-south alley east of Hermitage Road; thence in a southerly

direction along the west line of said alley to the south line of an 18-foot east-west alley between Claremont Avenue and Laburnum Avenue; thence in an easterly direction along said line 162 feet more or less to the west line of Monticello Avenue; thence in a southerly direction along the west line of Monticello Avenue to the north line of Laburnum Avenue; thence along the north line of Laburnum Avenue to the east line of Hermitage Road; thence in a southerly direction along the east line of Hermitage Road to the south line of Laburnum Avenue; thence in a westerly direction along the south line of Laburnum Avenue to the point of beginning.

(14) *Jackson Ward Old and Historic District.*

The boundaries of such district are as follows: beginning at the intersection of the west line of Smith Street and the north line extended of an east-west alley between West Marshall Street and West Broad Street; thence in a northerly direction along the west line of Smith Street to the south line extended of Catherine Street; thence in an easterly direction along the south line extended of Catherine Street to the east line of North Monroe Street; thence in a northerly direction along the east line of North Monroe Street to the northeast line of Brook Road; thence in a northerly direction along the east line of Brook Road to the south line of West Leigh Street; thence in an easterly direction along the south line of West Leigh Street 20 feet more or less to the east property line extended of parcel N000-0210-040 (as assigned by the assessor of the city, as of March 9, 1987, for tax purposes); thence in a northerly direction along said property line extended to the north line of the southernmost east-west alley between West Leigh Street and West Duval Street; thence in an easterly direction along the said line to a point at the terminus of the alley, said point being 110.00 feet more or less east of the east line of Judah Street; thence in a northerly direction along the east property line of parcel N000-0184-034 (as assigned by the assessor of the city, as of March 9, 1987, for tax purposes), 24 feet more or less to the north line extended of an east-west alley between West Leigh Street and West Duval Street; thence in an

easterly direction along said line to the west line of St. Peter Street; thence in a northerly direction along the west line of St. Peter Street to the north line extended of West Jackson Street; thence in an easterly direction along the north line extended of West Jackson Street to the east line of Price Street; thence in a southerly direction along the east line of Price Street to the northeast line of Chamberlayne Parkway; thence in a southerly direction along the northeast line of Chamberlayne Parkway to a point, said point being at the intersection of the north line of West Leigh Street and the west property line of parcel N000-0104-039 (as assigned by the assessor of the city, as of March 9, 1987, for tax purposes); thence in a northerly direction along said property line extended to the north line of Ceto Alley; thence in an easterly direction along the north line of said alley to the west line of St. James Street; thence in a northerly direction along the west line of St. James Street to the north line of West Jackson Street; thence in an easterly direction along the north line of East Jackson Street to the east line extended of a north-south alley between North First Street and North Second Street; thence in a southerly direction along said line to the north line of an east-west alley between East Jackson Street and East Leigh Street; thence in an easterly direction along said line to the west line of North Second Street; thence in a southerly direction along the west line of North Second Street to a point at the north property line of parcel N000-0062-013 (as assigned by the assessor of the city, as of March 9, 1987, for tax purposes), said point being 100 feet more or less south of the south line of East Leigh Street; thence in a westerly direction along said property line to the east line of a north-south alley between North Second Street and North First Street; thence in a southerly direction along said line to the north line of an east-west alley between East Leigh Street and East Clay Street; thence in an easterly direction along said line to a point at the east property line extended of parcel N000-0062-034 (as assigned by the assessor of the city, as of March 9, 1987, for tax purposes), said point being 115 feet more or less west of the west line of North Second Street;

thence in a southerly direction along said property line extended to the south line of East Clay Street; thence in an easterly direction along the south line of East Clay Street to a point at the east property line of parcel N000-0061-010 (as assigned by the assessor of the city, as of March 9, 1987, for tax purposes), said point being 42.50 feet more or less west of the west line of North Second Street; thence in a southerly direction along said property line extended to the south line of the northernmost east-west alley between East Clay Street and East Marshall Street; thence in a westerly direction along said line to the east property line of parcel N000-0061-006 (as assigned by the assessor of the city, as of March 9, 1987, for tax purposes); thence in a southerly direction along said property line extended to the south line of the southernmost east-west alley between East Clay Street and East Marshall Street; thence in a westerly direction along said line extended to a point at the east property line of parcel N000-0077-055 (as assigned by the assessor of the city, as of March 9, 1987, for tax purposes), said point being 75.5 feet more or less east of the east line of North Adams Street; thence southerly along said property line extended to a point on the south line of West Marshall Street, said point being 75.5 feet more or less east of the east line of North Adams Street; thence in a westerly direction along the south line of West Marshall Street to the east line of North Madison Street; thence in a southerly direction along the east line of North Madison Street to the north line of an east-west alley between West Marshall Street and West Broad Street; thence in a westerly direction along said line to the point of beginning.

(15) *Jefferson Hotel Old and Historic District (114 West Main Street).*

The boundaries of such district are as follows: beginning at the point of intersection of the north line of West Main Street and the east line of North Jefferson Street; thence in a northerly direction along the east line of North Jefferson Street to the south line of West Franklin Street; thence in an easterly direction along the south line of West Franklin Street to the west line

of North Adams Street; thence in a southerly direction along the west line of North Adams Street to the north line of West Main Street; thence in a westerly direction along the north line of West Main Street to the point of beginning.

(16) *John Marshall House Old and Historic District (818 East Marshall Street).*

The boundaries of such district are as follows: beginning at the intersection of the north line of East Marshall Street and the west line of North Ninth Street; thence in a westerly direction along the north line of East Marshall Street 130 feet more or less to a point; thence in a northerly direction along a line 161 feet more or less to a point; thence in an easterly direction 130 feet more or less along a line to a point on the west line of North Ninth Street; thence in a southerly direction 161 feet more or less along the west line of North Ninth Street to the point of beginning.

(17) *Leigh Street Baptist Church Old and Historic District (East Leigh and Twenty-Fifth Streets).*

The boundaries of such district are as follows: beginning at the intersection of the east line of North Twenty-Fifth Street and the south line of West Leigh Street; thence in a southerly direction along the east line of North Twenty-Fifth Street 196 feet more or less to a point; thence along a line parallel with the south line of East Leigh Street in an easterly direction 125 feet more or less to the west line of a north-south alley between North Twenty-Fifth Street and North Twenty-Sixth Street; thence in a northerly direction 196 feet more or less along said line to the south line of West Leigh Street; thence in a westerly direction 125 feet more or less along the south line of West Leigh Street to the point of beginning.

(18) *Linden Row Old and Historic District (100-114 East Franklin Street).*

The boundaries of such district are as follows: beginning at the intersection of the north line of East Franklin Street and the east line of North First Street; thence in an easterly direction along the north line of East Franklin Street 210.32 feet more or less to a point on the east

property line of parcel W000-0063-017 (as assigned by the assessor of the city, as of May 11, 1970, for tax purposes); thence in a northerly direction along a line parallel with North First Street 153 feet more or less to the south line of an east-west alley between East Grace Street and East Franklin Street; thence in a westerly direction along said line to the east line of North First Street; thence in a southerly direction along the east line of North First Street to the point of beginning.

(18a) *Mason's Hall Old and Historic District.*

The Mason's Hall Old and Historic District shall consist of the following properties, identified by street address and by tax parcel number in the 2017 records of the City Assessor:

1807 East Franklin Street

E000-0132/001

(19) *Mayo Memorial House Old and Historic District (110 West Franklin Street).*

The boundaries of such district are as follows: beginning at the intersection of the north line of West Franklin Street and the west line of North Jefferson Street; thence in an easterly direction along the north line of West Franklin Street 100.50 feet more or less to a point; thence in a northerly direction along a line parallel with the east line of North Jefferson Street 194.35 feet more or less to a point; thence in a westerly direction along a line parallel with the north line of West Franklin Street to the east line of North Jefferson Street; thence in a southerly direction along the east line of North Jefferson Street to the point of beginning.

(20) *Monument Avenue Old and Historic District.*

The boundaries of such district are as follows: beginning at the point of intersection of the west line of Roseneath Road and the north line extended of an east-west alley between West Grace Street and Monument Avenue; thence in an easterly direction along the north line of said alley to a point, at the west property line of parcel W000-1129-010 (as assigned by the assessor of the city, as of May 29, 1990, for tax purposes), said point being 61 feet more or less west of

the west line of North Davis Avenue; thence in a northerly direction along said line extended to the north line of West Grace Street; thence in an easterly direction along the north line of West Grace Street to a point at the west property line of parcel W000-1130-014 (as assigned by the assessor of the city, as of May 29, 1990, for tax purposes), said point being 32 feet more or less west of the west line of North Davis Avenue; thence in a northerly direction along said property line to the south line of an east-west alley between West Grace Street and West Broad Street; thence in an easterly direction along said line extended to the east line of North Davis Avenue; thence in a southerly direction along the east line of North Davis Avenue to a point at the north property line of parcel W000-1048-057 (as assigned by the assessor of the city, as of May 29, 1990, for tax purposes), said point being 101.5 feet more or less north of the north line of West Grace Street; thence in an easterly direction along said property line to a point on the east property line of said parcel, said point being 31.40 feet more or less east of the east line of North Davis Avenue; thence in a southerly direction along said property line extended to the south line of West Grace Street; thence in an easterly direction along the south line of West Grace Street to a point at the east property line of parcel W000-1087-001 (as assigned by the assessor of the city, as of May 29, 1990, for tax purposes), said point being 33 feet more or less east of the east line of North Davis Avenue; thence in a southerly direction along said property line to the north line of an east-west alley between West Grace Street and Monument Avenue; thence in an easterly direction along said line to a point at the west property line of parcel W000-0862-025, said point being 112 feet more or less west of the west line of North Allen Avenue; thence in a northerly direction along said line extended to a point at the west property line of parcel W000-0821-028 (as assigned by the assessor of the city, as of May 29, 1990, for tax purposes); thence in a northerly direction along said line to the south line of a 14-foot east-west alley between West Grace Street and West Broad Street; thence in an easterly direction along said line to the west

line of North Allen Avenue; thence in a northerly direction along the west line of North Allen Avenue to the south line of West Broad Street; thence in an easterly direction along the south line of West Broad Street to the east line of North Allen Avenue; thence in a southerly direction along the east line of North Allen Avenue to the south line of a 14-foot east-west alley between West Broad Street and West Grace Street; thence in an easterly direction along said line to a point at the east property line of parcel W000-0736-066 (as assigned by the assessor of the city, as of May 29, 1990, for tax purposes), said point being 28 feet more or less east of the east line of North Allen Avenue; thence in a southerly direction along said property line to the north line of West Grace Street; thence in an easterly direction along the north line of West Grace Street to a point at the east property line extended of parcel W000-0735-001 (as assigned by the assessor of the city, as of May 29, 1990, for tax purposes), said point being 140 feet more or less east of the east line of North Allen Avenue; thence in a southerly direction along said property line extended to the north line of an east-west alley between West Grace Street and Monument Avenue/West Franklin Street; thence in an easterly direction along said line to a point on the east property line extended of parcel W000-0614-026 (as assigned by the assessor of the city, as of February 23, 1971, for tax purposes), said point being 223 feet more or less west of the west line of Ryland Street; thence in a southerly direction along said east property line extended to the south line of West Franklin Street; thence westerly along the south line of West Franklin Street to the east line of Birch Street; thence in a southerly direction along the east line of Birch Street to the south line extended of an east-west alley between West Franklin Street and West Avenue; thence in a westerly direction along said line to the west line extended of a 20-foot north-south alley between Birch Street and North Lombardy Street; thence in a northerly direction a distance of 14.55 feet more or less along said line to a point 150 feet south of the south line of West Franklin Street; thence in a westerly direction along a line parallel to the south line of West

Franklin Street from said point to the east line of North Lombardy Street (Stuart Circle); thence in a southerly direction along the east line of North Lombardy Street to the south line extended of the southernmost east-west alley between Monument Avenue and Park Avenue; thence in a westerly direction along said line to the west line of the westernmost north-south alley between North Lombardy Street and North Allen Avenue; thence in a southerly direction along said line to the south line of the southernmost east-west alley between Monument Avenue and Park Avenue; thence in a westerly direction along said line to a point at the east property line extended of parcel W000-0666-001 (as assigned by the assessor of the city, as of May 29, 1990, for tax purposes), said point being 134 feet more or less east of the east line of North Allen Avenue; thence in a southerly direction along said line extended to the south line of Park Avenue; thence in a westerly direction along the south line of Park Avenue to the west line of North Allen Avenue; thence in a southerly direction along the west line of North Allen Avenue to the north line of the northernmost east-west alley between Park Avenue and Hanover Avenue; thence in a westerly direction along said line 99.58 feet more or less to a point at the west property line of parcel W000-0818-010 (as assigned by the assessor of the city, as of May 29, 1990, for tax purposes); thence in a northerly direction along said property line extended to a point on the north line of Park Avenue; thence in a westerly direction along the north line of Park Avenue to a point on the east line of the easternmost north-south alley between North Allen Avenue and North Meadow Street, said point being 123 feet more or less west of the west line of North Allen Avenue; thence in a northerly direction along said line to the south line of the southernmost east-west alley between Park Avenue and Monument Avenue; thence in a westerly direction along said line to the east line extended of a 20-foot north-south alley between North Allen Avenue and North Meadow Street; thence in a northerly direction along said line to the south line of the northernmost east-west alley between Monument Avenue and Park Avenue;

thence in a westerly direction along the south line of a series of east-west alleys between Monument Avenue and Park Avenue to the west line of a 10-foot north-south alley between Strawberry Street and North Davis Avenue; thence in a southerly direction along said line extended to the south line of Park Avenue; thence in a westerly direction along the south line of Park Avenue to the east line of North Davis Avenue; thence in a southerly direction along the east line of North Davis Avenue to the north line extended of a 10-foot east-west alley between Park Avenue and Kensington Avenue; thence in a westerly direction along said line extended to a point at the western property line of parcel W000-1127-013 (as assigned by the assessor of the city, as of May 29, 1990, for tax purposes), said point being 74 feet more or less west of the west line of North Davis Avenue; thence in a northerly direction along said property line to the south line of Park Avenue; thence in a westerly direction along the south line of Park Avenue to a point at the west property line extended of parcel W000-1128-007 (as assigned by the assessor of the city, as of May 29, 1990, for tax purposes), said point being 157 feet more or less east of the east line of North Robinson Street; thence in a northerly direction along said property line extended to a point, said point being 150 feet south of the south line of Monument Avenue; thence in a westerly direction along a line parallel to the south line of Monument Avenue to the east line of North Robinson Street; thence in a southerly direction along the east line of North Robinson Street to the south line extended of an east-west alley between Monument Avenue and Park Avenue; thence in a westerly direction along said line extended to the west line of North Mulberry Street; thence in a northerly direction along the west line of North Mulberry Street 11 feet more or less to a point, said point being 150 feet south of the south line of Monument Avenue; thence in a westerly direction along a line parallel to the south line of Monument Avenue to the west line of North Boulevard; thence in a northerly direction along the west line of North Boulevard to a point on the south property line of parcel W000-1250-004 (as assigned by

the assessor of the city, as of November 14, 1988, for tax purposes), said point being 121 feet more or less south of the south line of Monument Avenue; thence in a westerly direction along said line and the south property line of parcel W000-1250-020 (as assigned by the assessor of the city, as of November 14, 1988, for tax purposes) to the east line of a 15.33-foot north-south alley between North Boulevard and North Colonial Avenue; thence in a southerly direction along said line to the south line extended of the northernmost east-west alley between Monument Avenue and Park Avenue; thence in a westerly direction along said line as it meanders to the west line of Cleveland Street; thence in a northerly direction along the west line of Cleveland Street to the south line of a 16-foot east-west alley between Monument Avenue and West Franklin Street, said alley being parallel to West Franklin Street; thence in a westerly direction along said line to the south line extended of the northernmost east-west alley between Monument Avenue and West Franklin Street, said alley line being parallel to Monument Avenue; thence in a westerly direction along said line extended to the west line of Roseneath Road; thence in a northerly direction along the west line of Roseneath Road to the point of beginning.

(21) *William W. Morien House Old and Historic District (2226 West Main Street).*

The boundaries of such district are as follows: beginning at a point on West Main Street, said point being 54 feet more or less east of the east line of Strawberry Street; thence in an easterly direction along the north line of West Main Street 50 feet more or less to the east property line of parcel W000-0996-031 (as assigned by the assessor of the city, as of May 9, 1983, for tax purposes); thence in a northerly direction along said property line 125 feet more or less to the south line of the southernmost east-west alley between Floyd Avenue and West Main Street; thence in a westerly direction along said line to a point on the west property line of parcel W000-0996-031, said point being 54.50 feet more or less east of the east line of Strawberry Street; thence in a southerly direction along said property line to the point of beginning.

(22) *Norman Stewart House Old and Historic District (707 East Franklin Street).*

The boundaries of such district are as follows: beginning at a point on the south line of East Franklin Street, said point being 79.08 feet more or less east of the east line of North Seventh Street; thence in an easterly direction along the south line of East Franklin Street 52.50 feet more or less to a point; thence in a southerly direction 153.02 feet more or less to a point on the north line of Travellers Alley, said point being 132 feet more or less east of the east line of North Seventh Street; thence in a westerly direction 52 feet more or less along the north line of Travellers Alley to a point, said point being 79.08 feet more or less east of the east line of North Seventh Street; thence in a northerly direction 153 feet more or less along a line to the point of beginning.

(23) *Old Stone House Old and Historic District (1916 East Main Street).*

The boundaries of such district are as follows: beginning at a point on the north line of East Main Street, said point being 66 feet more or less west of the west line of North Twentieth Street; thence in a westerly direction along the north line of East Main Street 32 feet more or less to a point; thence in a northerly direction along a line 155 feet more or less to a point on the south line of Rose Alley, said point being 98 feet more or less west of the west line of North Twentieth Street; thence in an easterly direction 32 feet more or less along the south line of Rose Alley to a point, said point being 66 feet more or less west of the west line of North Twentieth Street; thence in a southerly direction 155 feet more or less along a line to the point of beginning.

(24) *Pace House Old and Historic District (100 West Franklin Street).*

The boundaries of such district are as follows: beginning at the intersection of the north line of West Franklin Street and the west line of North Adams Street; thence in a westerly direction along the north line of West Franklin Street 60.5 feet more or less to a point on the west property line of parcel W000-0126-011 (as assigned by the assessor of the city, as of October 28,

1985, for tax purposes); thence in a northerly direction along said property line parallel with the west line of North Adams Street 184.14 feet more or less to the south line of a private alley between West Grace Street and West Franklin Street; thence in an easterly direction along said line to the west line of North Adams Street; thence in a southerly direction along the west line of North Adams Street to the point of beginning.

(25) *St. Andrew's Episcopal Church Old and Historic District (Northwest corner South Laurel Street and Idlewood Avenue).*

The boundaries of such district are as follows: beginning at the intersection of the west line of South Laurel Street and north line of Idlewood Avenue; thence in a northerly direction along the west line of South Laurel Street 82 feet more or less to a point on the north property line of parcel W000-0252-020 (as assigned by the assessor of the city, as of January 9, 1978, for tax purposes); thence in a westerly direction along said property line 139 feet more or less to the east line of a north-south alley between South Cherry Street and South Laurel Street; thence in a southerly direction along said line to the north line of Idlewood Avenue; thence in an easterly direction along the north line of Idlewood Avenue to the point of beginning.

(26) *St. John's Church Old and Historic District.*

The boundaries of such district are as follows: beginning at the intersection of the east line of North Twenty-Second Street extended with the north line of East Franklin Street; thence in a westerly direction along the north line of East Franklin Street to the east line of North Twenty-First Street; thence in a northerly direction along the east line of North Twenty-First Street to the south line of the southernmost east-west alley between East Broad Street and East Marshall Street; thence in an easterly direction along said line to the east line of the easternmost north-south alley between North Twenty-First Street and North Twenty-Second Street; thence in a northerly direction along said line to the south line of a 15-foot east-west alley between East Broad Street and East Marshall Street; thence in an easterly direction along said line to the west

line of North Twenty-Second Street; thence in a southeasterly direction across North Twenty-Second Street to the north line of an east-west alley between East Broad Street and East Marshall Street; thence in an easterly direction along said line to the west line of North Twenty-Third Street; thence in a northerly direction along the west line of North Twenty-Third Street to the south line of East Marshall Street; thence in an easterly direction along the south line of East Marshall Street to the west line of North Twenty-Fifth Street; thence in a southerly direction along the west line of North Twenty-Fifth Street to a point, said point being midway between the north line of East Broad Street and the south line of East Marshall Street; thence in an easterly direction along a line parallel with East Broad Street to the west line of North Twenty-Ninth Street at a point, said point being midway between the north line of East Broad Street and the south line of East Marshall Street; thence in a northerly direction along the west line of North Twenty-Ninth Street to the south line of East Marshall Street; thence in an easterly direction along the south line of East Marshall Street to the east line of North Thirty-First Street; thence in a northerly direction along the east line of North Thirty-First Street to the south line of an east-west alley between East Marshall Street and East Clay Street; thence in an easterly direction along said line to the west line of North Thirty-Second Street; thence in a southerly direction along the west line of North Thirty-Second Street to the north line of East Grace Street; thence in a southeasterly direction along the western edge of the westernmost roadway in Chimborazo Park 400 feet more or less to a point; thence in a southwesterly direction a distance of 700 feet more or less to the intersection of the south line of Libby Terrace and the west line of South Thirty-First Street; thence in a southerly direction along the west line of South Thirty-First Street to the north line of Williamsburg Avenue; thence in a westerly direction along the north line of Williamsburg Avenue to its intersection with the north line of East Main Street; thence in a northwesterly direction along the north line of East Main Street to a point, said point being 140

feet more or less east of the east line of North Twenty-Seventh Street; thence in a northerly direction along a line parallel to the east line of North Twenty-Seventh Street to a point, said point being midway between the south line of East Franklin Street and the north line of East Main Street; thence in a westerly direction along a line parallel with the south line of East Franklin Street to a point on the east line of North Twenty-Second Street, said point being midway between the south line of East Franklin Street and the north line of East Main Street; thence in a northerly direction along the east line of North Twenty-Second Street to the point of beginning.

(27) *St. Paul's Episcopal Church Old and Historic District (815 East Grace Street).*

The boundaries of such district are as follows: beginning at the intersection of the south line of East Grace Street and the west line of North Ninth Street; thence in a westerly direction 67.50 feet more or less to a point; thence in a southerly direction along a line parallel with the west line of North Ninth Street 146.77 feet more or less to the north line of an alley between East Grace Street and East Franklin Street; thence in an easterly direction 67.50 feet more or less to the west line of North Ninth Street; thence in a northerly direction 146.77 feet more or less along the west line of North Ninth Street to the point of beginning.

(28) *St. Peter's Catholic Church Old and Historic District (800 East Grace Street).*

The boundaries of such district are as follows: beginning at the intersection of the north line of East Grace Street and the east line of North Eighth Street; thence in an easterly direction along the north line of East Grace Street 65 feet more or less to a point; thence in a northerly direction along a line parallel with the east line of North Eighth Street 163.17 feet more or less to a point; thence in a westerly direction 65 feet more or less to the east line of North Eighth Street; thence in a southerly direction 163.17 feet more or less along the east line of North Eighth Street to the point of beginning.

(29) *Second Presbyterian Church Old and Historic District (9 North Fifth Street).*

The boundaries of such district are as follows: beginning at a point on the east line of North Fifth Street, said point being 54.29 feet more or less north of the north line of East Main Street; thence in a northerly direction along the east line of North Fifth Street 108.83 feet more or less to a point; thence in an easterly direction 130.96 feet more or less to the west line of a north-south alley between North Fifth Street and North Sixth Street; thence in a southerly direction along said line to a point 54.29 feet more or less north of the north line of East Main Street; thence in a westerly direction along a line to the point of beginning.

(30) *Shockoe Slip Old and Historic District.*

The boundaries of such district are as follows: beginning at the intersection of the north right-of-way line of the Richmond Metropolitan Authority Downtown Expressway and the east line of South Twelfth Street; thence in a northerly direction along the east line of South Twelfth Street to the south line of East Main Street; thence in an easterly direction along the south line of East Main Street to the west line of South Fifteenth Street; thence in a southerly direction along the west line of South Fifteenth Street to the south line extended of an east-west 14.21-foot alley between East Main Street and East Cary Street; thence 187 feet more or less in an easterly direction along said line extended to a point at the west line of a north-south overhead railway trestle; thence 600 feet more or less in a southerly direction along the west line of the overhead railway trestle to a point at the intersection of the west line of the overhead railway trestle and the north line of Dock Street; thence in a westerly direction along the north line of Dock Street extended to the west line of South Fourteenth Street; thence 25 feet more or less in a southerly direction along the west line of South Fourteenth Street to the south property line of parcel E000-0069-001a (as assigned by the assessor of the city, as of February 8, 1999 for tax purposes); thence in a westerly direction along said property line and the south property line of parcel E000-

0069-001b extended to the west line of Virginia Street; thence in a southerly direction along the west line of Virginia Street to the south property line of 140 Virginia Street, said line being 80.12 feet more or less south of the south line of Pope's Alley; thence in a westerly direction along the south building line extended in a westerly direction as it meanders to the west property line of 140 Virginia Street; thence in a northerly direction along said line extended to the north right-of-way line of the Richmond Metropolitan Authority Downtown Expressway; thence in a westerly direction along the north right-of-way line of the Richmond Metropolitan Authority Downtown Expressway as it meanders to the point of beginning.

(31) *Shockoe Valley Old and Historic District.*

The boundaries of such district are as follows: beginning at the point of intersection of the east line of North Eighteenth Street with the south line of East Broad Street; thence in an easterly direction along the south line of East Broad Street to the east line of North Nineteenth Street; thence in a northerly direction along the east line of North Nineteenth Street to the south line of East Marshall Street; thence in an easterly direction along the south line of East Marshall Street to the east line of North Twenty-First Street; thence in a southerly direction along the east line of North Twenty-First Street to the north line of East Franklin Street; thence in a westerly direction along the north line of East Franklin Street to the east line of North Eighteenth Street; thence in a northerly direction along the east line of North Eighteenth Street to the point of beginning.

(32) *Sixth Mount Zion Baptist Church Old and Historic District (12-14 West Duval Street).*

The boundaries of such district are as follows: beginning at the intersection of the west line of North First Street and the north line of East Duval Street; thence in a westerly direction along the north line of East and West Duval Streets, which is also the south property lines of parcels N000-0106-040, N000-0106-026, and N000-0106-039 (as assigned by the assessor of the

city, as of April 26, 2004, for tax purposes); 962 feet more or less to a point at the southwest corner of parcel N000-0106-039; thence in a northerly direction along a line perpendicular with the north line of West Duval Street 40 feet more or less to the northwest corner of said parcel; thence in a easterly direction along the north property line to the northeast corner of said parcel, which is also a point on the west property of parcel N000-0106-026; said point 70 feet more or less along a line perpendicular with the north line of West Duval Street; thence in a northerly direction along the west property to the northwest corner of said parcel; thence in a easterly direction, then southeasterly direction along the north property line to the northeast corner of said parcel, thence in a southerly direction along the east property line to a point, which is also the northwest corner of parcel N000-0106-040; said point 99 feet more or less along a line perpendicular with the north line of West Duval Street; thence in a easterly direction along the north property line to the northeast corner of said parcel, which is also on the west line of North First Street; thence in a southerly direction along the west line of North First Street 12 feet more or less to the point of beginning.

(33) *Springhill Old and Historic District.*

The boundaries of such district are as follows: Beginning at the point of intersection of the north right-of-way line of Semmes Avenue and the east right-of-way line of the north-south alley between West 22nd Street and West 24th Street (West 23rd Street being nonexistent); thence in a northerly direction along said east right-of-way line approximately two and one-half blocks to the south right-of-way line of the northernmost east-west alley between Riverside Drive and Semmes Avenue; thence in an easterly direction along said south right-of-way line to the west property line of parcel S000-0500/035 (as assigned by the assessor of the city, as of July 11, 2005, for tax purposes); thence in a northerly direction along said west property line to the south right-of-way line of Riverside Drive; thence in a curving line in an easterly direction along

said south right-of-way line approximately two blocks to the west right-of-way line of West 21st Street; thence in a southerly direction along said west right-of-way line to the south right-of-way line of Stonewall Avenue; thence in an easterly direction along said south right-of-way line approximately two and one-half blocks to the west right-of-way line of the north-south alley between West 19th Street and Cowardin Avenue; thence in a southerly direction along the west right-of-way lines of a series of north-south alleys between West 19th Street and Cowardin Avenue approximately one and one-half blocks to the south property line of parcel S000-0249/017 (as assigned by the assessor of the city, as of July 11, 2005, for tax purposes); thence in a westerly direction along said south property line extended, across West 19th Street, to the southeast corner of parcel S000-0302/006 (as assigned by the assessor of the city, as of July 11, 2005, for tax purposes); thence in a westerly direction along the north right-of-way lines of a series of east-west alleys between Spring Hill Avenue and Semmes Avenue approximately three and one-half blocks to the east property line of parcel S000-050/030 (as assigned by the assessor of the city, as of July 11, 2005, for tax purposes); thence in a southerly direction along said east property line to the south property line of said parcel; thence in a westerly direction along said south property line to the east property line of parcel S000-0500/028 (as assigned by the assessor of the city, as of July 11, 2005, for tax purposes); thence in a southerly direction along said east property line to the north right-of-way line of Semmes Avenue; thence in a westerly direction along said north right-of-way line to the point of beginning.

(34) *Stonewall Jackson School Old and Historic District (1520 West Main Street).*

The boundaries of such district are as follows: beginning at the intersection of the north line of West Main Street and the east line of North Lombardy Street; thence in a northerly direction along the east line of North Lombardy Street to the south line of the southernmost east-west alley between Floyd Avenue and West Main Street; thence in an easterly direction along

said line 171.01 feet more or less to a point on the east property line of parcel W000-0607-036 (as assigned by the assessor of the city, as of July 11, 1983, for tax purposes); thence in a southerly direction along said property line and the east property line of parcel W000-0607-037 (as assigned by the assessor of the city, as of July 11, 1983, for tax purposes) 179.75 feet more or less to the north line of West Main Street; thence in a westerly direction along the north line of West Main Street to the point of beginning.

(35) *Talavera Old and Historic District (2315 West Grace Street).*

The boundaries of such district are as follows: beginning at a point on the south line of West Grace Street at the west property line of parcel W000-1087-016 (as assigned by the assessor of the city, as of September 22, 1986, for tax purposes), thence in a westerly direction along the south line of West Grace Street 59 feet more or less to a point on the west property line of said parcel; thence in a southerly direction along said property line to a point on the north line of an east-west alley between West Grace Street and Monument Avenue; thence in a westerly direction 59 feet more or less along said line to a point on the east property line of said parcel; thence in a northerly direction along said property line to the point of beginning.

(36) *The Two Hundred Block West Franklin Street Old and Historic District.*

The boundaries of such district are as follows: beginning at the point of intersection of the west line of North Madison Street and the north line extended of an east-west alley between West Grace and West Franklin Streets; thence in an easterly direction along said line extended to the east line of North Jefferson Street; thence in a southerly direction along the east line of North Jefferson Street to the south line extended of an east-west alley between West Franklin Street and West Main Street; thence in a westerly direction along said line to a point on the east property line of parcel W000-0146-017 (as assigned by the assessor of the city, as of September 24, 1990, for tax purposes), said point being 104 feet more or less east of the east line of North

Madison Street; thence in a southerly direction along said property line to the north line of West Main Street; thence in a westerly direction along the north line of West Main Street to the west line of North Madison Street; thence in a northerly direction along the west line of North Madison Street to the point of beginning.

(36a) Union Hill Old and Historic District.

The Union Hill Old and Historic District shall consist of the following properties, identified by street address and by tax parcel number in the 2009 records of the City Assessor:

221 North 21 st Street	E000-0220/001
(no street address)	E000-0220/002
1928 Princess Anne Avenue	E000-0251/024
1922 Princess Anne Avenue	E000-0251/025
1918 Princess Anne Avenue	E000-0251/027
1916 Princess Anne Avenue	E000-0251/028
1914 Princess Anne Avenue	E000-0251/029
1912 Princess Anne Avenue	E000-0251/030
1910 Princess Anne Avenue	E000-0251/031
1906 Princess Anne Avenue	E000-0251/032
1900 Princess Anne Avenue	E000-0251/037
2003 Cedar Street	E000-0252/001
2005 Cedar Street	E000-0252/002
2007 Cedar Street	E000-0252/003
2009 Cedar Street	E000-0252/004
618 North 21 st Street	E000-0252/005
616 North 21 st Street	E000-0252/006
614½ North 21 st Street	E000-0252/007
614 North 21 st Street	E000-0252/008
612½ North 21 st Street	E000-0252/009
612 North 21 st Street	E000-0252/010
610 North 21 st Street	E000-0252/011
608 North 21 st Street	E000-0252/012
606 North 21 st Street	E000-0252/013
604 North 21 st Street	E000-0252/014
602½ North 21 st Street	E000-0252/015
602 North 21 st Street	E000-0252/016
600 North 21 st Street	E000-0252/017
532 North 21 st Street	E000-0252/018
530 North 21 st Street	E000-0252/019
528 North 21 st Street	E000-0252/020
526 North 21 st Street	E000-0252/021
522 North 21 st Street	E000-0252/023
520 North 21 st Street	E000-0252/024

2020 Princess Anne Avenue	E000-0252/025
2018 Princess Anne Avenue	E000-0252/026
2016 Princess Anne Avenue	E000-0252/027
2014 Princess Anne Avenue	E000-0252/028
2012 Princess Anne Avenue	E000-0252/029
2010 Princess Anne Avenue	E000-0252/030
2008 Princess Anne Avenue	E000-0252/031
2002 Princess Anne Avenue	E000-0252/032
507 Mosby Street	E000-0252/033
509 Mosby Street	E000-0252/037
513 Mosby Street	E000-0252/039
517 Mosby Street	E000-0252/040
519 Mosby Street	E000-0252/041
523 Mosby Street	E000-0252/042
525 Mosby Street	E000-0252/044
529 Mosby Street	E000-0252/045
531 Mosby Street	E000-0252/047
533 Mosby Street	E000-0252/048
535 Mosby Street	E000-0252/049
537 Mosby Street	E000-0252/050
539 Mosby Street	E000-0252/051
541 Mosby Street	E000-0252/052
2111 M Street	E000-0253/001
2109 M Street	E000-0253/002
2113 M Street	E000-0253/005
2115 M Street	E000-0253/006
2117 M Street	E000-0253/007
2119 M Street	E000-0253/008
2121 M Street	E000-0253/010
604 North 22 nd Street	E000-0253/011
602 North 22 nd Street	E000-0253/012
2114½ East Leigh Street	E000-0253/014
2112½ East Leigh Street	E000-0253/015
2110 East Leigh Street	E000-0253/016
2108 East Leigh Street	E000-0253/017
517 North 21 st Street	E000-0253/018
521 North 21 st Street	E000-0253/020
523 North 21 st Street	E000-0253/021
529 North 21 st Street	E000-0253/024
531 North 21 st Street	E000-0253/025
600 2 North 22 nd Street	E000-0253/026
520 North 22 nd Street	E000-0254/002
518 North 22 nd Street	E000-0254/003
516 North 22 nd Street	E000-0254/004
514 North 22 nd Street	E000-0254/005
512 North 22 nd Street	E000-0254/006
510 North 22 nd Street	E000-0254/007
508 North 22 nd Street	E000-0254/008

506 North 22 nd Street	E000-0254/009
504 North 22 nd Street	E000-0254/010
2112 East Clay Street	E000-0254/012
2110 East Clay Street	E000-0254/014
2108 East Clay Street	E000-0254/015
2102 East Clay Street	E000-0254/016
2100 East Clay Street	E000-0254/018
507 North 21 st Street	E000-0254/019
509 North 21 st Street	E000-0254/021
511 North 21 st Street	E000-0254/023
2205 East Leigh Street	E000-0256/001
512 North 23 rd Street	E000-0256/003
508 North 23 rd Street	E000-0256/004
506 North 23 rd Street	E000-0256/005
2224 Jefferson Avenue	E000-0256/007
2220 Jefferson Avenue	E000-0256/009
2218 Jefferson Avenue	E000-0256/011
2214 Jefferson Avenue	E000-0256/013
2212 Jefferson Avenue	E000-0256/014
2210 Jefferson Avenue	E000-0256/015
2208 Jefferson Avenue	E000-0256/016
2206 Jefferson Avenue	E000-0256/017
2204 Jefferson Avenue	E000-0256/018
2202 Jefferson Avenue	E000-0256/019
509 North 22 nd Street	E000-0256/021
511 North 22 nd Street	E000-0256/023
513 North 22 nd Street	E000-0256/024
515 North 22 nd Street	E000-0256/025
517 North 22 nd Street	E000-0256/026
519 North 22 nd Street	E000-0256/027
521 North 22 nd Street	E000-0256/028
523 North 22 nd Street	E000-0256/029
510 North 23 rd Street	E000-0256/031
2103 Cedar Street	E000-0290/001
2107 Cedar Street	E000-0290/003
2109 Cedar Street	E000-0290/004
2111 Cedar Street	E000-0290/005
2113 Cedar Street	E000-0290/006
2115 Cedar Street	E000-0290/007
2117 Cedar Street	E000-0290/008
2121 Cedar Street	E000-0290/010
2120 M Street	E000-0290/011
2118 M Street	E000-0290/012
2116 M Street	E000-0290/013
2114 M Street	E000-0290/014
2112 M Street	E000-0290/015
2110 M Street	E000-0290/017
2102 M Street	E000-0290/018

2100 M Street	E000-0290/019
601 North 21 st Street	E000-0290/020
603 North 21 st Street	E000-0290/021
603½ North 21 st Street	E000-0290/022
605 North 21 st Street	E000-0290/023
607 North 21 st Street	E000-0290/024
609 North 21 st Street	E000-0290/025
611 North 21 st Street	E000-0290/026
613 North 21 st Street	E000-0290/027
615 North 21 st Street	E000-0290/028
617 North 21 st Street	E000-0290/029
619 North 21 st Street	E000-0290/030
2215 M Street	E000-0292/001
2219 M Street	E000-0292/002
620 North 23 rd Street	E000-0292/003
616 North 23 rd Street	E000-0292/005
614½ North 23 rd Street	E000-0292/008
614 North 23 rd Street	E000-0292/009
612 North 23 rd Street	E000-0292/010
610 North 23 rd Street	E000-0292/011
608 North 23 rd Street	E000-0292/012
606 North 23 rd Street	E000-0292/013
604 North 23 rd Street	E000-0292/014
600 North 23 rd Street	E000-0292/015
2208 East Leigh Street	E000-0292/017
2206 East Leigh Street	E000-0292/018
2204 East Leigh Street	E000-0292/019
601 North 22 nd Street	E000-0292/020
603 North 22 nd Street	E000-0292/021
605 North 22 nd Street	E000-0292/022
607 North 22 nd Street	E000-0292/023
609 North 22 nd Street	E000-0292/024
611 North 22 nd Street	E000-0292/025
613 North 22 nd Street	E000-0292/026
(no street address)	E000-0292/027
2311 M Street	E000-0293/001
2311½ M Street	E000-0293/002
2315 M Street	E000-0293/003
2317 M Street	E000-0293/004
2319 M Street	E000-0293/005
608 North 24 th Street	E000-0293/006
606 North 24 th Street	E000-0293/007
2314 Jefferson Avenue	E000-0293/009
2312 Jefferson Avenue	E000-0293/010
2310 Jefferson Avenue	E000-0293/011
2308 Jefferson Avenue	E000-0293/012
2306 East Leigh Street	E000-0293/013
2304 East Leigh Street	E000-0293/014

601 North 23 rd Street	E000-0293/015
601½ North 23 rd Street	E000-0293/016
603½ North 23 rd Street	E000-0293/017
605 North 23 rd Street	E000-0293/019
607 North 23 rd Street	E000-0293/020
609 North 23 rd Street	E000-0293/021
611 North 23 rd Street	E000-0293/022
613 North 23 rd Street	E000-0293/023
615 North 23 rd Street	E000-0293/025
617½ North 23 rd Street	E000-0293/027
619 North 23 rd Street	E000-0293/029
(no street address)	E000-0293/030
(no street address)	E000-0293/035
(no street address)	E000-0293/036
(no street address)	E000-0293/037
(no street address)	E000-0293/040
603 North 23 rd Street	E000-0293/041
606½ North 24 th Street	E000-0293/042
2312 Rear Jefferson Avenue	E000-0293/043
2306 Jefferson Avenue	E000-0295/031
1921 Carrington Street	E000-0327/001
1925 Carrington Street	E000-0327/006
1927 Carrington Street	E000-0327/008
814 North 21 st Street	E000-0327/014
812 North 21 st Street	E000-0327/015
810 North 21 st Street	E000-0327/016
806 North 21 st Street	E000-0327/018
804 North 21 st Street	E000-0327/019
800 North 21 st Street	E000-0327/021
2018 Venable Street	E000-0327/022
2016 Venable Street	E000-0327/023
2014 Venable Street	E000-0327/024
2010 Venable Street	E000-0327/025
2008 Venable Street	E000-0327/027
2004 Venable Street	E000-0327/029
2002 Venable Street	E000-0327/030
701 Mosby Street	E000-0327/031
715 Mosby Street	E000-0327/035
717 Mosby Street	E000-0327/038
719 Mosby Street	E000-0327/039
721 Mosby Street	E000-0327/040
1929 Carrington Street	E000-0327/041
2001 Venable Street	E000-0328/001
2007 Venable Street	E000-0328/004
2009 Venable Street	E000-0328/005
2011 Venable Street	E000-0328/006
2013 Venable Street	E000-0328/007
2015 Venable Street	E000-0328/008

2017 Venable Street	E000-0328/009
2019 Venable Street	E000-0328/010
2021 Venable Street	E000-0328/012
2025 Venable Street	E000-0328/013
712 North 21 st Street	E000-0328/014
710 North 21 st Street	E000-0328/015
708 North 21 st Street	E000-0328/016
706 North 21 st Street	E000-0328/017
704 North 21 st Street	E000-0328/019
702 North 21 st Street	E000-0328/020
700 North 21 st Street	E000-0328/021
2012 Cedar Street	E000-0328/022
2010 Cedar Street	E000-0328/023
2008 Cedar Street	E000-0328/024
2006 Cedar Street	E000-0328/025
2004 Cedar Street	E000-0328/026
2002 Cedar Street	E000-0328/027
2000 Cedar Street	E000-0328/028
812 North 22 nd Street	E000-0329/001
810 North 22 nd Street	E000-0329/004
804 North 22 nd Street	E000-0329/005
800 North 22 nd Street	E000-0329/008
2116 Cedar Street	E000-0329/009
2108 Cedar Street	E000-0329/010
2106 Cedar Street	E000-0329/013
2104 Cedar Street	E000-0329/014
701 North 21 st Street	E000-0329/015
703 North 21 st Street	E000-0329/016
705 North 21 st Street	E000-0329/017
705½ North 21 st Street	E000-0329/018
707 North 21 st Street	E000-0329/020
709 North 21 st Street	E000-0329/021
711 North 21 st Street	E000-0329/022
713 North 21 st Street	E000-0329/023
2110 Cedar Street	E000-0329/024
2112 Cedar Street	E000-0329/025
2114 Cedar Street	E000-0329/026
814 Jessamine Street	E000-0330/001
812 Jessamine Street	E000-0330/003
810 Jessamine Street	E000-0330/004
808 Jessamine Street	E000-0330/005
806 Jessamine Street	E000-0330/006
802 Jessamine Street	E000-0330/008
800 Jessamine Street	E000-0330/009
(no street address)	E000-0330/010
2216 Cedar Street	E000-0330/011
2210 Cedar Street	E000-0330/012
2207 Burton Street	E000-0330/013

2208 Cedar Street	E000-0330/015
2206 Cedar Street	E000-0330/016
2202 Cedar Street	E000-0330/017
2200 Cedar Street	E000-0330/019
816 Jessamine Street	E000-0330/020
2211 Cedar Street	E000-0331/001
2213 Cedar Street	E000-0331/003
2215 Cedar Street	E000-0331/004
2217 Cedar Street	E000-0331/005
2221 Cedar Street	E000-0331/007
2225 Cedar Street	E000-0331/008
730 North 23 rd Street	E000-0331/009
728 North 23 rd Street	E000-0331/010
726 North 23 rd Street	E000-0331/011
718 North 23 rd Street	E000-0331/012
724 Jessamine Street	E000-0331/015
722 Jessamine Street	E000-0331/016
720 Jessamine Street	E000-0331/017
718 Jessamine Street	E000-0331/018
716 North 23 rd Street	E000-0331/019
714 North 23 rd Street	E000-0331/020
712 North 23 rd Street	E000-0331/021
710 North 23 rd Street	E000-0331/022
708 North 23 rd Street	E000-0331/023
702 North 23 rd Street	E000-0331/024
2208 M Street	E000-0331/033
2206 M Street	E000-0331/034
2202 M Street	E000-0331/036
711 North 22 nd Street	E000-0331/038
713 North 22 nd Street	E000-0331/039
715 North 22 nd Street	E000-0331/040
717 North 22 nd Street	E000-0331/041
719 North 22 nd Street	E000-0331/043
723 North 22 nd Street	E000-0331/045
725 North 22 nd Street	E000-0331/046
727 North 22 nd Street	E000-0331/047
2212 M Street	E000-0331/050
2210 M Street	E000-0331/051
2204 M Street	E000-0331/052
2305 Cedar Street	E000-0332/004
712 North 24 th Street	E000-0332/011
710 North 24 th Street	E000-0332/012
708 North 24 th Street	E000-0332/014
706 North 24 th Street	E000-0332/015
704 North 24 th Street	E000-0332/016
702 North 24 th Street	E000-0332/017
700 North 24 th Street	E000-0332/018
2312 M Street	E000-0332/019

2306 M Street	E000-0332/021
705 North 23 rd Street	E000-0332/023
701 North 23 rd Street	E000-0332/024
709 North 23 rd Street	E000-0332/028
711 North 23 rd Street	E000-0332/029
713 North 23 rd Street	E000-0332/030
2405 Cedar Street	E000-0333/001
2407 Cedar Street	E000-0333/002
726 North 25 th Street	E000-0333/004
722 North 25 th Street	E000-0333/006
720 North 25 th Street	E000-0333/007
718 North 25 th Street	E000-0333/008
716 North 25 th Street	E000-0333/009
714 North 25 th Street	E000-0333/010
712 North 25 th Street	E000-0333/011
710 North 25 th Street	E000-0333/012
708 North 25 th Street	E000-0333/013
700 North 25 th Street	E000-0333/014
2412 M Street	E000-0333/018
2410 M Street	E000-0333/019
701 North 24 th Street	E000-0333/020
703 North 24 th Street	E000-0333/021
705 North 24 th Street	E000-0333/022
707 North 24 th Street	E000-0333/023
709 North 24 th Street	E000-0333/024
713 North 24 th Street	E000-0333/026
715 North 24 th Street	E000-0333/027
717 North 24 th Street	E000-0333/028
719 North 24 th Street	E000-0333/029
721 North 24 th Street	E000-0333/030
723 North 24 th Street	E000-0333/031
725 North 24 th Street	E000-0333/032
727 North 24 th Street	E000-0333/033
2411 M Street	E000-0334/001
2416 Jefferson Avenue	E000-0334/003
2402 Jefferson Avenue	E000-0334/010
1903 O Street	E000-0370/001
1905 O Street	E000-0370/003
1909 O Street	E000-0370/005
900 North 20 th Street	E000-0370/013
1924 Carrington Street	E000-0370/015
801 Mosby Street	E000-0370/020
803 Mosby Street	E000-0370/021
805 Mosby Street	E000-0370/022
807 Mosby Street	E000-0370/023
809 Mosby Street	E000-0370/024
811 Mosby Street	E000-0370/026
815 Mosby Street	E000-0370/028

819 Mosby Street	E000-0370/030
821 Mosby Street	E000-0370/031
823 Mosby Street	E000-0370/032
872 North 22 nd Street	E000-0372/001
870 North 22 nd Street	E000-0372/002
868 North 22 nd Street	E000-0372/003
866 North 22 nd Street	E000-0372/004
864 North 22 nd Street	E000-0372/005
862 North 22 nd Street	E000-0372/006
2120 Venable Street	E000-0372/007
2118 Venable Street	E000-0372/012
2116 Venable Street	E000-0372/013
2114 Venable Street	E000-0372/014
2112 Venable Street	E000-0372/015
2110 Venable Street	E000-0372/016
2108 Venable Street	E000-0372/017
2104 Venable Street	E000-0372/018
803 North 21 st Street	E000-0372/019
805 North 21 st Street	E000-0372/020
809 North 21 st Street	E000-0372/022
811 North 21 st Street	E000-0372/023
813 North 21 st Street	E000-0372/024
807 1 North 21 st Street	E000-0372/028
2101 Venable Street	E000-0373/001
2105 Venable Street	E000-0373/003
2107 Venable Street	E000-0373/004
2109 Venable Street	E000-0373/005
2111 Venable Street	E000-0373/006
2113 Venable Street	E000-0373/007
2115 Venable Street	E000-0373/008
2115½ Venable Street	E000-0373/009
2117 Venable Street	E000-0373/010
2119 Venable Street	E000-0373/011
2121 Venable Street	E000-0373/012
816 North 22 nd Street	E000-0373/013
876 Jessamine Street	E000-0374/001
870 Jessamine Street	E000-0374/005
868 Jessamine Street	E000-0374/006
866 Jessamine Street	E000-0374/007
2222 Venable Street	E000-0374/008
2220 Venable Street	E000-0374/009
2218 Venable Street	E000-0374/010
2216 Venable Street	E000-0374/011
2212 Venable Street	E000-0374/012
2210 Venable Street	E000-0374/014
2208 Venable Street	E000-0374/015
2206 Venable Street	E000-0374/016
2204 Venable Street	E000-0374/017

2202 Venable Street	E000-0374/018
2200 Venable Street	E000-0374/019
863 North 22 nd Street	E000-0374/020
865 North 22 nd Street	E000-0374/021
867 North 22 nd Street	E000-0374/022
869 North 22 nd Street	E000-0374/023
871 North 22 nd Street	E000-0374/024
873 North 22 nd Street	E000-0374/025
872 Jessamine Street	E000-0374/026
874 Jessamine Street	E000-0374/027
2201 Venable Street	E000-0375/001
2205 Venable Street	E000-0375/002
2207 Venable Street	E000-0375/003
2209 Venable Street	E000-0375/004
2211 Venable Street	E000-0375/005
2213 Venable Street	E000-0375/006
2215 Venable Street	E000-0375/007
2217 Venable Street	E000-0375/008
2219 Venable Street	E000-0375/009
2221 Venable Street	E000-0375/010
815 North 22 nd Street	E000-0375/012
817 North 22 nd Street	E000-0375/013
820 North 23 rd Street	E000-0376/001
818 North 23 rd Street	E000-0376/003
814 North 23 rd Street	E000-0376/005
812 North 23 rd Street	E000-0376/006
802 North 23 rd Street	E000-0376/007
2230 Cedar Street	E000-0376/009
2228 Cedar Street	E000-0376/010
803 Jessamine Street	E000-0376/011
807 Jessamine Street	E000-0376/012
809 Jessamine Street	E000-0376/014
811 Jessamine Street	E000-0376/015
813 Jessamine Street	E000-0376/016
815 Jessamine Street	E000-0376/017
816 North 23 rd Street	E000-0376/018
2309 O Street	E000-0378/001
826 North 24 th Street	E000-0378/002
824 North 24 th Street	E000-0378/003
822 North 24 th Street	E000-0378/004
820 North 24 th Street	E000-0378/005
818 North 24 th Street	E000-0378/006
816 North 24 th Street	E000-0378/007
814 North 24 th Street	E000-0378/008
2314 Cedar Street	E000-0378/012
805½ North 23 rd Street	E000-0378/022
807 North 23 rd Street	E000-0378/023
811 North 23 rd Street	E000-0378/024

813 North 23 rd Street	E000-0378/026
815 North 23 rd Street	E000-0378/028
815½ North 23 rd Street	E000-0378/029
817 North 23 rd Street	E000-0378/030
817½ North 23 rd Street	E000-0378/031
2405 O Street	E000-0379/001
2409 O Street	E000-0379/002
818 North 25 th Street	E000-0379/004
816½ North 25 th Street	E000-0379/005
816 North 25 th Street	E000-0379/006
814 North 25 th Street	E000-0379/007
812 North 25 th Street	E000-0379/008
810 North 25 th Street	E000-0379/010
808 North 25 th Street	E000-0379/011
806½ North 25 th Street	E000-0379/012
806 North 25 th Street	E000-0379/013
804 North 25 th Street	E000-0379/014
802 North 25 th Street	E000-0379/015
800 North 25 th Street	E000-0379/016
2410 Cedar Street	E000-0379/017
2408 Cedar Street	E000-0379/018
2406 Cedar Street	E000-0379/019
2404 Cedar Street	E000-0379/020
801 North 24 th Street	E000-0379/021
803 North 24 th Street	E000-0379/022
805 North 24 th Street	E000-0379/023
807 North 24 th Street	E000-0379/024
809 North 24 th Street	E000-0379/025
811½ North 24 th Street	E000-0379/026
815 North 24 th Street	E000-0379/029
817 North 24 th Street	E000-0379/030
819 North 24 th Street	E000-0379/031
821 North 24 th Street	E000-0379/032
823 North 24 th Street	E000-0379/033
811 North 24 th Street	E000-0379/034
2113 Carrington Street	E000-0423/007
2115 Carrington Street	E000-0423/008
2117 Carrington Street	E000-0423/009
2119 Carrington Street	E000-0423/010
916 Tulip Street	E000-0423/012
912 Tulip Street	E000-0423/014
2242 Venable Street	E000-0423/016
2240 Venable Street	E000-0423/017
2238½ Venable Street	E000-0423/018
2238 Venable Street	E000-0423/019
2236 Venable Street	E000-0423/020
2230 Venable Street	E000-0423/021
2203 Carrington Street	E000-0425/001

2205 Carrington Street	E000-0425/002
2207 Carrington Street	E000-0425/003
2209 Carrington Street	E000-0425/005
978 Pink Street	E000-0425/008
976 Pink Street	E000-0425/009
974 Pink Street	E000-0425/010
972 Pink Street	E000-0425/011
970 Pink Street	E000-0425/012
968 Pink Street	E000-0425/013
966 Pink Street	E000-0425/014
964 Pink Street	E000-0425/015
962 Pink Street	E000-0425/016
2322 Venable Street	E000-0425/017
2320 Venable Street	E000-0425/018
2318 Venable Street	E000-0425/019
2316 Venable Street	E000-0425/020
2314 Venable Street	E000-0425/021
2312 Venable Street	E000-0425/022
2310½ Venable Street	E000-0425/023
2310 Venable Street	E000-0425/024
2308 Venable Street	E000-0425/025
2306 Venable Street	E000-0425/026
2304 Venable Street	E000-0425/027
2302 Venable Street	E000-0425/028
2300 Venable Street	E000-0425/029
909 Tulip Street	E000-0425/030
911 Tulip Street	E000-0425/031
915 Tulip Street	E000-0425/032
917 Tulip Street	E000-0425/033
2223 Venable Street	E000-0426/001
2225 Venable Street	E000-0426/003
2227 Venable Street	E000-0426/006
2229 Venable Street	E000-0426/007
2235 Venable Street	E000-0426/008
2235½ Venable Street	E000-0426/009
2237 Venable Street	E000-0426/010
2239 Venable Street	E000-0426/011
2301 Venable Street	E000-0427/001
2303 Venable Street	E000-0427/002
2305 Venable Street	E000-0427/003
2307 Venable Street	E000-0427/004
2309 Venable Street	E000-0427/005
2311 Venable Street	E000-0427/006
2313 Venable Street	E000-0427/007
2315 Venable Street	E000-0427/008
2319 Venable Street	E000-0427/009
2325 Venable Street	E000-0427/013
2322 Burton Street	E000-0427/014

2314 Burton Street	E000-0427/020
2312 Burton Street	E000-0427/021
2310 Burton Street	E000-0427/022
2308 Burton Street	E000-0427/023
2306 Burton Street	E000-0427/024
2304 Burton Street	E000-0427/025
2302 Burton Street	E000-0427/026
2300 Burton Street	E000-0427/027
908 North 24 th Street	E000-0428/001
906 North 24 th Street	E000-0428/002
904 North 24 th Street	E000-0428/003
902 North 24 th Street	E000-0428/004
900 North 24 th Street	E000-0428/005
2301 Burton Street	E000-0428/006
922 North 25 th Street	E000-0429/001
918 North 25 th Street	E000-0429/003
916 North 25 th Street	E000-0429/004
914 North 25 th Street	E000-0429/005
910 North 25 th Street	E000-0429/006
908 North 25 th Street	E000-0429/007
906 North 25 th Street	E000-0429/008
904 North 25 th Street	E000-0429/009
902 North 25 th Street	E000-0429/010
900 North 25 th Street	E000-0429/011
901 North 24 th Street	E000-0429/015
903 North 24 th Street	E000-0429/016
905 North 24 th Street	E000-0429/017
907 North 24 th Street	E000-0429/018
909 North 24 th Street	E000-0429/019
(no street address)	E000-0429/020
911 North 24 th Street	E000-0429/021
2305 Carrington Street	E000-0470/002
2305½ Carrington Street	E000-0470/003
2307 Carrington Street	E000-0470/004
2309 Carrington Street	E000-0470/005
2311 Carrington Street	E000-0470/006
2315 Carrington Street	E000-0470/007
2317 Carrington Street	E000-0470/009
2321 Carrington Street	E000-0470/011
2323 Carrington Street	E000-0470/012
2325 Carrington Street	E000-0470/013
2327 Carrington Street	E000-0470/014
1016 Russell Street	E000-0470/015
1014 Russell Street	E000-0470/016
2416 Venable Street	E000-0470/019
2414 Venable Street	E000-0470/020
2412½ Venable Street	E000-0470/022
2412 Venable Street	E000-0470/023

2410 Venable Street	E000-0470/024
2408 Venable Street	E000-0470/026
2406 Venable Street	E000-0470/027
2404 Venable Street	E000-0470/028
2402½ Venable Street	E000-0470/029
2402 Venable Street	E000-0470/030
2400 Venable Street	E000-0470/031
961 Pink Street	E000-0470/032
965 Pink Street	E000-0470/033
(no street address)	E000-0470/036
(no street address)	E000-0470/037
(no street address)	E000-0470/038
2403 Carrington Street	E000-0471/001
2411 Carrington Street	E000-0471/007
2413 Carrington Street	E000-0471/008
2415 Carrington Street	E000-0471/009
2417 Carrington Street	E000-0471/010
2419 Carrington Street	E000-0471/011
2421 Carrington Street	E000-0471/012
1116 North 25 th Street	E000-0471/014
1114 North 25 th Street	E000-0471/017
1102 North 25 th Street	E000-0471/018
2438 Venable Street	E000-0471/020
2436 Venable Street	E000-0471/026
2434 Venable Street	E000-0471/027
2432 Venable Street	E000-0471/028
2430 Venable Street	E000-0471/029
2428 Venable Street	E000-0471/030
2426 Venable Street	E000-0471/031
2418 Venable Street	E000-0471/035
1118 North 25 th Street	E000-0471/038
1120 North 25 th Street	E000-0471/039
2407 Venable Street	E000-0472/005A
2415 Venable Street	E000-0473/001
2417 Venable Street	E000-0473/002
2423 Venable Street	E000-0473/004
1006 North 25 th Street	E000-0473/007
1000 North 25 th Street	E000-0473/012

(37) *Valentine Museum and Wickham-Valentine House Old and Historic District (1005-1015 East Clay Street).*

The boundaries of such district are as follows: beginning at the intersection of the south line of East Clay Street and the east line of North Tenth Street; thence in a southerly direction along the east line of North Tenth Street 172.44 feet more or less to the north line extended of an

east-west alley between East Clay Street and East Marshall Street; thence in an easterly direction along said line extended to the west line of North Eleventh Street; thence in a northerly direction 172.44 feet more or less along the west line of North Eleventh Street to the south line of East Clay Street; thence in a westerly direction along the south line of East Clay Street to the point of beginning.

(38) *Virginia House Old and Historic District (4301 Sulgrave Road).*

The boundaries of such district are as follows: beginning at the intersection of the south line of Sulgrave Road and the west line of Arthur's Seat (Wakefield Road extended), thence in a southerly direction 181 feet more or less along the west line of Arthur's Seat to a point on the south line of parcel W022-0385-001 (as assigned by the assessor of the city, as of May 11, 1970, for tax purposes); thence in a westerly direction 184 feet more or less along said property line to a point on the west property line of said parcel; thence in a northerly direction along said property line 221 feet more or less to the south line of Sulgrave Road; thence in an easterly direction along the south line of Sulgrave Road to the point of beginning.

(39) *West Franklin Street Old and Historic District.*

The boundaries of such district are as follows: beginning at the point of intersection of the west line of North Harrison Street and the south line of an east-west alley between West Franklin Street and West Avenue; thence in a westerly direction along the said line to the east line of Birch Street; thence in a northerly direction along the east line of Birch Street to the south line of West Franklin Street; thence in an easterly direction along the south line of West Franklin Street to a point on the west property line extended of parcel W000-0614-025 (as assigned by the assessor of the city, as of November 12, 1990, for tax purposes), said point being 223 feet more or less west of the west line of Ryland Street; thence in a northerly direction along said property line extended to the north line of an alley between West Franklin Street and West Grace Street;

thence in an easterly direction along said line to the west line of North Harrison Street; thence in a southerly direction along the west line of North Harrison Street to the point of beginning.

(40) *West Grace Street Old and Historic District.*

The boundaries of such district are as follows: beginning at the point of intersection of the east line of Ryland Street and the north line extended of an east-west alley between West Broad Street and West Grace Street; thence in a southerly direction along said east line across West Grace Street to the north line extended of an east-west alley between West Grace Street and West Franklin Street/Monument Avenue; thence in a westerly direction along said north line to the west line of a 10-foot north-south private alley, said west line being 90.03 feet more or less east of the east line of North Boulevard; thence in a northerly direction 57.5 feet more or less along said west line to the south line of an east-west private alley; thence in a westerly direction 10.0 feet more or less along said south line to the west property line extended of parcel W000-1210/003 (as assigned by the assessor of the city, as of June 24, 1996, for tax purposes); thence in a northerly direction along said west property line to the south line of West Grace Street; said west property line being 110.78 feet more or less east of the east line of North Boulevard; thence in a northwesterly direction across West Grace Street to the intersection of the north line of West Grace Street and the west property line of parcel W000-1214/046 (as assigned by the assessor of the city, as of June 24, 1996, for tax purposes); said line being 71.67 feet more or less east of the east line of North Boulevard; thence in a northerly direction along said west property line extended to the north line of an east-west alley between West Broad Street and West Grace Street; thence in an easterly direction along said north line extended to the east line of Ryland Street, the point of beginning.

(41) *White House of the Confederacy Old and Historic District (~~1200~~ 1201 East Clay Street).*

The boundaries of such district are as follows: beginning at the intersection of the south

line of East Clay Street and the east line of North Twelfth Street; thence in an easterly direction along the south line of East Clay Street [~~130 feet more or less~~] S 54°09'11" E 101.30 feet to a point; thence in a southerly direction [~~along a line parallel with the east line of North Twelfth Street 132.33 feet more or less~~] S 36°42'02" W 60.35 feet to a point, being a point of curvature; thence [~~in a westerly direction along a line parallel with the south line of East Clay Street~~] along an arc 33.76 feet along a curve deflecting to the right with a radius of 20.00 feet, a central angle of 96°42'56", and a chord bearing and distance of S 85°03'28" W 29.89 feet, to a point; thence S 36°30'32" W 42.82 feet to a point, thence N 53°29'28" W 2.97 feet; thence S 36°40'52" W 5.51 feet to a point; thence N 53°19'08" W 48.15 feet to a point; thence S 36°21'23" W 5.42 feet to a point; thence in a westerly direction N 53°07'02" W 27.51 feet to a point lying on the [~~west~~] east line of North Twelfth Street[~~, said point being 132.33 feet south of the south line of East Clay Street~~]; thence in a northerly direction along the east line of North Twelfth Street N 36°29'04" E 132.40 feet to the point of beginning.

(42) *Wilton Old and Historic District (215 South Wilton Road).*

The boundaries of such district are as follows: beginning at a point on the southern terminus line of South Wilton Road, said point being 30 feet more or less east of the terminus of the west line of South Wilton Road, said point also being at the west property line of parcel W022-0127-001 (as assigned by the assessor of the city, as of April 15, 1985, for tax purposes); thence in an easterly direction along the southern terminus line of South Wilton Road and the north property line of said parcel extended 230 feet more or less to a point on the east property line of said parcel; thence in a southerly direction along said property line 458 feet more or less to a point on the south property line of said parcel; thence in a westerly direction along said property line to a point on the west property line of said parcel; thence in a northerly direction along said property line 428.50 feet more or less to the point of beginning.

(43) *Joseph P. Winston House Old and Historic District (103 East Grace Street).*

The boundaries of such district are as follows: beginning at the intersection of the east line of North First Street and the south line of East Grace Street; thence in an easterly direction along the south line of East Grace Street 64 feet more or less to the east property line of parcel W000-0063-002 (as assigned by the assessor of the city, as of March 23, 1987, for tax purposes); thence in a southerly direction along said property line to a point on the south line of an east-west alley between East Grace Street and East Franklin Street, said point being 64 feet more or less east of the east line of North First Street; thence in a westerly direction along said line to the east line of North First Street; thence in a northerly direction along the east line of North First Street to the point of beginning.

(44) *Woodward House-Rocketts Old and Historic District (3017 Williamsburg Avenue).*

The boundaries of such district are as follows: beginning at the intersection of the north line of East Main Street with the south line of Williamsburg Avenue; thence in an easterly direction along the south line of Williamsburg Avenue 834.06 feet more or less to a point on the east property line of parcel E000-0584-001 (as assigned by the assessor of the city, as of January 9, 1978, for tax purposes); thence in a southerly direction along said property line 35.83 feet more or less to the Southern Railway right-of-way; thence in a westerly direction along the Southern Railway right-of-way to a point; thence in a northerly direction along said right-of-way 49.30 feet more or less to a point; thence in a westerly direction along said right-of-way 148 feet more or less to the north line of East Main Street; thence in a northwesterly direction along the north line of East Main Street 96.24 feet more or less to the point of beginning.

(45) *Zero Blocks East and West Franklin Street Old and Historic District.*

The boundaries of such district are as follows: beginning at the point of intersection of the south line of West Main Street and the west line of North Adams Street; thence in a northerly

direction along the west line of North Adams Street to the north line extended of a 15.16-foot east-west alley between West Franklin Street and West Grace Street; thence in an easterly direction along said line extended to the east line of North Foushee Street; thence in a northerly direction along the east line of North Foushee Street 64.50 feet more or less to the south line of a 10-foot east-west alley south of East Grace Street; thence in an easterly direction along said line 60.67 feet more or less to the east property line of parcel W000-0083-026 (as assigned by the assessor of the city, as of March 23, 1987, for tax purposes); thence in a southerly direction along said property line and the east property line of parcel W000-0083-024 (as assigned by the assessor of the city, as of March 23, 1987, for tax purposes) to the north line of a 14.59-foot east-west alley between East Franklin Street and East Grace Street; thence in an easterly direction along said line 137.61 feet more or less to the west property line of parcel W000-0083-010 (as assigned by the assessor of the city, as of March 23, 1987, for tax purposes); thence in a northerly direction along said property line to the south line of East Grace Street; thence in an easterly direction along the south line of East Grace Street to the east line of North First Street; thence in a southerly direction along the east line of North First Street to the south line of East Main Street; thence in a westerly direction along the south line of East Main Street to the point of beginning; but excepting from the above-described land, two parcels known, numbered and designated as 1 and 3 East Franklin Street, said parcels being more particularly described as follows: 1 East Franklin Street: beginning at the point of intersection of the eastern line of Foushee Street with the southern line of Franklin Street; thence extending along the southern line of Franklin Street south 53 degrees 00 minutes east 35.62 feet to a cross in the pavement on the southern line of Franklin Street; thence extending south 37 degrees 16 minutes west 156.88 feet to a rod on the north line of an alley 16 feet, more or less, in width; thence extending along the northern line of the aforesaid alley north 52 degrees 55 minutes 24 seconds west 34.93 feet to a

spike at the intersection of the north line of the aforesaid alley and the eastern line of Foushee Street; thence extending along the eastern line of Foushee Street north 37 degrees 00 minutes 45 seconds east 156.83 feet to the point and place of beginning; 3 East Franklin Street: beginning at a spike on the southern line of Franklin Street, said spike being south 53 degrees 00 minutes east a distance of 67.79 feet from the point marking the intersection of the southern line of Franklin Street and the eastern line of Foushee Street; thence extending south 37 degrees 21 minutes 20.00 seconds west 156.92 feet to a rod on the northern line of an alley 16 feet, more or less, in width; thence extending along the northern line of the aforesaid alley north 52 degrees 55 minutes 24 seconds west 31.92 feet to a rod on the northern line of the aforesaid alley; thence extending north 37 degrees 16 minutes east 156.88 feet to a point on the southern line of Franklin Street, which point is marked by a cross in the pavement; thence extending along the southern line of Franklin Street south 53 degrees 00 minutes east 32.17 feet to a spike marking the point and place of beginning.

§ 2. This ordinance shall be in force and effect upon adoption.

City of Richmond

900 East Broad Street
2nd Floor of City Hall
Richmond, VA 23219
www.richmondgov.com

Item Request

File Number: PRE.2018.187

RECEIVED

MAY 16 2018

OFFICE OF CITY ATTORNEY

O & R REQUEST

MAY 2 2018

Office of the
Chief Administrative Officer

O & R Request

DATE: May 1, 2018

EDITION: 1

TO: The Honorable Members of City Council

THROUGH: The Honorable Levar M. Stoney, Mayor *JS 5/16/18*
(This is no way reflects a recommendation on behalf of the Mayor.)

THROUGH: Selena Cuffee-Glenn, Chief Administrative Officer *SCG*

THROUGH: Peter L. Downey, Deputy Chief Administrative Officer for Economic Development and Planning *PLD*

FROM: Mark A. Olinger, Director, Department of Planning and Development Review *MAO*

RE: To amend Sec. 30-930.5(41) regarding the White House of the Confederacy Old and Historic District (1200 East Clay Street), to remove a portion of the property from the district.

ORD. OR RES. No. _____

PURPOSE: To amend Sec. 30-930.5(41) regarding the White House of the Confederacy Old and Historic District (1200 East Clay Street), to remove a portion of the property from the district.

REASON: The Confederate Memorial Literary Society and the Virginia Commonwealth University Health System Authority have requested the removal of 1222 East Marshall Street (Tax Parcel No. E000-0208/020) from the White House of the Confederacy City Old and Historic District.

RECOMMENDATION: In accordance with the requirements of the City Charter and the Zoning Ordinance, the City Planning Commission will review this request and make a recommendation to City Council. This item will be scheduled for consideration by the Commission at its June 18, 2018, meeting. A letter outlining the Commission's recommendation will be forwarded to City Council following that meeting.

BACKGROUND: In June 2017, the Confederate Memorial Literary Society subdivided their property and transferred a portion, 1222 East Marshall Street, to the Virginia Commonwealth University Health System Authority. This parcel contains the Museum of the Confederacy building constructed in 1976. The

Confederate Memorial Literary Society retained a portion of the property, 1201 East Clay Street (Tax Parcel No. E000-0208/015), containing the White House of the Confederacy, built in 1818, and the related garden. A negative easement located at 1222 East Marshall Street was also established, and would remain within the old and historic district.

Both parcels are currently located in the White House of the Confederacy Old and Historic District, created in 1970. Ordinance No. 70-111 created eleven (11) single structure historic districts all of which were considered to be of "historical or architectural interest." Per City Code section 30-930.2, "the purpose of creating old and historic districts is to provide a means by which the city council may recognize and protect the historic, architectural, cultural, and artistic heritage of the city."

The property is located within the Virginia Commonwealth University Medical College of Virginia Campus in an area zoned B-4 - Central Business District. The City's Master Plan recommends institutional land use for the subject property and surrounding properties.

FISCAL IMPACT / COST: The Department of Planning and Development Review does not anticipate any impact to the City's budget for this or future fiscal years.

FISCAL IMPLICATIONS: Staff time for processing the request; preparation of draft ordinance; and publishing, mailing and posting of public notices.

BUDGET AMENDMENT NECESSARY: No.

REVENUE TO CITY: None.

DESIRED EFFECTIVE DATE: Upon Adoption.

REQUESTED INTRODUCTION DATE: May 29, 2018

CITY COUNCIL PUBLIC HEARING DATE: June 25, 2018

REQUESTED AGENDA: Regular

RECOMMENDED COUNCIL COMMITTEE: None.

CONSIDERATION BY OTHER GOVERNMENTAL ENTITIES: City Planning Commission, June 18, 2018

AFFECTED AGENCIES: Office of Chief Administrative Officer
Law Department (for review of draft ordinance)
City Assessor (for preparation of mailing labels for public notice)

RELATIONSHIP TO EXISTING ORD. OR RES.: Amendment of Zoning Code Sec. 30-930.5(41)

REQUIRED CHANGES TO WORK PROGRAM(S): None.

ATTACHMENTS: Request Letters and Exhibit Plats, Draft Zoning Text Amendment, Map

STAFF: Kimberly Chen, Principal Planner
Planning and Preservation Division, 646-6364

HUNTON ANDREWS KURTH

HUNTON ANDREWS KURTH LLP
RIVERFRONT PLAZA, EAST TOWER
951 EAST BYRD STREET
RICHMOND, VIRGINIA 23219-4074

TEL 804 • 788 • 8200
FAX 804 • 788 • 8218

DANIEL M. CAMPBELL
DIRECT DIAL: 804 • 788 • 8503
EMAIL: dcampbell@HuntonAK.com

FILE NO: 53079.000157

April 20, 2018

By E-Mail Only

Ms. Kimberly Chen
Principal Planner, Division of Planning and Preservation
Department of Planning and Development Review
City of Richmond
900 E. Broad St., Room 510
Richmond, VA 23219
kimberly.chen@richmondgov.com

Amendment of White House of the Confederacy Old & Historic District (the "District")

Dear Ms. Chen:

This firm represents the VCU Health System Authority (the "Authority"). As you know, the current boundaries of the above-referenced District encompass a portion of the Authority's real property at 1222 East Clay Street (the "Authority Parcel"), together with all of the neighboring property owned by the Confederate Memorial Literary Society ("CMLS") at 1201 East Clay Street (the "CMLS Parcel"). The Authority Parcel was created out of the CMLS Parcel via a 2017 lot split.

CMLS and the Authority have agreed to pursue an amendment to the District's boundaries to encompass only the CMLS Parcel. Please accept this letter as evidence of the Authority's consent to CMLS's February 23, 2018 letter requesting such an amendment, a copy of which letter is attached hereto as Exhibit A.

Please let me know if you have any questions regarding this letter or if you need any further evidence of the Authority's consent to CMLS's request to amend the District boundaries.

Sincerely yours,



Daniel M. Campbell

cc: Paul C. Neimeyer, Esq.
R. Robert Benaicha, Esq.

EXHIBIT A

February 23, 2018 Letter from CMLS Requesting District Amendment

[SEE ATTACHED]

McGuireWoods LLP
Gateway Plaza
800 East Canal Street
Richmond, VA 23219-3916
Phone: 804.775.1000
Fax: 804.775.1061
www.mcguirewoods.com

R. Robert Benaicha
Direct: 804.775.1152

McGUIREWOODS

rbenacha@mcguirewoods.com
Fax: 804.698.2067

February 23, 2018

By Hand and E-mail

Mr. Mark Olinger
Director
Department of Planning and Development Review
City of Richmond
900 E. Broad St., Room 510
Richmond, VA 23219

Amendment of White House of the Confederacy Old & Historic District

Dear Mark:

On behalf of the Confederate Memorial Literary Society (the "Society") and its sole member, the American Civil War Museum ("ACWM"), I am writing to request an amendment of the boundaries of the White House of the Confederacy Old and Historic District (1200 East Clay Street) (the "District").¹

This amendment would remove from the District 40% of the footprint of the Museum of the Confederacy building (the "Museum"), which lies to the south and east of the historic White House of the Confederacy building and its gardens (collectively, the "White House"). The White House would remain protected within the District, leaving the District's animating purpose unaffected.

I. Background

The District was created in 1970 to protect the White House under the City's Old and Historic District regulations found at City Code § 30-930 *et seq.* (the "O&H Ordinance"). The O&H Ordinance's purpose is to promote "the general welfare...of the City" through the "identification, preservation and enhancement of buildings, structures, landscapes, settings, neighborhoods, sites and features with special historic, cultural, artistic, and architectural significance."² The White House was built in 1818 and is listed on the National Register of Historic Places and the Virginia Landmarks Register. It is unquestionably "historic" under the O&H Ordinance's definition since it "pertains to [a period] of development, events, persons, or activities of importance in the history of the City, the Commonwealth, [and] the United States of America."³ Beyond being the District's namesake, the White House is quite clearly the District's reason for being.

¹ See City Code § 30-930.5.

² City Code § 30-930.2.

³ City Code § 30-930.1.

The District's current extent is outlined in red on the Exhibit Plat attached hereto as Exhibit 1.⁴ Since its 1970 enactment the District's boundaries have matched those of the White House's original parcel, acquired by the Society in 1894 (the "1894 Tract"). The part of the District the Society seeks to have removed (the "Excess Area") is marked on Exhibit 1 with horizontal lines and labeled "Portion of Current White House of the Confederacy Old and Historic District to be Removed (Conveyed to VCUHSA in 2017)".

Until last year the Society also owned two additional parcels located just to the east and south of the 1894 Tract (collectively, the "Outside Tracts"), neither of which were ever included in the District.⁵ The Society acquired one of the Outside Tracts in 1962 (before the District's creation), and the other in 1973.

The Museum was built around 1974, after the District's enactment. The Museum's footprint straddles the boundary between the Excess Area and the Outside Tracts, and only about 40% of its footprint is within the District.

On June 30, 2017, the Society recorded the Lot Split Plat attached hereto as Exhibit 2 to carve out of the 1894 Tract both the Excess Area and the area on Exhibit 1 labeled "Negative Easement Area" (collectively, the "New Tract"), and then sold the New Tract, together with the Outside Tracts, to the VCU Health System Authority (the "Authority").⁶ The Society retained the western portion of the 1894 Tract on which the White House is located (the "Retained Parcel") as well as easements over the Negative Easement Area which give the Society a veto over any new construction therein.

ACWM is currently constructing a new, state-of-the-art museum facility at Historic Tredegar that will be a showcase for the City and further ACWM's mission of being the preeminent center for the exploration of the American Civil War. Most of the exhibits and artifacts housed at the Museum will be moved to ACWM's new facility.

II. Request

The Society hereby requests that the District's boundary be amended to remove the Excess Area from the District. The amended District would encompass the Retained Parcel and the Negative Easement Area and is depicted on Exhibit 1 as the area labeled "Proposed New Boundary of White House of the Confederacy Old and Historic District".

This amendment would conform the District's boundary to its sole original intended purpose: preservation of the White House. Unlike other districts enacted under the O&H Ordinance, which in many cases cover several city blocks, the District has always covered one discrete parcel containing only the White House. The District was named after the White House. Its boundaries even omitted one of the Outside Tracts owned by the Society at the time of the District's enactment, most likely because that parcel was not integral to the White House

⁴ Please note that the City's GIS maps do not reflect the District's correct boundary as set forth in the O&H Ordinance and shown on Exhibit 1.

⁵ The Outside Tracts are depicted on Exhibit 1 as the cross-hatched areas labeled "Portion of Former CMLS Parcel Lying Outside Old and Historic District (Conveyed to VCUHSA in 2017)".

⁶ The Authority, whose counsel is copied on this letter, has consented to this amendment request.

Mr. Mark Olinger
Amendment of White House of the Confederacy Old & Historic District
February 23, 2018
Page 3

or its preservation. Quite simply, the White House's preservation is the only purpose that can be inferred from the City's enactment of the District in its present configuration.

The amendment would not detract from the District's mission of preserving the White House. The Excess Area already houses a portion of the Museum, which is a two-story, late-20th century modern concrete-block structure. Given the fact that the Museum and other large, non-historic buildings already surround the White House, removing the Excess Area from the District would not result in any material change in the White House's situation. The retention of the Negative Easement Area in the proposed new District boundary will preserve the spatial relationship between the White House and neighboring structures.

For the foregoing reasons, we believe City Council should adopt an ordinance and resolution amending the District's boundaries as set forth in City Code § 30-930.5(41) to conform to the surveyed metes and bounds of the Retained Parcel and Negative Easement Area set forth on the attached Exhibit 3.

Please let me know if you have any questions or need any additional information.

Sincerely,



R. Robert Benaicha

Enclosures

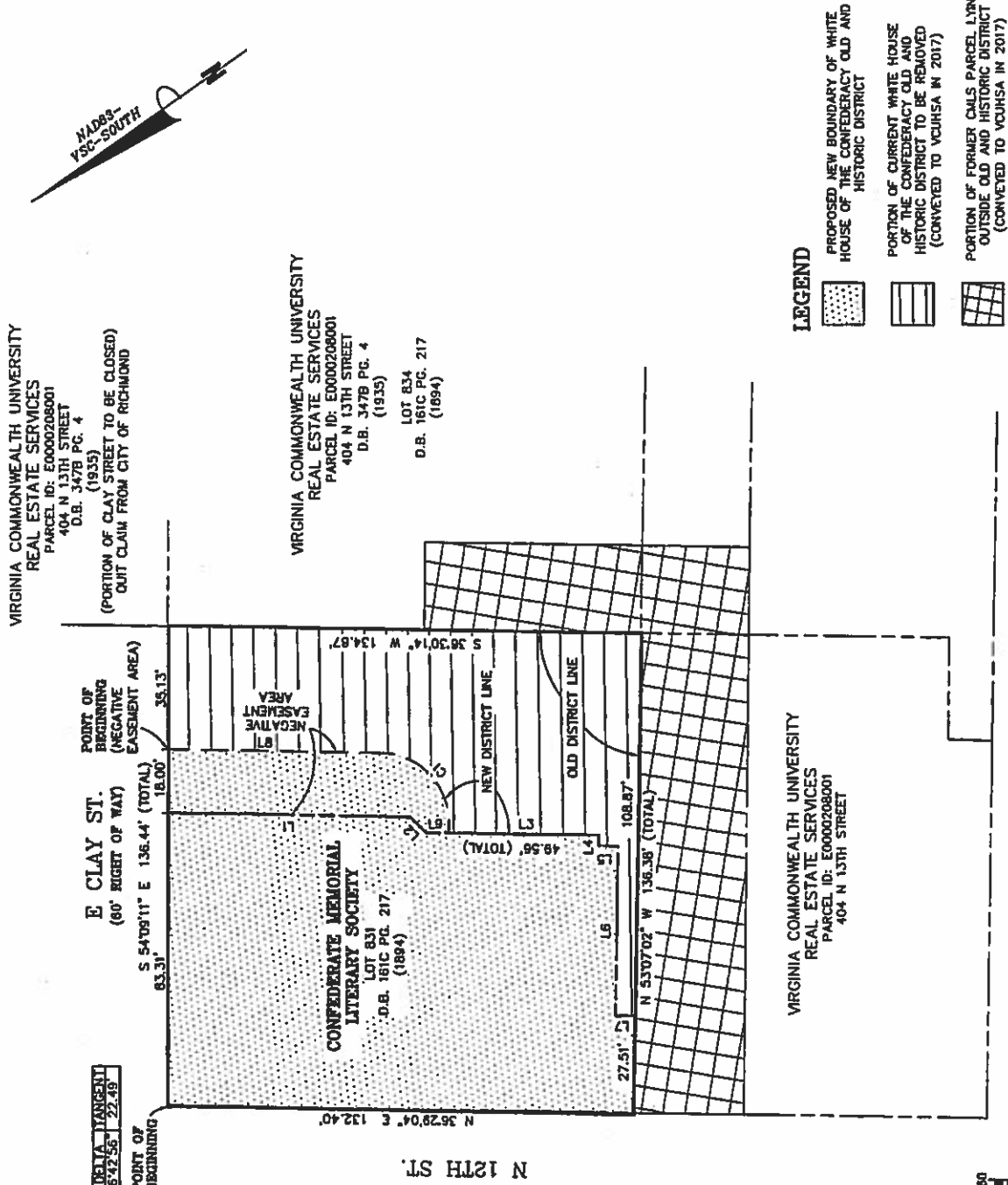
cc: Daniel E. Campbell, Esq. (by email only)
Donald E. King, Esq. (by email only)

Mr. Mark Olinger
Amendment of White House of the Confederacy Old & Historic District
February 22, 2018

EXHIBIT 1

Exhibit Plat

[ATTACHED]



CURVE TABLE

CI	CURVE RADIUS	LENGTH	BEARING	CHORD	DELTA	TANGENT
1	20.00'	33.76'	S 85°03'28"	W 23.89'	86°42'56"	22.49'

LINE TABLE

LINE	BEARING	INSTANCE
L1	S 35°43'02"	W 64.56'
L2	S 79°53'58"	W 6.37'
L3	S 35°30'32"	W 42.82'
L4	N 53°20'28"	W 9.07'
L5	S 35°40'52"	W 5.51'
L6	N 33°19'06"	W 48.15'
L7	S 35°21'28"	W 5.22'
L8	S 35°43'02"	W 60.16'
L9	N 35°30'32"	E 6.74'

VIRGINIA COMMONWEALTH UNIVERSITY
HEALTH SCIENCES SERVICES
PARCEL ID: E0000207012
1150 E MARSHALL STREET



Mr. Mark Olinger
Amendment of White House of the Confederacy Old & Historic District
February 22, 2018

EXHIBIT 2

Lot Split Plat

[ATTACHED]

NOTES

1. THE SURVEYED PROPERTY DELINEATED HERON (IS LOCATED IN THE CITY OF RICHMOND AS PARCEL ID: E0000208015 AND IS ZONED B-4 (CENTRAL BUSINESS).
2. THE SURVEYED PROPERTY IS CURRENTLY IN THE NAME OF CONFEDERATE MEMORIAL LITERARY SOCIETY AND IS RECORDED DEED BOOK 615B, PAGE 217, DEED BOOK 615B, PAGE 497, DEED BOOK 687D, PAGE 413 AMONG THE LAND RECORDS OF THE CITY OF RICHMOND, VIRGINIA.
3. BOUNDARY INFORMATION AS SHOWN HERON IS BASED ON DEED BOOK 161C, PAGE 217, DEED BOOK 387B, PAGE 4, DEED BOOK 615B, PAGE 497, DEED BOOK 687D, PAGE 410, AND DEED BOOK 687D, PAGE 413 AMONG THE LAND RECORDS IN THE CIRCUIT COURT OF THE CITY OF RICHMOND, VIRGINIA.
4. THIS PLAT WAS MADE WITH THE BENEFIT A TITLE COMMITMENT PROVIDED BY FIRST AMERICAN TITLE INSURANCE COMPANY, COMMITMENT NO. 17-12915, WITH AN EFFECTIVE DATE OF FEBRUARY 17, 2017.
5. THE SURVEYED PROPERTY SHOWN HERON LIES IN ZONE "X" (AREAS DETERMINED TO BE OUTSIDE THE 0.2% ANNUAL CHANCE FLOODPLAIN) AS SHOWN ON FEMA FLOOD INSURANCE RATE MAP FOR THE CITY OF RICHMOND, VIRGINIA COMMUNITY-PANEL NUMBER 5101290041E, EFFECTIVE DATE JULY 16, 2014.
6. NORTH VEIRERIAN INFORMATION AS SHOWN HERON IS BASED ON GPS CHOLS SOLUTIONS AND IS MAJORS VIRGINIA STATE COORDINATE SYSTEM, SOUTH ZONE.
7. THIS SURVEY WAS PRODUCED FROM AN ACTUAL FIELD SURVEY PERFORMED BY BOWMAN CONSULTING ON MARCH 8, 2017.

EASEMENT LEGEND

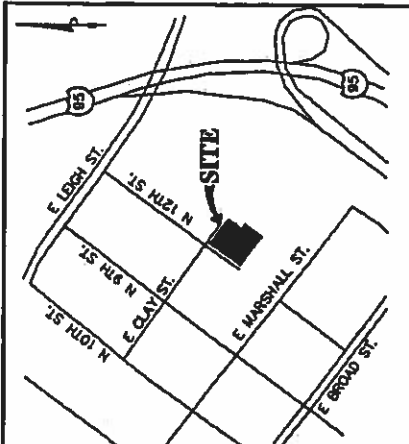
[Symbol]	PROPOSED EASEMENT AREA
[Symbol]	PROPOSED UNBUILDABLE AREA

LINE TABLE

LINE	BEARING	DISTANCE
1	S 89°07'00" E	2.21
2	N 89°07'00" E	2.21
3	S 89°07'00" E	2.21
4	N 89°07'00" E	2.21
5	S 89°07'00" E	2.21
6	N 89°07'00" E	2.21

APPROVED BY THE CITY OF RICHMOND PLANNING COMMISSION AND/OR DIRECTOR OF PLANNING

DATE: _____ ACTING SECRETARY/AGENT



VICINITY MAP
SCALE: 1" = 400'

- LEGEND**
- ☉ LAMP POST
 - ⊙ SIGN
 - ⊙ TELEPHONE MARKER
 - ⊙ GAS VALVE
 - ⊙ SANITARY CLEANOUT
 - ⊙ STORM MANHOLE
 - ⊙ STORM MANHOLE
 - ⊙ WATER VALVE
 - ⊙ FIRE HYDRANT
 - ⊙ WATER STRUCTURE
 - ⊙ CONC. CONCRETE
 - ⊙ H/C HANDICAP RAMP
 - ⊙ FENCE
 - ⊙ CURB
 - ⊙ IPS IRON PIPE SET

AREA TABULATION

TOTAL CPW E0000208015	24,807 SF.	0.5684 AC.
YOU HEALTH SRS. AUTH.	14,316 SF.	0.3288 AC.
CONFED. MEM. LIT. SOC.	10,490 SF.	0.2396 AC.
TOTAL PLAT	24,807 SF.	0.5684 AC.

CONFEDERATE MEMORIAL LITERARY SOCIETY

ON THE PROPERTY OF
PLAT SHOWING
LOT SPLIT

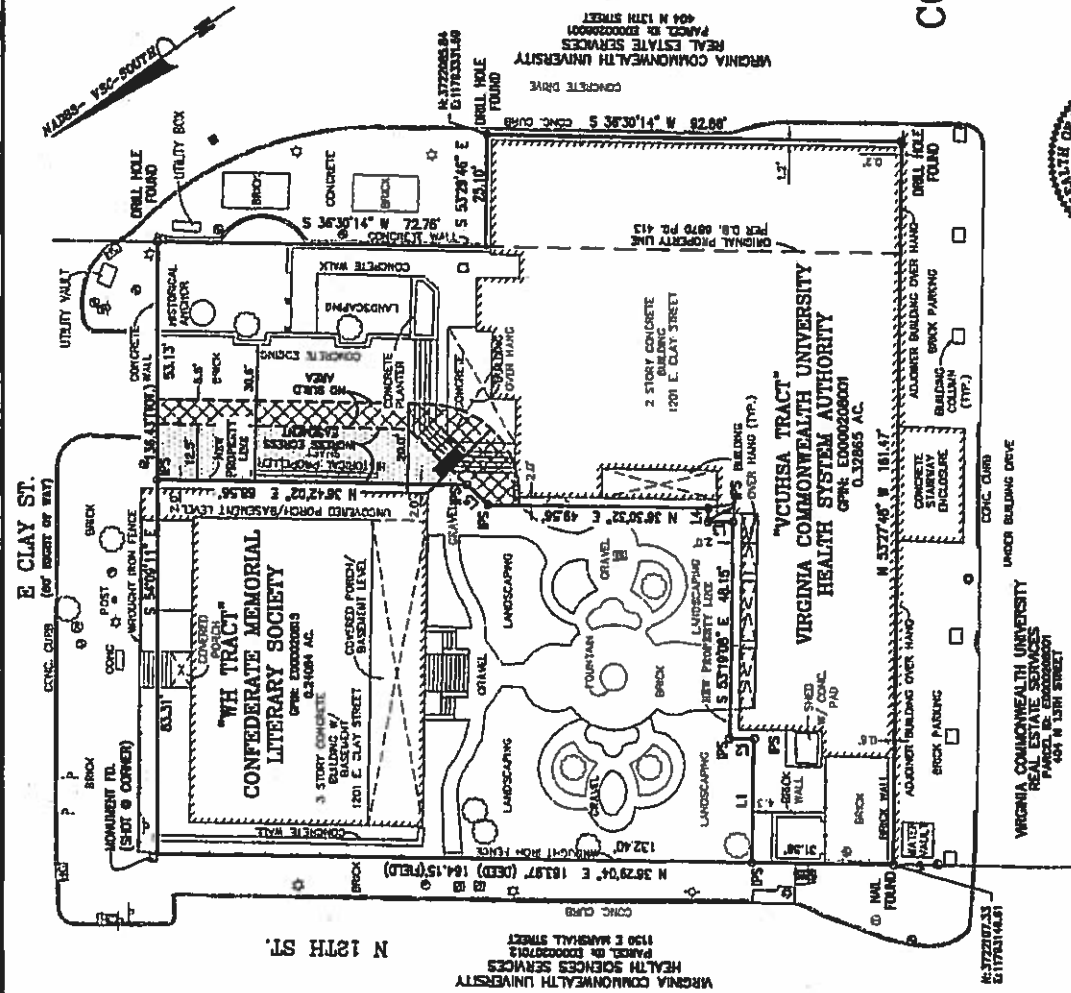
PARCEL ID: E0000208015
DEED BOOK 161C, PAGE 217
DEED BOOK 615B, PAGE 497
DEED BOOK 687D, PAGE 413
CITY OF RICHMOND
HENRICO COUNTY, VIRGINIA

DATE: MAY 19, 2017
SCALE: 1" = 20'

Bowman CONSULTING

1000 W. MAIN ST., SUITE 100, RICHMOND, VA 23220
703.351.1111
www.bowmanconsulting.com

DATE: MAY 19, 2017
SCALE: 1" = 20'



SURVEYOR'S CERTIFICATE

TO THE BEST OF MY KNOWLEDGE AND BELIEF, ALL OF THE REQUIREMENTS AS SET FORTH IN THE ORDINANCE FOR APPROVING PLATS OF SUBDIVISIONS FOR RECORDATION IN THE CITY OF RICHMOND, VIRGINIA, HAVE BEEN COMPLIED WITH. MONUMENTS WILL BE SET BY JUNE 17, 2017.

BY: CRAIG S. MACULAY, LS (LIC. NO. 3124)
BOWMAN CONSULTING GROUP, LTD.

RECORDED _____ PLAT BOOK: _____ PAGE: _____

Mr. Mark Olinger
Amendment of White House of the Confederacy Old & Historic District
February 22, 2018

EXHIBIT 3

Surveyed Description of Proposed Amended District Boundary

BEGINNING AT THE INTERSECTION OF THE SOUTH LINE OF EAST CLAY STREET AND THE EAST LINE OF NORTH TWELFTH STREET; THENCE RUNNING IN AN EASTERLY DIRECTION ALONG THE SOUTH LINE OF EAST CLAY STREET S 54°09'11" E 101.30 FEET TO A POINT; THENCE RUNNING IN A SOUTHERLY DIRECTION S 36°42'02" W 60.35 FEET TO A POINT, BEING A POINT OF CURVATURE; THENCE ALONG AN ARC 33.76 FEET ALONG A CURVE DEFLECTING TO THE RIGHT WITH A RADIUS OF 20.00 FEET, A CENTRAL ANGLE OF 96°42'56", AND A CHORD BEARING AND DISTANCE OF S 85°03'28" W 29.89 FEET, TO A POINT; THENCE S 36°30'32" W 42.82 FEET TO A POINT; THENCE N 53°29'28" W 2.97 FEET TO A POINT; THENCE S 36°40'52" W 5.51 FEET TO A POINT; THENCE N 53°19'08" W 48.15 FEET TO A POINT; THENCE S 36°21'23" W 5.42 FEET TO A POINT; THENCE RUNNING IN A WESTERLY DIRECTION N 53°07'02" W 27.51 FEET TO A POINT LYING ON THE EAST LINE OF NORTH TWELFTH STREET; THENCE RUNNING IN A NORTHERLY DIRECTION ALONG THE EAST LINE OF NORTH TWELFTH STREET N 36°29'04" E 132.40 FEET TO THE POINT OF BEGINNING.