

2017-
2020



Regional Plan for School Readiness

Richmond City Council
Monday, July 24 , 2017




Who We Are

Smart Beginnings Greater Richmond is a partnership of public and private organizations, businesses and individuals serving the cities of Richmond and Colonial Heights, as well as Charles City, Chesterfield, Goochland, Hanover, Henrico, New Kent, and Powhatan counties.



What We Do

A close-up photograph of a young child with curly hair, wearing a blue and white plaid shirt, looking intently at a smartphone held by an adult. The adult's hands are visible, holding the phone. The background is blurred, suggesting an outdoor setting. The image has a blue tint.

The mission of Smart Beginnings Greater Richmond is to lead the transformation of the early childhood system by building regional partnerships and capacity for change.

Why Early Childhood?

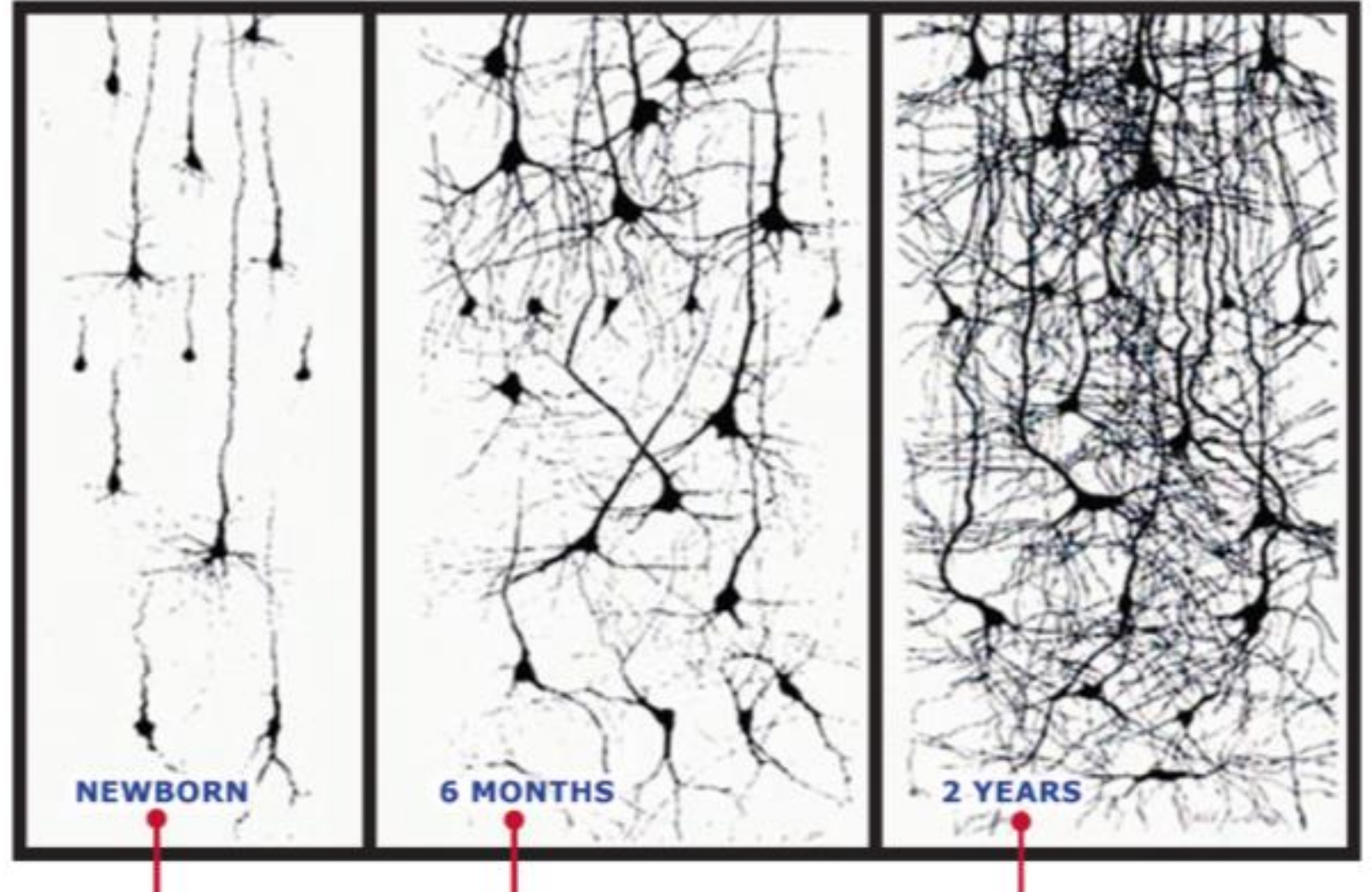
"Early childhood development is perhaps the strongest investment we could make on a raw return-on-investment basis."

James Heckman

Nobel Laureate in Economics

Brain Architecture

More Than 1 Million New Neural Connections Per Second

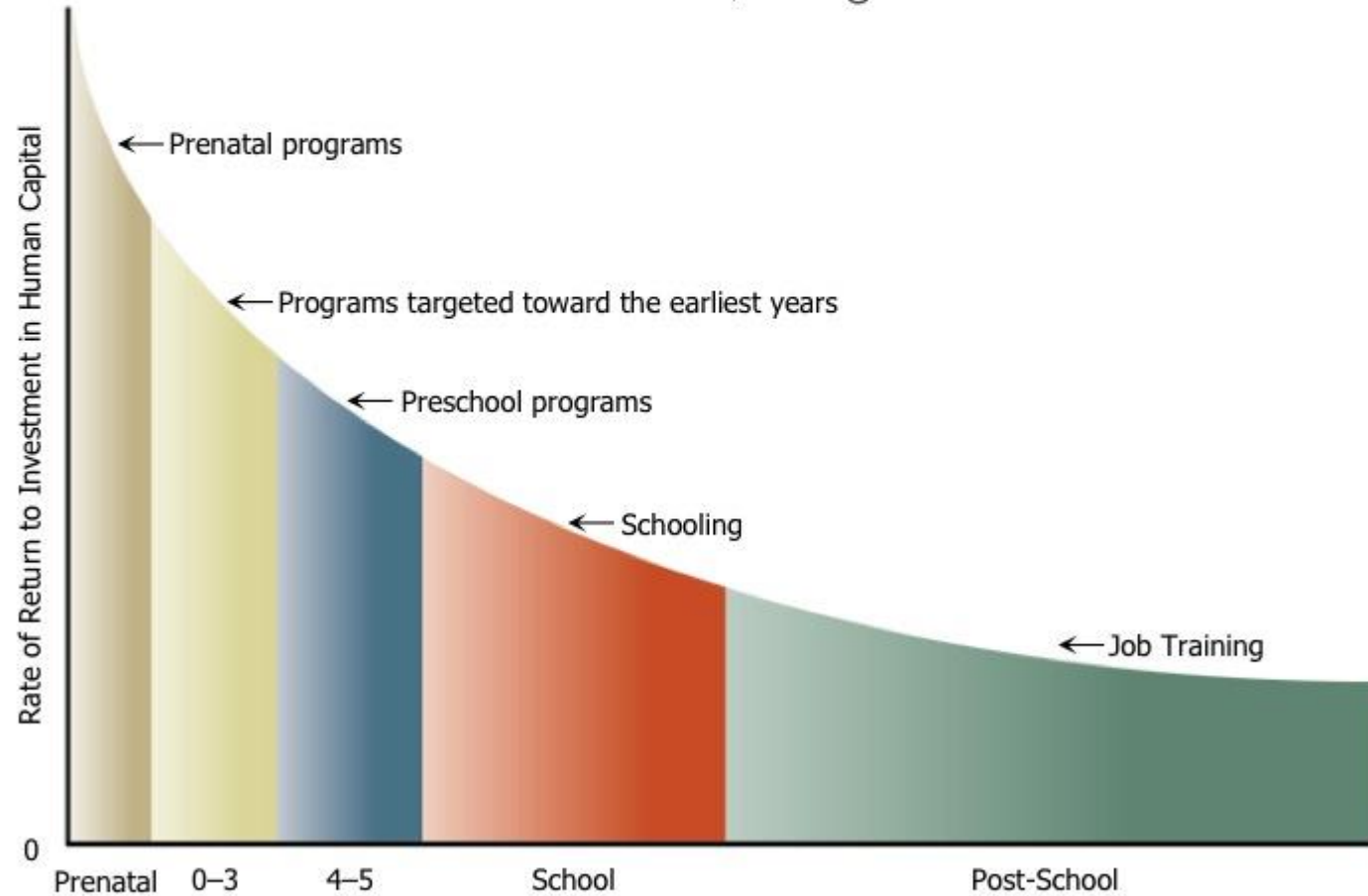


Source: Center on the Developing Child, Harvard University

Return on Investment

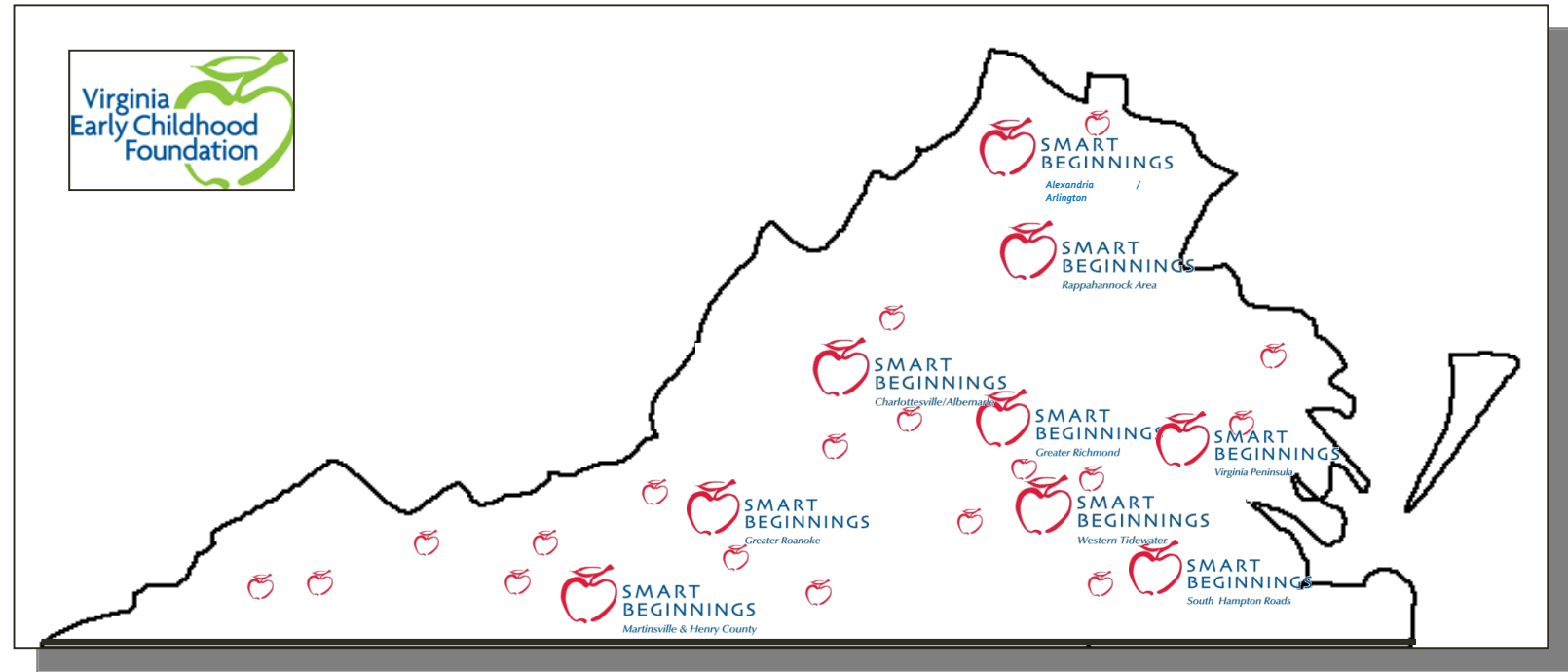
EARLY CHILDHOOD DEVELOPMENT IS A SMART INVESTMENT

The earlier the investment, the greater the return

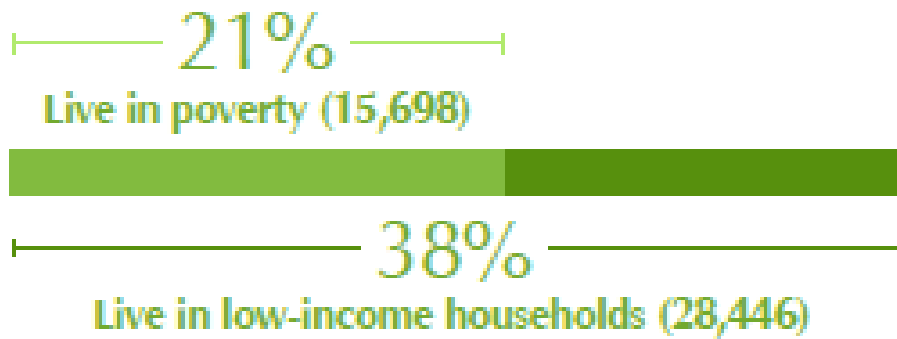


Source: James Heckman, Nobel Laureate in Economics

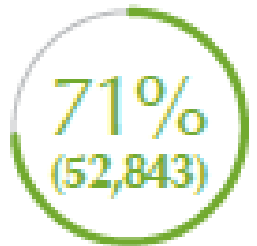
History of Collaboration



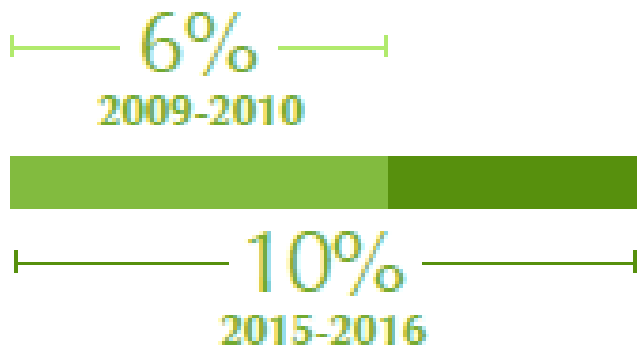
Children 0-5 in Low-Income Families



Children 0-5 with All Parents Working

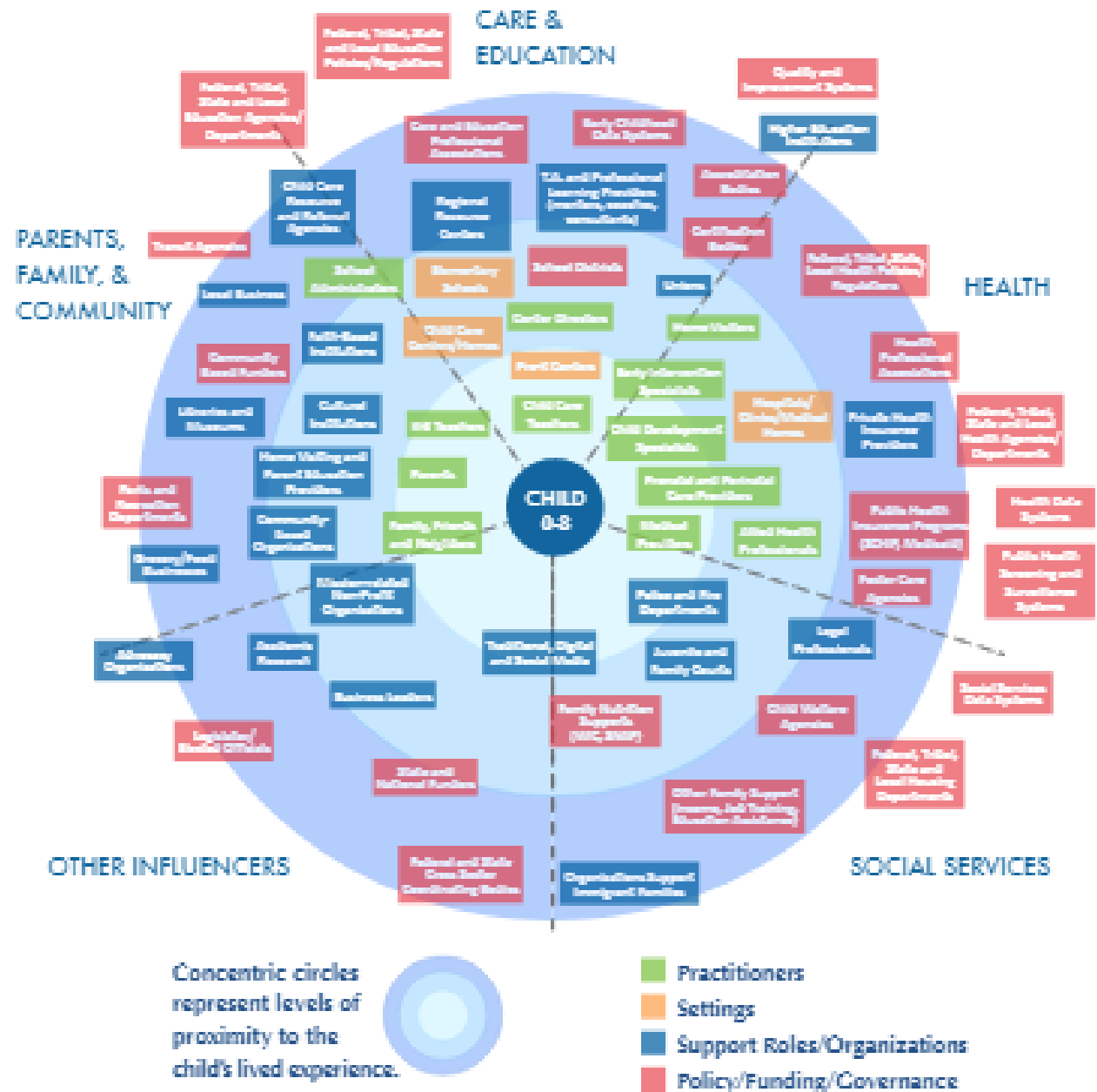


Increase in Hispanic Students



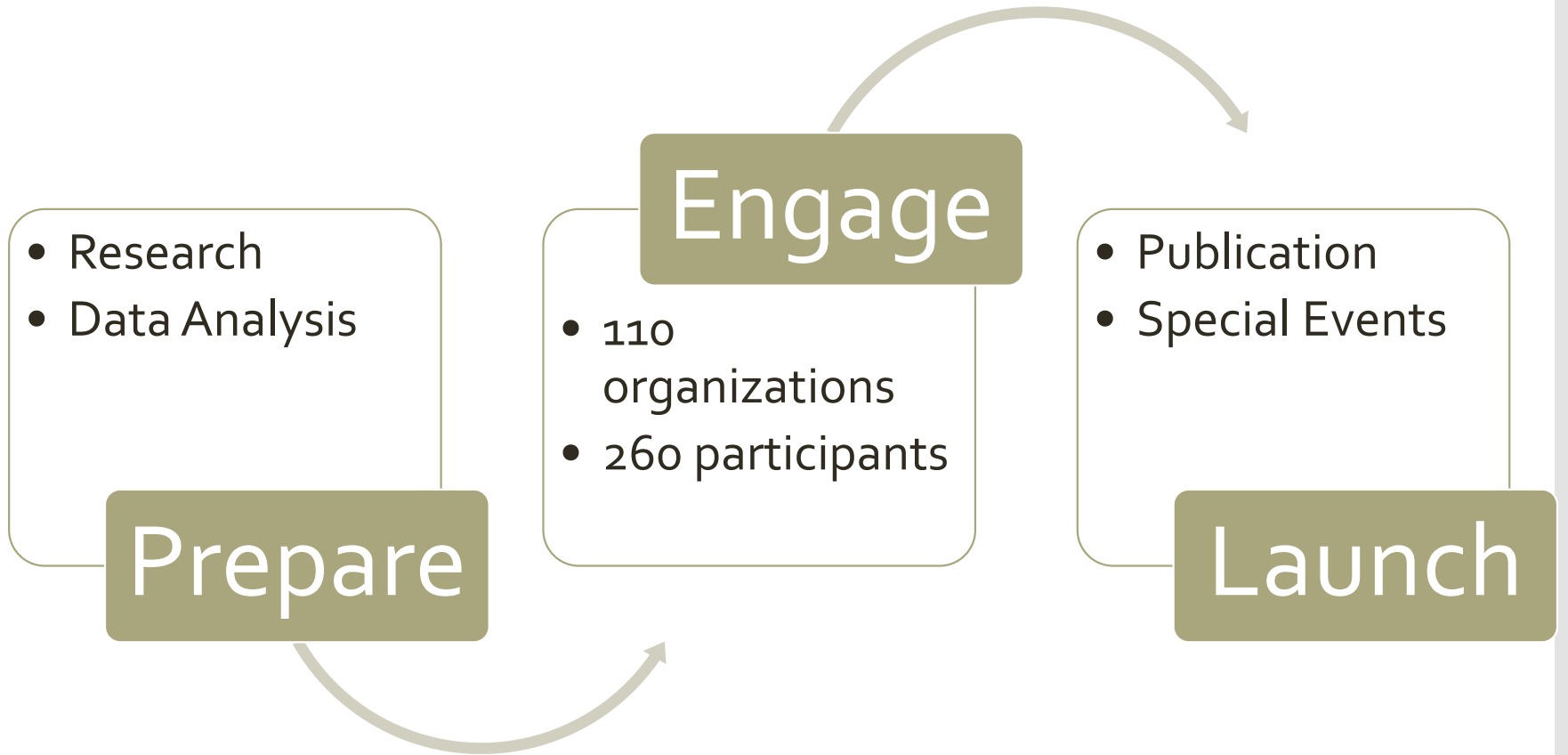
Why Is the Need Urgent?

Complex Systems



Source: Source: Boccalatte, Valerie, Copp, Srikanth and Wilks, Matt. "Improving the Odds: Seven Principles for Investing in Early Care and Education." PSC Reimagining Social Change, p. 6."

Regional Planning Process





The Regional Plan for School Readiness

Vision

All children from birth through five in the Richmond region will be healthy, well-cared for, and ready to succeed in school, work and in life.

Core Values

Equity.

We believe that all children and families should have the opportunity to thrive.

Family.

We partner with families to promote a child's healthy development.

Partnership.

We accomplish more together.

Quality.

We strive to achieve transformational impact in a child's life.

Responsibility.

We are accountable for our actions and investments.

Goal One: Greater Awareness and Enrollment

Increase awareness of the importance of early childhood and accelerate enrollment in high-quality programs for families with young children.



1 Goal One Greater Awareness and Enrollment

Increase awareness of the importance of early childhood and accelerate enrollment in high-quality programs for families with young children.

Strategies

- 1.1. Communicate the importance of the early years of life and the value of quality early childhood programs to families and stakeholders.
- 1.2. Increase referrals and successful enrollment into quality early childhood programs.
- 1.3. Engage families with young children in shaping regional policy and practice.

Success Measures

- Increase in number of families participating in designing regional communications and outreach strategies by 2017.
- Establish a baseline and method for measuring awareness and understanding of quality early childhood programs by 2017.
- Establish a baseline and set targets for enrollment in quality early care and education programs and public preschool by 2018.
- 10% increase in families and young children served by early intervention programs by 2019.
- Double the number of families and young children served by home visiting programs by 2020.

Goal Two: Collaborative and Intentional Pathways

Enhance collaborative and intentional pathways between schools and public and private programs serving families with young children to improve access and customer service.

2 Goal Two Collaborative and Intentional Pathways

Enhance collaborative and intentional pathways between schools and public and private programs serving families with young children to improve access and customer service.

Strategies

- 2.1. Develop and implement quality standards for pathways between programs and excellent customer service for families with young children.
- 2.2. Pilot effective pathways between public schools and early childhood programs to increase family satisfaction and use of resources.
- 2.3. Promote developmentally appropriate practices that reinforce connections between early childhood services, health, social services, and public schools.

Success Measures

- Increased understanding of available regional resources for families with young children by participating public and private agencies by 2018.
- Parents reporting smooth transition between early childhood services and public school and increased satisfaction in pilot care coordination model by 2019.
- Adoption of family-centered approach to care coordination and case management by partners by 2020.

Goal Three: Policy Alignment and Public Will

Leverage national, regional, state, and local resources and build public will to expand and sustain the region's quality early childhood programs.

3

Goal Three

Policy Alignment and Public Will

Leverage national, regional, state, and local resources and build public will to expand and sustain the region's quality early childhood programs.

Strategies

3.1. Increase the use and sharing of data to better understand conditions, target resources and promote accountability.

3.2. Advocate to increase investment of financial resources and support for quality early childhood programs.

3.3. Research and promote strategies to maximize the use of public and private resources for innovative financing of early childhood programs.

3.4. Advocate for policies that support evidence-based, high-quality early childhood programs.

Success Measures

Expansion of Smart Beginnings's capacity to collect, analyze and publish access, utilization and performance data across the school readiness system by 2017.

Achieving state and local policy changes that support funding and increase access to evidence based, high-quality early childhood programs.

Richmond region school divisions will pilot a mixed delivery model by 2018.

All local departments of social services will draw down Quality Improvement dollars to support Virginia Quality by 2018.

Increase utilization of allocated Virginia Preschool Initiative funding across Richmond region school divisions from 48% to 70% by 2020.

Home visiting programs and funding will be available in every locality by 2020.

Goal Four: Organizational and Professional Capacity

Strengthen the professional and organizational capacity of quality early childhood programs to provide culturally- and trauma-informed care to families with young children.

4

Goal Four

Organizational and Professional Capacity

Strengthen the professional and organizational capacity of quality early childhood programs to provide culturally- and trauma-informed care to families with young children.

Strategies

4.1. Achieve greater levels of participation and progress in Virginia Quality by providers in public and private early care and education settings.

4.2. Mitigate the impact of trauma for professionals, families, caregivers, and children in quality early childhood programs.

4.3. Support early childhood professionals to understand and reduce racial, ethnic, income, and health disparities among those they serve.

4.4. Facilitate the development of sustainable business models for child care providers, particularly those in distressed neighborhoods.

Success Measures

Double participation in Virginia Quality by 2017.

Increase in providers trained in trauma-informed care and integrating practices within their organizations by 2017.

Increase participation in Virginia Quality to serve 25% of all early care and education programs by 2018.

Establishment of a shared services alliance to support early care and education programs by 2018.

Launch of Regional Plan

Presentations

- Region 1 Superintendents
- Capital Region Collaborative
- ChamberRVA
- The Community Foundation
Serving Richmond & Central
VA
- Charles City Economic
Development Agency
- Children's Museum of
Richmond
- Greater Richmond SCAN (July
25)

Resolutions of Support

- Chesterfield County Board of Supervisors and
School Board
- Colonial Heights City Council
- Goochland County School Board
- Hanover County Board of Supervisors and
School Board
- Henrico County Board of Supervisors and School
Board
- New Kent County Board of Supervisors
- Powhatan County Board of Supervisors
- Charles City County School Board (July 18)
- Colonial Heights School Board (July 25th)
- Goochland Board of Supervisors (August 1st)
- New Kent County School Board (August 7th)
- Powhatan County School Board (August 8th)
- Petersburg School Board (August 16th)

Your Partnership

- Resolution of support
- Local government champions
- Opportunities to advance regional goals
- Annual invitation to report on progress

Thank you!

Rich Schultz
Executive Director
rich.schultz@smartbeginningsrva.org

Monica Callahan
Director of Outreach and Development
monica.callahan@smartbeginningsrva.org

Jacqueline Hale
Director of Programs and Community Impact
jacque.hale@smartbeginningsrva.org

www.smartbeginningsrva.org

