



# Commission of Architectural Review SUBMISSION APPLICATION

City of Richmond, Room 510 – City Hall  
900 East Broad Street, Richmond, Virginia 23219  
PHONE: (804) 646-6335 FAX: (804) 646-5789

**12 COPIES OF SUPPORTING DOCUMENTATION ARE REQUIRED FOR PROCESSING YOUR SUBMISSION**

LOCATION OF WORK: 2401 E Marshall, 313 N 24th St DATE: 5/22/15

OWNER'S NAME: Sterling Bilder, LLC TEL NO.: 804-306-5018

AND ADDRESS: 17 S Belmont Ave EMAIL: josh.bilder@gmail.

CITY, STATE AND ZIPCODE: Richmond, VA, 23221

ARCHITECT/CONTRACTOR'S NAME: LGA c/o S Quinn TEL. NO.: 917.547.0634

AND ADDRESS: 81 Vanderbilt Ave EMAIL: sgquinn@mac.com

CITY, STATE AND ZIPCODE: Brooklyn, NY 11205

Would you like to receive your staff report via email? Yes  No

### REQUEST FOR CONCEPTUAL REVIEW

I hereby request Conceptual Review under the provisions of Chapter 114, Article IX, Division 4, Section 114-930.6(d) of the Richmond City Code for the proposal outlined below in accordance with materials accompanying this application. I understand that conceptual review is advisory only.

### APPLICATION FOR CERTIFICATE OF APPROPRIATENESS

I hereby make application for the issuance of a certificate under the provisions of Chapter 114, Article IX, Division 4 (Old and Historic Districts) of the Richmond City Code for the proposal outlined below in accordance with plans and specifications accompanying this application.

### DETAILED DESCRIPTION OF PROPOSED WORK (Required):

#### STATE HOW THE DESIGN REVIEW GUIDELINES INFORM THE DESIGN OF THE WORK

**PROPOSED.** (Include additional sheets of description if necessary, and 12 copies of artwork helpful in describing the project. The 12 copies are not required if the project is being reviewed for an administrative approval. See instruction sheet for requirements.)

Signature of Owner or Authorized Agent: X *Joshua Bilder*  
Name of Owner or Authorized Agent (please print legibly): Joshua Bilder

(Space below for staff use only)

Received by Commission Secretary

APPLICATION NO. \_\_\_\_\_

DATE RECEIVED 1:45

SCHEDULED FOR \_\_\_\_\_

MAY 27 2015

Note: CAR reviews all applications on a case-by-case basis.



**STERLING BILDER CHURCH HILL PROJECTS- 24th STREET GARAGE AND TOWNHOUSES DEVELOPMENT AREAS**

Nolde Garage + Townhouses	
Lot Area	21761
Parking Area	4870
Hardscape	8452
Built Footprint	13653
Built Area: Existing	9365
Built Area: New	12882
Total Built Area	23874
Commercial Area	6168
Patrick Henry Hall	1810
Residential Area	17706
Com/Res Ratio	
Parking Count	14 (inc 1 HC)

\*2nd Fl. excluded

**RESIDENTIAL AREAS, UNIT COUNTS**

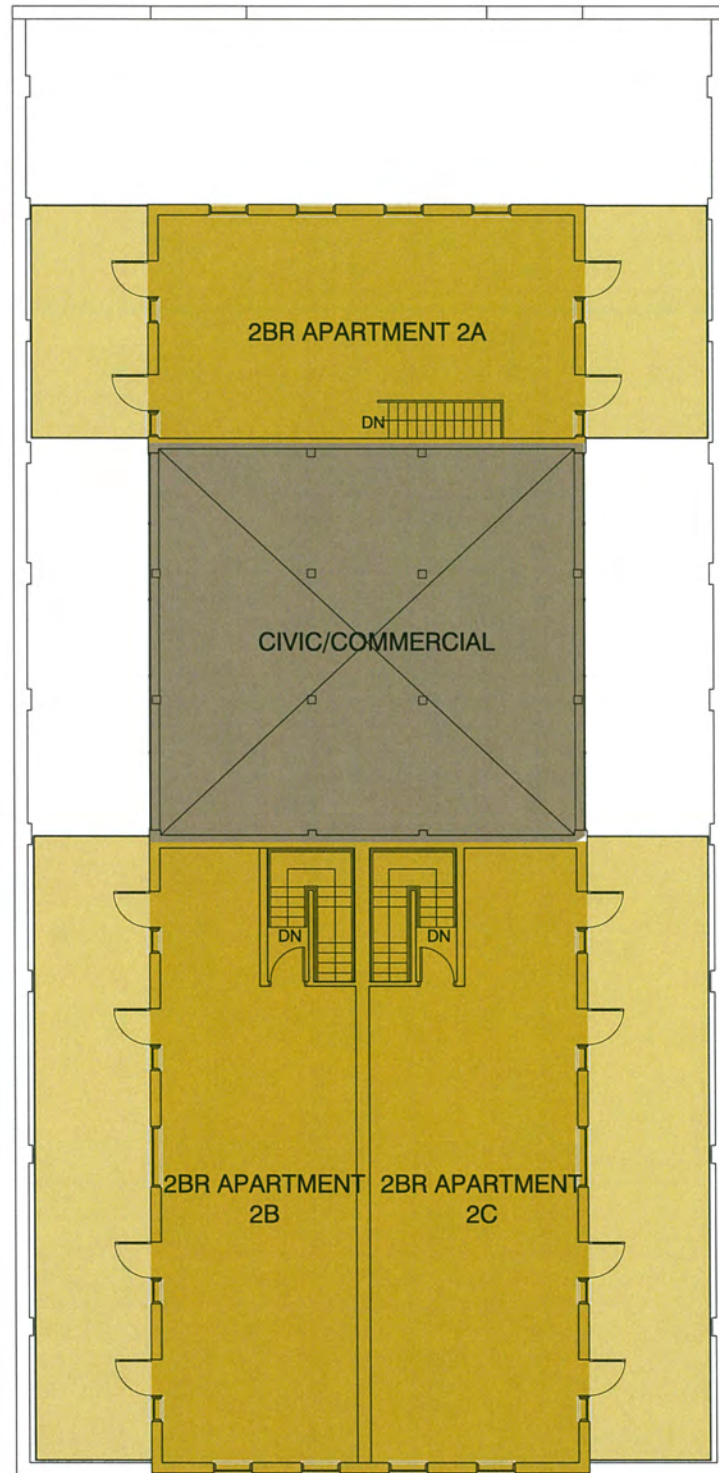
Nolde Garage + Townhouses	
Total Res. Area	17706
Total Common Area	175
Total Leaseable Area	17531
Unit Count	19
Live work/ Ave Res. Area	3 588
1 BR	6
2 BR Count	9
3 BR Count	1
Acres	0.45
Unit Density/Acre	42

BUILDING	PORCH HEIGHT	PARAPET HEIGHT
A	-	32' - 0"
B	18"	24' - 0"
C	14"	24' - 0"
D	22"	26' - 4"
E	3' - 0" / 22"	27' - 2"
F	5' - 4"	25' - 3"
G	-	26' - 6"
H	2' - 7"	26' - 6"
I	-	17' - 10" (@ GARAGE DR)
J	-	27' - 0"
K	-	20' - 8"
L	28" MAX	25' - 2"

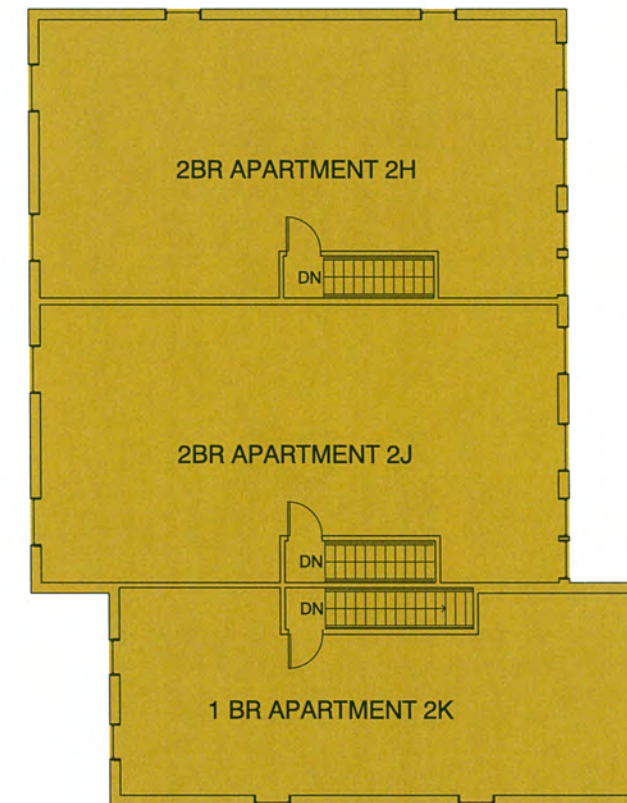
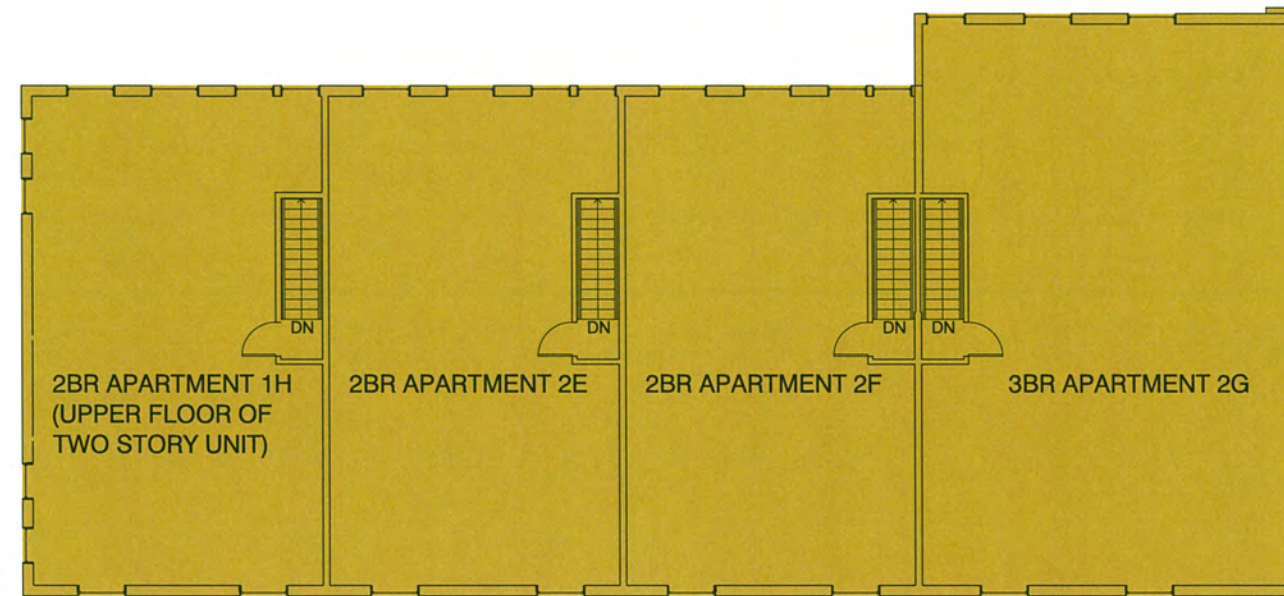
VICINITY PLAN



GROUND FLOOR PLAN



SECOND FLOOR PLAN





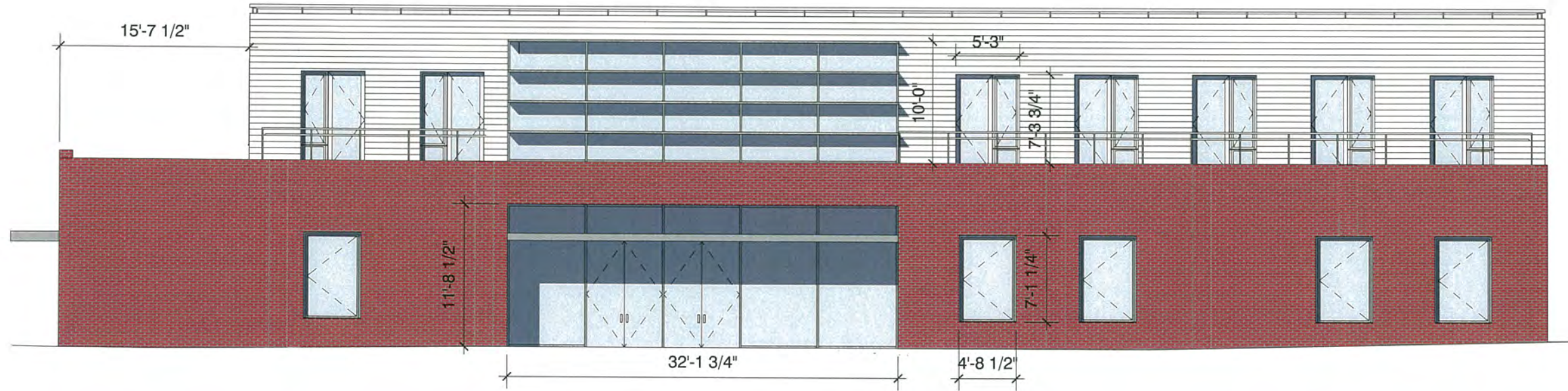
WEST ELEVATION



NORTH ELEVATION



FLR HEIGHT  
FLR HEIGHT  
FLR HEIGHT

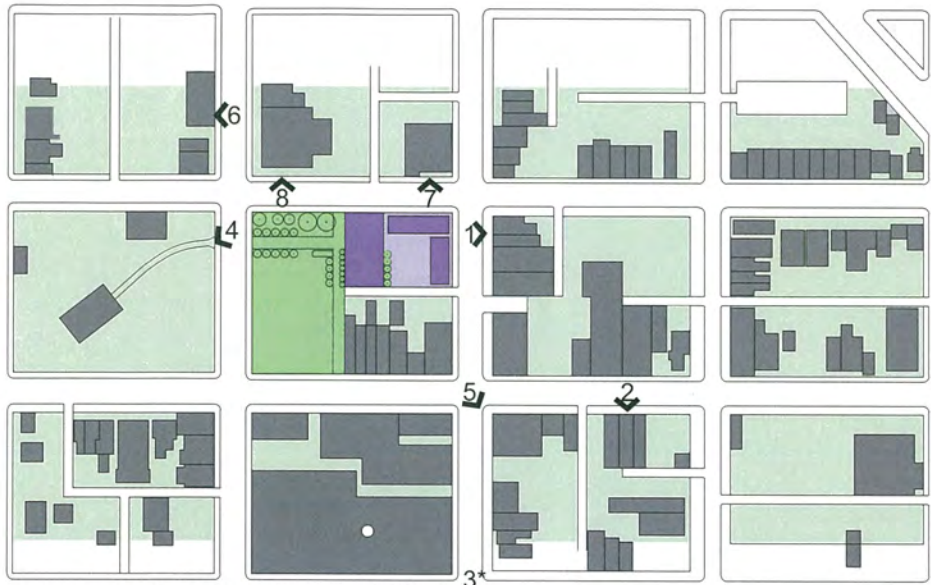


SOUTH ELEVATION



EAST ELEVATION

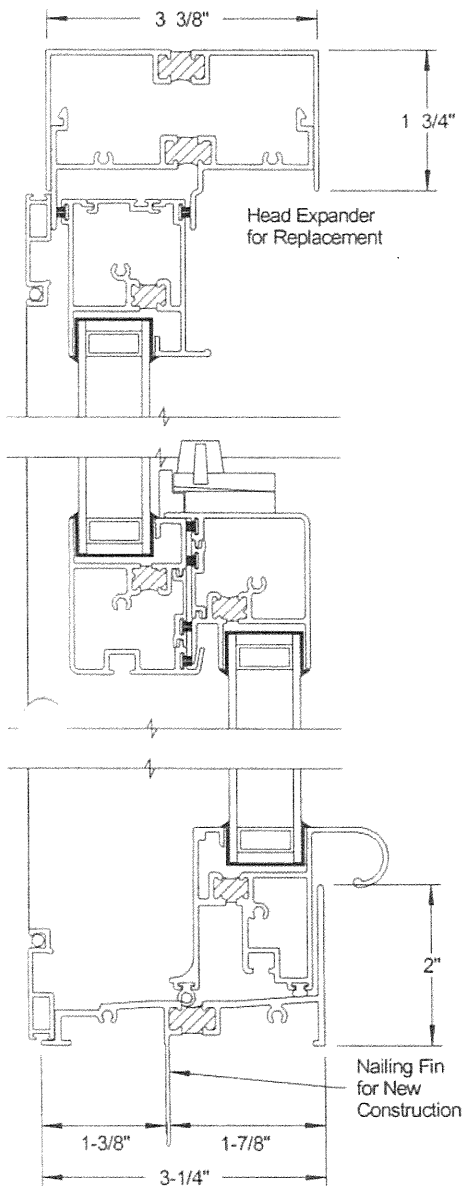












### Commercial Aluminum Double Hung H-C45

#### Standard Features

- 3-1/4" Frame Depth
- T-6063 Aluminum Extrusions with .062" walls
- Thermally Broken Frame and Sash
- Factory Glazed with 7/8" Insulated Glass with Super Spacer<sup>®</sup> warm edge spacer technology for superior thermal performance.
- Zinc die-cast Cam Locks, 2 locks standard over 24" in width
- Replacement or New Construction Frames
- Finseal Weatherseals on both sashes with two rubber bulbs at the frame sill, and four weatherstrips at the interlock.
- Both sashes tilt in for easy cleaning if desired.
- Architectural paint finish meets AAMA 2603. Colors available for normal lead times: White, Bronze, and Tan. For large projects, custom colors are available on a special order basis – please contact our office for details.
- Concealed Spiral Balances for quiet, low-friction operation. Commercial Heavy Duty Balances are available for most large size windows.
- Strong Extruded Aluminum bottom lift rail
- Available with nail fin for new construction or without nail fin for replacement applications.
- Sill Angle for sloped sill replacement applications and Head Expanders are available.

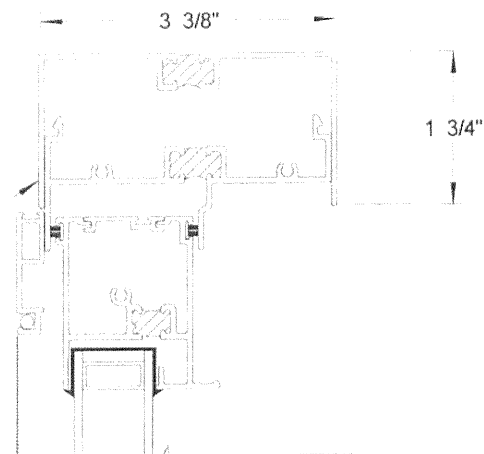
#### Optional Features

- Extruded Aluminum Full or Half Screen for long service life
- Numerous high performance glazing options
- Mullion for multiple units
- Many Grid Between Glass (GBG) configurations are available for greater design flexibility and low maintenance.
- Extruded Aluminum Muntin to divide top sash is especially useful for concealing drop type ceilings.

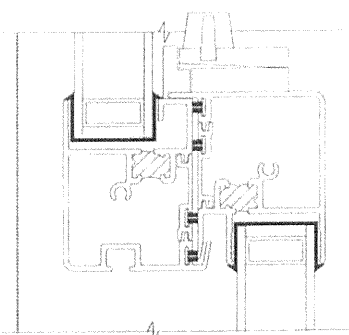
*The West-Prime Thermal Double Hung window is ideally suited for commercial use. Designed to handle the demanding requirements of commercial quality windows, the West-Prime Thermal maintains a pleasing, easy-to-operate residential look and feel. The West-Prime Commercial Aluminum Series, consisting of Double Hung and Fixed windows, are a perfect complement to the Westco Commercial Aluminum Series, both of which can be custom manufactured to your specifications, delivered in a timely manner, and can help make your project a complete success.*

Head Expander

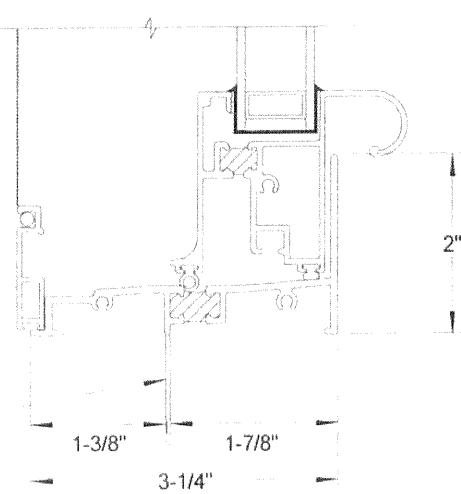
1



2



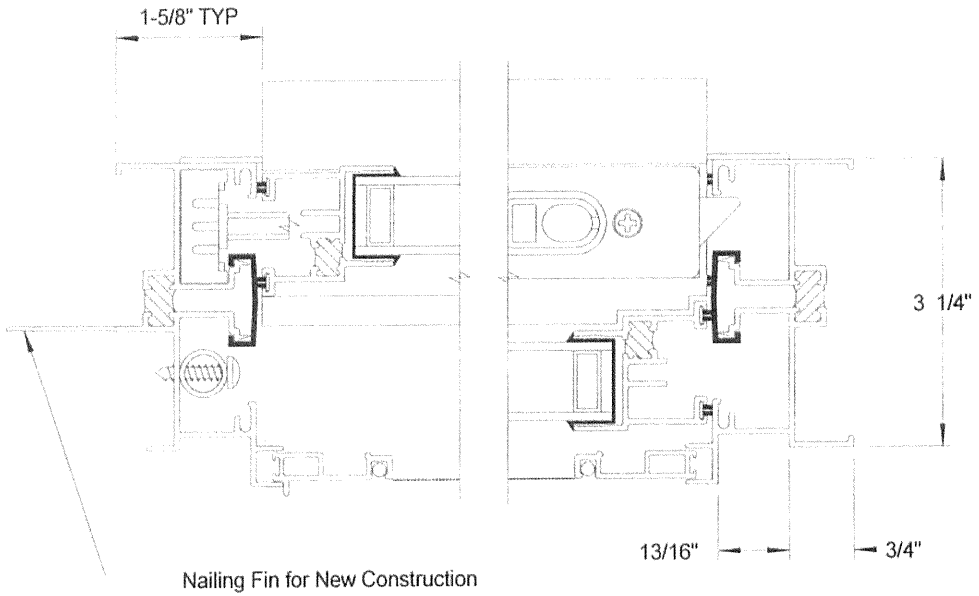
3



Nailing Fin for New Construction

4

5



Nailing Fin for New Construction

1

2

3

5

4

*West Window Corporation*

Industrial Park  
Martinsville, Virginia

P.O. Drawer 3071  
(276)638-2394

West-Prime Thermal Double Hung H-C45

Head, Jamb, and Sill Detail

7-28-10

Scale: Half

Drawn: DB

Sheet: 1 of 3

LINEARIS



**CLADDING CORP**

THE 1<sup>ST</sup> NAME IN RAINSCREEN

swiss  
pearl

SLAT FORMAT  
PANEL DESIGN

**Linearis: /līn ē ər əs/  
noun**

1. SLAT-format fibercement panel exhibiting sleek, linear lines.
2. A Product ideal for cost effective and light-weight rainscreen cladding applications. Linearis is a new cement composite product that is offered in four “stock” format sizes, ten through-bodied cores and fifty-two standard colors including metallic finish options.

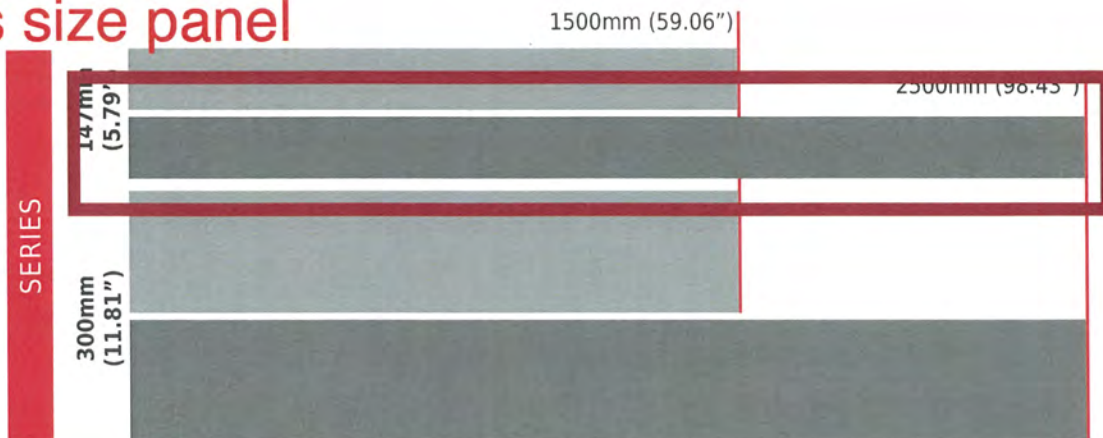


225 Binney Street - Cambridge, MA / Spagnolo Gisness & Associates

**STANDARD SIZES**

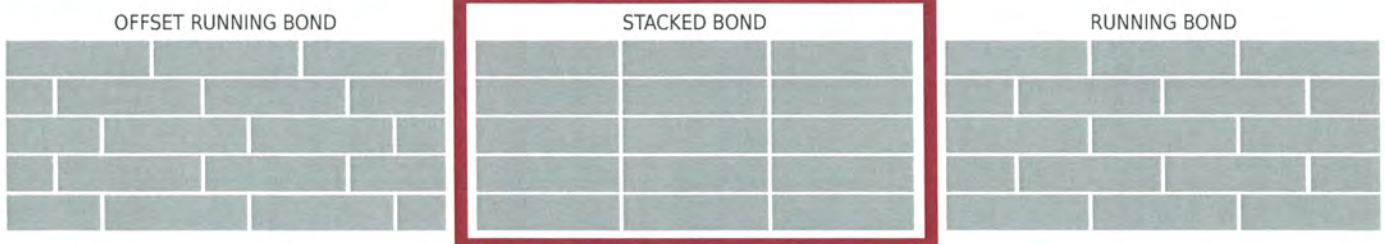
The two standard heights: 147mm (5.79”) and 300mm (11.81”), both available in two standard lengths: 1500mm (59.06”) and 2500mm (98.43”). Panels are provided in stock sizes for cutting and drilling by certified installers on site for quick and easy installation.

**This size panel**



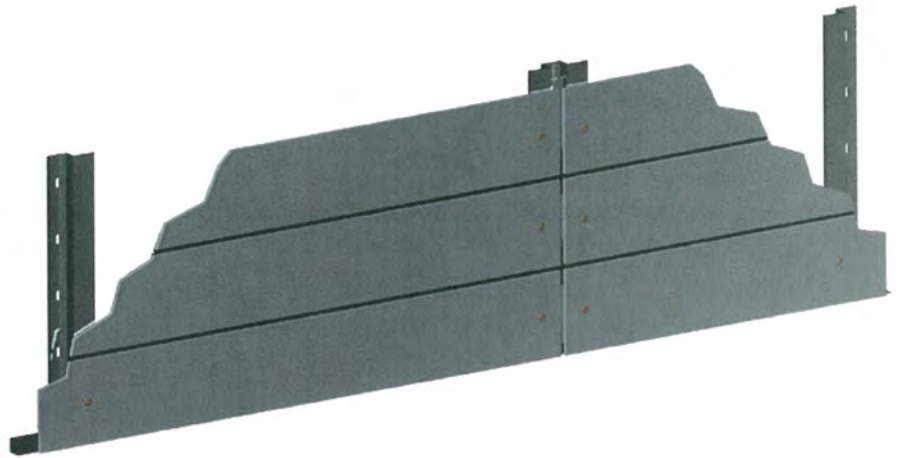
**This panel layout**

**SAMPLE LAYOUTS**



### SLAT FORMAT PANELS

The narrower the strip, the closer the distance between rivets should be, to ensure that the panel strip stays perfectly flat. Utmost care for handling and installation of narrow and longer panels.

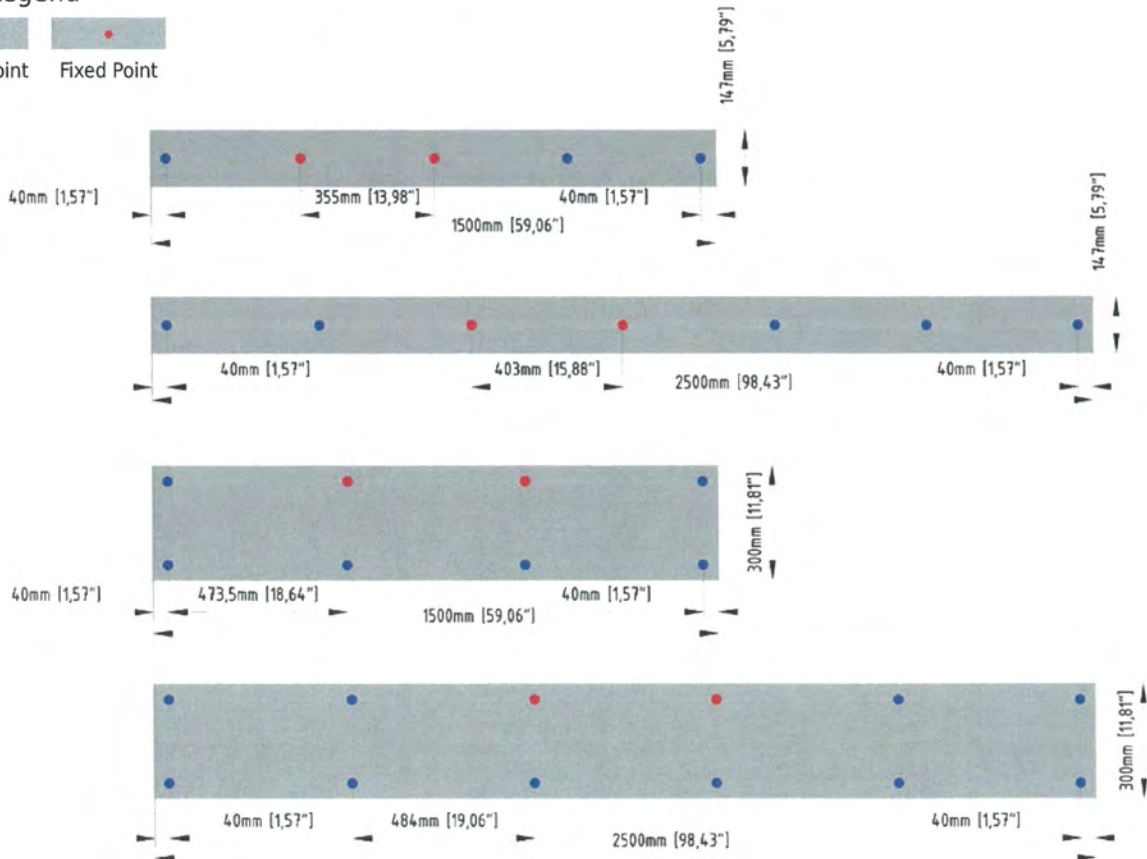
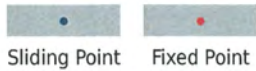


### PANEL DESIGN CRITERIA

Height of strip	Max. distance between rivets (based on 28psf wind loads)
147 mm (5.79")	410mm (16.14")
300 mm (11.81")	550mm (21.65")

### TYPICAL FASTENING PATTERN BY EACH PANEL SIZE

Rivet Legend



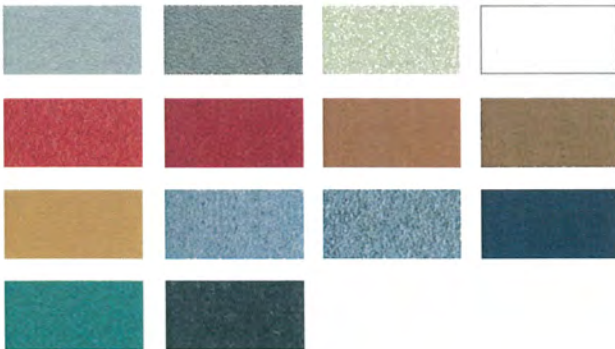
## COLOR SELECTION

Please refer to the "Cem5 Color Selection Guide" to determine your color selection. Samples are available by contacting your Cladding Corp representative.

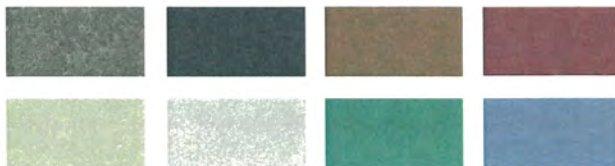
**CARAT** Through-color panel with a translucent or pigmented top layer.



**REFLEX** Through-color panel with an iridescent top surface.



**XPRESSIV** Through-color panel with a vivid cement raw structure.



L Haus - Long Island City, NY / Cetra Ruddy



King Low Heywood Thomas School - Stamford, CT / Roger Ferris + Partners



Little Horn State Bank - Billings, MT / Collaborative Design Architects

**888.826.8453**

info@claddingcorp.com  
www.claddingcorp.com



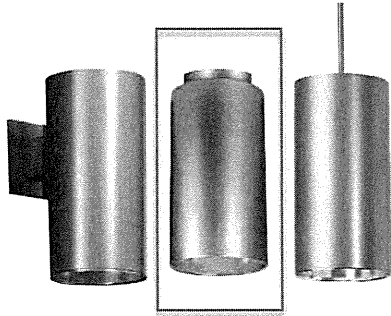
# LCC6LED

LiteForms®

## 6" LED Cylinder

120V-277V 1000-1800 Lumens

LITEFORMS



### FEATURES

- Light Engine utilizes Nichia LEDs for a 3 SCDM color consistency fixture to fixture
- 1000-1800 Lumens delivered
- Glare free optical control
- Suitable for wet locations - Wall mount suitable for wet location. Surface and Pendant suitable for wet location under canopy/covered ceilings only. Cord mount suitable for damp locations.
- Minimum 50,000 hours at 70% lumen maintenance
- LED cylinder with 0-10V dimming standard
- Photometrics tested per IESNA-LM-79-2008 standards.
- Luminaires are certified by a National Recognized Testing Lab (NRTL), either UL or CSA

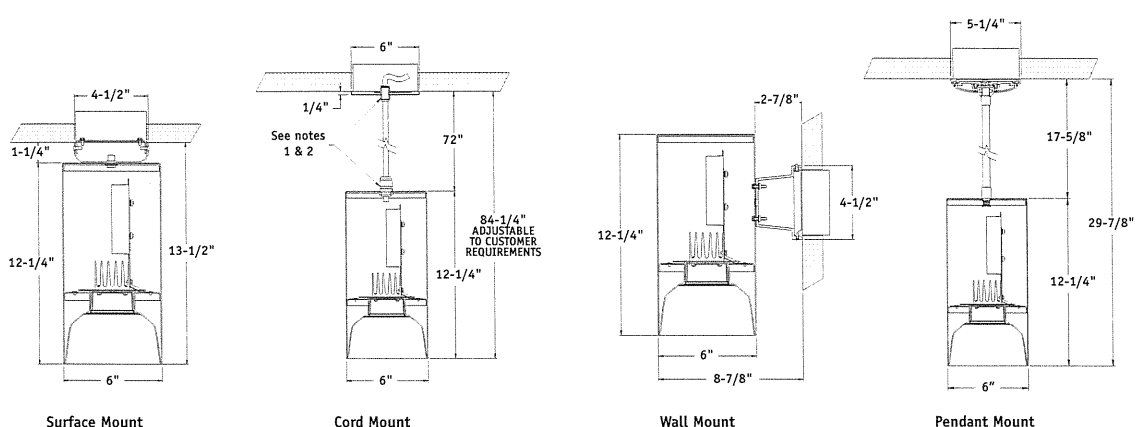
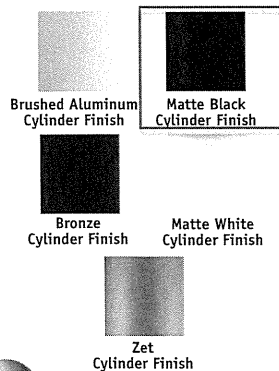
### ORDERING INFORMATION

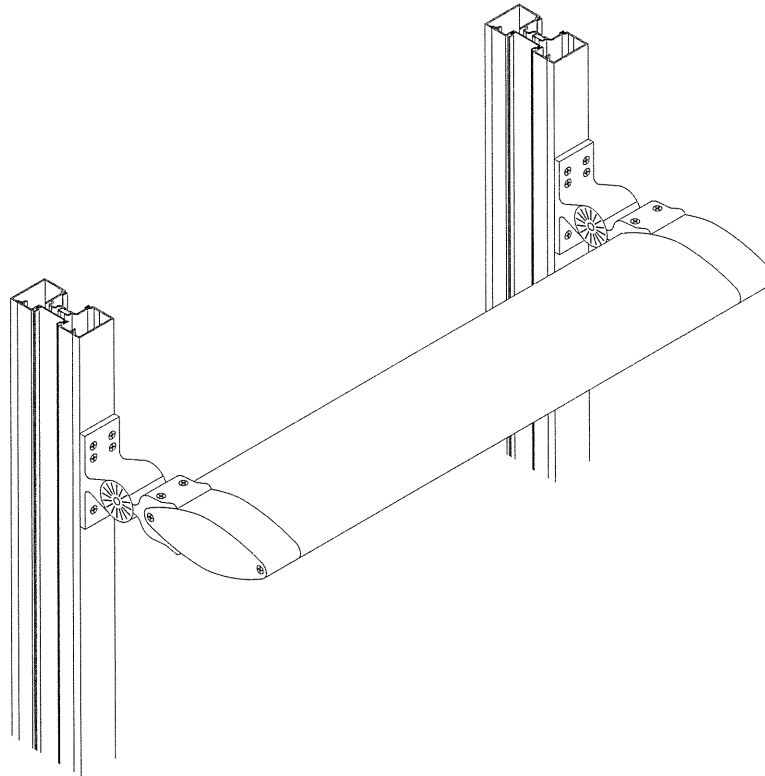
EXAMPLE: LCC6LEDP18L35K8WFL45 BL

LCC6LED	P	18L	35K	8			WFL45			BL	
<b>HOUSING</b>		<b>LED COLOR TEMP</b>		<b>CRI</b>		<b>OPTIONS</b>		<b>BEAM</b>	<b>REFLECTOR FINISH</b>	<b>REFLECTOR COLOR</b>	<b>CYLINDER COLOR</b>
LCC6LED 6" LED Cylinder		27K 2700 Kelvin 30K 3000 Kelvin 35K 3500 Kelvin 40K 4000 Kelvin 50K 5000 Kelvin		8 80+ CRI		Blank Standard 0-10V dimming to 10% EDM <sup>3</sup> Lutron EcoSystem to 1% 2DM Lutron 2 Wire Leading Edge Dimming to 1% (120V only) DM1 Osram dimming to 1% 0-10V		WFL45 Nominal 45 Degree Cutoff	Blank Clear Alzak, Semi-Diffuse	BC Painted Black Cone WC Painted White Cone	BA Brushed Aluminum BZ Bronze BL Matte Black WH Matte White Z Zet
<b>MOUNTING</b>		<b>VOLTAGE</b>		<b>OUTPUT</b>							
P Pendant S Surface CM <sup>1,2</sup> Cord Mount W Wall Mount		Blank 120V-277V 120V 120 Volt (for 2DM)		10L 1000 Delivered Lumens 14L 1400 Delivered Lumens 18L 1800 Delivered Lumens							

### NOTES

- <sup>1</sup> Cord length 6 feet, clear sleeve
- <sup>2</sup> Plastic bushings are grey on white, brushed aluminum and zet cylinder; black on black and bronze
- <sup>3</sup> Consult factory for 3-wire dimming option





## **Features**

- Standardized solution for seamless integration with Trifab® VG 451/451T/451UT and IR501UT storefront framing systems
- Innovative mounting design allows for multiple blade angles
- Tested for combined wind, snow and dead loads
- Multiple blade sizes ranging from 6" (152.4) to 14" (355.6) deep
- Screw spline construction
- Qualifies for up to 3 different LEED certification criteria
- Design allows for thermal expansion and contraction
- Permanodic® anodized finishes in 7 choices
- Painted finishes in standard and custom choices
- Shading performance can be analyzed by Selector® Sun Shading Estimator Tool

## **Product Application**

- Storefronts
- Enclosures to hide roof mounted machine rooms or mechanical systems
- Interior aesthetical application

For specific product applications,  
Consult your Kawneer representative.

**Architects** – Most extrusions illustrated in this catalog are standard products for Kawneer. These concepts have been expanded and modified to afford you design freedom. Some miscellaneous details are non-standard and are intended to demonstrate how the system can be modified to expand design flexibility. Please contact your Kawneer representative for further assistance.

**TRIFAB® VG 451/451T/451UT DETAILS ..... 4**

**IR501UT DETAILS ..... 5**

**SPLICE JOINT / END CAP DETAILS..... 6**

**BLADE OPTIONS ..... 7**

**BLADE ANGLE CONFIGURATIONS ..... 8**

**LOAD CHARTS..... 9, 10**

Laws and building and safety codes governing the design and use of glazed entrance, window, and curtain wall products vary widely. Kawneer does not control the selection of product configurations, operating hardware, or glazing materials, and assumes no responsibility therefor.

Kawneer reserves the right to change configuration without prior notice when deemed necessary for product improvement.

© Kawneer Company, Inc., 2011

LAWS AND BUILDING AND SAFETY CODES GOVERNING THE DESIGN AND USE OF GLAZED ENTRANCE, WINDOW, AND CURTAIN WALL PRODUCTS VARY WIDELY. KAWNEER DOES NOT CONTROL THE SELECTION OF PRODUCT CONFIGURATIONS, OPERATING HARDWARE, OR GLAZING MATERIALS, AND ASSUMES NO RESPONSIBILITY THEREFOR.

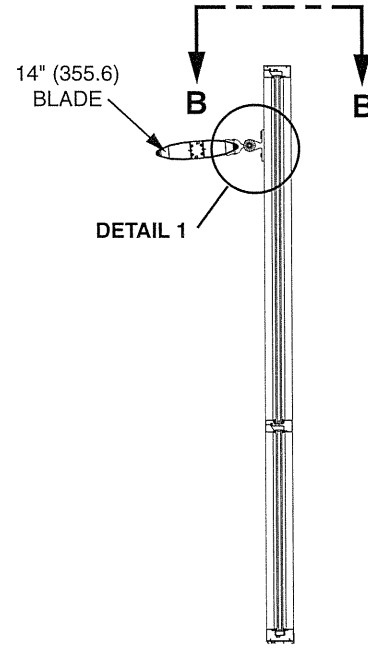
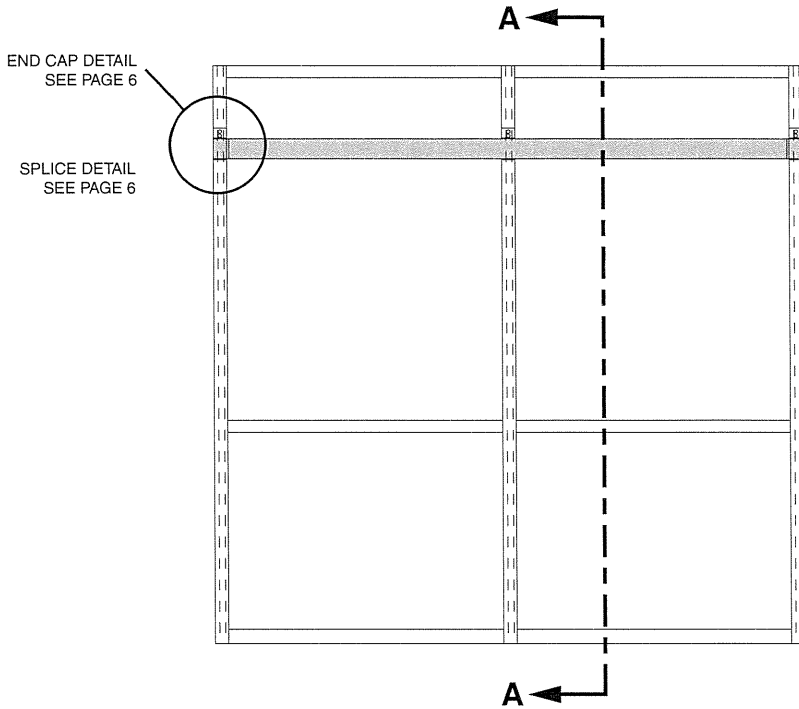
Metric (SI) conversion figures are included throughout these details for reference. Numbers in parentheses ( ) are millimeters unless otherwise noted.

The following metric (SI) units are found in these details:

- m – meter
- cm – centimeter
- mm – millimeter
- s – second
- Pa – pascal
- MPa – megapascal

Kawneer reserves the right to change configurations without prior notice when deemed necessary for product improvement.

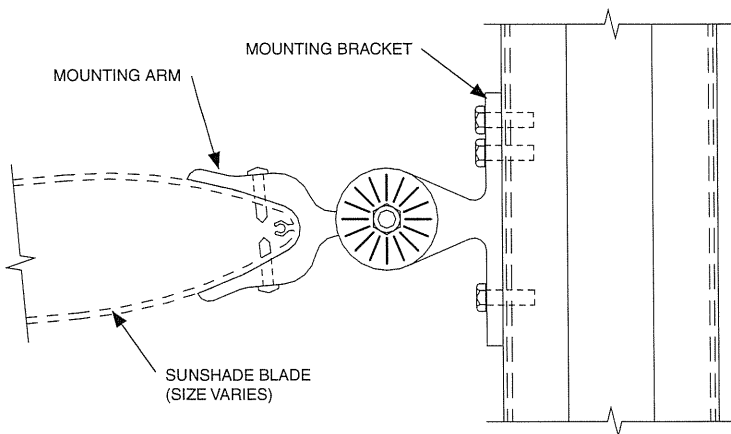
## HORIZONTAL BLADE WITH TRIFAB® VG 451/451T/451UT TYPICAL ELEVATION



**SECTION A-A**

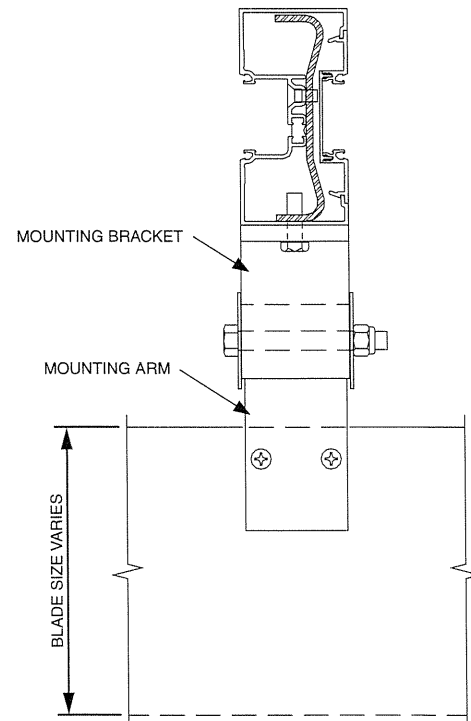
**NOTE:**  
Horizontal sunshades are not recommended directly over entrances and walkways to eliminate any risk of injury due to falling ice or snow.

Trifab® VG 451T Shown  
451 and 451UT Systems Similar



**DETAIL 1**

**NOTE: SEE PAGE 7 FOR SUNSHADE BLADE OPTIONS**

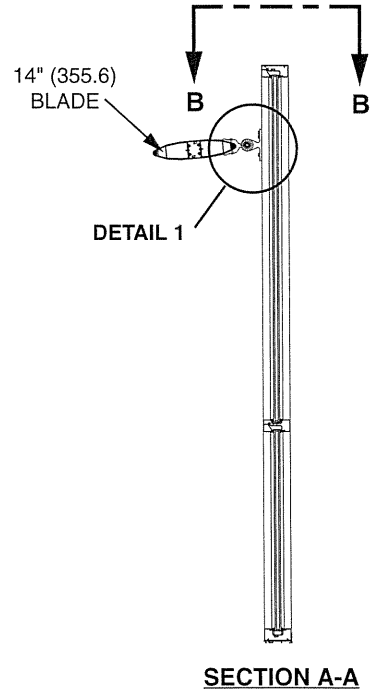
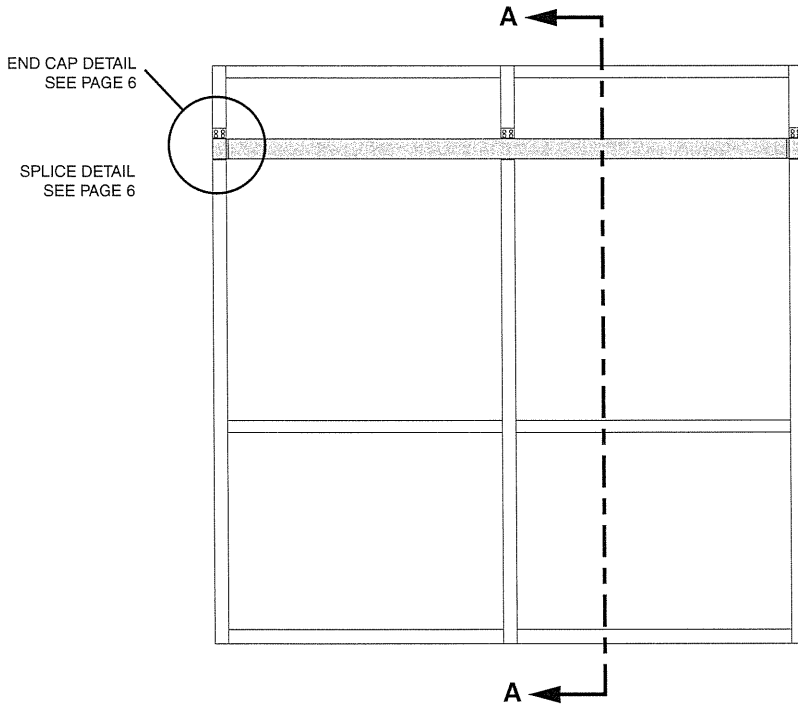


**SECTION B-B**

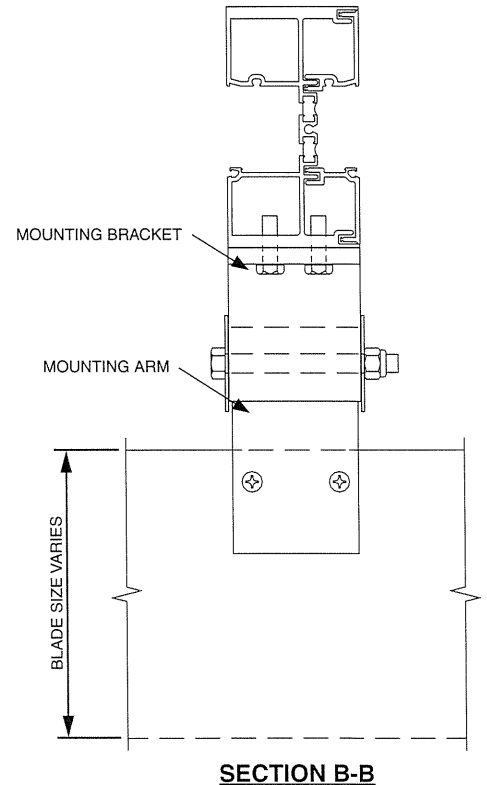
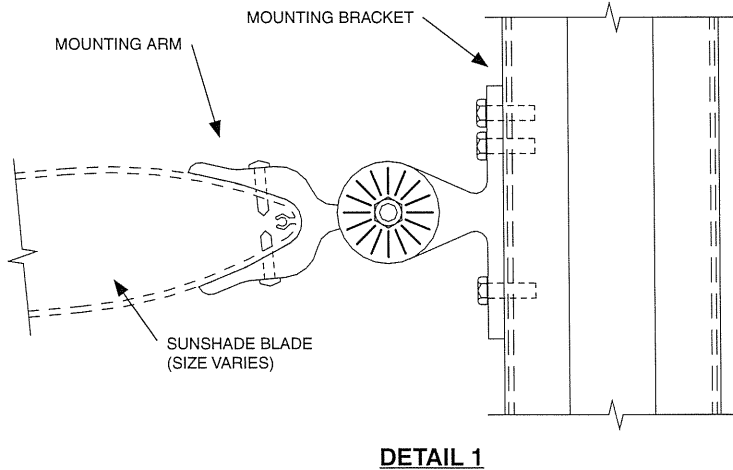
Laws and building and safety codes governing the design and use of glazed entrance, window, and curtain wall products vary widely. Kawneer does not control the selection of product configurations, operating hardware, or glazing materials, and assumes no responsibility therefor.

Kawneer reserves the right to change configuration without prior notice when deemed necessary for product improvement.  
© Kawneer Company, Inc., 2011

## HORIZONTAL BLADE WITH IR501UT TYPICAL ELEVATION



**NOTE:**  
Horizontal sunshades are not recommended directly over entrances and walkways to eliminate any risk of injury due to falling ice or snow.

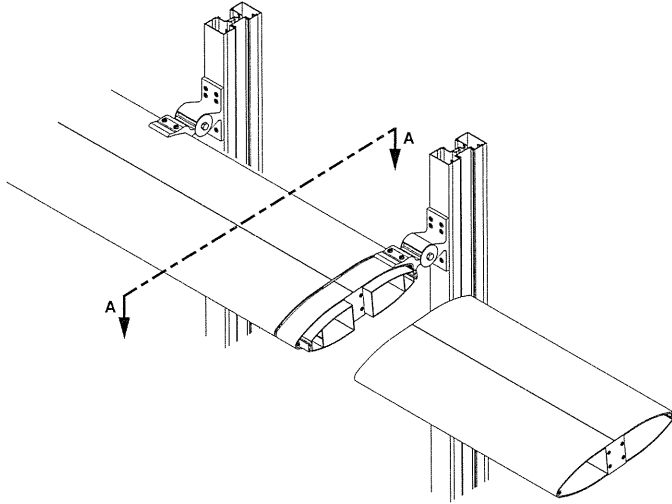


**NOTE: SEE PAGE 7 FOR SUNSHADE BLADE OPTIONS**

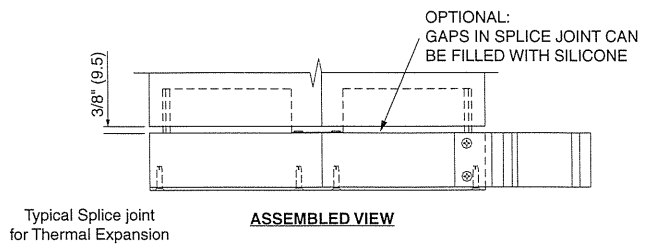
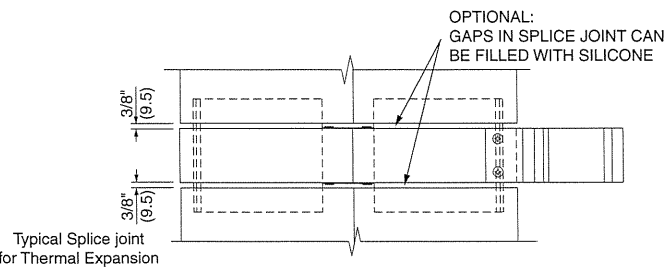
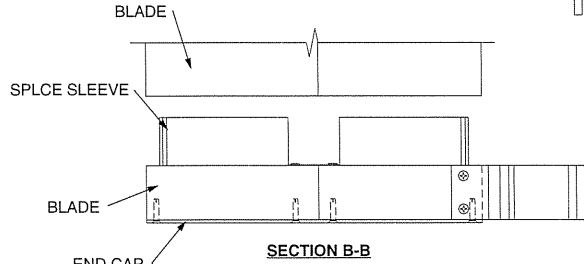
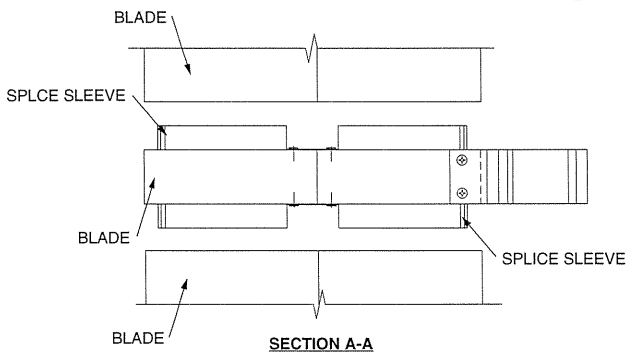
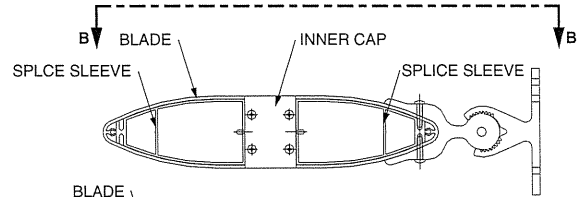
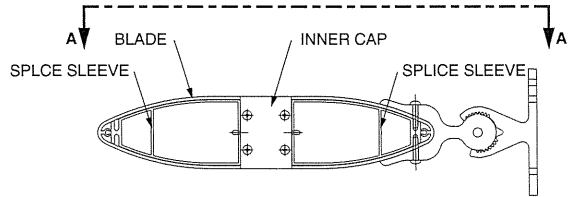
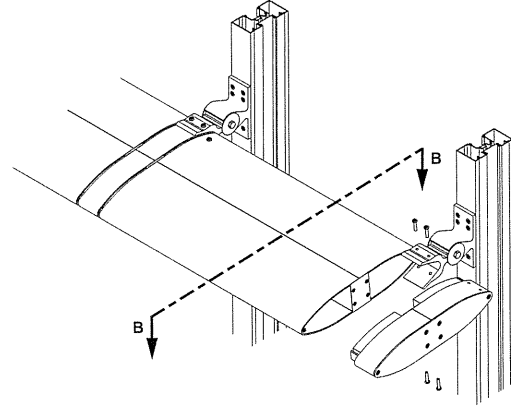
Laws and building and safety codes governing the design and use of glazed entrance, window, and curtain wall products vary widely. Kawneer does not control the selection of product configurations, operating hardware, or glazing materials, and assumes no responsibility therefor.

Kawneer reserves the right to change configuration without prior notice when deemed necessary for product improvement.  
© Kawneer Company, Inc., 2011

**SPLICE JOINT ASSEMBLY**



**END CAP ASSEMBLY**



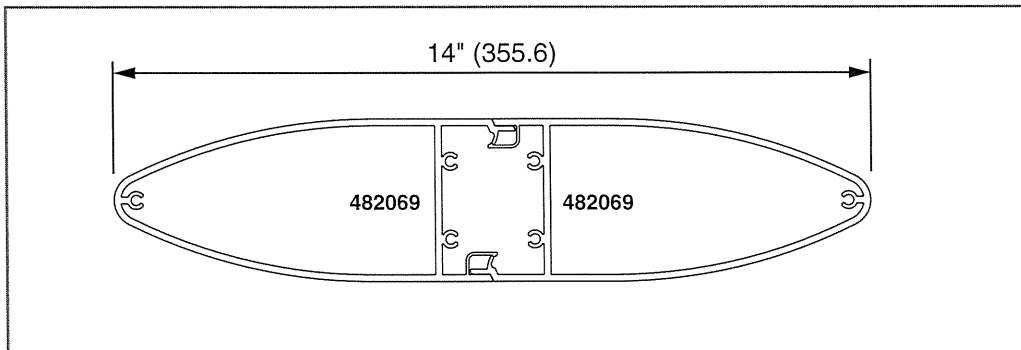
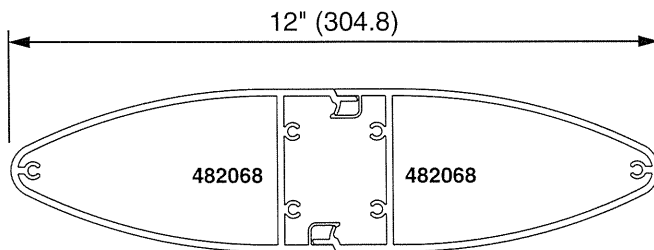
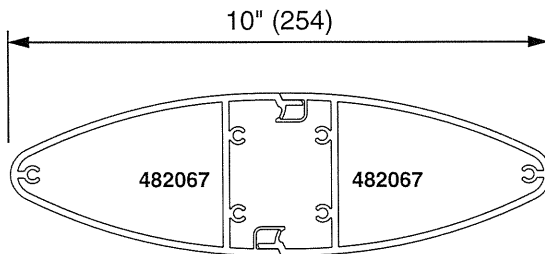
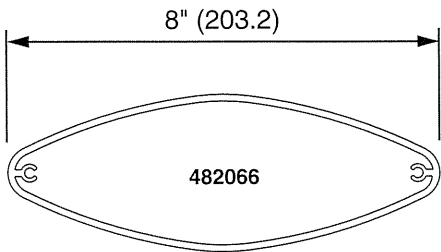
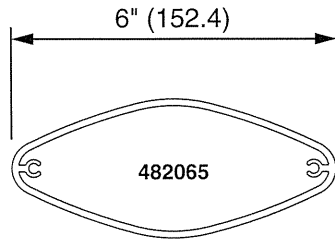
Laws and building and safety codes governing the design and use of glazed entrance, window, and curtain wall products vary widely. Kawneer does not control the selection of product configurations, operating hardware, or glazing materials, and assumes no responsibility therefor.

Kawneer reserves the right to change configuration without prior notice when deemed necessary for product improvement.

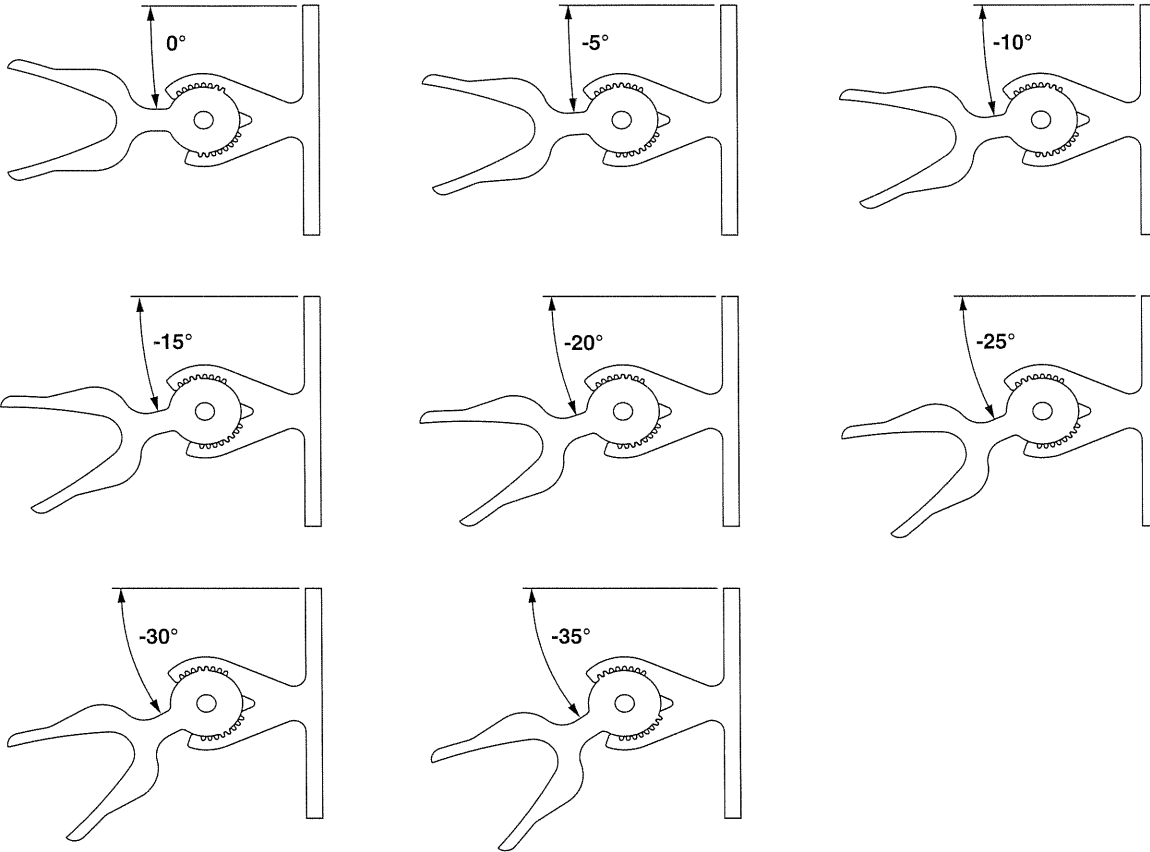
© Kawneer Company, Inc., 2011

Laws and building and safety codes governing the design and use of glazed entrance, window, and curtain wall products vary widely. Kawneer does not control the selection of product configurations, operating hardware, or glazing materials, and assumes no responsibility therefor.

Kawneer reserves the right to change configuration without prior notice when deemed necessary for product improvement.  
© Kawneer Company, Inc., 2011



### ANGLES FOR HORIZONTAL SINGLE BLADE APPLICATIONS 0° TO -35° ROTATION



**NOTE:**  
**MOUNTING BRACKET AND MOUNTING ARM ARE AVAILABLE IN PAINTED  
 FINISH ONLY AND WILL BE FINISHED TO MATCH ANODIZED FINISH**

Laws and building and safety codes governing the design and use of glazed entrance, window, and curtain wall products vary widely. Kawneer does not control the selection of product configurations, operating hardware, or glazing materials, and assumes no responsibility therefor.

Kawneer reserves the right to change configuration without prior notice when deemed necessary for product improvement.  
 © Kawneer Company, Inc., 2011



## FEATURES

- Economical
- 1-3/4" sight line with a 3-9/16", 4-1/2" or 6" depth
- Front or Center (4-1/2") glass applications
- Outside glazed
- Screw Spline, Shear Block or Type-B fabrication
- SSG option
- Infill options up to 1-1/8"
- Thermal break via. Polymer glazing clip
- Permanodic™ anodized finishes in seven standard choices
- Painted finishes in standard and custom choices

## OPTIONAL FEATURES

- Two color capability
- 1-1/4" perimeter sight line
- Project specific U-factors (See Thermal Charts)

## PRODUCT APPLICATIONS

- Storefront, Ribbon Window or Punched Openings
- Low to mid-rise
- Single-span
- Curved frames
- Integrated entrance framing allowing Kawneer entrances or other specialty entrances to be included
- Kawneer windows or GLASSvent™ for storefront are easily incorporated

For specific product applications,  
consult your Kawneer Representative

**PICTORIAL VIEWS ..... 5-8**

**BASIC FRAMING DETAILS..... 9-20**

**MISCELLANEOUS FRAMING..... 21,22**

**GLAZING CHART ..... 22**

**GLASSvent™ FOR STOREFRONT..... 23,24**

**VENTS..... 25**

**ENTRANCE FRAMING ..... 26-32**

**WINDLOAD/DEADLOAD CHARTS..... 33-41**

**DEADLOAD CHARTS ..... 42-46**

**THERMAL CHARTS ..... 47-51**

**GLAZING CLIP CHART..... 52**

Laws and building and safety codes governing the design and use of glazed entrance, window, and curtain wall products vary widely. Kawneer does not control the selection of product configurations, operating hardware, or glazing materials, and assumes no responsibility therefor.

Kawneer reserves the right to change configuration without prior notice when deemed necessary for product improvement.  
© Kawneer Company, Inc., 2014

LAWS AND BUILDING AND SAFETY CODES GOVERNING THE DESIGN AND USE OF GLAZED ENTRANCE, WINDOW, AND CURTAIN WALL PRODUCTS VARY WIDELY. KAWNEER DOES NOT CONTROL THE SELECTION OF PRODUCT CONFIGURATIONS, OPERATING HARDWARE, OR GLAZING MATERIALS, AND ASSUMES NO RESPONSIBILITY THEREFOR.

Metric (SI) conversion figures are included throughout these details for reference. Numbers in parentheses ( ) are millimeters unless otherwise noted.

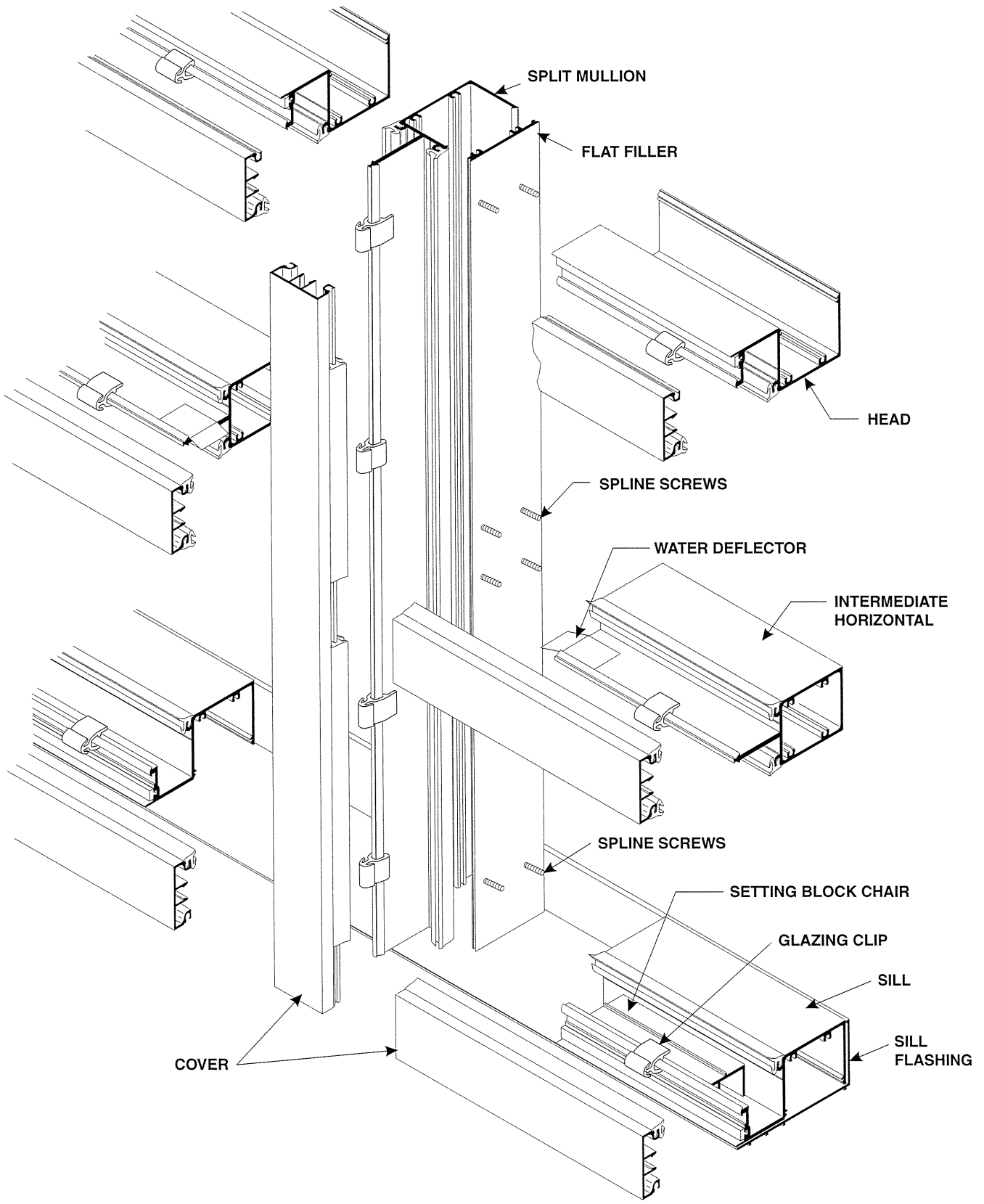
The following metric (SI) units are found in these details:

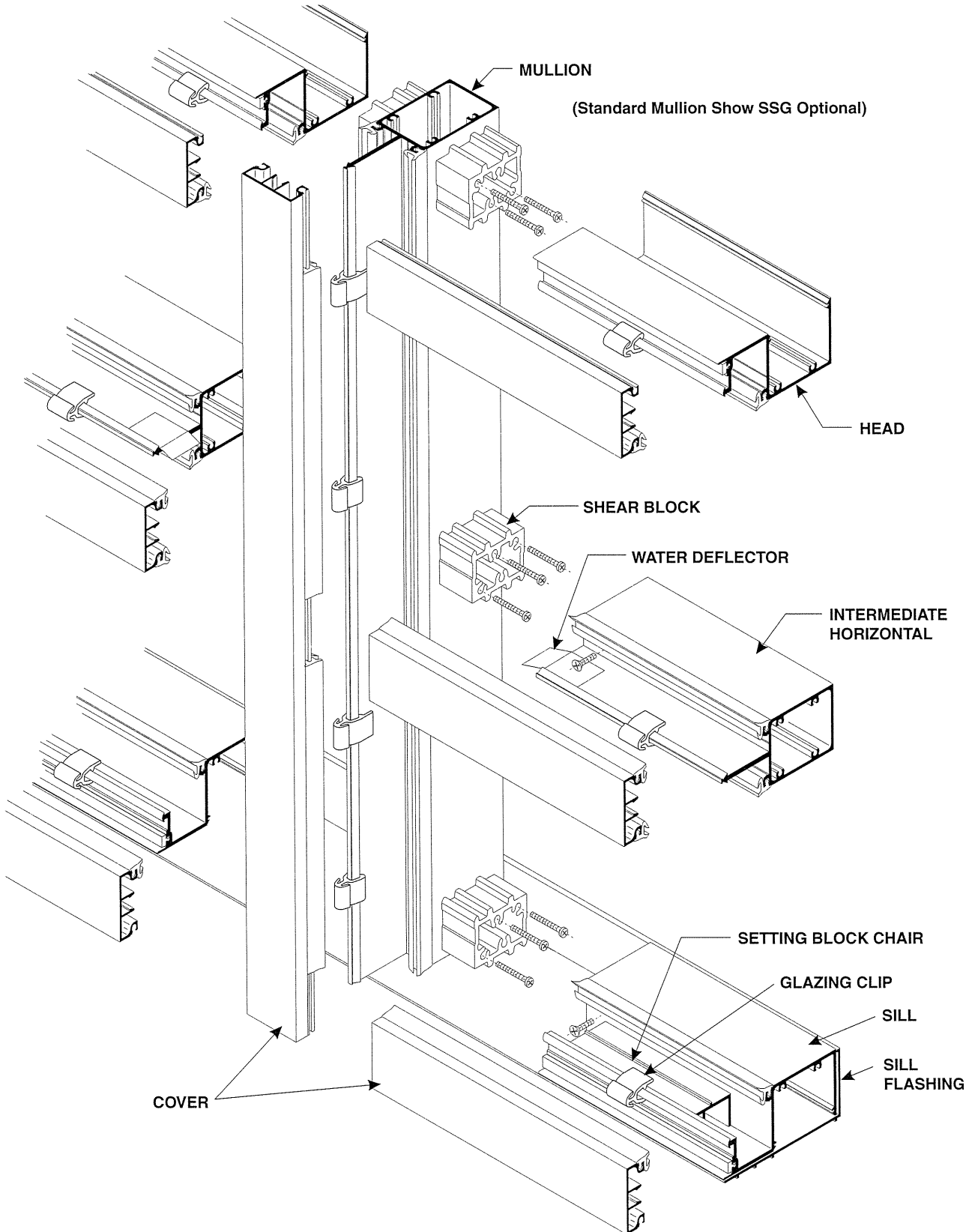
- m – meter
- cm – centimeter
- mm – millimeter
- s – second
- Pa – pascal
- MPa – megapascal

Kawneer reserves the right to change configurations without prior notice when deemed necessary for product improvement.

Laws and building and safety codes governing the design and use of glazed entrance, window, and curtain wall products vary widely. Kawneer does not control the selection of product configurations, operating hardware, or glazing materials, and assumes no responsibility therefor.

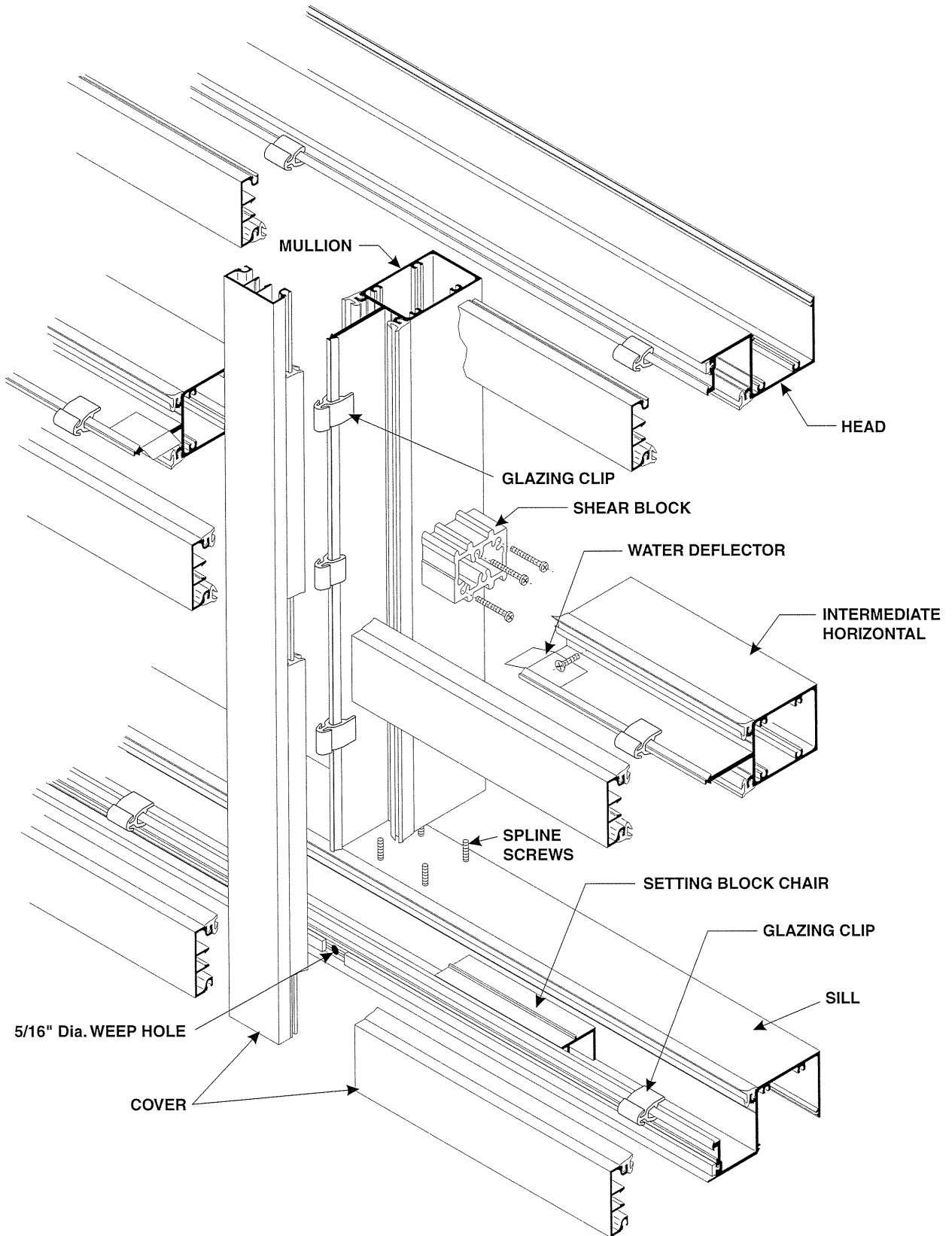
Kawneer reserves the right to change configuration without prior notice when deemed necessary for product improvement.  
© Kawneer Company, Inc., 2014





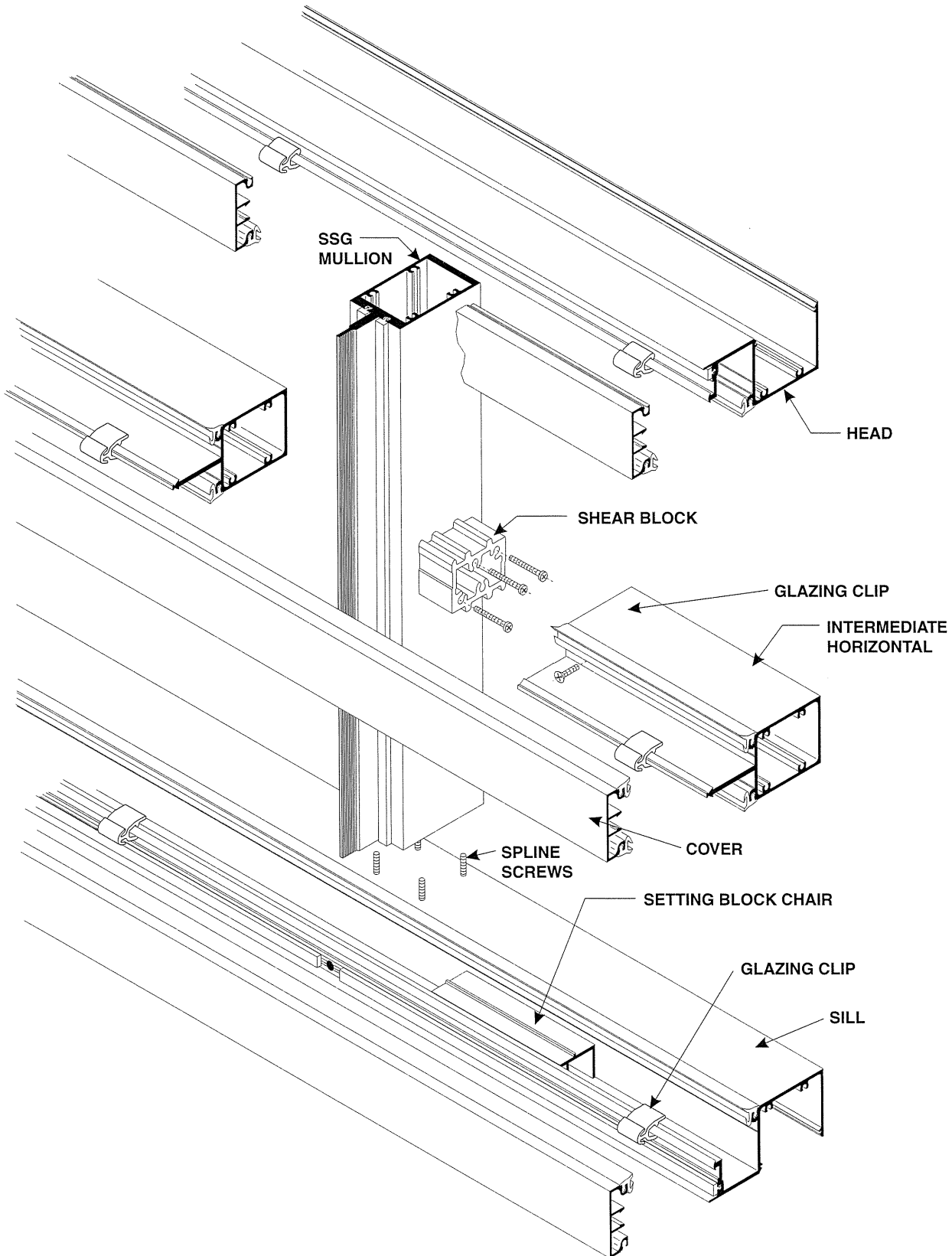
Laws and building and safety codes governing the design and use of glazed entrance, window, and curtain wall products vary widely. Kawneer does not control the selection of product configurations, operating hardware, or glazing materials, and assumes no responsibility therefor.

Kawneer reserves the right to change configuration without prior notice when deemed necessary for product improvement.  
© Kawneer Company, Inc., 2014



Laws and building and safety codes governing the design and use of glazed entrance, window, and curtain wall products vary widely. Kawneer does not control the selection of product configurations, operating hardware, or glazing materials, and assumes no responsibility therefor.

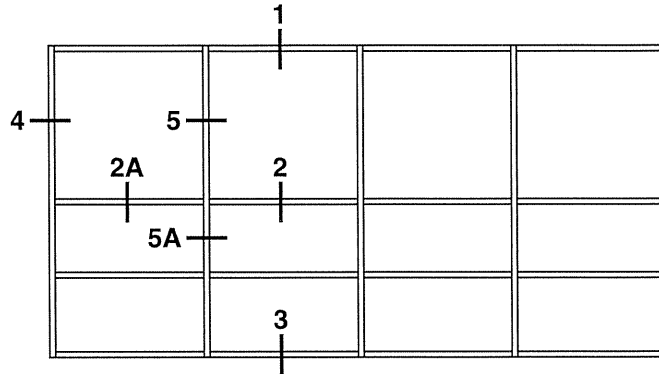
Kawneer reserves the right to change configuration without prior notice when deemed necessary for product improvement.  
© Kawneer Company, Inc., 2014



Laws and building and safety codes governing the design and use of glazed entrance, window, and curtain wall products vary widely. Kawneer does not control the selection of product configurations, operating hardware, or glazing materials, and assumes no responsibility therefor.

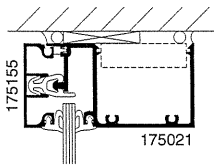
Kawneer reserves the right to change configuration without prior notice when deemed necessary for product improvement.  
© Kawneer Company, Inc., 2014

SCALE 3" = 1'-0"

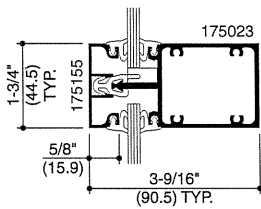


ELEVATION IS NUMBER KEYED TO DETAILS

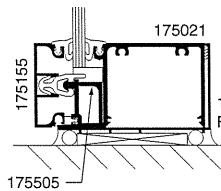
1/4" INFILL



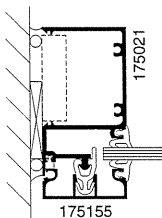
1 HEAD



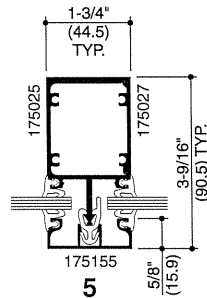
2 HORIZONTAL



3 SILL

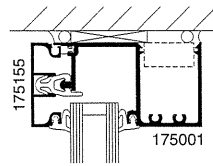


4 JAMB

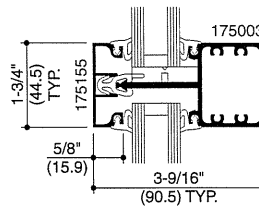


5 MULLION

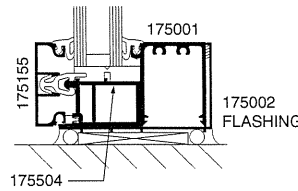
1" INFILL



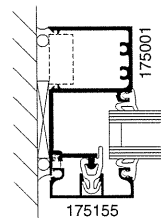
1 HEAD



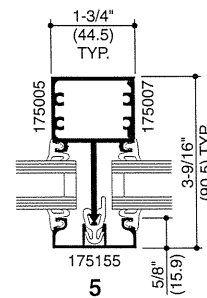
2 HORIZONTAL



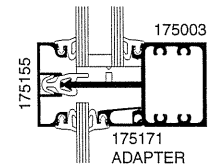
3 SILL



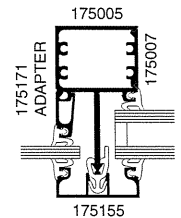
4 JAMB



5 SPLIT MULLION



2A HORIZONTAL W/ 1/4" ADAPTER

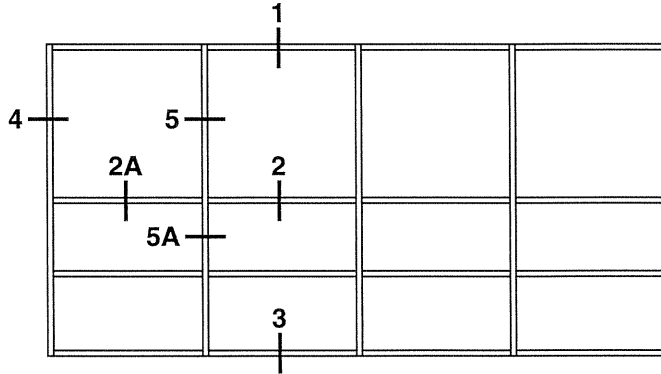


5A SPLIT MULLION W/ 1/4" ADAPTER

Laws and building and safety codes governing the design and use of glazed entrance, window, and curtain wall products vary widely. Kawneer does not control the selection of product configurations, operating hardware, or glazing materials, and assumes no responsibility therefor.

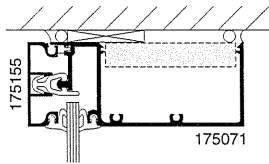
Kawneer reserves the right to change configuration without prior notice when deemed necessary for product improvement.  
© Kawneer Company, Inc., 2014

SCALE 3" = 1'-0"

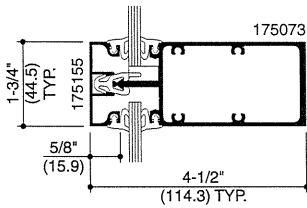


ELEVATION IS NUMBER KEYED TO DETAILS

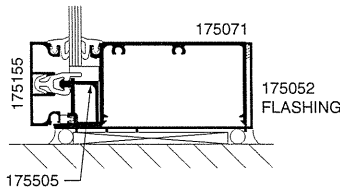
1/4" INFILL



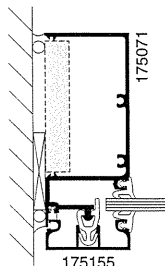
1 HEAD



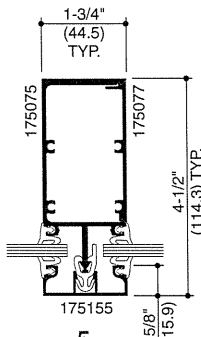
2 HORIZONTAL



3 SILL

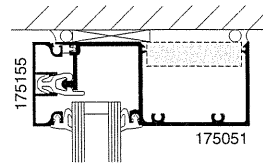


4 JAMB

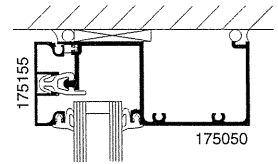


5 MULLION

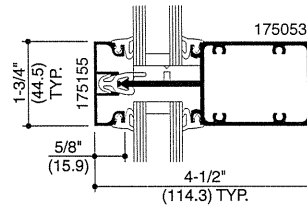
1" INFILL



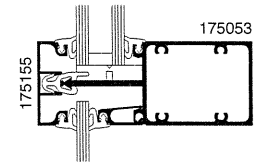
1 HEAD



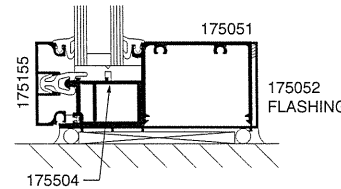
1 HEAD W/ CAULK LEG



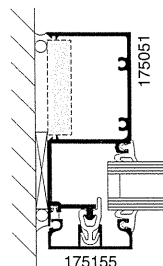
2 HORIZONTAL



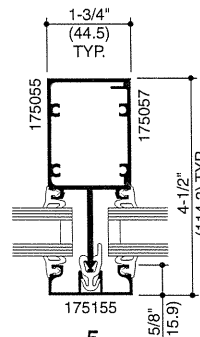
175171 ADAPTER  
2A HORIZONTAL W/ 1/4" ADAPTER



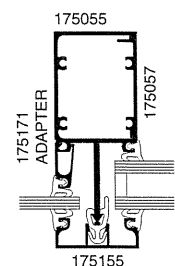
3 SILL



4 JAMB



5 SPLIT MULLION



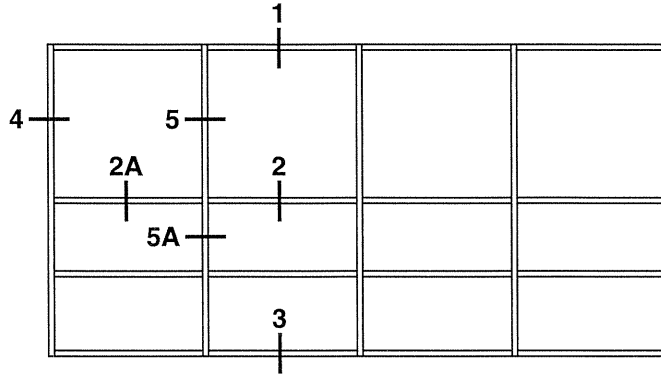
175171 ADAPTER  
5A SPLIT MULLION W/ 1/4" ADAPTER

Laws and building and safety codes governing the design and use of glazed entrance, window, and curtain wall products vary widely. Kawneer does not control the selection of product configurations, operating hardware, or glazing materials, and assumes no responsibility therefor.

Kawneer reserves the right to change configuration without prior notice when deemed necessary for product improvement.  
© Kawneer Company, Inc., 2014



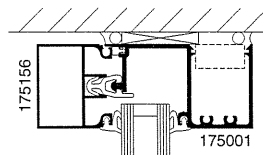
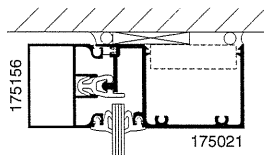
SCALE 3" = 1'-0"



ELEVATION IS NUMBER KEYED TO DETAILS

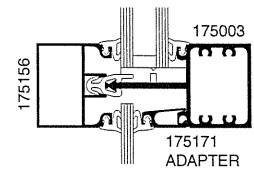
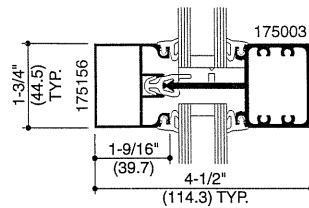
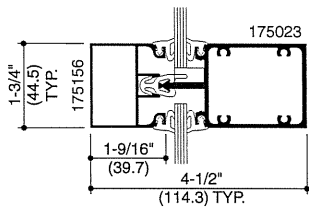
1/4" INFILL

1" INFILL



1 HEAD

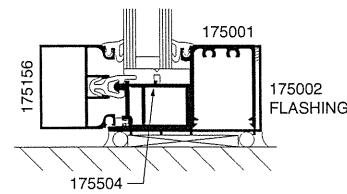
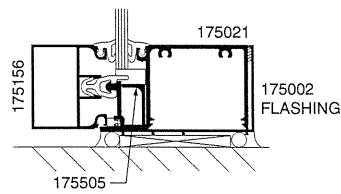
1 HEAD



2 HORIZONTAL

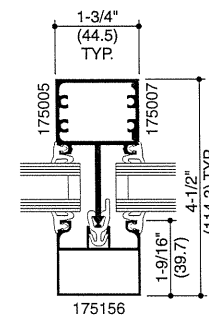
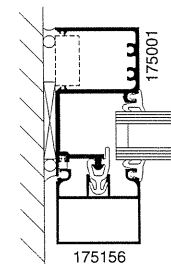
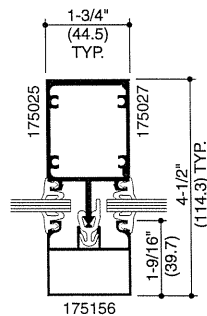
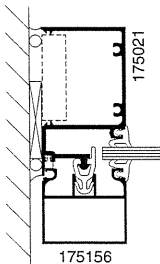
2 HORIZONTAL

2A HORIZONTAL W/ 1/4" ADAPTER



3 SILL

3 SILL

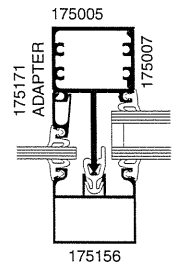


4 JAMB

5 MULLION

4 JAMB

5 SPLIT MULLION

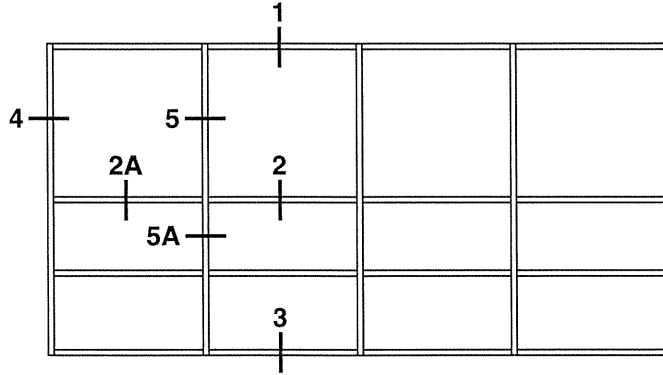


5A SPLIT MULLION W/ 1/4" ADAPTER

Laws and building and safety codes governing the design and use of glazed entrance, window, and curtain wall products vary widely. Kawneer does not control the selection of product configurations, operating hardware, or glazing materials, and assumes no responsibility therefor.

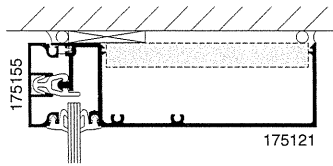
Kawneer reserves the right to change configuration without prior notice when deemed necessary for product improvement.  
© Kawneer Company, Inc., 2014

SCALE 3" = 1'-0"

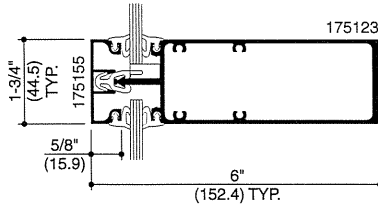


ELEVATION IS NUMBER KEYED TO DETAILS

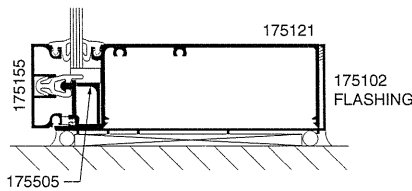
1/4" INFILL



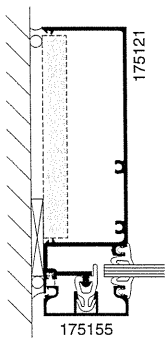
1 HEAD



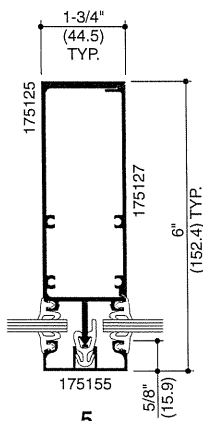
2 HORIZONTAL



3 SILL

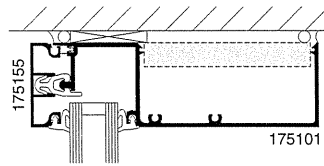


4 JAMB

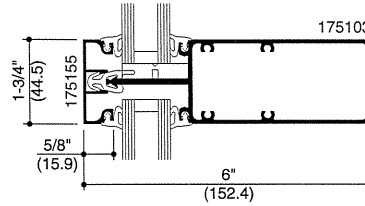


5 MULLION

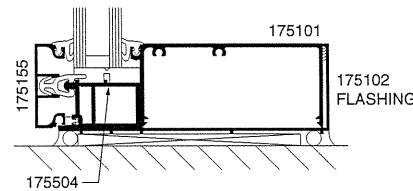
1" INFILL



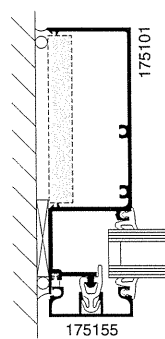
1 HEAD



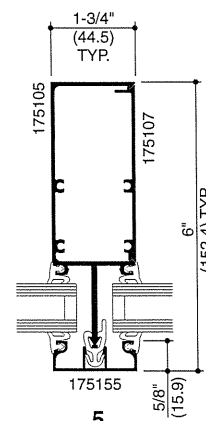
2 HORIZONTAL



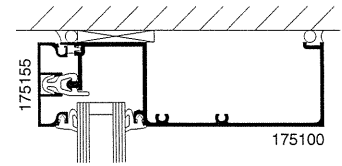
3 SILL



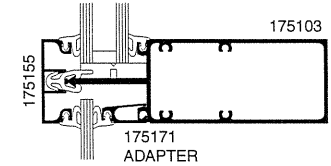
4 JAMB



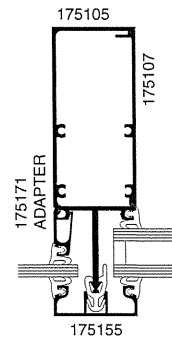
5 SPLIT MULLION



1 HEAD W/ CAULK LEG



2A HORIZONTAL W/ 1/4" ADAPTER



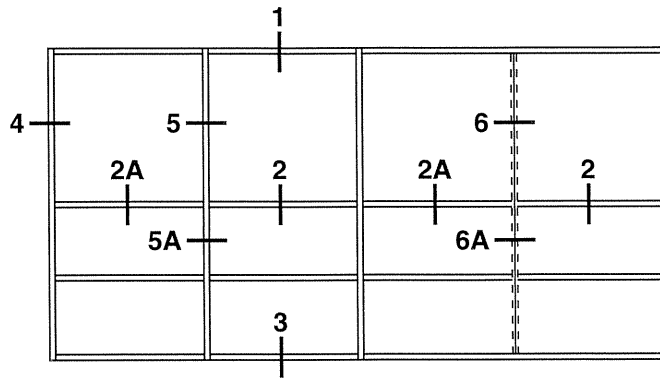
5A SPLIT MULLION W/ 1/4" ADAPTER

Laws and building and safety codes governing the design and use of glazed entrance, window, and curtain wall products vary widely. Kawneer does not control the selection of product configurations, operating hardware, or glazing materials, and assumes no responsibility therefor.

Kawneer reserves the right to change configuration without prior notice when deemed necessary for product improvement.  
© Kawneer Company, Inc., 2014

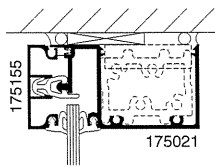
SCALE 3" = 1'-0"

NOTE: TYPE-B SYSTEM SIMILAR EXCEPT HEAD & SILL RUN THROUGH.

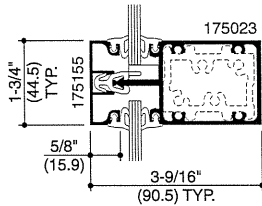


ELEVATION IS NUMBER KEYED TO DETAILS

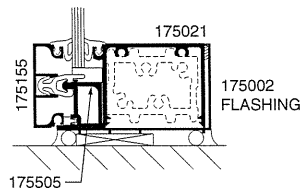
1/4" INFILL



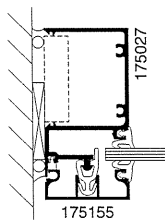
1 HEAD



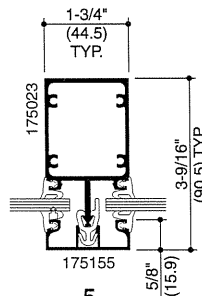
2 HORIZONTAL



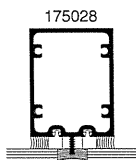
3 SILL



4 JAMB

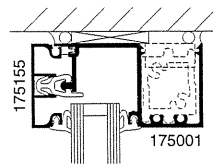


5 MULLION

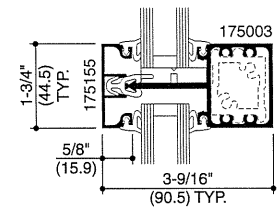


6 SSG MULLION

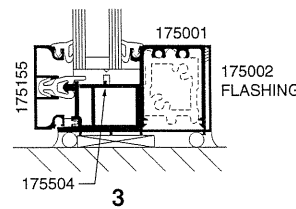
1" INFILL



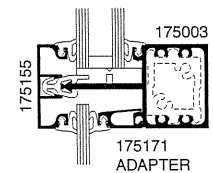
1 HEAD



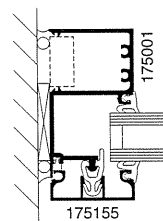
2 HORIZONTAL



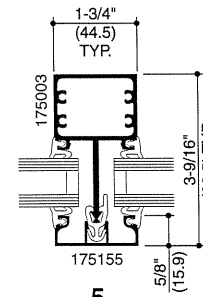
3 SILL



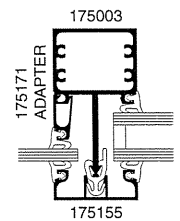
2A HORIZONTAL W/ 1/4" ADAPTER



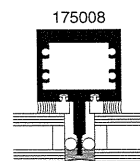
4 JAMB



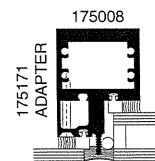
5 MULLION



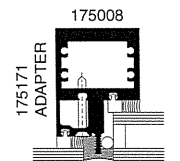
5A MULLION W/ 1/4" ADAPTER



6 SSG MULLION



6A W/ 1/4" ADAPTER INSIDE SEAL



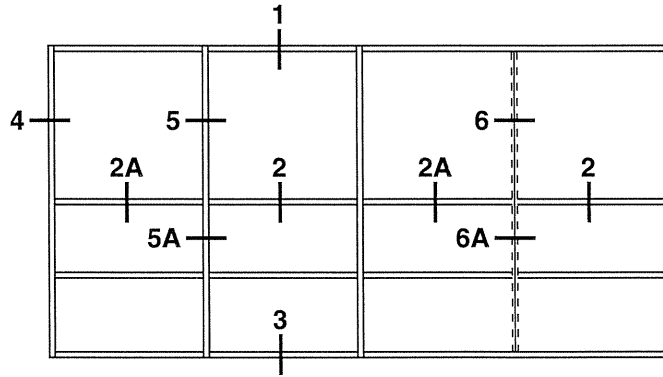
6A W/ 1/4" ADAPTER OUTSIDE SEAL

Laws and building and safety codes governing the design and use of glazed entrance, window, and curtain wall products vary widely. Kawneer does not control the selection of product configurations, operating hardware, or glazing materials, and assumes no responsibility therefor.

Kawneer reserves the right to change configuration without prior notice when deemed necessary for product improvement.  
© Kawneer Company, Inc., 2014

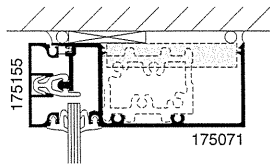
SCALE 3" = 1'-0"

NOTE: TYPE-B SYSTEM SIMILAR EXCEPT HEAD & SILL RUN THROUGH.

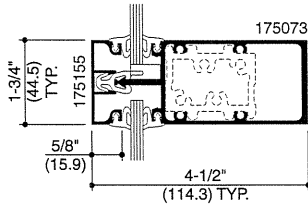


ELEVATION IS NUMBER KEYED TO DETAILS

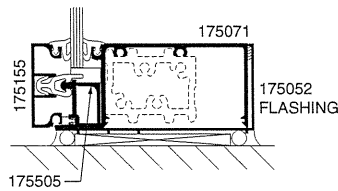
1/4" INFILL



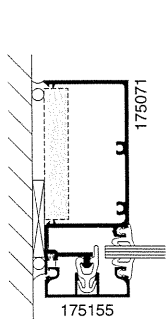
1 HEAD



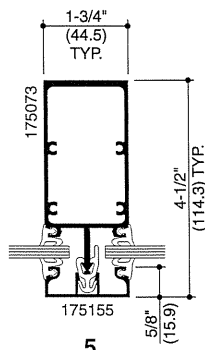
2 HORIZONTAL



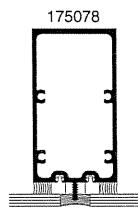
3 SILL



4 JAMB

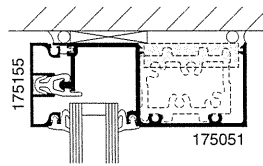


5 MULLION

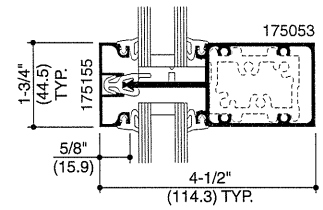


6 SSG MULLION

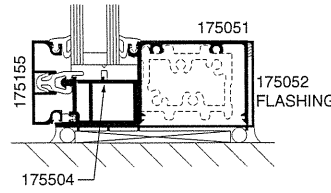
1" INFILL



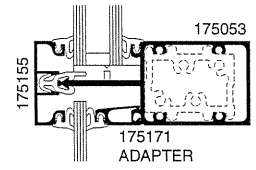
1 HEAD



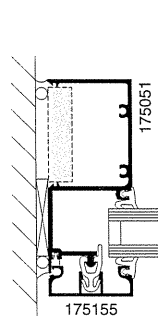
2 HORIZONTAL



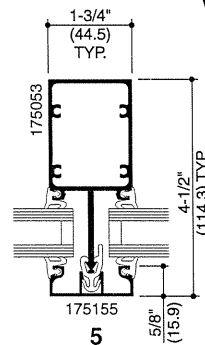
3 SILL



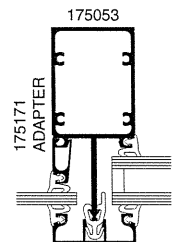
2A HORIZONTAL W/ 1/4" ADAPTER



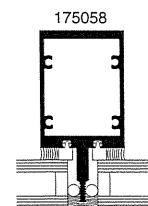
4 JAMB



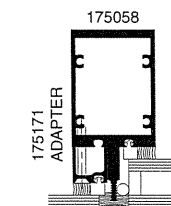
5 MULLION



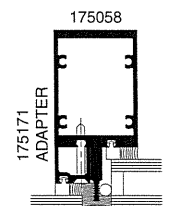
5A MULLION W/ 1/4" ADAPTER



6 SSG MULLION



6A W/ 1/4" ADAPTER INSIDE SEAL



6A W/ 1/4" ADAPTER OUTSIDE SEAL

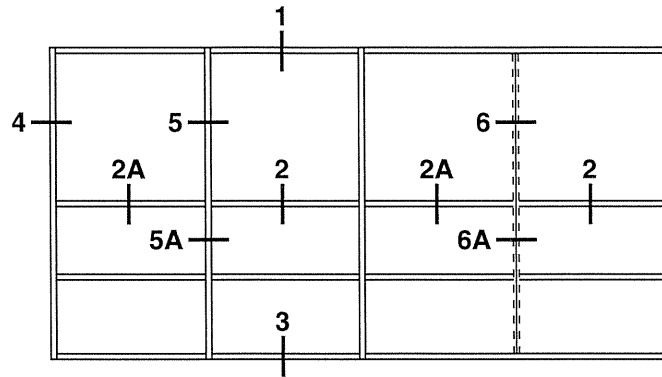
Laws and building and safety codes governing the design and use of glazed entrance, window, and curtain wall products vary widely. Kawneer does not control the selection of product configurations, operating hardware, or glazing materials, and assumes no responsibility therefor.

Kawneer reserves the right to change configuration without prior notice when deemed necessary for product improvement.

© Kawneer Company, Inc., 2014

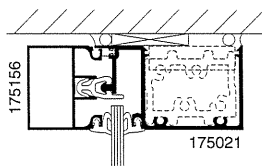
SCALE 3" = 1'-0"

NOTE: TYPE-B SYSTEM SIMILAR EXCEPT HEAD & SILL RUN THROUGH.

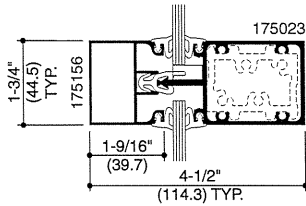


ELEVATION IS NUMBER KEYED TO DETAILS

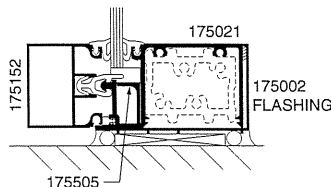
1/4" INFILL



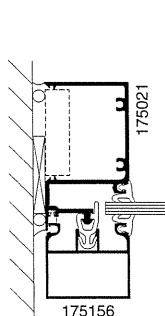
1 HEAD



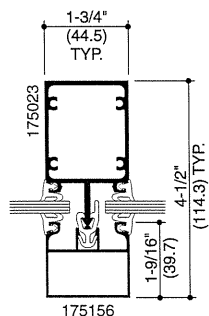
2 HORIZONTAL



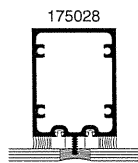
3 SILL



4 JAMB

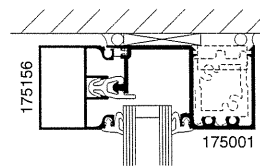


5 MULLION

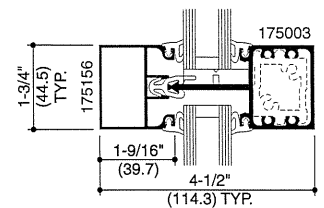


6 SSG MULLION

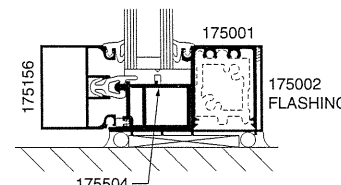
1" INFILL



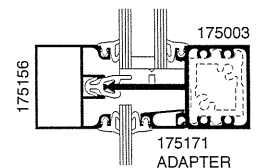
1 HEAD



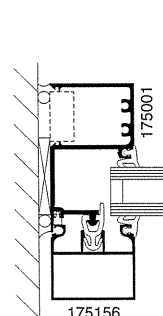
2 HORIZONTAL



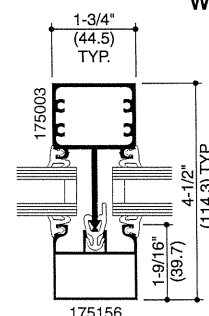
3 SILL



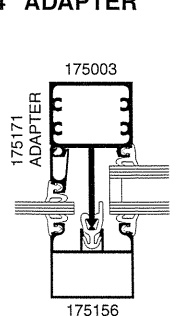
2A HORIZONTAL W/ 1/4" ADAPTER



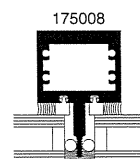
4 JAMB



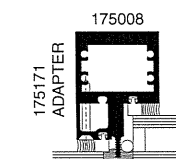
5 MULLION



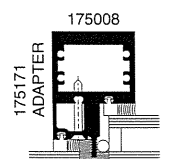
5A MULLION W/ 1/4" ADAPTER



6 SSG MULLION



6A W/ 1/4" ADAPTER INSIDE SEAL



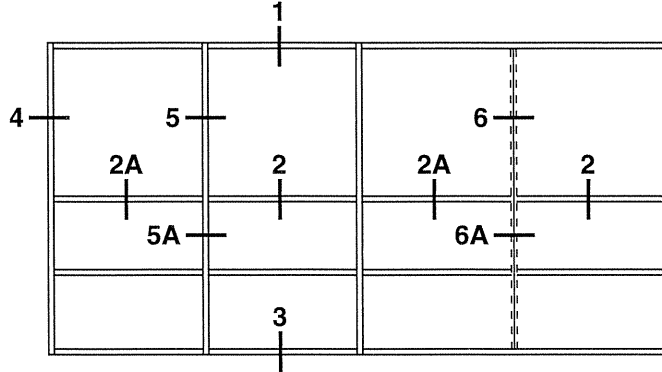
6A W/ 1/4" ADAPTER OUTSIDE SEAL

Laws and building and safety codes governing the design and use of glazed entrance, window, and curtain wall products vary widely. Kawneer does not control the selection of product configurations, operating hardware, or glazing materials, and assumes no responsibility therefor.

Kawneer reserves the right to change configuration without prior notice when deemed necessary for product improvement.  
© Kawneer Company, Inc., 2014

SCALE 3" = 1'-0"

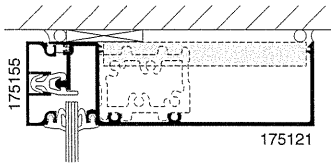
NOTE: TYPE-B SYSTEM SIMILAR EXCEPT HEAD & SILL RUN THROUGH.



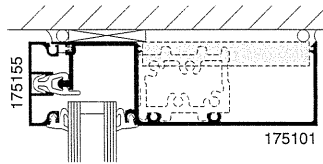
ELEVATION IS NUMBER KEYED TO DETAILS

1/4" INFILL

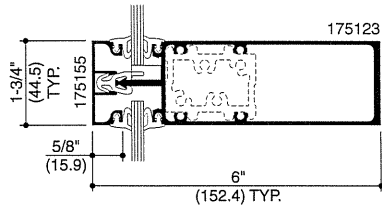
1" INFILL



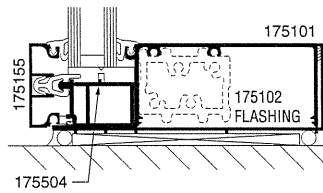
1 HEAD



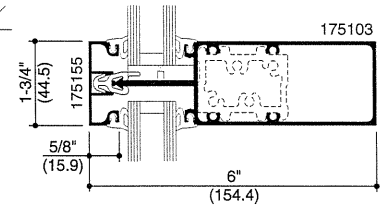
1 HEAD



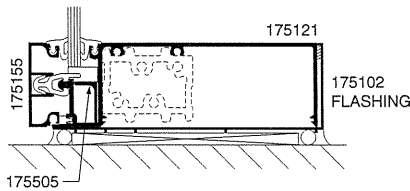
2 HORIZONTAL



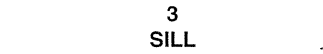
2 HORIZONTAL



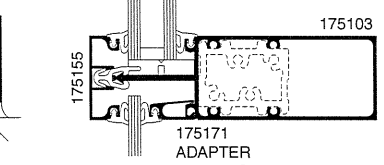
2 HORIZONTAL



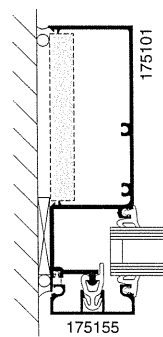
3 SILL



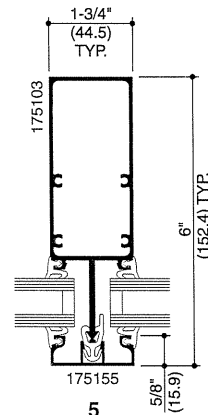
3 SILL



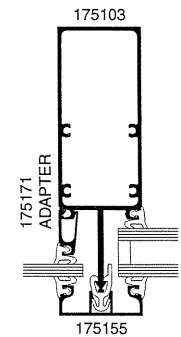
2A HORIZONTAL W/ 1/4" ADAPTER



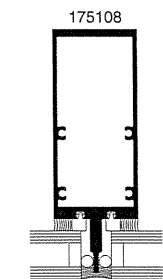
4 JAMB



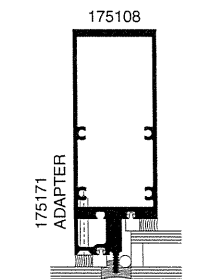
5 MULLION



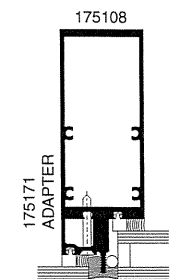
5A MULLION W/ 1/4" ADAPTER



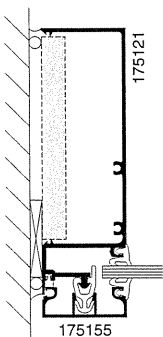
6 SSG MULLION



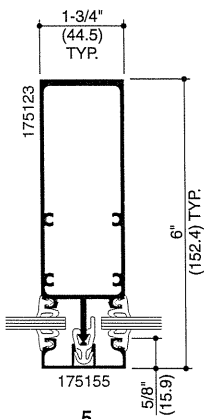
6A W/ 1/4" ADAPTER INSIDE SEAL



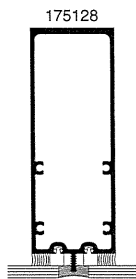
6A W/ 1/4" ADAPTER OUTSIDE SEAL



4 JAMB



5 MULLION



6 SSG MULLION

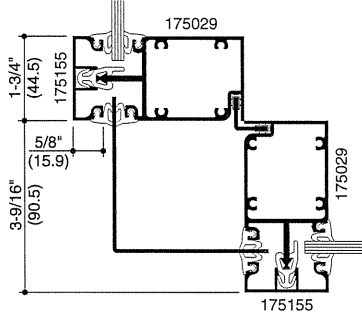
Laws and building and safety codes governing the design and use of glazed entrance, window, and curtain wall products vary widely. Kawneer does not control the selection of product configurations, operating hardware, or glazing materials, and assumes no responsibility therefor.

Kawneer reserves the right to change configuration without prior notice when deemed necessary for product improvement. © Kawneer Company, Inc., 2014

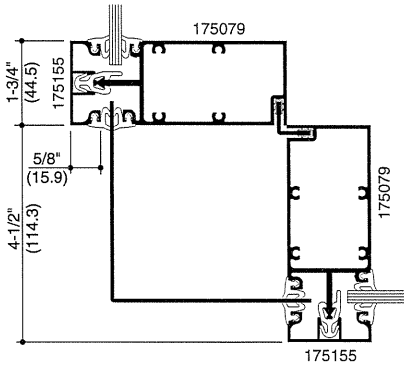
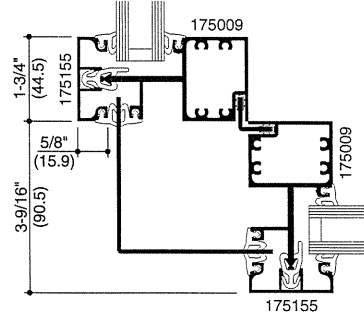
SCALE 3" = 1'-0"

1/4" INFILL

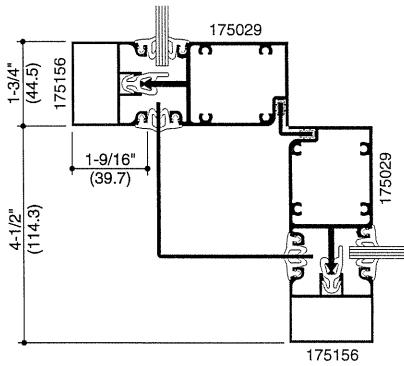
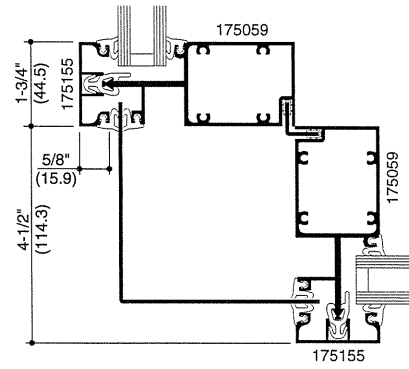
1" INFILL



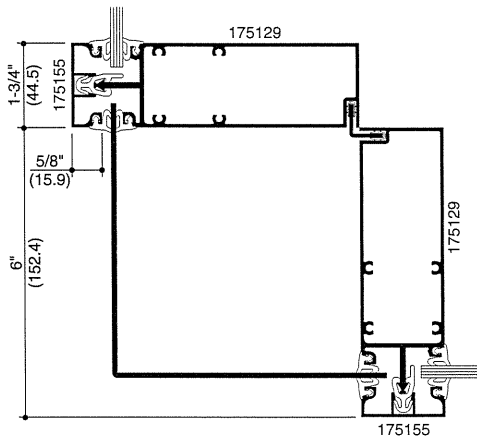
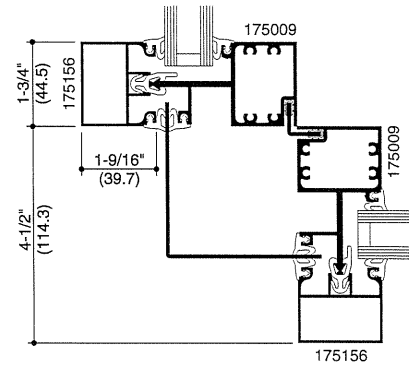
3-9/16" SYSTEM



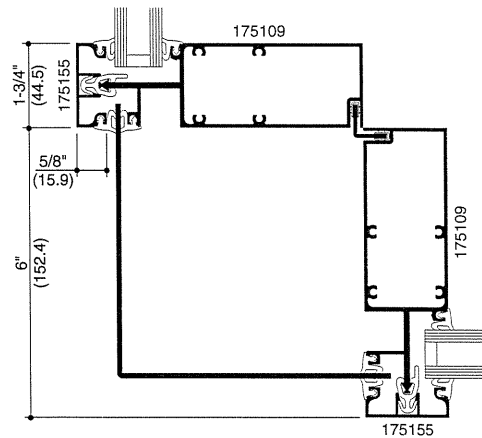
4-1/2" SYSTEM



4-1/2" SYSTEM  
CENTER GLAZED



6" SYSTEM

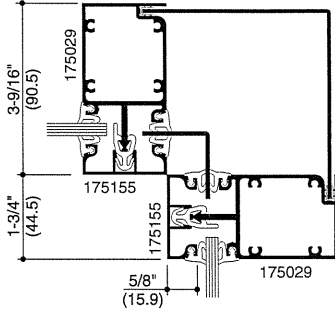


Laws and building and safety codes governing the design and use of glazed entrance, window, and curtain wall products vary widely. Kawneer does not control the selection of product configurations, operating hardware, or glazing materials, and assumes no responsibility therefor.

Kawneer reserves the right to change configuration without prior notice when deemed necessary for product improvement.  
© Kawneer Company, Inc., 2014

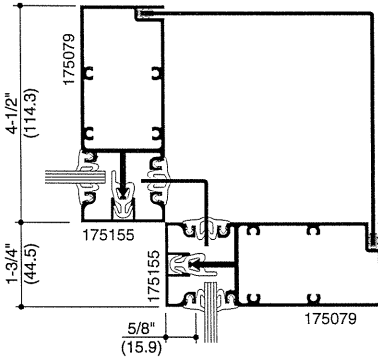
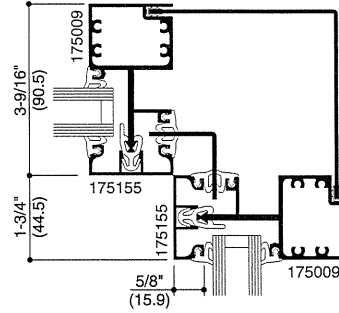
SCALE 3" = 1'-0"

1/4" INFILL

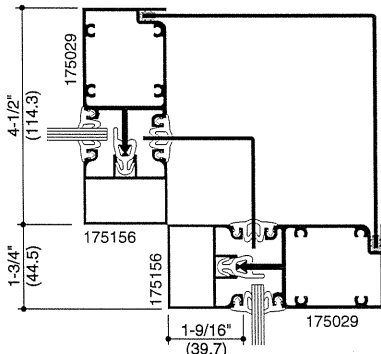
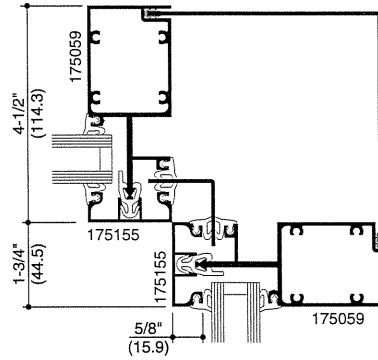


3-9/16" SYSTEM

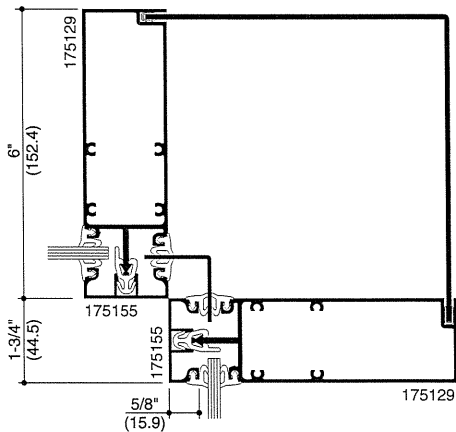
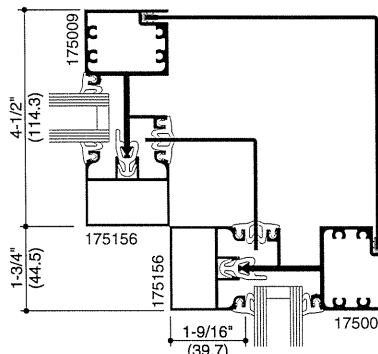
1" INFILL



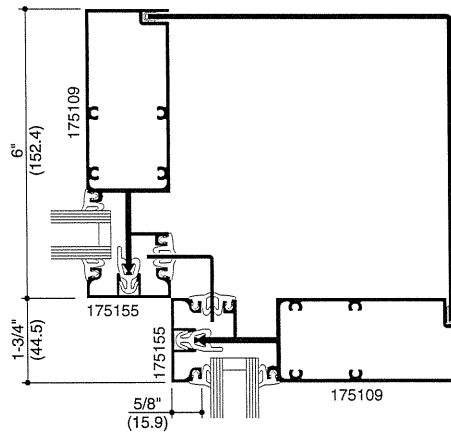
4-1/2" SYSTEM



4-1/2" SYSTEM CENTER GLAZED



6" SYSTEM



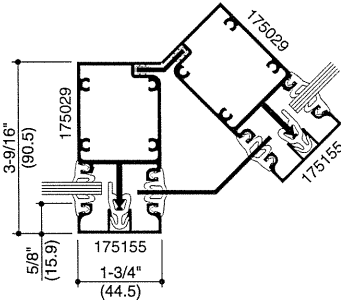
Laws and building and safety codes governing the design and use of glazed entrance, window, and curtain wall products vary widely. Kawneer does not control the selection of product configurations, operating hardware, or glazing materials, and assumes no responsibility therefor.

Kawneer reserves the right to change configuration without prior notice when deemed necessary for product improvement.  
© Kawneer Company, Inc., 2014

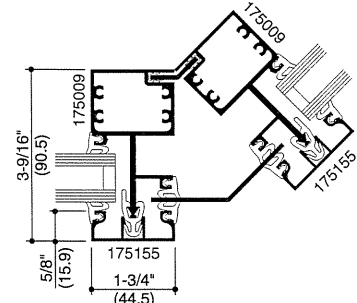


SCALE 3" = 1'-0"

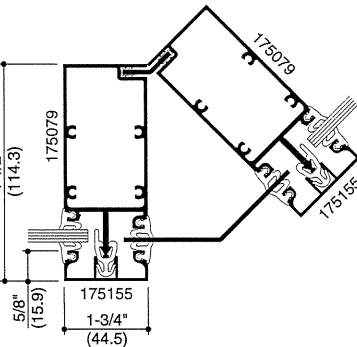
1/4" INFILL



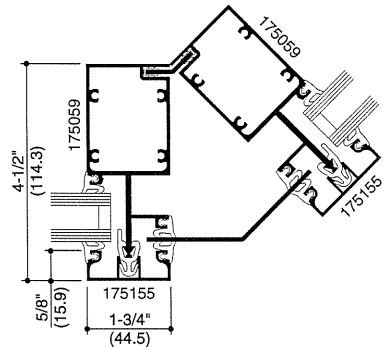
3-9/16" SYSTEM



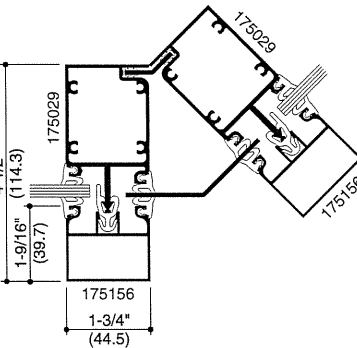
4-1/2" SYSTEM



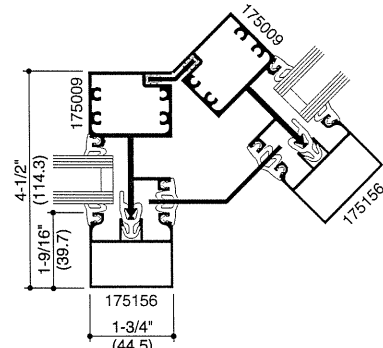
4-1/2" SYSTEM



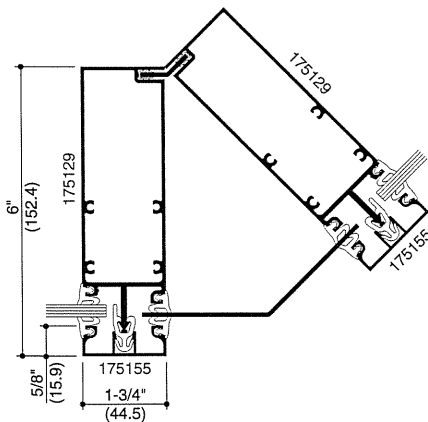
4-1/2" SYSTEM CENTER GLAZED



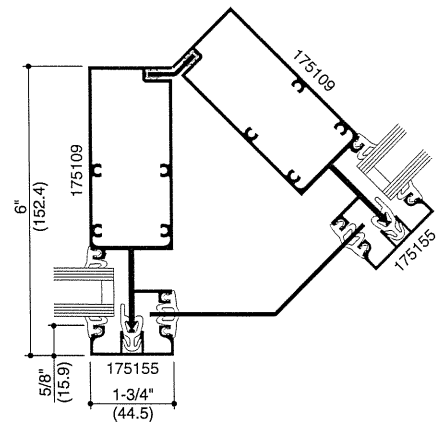
4-1/2" SYSTEM CENTER GLAZED



6" SYSTEM



6" SYSTEM



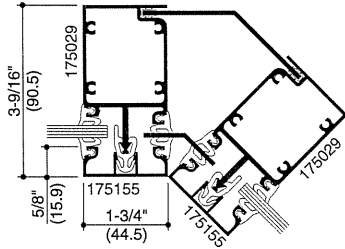
Laws and building and safety codes governing the design and use of glazed entrance, window, and curtain wall products vary widely. Kawneer does not control the selection of product configurations, operating hardware, or glazing materials, and assumes no responsibility therefor.

Kawneer reserves the right to change configuration without prior notice when deemed necessary for product improvement.

© Kawneer Company, Inc., 2014

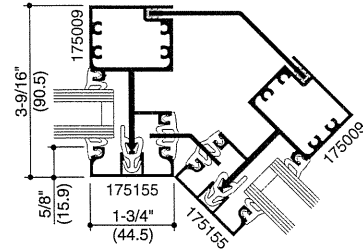
SCALE 3" = 1'-0"

1/4" INFILL

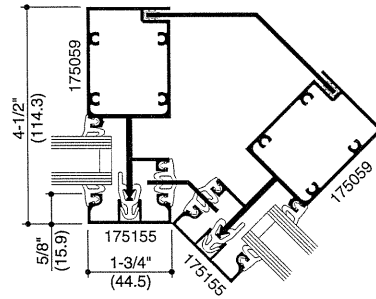
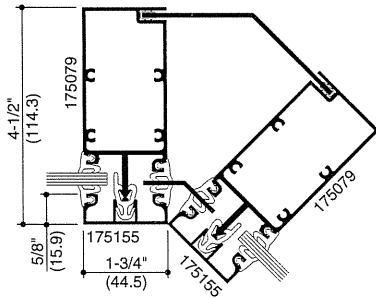


3-9/16" SYSTEM

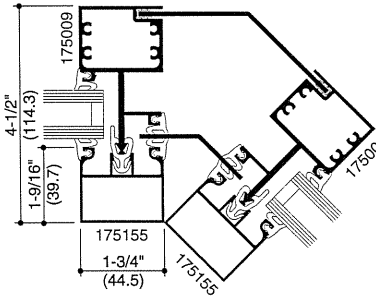
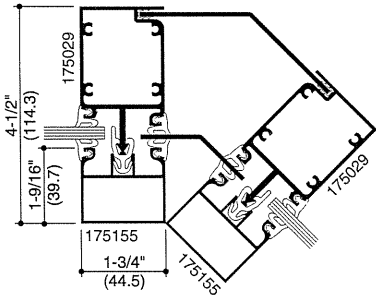
1" INFILL



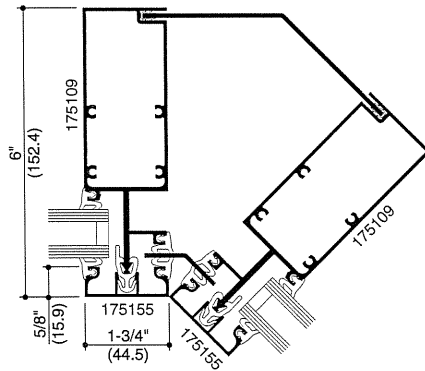
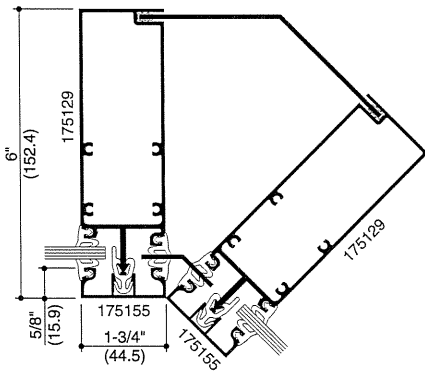
4-1/2" SYSTEM



4-1/2" SYSTEM CENTER GLAZED



6" SYSTEM

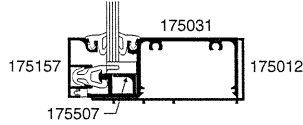


Laws and building and safety codes governing the design and use of glazed entrance, window, and curtain wall products vary widely. Kawneer does not control the selection of product configurations, operating hardware, or glazing materials, and assumes no responsibility therefor.

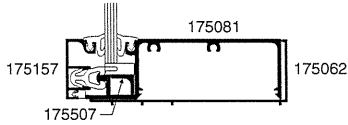
Kawneer reserves the right to change configuration without prior notice when deemed necessary for product improvement.  
© Kawneer Company, Inc., 2014

SCALE 3" = 1'-0"

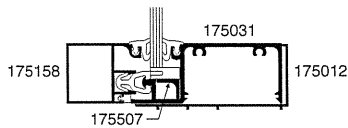
1-1/4" NARROW PERIMETER  
SCREW SPLINE SYSTEM  
WITH 1/4" INFILL



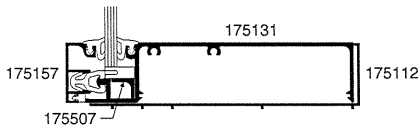
3-9/16" SYSTEM



4-1/2" SYSTEM

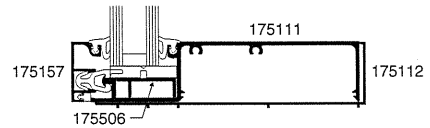
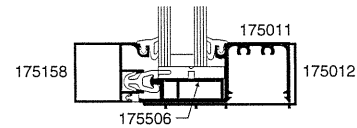
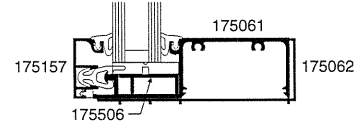
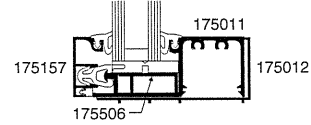


4-1/2" SYSTEM  
CENTER GLAZED



6" SYSTEM

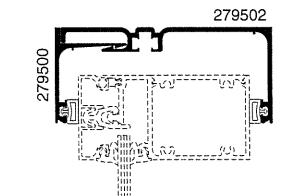
1-1/4" NARROW PERIMETER  
SCREW SPLINE SYSTEM  
WITH 1" INFILL



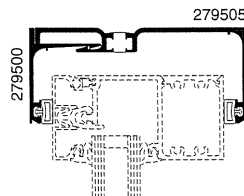
Laws and building and safety codes governing the design and use of glazed entrance, window, and curtain wall products vary widely. Kawneer does not control the selection of product configurations, operating hardware, or glazing materials, and assumes no responsibility therefor.

Kawneer reserves the right to change configuration without prior notice when deemed necessary for product improvement.  
© Kawneer Company, Inc., 2014

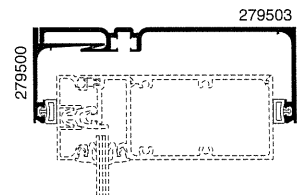
HEAD RECEPTORS



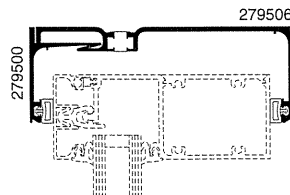
3-9/16" NON-THERMAL



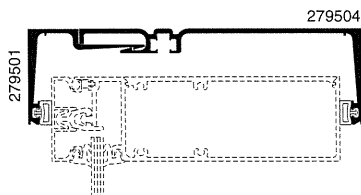
3-9/16" THERMAL



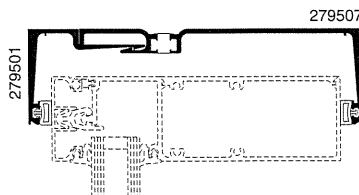
4-1/2" NON-THERMAL



4-1/2" THERMAL

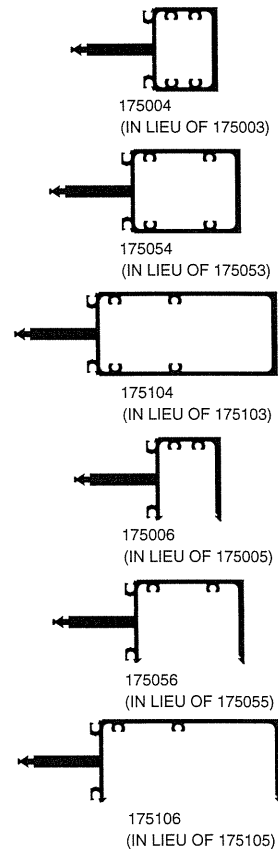


6" NON-THERMAL



6" THERMAL

HEAVY MULLIONS

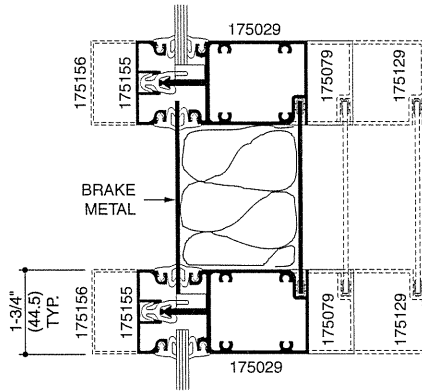


NOTE:  
HEAVY MULLIONS CAN BE USED WITH  
STANDARD FACE COVERS 175155 & 175156

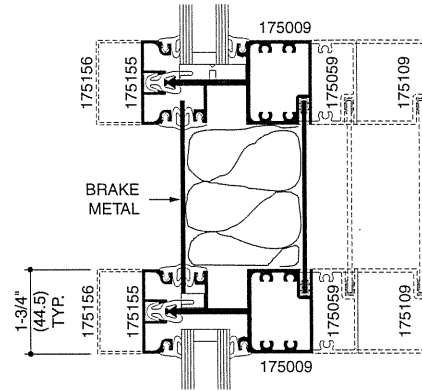
SCALE 3" = 1'-0"

**HORIZONTAL / CROSSRAIL ASSEMBLY  
(SCREW SPLINE SYSTEM)**

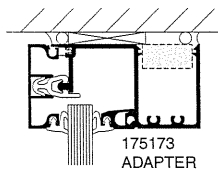
**1/4" INFILL**



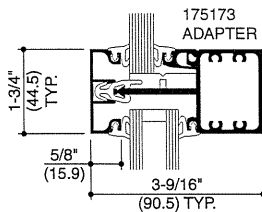
**1" INFILL**



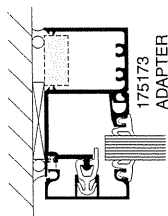
**1/2" INFILL ADAPTER  
(SHOWN WITH 3-9/16" DEEP SYSTEM)**



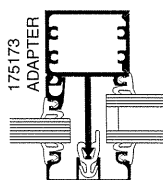
**HEAD**



**HORIZONTAL**



**JAMB**



**MULLION**

**EnCORE™ GLAZING CHART**

INFILL THICKNESS	ADAPTER for 1" Infill Pocket	WEATHERING (Both Sides)
1/8"	175171	027077 Heavy
1/4"	175171	027074 Standard
3/8"	175171	027076 Light
1/2"	175173	027074 Standard
5/8"	175173	027076 Light
3/4"	175175	027074 Standard
7/8"	-	027077 Heavy
1"	-	027074 Standard
1-1/8"	-	027076 Light

**NOTE:** For infill thicknesses in 1/16" increments or oversize glass, use a combination of the Std. (027074) with either the Light (27076) or the Heavy (027077) gaskets.

**SSG GLAZING CHART**

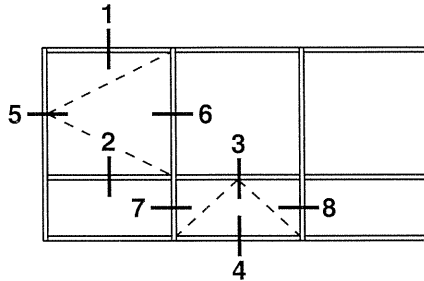
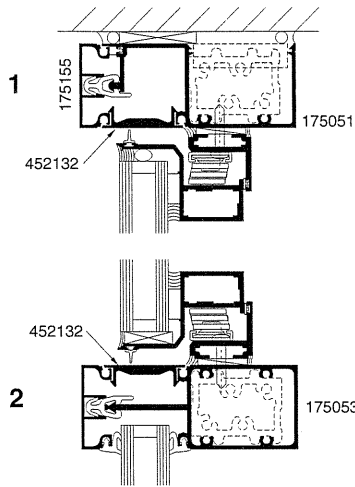
INFILL THICKNESS	SSG ADAPTER	HORIZONTAL WEATHERING	SSG WEATHERING
1/4"	175172	027074 Std.	175302
1/2"	175173	027074 Std.	175302

Laws and building and safety codes governing the design and use of glazed entrance, window, and curtain wall products vary widely. Kawneer does not control the selection of product configurations, operating hardware, or glazing materials, and assumes no responsibility therefor.

Kawneer reserves the right to change configuration without prior notice when deemed necessary for product improvement.  
© Kawneer Company, Inc., 2014

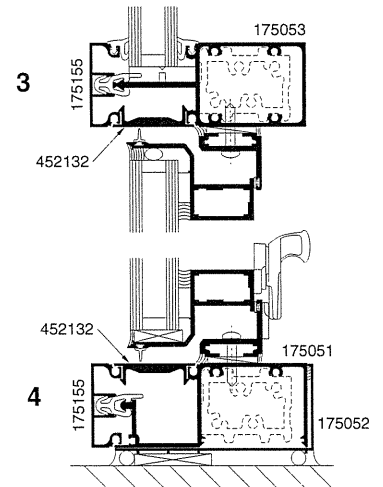
SCALE 3" = 1'-0"

**OUTSWING CASEMENT**

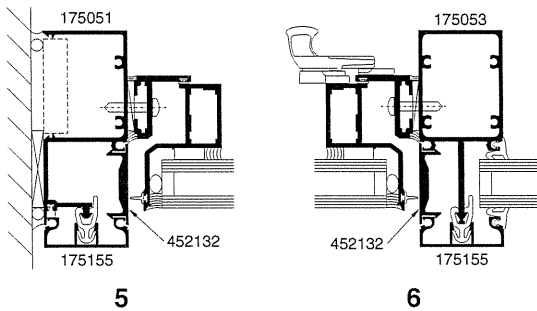


ELEVATION IS NUMBER KEYED TO DETAILS

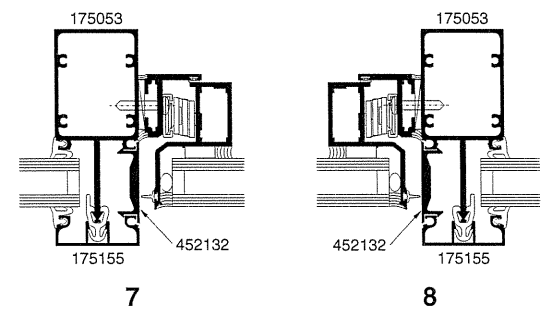
**PROJECT-OUT**



**OUTSWING CASEMENT**



**PROJECT-OUT**



**NOTE:** Bronze spacer is recommended when 1" insulating glass is used.

**MAXIMUM / MINIMUM SIZES (1" INFILL)**

**PROJECT-OUT**                      MAXIMUM 60" x 36"  
MINIMUM 14" x 14"

**OUTSWING CASEMENT**            MAXIMUM 36" x 60"  
MINIMUM 14" x 14"

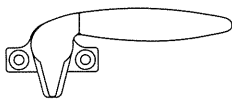
Laws and building and safety codes governing the design and use of glazed entrance, window, and curtain wall products vary widely. Kawneer does not control the selection of product configurations, operating hardware, or glazing materials, and assumes no responsibility therefor.

Kawneer reserves the right to change configuration without prior notice when deemed necessary for product improvement.  
© Kawneer Company, Inc., 2014

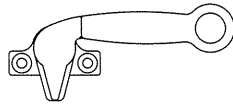
**GLASSvent™ FOR STOREFRONT HARDWARE SELECTION GUIDE**

DESCRIPTION	PROJECT - OUT	OUTSWING CASEMENT
Stainless steel 4-bar hinge	STANDARD	STANDARD
Cast white bronze cam lock	STANDARD	STANDARD
Cast white bronze cam lock with pole ring	OPTIONAL	OPTIONAL
Cast white bronze custodial lock with removable handle	OPTIONAL	OPTIONAL
Cast white bronze concealed lock with removable hex key	OPTIONAL	OPTIONAL
Cast white bronze pole/pull ring	OPTIONAL	
Pivot-shoe roto-operator	OPTIONAL	
Multi-point lock with cast white bronze locking handle		OPTIONAL
Insect screen	OPTIONAL	OPTIONAL

Laws and building and safety codes governing the design and use of glazed entrance, window, and curtain wall products vary widely. Kawneer does not control the selection of product configurations, operating hardware, or glazing materials, and assumes no responsibility therefor.



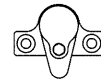
**CAM LOCK**



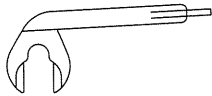
**CAM LOCK WITH POLE RING**



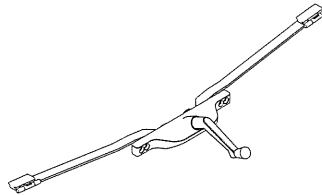
**PULL RING**



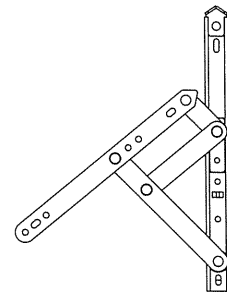
**ACCESS CONTROL LOCK**



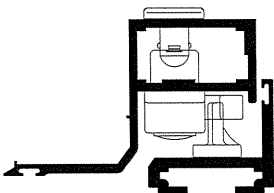
**REMOVABLE HANDLE**



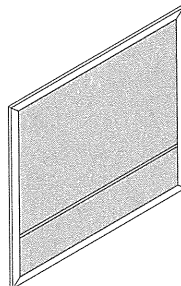
**PIVOT-SHOE ROTO-OPERATOR**



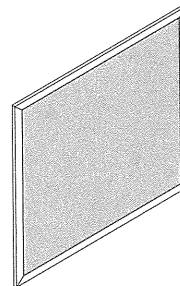
**STAINLESS STEEL 4 BAR HINGES**



**CONCEALED LOCK**



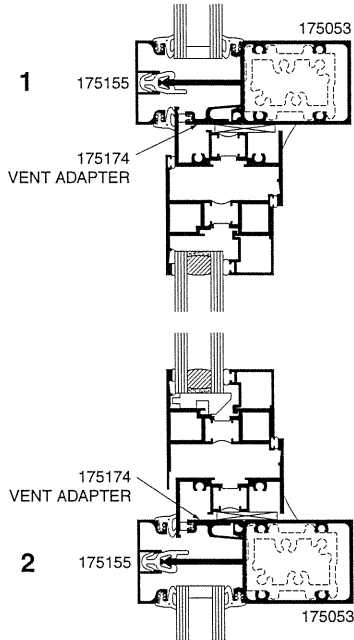
**INSECT SCREEN WITH STANDARD WICKET**



**INSECT SCREEN WITH FULL WICKET**

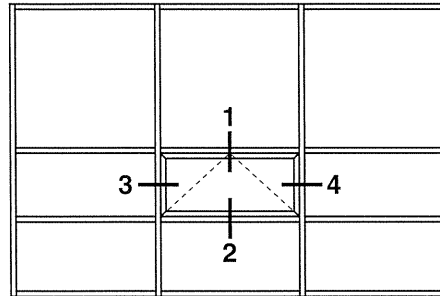
Kawneer reserves the right to change configuration without prior notice when deemed necessary for product improvement.  
 © Kawneer Company, Inc., 2014

SCALE 3" = 1'-0"

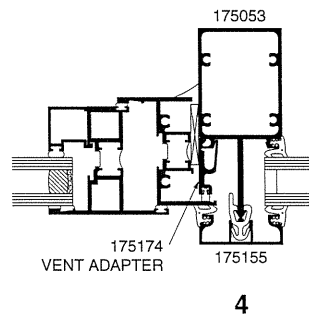
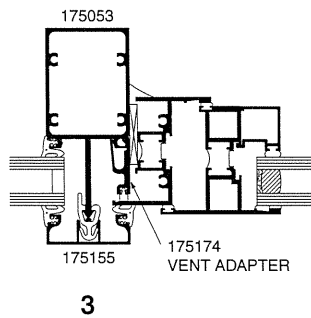


8225TL IsoLock™ WINDOW SHOWN

NOTE: Other vent types can be accommodated. Consult your Kawneer Representative for other options.



ELEVATION IS NUMBER KEYED TO DETAILS



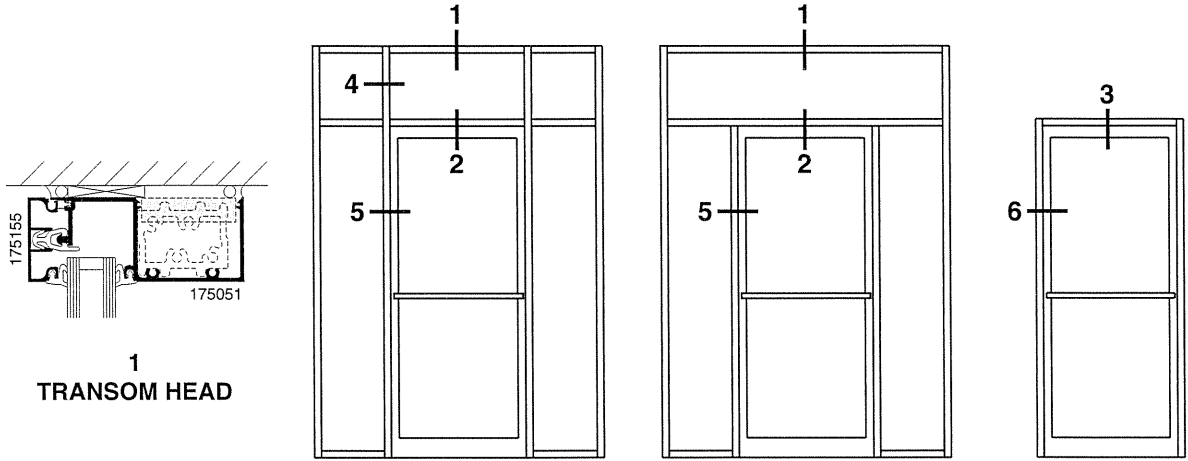
Laws and building and safety codes governing the design and use of glazed entrance, window, and curtain wall products vary widely. Kawneer does not control the selection of product configurations, operating hardware, or glazing materials, and assumes no responsibility therefor.

Kawneer reserves the right to change configuration without prior notice when deemed necessary for product improvement.  
© Kawneer Company, Inc., 2014

SCALE 3" = 1'-0"

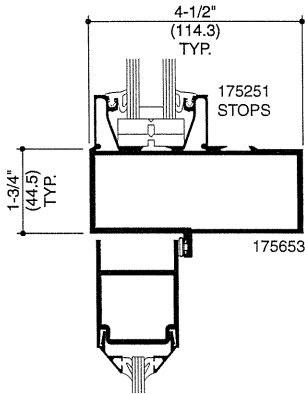
EnCORE™ FRAMING INCORPORATING KAWNEER "190" DOORS.

NOTE: Other types of Kawneer doors may be used with this framing. See the Entrance Section for additional information.

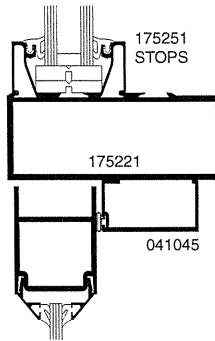


1  
TRANSOM HEAD

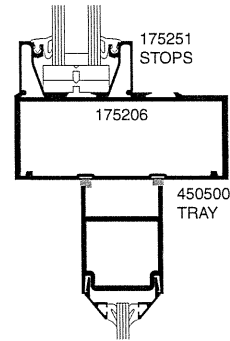
ELEVATION IS NUMBER KEYS TO DETAILS



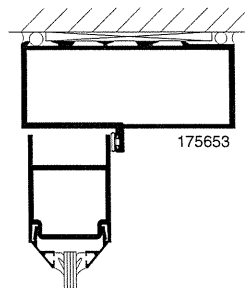
2  
OFFSET PIVOT/  
BUTT HUNG  
TRANSOM BAR



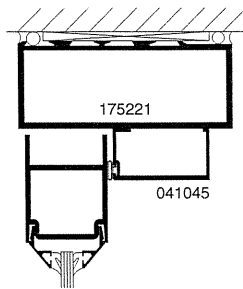
2  
S/A OFFSET ARM  
OFFSET PIVOT/  
BUTT HUNG  
TRANSOM BAR



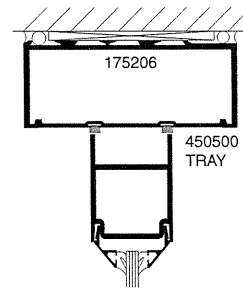
2  
C.O.C.  
CENTER PIVOT  
TRANSOM BAR



3  
OFFSET PIVOT/  
BUTT HUNG  
HEADER



3  
S/A OFFSET ARM  
OFFSET PIVOT/  
BUTT HUNG  
HEADER



3  
C.O.C.  
CENTER PIVOT  
HEADER

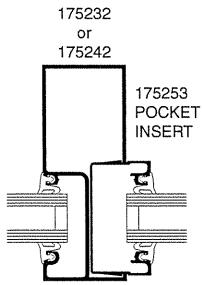
Laws and building and safety codes governing the design and use of glazed entrance, window, and curtain wall products vary widely. Kawneer does not control the selection of product configurations, operating hardware, or glazing materials, and assumes no responsibility therefor.

Kawneer reserves the right to change configuration without prior notice when deemed necessary for product improvement.  
© Kawneer Company, Inc., 2014

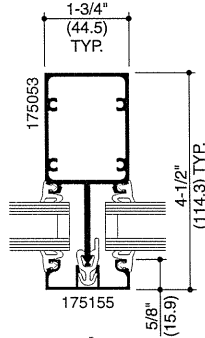


SCALE 3" = 1'-0"

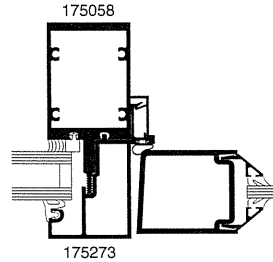
Transom area for both double or single acting doors with glass surround. Jambs above transom area are routed out to accept pocket insert 175253.



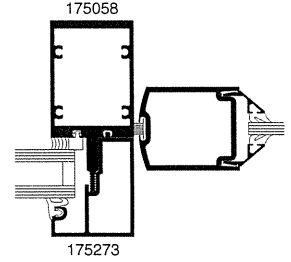
4  
DOOR JAMB  
AT TRANSOM



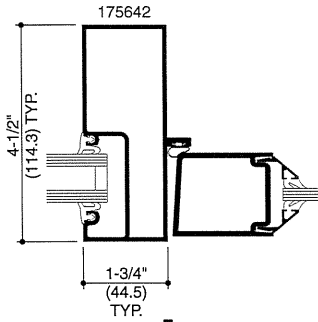
4  
DOOR JAMB  
AT TRANSOM  
(OPTIONAL)



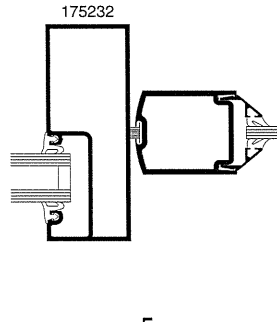
5  
SINGLE ACTING  
SSG DOOR JAMB  
W/ DOOR ADAPTER



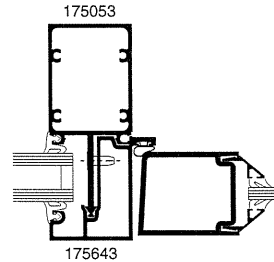
5  
DOUBLE ACTING  
SSG DOOR JAMB  
W/ DOOR ADAPTER



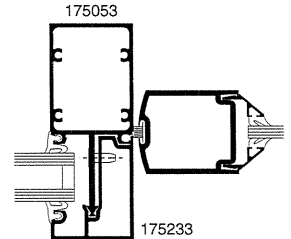
5  
SINGLE ACTING  
DOOR JAMB



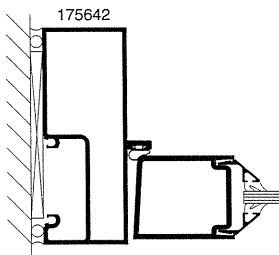
5  
DOUBLE ACTING  
DOOR JAMB



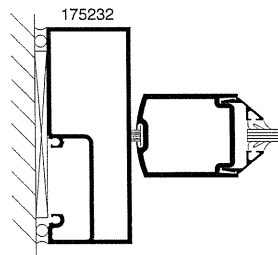
5  
SINGLE ACTING  
DOOR JAMB  
W/ DOOR ADAPTER



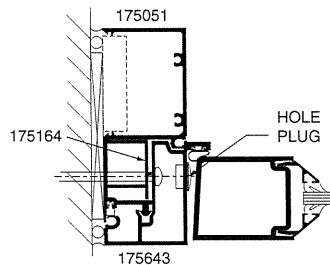
5  
DOUBLE ACTING  
DOOR JAMB  
W/ DOOR ADAPTER



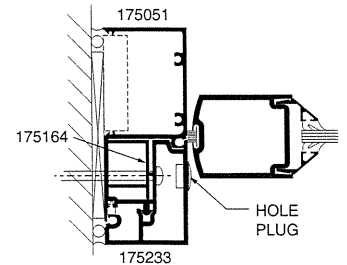
6  
SINGLE ACTING  
DOOR JAMB



6  
DOUBLE ACTING  
DOOR JAMB



6  
SINGLE ACTING  
DOOR JAMB  
W/ DOOR ADAPTER



6  
DOUBLE ACTING  
DOOR JAMB  
W/ DOOR ADAPTER

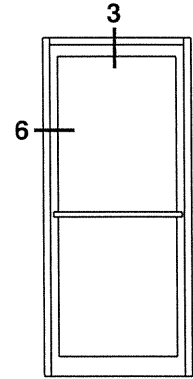
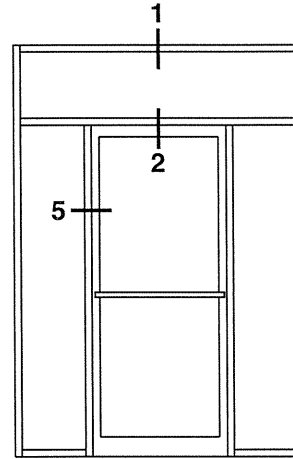
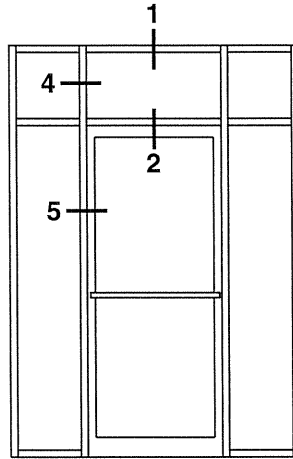
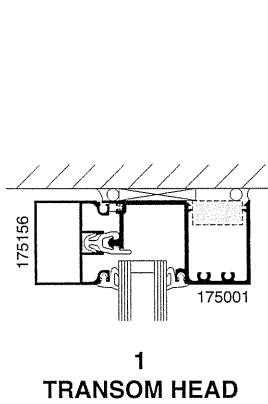
Laws and building and safety codes governing the design and use of glazed entrance, window, and curtain wall products vary widely. Kawneer does not control the selection of product configurations, operating hardware, or glazing materials, and assumes no responsibility therefor.

Kawneer reserves the right to change configuration without prior notice when deemed necessary for product improvement.  
© Kawneer Company, Inc., 2014

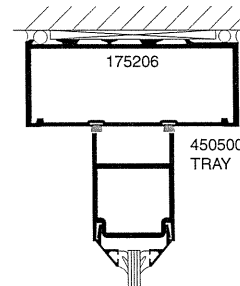
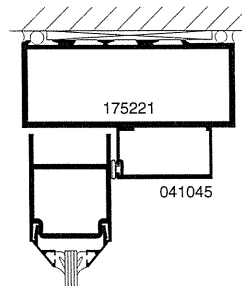
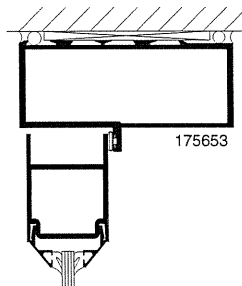
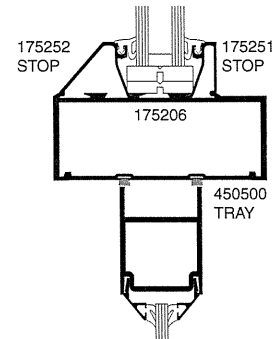
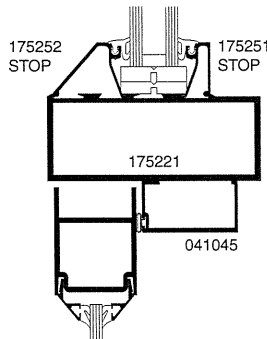
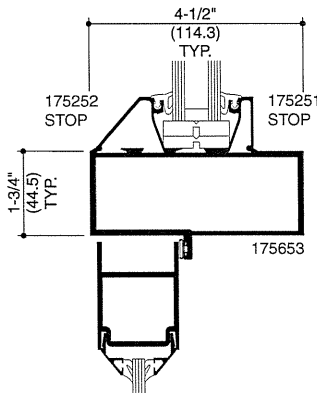
SCALE 3" = 1'-0"

EnCORE™ FRAMING INCORPORATING KAWNEER "190" DOORS.

**NOTE:** Other types of Kawneer doors may be used with this framing. See the Entrance Section for additional information.



ELEVATION IS NUMBER KEYED TO DETAILS

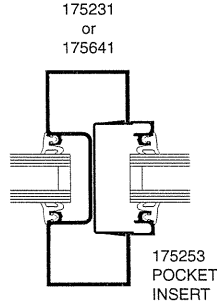


Vertical text on the right side of the page: Laws and building and safety codes governing the design and use of glazed entrance, window, and curtain wall products vary widely. Kawneer does not control the selection of product configurations, operating hardware, or glazing materials, and assumes no responsibility therefor.

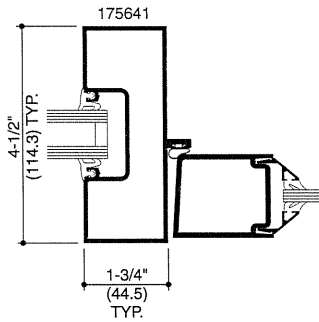
Vertical text on the right side of the page: Kawneer reserves the right to change configuration without prior notice when deemed necessary for product improvement. © Kawneer Company, Inc., 2014

SCALE 3" = 1'-0"

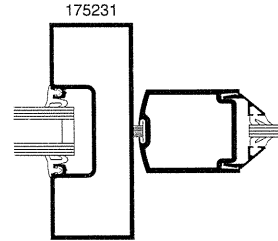
Transom area for both double or single acting doors with glass surround. Jambs above transom area are routed out to accept pocket insert 175253.



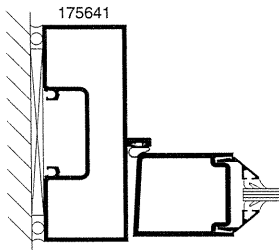
4  
DOOR JAMB  
AT TRANSOM



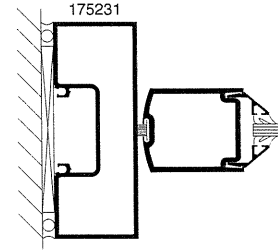
5  
SINGLE ACTING  
DOOR JAMB



5  
DOUBLE ACTING  
DOOR JAMB



6  
SINGLE ACTING  
DOOR JAMB



6  
DOUBLE ACTING  
DOOR JAMB

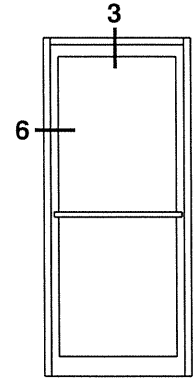
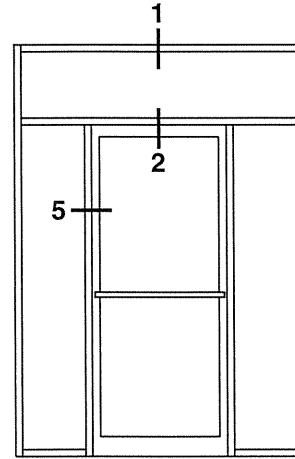
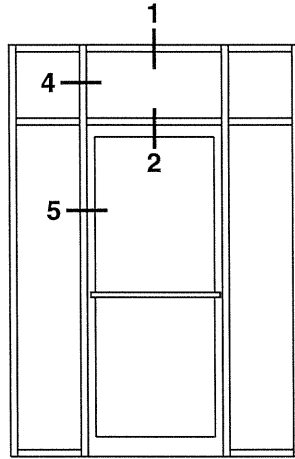
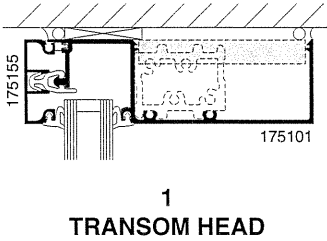
Laws and building and safety codes governing the design and use of glazed entrance, window, and curtain wall products vary widely. Kawneer does not control the selection of product configurations, operating hardware, or glazing materials, and assumes no responsibility therefor.

Kawneer reserves the right to change configuration without prior notice when deemed necessary for product improvement.  
© Kawneer Company, Inc., 2014

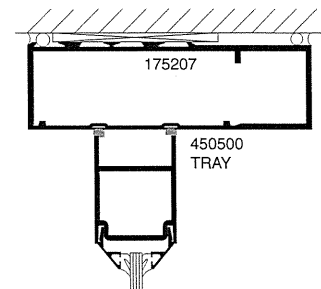
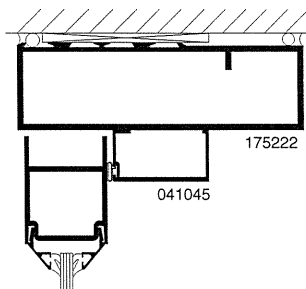
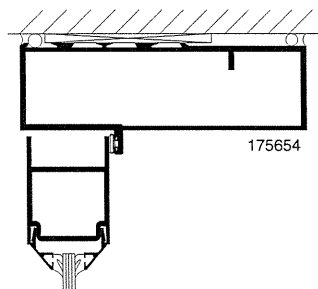
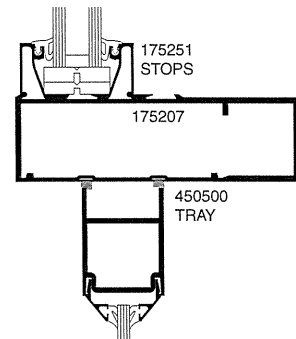
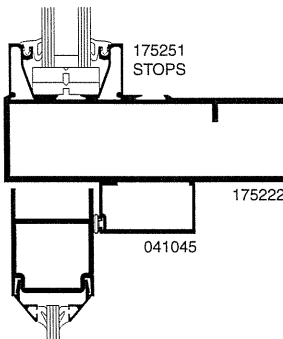
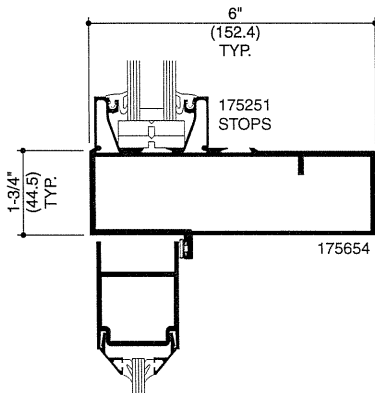
SCALE 3" = 1'-0"

EnCORE™ FRAMING INCORPORATING KAWNEER "190" DOORS.

NOTE: Other types of Kawneer doors may be used with this framing. See the Entrance Section for additional information.



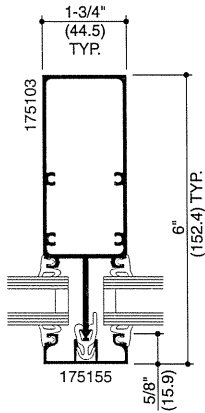
ELEVATION IS NUMBER KEYED TO DETAILS



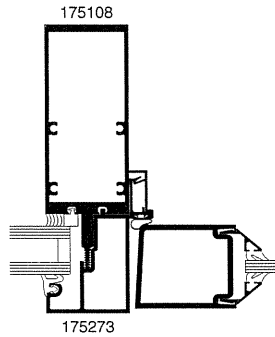
Laws and building and safety codes governing the design and use of glazed entrance, window, and curtain wall products vary widely. Kawneer does not control the selection of product configurations, operating hardware, or glazing materials, and assumes no responsibility therefor.

Kawneer reserves the right to change configuration without prior notice when deemed necessary for product improvement.  
© Kawneer Company, Inc., 2014

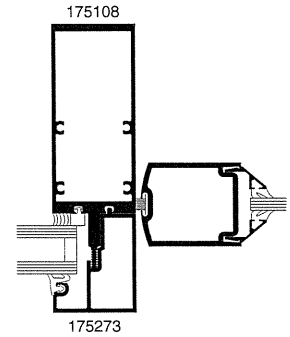
SCALE 3" = 1'-0"



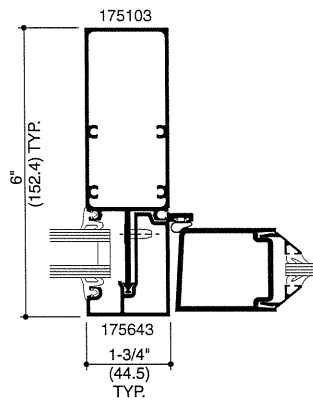
**4**  
**DOOR JAMB**  
**AT TRANSOM**



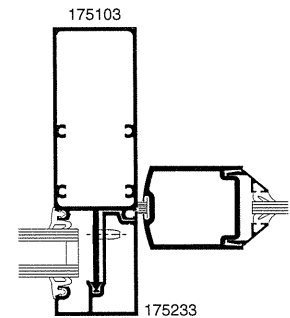
**5**  
**SINGLE ACTING**  
**SSG DOOR JAMB**  
**W/ DOOR ADAPTER**



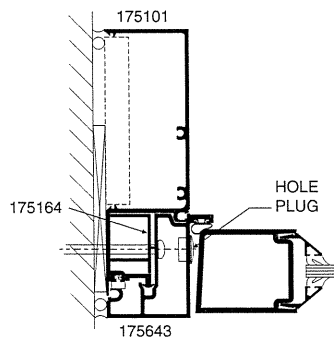
**5**  
**DOUBLE ACTING**  
**SSG DOOR JAMB**  
**W/ DOOR ADAPTER**



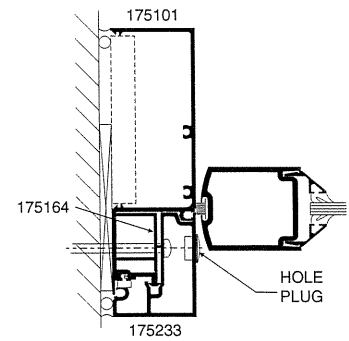
**5**  
**SINGLE ACTING**  
**DOOR JAMB**  
**W/ DOOR ADAPTER**



**5**  
**DOUBLE ACTING**  
**DOOR JAMB**  
**W/ DOOR ADAPTER**



**6**  
**SINGLE ACTING**  
**DOOR JAMB**  
**W/ DOOR ADAPTER**



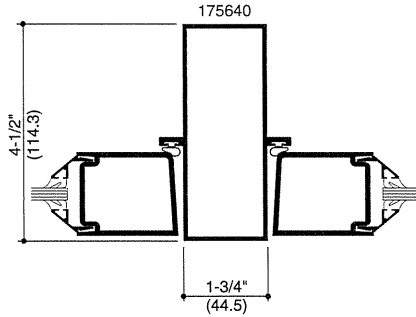
**6**  
**DOUBLE ACTING**  
**DOOR JAMB**  
**W/ DOOR ADAPTER**

Laws and building and safety codes governing the design and use of glazed entrance, window, and curtain wall products vary widely. Kawneer does not control the selection of product configurations, operating hardware, or glazing materials, and assumes no responsibility therefor.

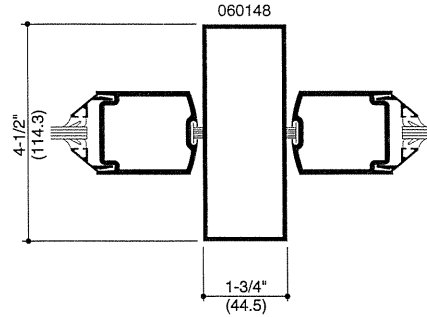
Kawneer reserves the right to change configuration without prior notice when deemed necessary for product improvement.  
© Kawneer Company, Inc., 2014

SCALE 3" = 1'-0"

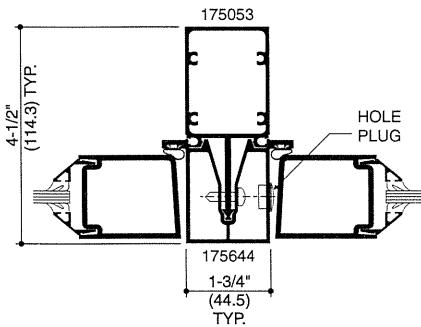
COMMON DOOR JAMBS



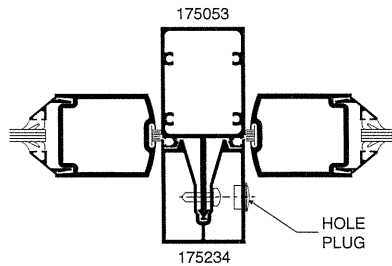
SINGLE ACTING DOOR JAMB



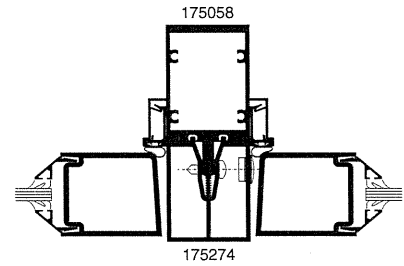
DOUBLE ACTING DOOR JAMB



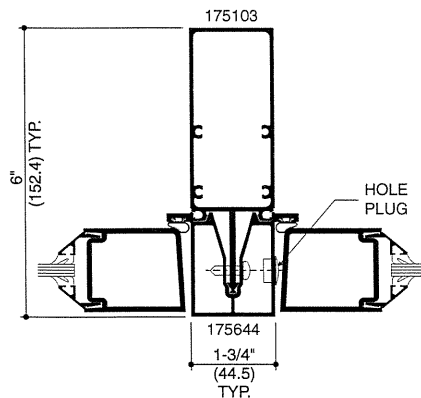
SINGLE ACTING DOOR JAMB W/ DOOR ADAPTER



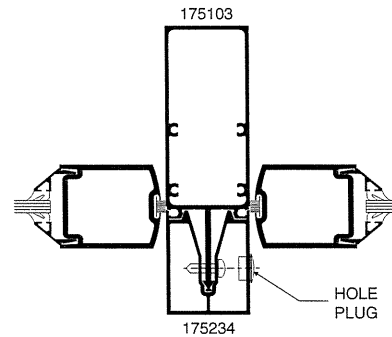
DOUBLE ACTING DOOR JAMB W/ DOOR ADAPTER



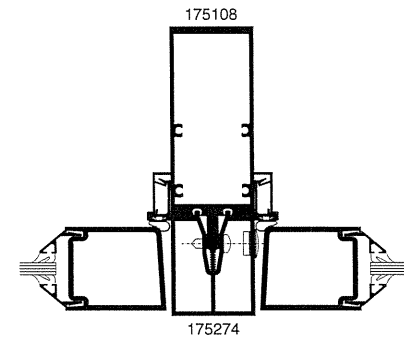
SINGLE ACTING SSG DOOR JAMB W/ DOOR ADAPTER



SINGLE ACTING DOOR JAMB W/ DOOR ADAPTER



DOUBLE ACTING DOOR JAMB W/ DOOR ADAPTER



SINGLE ACTING SSG DOOR JAMB W/ DOOR ADAPTER

Laws and building and safety codes governing the design and use of glazed entrance, window, and curtain wall products vary widely. Kawneer does not control the selection of product configurations, operating hardware, or glazing materials, and assumes no responsibility therefor.

Kawneer reserves the right to change configuration without prior notice when deemed necessary for product improvement.  
© Kawneer Company, Inc., 2014

# bp Glass Garage Doors & Entry Systems, Inc.

## California Line

bp manufactures and installs full-vision aluminum and glass sectional overhead doors. The California line is primarily used for garage areas in all climates. An optional NFRC Certified Air Leakage Resistance Package is available, for an airtight wall opening where building code compliance for energy efficiency, is required.

bp - Glass Garage Doors *Fully Insulated Frame Technology (US and International Patent)* is the key factor for eliminating air leakage when using this type of door to enclose any climate controlled space.

(Per NFRC 400 / ASTM E283)

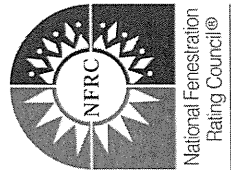
### Air Leakage Resistance Package\*

#### Air Leakage Resistance Results (Per NFRC 400 / ASTM E283)

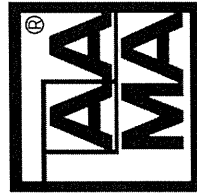
Residential Standard	0.3 CFM
Commercial Standard	0.4 CFM
<b>bp - Glass Garage Doors results</b>	0.06 CFM

\*Note: The lower the CFM = Better Air Leakage Resistance. Thermal ratings for U-factor, SHGC, and VT available upon request, per NFRC 100.

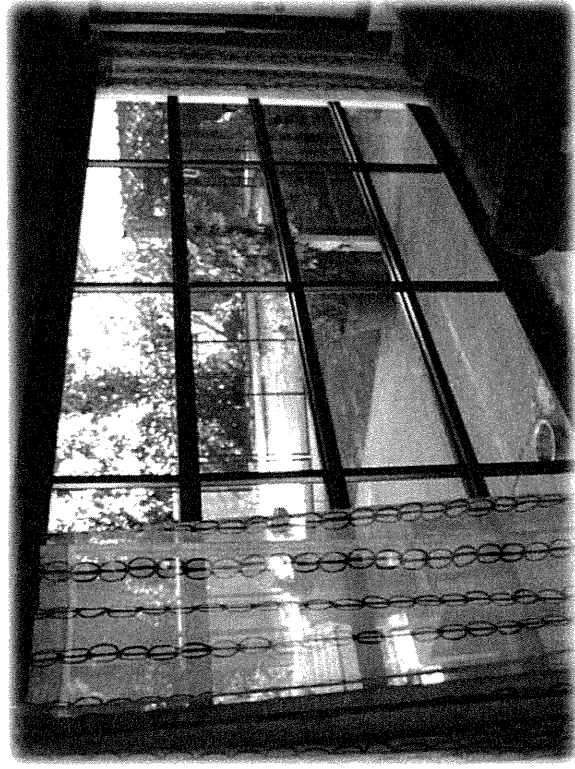
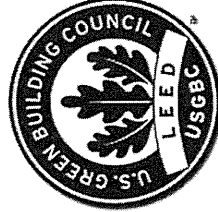
\*Air Infiltration package is available in combination with any type of glazing.

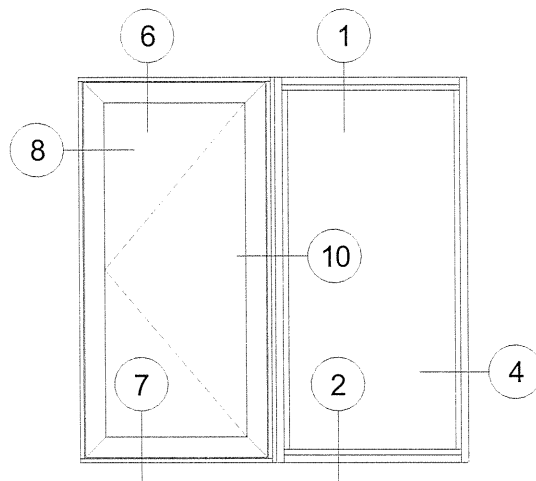
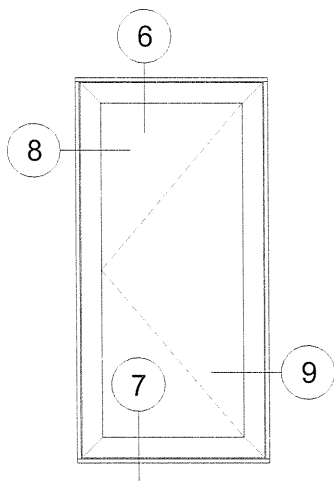
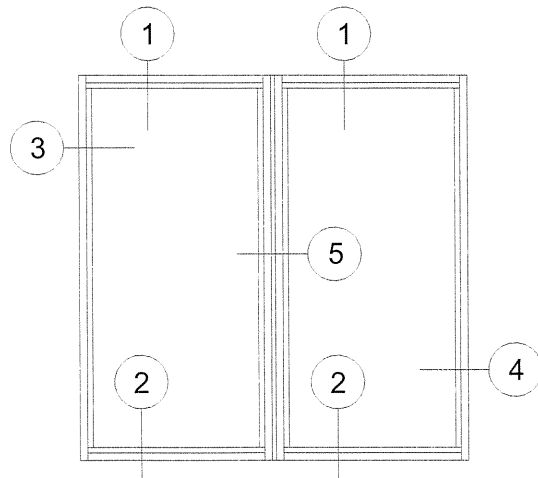
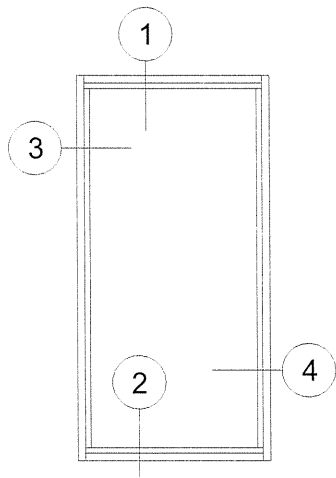


National Fenestration  
Rating Council®



QUALITY ASSURANCE PROGRAM  
ATI-AA676





 **West Window Corporation**  
 Industrial Park P.O. Drawer 3071  
 Martinsville, Virginia (276)638-2394

25th Street Theatre Project

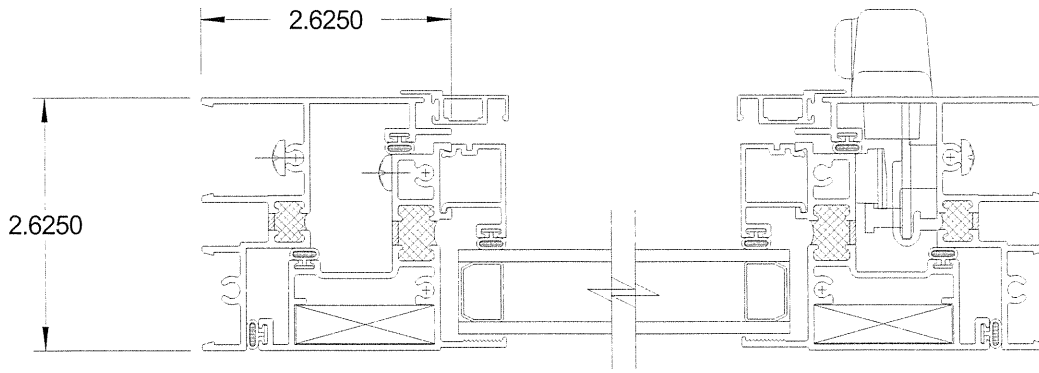
Elevations

9/12/2014

SCALE: 1/2" = 1'

Drawn: DB

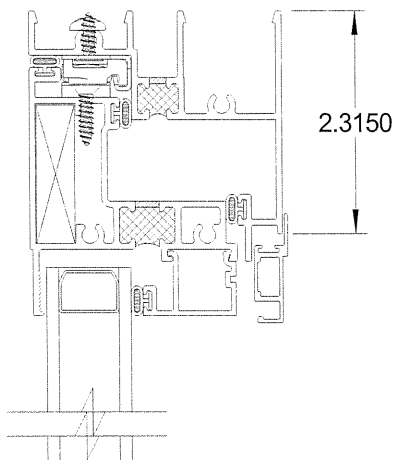




8

9

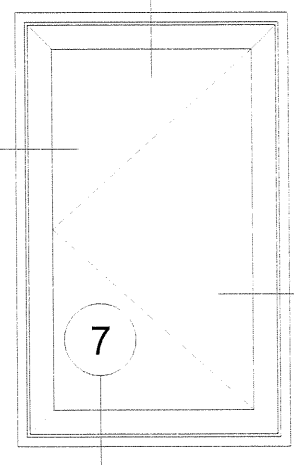
6



8

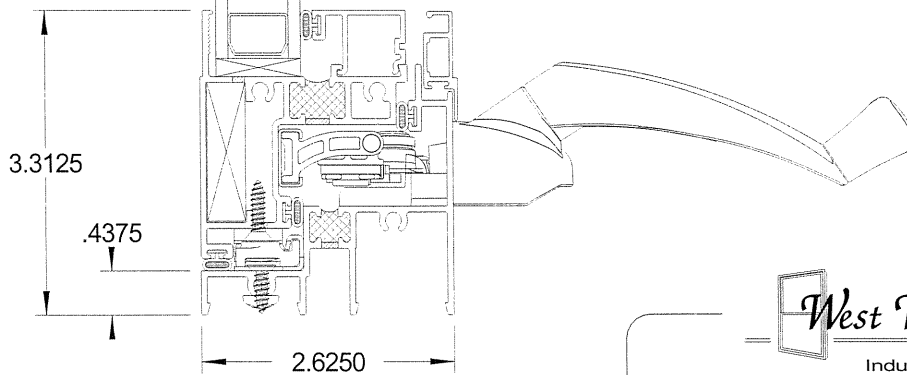
6

9



7

7



*West Window Corporation*

Industrial Park  
Martinsville, Virginia

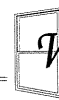
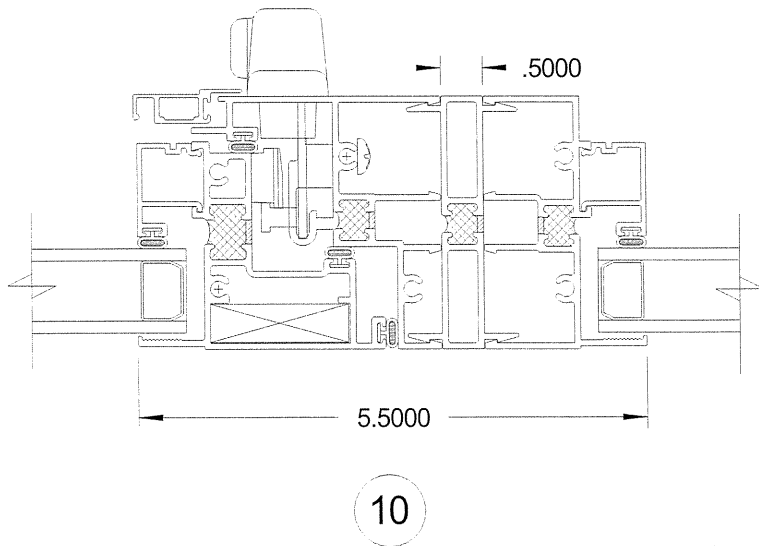
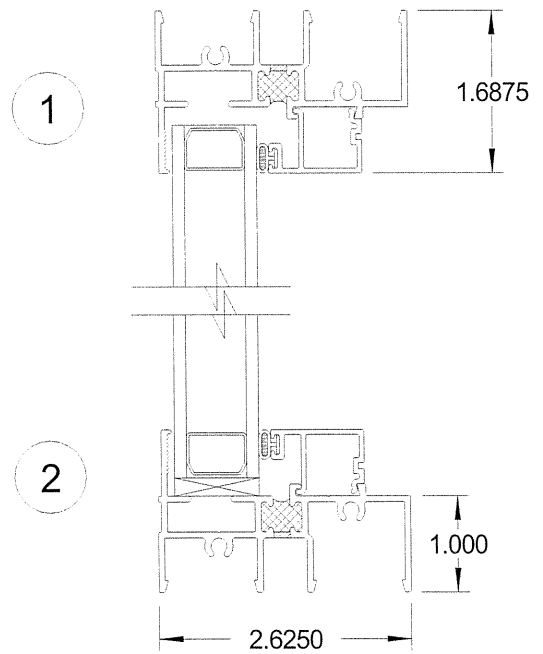
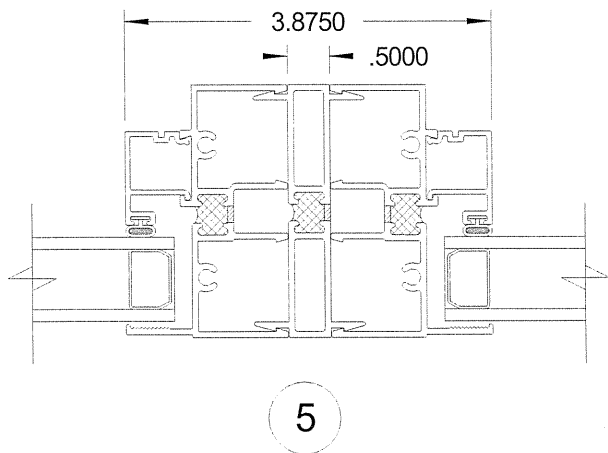
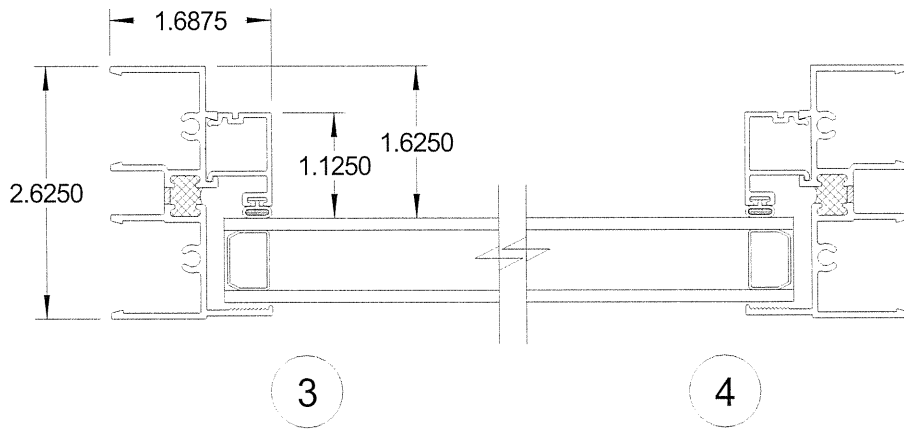
P.O. Drawer 3071  
(276)638-2394

Westco Projection Series Casement

25th Street Theatre Project

9/12/2014

Drawn: DB



*West Window Corporation*

Industrial Park  
Martinsville, Virginia

P.O. Drawer 3071  
(276)638-2394

25th Street Theatre Project

Fixed Unit Frame & Mullion Details

9/12/2014

Drawn: DB

# Westco Thermal Aluminum Casement Test Summary

Structural Test Data						
Tested Size	Performance Grade - DP	Uniform Load	Water Resistance	Air Infiltration	Test Method	Test Report Number
32 x 60	C-C50	+/- 75.0 psf	WTP= 9.75	0.01 cfm/ft <sup>2</sup>	A440-05	CTLA 2029W-1

Thermal Test Data	Configuration	U-Factor	SHGC	Vis Transmit	CRF
Clear	No Grid	0.60	0.53	0.54	41
Clear	With Grid	0.60	0.48	0.49	41
Low-E2-270	No Grid	0.49	0.26	0.46	43
Low-E2-270	With Grid	0.49	0.24	0.41	43
Low-E2-270/Argon	No Grid	0.47	0.26	0.46	43
Low-E2-270/Argon	With Grid	0.47	0.24	0.41	43
Low-E3-366	No Grid	0.49	0.20	0.42	43
Low-E3-366	With Grid	0.49	0.19	0.38	43
Low-E3-366/Argon	No Grid	0.46	0.20	0.42	43
Low-E3-366/Argon	With Grid	0.46	0.18	0.38	43
Low-E-240	No Grid	0.50	0.19	0.26	43
Low-E-240	With Grid	0.50	0.17	0.24	43
Low-E-240/Argon	No Grid	0.47	0.18	0.26	43
Low-E-240/Argon	With Grid	0.47	0.17	0.24	43

### Additional Information

Egress Calculation Example - Standard Hinge					
Window Size	Width Deduction	Height Deduction	Net Clear Opening Width	Net Clear Opening Height	Egress Opening
32 x 60	10.750	5.25	21-1/4"	54-3/4"	8.079 Sq Ft
Egress Calculation Example – Special Egress Hinge					
Window Size	Width Deduction	Height Deduction	Net Clear Opening Width	Net Clear Opening Height	Egress Opening
32 x 60	6.750	5.25	25-1/4"	54-3/4"	9.600 Sq Ft
Daylight Calculation Example					
Window Size	Width Deduction	Height Deduction	Net Clear Light Width	Net Clear Light Height	Day light Opening
32 x 60	6.375	6.375	25-5/8"	53-5/8"	9.543 Sq Ft

Complete test reports are available upon request.



# Westco Thermal Aluminum Fixed-Projection Series Test Summary

Structural Test Data						
Tested Size	Performance Grade - DP	Uniform Load	Water Resistance	Air Infiltration	Test Method	Test Report Number
60 x 60	FW-C50	+/- 75 psf	WTP= 9.75	0.01 cfm/ft <sup>2</sup>	A440-05	CTLA-2029W-2

Westco SH/SLDR Series Fixed PW	Configuration	U-Factor	SHGC	Vis Transmit	CRF
Clear	No Grid	0.53	0.69	0.72	43
Clear	With Grid	0.53	0.62	0.65	43
Low-E2-270	No Grid	0.38	0.33	0.61	49
Low-E2-270	With Grid	0.38	0.30	0.55	49
Low-E2-270/Argon	No Grid	0.34	0.33	0.61	49
Low-E2-270/Argon	With Grid	0.34	0.30	0.55	49
Low-E3-366	No Grid	0.37	0.25	0.57	49
Low-E3-366	With Grid	0.37	0.23	0.51	49
Low-E3-366/Argon	No Grid	0.33	0.25	0.57	49
Low-E3-366/Argon	With Grid	0.33	0.22	0.51	50
Low-E-240	No Grid	0.38	0.23	0.35	49
Low-E-240	With Grid	0.38	0.21	0.31	49
Low-E-240/Argon	No Grid	0.34	0.23	0.35	49
Low-E-240/Argon	With Grid	0.34	0.21	0.31	49

### Additional Information

Daylight Calculation Example:					
Window Size	Width Deduction	Height Deduction	Net Clear Light Width	Net Clear Light Height	Day light Opening
60 x 60	3.3125	3.3125	56-11/16"	56-11/16"	22.316 Sq Ft

Complete test reports are available upon request.

