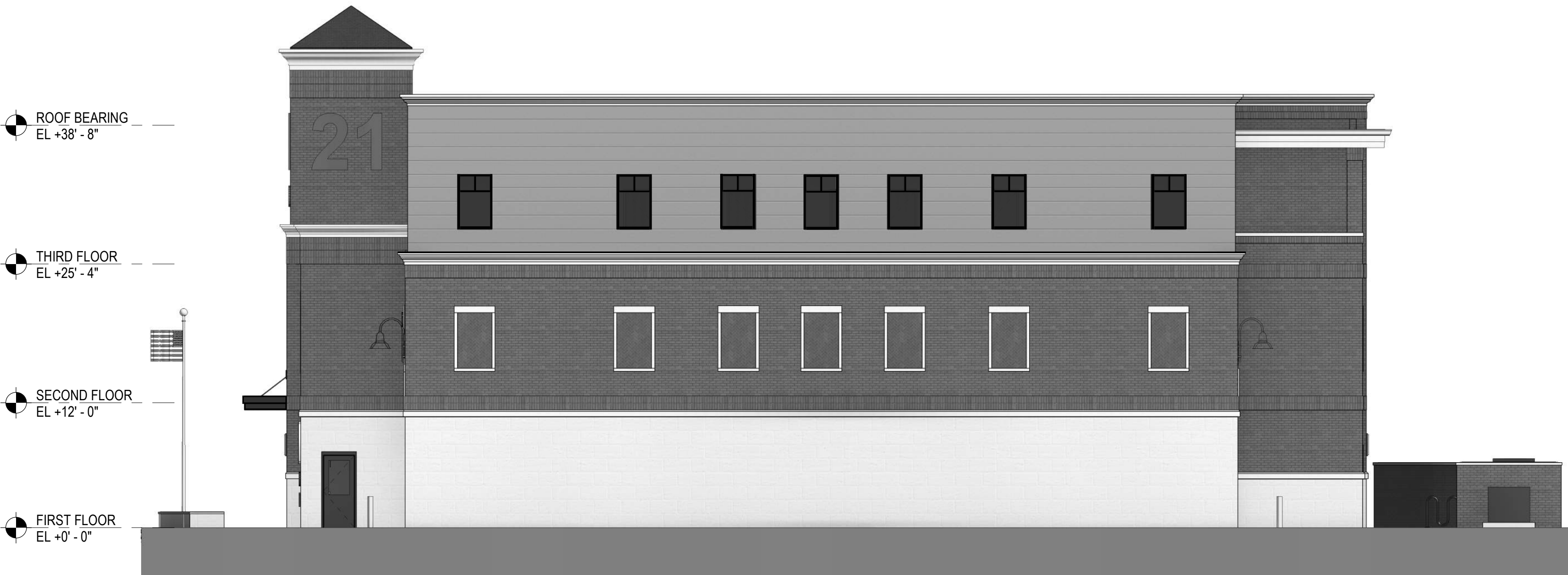


# City of Richmond: New Fire Station #21



Proposed Building Design Concept - Overall 2D Exterior Views



# City of Richmond: New Fire Station #21



EXAMPLE:  
- BRICK  
- LARGE FORMAT CAST STONE  
- CAST STONE WATER TABLE & CORNICE



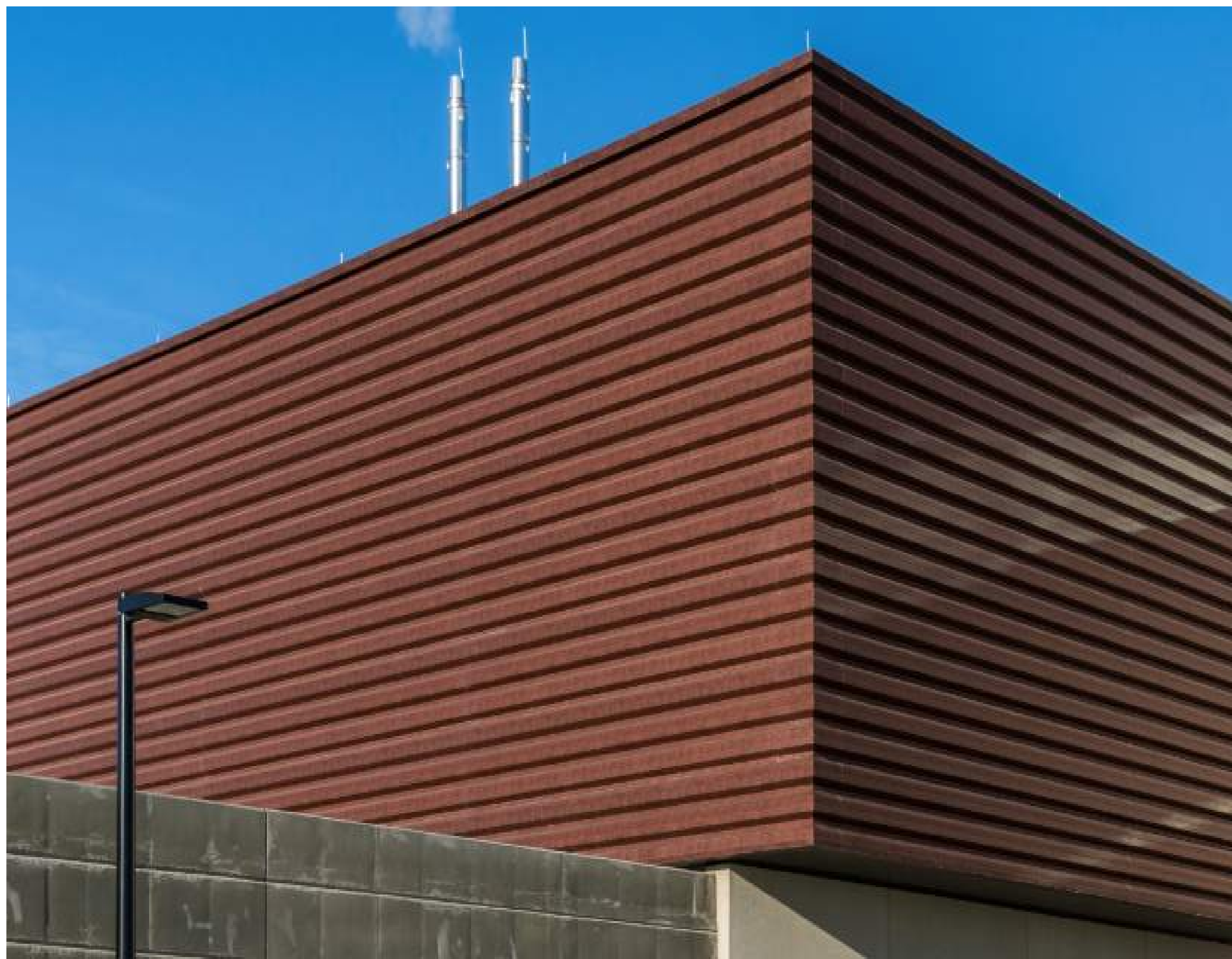
EXAMPLE:  
- LARGE FORMAT CAST STONE  
- PREFINISHED ALUMINUM COMPOSITE PANEL CANOPY SYSTEM



EXAMPLE:  
- BRICK  
- CAST STONE WATER TABLE  
- CAST STONE JAMBS, HEADERS & ARCHES  
- CAST STONE WALL CAPS.



EXAMPLE:  
- BRICK  
- PREFINISHED ALUMINUM CANOPY SYSTEM



EXAMPLE:  
- PREFINISHED ARCHITECTURAL METAL WALL PANEL SYSTEM  
- PREFINISHED ARCHITECTURAL METAL COPING SYSTEM



EXAMPLE:  
- CAST STONE HEADER  
- PREFINISHED APPRATUS BAY DOOR SYSTEM  
- PREFINISHED ALUMINUM DIMENSIONAL BACK-LIT SIGNAGE SYSTEM

## Inspirational Images



# City of Richmond: New Fire Station #21



EXAMPLE:  
- SIMULATED SLATE ROOF SYSTEM

## Inspirational Images



# City of Richmond: New Fire Station #21



- (A) ARCHITECTURAL BRICK VENEER W/ ACCENT SOLDIER COURSING
- (B) ARCHITECTURAL PRECAST CONCRETE BASE SYSTEM
- (C) PREFINISHED ALUMIMUM COMPOSITE MAIN ENTRY CANOPY
- (D) TINTED, HIGH PERFORMANCE INSULATED GLAZING IN THERMALLY BROKEN ALUMINUM STOREFRONT FRAMING
- (E) PREFINISHED ARCHITECTURAL METAL WALL PANEL SYSTEM
- (F) ARCHITECTURAL PRECAST CONCRETE CAP/COPING SYSTEM
- (G) SIMULATED SLATE ROOF SYSTEM - SIMILAR TO EXISTING BUILDING
- (H) DIMENSIONAL BACK-LIT SIGNAGE SYSTEM
- (I) DECORATIVE ARCHITECTURAL LIGHTING

Conceptual Design - Proposed Exterior Building Materials



# City of Richmond: New Fire Station #21



Conceptual Design - Proposed Exterior Building Materials



# City of Richmond: New Fire Station #21



View of Rear of the Building



# City of Richmond: New Fire Station #21



View of Public Parking



General Reference Document ( Design & Rendering Prepared by Others )



*Reference Document - Rendering of Richmond's Recently Design New Fire Station 12 Facility*

[ This rendering represents City's New FS 12 facility, that was recently designed and rendered by others. This reference renderings is included in this submission package for the purposes of illustrating the Owner's preference for proposing a similar exterior color and material types for the proposed New FS 21 facility as well )

Reference Image - Color Rendering of Richmond's Recently Designed Fire Station 12 Facility

Reference Document for New Fire Station 21 ( Illustrates Owner's Preference for proposing similar exterior color and material types for New FS21 )