



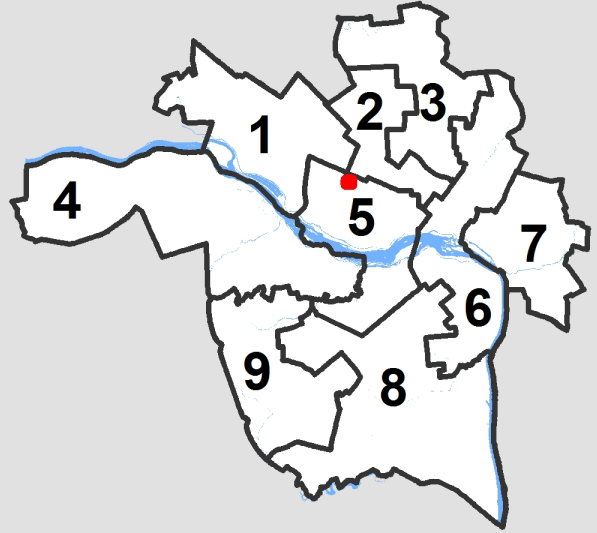
City of Richmond Department of Planning & Development Review

Encroachment

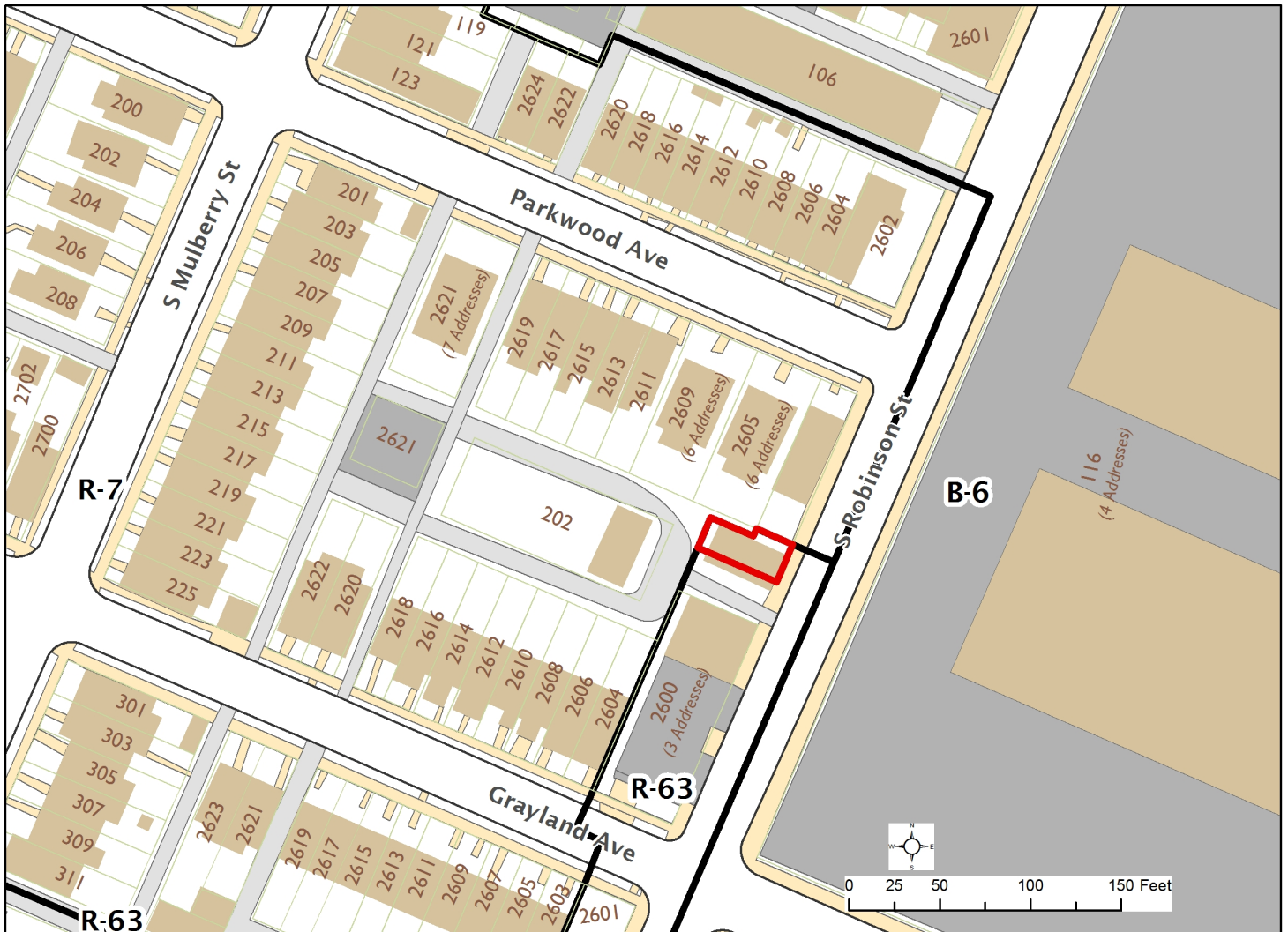
LOCATION: 202 S Robinson Street

COUNCIL DISTRICT: 5

PROPOSAL: Awning and signage encroachment



For questions, please contact Kathleen Onufer
at 646-5207 or Kathleen.Onufer@richmondgov.com



From: [Patrick Farley](#)
To: [Onufer, Kathleen M. - PDR](#)
Subject: RE: App #4578-2016_202 S Robinson St
Date: Monday, August 29, 2016 4:48:30 PM

Kathleen –

I am sorry for the delay on this, I have been operating as best I can from the home front, but we did not get our services back until Friday evening.

My narrative is short and sweet (I had already conveyed most of it previously):

This awning comprises a simple, minimalist form of painted steel - - to match the cladding of fenestrations and otherwise be harmonious with other materials, such as the wood storefront components) - - and is intended to accomplish the following:

- *Self-bracing to resist wind loading (especially uplift) - - the vertical end plate is the primary aspect of this structural necessity;*
- *Protect the storefront and entry from weather, especially in service as bris soleil*
- *Provide an integrated sign-mount that facilitates visibility from both directions - - the vertical end plate serves this purpose, being perpendicular to the façade;*
- *The overarching design goal was for a relatively inconspicuous architectural element (i.e. one that does not call attention to itself, but is complimentary to the existing façade)*
- *Provide for subtle downcast (dark skies) lighting, which is integral to the structure, which is no more than 3" thick.*

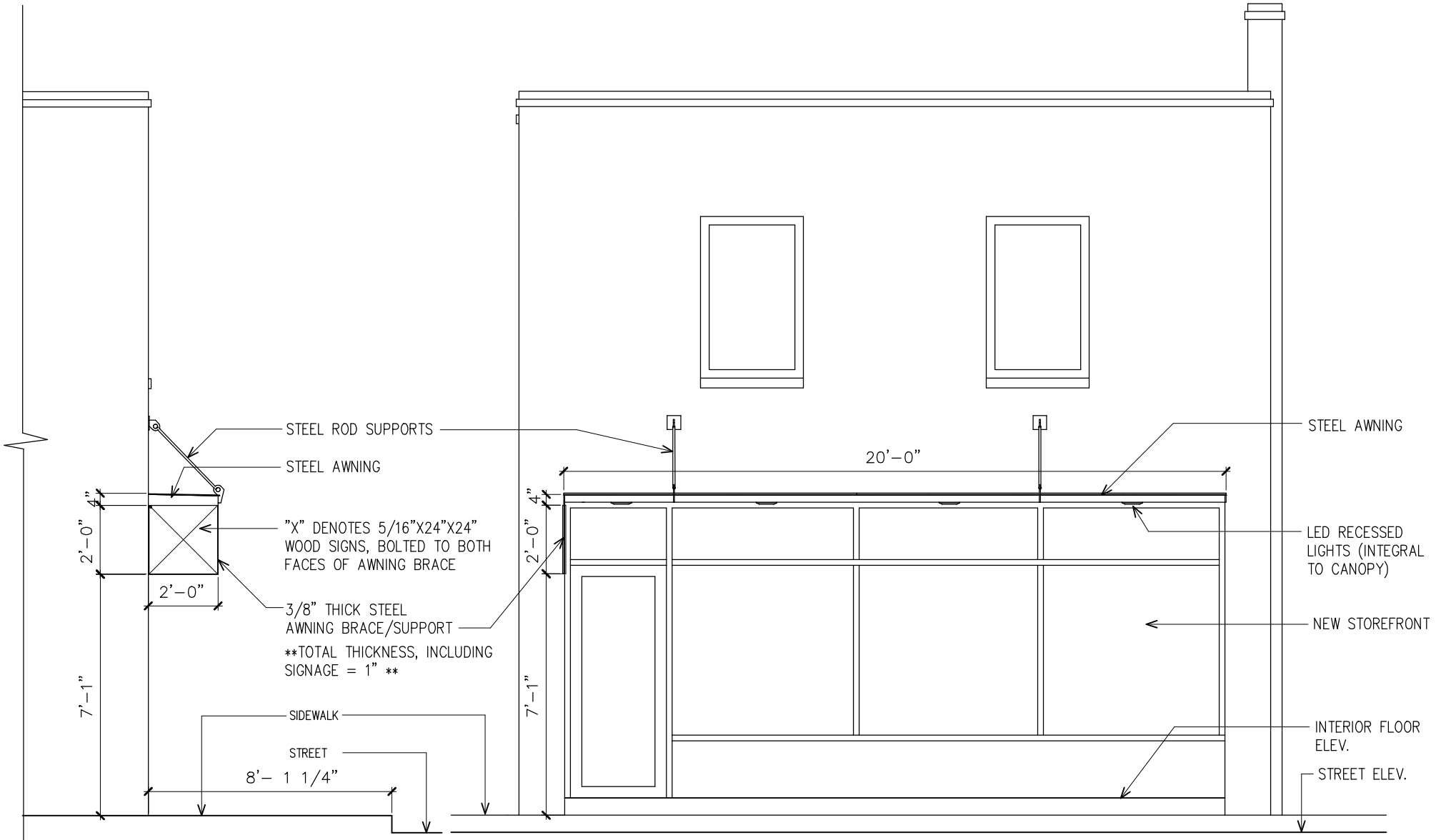
I hope this works!

Thanks,
Patrick

Patrick Farley | AIA/LEED BD+C

P.O. Box 7312 Richmond, Va. 23221 | p.804.404.2516 | www.watershedarch.net





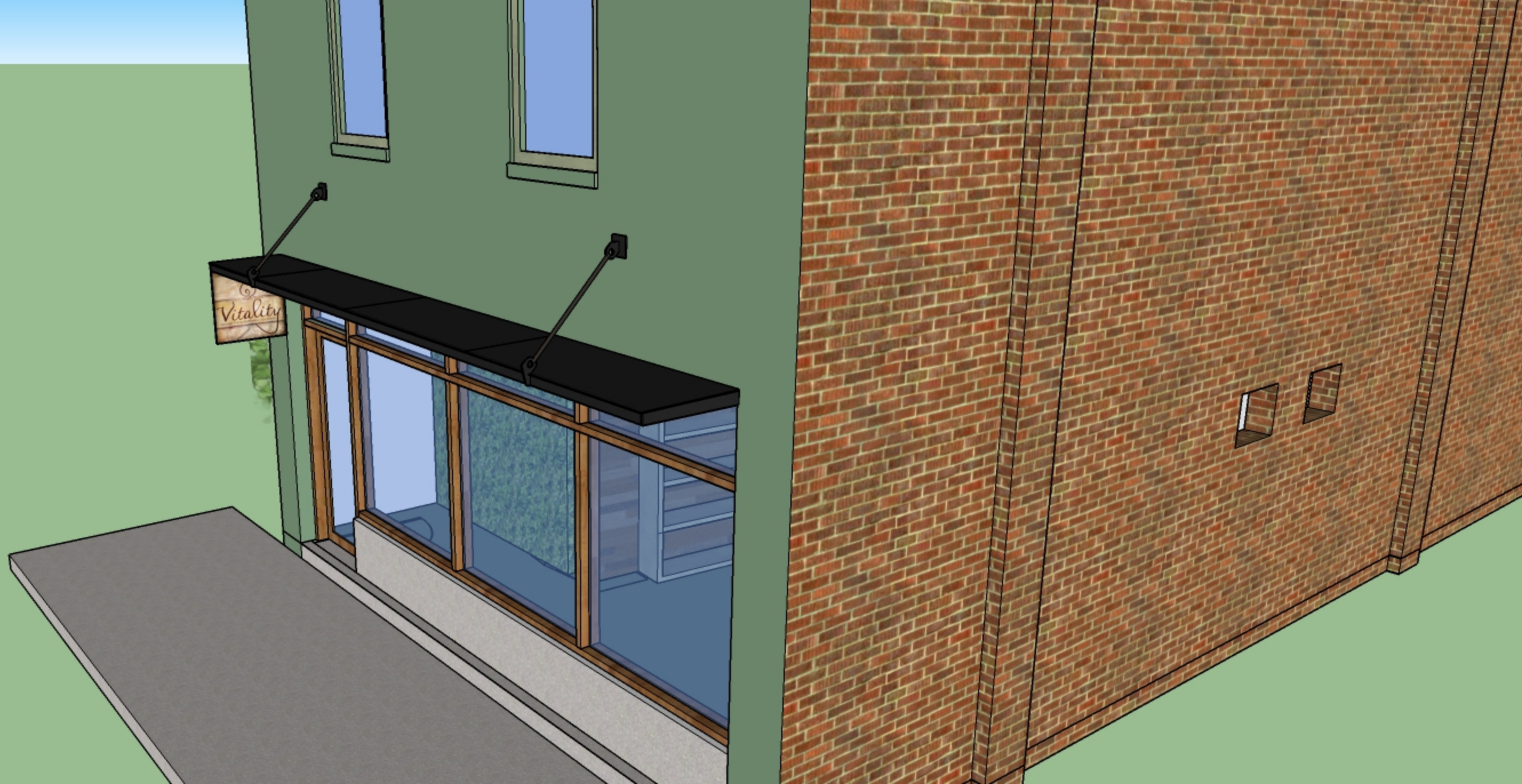
PARTIAL SOUTH ELEVATION

SC: 1/4" = 1'-0"

EAST ELEVATION

SC: 1/4" = 1'-0"

VITALITY FLOAT SPA – – SUPPORTING DOCUMENTATION FOR ENCROACHMENT & SIGN PERMIT APPLICATIONS





Vitality

