

THIS IS TO CERTIFY THAT THIS PLAT OR MAP WAS PREPARED UNDER MY DIRECTION FROM AN ACTUAL FIELD SURVEY WITH THE BENEFIT OF A TITLE REPORT BY BRIDGETRUST TITLE GROUP, FILE No.: 093109731, ISSUE DATE: JULY 17, 2019, AND IS SUBJECT TO INFORMATION DISCLOSED BY SUCH, UNLESS OTHERWISE NOTED, TO THE BEST OF MY KNOWLEDGE AND BELIEF ALL VISIBLE EVIDENCE OF IMPROVEMENTS, EASEMENTS AND APPARENT ENCROACHMENTS ARE SHOWN HEREON. NOT ALL EASEMENTS MAY BE SHOWN. NOT ALL SUBSURFACE IMPROVEMENTS MAY BE SHOWN.

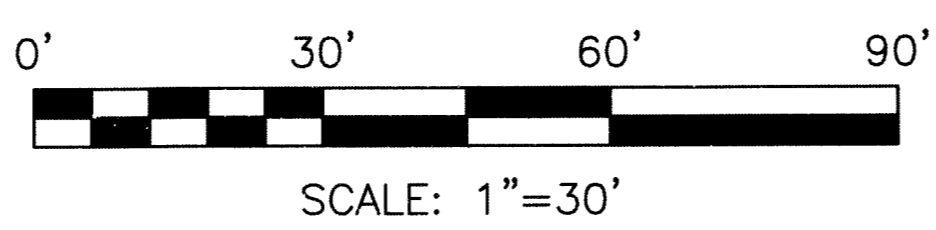
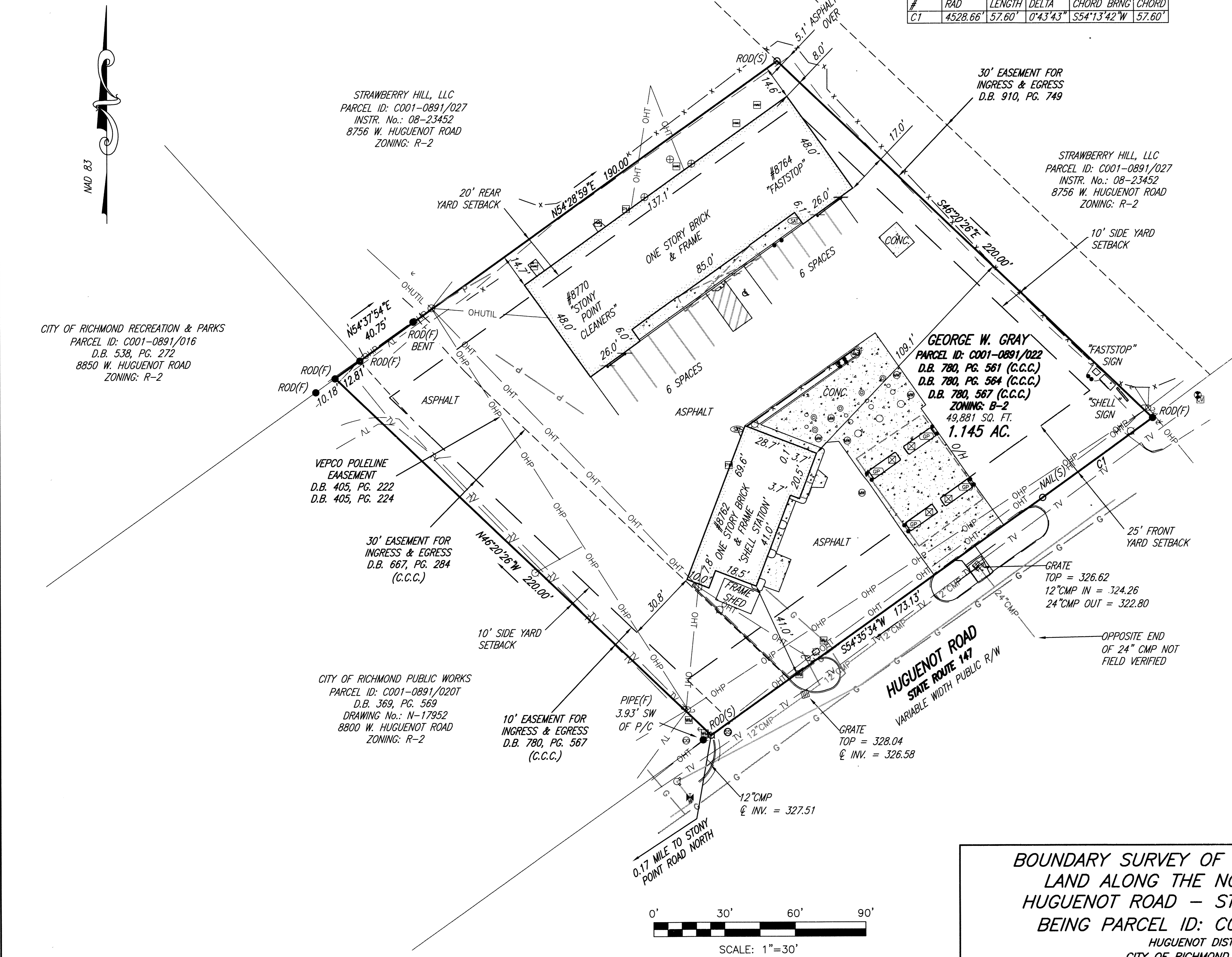
SUBSURFACE UTILITY LOCATION PER MISS UTILITY TICKET No.: A914901617-00A.

CURVE TABLE					
#	RAD	LENGTH	DELTA	CHORD BRNG	CHORD
C1	4528.66'	57.60'	0°43'43"	S54°13'42"W	57.60'

SYMBOL LEGEND	
●	BOLLARD
⊙	CLEANOUT
⊠	COLUMN
⊞	COMMUNICATIONS VAULT
⊕	FIRE HYDRANT
⊗	FIBER OPTIC POST
○	FLEX VALVE
○	FUEL MANHOLE 1.6 FT.
○	FUEL MANHOLE 3 FT.
⊕	GAS FILLER
⊞	GAS PUMP
⊖	GUY WIRE
♿	HANDICAP PARKING
⊞	HVAC
○	LIGHT POLE
⊞	MAIL BOX
⊞	METERED WELL
⊞	POWER METER
⊞	SATELLITE DISH
⊞	SIGN POST
*	SPRINKLER CONTROL OR HEAD
⊞	STORM INLET (GRATE)
⊞	UTILITY POLE
⊞	VACUUM
⊞	VAPOR RECOVERY
⊞	VENT PIPES
⊞	WATER VALVE
⊞	WATER METER

TEXT LEGEND	
(SQ.FT.)	SQUARE FEET
(CONC.)	CONCRETE
(BLDG.)	BUILDING
(R/W)	RIGHT OF WAY
(℄)	CENTERLINE
(P.B.)	PLAT BOOK
(D.B.)	DEED BOOK
(PG.)	PAGE
(O/H)	OVERHANG
(U/G)	UNDERGROUND
(E/P)	EDGE OF PAVEMENT
(RCP)	REINFORCED CONCRETE PIPE

LINETYPE LEGEND	
— OHUTIL —	OVERHEAD UTILITIES
— 12" CMP —	STORM SEWER RCP (U/G)
— OHP —	OVERHEAD POWER
— OHT —	OVERHEAD TELEPHONE
— x — x —	FENCE
— (V) —	WATERLINE (U/G)
— TV —	CABLE (U/G)
— P —	POWER LINE (U/G)
— G —	GAS LINE (U/G)



**BOUNDARY SURVEY OF 1.145 ACRES OF
LAND ALONG THE NORTH LINE OF
HUGUENOT ROAD – STATE ROUTE 147
BEING PARCEL ID: C001-0891/022**

HUGUENOT DISTRICT
CITY OF RICHMOND, VIRGINIA
PLANNERS / ARCHITECTS / ENGINEERS / SURVEYORS
ROANOKE / RICHMOND / NEW RIVER VALLEY / STAUNTON / HARRISONBURG / LYNCHBURG
15871 City View Drive, Suite 200 / Midlothian, Virginia 23113 / Phone (804) 794-0571 / www.balzer.cc

REV: 07-23-2019
DATE: 06-05-2019
SCALE: 1" = 30'
JOB: 55190027.00
DRAWN BY: BCH
CHECKED BY: CMF

