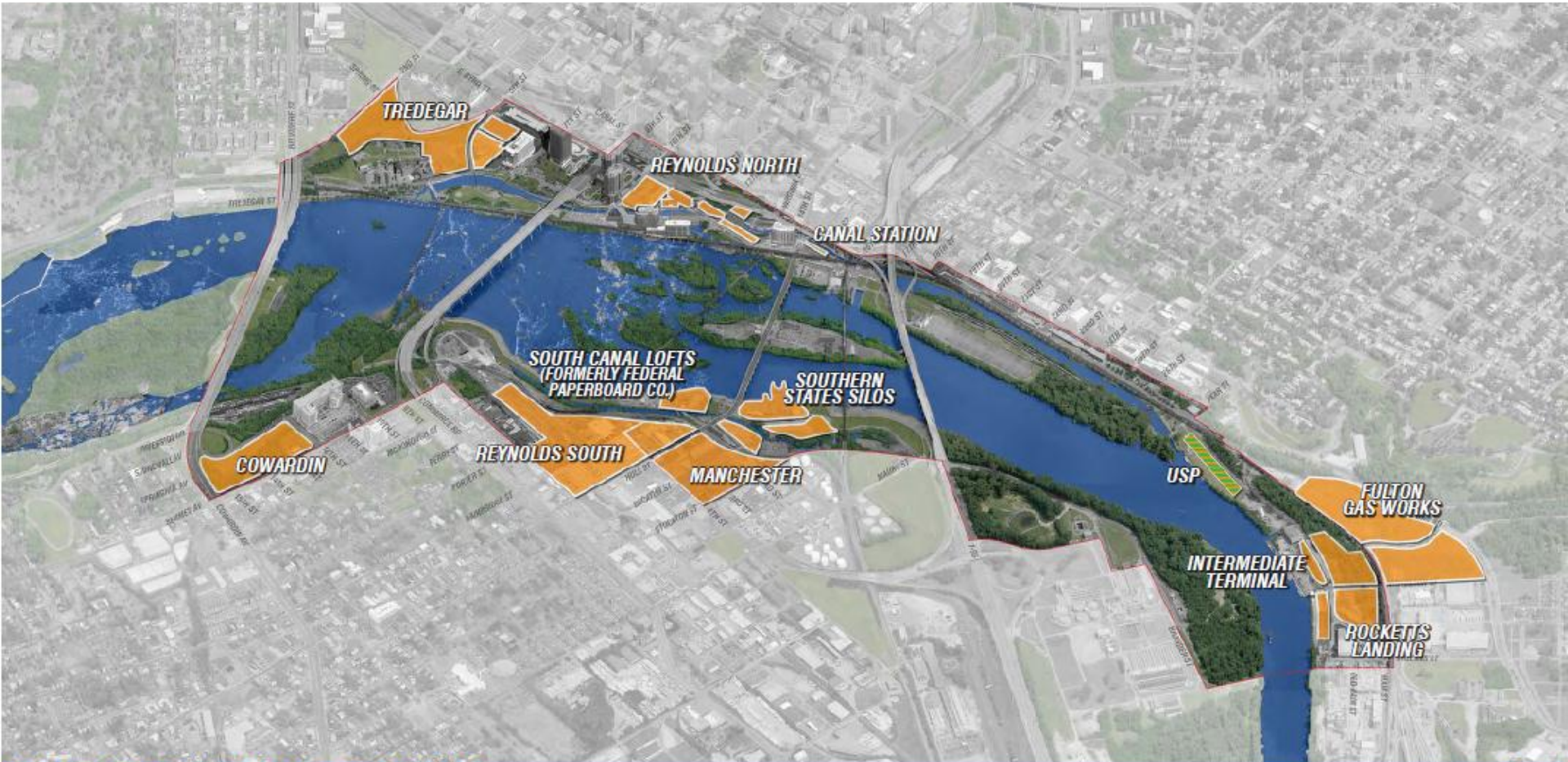


A scenic view of a river with rapids and a bird on a rock. The river flows from the background towards the foreground, where it forms a small waterfall or rapid. The water is clear and reflects the surrounding greenery. A bird is perched on a rock in the middle ground. The background is filled with lush green trees and vegetation.

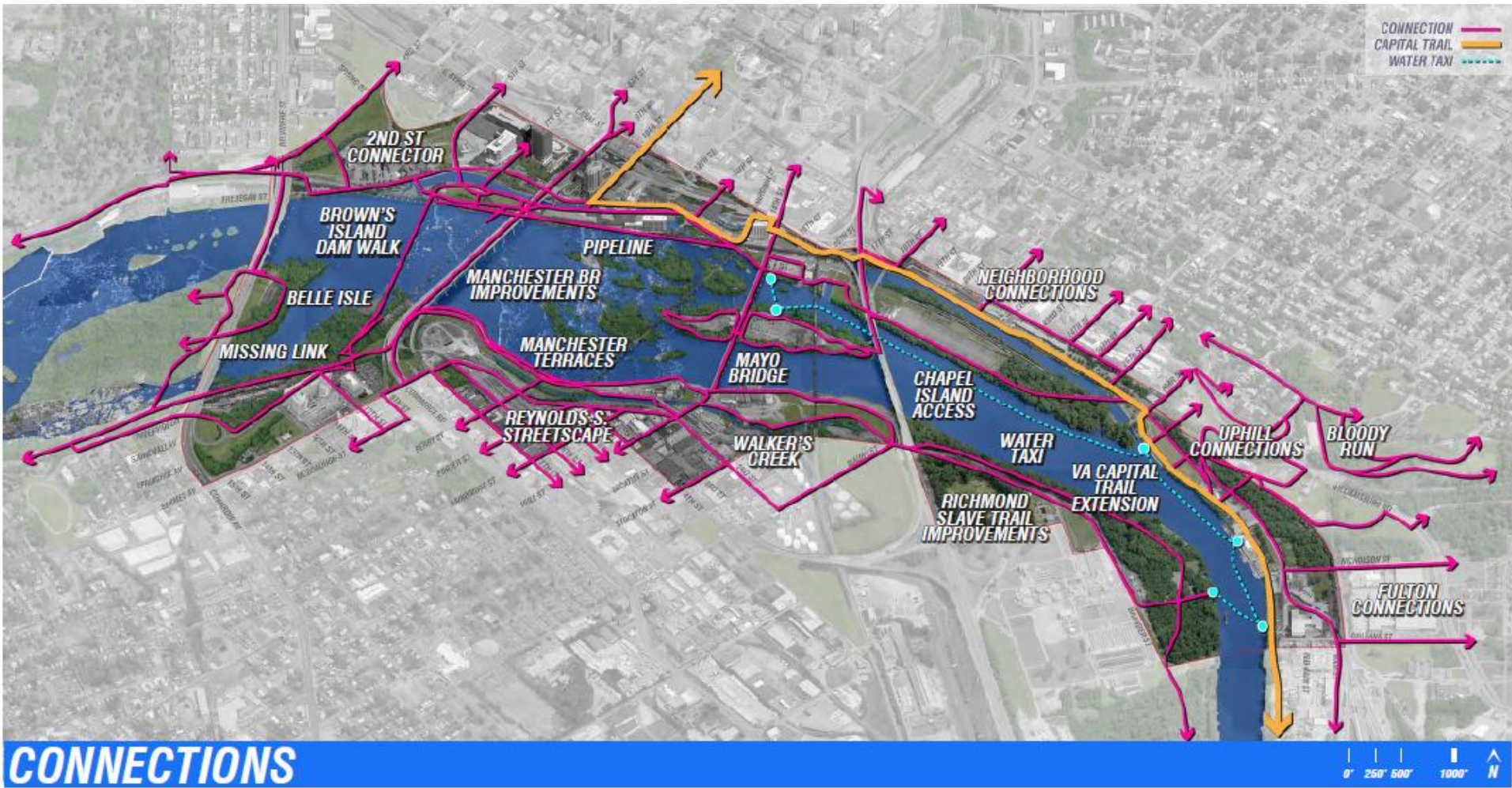
RICHMOND RIVERFRONT PLAN
RE-ESTABLISHING THE CITY-RIVER RELATIONSHIP

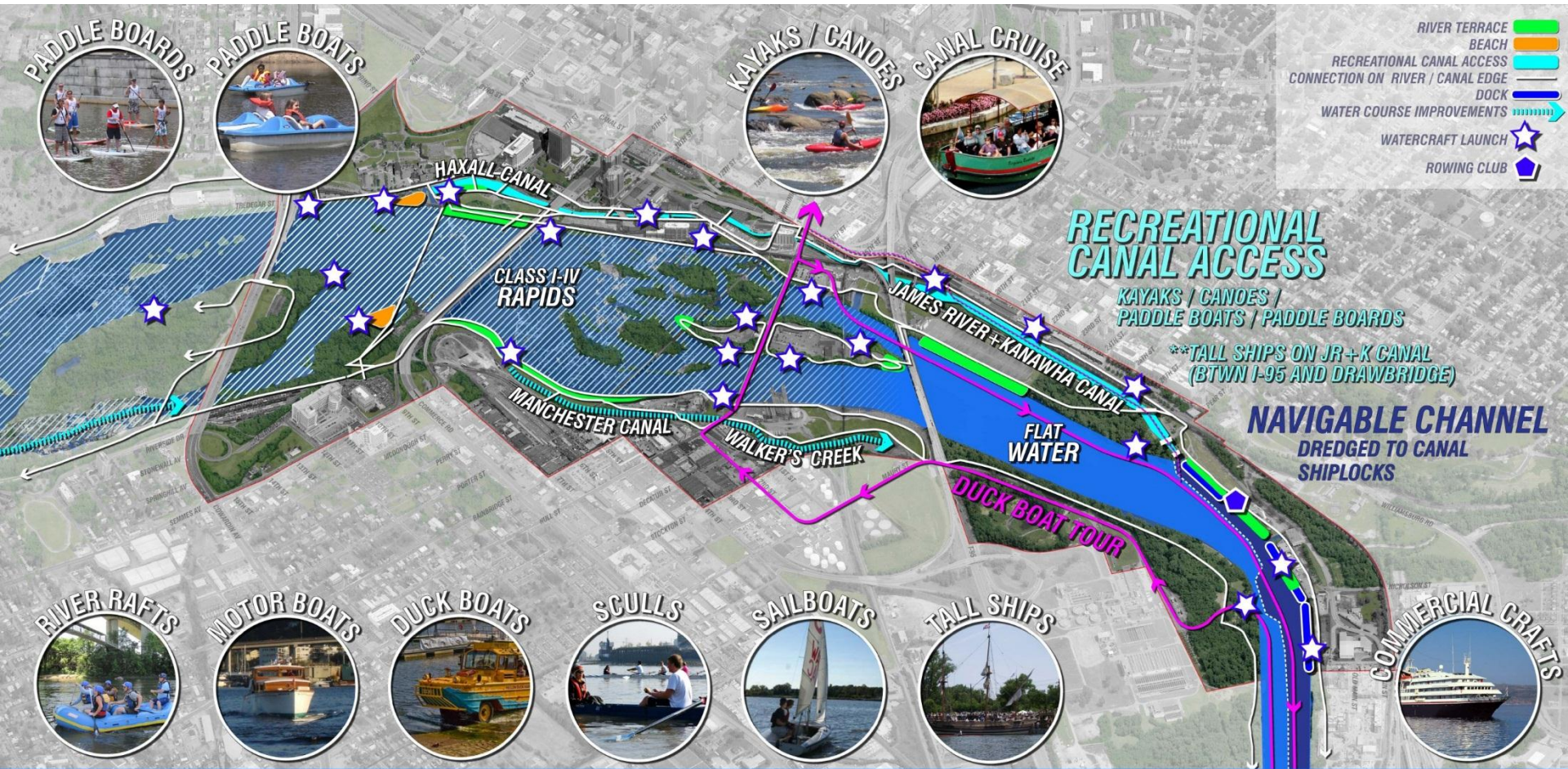
CITY OF RICHMOND
DEPARTMENT OF PLANNING & DEVELOPMENT REVIEW
PLANNING COMMISSION, MARCH 20, 2017



FUTURE DEVELOPMENT

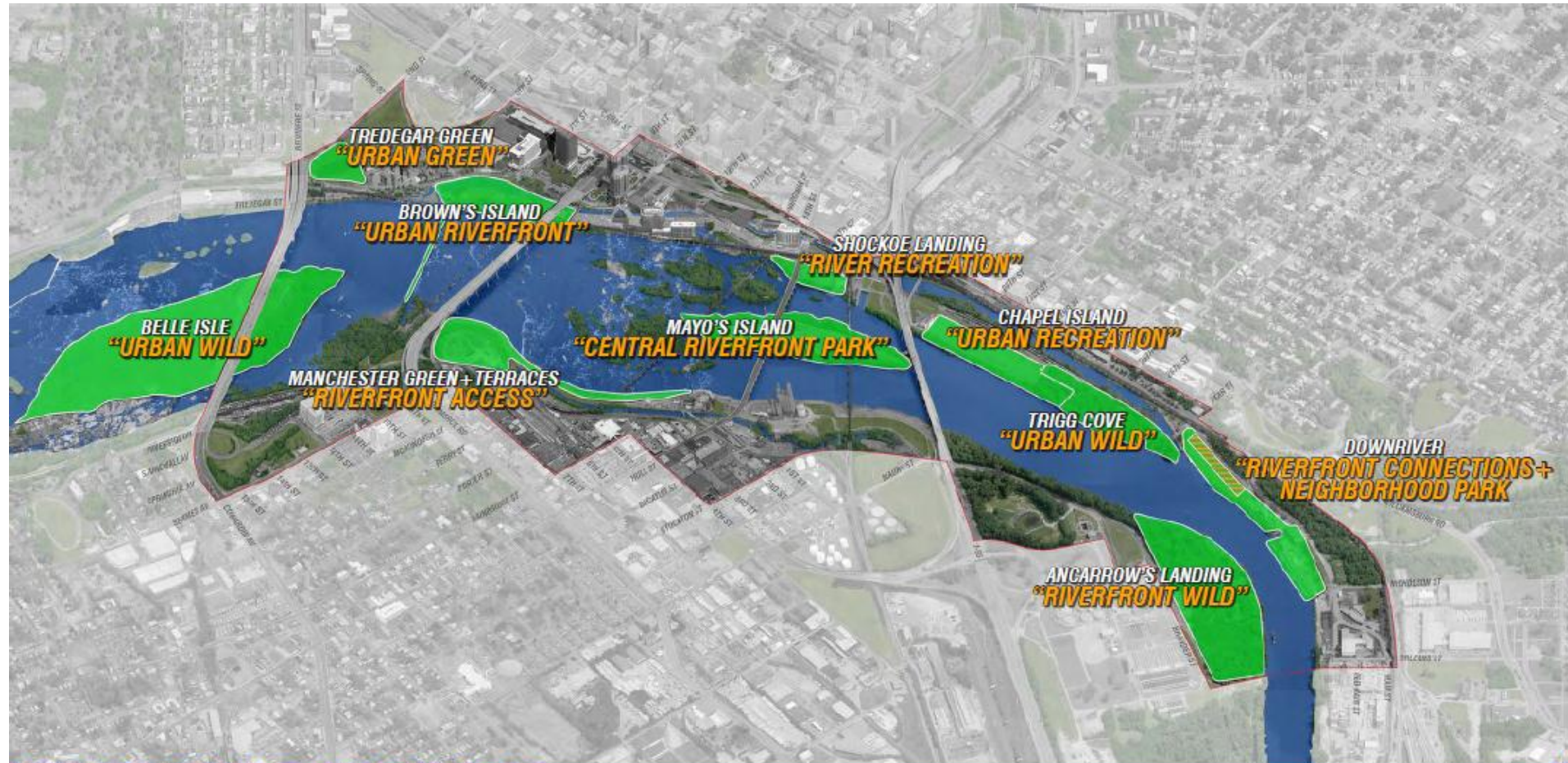






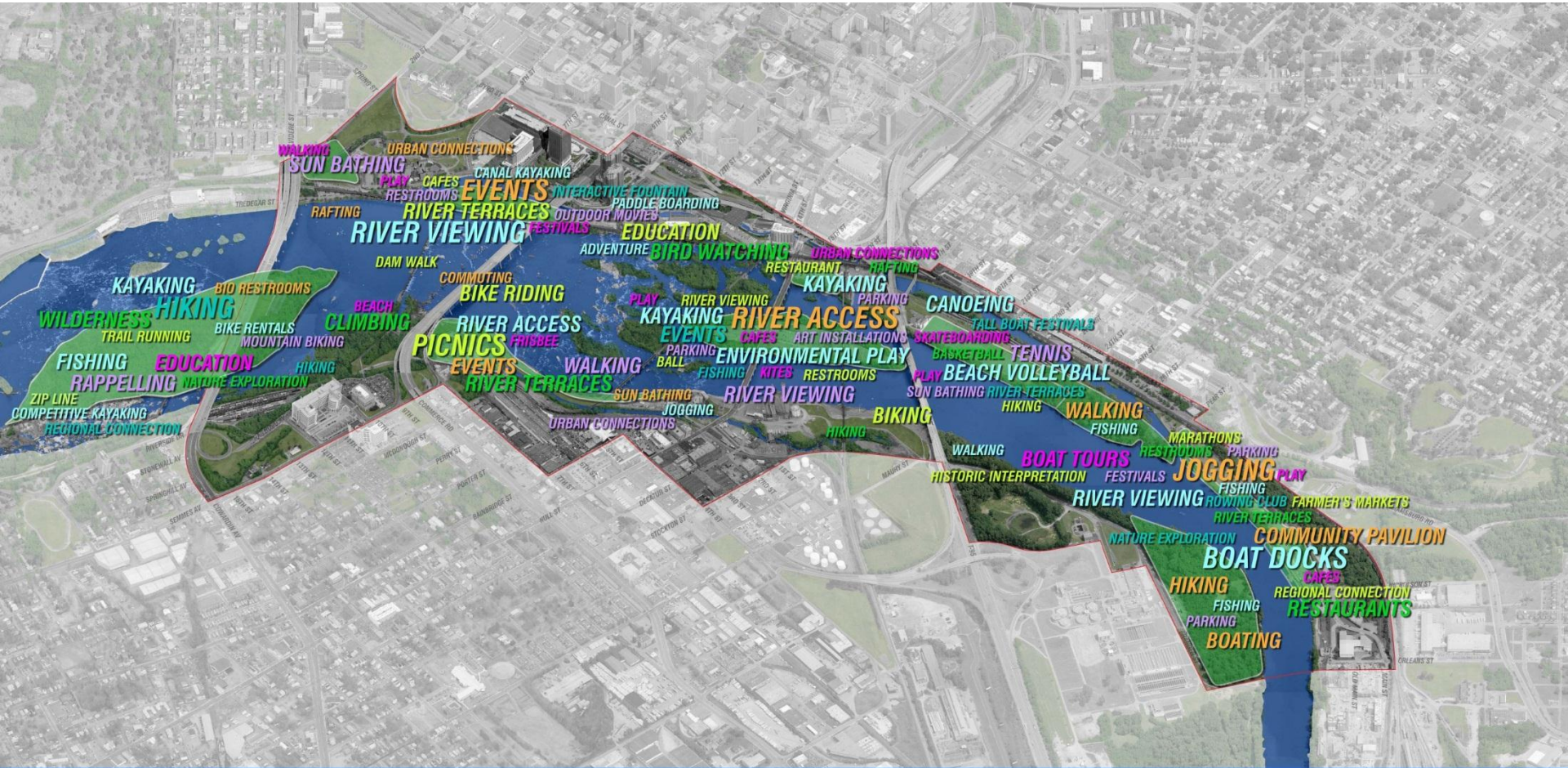
WATER ACCESS





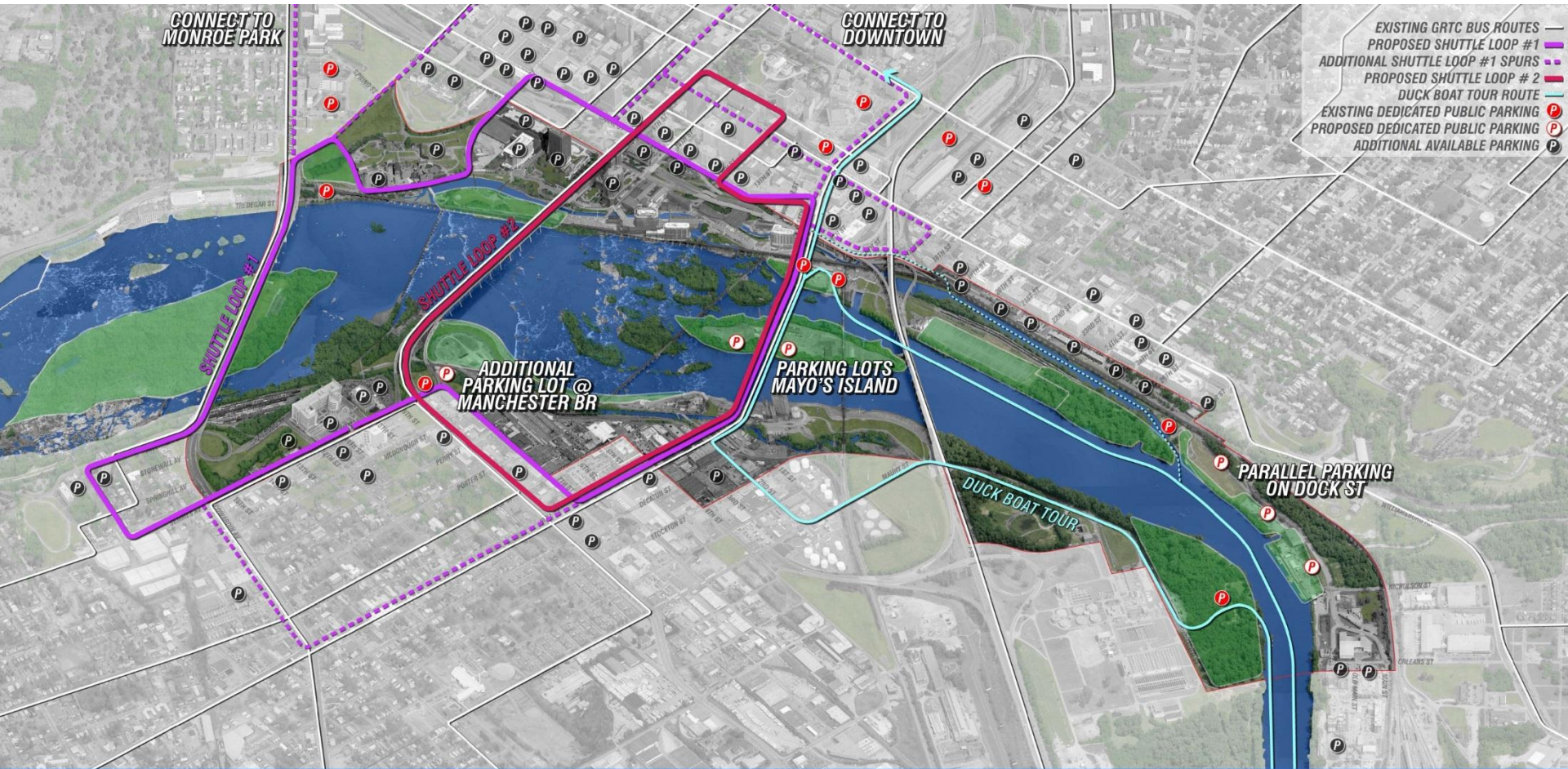
RIVERFRONT CHARACTER



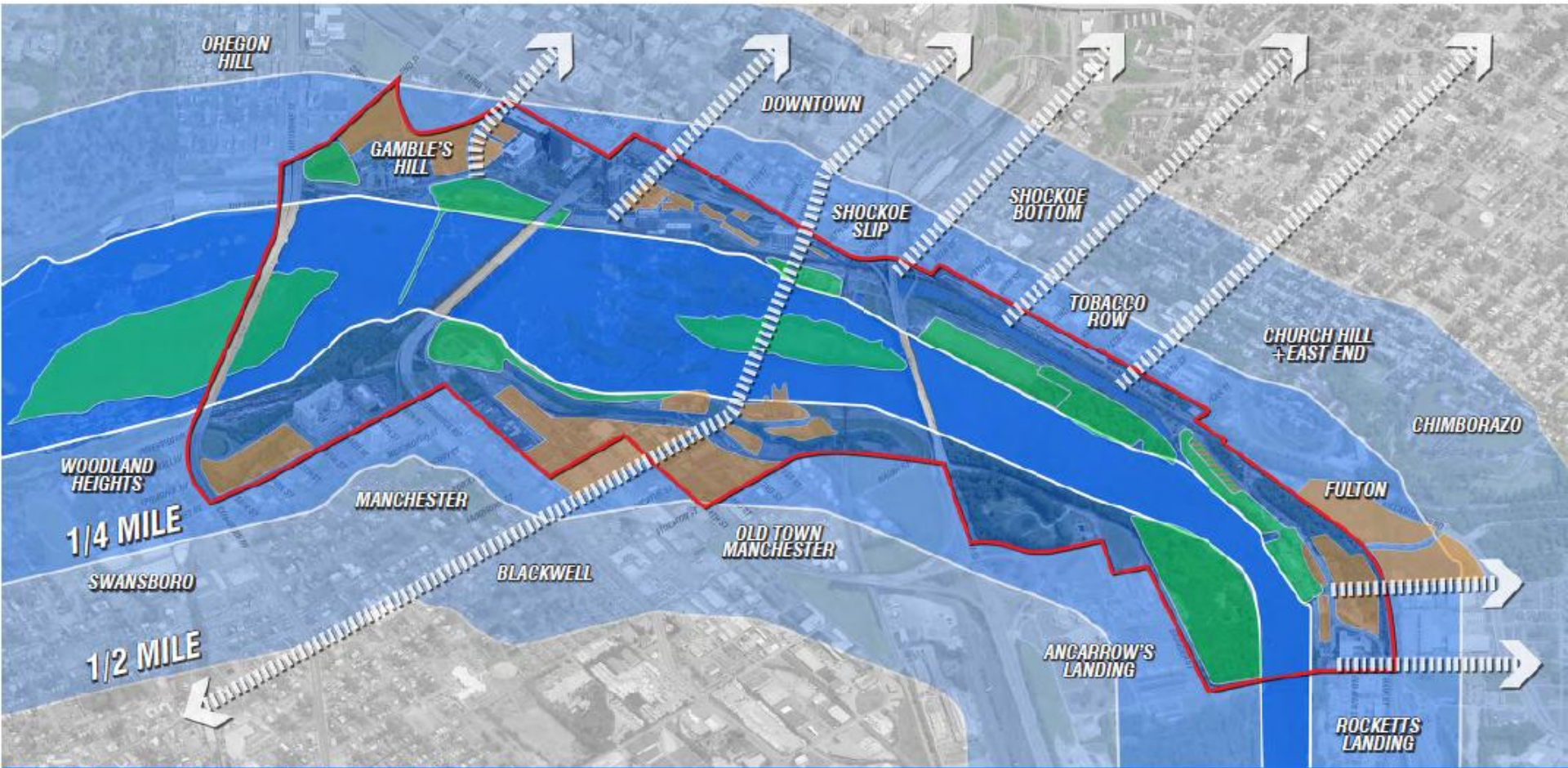


PROGRAM



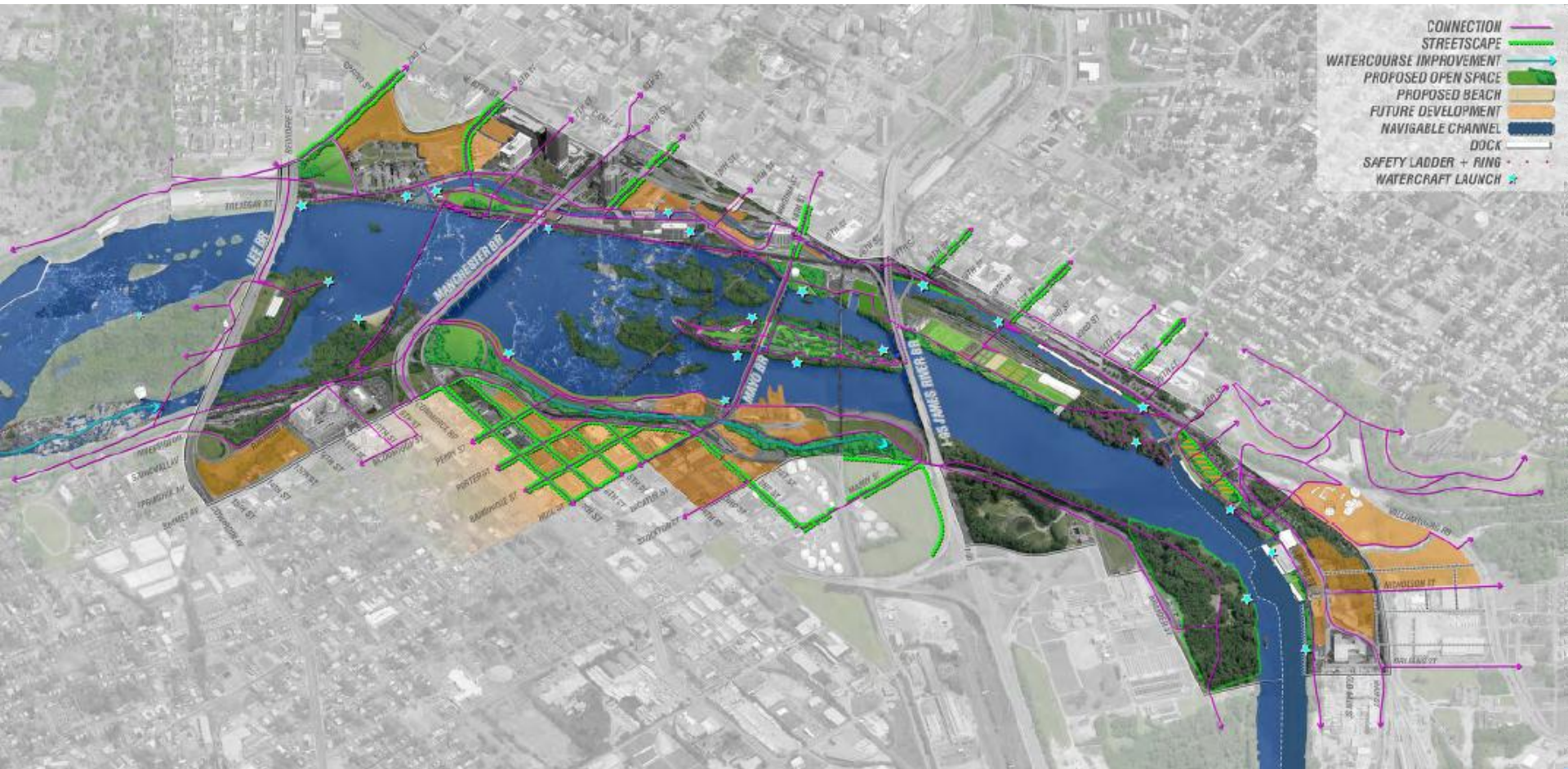


PUBLIC TRANSPORTATION + PARKING



REVERBERATIVE IMPACT





RICHMOND RIVERFRONT PLAN



A SINGLE, UNIFIED, COHESIVE SYSTEM

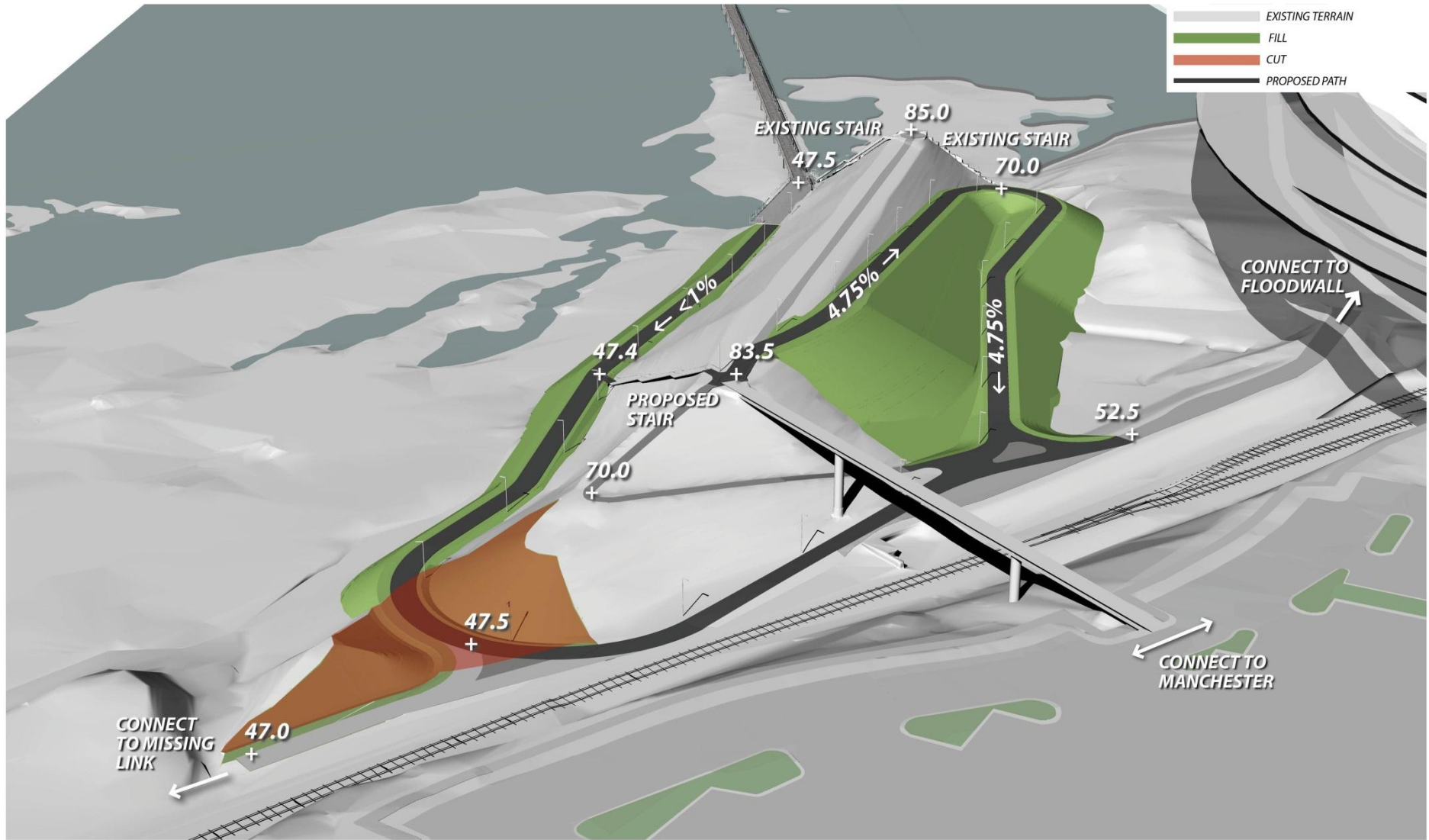


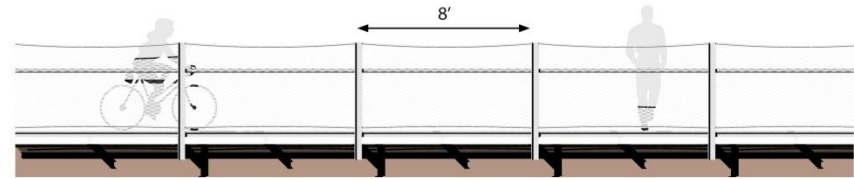
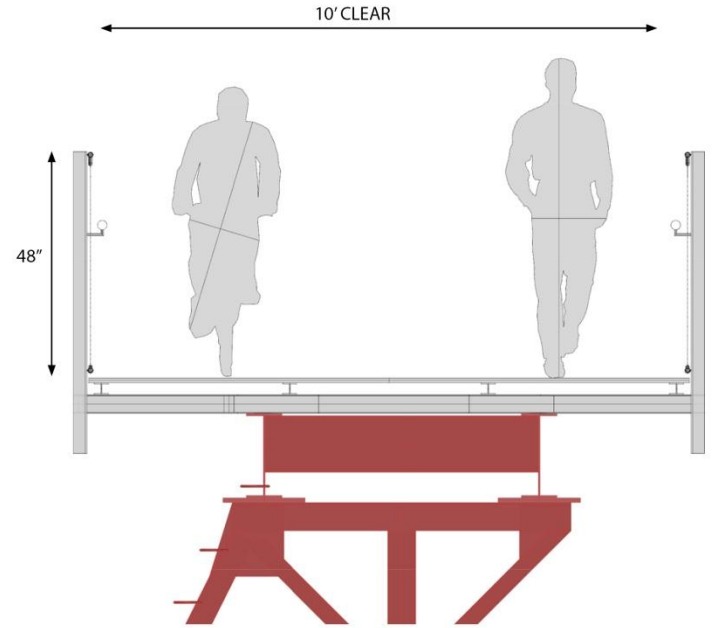
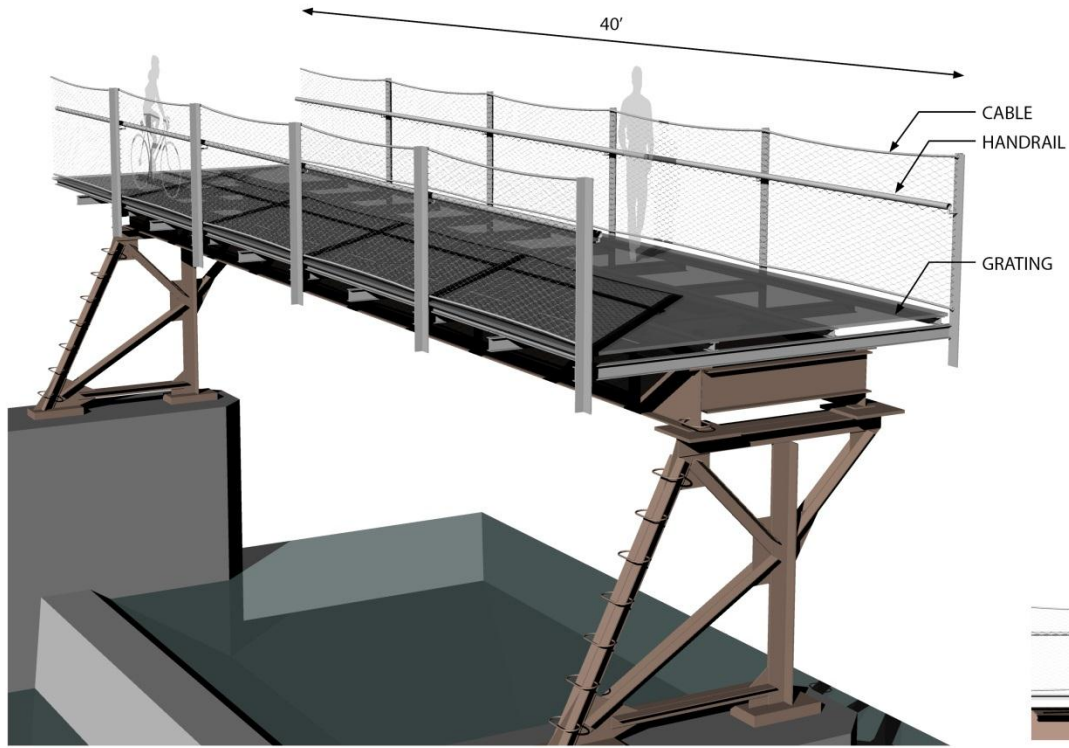
CITY OF RICHMOND VIRGINIA

RICHMOND RIVERFRONT PLAN

T. TYLER POTTERFIELD MEMORIAL BRIDGE









CITY OF RICHMOND VIRGINIA

RICHMOND RIVERFRONT PLAN

T. TYLER POTTERFIELD MEMORIAL BRIDGE



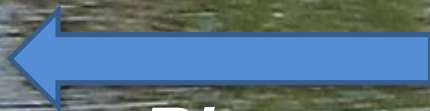
CITY OF RICHMOND VIRGINIA

RICHMOND RIVERFRONT PLAN

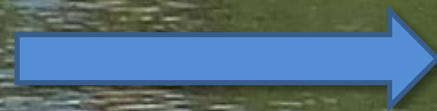
T. TYLER POTTERFIELD MEMORIAL BRIDGE



Photo credit: Natalie Rogers



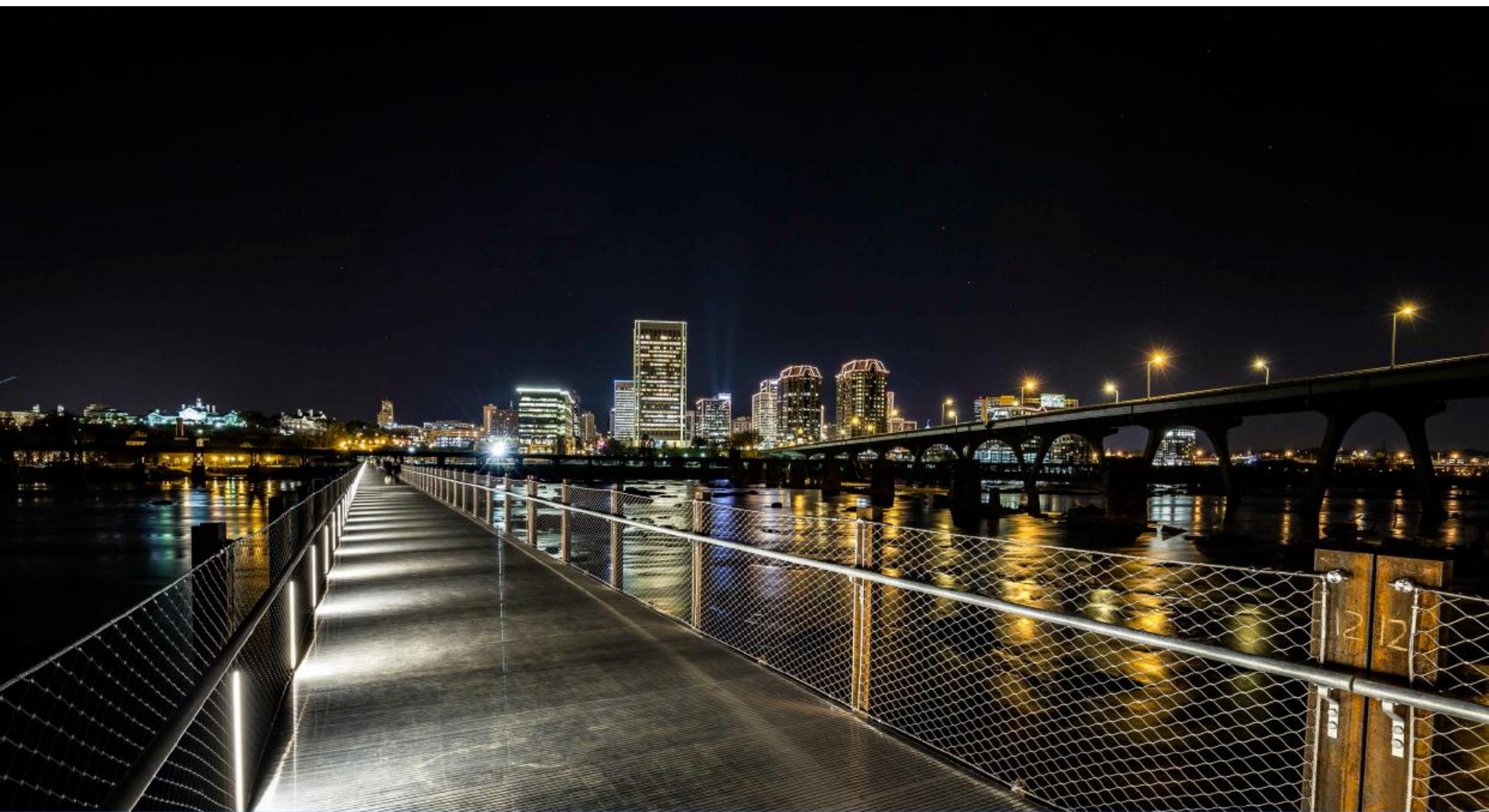
River



People



Photo: J. Betts



RICHMOND RIVERFRONT PLAN

AMENDMENT 1: DOWNRIVER UPDATE 2017 26 NOVEMBER 2012



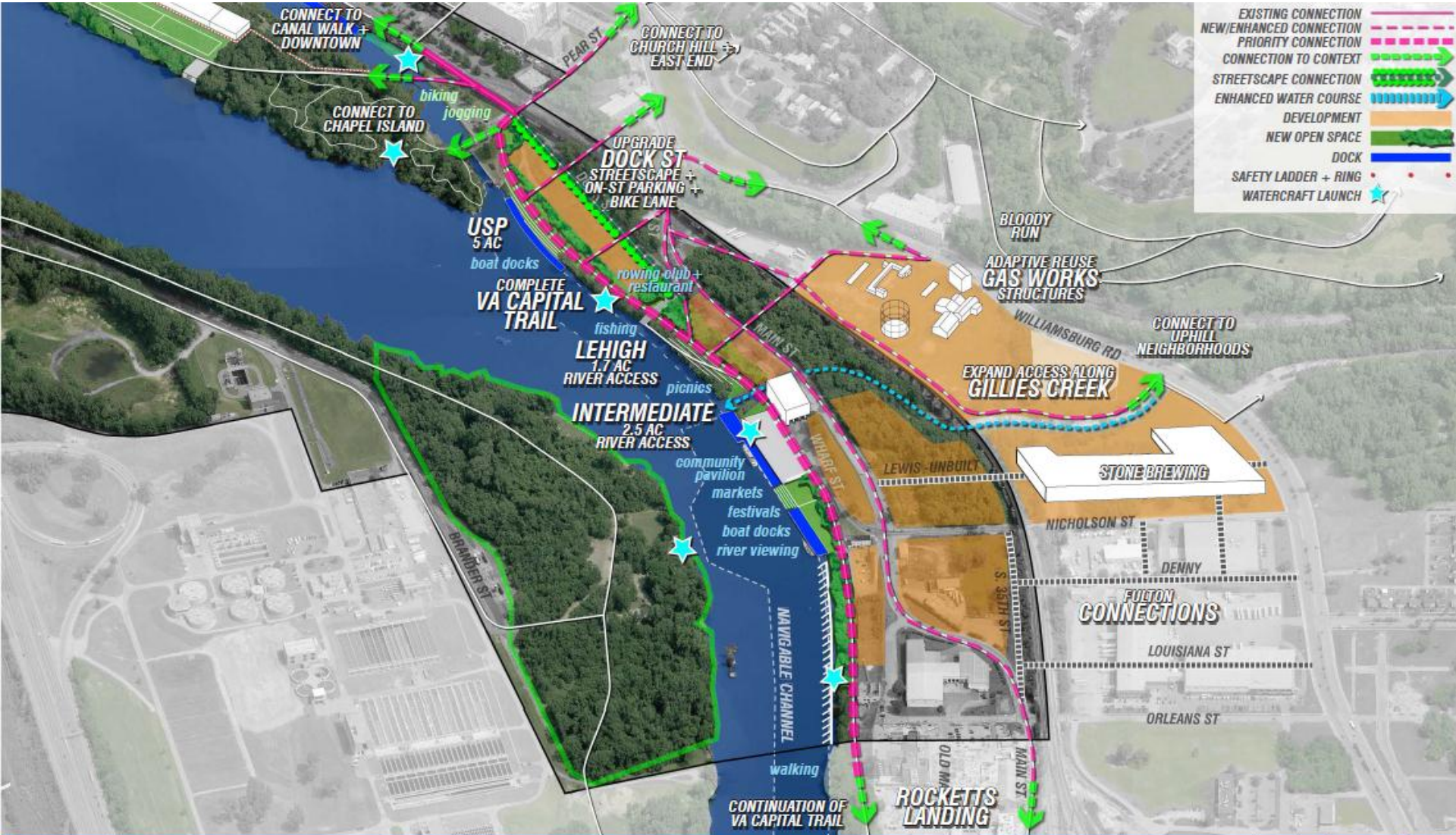
SCENIC RESOURCES: HISTORIC VIEW FROM LIBBY HILL

WHITE OUTLINE HIGHLIGHTS FORMER LOCATION OF LEHIGH CEMENT SILOS, REMOVED IN 2015









- EXISTING CONNECTION —
- NEW/ENHANCED CONNECTION - - -
- PRIORITY CONNECTION - - -
- CONNECTION TO CONTEXT →
- STREETSCAPE CONNECTION →→→
- ENHANCED WATER COURSE →
- DEVELOPMENT ■
- NEW OPEN SPACE ■
- DOCK ▬
- SAFETY LADDER + RING ●
- WATERCRAFT LAUNCH ★

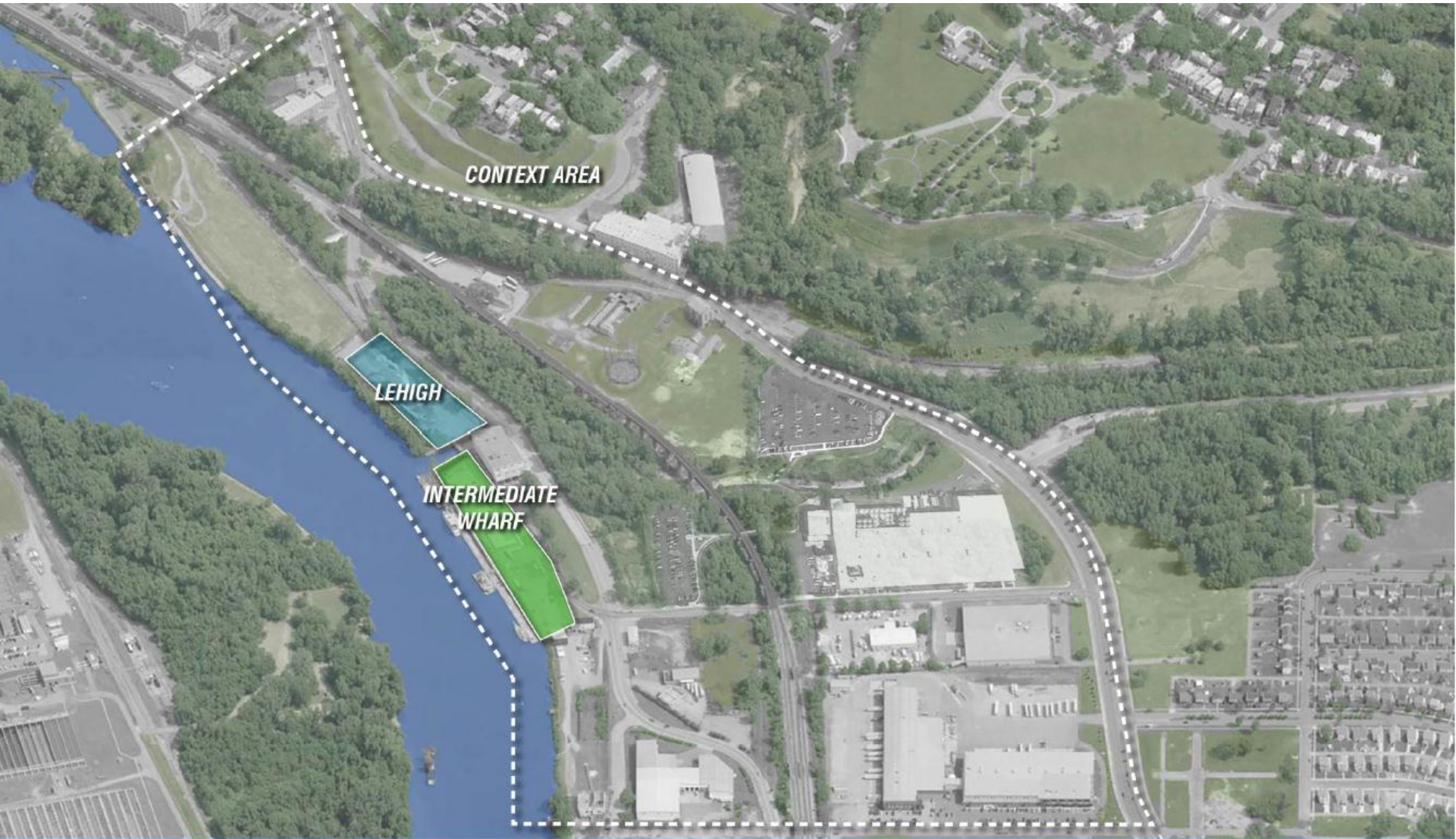
DOWNRIVER RIVERFRONT CONNECTIONS

0' 125' 250' 500' N



DOWNRIVER PARKING POTENTIAL





CONTEXT AREA

LEHIGH

INTERMEDIATE WHARF

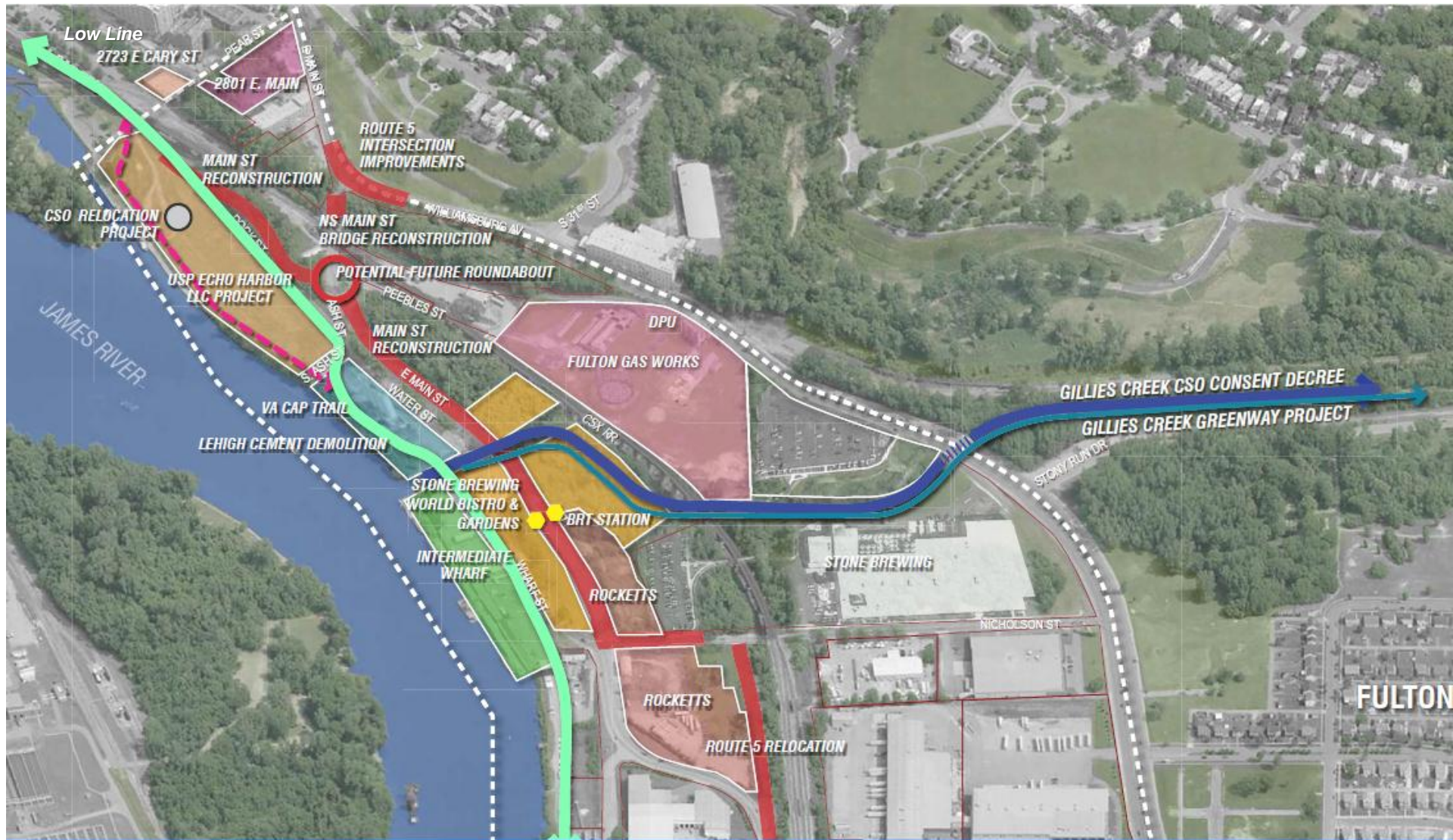
DOWNRIVER 2016 AREA OF STUDY



DOWNRIVER OPEN SPACE + RIVER ACCESS

The Lehigh Cement parcel is a prime location for downriver public open space and direct River access. With the demolition of the Lehigh silos and completion of the Virginia Capital Trail in 2015, the interim Lehigh parcel condition is poised to see even greater expansion as Dock Street will be removed. A new landscape balancing open lawn with shade canopy would offer options for passive recreation along the Capital Trail, while river access down to the James River provide public water access. Selective removal and replacement of volunteer species along this river edge will improve the native riparian shoreline.

This 2012 rendering shows an earlier illustration featuring terraced seatwalls stepping down to Gillies Creek, superseded by 2017 work.



DOWNRIVER REDEVELOPMENT INFRASTRUCTURE PROJECTS 2016

A scenic view of a river with large rocks and lush green vegetation. The river flows through a rocky landscape with dense green foliage on the banks. The water is clear and reflects the surrounding environment.

MULTIPLE ROUNDS OF PUBLIC & STAKEHOLDER ENGAGEMENT

- ***THREE LARGE PUBLIC MEETINGS:
MARCH 2016, AUGUST 2016, JANUARY 2017***
- ***INTERNAL & EXTERNAL STAKEHOLDERS:
JUNE 2016, AUGUST 2016, NOVEMBER 2016***
- ***~100 EMAILED COMMENTS***



DOWNRIVER 2016 CONNECTIONS





VA CAP TRAIL

DOWNRIVER GILLES CREEK GREENWAY, CONCEPTUAL ALIGNMENT

0' 75' 150' 300' N

A. ACTIVE



B. NATIVE



C. CULTURE



DOWNRIVER 3 CONCEPTS

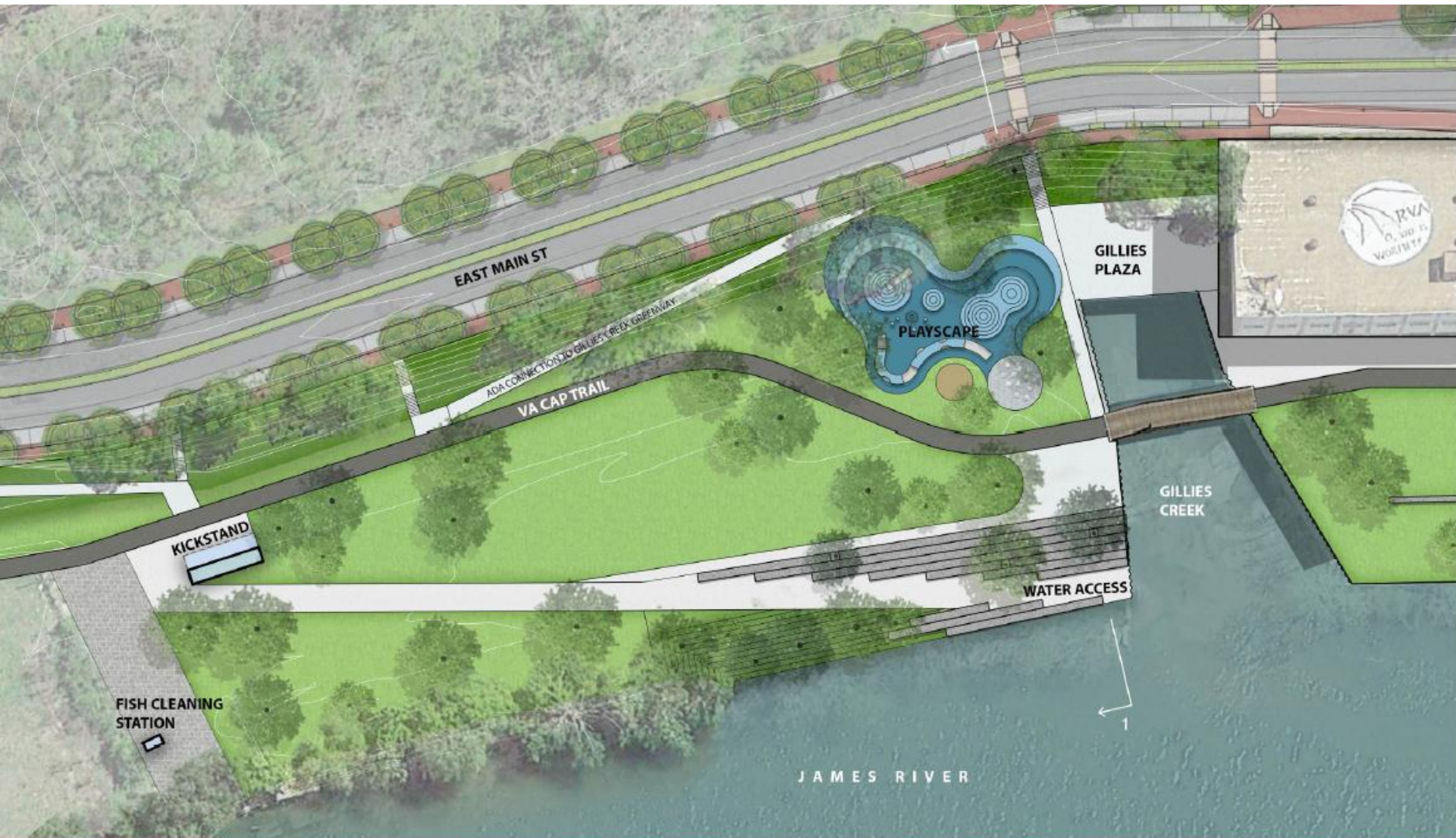
CONSENSUS TOPICS

- Virginia Capital Trail **alignment** modification
- Maximize the **'green'/vegetative** aspect of Lehigh, and Intermediate, too
 - Maintain the **social culture** of Ash St
 - Encourage **fishing**, beyond Ash St
- Accentuate Richmond **historical narrative** for this particular property
 - Vendors, focused on **river sports** and food concessions
 - Play environment to be **custom** & James River-inspired
 - Acknowledge that the full **wish list** cannot all “fit”



DOWNRIVER CONSENSUS PLAN - LEHIGH & INTERMEDIATE





DOWNRIVER CONSENSUS PLAN - LEHIGH





+ 33' (100-yr flood elevation)

EAST MAIN ST

PLAYSCAPE

VA CAP TRAIL

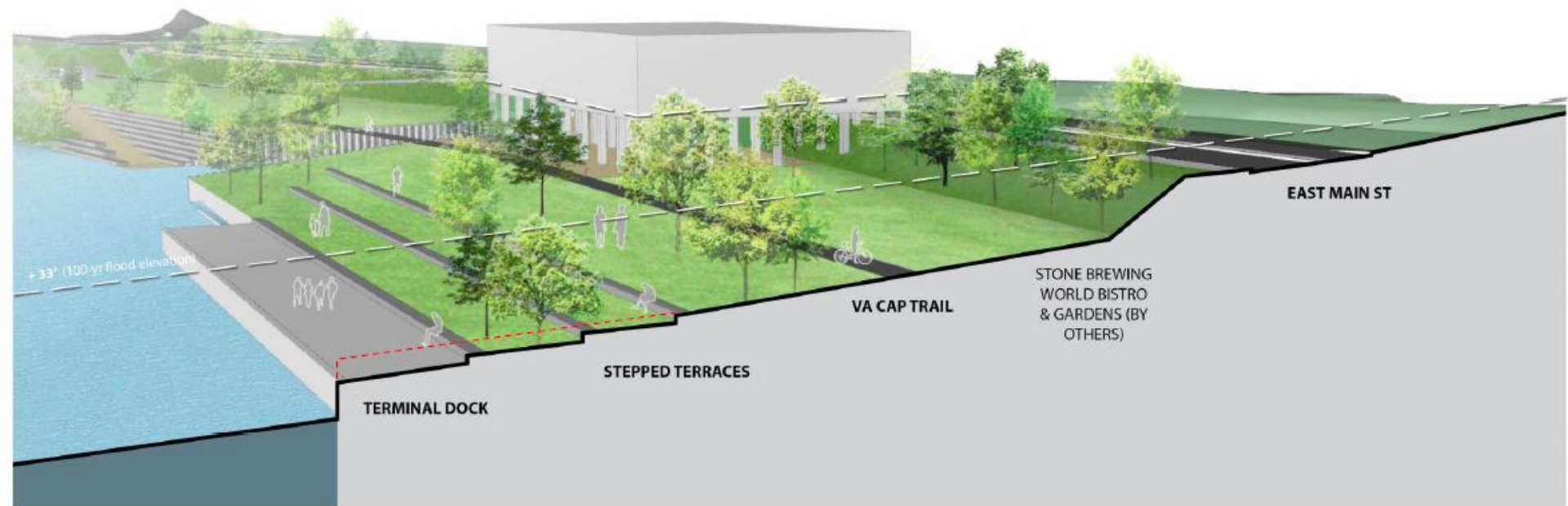
WATER ACCESS

DOWNRIVER SECTION 1 - LEHIGH



DOWNRIVER CONSENSUS PLAN - INTERMEDIATE

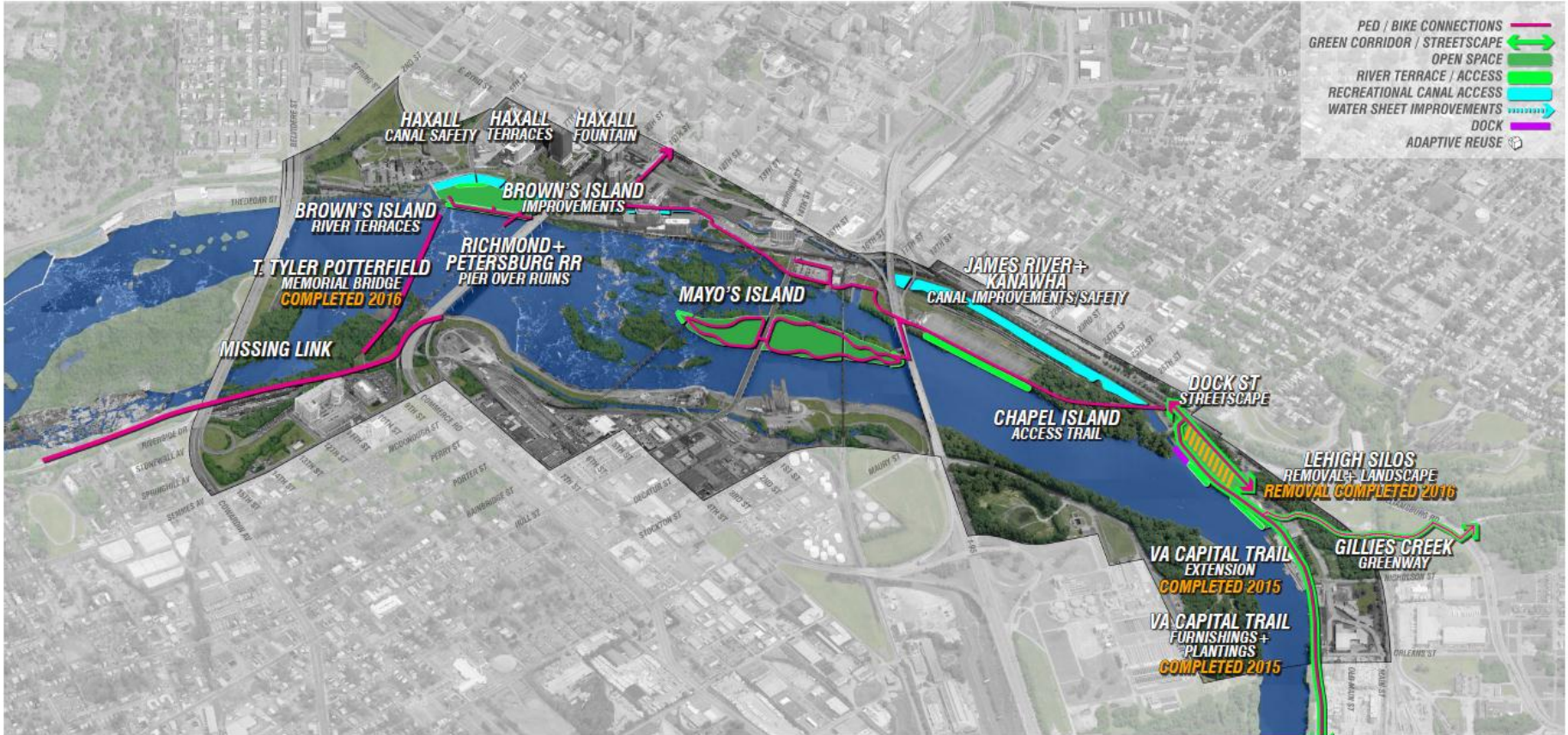




DOWNRIVER SECTION 2 - INTERMEDIATE

RICHMOND RIVERFRONT PLAN

2017

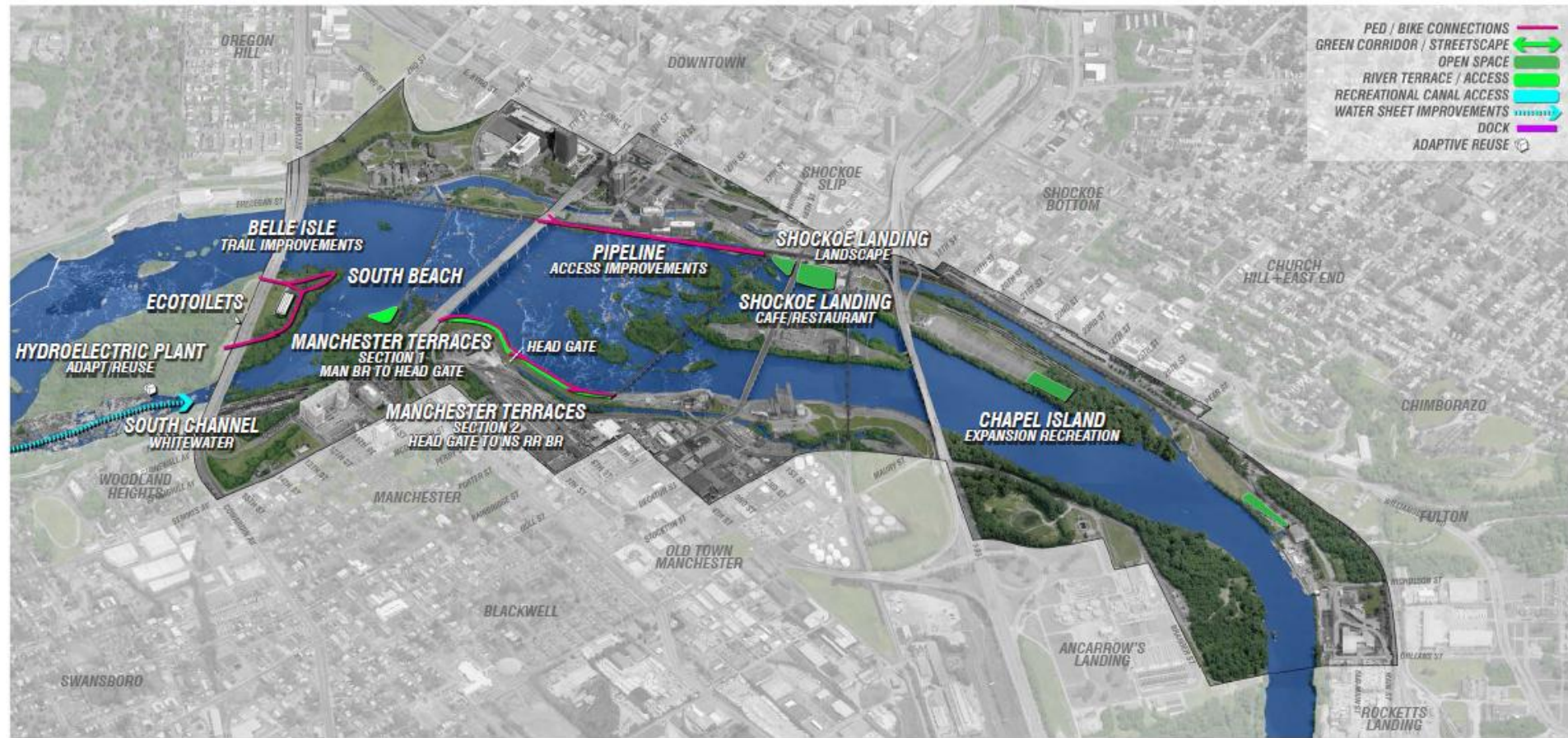


NOTE: excludes land acquisition, significant demolition or stabilization, contamination/remediation, escalation of costs, and soft costs.

PRIORITY 1



Initial Priority One projects are connective, favoring the ultimate completion of the Virginia Capital Trail, Brown's Island Dam Walk, the Missing Link Trail, and the Lehigh & Intermediate properties. Allocating funding to life safety improvements along both the Haxall and James River & Kanawha Canals provides added initiative to make the two water sheets available for recreational opportunities. The remainder of Priority One focuses on Brown's Island improvements and acquisition of Mayo's Island, with both expected to be phased upgrades.



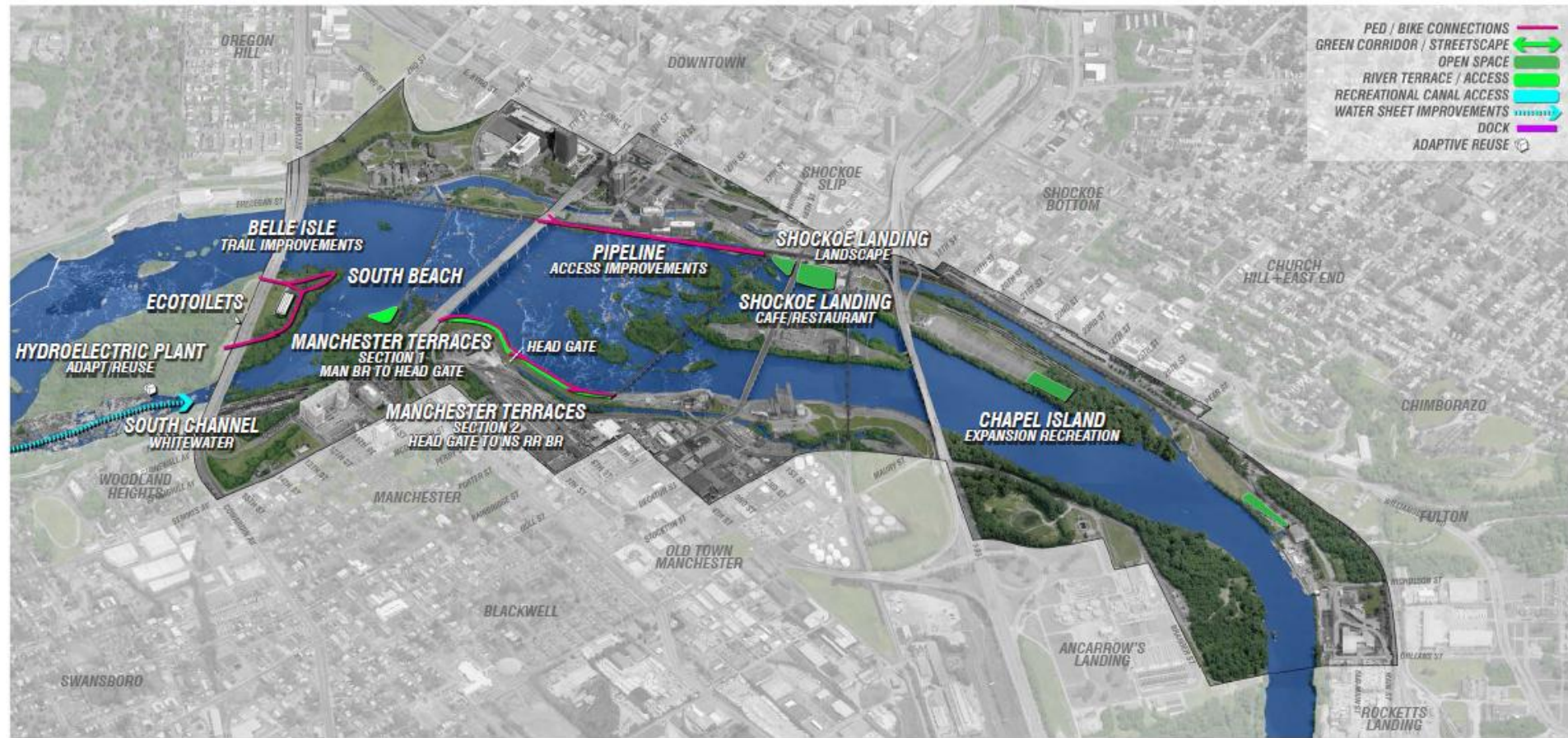
- PED / BIKE CONNECTIONS
- GREEN CORRIDOR / STREETSCAPE
- OPEN SPACE
- RIVER TERRACE / ACCESS
- RECREATIONAL CANAL ACCESS
- WATER SHEET IMPROVEMENTS
- DOCK
- ADAPTIVE REUSE

NOTE: excludes land acquisition, significant demolition or stabilization, contamination/remediation, escalation of costs, and soft costs.

PRIORITY 2



Connective projects remain in the majority, with accessibility improvements to existing routes, including the Pipeline Walk, the Manchester Terraces and Belle Isle trails. New destinations include Shockoe Landing, South Beach, and landscape program for the top of the anticipated expansion of the retention basin on Chapel Island.



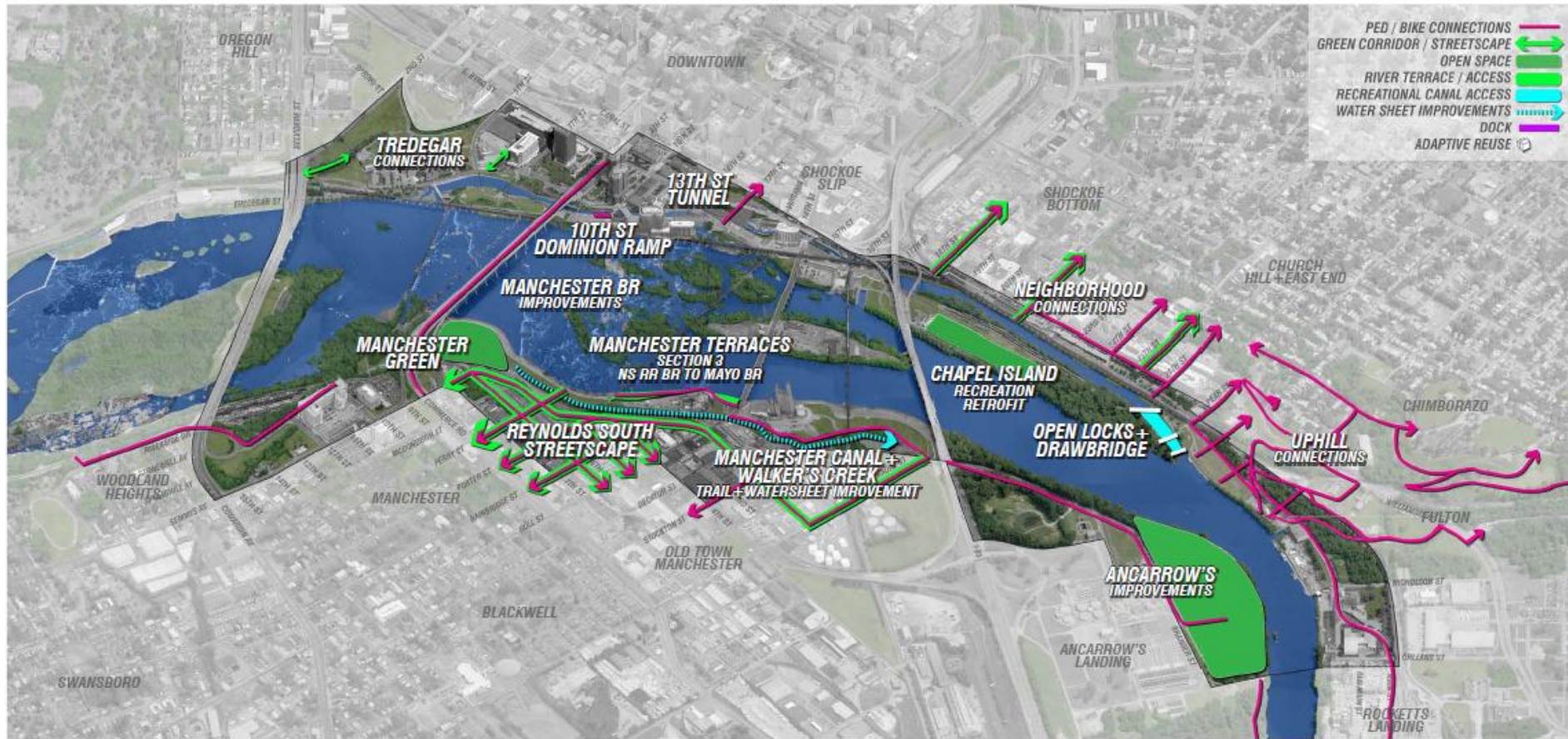
- PED / BIKE CONNECTIONS
- GREEN CORRIDOR / STREETSCAPE
- OPEN SPACE
- RIVER TERRACE / ACCESS
- RECREATIONAL CANAL ACCESS
- WATER SHEET IMPROVEMENTS
- DOCK
- ADAPTIVE REUSE

NOTE: excludes land acquisition, significant demolition or stabilization, contamination/remediation, escalation of costs, and soft costs.

PRIORITY 2



Connective projects remain in the majority, with accessibility improvements to existing routes, including the Pipeline Walk, the Manchester Terraces and Belle Isle trails. New destinations include Shockoe Landing, South Beach, and landscape program for the top of the anticipated expansion of the retention basin on Chapel Island.



NOTE: excludes land acquisition, significant demolition or stabilization, contamination/remediation, escalation of costs, and soft costs.

PRIORITY 3



Priority Three projects include reinstating operation of both the Great Shiplock and Chapel Island drawbridge, allowing boats to once again enter the lower James River & Kanawha Canal basin. Manchester Green is the primary new destination landscape, and the reconfiguration of the existing Chapel Island retention basin roof for recreational access. The remainder of projects are connective, embracing accessibility and streetscape improvements to maximize physical connections between river and neighborhoods.

A scenic view of a river with large rocks and lush green vegetation. The river flows through a rocky landscape with dense green plants and trees. The water is clear and reflects the surrounding environment.

***PRESENTATION TODAY, AVAILABLE AT CITY HALL
& ONLINE FOR PUBLIC REVIEW***

BRINGING FOR ADOPTION AT APRIL 3 CPC

COUNCIL ADOPTION IN JUNE 2017