

N/F
Orifice

N/F
Old Dominion
Restaurants, Inc.

Corner Inaccessible
(High Voltage Fence)

S62°19'00"E 60.00' Rod(f)

Adjoiner Shed
1.5' Over

Shed

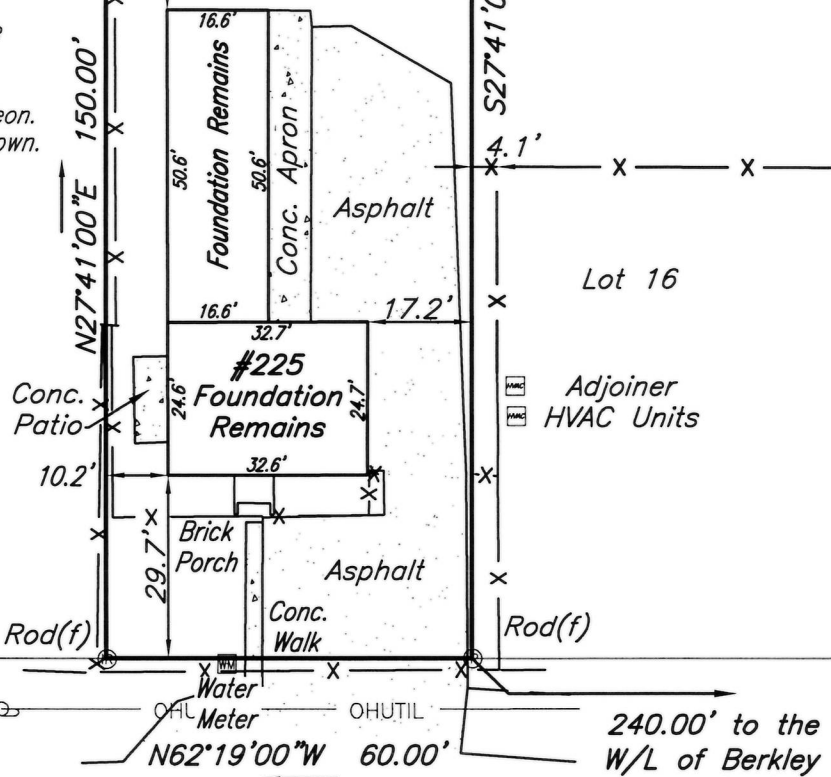
P.B. 8
P.C. 102-CCC

This is to certify that this plat or map was prepared under my direction from an actual field survey without the benefit of a title report. Unless otherwise noted, to the best of my knowledge and belief all visible evidence of improvements, easements and apparent encroachments are shown hereon. Not all easements may be shown. All utilities are underground.

Lot 15
Block 1
0.207 Acre

Lot 14

Lot 16



PLAZAVIEW ROAD
50' R/W

Improvements on
LOT 15, BLOCK 1, SECTION ONE 'A'
GREEN ACRES SUBDIVISION
City of Richmond, Virginia

DATE: 04/27/2017
SCALE: 1"=30'
JOB NO: 55170339.HS
Pur: Davis & Green Electrical

CHK: JAB
DWG: DSH

• PLANNERS • ARCHITECTS • ENGINEERS • SURVEYORS •

15871 City View Drive Suite 200 • Midlothian, Virginia 23113 • Phone (804) 794-0571 • Fax (804) 794-2635



J:\170339\55170339.HS\DRAWING\55170339.HS.DWG