

Mobile Modular's

# CampusMaker ModPod<sup>®</sup>

The Flexible Solution for Sustainable Learning Spaces



Serving California, Florida, Texas and Mid-Atlantic states.



# Adaptable Classrooms for Today's Changing Schools.

Sustainable and customized learning environments.

Fluctuating school enrollment. Shifting demographics. Changing expectations. The CampusMaker ModPod™ delivers the flexible solutions for today's rapidly evolving educational needs.

**Today's school districts are progressively seeking better, more secure and adaptable ways to make the most of their available space.** Now with the revolutionary CampusMaker ModPod, creating a reusable and sustainable learning environment has never been easier.

Constructed of durable materials and designed to be easily configured into a wide variety of self-contained classroom complexes, the CampusMaker ModPod delivers what every school needs: energy efficiency, security and a building design that is easily adaptable to different enrollment needs.

---

## Optimum Flexibility

The expandable and retractable design of the CampusMaker ModPod not only offers the ease of reconfiguration but also a wide variety of configuration options, enabling the Facilities Departments to prepare for most enrollment situations.

These configurations include restrooms, administrative offices, libraries, laboratories, music classrooms and more.

## Tangible Savings

The innovative side-by-side installation of the classrooms significantly reduces the length of utility runs, electrical and plumbing connections, walkways, stairs and access ramps.

All perimeter walls of each double classroom contained within a CampusMaker ModPod are finished as exterior walls. This allows for easy reconfiguration of the CampusMaker ModPod to a larger or smaller size based upon enrollment. Further, reconfiguration can be performed with minimal disruption to the adjacent classrooms.

## Safety and Security

When Mobile Modular designed the CampusMaker ModPod, one of our primary goals was to create a modular classroom system that ensured the safety and security of students and staff.

Each CampusMaker ModPod complex is accessed via an internal corridor with steel clad exterior doors, self-closers and panic hardware. To ensure further safety and security, each classroom is accessed through a solid core fire-rated door with a large view block and locking system.

All doors can be equipped with optional alarms, electronic entry control and easily integrated with each facility's primary security and life safety systems.



Let us take care of all of your space needs.

## Mobile Modular's CampusMaker ModPod® Complex

### Lighting (Not shown)

Energy-efficient T-8 lighting coupled with flexible switching for customized lighting control.

### HVAC

High-efficiency HVAC system with Heat Pump and an intelligent energy management system for a comfortable and properly ventilated interior.

### Roof (Not shown)

White EPDM cool-roof with batt-insulation in accordance with the IECC regulations reduces heat infiltration into the classroom. Traverse roof, designed to divert rainfall away from exterior openings.

### Windows

Dual pane windows with low-E glass helps reflect radiant energy, reduces heat gain and energy loads.

### Floor

Floor insulation in accordance with the IECC standards, vapor barrier, and glueless carpet tile improves the energy efficiency, comfort and durability of the CampusMaker ModPod.

### Exterior Wall

Permanent construction quality – 2" x 6" framing, plywood sheathing, commercial grade vapor barrier, batt-insulation in accordance with IECC and low maintenance interior and exterior finishes.

### Teaching Environment

Reduced sound transmission between classrooms enhances the teaching environment.

The above illustration depicts a six classroom CampusMaker ModPod complex, with a restroom module and integrated interior corridor. A CampusMaker ModPod classroom module is comprised of two classrooms (27'-0" x 28'-0")\* with an egress corridor. Each classroom is approximately 790 sq. ft. and can accommodate up to 35 students. The interior corridor is 8'-0" wide and is further enhanced with a one-hour-fire-rated construction to protect the occupants. Sprinklers can be installed for additional protection.

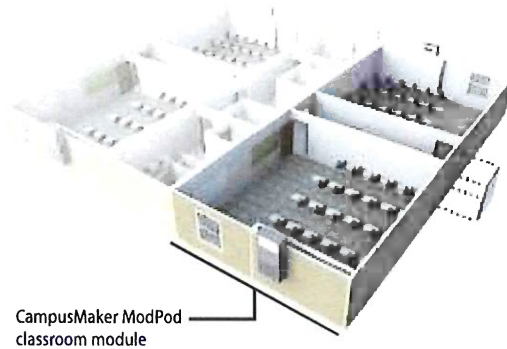
800.944.3442 | [www.mobilemodularrents.com](http://www.mobilemodularrents.com)

\*The availability of the product and its features may vary. Please contact your sales specialist for further information. These specifications are subject to change without notice.



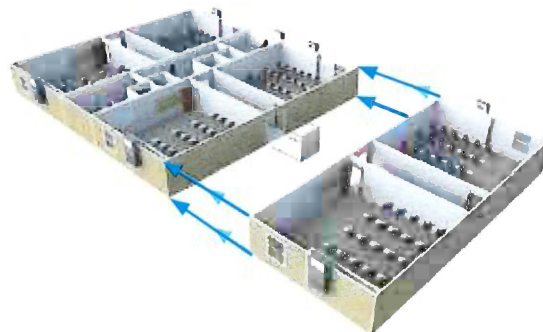
It's as easy as adding and subtracting.  
Protected, Flexible and Environmentally Friendly.

Four classroom configuration.



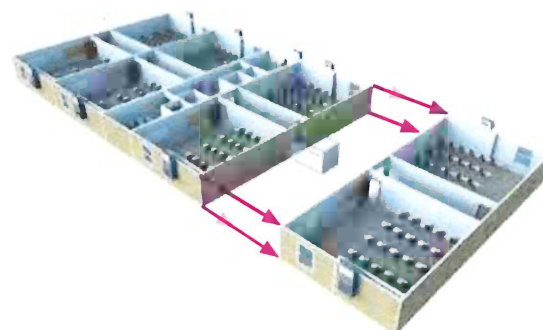
To adjust the size of the CampusMaker ModPod, the two classroom module at either end can be detached and relocated to another site or school. Construction of a new exterior wall is not required as the wall and finishes are already in place. This feature minimizes the down time due to construction and disruption to the remainder of the classroom complex.

Add an additional classroom module to expand the CampusMaker ModPod complex.



By simply removing and relocating the existing security entrance doors to the newly expanded CampusMaker ModPod, this classroom complex is set to operate with six classrooms, a restroom module and corridor. All this can be accomplished with minimal disruption to the occupants and in most cases, the work can be completed in just a few days.

Retract a classroom module to reduce the CampusMaker ModPod complex.



## All CampusMaker ModPod® classrooms feature:

- High-efficiency HVAC system with Heat Pump
- Intelligent energy management system, featuring automatic temperature, humidity and fresh air exchange controls
- High-performance building insulation
- Energy-efficient T-8 electronic ballast and lamps
- Commercial grade, heavy duty vapor barrier
- White EPDM Cool Roof
- Traverse roof, designed to divert rainfall drainage away from exterior openings
- Glueless carpet tiles - 100% recyclable, made from post consumer materials
- Dual pane low-E window

Additionally, the CampusMaker ModPod, also offers a comprehensive selection of options to meet the demands of even the most stringent specifications.

---

## CampusMaker ModPod sustainable options include:

- Passive shading devices
- UVC light for HVAC condenser cells
- CO<sub>2</sub> monitoring system
- Radiant heat barrier
- Tubular Daylighting System
- LED fixtures and lamps
- Natural fiber insulation
- Forest Stewardship Council (FSC) certified lumber
- Locally sourced materials
- Low-flush toilet with smart valve
- Tankless hot water heater
- Automated faucet
- Automated paper towel dispenser
- Automated hand soap dispenser







**Mobile Modular Management Corporation**

**Mid Atlantic Regional Office**  
4301-C Stuart Andrew Blvd.  
Charlotte, NC 28217

**Georgia Sales Office**  
Buford, GA

**Maryland - Washington D.C.  
& Virginia Sales Office**  
Bel Air, MD  
Brandywine, MD

**North Carolina Sales Office**  
Charlotte, NC

800.944.3442

[www.mobilemodularrents.com](http://www.mobilemodularrents.com)