



Department of
**General
Services**



**Bank Street
Enhancements**



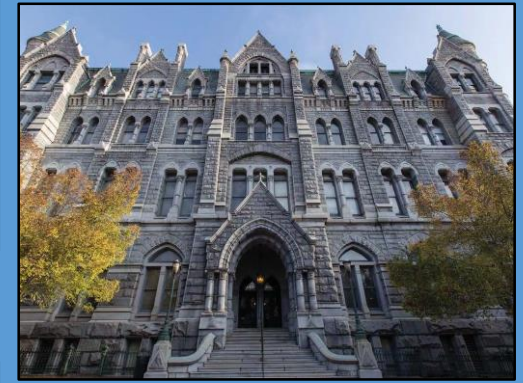
Transformation of Capitol Square



9th & Broad Parking Deck



General Assembly Building



Old City Hall

City Hall

BROAD STREET



9th Street Improvements



North Drive Enhancements

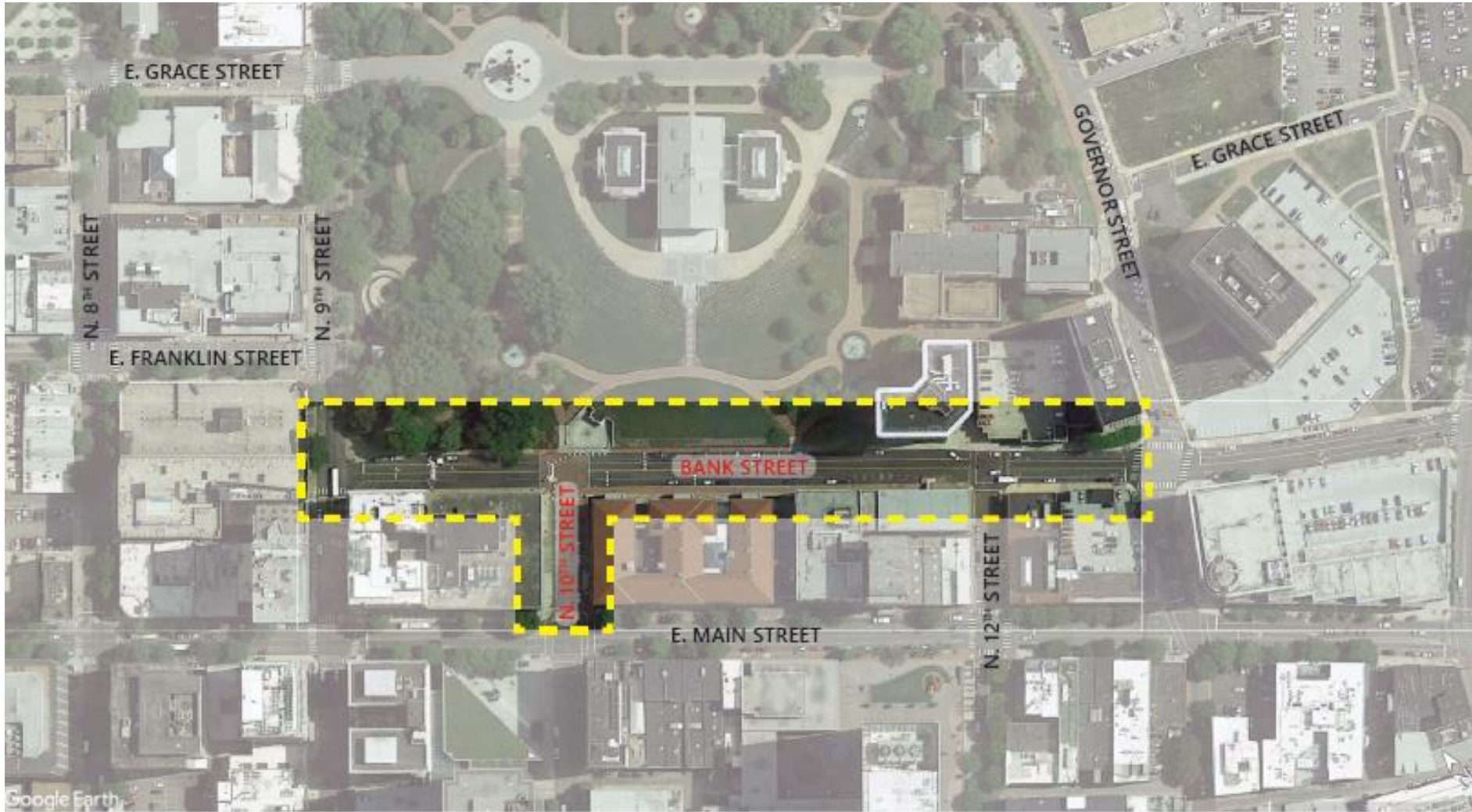


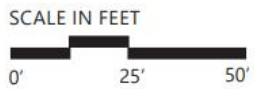
Morson's Row



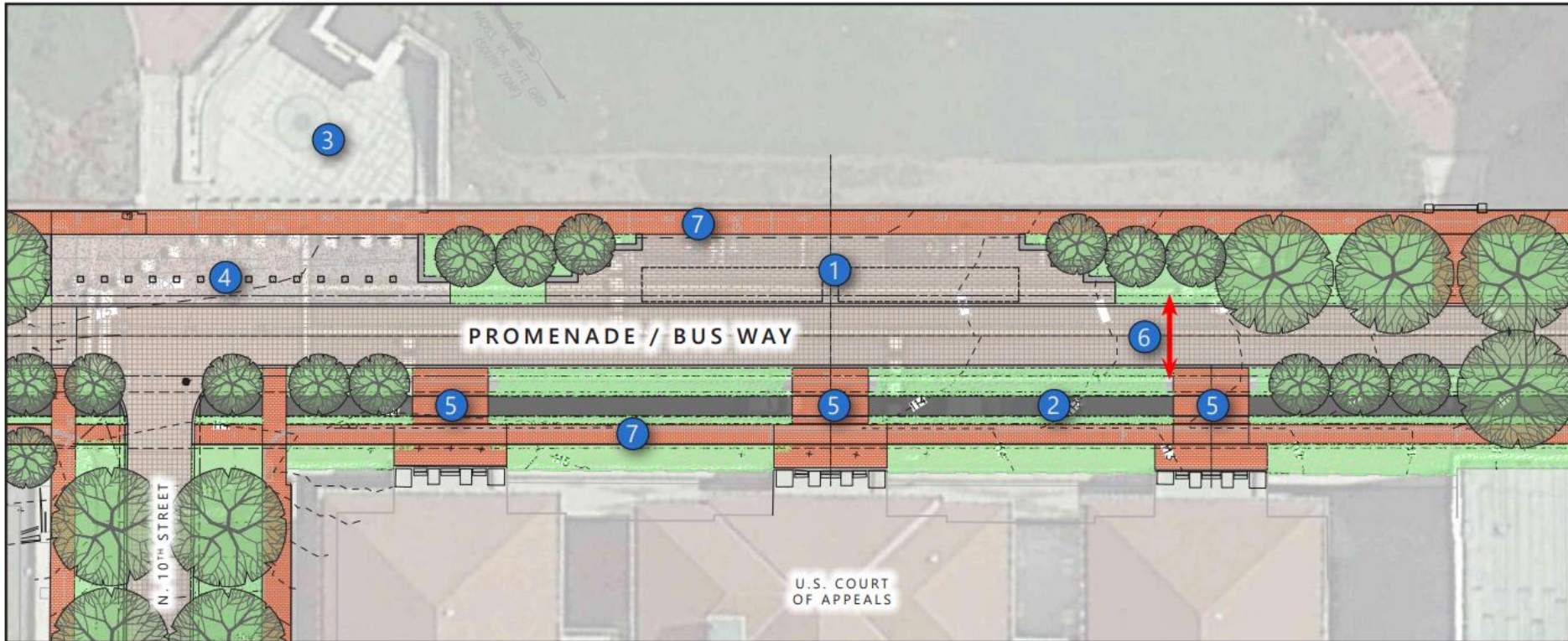
Bank Street Enhancements

- Complements improvements at other Capitol Square entry points
- Welcomes visitors, tourists, and Richmond residents
- Provides safe, secure pedestrian social areas near the Capitol
- Expands on 12 acres of existing green space
- Assists in storm water management
- Aides heat island reduction through strategic shade structures and addition of vegetation
- Plans completed in collaboration with the City





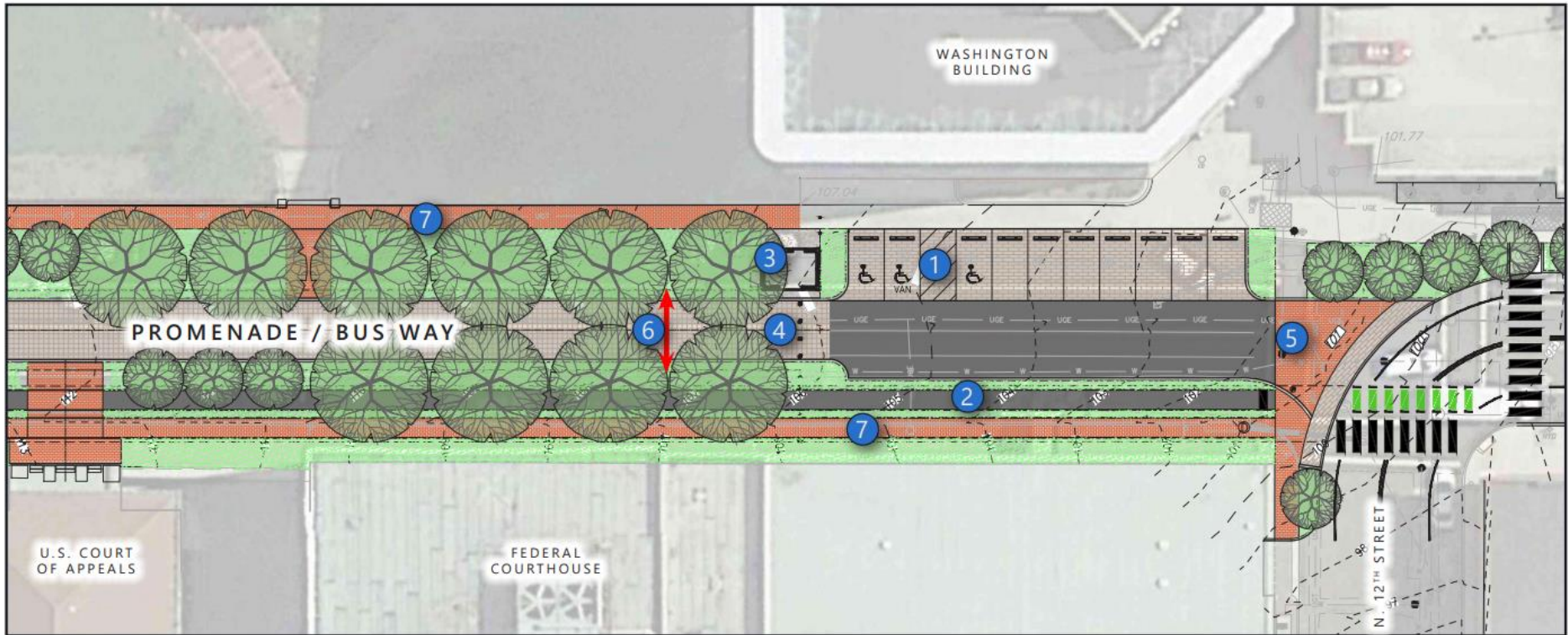
- 1 ADA / Short-term Parking
- 2 Hotel Entrance / Valet
- 3 Loading Area
- 4 Retractable Bollards
- 5 Short-term Hotel Parking
- 6 Access to Pocahontas Building
- 7 Dismount Bike Path - 5' width
- 8 Raised Pedestrian Crossing



- 1 Bus Loading / Unloading
- 2 Dismount Bike Path - 5' width
- 3 Visitor Center Plaza
- 4 Vehicular Barrier
- 5 Pedestrian Crossing
- 6 Fire Access - 20' Clear Zone
- 7 Pedestrian Walkway

SCALE IN FEET

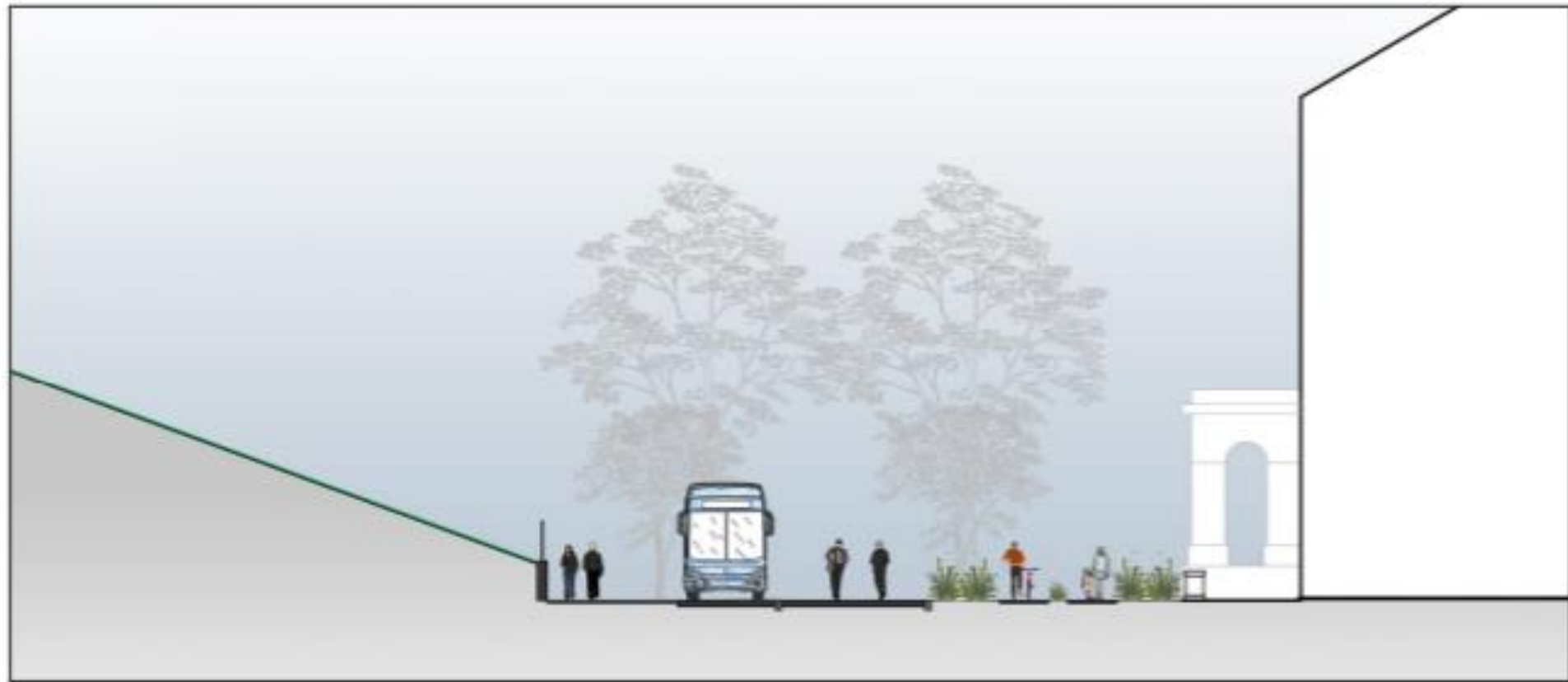




- ① ADA Parking
- ② Dismount Bike Path - 5' width
- ③ Guardhouse
- ④ Retractable Bollards
- ⑤ Raised Pedestrian Crossing
- ⑥ Fire Access - 20' Clear Zone
- ⑦ Pedestrian Walkway

SCALE IN FEET





	13.5'	10'	10'	7'	5'	7'	5'	6.5'	
CAPITOL LAWN	GROUP AREA + PEDESTRIAN WALKWAY	LOADING / UNLOADING	PROMENADE / BIKE WAY	PLANTING ZONE	DIS- MOUNT Bike RACK	BIKE WAY	PEDESTRIAN WALK WAY	PLANTING ZONE	W. COURT OF APRALS



