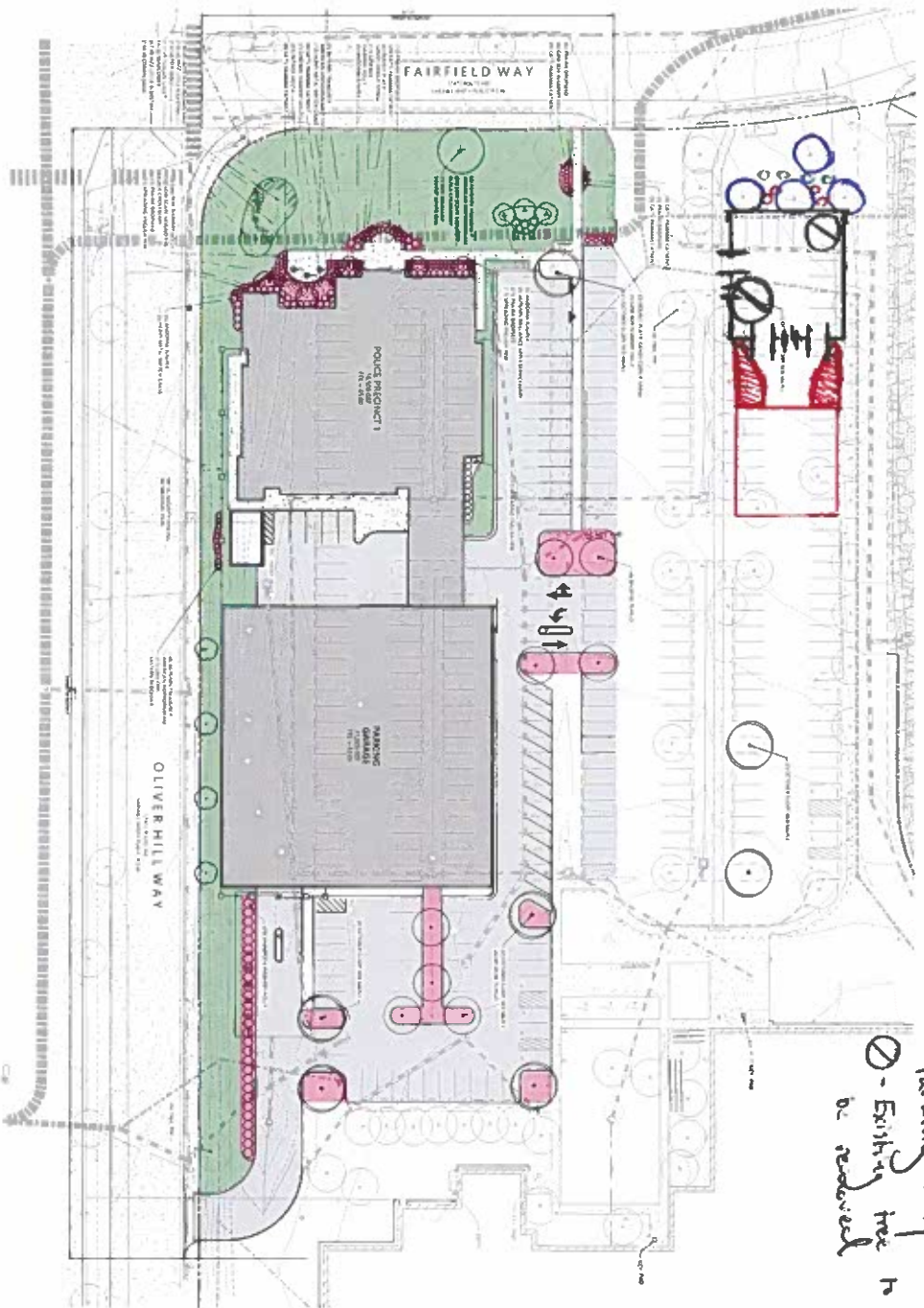


E.

# City of Richmond: New Police Station #1



- KEY**
- Existing Tree
  - Shamrock Ink Berry Holly
  - low scope mound Black Chokeberry
  - Eluminate Parking Sheriff's Office
  - Existing tree to be retained



### LANDSCAPE REQUIREMENTS:

**PERMITS AND FEES:**  
 PLANNING LOT INTERIOR LANDSCAPE DESIGN: \$2  
 PLANNING REVIEW: \$100  
**FURNISHED MATERIALS:**  
 TREE CANOPY: 27100 X 4.1 = 1080 SQ FT  
 PROVIDED: 4 \* 2 BK TREES = 4 TREES  
**OLIVER HILL MAINT. SHEET:**  
 REQUIRED: 00050 X 1.1 = 13 TREES  
 PROVIDED: 00050 X 4.1 = 48 SQUARE FEET  
 PROVIDED: 4 \* 8 BK TREES = 4 TREES

### LANDSCAPE NOTES:

- ALL DISTURBED AREAS TO BE SEEDED WITH TURF UNLESS OTHERWISE NOTED
- FINAL PLANT SELECTIONS SUBJECT TO CHANGE BASED ON PLANT AVAILABILITY, THE GENERAL QUANTITIES, TREE AND PLANTING BED LOCATIONS, AND CHARACTER WILL STRIVE TO REFLECT WHAT IS REPRESENTED IN THE IMDC SUBMITTAL.

### LANDSCAPE MAINTENANCE:

- LAWN AREAS TO BE MOWN AND MAINTAINED ACCORDING TO CITY OF RICHMOND STANDARD PRACTICES
- NON-FRUITING SHRUBS AND TREES TO BE PRUNED FOR STRUCTURAL AND CLEARANCE REASONS ONLY. PLANTING BED AREAS TO BE TOP DRESSED ANNUALLY WITH DOUBLE SHREDDED HARDWOOD MULCH.

### HARDSCAPE MAINTENANCE:

- SITE FURNISHINGS TO BE INSPECTED AND REPAIRED/REPLACED AS NEEDED
- FENCING TO BE INSPECTED AND REPAIRED/REPLACED AS NEEDED
- SIGNAGE TO BE CLEANED AND REPLACED AS NEEDED FOR MAINTENANCE AND LEGIBILITY
- TURF LAWN MAINTENANCE (ROUTINE MOWING + WATER TO ESTABLISHMENT)
- PLANT BED MAINTENANCE (SEASONAL WEEDING, PRUNING, MULCHING + WATERING FOR ESTABLISHMENT)



## Planting, Materials & Maintenance Plan

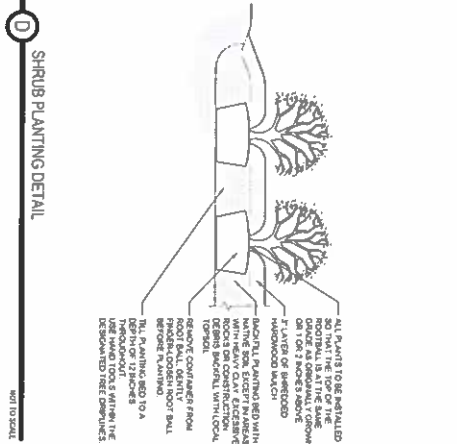
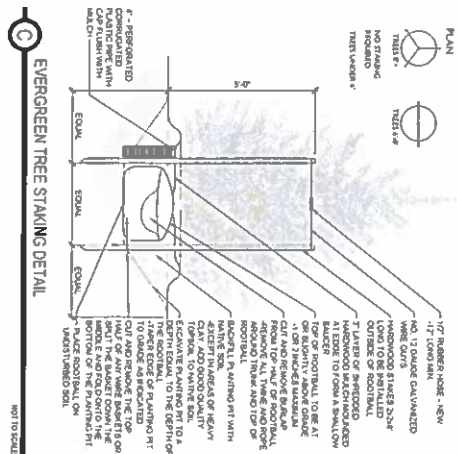
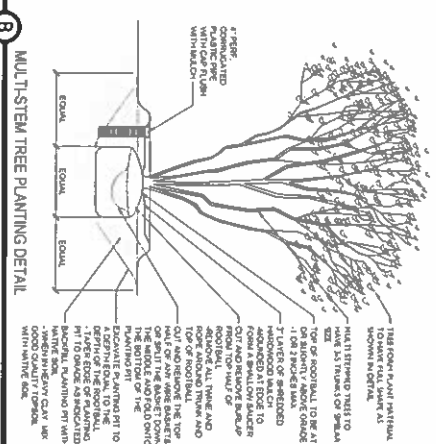
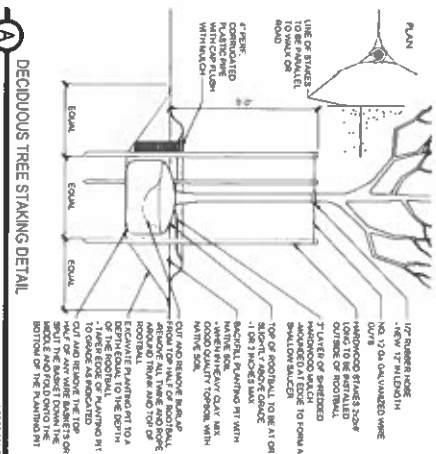
UDC Submission



# City of Richmond: New Police Station #1



## PLANTING DETAILS



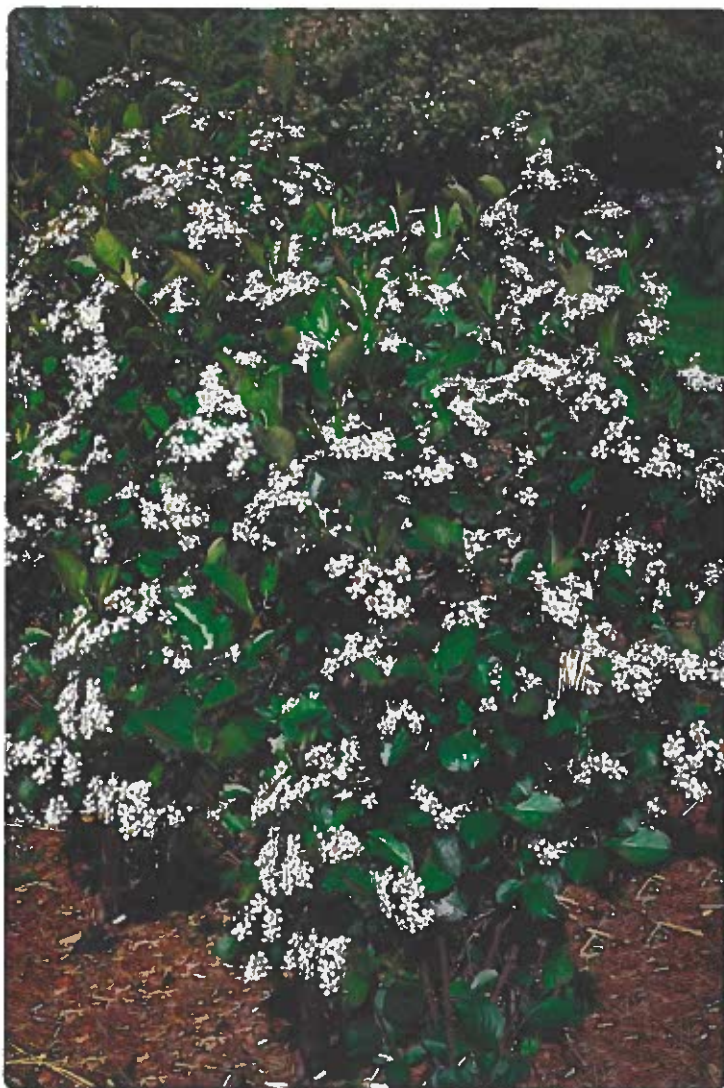
## PLANT MATERIAL SCHEDULE

ITEM NO.	DESCRIPTION	QUANTITY	UNIT	PLANT SPECIES	SIZE	HEIGHT	PLANTING	REMARKS
1	REDWOOD (SEMPERVIRENS DOUGL.) / CORONAR COLORADO MAPLE	1	EA	REDWOOD (SEMPERVIRENS DOUGL.) / CORONAR COLORADO MAPLE	12\"/>			

## Planting, Materials Schedule & Details

UDC Submission





**\$21.99+**

Black Chokeberry



TNNurseryShop

★★★★☆



Returns & exchanges accepted

Size

Select a size

Add to cart

Add both to cart

See more items

Item details



Handmade

Sign Up & Save 10%



# Woodies GARDEN GOODS

FREE GROUND SHIPPING  
ON ORDERS OVER \$129\*

\*Some Exclusions May Apply



≡ MENU

Home | Shamrock Inkberry Holly 

