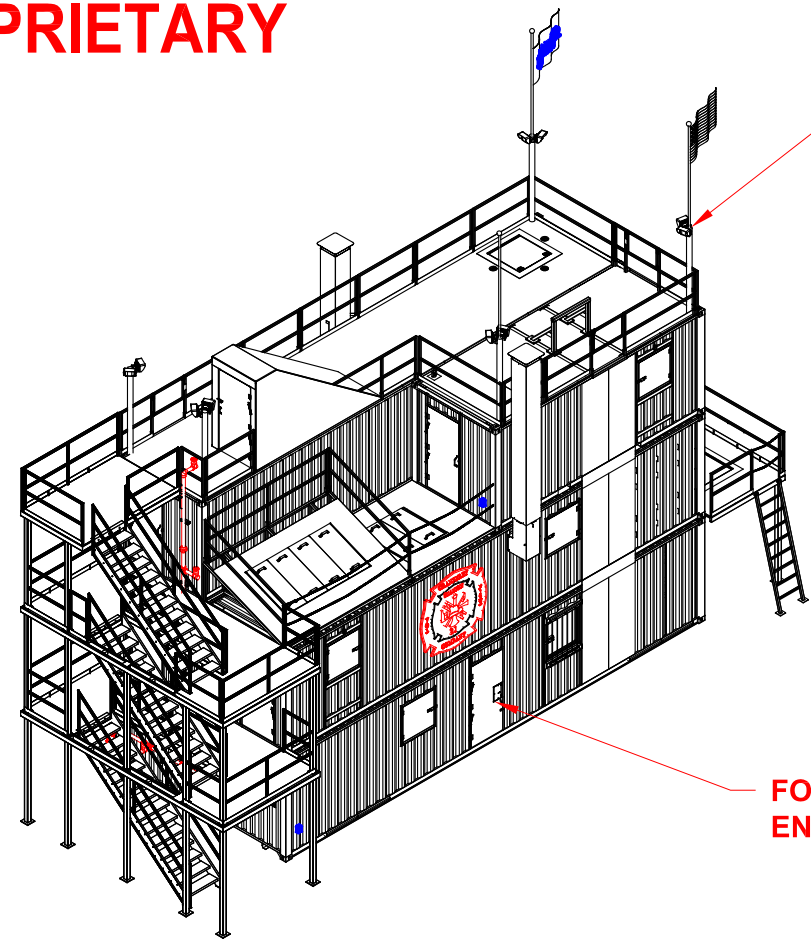
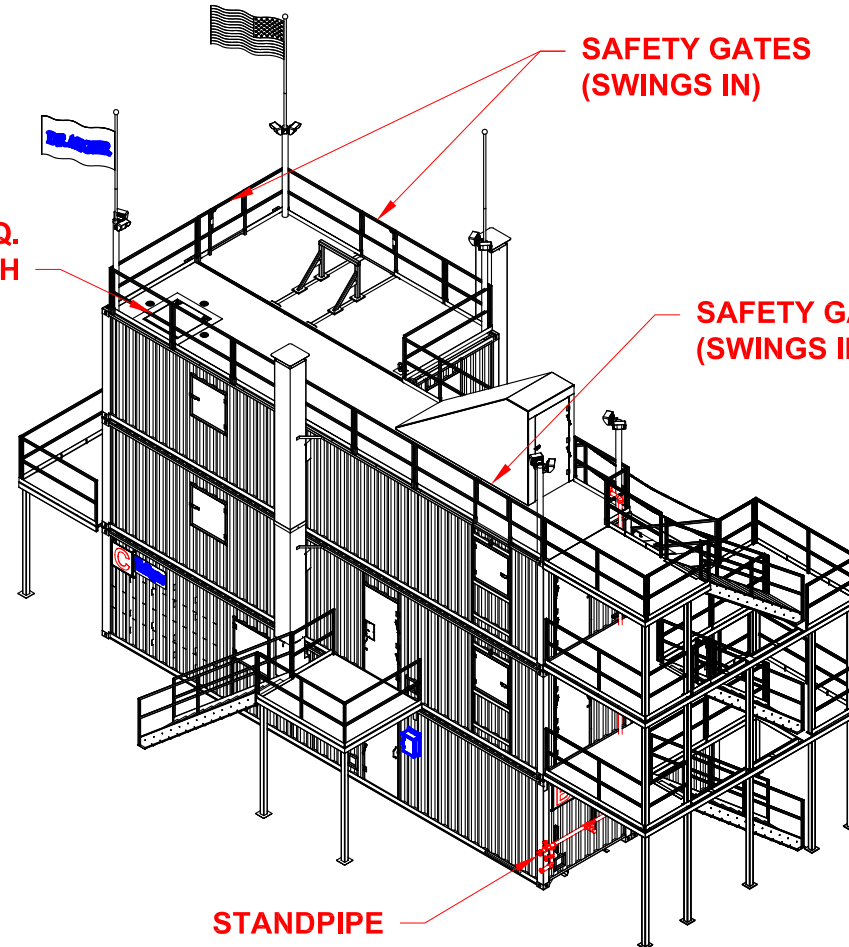


**PROPRIETARY**



**EXTERIOR LIGHTING  
(QTY & LOCATION TBD)**

**FORCIBLE  
ENTRY DOOR**

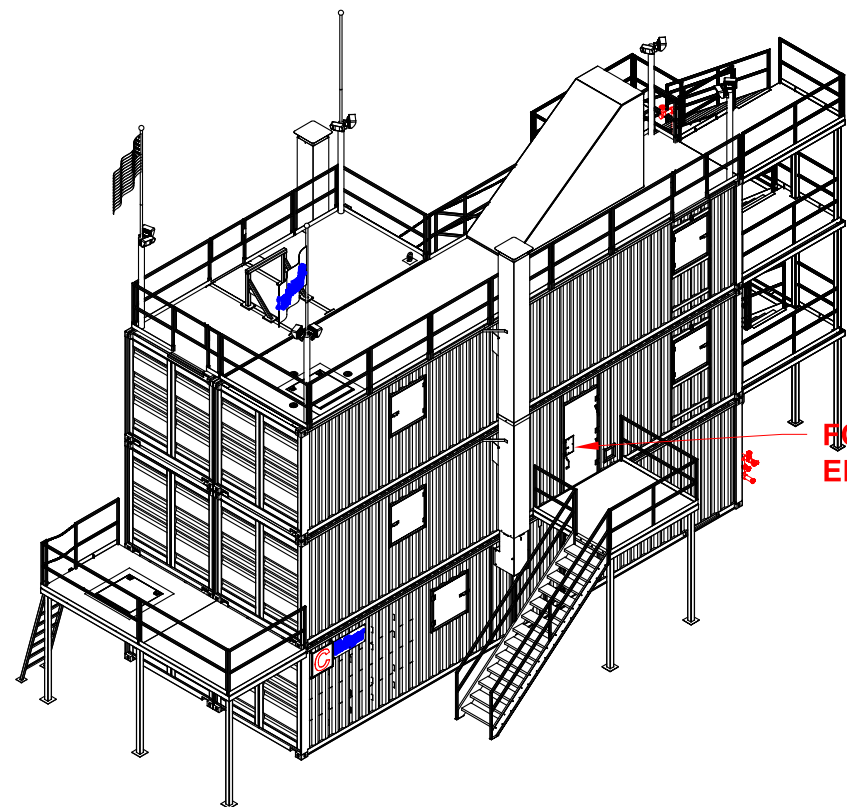


**SAFETY GATES  
(SWINGS IN)**

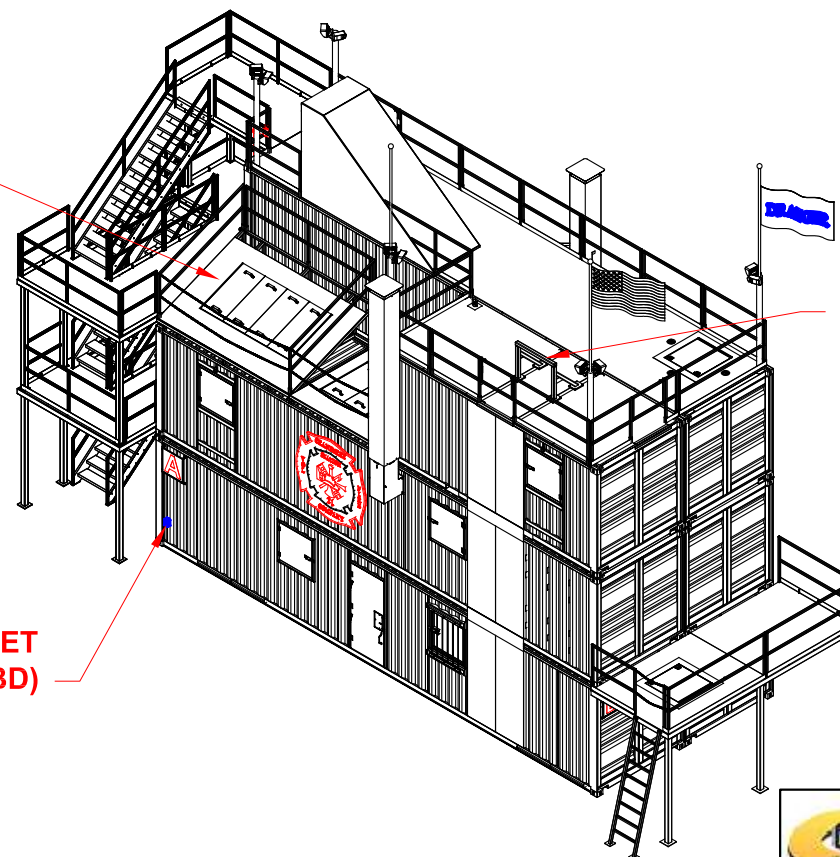
**SQ.  
HATCH**

**SAFETY GATE  
(SWINGS IN)**

**STANDPIPE**



**FORCIBLE  
ENTRY DOOR**



**TILT ROOF  
PROP**

**RAPPELLING  
BAR**

**GFI OUTLET  
(QTY & LOCATION TBD)**

**ISO**



THIS DRAWING AND THE INFORMATION HEREIN CONTAINED ARE THE PROPERTY OF DRAGER Inc. WHICH HAS FURNISHED THEM IN CONFIDENCE UPON THE UNDERSTANDING AND CONDITIONS ALL PERSONS, FIRMS OR CORPORATIONS RECEIVING SUCH DRAWING AND INFORMATION SHALL BY THE ACT OF RECEIVING THEM BE DEEMED TO HAVE AGREED; TO MAKE NO COPY, DUPLICATION, DISCLOSURE OR USE WHATSOEVER OF ALL OR ANY PART THEREOF EXCEPT AS EXPRESSLY AUTHORIZED IN WRITING BY DRAGER Inc.

THESE DRAWINGS ARE FOR CONCEPTUAL USE ONLY. NOT FOR FABRICATION.

C	02/11/21	REVISED PER CUSTOMER
B	02/03/20	REVISED PER CUSTOMER
REV.#	DATE	DESCRIPTION

**Dräger**

PRODUCT PHASE II MODIFIED

CUSTOMER RICHMOND FIRE ACADEMY

TITLE ISO

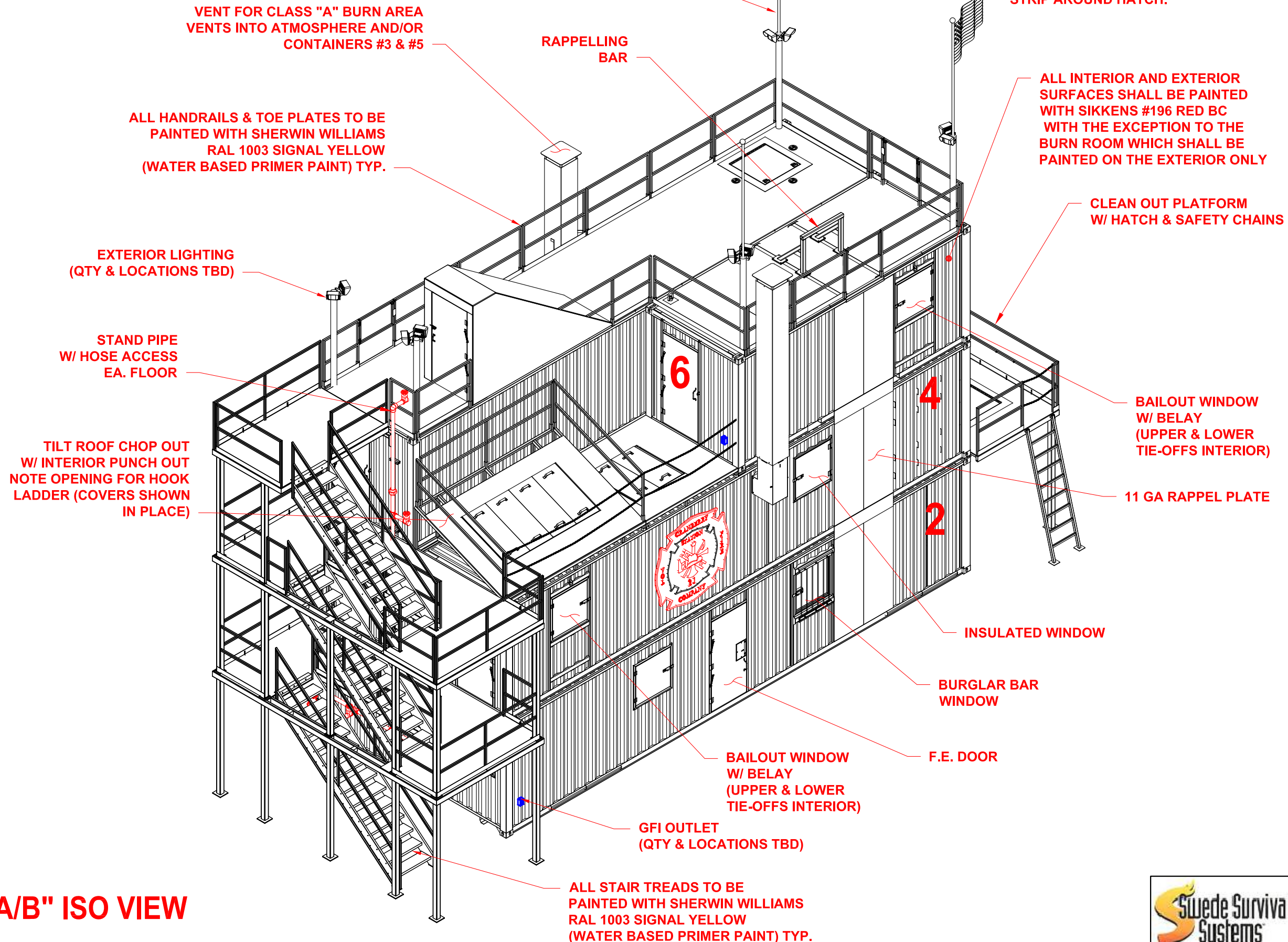
DWG NO. SHEET 01 OF 21

DATE DEC 12, 2020 SCALE NTS

DWN BY J. HAWLEY REV. C

PO# 4302279950-00010

**PROPRIETARY**



**NOTE:**  
 ALL HATCHES TO BE PAINTED WITH SHERWIN WILLIAMS RAL 1003 SIGNAL YELLOW (WATER BASED PRIMER PAINT) FOR THE HATCH AND A 6" YELLOW STRIP AROUND HATCH.

THIS DRAWING AND THE INFORMATION HEREIN CONTAINED ARE THE PROPERTY OF DRAGER Inc. WHICH HAS FURNISHED THEM IN CONFIDENCE UPON THE UNDERSTANDING AND CONDITIONS ALL PERSONS, FIRMS OR CORPORATIONS RECEIVING SUCH DRAWING AND INFORMATION SHALL BY THE ACT OF RECEIVING THEM BE DEEMED TO HAVE AGREED; TO MAKE NO COPY, DUPLICATION, DISCLOSURE OR USE WHATSOEVER OF ALL OR ANY PART THEREOF EXCEPT AS EXPRESSLY AUTHORIZED IN WRITING BY DRAGER Inc.

THESE DRAWINGS ARE FOR CONCEPTUAL USE ONLY. NOT FOR FABRICATION.

REV.#	DATE	DESCRIPTION
C	02/11/21	REVISED PER CUSTOMER
B	01/05/21	REVISED PER CUSTOMER



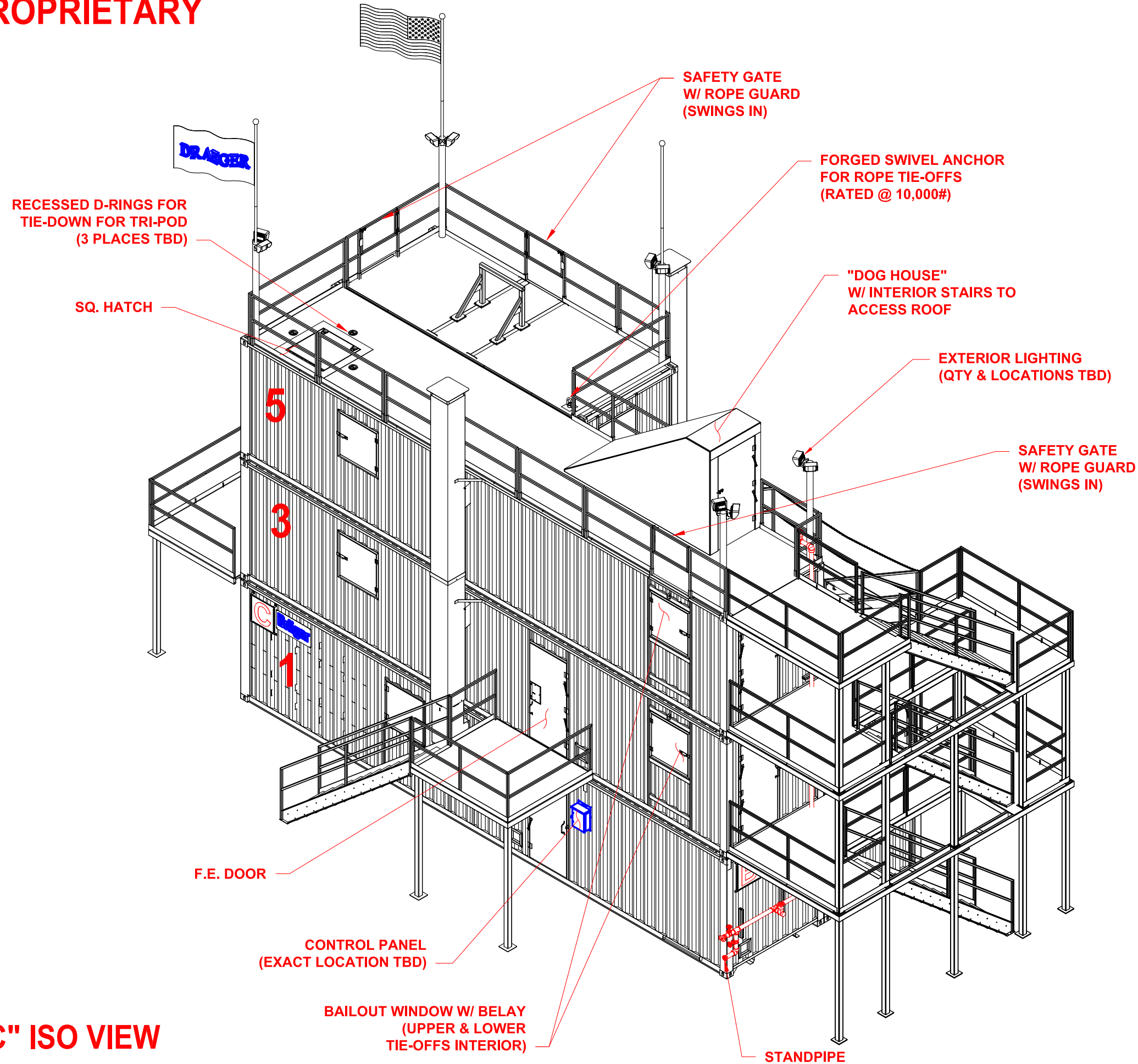
PRODUCT	PHASE II MODIFIED	
CUSTOMER	RICHMOND FIRE ACADEMY	
TITLE	A/B ISO VIEW	
DWG NO.	SHEET 02 OF 21	

DATE	DEC 12, 2020	SCALE	NTS
DWN BY	J. HAWLEY	REV.	C
PO#	4302279950-00010		



**"A/B" ISO VIEW**

**PROPRIETARY**



**"B/C" ISO VIEW**

THIS DRAWING AND THE INFORMATION HEREIN CONTAINED ARE THE PROPERTY OF DRAGER Inc. WHICH HAS FURNISHED THEM IN CONFIDENCE UPON THE UNDERSTANDING AND CONDITIONS ALL PERSONS, FIRMS OR CORPORATIONS RECEIVING SUCH DRAWING AND INFORMATION SHALL BY THE ACT OF RECEIVING THEM BE DEEMED TO HAVE AGREED; TO MAKE NO COPY, DUPLICATION, DISCLOSURE OR USE WHATSOEVER OF ALL OR ANY PART THEREOF EXCEPT AS EXPRESSLY AUTHORIZED IN WRITING BY DRAGER Inc.

THESE DRAWINGS ARE FOR CONCEPTUAL USE ONLY. NOT FOR FABRICATION.

C	02/11/21	REVISED PER CUSTOMER
B	01/05/21	REVISED PER CUSTOMER
REV.#	DATE	DESCRIPTION



PRODUCT PHASE II MODIFIED

CUSTOMER RICHMOND FIRE ACADEMY

TITLE B/C ISO VIEW

DWG NO. SHEET 03 OF 21

DATE DEC 12, 2020 SCALE NTS

DWN BY J. HAWLEY REV. C

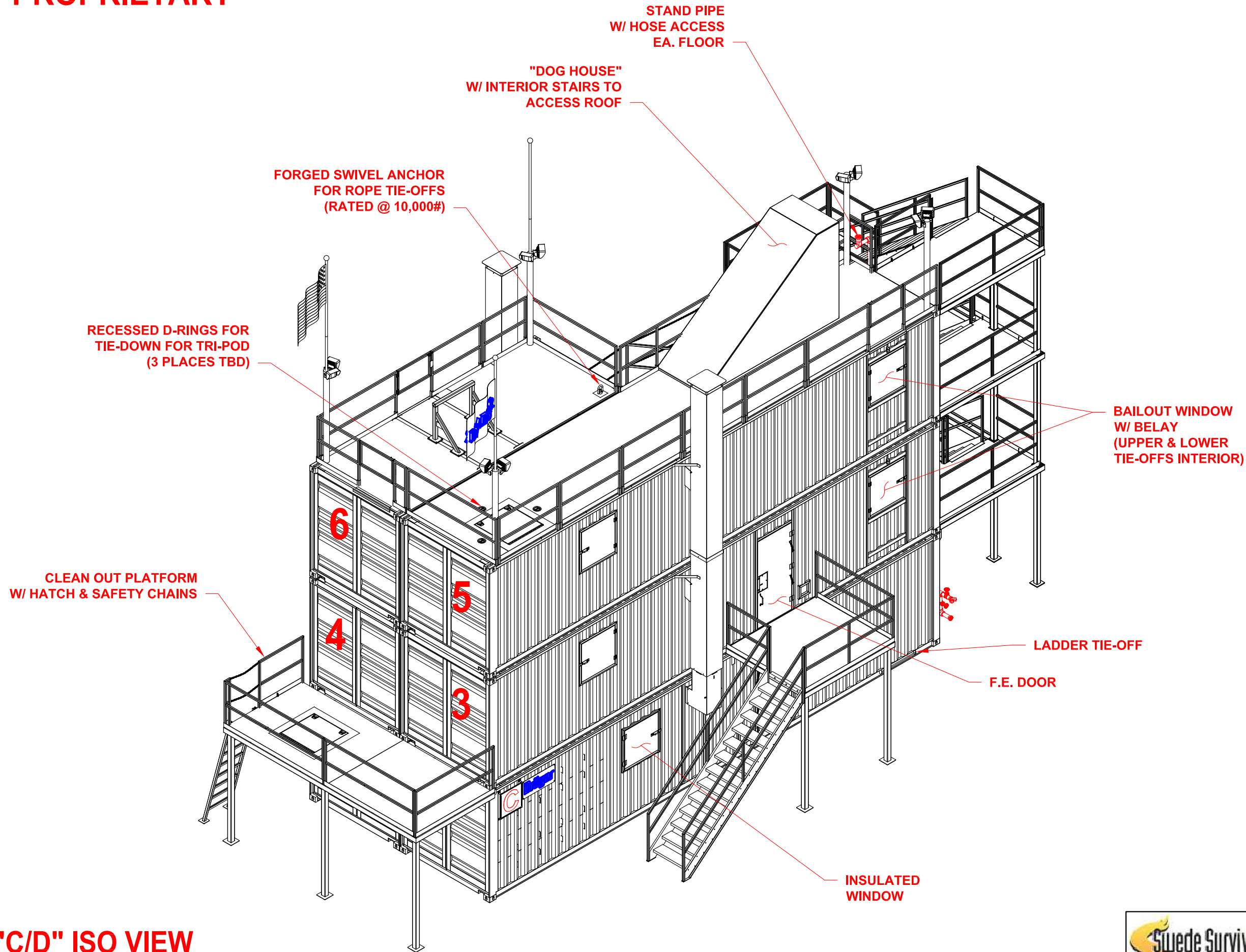
PO# 4302279950-00010



**PROPRIETARY**

THIS DRAWING AND THE INFORMATION HEREIN CONTAINED ARE THE PROPERTY OF DRAGER Inc. WHICH HAS FURNISHED THEM IN CONFIDENCE UPON THE UNDERSTANDING AND CONDITIONS ALL PERSONS, FIRMS OR CORPORATIONS RECEIVING SUCH DRAWING AND INFORMATION SHALL BY THE ACT OF RECEIVING THEM BE DEEMED TO HAVE AGREED; TO MAKE NO COPY, DUPLICATION, DISCLOSURE OR USE WHATSOEVER OF ALL OR ANY PART THEREOF EXCEPT AS EXPRESSLY AUTHORIZED IN WRITING BY DRAGER Inc.

THESE DRAWINGS ARE FOR CONCEPTUAL USE ONLY. NOT FOR FABRICATION.



**"C/D" ISO VIEW**

C	02/11/21	REVISED PER CUSTOMER
B	01/05/21	REVISED PER CUSTOMER
REV.#	DATE	DESCRIPTION



PRODUCT PHASE II MODIFIED

CUSTOMER RICHMOND FIRE ACADEMY

TITLE C/D ISO VIEW

DWG NO. SHEET 04 OF 21

DATE DEC 12, 2020 SCALE NTS

DWN BY J. HAWLEY REV. C

PO# 4302279950-00010



**PROPRIETARY**

TILT ROOF CHOP OUT  
W/ INTERIOR PUNCH OUT

"DOG HOUSE"  
W/ INTERIOR STAIRS TO  
ACCESS ROOF

VENT FOR CLASS "A" BURN AREA  
VENTS INTO ATMOSPHERE AND/OR  
CONTAINERS #3 & #5

FORGED SWIVEL ANCHOR  
FOR ROPE TIE-OFFS  
(RATED @ 10,000#)

RECESSED D-RINGS FOR  
TIE-DOWN FOR TRI-POD  
(3 PLACES TBD)

INSULATED  
WINDOW

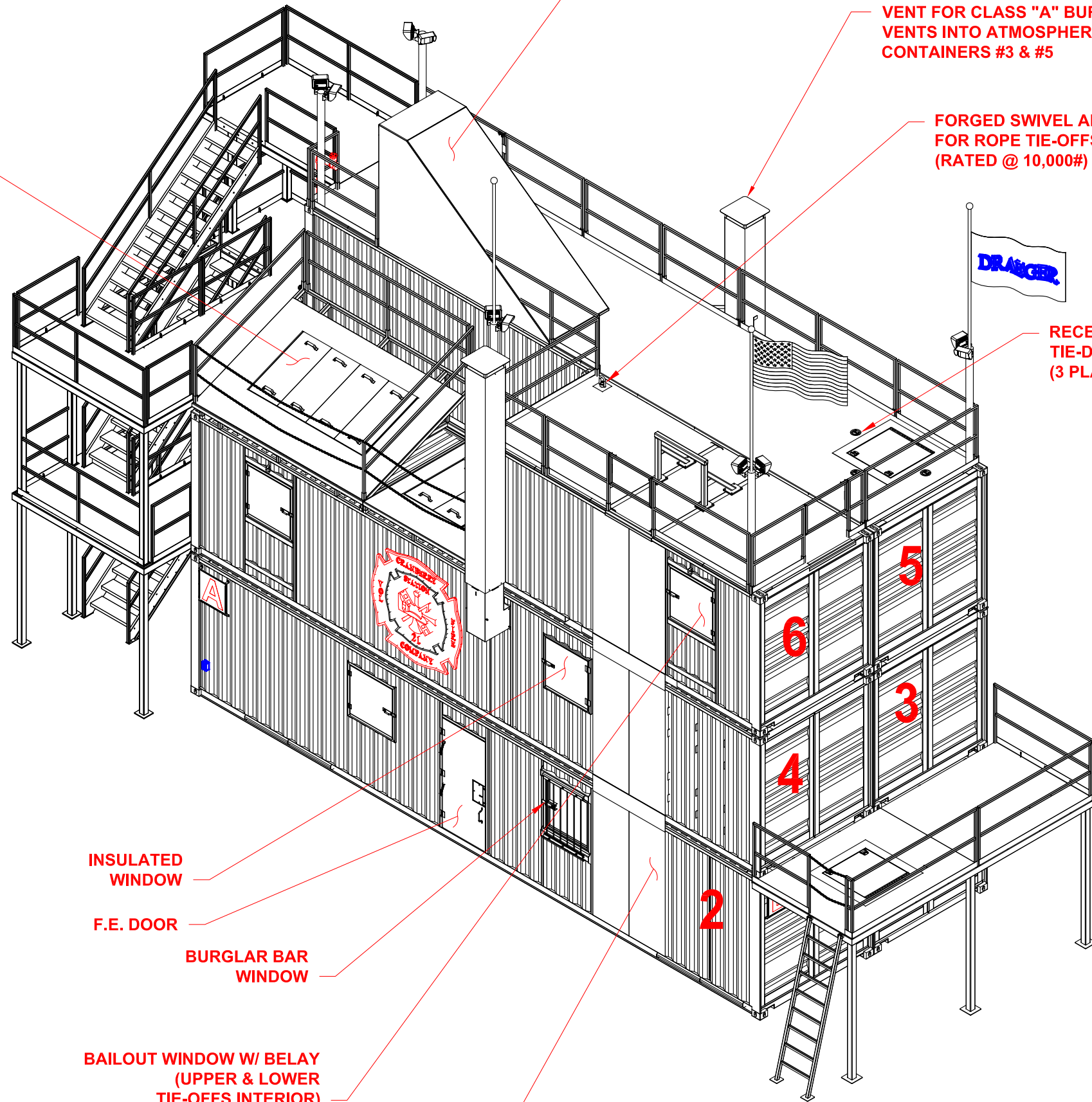
F.E. DOOR

BURGLAR BAR  
WINDOW

BAILOUT WINDOW W/ BELAY  
(UPPER & LOWER  
TIE-OFFS INTERIOR)

11 GA RAPPEL  
PLATE

**"A/D" ISO VIEW**



THIS DRAWING AND THE INFORMATION HEREIN CONTAINED ARE THE PROPERTY OF DRAGER Inc. WHICH HAS FURNISHED THEM IN CONFIDENCE UPON THE UNDERSTANDING AND CONDITIONS ALL PERSONS, FIRMS OR CORPORATIONS RECEIVING SUCH DRAWING AND INFORMATION SHALL BY THE ACT OF RECEIVING THEM BE DEEMED TO HAVE AGREED; TO MAKE NO COPY, DUPLICATION, DISCLOSURE OR USE WHATSOEVER OF ALL OR ANY PART THEREOF EXCEPT AS EXPRESSLY AUTHORIZED IN WRITING BY DRAGER Inc.

THESE DRAWINGS ARE FOR CONCEPTUAL USE ONLY. NOT FOR FABRICATION.

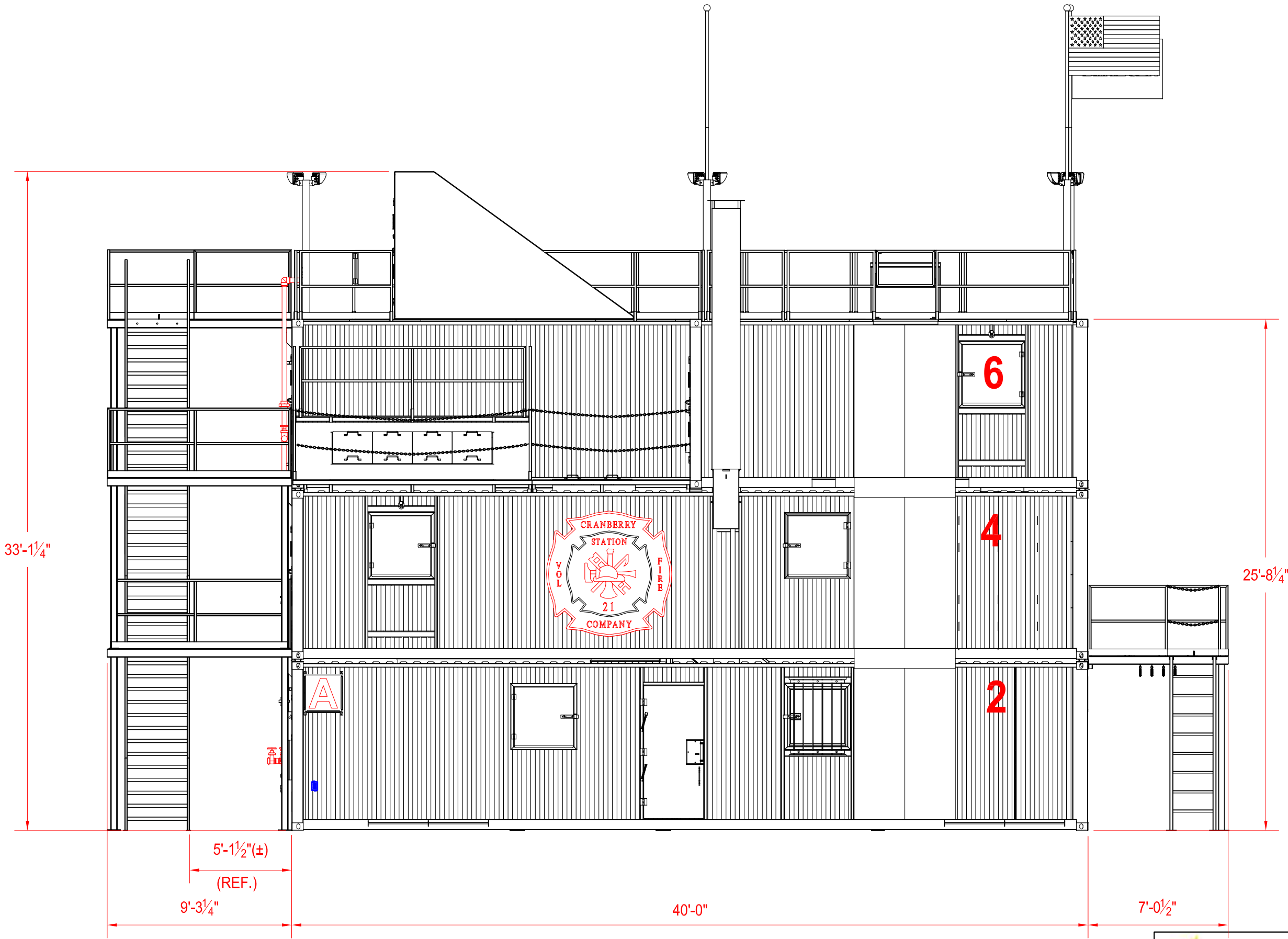
C	02/11/21	REVISED PER CUSTOMER
B	01/05/21	REVISED PER CUSTOMER
REV.#	DATE	DESCRIPTION

**Dräger**

PRODUCT	PHASE II MODIFIED	
CUSTOMER	RICHMOND FIRE ACADEMY	
TITLE	A/D ISO VIEW	
DWG NO.	SHEET 05 OF 21	
DATE	DEC 12, 2020	SCALE NTS
DWN BY	J. HAWLEY	REV. C
PO#	4302279950-00010	



**PROPRIETARY**



**"A" SIDE ELEVATION**

THIS DRAWING AND THE INFORMATION HEREIN CONTAINED ARE THE PROPERTY OF DRAGER Inc. WHICH HAS FURNISHED THEM IN CONFIDENCE UPON THE UNDERSTANDING AND CONDITIONS ALL PERSONS, FIRMS OR CORPORATIONS RECEIVING SUCH DRAWING AND INFORMATION SHALL BY THE ACT OF RECEIVING THEM BE DEEMED TO HAVE AGREED; TO MAKE NO COPY, DUPLICATION, DISCLOSURE OR USE WHATSOEVER OF ALL OR ANY PART THEREOF EXCEPT AS EXPRESSLY AUTHORIZED IN WRITING BY DRAGER Inc.

THESE DRAWINGS ARE FOR CONCEPTUAL USE ONLY. NOT FOR FABRICATION.

C	02/11/21	REVISED PER CUSTOMER
B	01/05/21	REVISED PER CUSTOMER
REV.#	DATE	DESCRIPTION



PRODUCT  
PHASE II MODIFIED

CUSTOMER  
RICHMOND FIRE ACADEMY

TITLE  
A  
SIDE ELEVATION

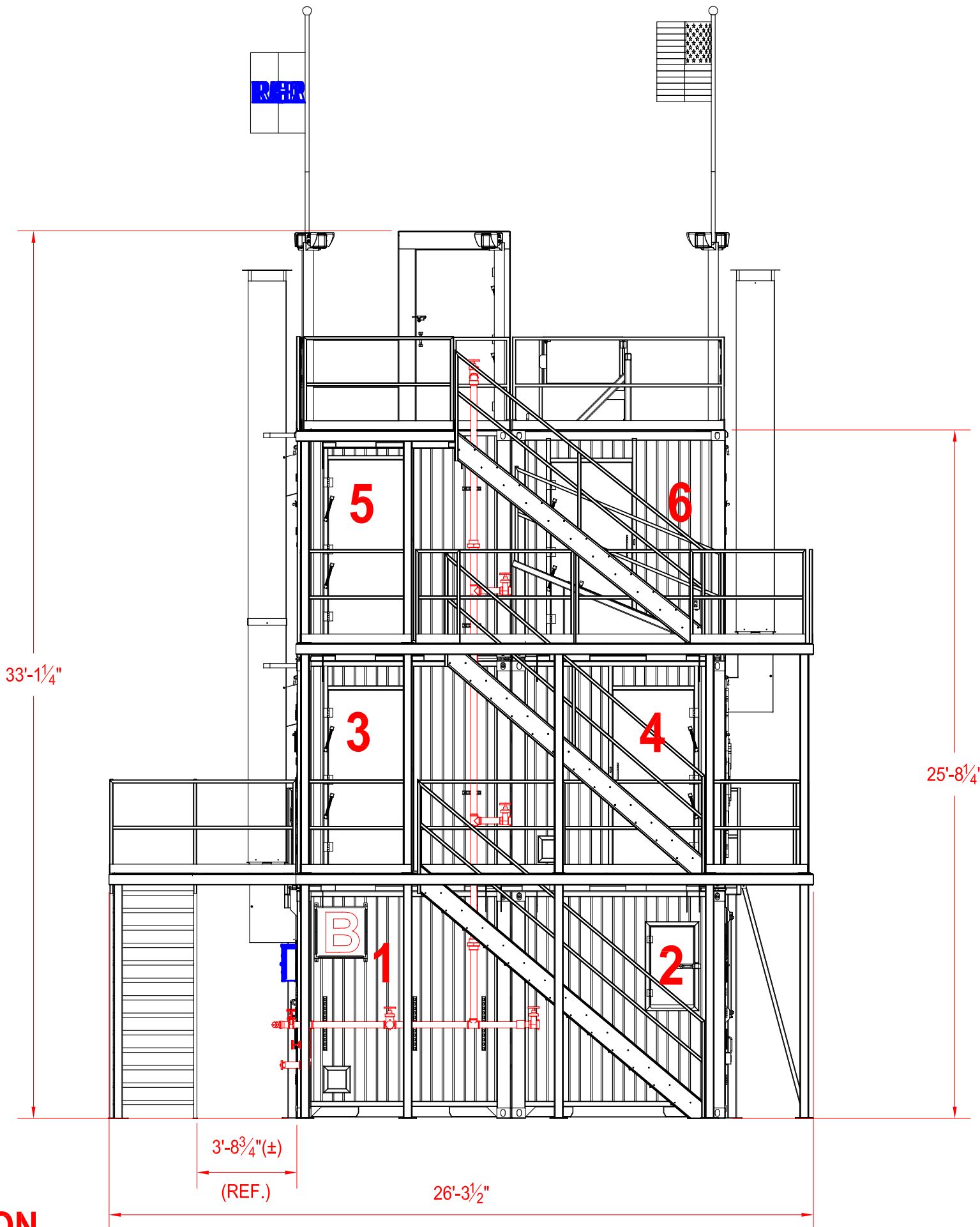
DWG NO.  
SHEET 06 OF 21

DATE DEC 12, 2020 SCALE NTS  
DWN BY J. HAWLEY REV. C

PO# 4302279950-00010



**PROPRIETARY**



**"B" SIDE ELEVATION**

THIS DRAWING AND THE INFORMATION HEREIN CONTAINED ARE THE PROPERTY OF DRAGER Inc. WHICH HAS FURNISHED THEM IN CONFIDENCE UPON THE UNDERSTANDING AND CONDITIONS ALL PERSONS, FIRMS OR CORPORATIONS RECEIVING SUCH DRAWING AND INFORMATION SHALL BY THE ACT OF RECEIVING THEM BE DEEMED TO HAVE AGREED; TO MAKE NO COPY, DUPLICATION, DISCLOSURE OR USE WHATSOEVER OF ALL OR ANY PART THEREOF EXCEPT AS EXPRESSLY AUTHORIZED IN WRITING BY DRAGER Inc.

THESE DRAWINGS ARE FOR CONCEPTUAL USE ONLY. NOT FOR FABRICATION.

REV.#	DATE	DESCRIPTION
C	02/11/21	REVISED PER CUSTOMER
B	01/05/21	REVISED PER CUSTOMER



PRODUCT	PHASE II MODIFIED
CUSTOMER	RICHMOND FIRE ACADEMY
TITLE	B SIDE ELEVATION
DWG NO.	SHEET 07 OF 21

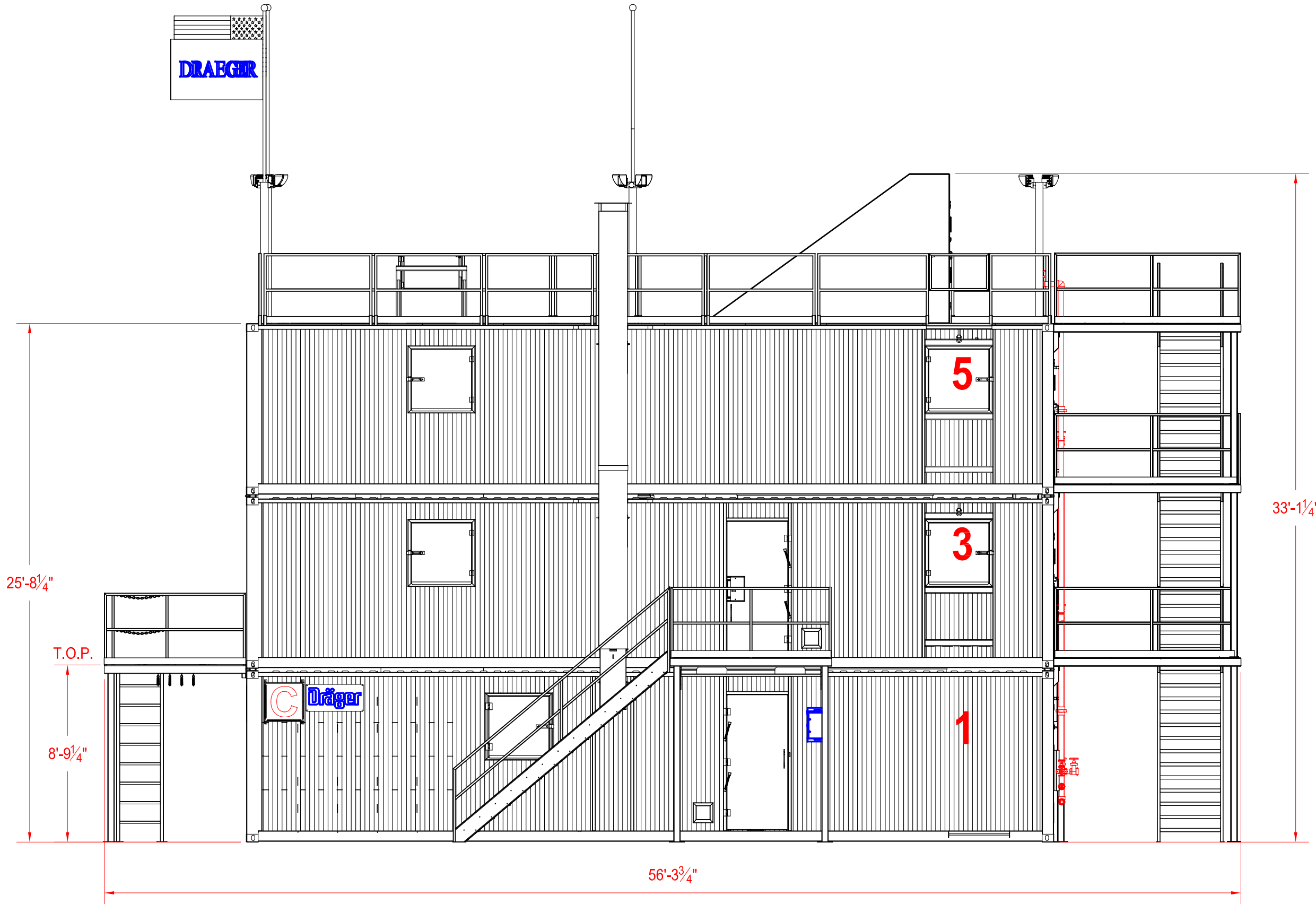


DATE	DEC 12, 2020	SCALE	NTS
DWN BY	J. HAWLEY	REV.	C
PO#	4302279950-00010		

**PROPRIETARY**

THIS DRAWING AND THE INFORMATION HEREIN CONTAINED ARE THE PROPERTY OF DRAGER Inc. WHICH HAS FURNISHED THEM IN CONFIDENCE UPON THE UNDERSTANDING AND CONDITIONS ALL PERSONS, FIRMS OR CORPORATIONS RECEIVING SUCH DRAWING AND INFORMATION SHALL BY THE ACT OF RECEIVING THEM BE DEEMED TO HAVE AGREED; TO MAKE NO COPY, DUPLICATION, DISCLOSURE OR USE WHATSOEVER OF ALL OR ANY PART THEREOF EXCEPT AS EXPRESSLY AUTHORIZED IN WRITING BY DRAGER Inc.

THESE DRAWINGS ARE FOR CONCEPTUAL USE ONLY. NOT FOR FABRICATION.



**"C" SIDE ELEVATION**

C	02/11/21	REVISED PER CUSTOMER
B	01/05/21	REVISED PER CUSTOMER
REV.#	DATE	DESCRIPTION



PRODUCT PHASE II MODIFIED

CUSTOMER RICHMOND FIRE ACADEMY

TITLE C SIDE ELEVATION

DWG NO. SHEET 08 OF 21

DATE DEC 12, 2020 SCALE NTS

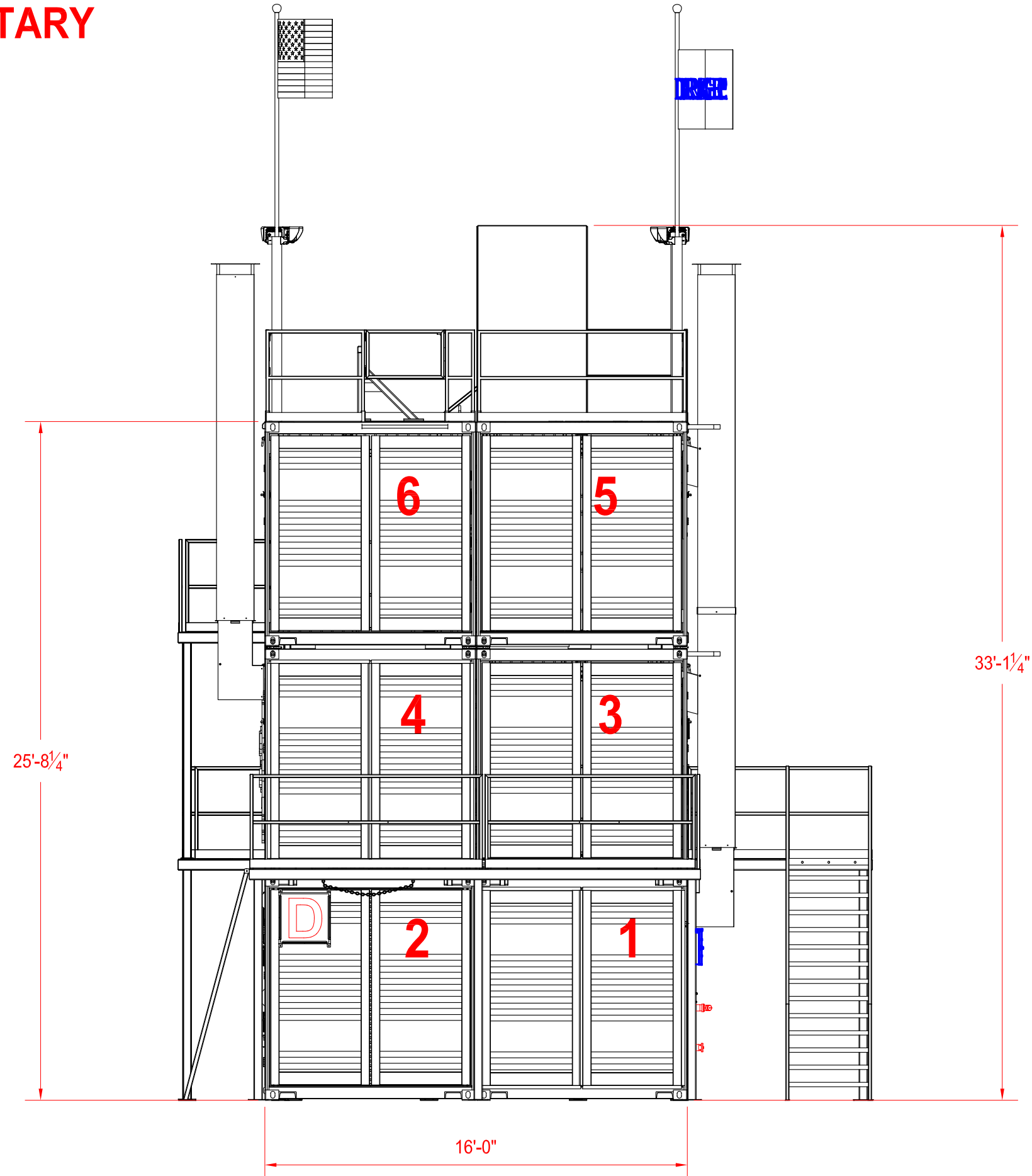
DWN BY J. HAWLEY REV. C

PO# 4302279950-00010





**PROPRIETARY**



**"D" SIDE ELEVATION**

THIS DRAWING AND THE INFORMATION HEREIN CONTAINED ARE THE PROPERTY OF DRAGER Inc. WHICH HAS FURNISHED THEM IN CONFIDENCE UPON THE UNDERSTANDING AND CONDITIONS ALL PERSONS, FIRMS OR CORPORATIONS RECEIVING SUCH DRAWING AND INFORMATION SHALL BY THE ACT OF RECEIVING THEM BE DEEMED TO HAVE AGREED; TO MAKE NO COPY, DUPLICATION, DISCLOSURE OR USE WHATSOEVER OF ALL OR ANY PART THEREOF EXCEPT AS EXPRESSLY AUTHORIZED IN WRITING BY DRAGER Inc.

THESE DRAWINGS ARE FOR CONCEPTUAL USE ONLY. NOT FOR FABRICATION.

REV.#	DATE	DESCRIPTION
C	02/11/21	REVISED PER CUSTOMER
B	01/05/21	REVISED PER CUSTOMER



PRODUCT PHASE II MODIFIED

CUSTOMER RICHMOND FIRE ACADEMY

TITLE D SIDE ELEVATION

DWG NO. SHEET 09 OF 21

DATE	DEC 12, 2020	SCALE	NTS
DWN BY	J. HAWLEY	REV.	C

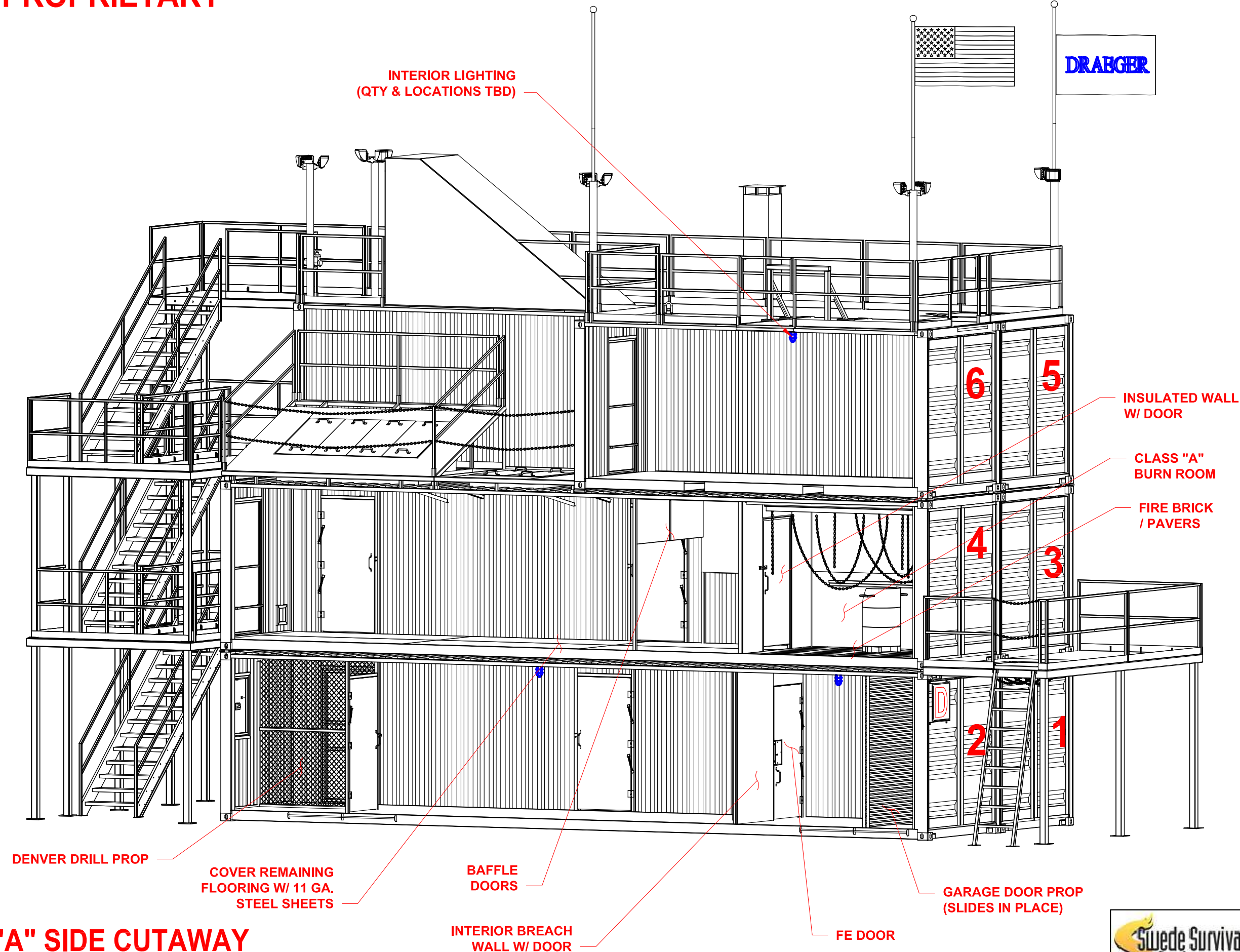
PO# 4302279950-00010



**PROPRIETARY**

THIS DRAWING AND THE INFORMATION HEREIN CONTAINED ARE THE PROPERTY OF DRAGER Inc. WHICH HAS FURNISHED THEM IN CONFIDENCE UPON THE UNDERSTANDING AND CONDITIONS ALL PERSONS, FIRMS OR CORPORATIONS RECEIVING SUCH DRAWING AND INFORMATION SHALL BY THE ACT OF RECEIVING THEM BE DEEMED TO HAVE AGREED; TO MAKE NO COPY, DUPLICATION, DISCLOSURE OR USE WHATSOEVER OF ALL OR ANY PART THEREOF EXCEPT AS EXPRESSLY AUTHORIZED IN WRITING BY DRAGER Inc.

THESE DRAWINGS ARE FOR CONCEPTUAL USE ONLY. NOT FOR FABRICATION.



**"A" SIDE CUTAWAY**

C	02/11/21	REVISED PER CUSTOMER
B	01/05/21	REVISED PER CUSTOMER
REV.#	DATE	DESCRIPTION



PRODUCT PHASE II MODIFIED

CUSTOMER RICHMOND FIRE ACADEMY

TITLE A SIDE CUTAWAY

DWG NO. SHEET 10 OF 21

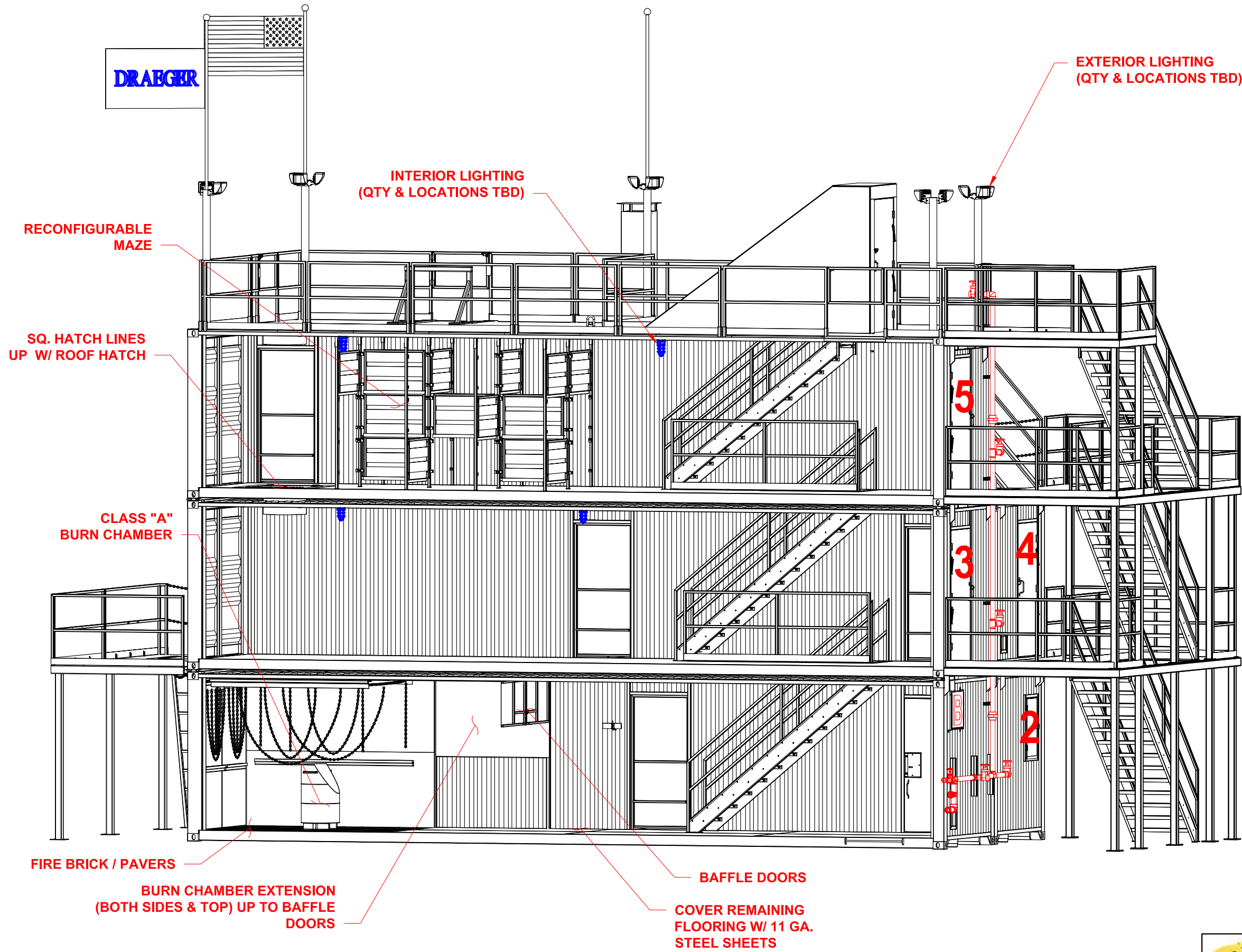
DATE DEC 12, 2020 SCALE NTS

DWN BY J. HAWLEY REV. C

PO# 4302279950-00010



**PROPRIETARY**



**"C" SIDE CUTAWAY**

THIS DRAWING AND THE INFORMATION HEREIN CONTAINED ARE THE PROPERTY OF DRÄGER Inc. WHICH HAS FURNISHED THEM IN CONFIDENCE UPON THE UNDERSTANDING AND CONDITIONS ALL PERSONS, FIRMS OR CORPORATIONS RECEIVING SUCH DRAWING AND INFORMATION SHALL BY THE ACT OF RECEIVING THEM BE DEEMED TO HAVE AGREED; TO MAKE NO COPY, DUPLICATION, DISCLOSURE OR USE WHATSOEVER OF ALL OR ANY PART THEREOF EXCEPT AS EXPRESSLY AUTHORIZED IN WRITING BY DRÄGER Inc.

THESE DRAWINGS ARE FOR CONCEPTUAL USE ONLY. NOT FOR FABRICATION.

C	02/11/21	REVISED PER CUSTOMER
B	01/05/21	REVISED PER CUSTOMER
REV.#	DATE	DESCRIPTION



PRODUCT PHASE II MODIFIED

CUSTOMER RICHMOND FIRE ACADEMY

TITLE C SIDE CUTAWAY

DWG NO. SHEET 11 OF 21

DATE DEC 12, 2020 SCALE NTS

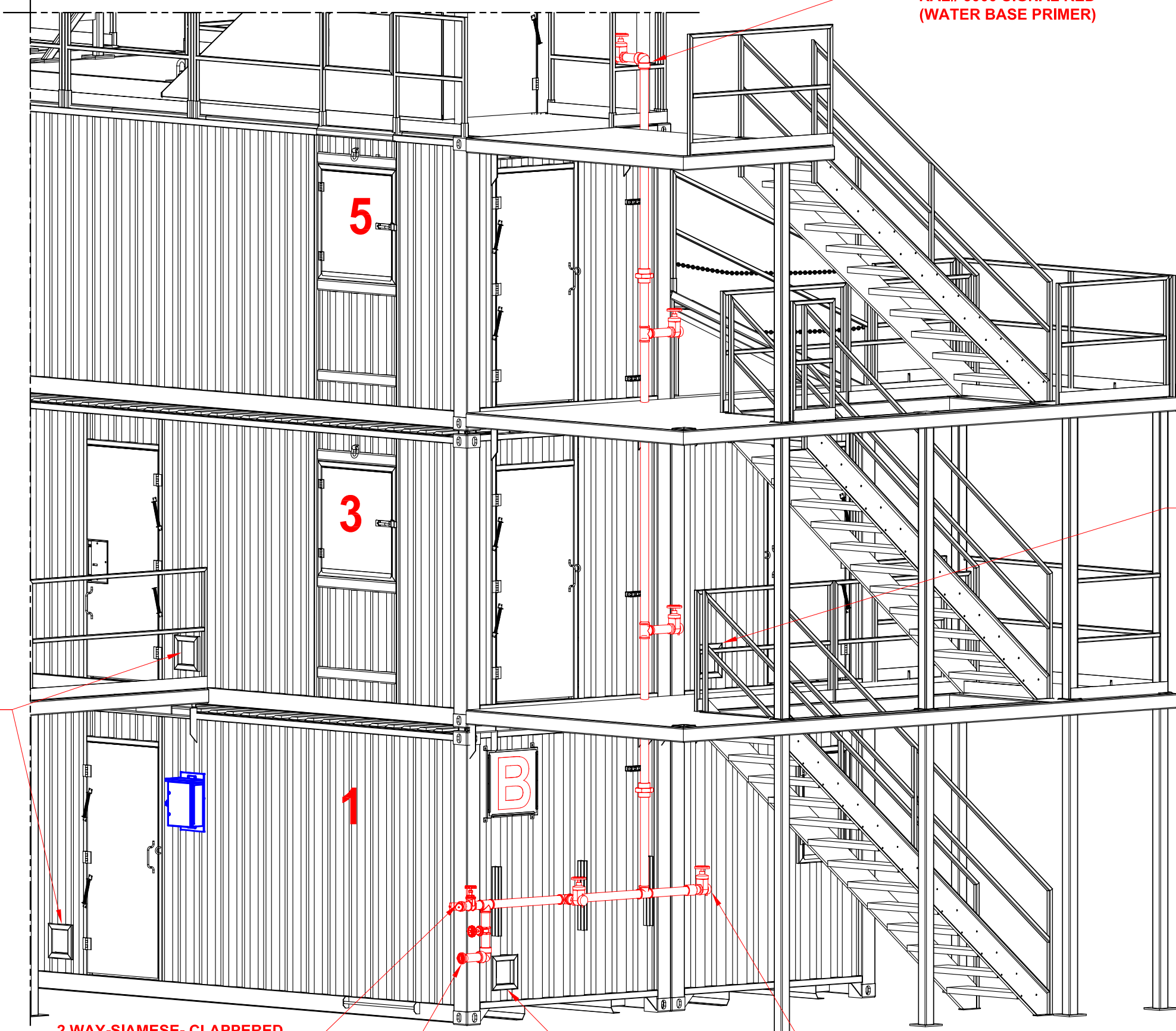
DWN BY J. HAWLEY REV.

PO# 4302279950-00010



**PROPRIETARY**

**STANDPIPE PAINTED  
RAL# 3000 SIGNAL RED  
(WATER BASE PRIMER)**



**HOSE ACCESS**

**HOSE ACCESS**

**2 WAY-SIAMESE- CLAPPERED  
2.5" FEMALE NH**

**5" STORZ x  
2.5" FEMALE NH**

**DIXON VALVE #WDGV251F  
2.5" FNPT IN / 2.5" MALE  
NST OUT INCLUDES PIN  
LUG CAP  
(5 PLACES)**

**HOSE ACCESS**

**STANDPIPE**

THIS DRAWING AND THE INFORMATION HEREIN CONTAINED ARE THE PROPERTY OF DRAGER Inc. WHICH HAS FURNISHED THEM IN CONFIDENCE UPON THE UNDERSTANDING AND CONDITIONS ALL PERSONS, FIRMS OR CORPORATIONS RECEIVING SUCH DRAWING AND INFORMATION SHALL BY THE ACT OF RECEIVING THEM BE DEEMED TO HAVE AGREED; TO MAKE NO COPY, DUPLICATION, DISCLOSURE OR USE WHATSOEVER OF ALL OR ANY PART THEREOF EXCEPT AS EXPRESSLY AUTHORIZED IN WRITING BY DRAGER Inc.

THESE DRAWINGS ARE FOR CONCEPTUAL USE ONLY. NOT FOR FABRICATION.

**GENERAL NOTES**

ROUTING AND PARTS SHOWN AS GENERAL GUIDELINES. FINAL ARRANGEMENT AND DESIGN SHALL BE APPROVED BY THE CUSTOMER.

C	02/11/21	REVISED PER CUSTOMER
B	01/05/21	REVISED PER CUSTOMER
REV.#	DATE	DESCRIPTION



PRODUCT  
**PHASE II MODIFIED**

CUSTOMER  
**RICHMOND FIRE ACADEMY**

TITLE  
**STANDPIPE**

DWG NO.  
**SHEET 20 OF 21**

DATE DEC 12, 2020 SCALE NTS

DWN BY J. HAWLEY REV. C

PO# 4302279950-00010

