



Commission of Architectural Review SUBMISSION APPLICATION

City of Richmond, Room 510 – City Hall
900 East Broad Street, Richmond, Virginia 23219
PHONE: (804) 646-6335 FAX: (804) 646-5789

12 COPIES OF SUPPORTING DOCUMENTATION ARE REQUIRED FOR PROCESSING YOUR SUBMISSION

LOCATION OF WORK: 2401 E Marshall St; 313 N 24th St DATE: 6/26/15

OWNER'S NAME: Sterling Bilder TEL NO.: 804.306.5018

AND ADDRESS: 17 S Belmont Ave EMAIL: josh.bilder@gmail.

CITY, STATE AND ZIPCODE: Richmond, VA 23221

ARCHITECT/CONTRACTOR'S NAME: LGA c/o S Quinn TEL. NO.: 917.547.0634

AND ADDRESS: 81 Vanderbilt Ave EMAIL: sgquinn@mac.cor

CITY, STATE AND ZIPCODE: Brooklyn, NY, 11205

Would you like to receive your staff report via email? Yes No

REQUEST FOR CONCEPTUAL REVIEW

I hereby request Conceptual Review under the provisions of Chapter 114, Article IX, Division 4, Section 114-930.6(d) of the Richmond City Code for the proposal outlined below in accordance with materials accompanying this application. I understand that conceptual review is advisory only.

APPLICATION FOR CERTIFICATE OF APPROPRIATENESS

I hereby make application for the issuance of a certificate under the provisions of Chapter 114, Article IX, Division 4 (Old and Historic Districts) of the Richmond City Code for the proposal outlined below in accordance with plans and specifications accompanying this application.

DETAILED DESCRIPTION OF PROPOSED WORK (Required):

STATE HOW THE DESIGN REVIEW GUIDELINES INFORM THE DESIGN OF THE WORK PROPOSED. (Include additional sheets of description if necessary, and **12 copies** of artwork helpful in describing the project. The 12 copies are not required if the project is being reviewed for an administrative approval. See *instruction sheet for requirements.*)

Signature of Owner or Authorized Agent: X *Joshua Bilder*

Name of Owner or Authorized Agent (please print legibly): Joshua Bilder

(Space below for staff use only)

Received by Commission Secretary

APPLICATION NO. _____

DATE _____

SCHEDULED FOR _____

Note: CAR reviews all applications on a case-by-case basis.

Rapid Dry-set

PRL's innovative dry-set system offers.

- Shoe Base 30% Lighter
- Removable Aluminum Covers in Mill & Anodized Finishes
- Optional Clad Fascia & Painted Finishes
- Stock Length Sizes 10' & 20' Custom Sizes Available
- Fast & Easy Installation
- Reduced Labor Cost
- No Additional / Special Tool Required
- Plumb Adjustment Up To 5/8" (Vertically) - 5/8" (Right Side)

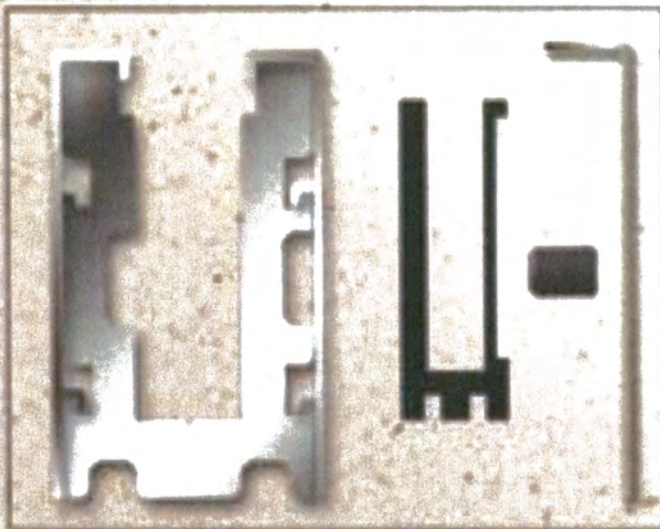
We extrude our own HR base and offer complete systems with glass.



PL-TC
2" Top Cap



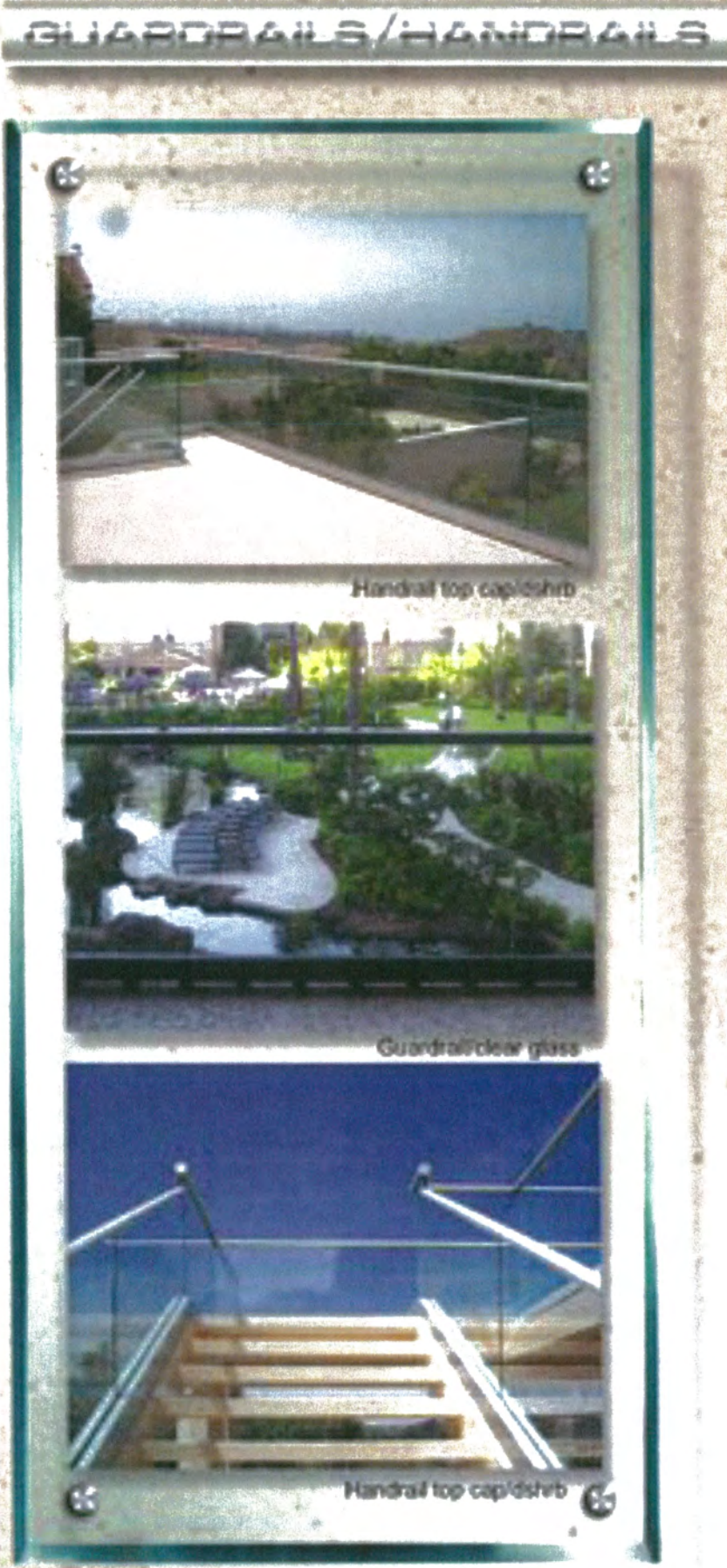
PL-TVI
Vinyl Insert



PL-DSHRB
2 1/2" x 4 1/2"

PL-PG
Glass Panel
Clip Mount

PL-CC
Clad Cover
(Optional)



GUARDRAILS/HANDRAILS

Handrail top cap/dshrb

Guardrail/clear glass

Handrail top cap/dshrb

PRL SYSTEMS

[Download CAD Details](#)

[Keep me informed](#)

- [Resources](#)
- [Products](#)
- [Why Hardie](#)
- [Photo & Video Gallery](#)
- [Contact Us](#)



HardieDesign
CONTEST
Congratulations
to our winners!
[View 2014 Winners](#)

HardieTrim® Boards [Home](#) / [Products](#) / HardieTrim Boards

Only HardieTrim® boards can provide the final, ultimate finishing touch to any commercial project using James Hardie® fiber-cement products. HardieTrim boards create deep shadow lines and wider reveals, as well as durability in corners, columns and windows that is unmatched.

Your zip code is: 11205 Change your location:



The HardieZone products shown below are suited for your local climate. Enter a new ZIP Code above to change locations.
[View all products](#) / [Learn more.](#)

Batten Boards Rustic Grain

COLOR PALETTE: Timber Bark



Thickness: 3/4"	
Weight: 5.43lbs./sq. ft.	
Length: 12.00'	
WIDTHS	2.500"
EXPOSURE	2.50"
COLORPLUS®	•
PRIMED	•

Batten Boards Smooth



[View Product & Project Photo Gallery](#)

Product Features & Information

- [Brochures](#)
- [ColorPlus® Technology](#)
- [The HardieZone® System](#)
- [Sustainability](#)

5/4 HardieTrim® NT3™ Boards Smooth

COLOR PALETTE:



Thickness: 4/4"					
Weight: 6.17lbs./sq. ft.					
Length: 12.00'					
WIDTHS	3.500"	4.500"	5.500"	7.250"	11.250"
EXPOSURE	3.50"	4.50"	5.50"	7.25"	11.25"
COLORPLUS®	•	•	•	•	•


HardiePanel® Rainscreen Quick Reference

View the new Rainscreen Quick Reference for Multifamily and Commercial Traditional Panel Applications.

[View PDF file](#)

News & Updates

Update: Revisions to Tech Bulletin 19 Technical Bulletin 19-Applying James Hardie siding over Continuous Insulation and Non-Nailable substrates has been updated.

 [View the latest version.](#)

Featured Article

The Construction Specifier Magazine
Designing With Fiber Cement



Weather Resistant
Siding

[View Article](#)

HardieTrim®

HardieTrim® Boards Products Description

HARDIETRIM® 5/4 BOARDS

HardieTrim 5/4 boards is a decorative non-load bearing trim product. HardieTrim 5/4 boards is 1-in. thick and comes in 10-ft. and 12-ft. lengths, based on product availability. In addition to frieze, fascia, rake, window, door, and corner details, HardieTrim 5/4 boards may be used to construct light blocks, column wraps and decorative scroll work. Available in commonly-used nominal widths from 4 in. to 12 in., HardieTrim 5/4 boards comes finished with either with the PrimePlus® factory primer and sealer or with ColorPlus® Technology. The ColorPlus coating is a factory-applied, oven-baked finish available on a variety of James Hardie® siding and trim products. See your local dealer for details and availability of products, colors and accessories.

HARDIETRIM® 4/4 BOARDS

HardieTrim 4/4 boards is a decorative non-load bearing trim product. HardieTrim 4/4 boards is 3/4-in. thick and comes in 10-ft and 12-ft. lengths. HardieTrim 4/4 boards may be used for frieze, fascia, rake, window, door, and corner details where the look of a 3/4-in. product is desired. HardieTrim 4/4 boards is available in commonly-used nominal widths from 4 in. to 12 in. See your local dealer for details and availability of products and accessories.

HARDIETRIM® BATTENS

HardieTrim Battens are a decorative, non-load bearing trim product. HardieTrim Battens are 3/4 in. thick, 2-1/2 in. wide, and come in 12' lengths. See your local dealer for details and availability of product colors and accessories.



Smooth
HardieTrim 5/4, 4/4 Boards



Rustic
HardieTrim 5/4, 4/4 Boards



Left: HardieTrim Batten board – Smooth with HardiePanel® Vertical Siding for Board & Batten look.
Below: A Complete James Hardie Exterior – Close-up on trim products.



HardieTrim Batten board - Rustic and smooth



ColorPlus TIP: HardieTrim 4/4, 5/4 boards with ColorPlus Technology is shipped with a protective laminate slip sheet. James Hardie recommends keeping the protective sheet in place during cutting and fastening to reduce damage to the boards. Remove the protective sheet only after installing the boards and filling the nail holes with a colored touch-up pen.



WARNING

DO NOT caulk nail heads when using ColorPlus products. Refer to the ColorPlus touch-up section

James Hardie® ColorPlus® Technology Siding Products

artisan
JamesHardie

ARTISAN® LAP SIDING

Not currently available in Canada

Thickness: 5/8"
Length: 12' planks

Smooth
Widths: 5.25" (4" exp.)
7.25" (6" exp.)
8.25" (7" exp.)



Smooth in Mountain Sage

HardiePlank®

HARDIEPLANK® LAP SIDING

Thickness: 5/16"
Length: 12' planks

Select Cedarmill®
Widths: 5.25" (4" exp.)**,
6.25" (5" exp.),
7.25" (6" exp.),
8.25" (7" exp.)

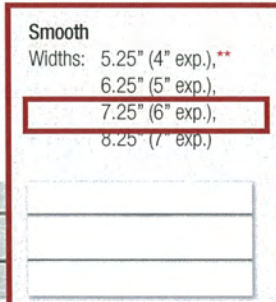
Smooth
Widths: 5.25" (4" exp.)**,
6.25" (5" exp.),
7.25" (6" exp.),
8.25" (7" exp.)

Beaded Cedarmill®
Width: 8.25" (7" exp.)

Beaded Smooth
Width: 8.25" (7" exp.)



Cobble Stone



Arctic White



Sandstone Beige



Autumn Tan

HardiePanel®

HARDIEPANEL® VERTICAL SIDING

Thickness: 5/16"

Sierra 8
Sizes: 4' x 8' and 4' x 10'



Boothbay Blue

Stucco
Sizes: 4' x 8' and 4' x 10'



Autumn Tan

Cedarmill®
Sizes: 4' x 8' and 4' x 10'



Woodstock Brown

Smooth
Sizes: 4' x 8' and 4' x 10'



Countrylane Red

HardieShingle®

HARDIESHINGLE® SIDING

Thickness: 1/4"

Straight Edge Panel
Width: 48"
Height: 15.25" (7" exp.)
14" (5" exp.)**



Khaki Brown

Staggered Edge Panel
Width: 48"
Height: 15.875" (6" exp.)



Monterey Taupe

Individual Shingles
Sizes: 4.2", 5.5", 6.75", 7.25",
10" x 15.25" (7" exp.)**
3.5", 4.5", 5.5", 7",
8.75" x 14" (5" exp.)**



Evening Blue

FEATURES

- Economical
- 1-3/4" sight line with a 3-9/16", 4-1/2" or 6" depth
- Front or Center (4-1/2") glass applications
- Outside glazed
- Screw Spline, Shear Block or Type-B fabrication
- SSG option
- Infill options up to 1-1/8"
- Thermal break via. Polymer glazing clip
- Permanodic™ anodized finishes in seven standard choices
- Painted finishes in standard and custom choices

OPTIONAL FEATURES

- Two color capability
- 1-1/4" perimeter sight line
- Project specific U-factors (See Thermal Charts)

PRODUCT APPLICATIONS

- Storefront, Ribbon Window or Punched Openings
- Low to mid-rise
- Single-span
- Curved frames
- Integrated entrance framing allowing Kawneer entrances or other specialty entrances to be included
- Kawneer windows or GLASSvent™ for storefront are easily incorporated

For specific product applications,
consult your Kawneer Representative

Laws and building and safety codes governing the design and use of glazed entrance, window, and curtain wall products vary widely. Kawneer does not control the selection of product configurations, operating hardware, or glazing materials.

Kawneer reserves the right to change configuration without prior notice when deemed necessary for product improvement.

entrance, window, and curtain wall products vary widely. Kawneer does not control the selection of product configurations, operating hardware, or glazing materials, and assumes no responsibility therefor.

PICTORIAL VIEWS..... 5-8

BASIC FRAMING DETAILS..... 9-20

MISCELLANEOUS FRAMING..... 21,22

GLAZING CHART..... 22

GLASSvent™ FOR STOREFRONT..... 23,24

VENTS..... 25

ENTRANCE FRAMING..... 26-32

WINDLOAD/DEADLOAD CHARTS..... 33-41

DEADLOAD CHARTS..... 42-46

THERMAL CHARTS..... 47-51

GLAZING CLIP CHART..... 52

LAWS AND BUILDING AND SAFETY CODES GOVERNING THE DESIGN AND USE OF GLAZED ENTRANCE, WINDOW, AND CURTAIN WALL PRODUCTS VARY WIDELY. KAWNEER DOES NOT CONTROL THE SELECTION OF PRODUCT CONFIGURATIONS, OPERATING HARDWARE, OR GLAZING MATERIALS, AND ASSUMES NO RESPONSIBILITY THEREFOR.

Metric (SI) conversion figures are included throughout these details for reference. Numbers in parentheses () are millimeters unless otherwise noted.

The following metric (SI) units are found in these details:

- m – meter
- cm – centimeter
- mm – millimeter
- s – second
- Pa – pascal
- MPa – megapascal

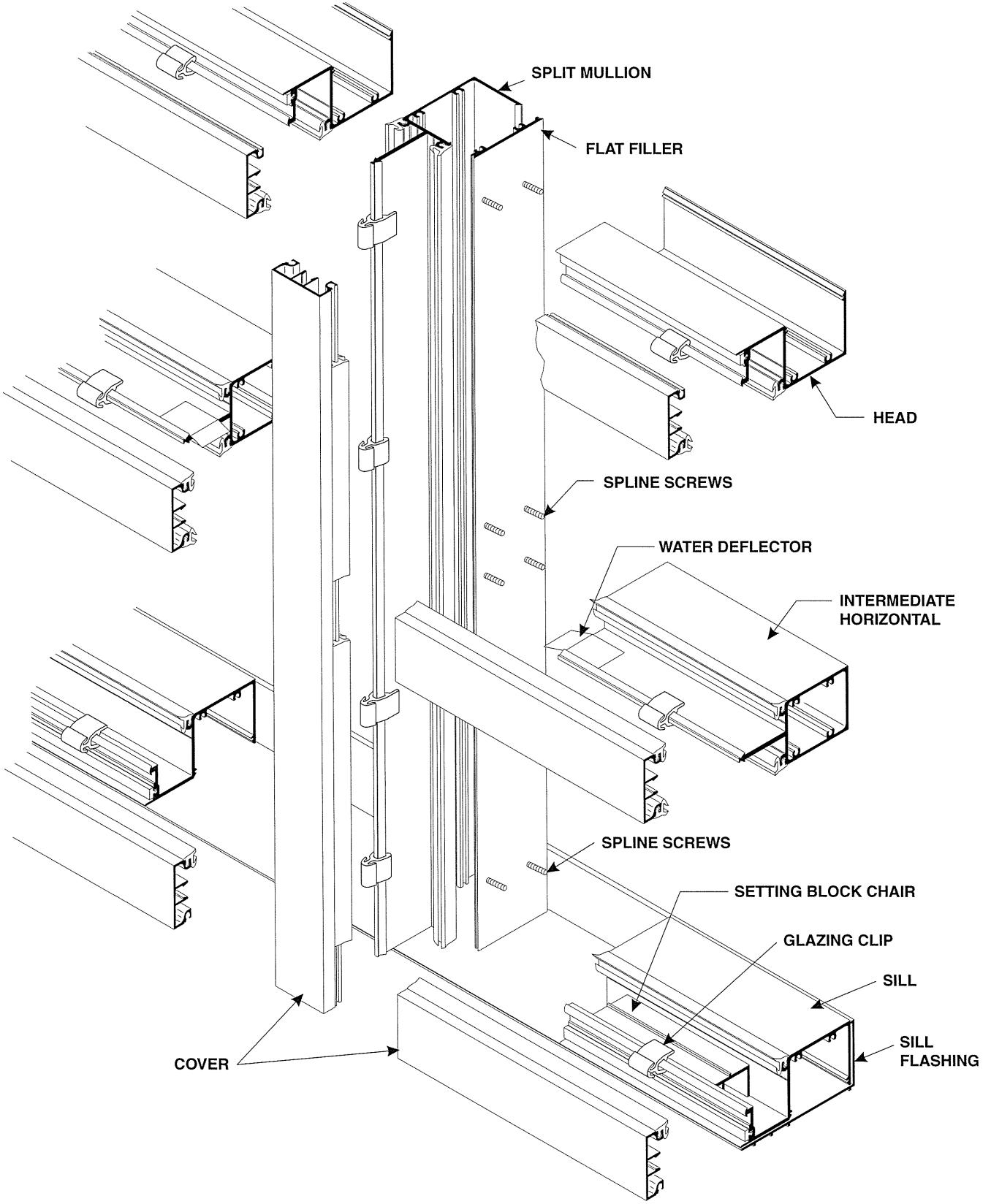
Kawneer reserves the right to change configurations without prior notice when deemed necessary for product improvement.

necessary for product improvement.

© Kawneer Company, Inc., 2014

Laws and building and safety codes governing the design and use of glazed entrance, window, and curtain wall products vary widely. Kawneer does not control the selection of product configurations, operating hardware, or glazing materials.

Kawneer reserves the right to change configuration without prior notice when deemed necessary for product improvement.



entrance, window, and curtain wall products vary widely. Kawneer does not control the selection or product configurations, operating hardware, or glazing materials, and assumes no responsibility therefor.

necessary for product improvement.
© Kawneer Company, Inc., 2014

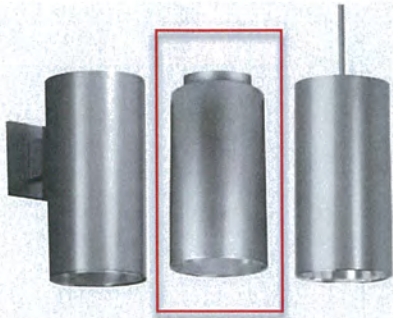
LCC6LED

LiteForms®

6" LED Cylinder

120V-277V 1000-1800 Lumens

LITEFORMS



FEATURES

- Light Engine utilizes Nichia LEDs for a 3 SCDM color consistency fixture to fixture
- 1000-1800 Lumens delivered
- Glare free optical control
- Suitable for wet locations - Wall mount suitable for wet location. Surface and Pendant suitable for wet location under canopy/covered ceilings only. Cord mount suitable for damp locations.
- Minimum 50,000 hours at 70% lumen maintenance
- LED cylinder with 0-10V dimming standard
- Photometrics tested per IESNA-LM-79-2008 standards.
- Luminaires are certified by a National Recognized Testing Lab (NRTL), either UL or CSA

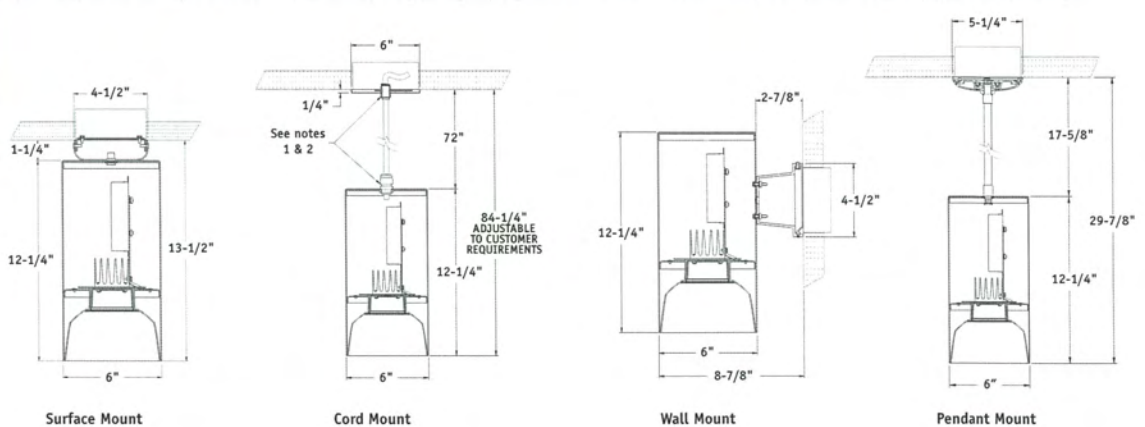
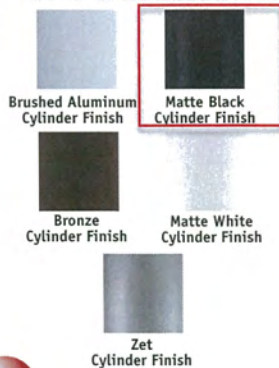
ORDERING INFORMATION

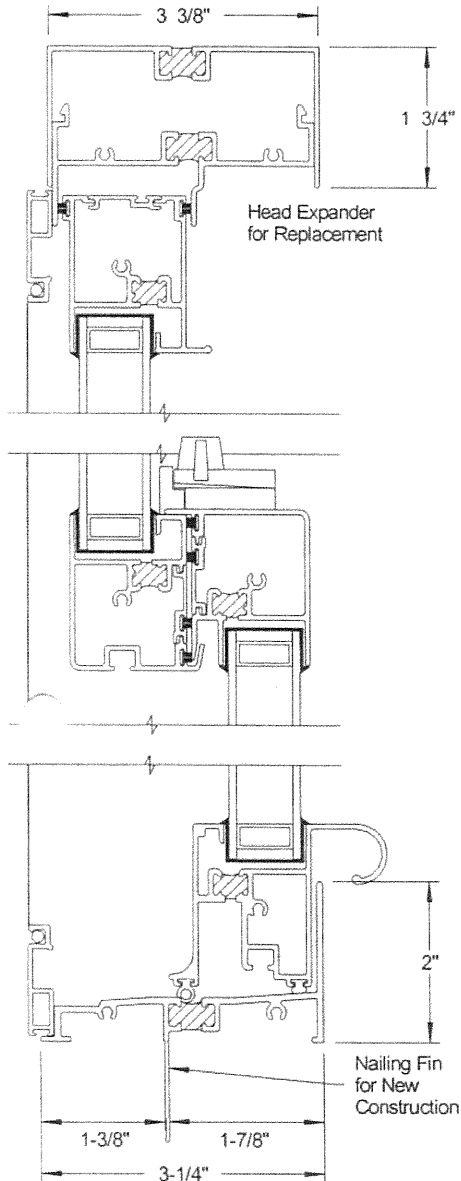
EXAMPLE: LCC6LEDP18L35K8WFL45 BL

LCC6LED	P	18L	35K	8			WFL45			BL
HOUSING LCC6LED 6" LED Cylinder		LED COLOR TEMP 27K 2700 Kelvin 30K 3000 Kelvin 35K 3500 Kelvin 40K 4000 Kelvin 50K 5000 Kelvin		CRI 8 80+ CRI		OPTIONS Blank Standard 0-10V dimming to 10% EDM ³ Lutron EcoSystem to 1% 2DM Lutron 2 Wire Leading Edge Dimming to 1% (120V only) DM1 Osram dimming to 1% 0-10V	BEAM WFL45 Nominal 45 Degree Cutoff	REFLECTOR FINISH Blank Clear Alzak, Semi-Diffuse	REFLECTOR COLOR BC Painted Black Cone WC Painted White Cone	CYLINDER COLOR BA Brushed Aluminum BZ Bronze BL Matte Black WH Matte White Z Zet
MOUNTING P Pendant S Surface CM ^{1,2} Cord Mount W Wall Mount		OUTPUT 10L 1000 Delivered Lumens 14L 1400 Delivered Lumens 18L 1800 Delivered Lumens		VOLTAGE Blank 120V-277V 120V 120 Volt (for 2DM)						

NOTES

- ¹ Cord length 6 feet, clear sleeve
- ² Plastic bushings are grey on white, brushed aluminum and zet cylinder; black on black and bronze
- ³ Consult factory for 3-wire dimming option





Commercial Aluminum Double Hung H-C45

Standard Features

- 3-1/4" Frame Depth
- T-6063 Aluminum Extrusions with .062" walls
- Thermally Broken Frame and Sash
- Factory Glazed with 7/8" Insulated Glass with Super Spacer[®] warm edge spacer technology for superior thermal performance.
- Zinc die-cast Cam Locks, 2 locks standard over 24" in width
- Replacement or New Construction Frames
- Finseal Weatherseals on both sashes with two rubber bulbs at the frame sill, and four weatherstrips at the interlock.
- Both sashes tilt in for easy cleaning if desired.
- Architectural paint finish meets AAMA 2603. Colors available for normal lead times: White, Bronze, and Tan. For large projects, custom colors are available on a special order basis – please contact our office for details.
- Concealed Spiral Balances for quiet, low-friction operation. Commercial Heavy Duty Balances are available for most large size windows.
- Strong Extruded Aluminum bottom lift rail
- Available with nail fin for new construction or without nail fin for replacement applications.
- Sill Angle for sloped sill replacement applications and Head Expanders are available.

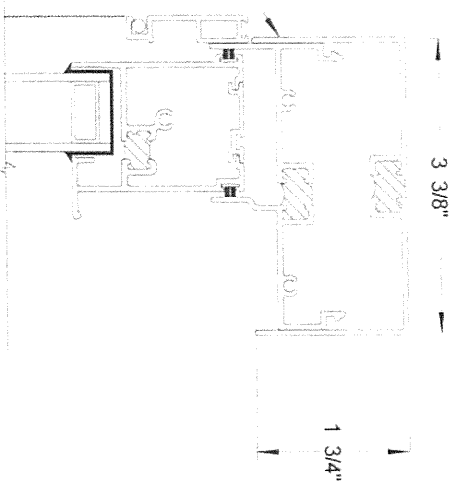
Optional Features

- Extruded Aluminum Full or Half Screen for long service life
- Numerous high performance glazing options
- Mullion for multiple units
- Many Grid Between Glass (GBG) configurations are available for greater design flexibility and low maintenance.
- Extruded Aluminum Muntin to divide top sash is especially useful for concealing drop type ceilings.

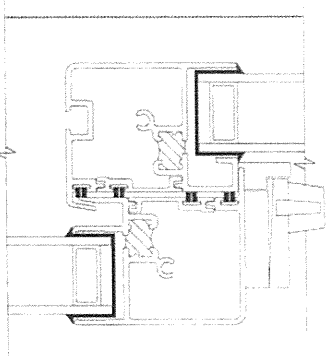
The West-Prime Thermal Double Hung window is ideally suited for commercial use. Designed to handle the demanding requirements of commercial quality windows, the West-Prime Thermal maintains a pleasing, easy-to-operate residential look and feel. The West-Prime Commercial Aluminum Series, consisting of Double Hung and Fixed windows, are a perfect complement to the Westco Commercial Aluminum Series, both of which can be custom manufactured to your specifications, delivered in a timely manner, and can help make your project a complete success.

Head Expander

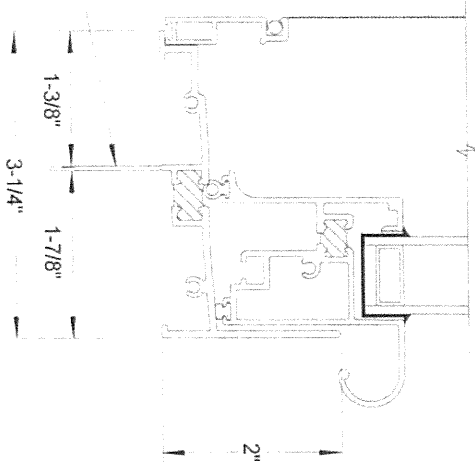
1



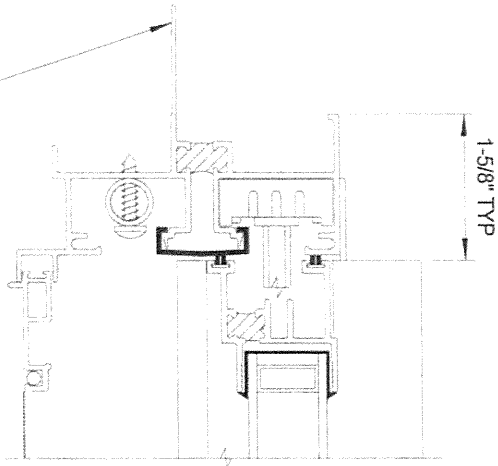
2



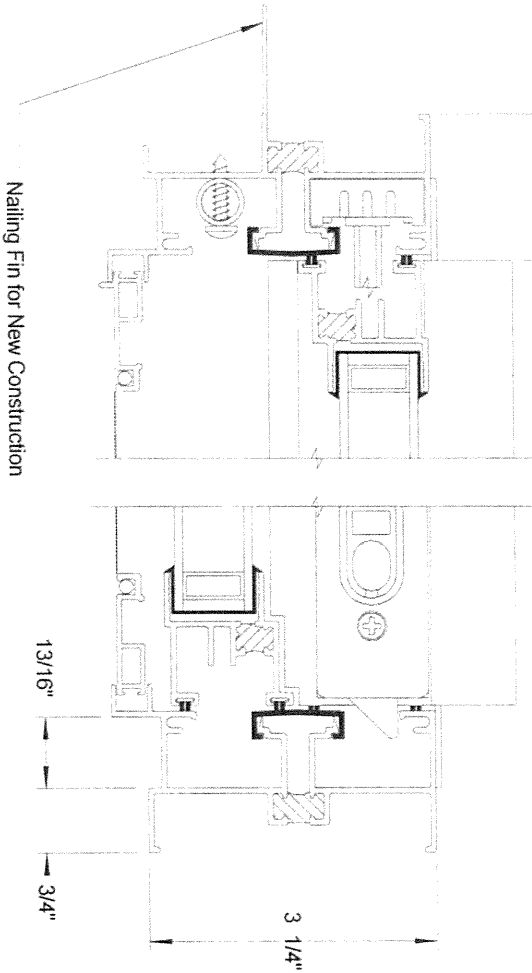
3



4



5



Nailing Fin for New Construction

4

3

2

1

5

West Window Corporation

Industrial Park
Martinsville, Virginia

P.O. Drawer 3071
(276)638-2394

West-Prime Thermal Double Hung H-C45

Head, Jamb, and Sill Detail

7-28-10

Scale: Half

Drawn: DB

Sheet: 1 of 3



VICINITY PLAN

KEY NOTES:

1. EXISTING TREES TO REMAIN.
2. ALL HVAC UNITS ON ROOF - NOT VISIBLE FROM PUBLIC VIEW
3. WOOD TRASH ENCLOSURE - NOT VISIBLE FROM PUBLIC VIEW

STERLING BILDER CHURCH HILL PROJECTS- 24th STREET GARAGE AND TOWNHOUSES DEVELOPMENT AREAS

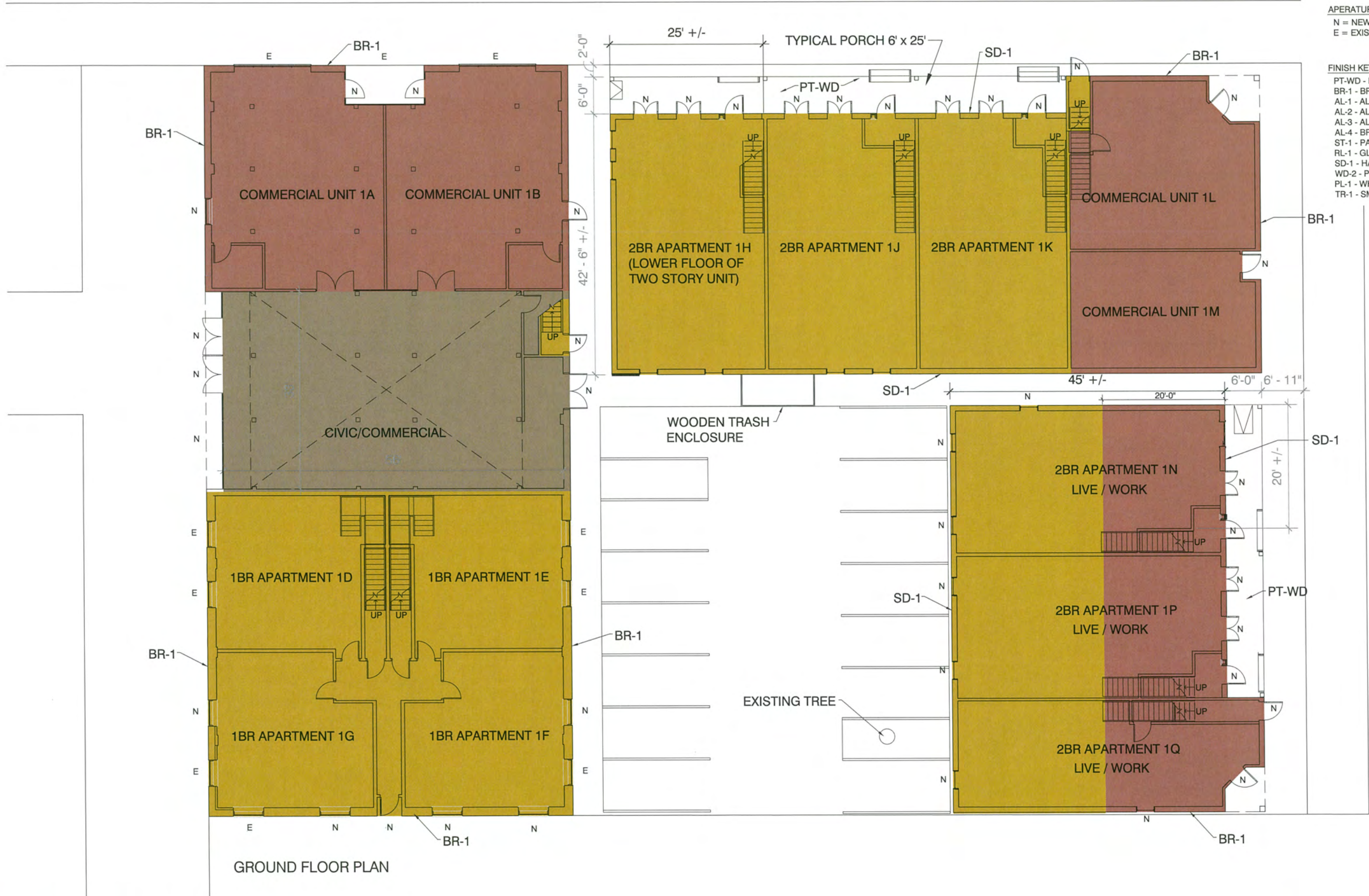
Nolde Garage + Townhouses	
Lot Area	21761
Parking Area	4870
Hardscape	8452
Built Footprint	13653
Built Area: Existing	9365
Built Area: New	12882
Total Built Area	23874
Commercial Area	6168
Patrick Henry Hall	1810
Residential Area	17706
Com/Res Ratio	
Parking Count	14 (inc 1 HC)

*2nd Fl Excluded

RESIDENTIAL AREAS, UNIT COUNTS

Nolde Garage + Townhouses	
Total Res. Area	17706
Total Common Area	175
Total Leaseable Area	17531
Unit Count	19
Live work/ Ave Res. Area	3 588
1 BR	6
2 BR Count	9
3 BR Count	1
Acres	0.45
Unit Density/Acre	42

BUILDING	PORCH HEIGHT	PARAPET HEIGHT
A	-	32' - 0"
B	18"	24' - 0"
C	14"	24' - 0"
D	22"	26' - 4"
E	3' - 0" / 22"	27' - 2"
F	5' - 4"	25' - 3"
G	-	26' - 6"
H	2' - 7"	26' - 6"
I	-	17' - 10" (@ GARAGE DR)
J	-	27' - 0"
K	-	20' - 8"
L	28" MAX	25' - 2"

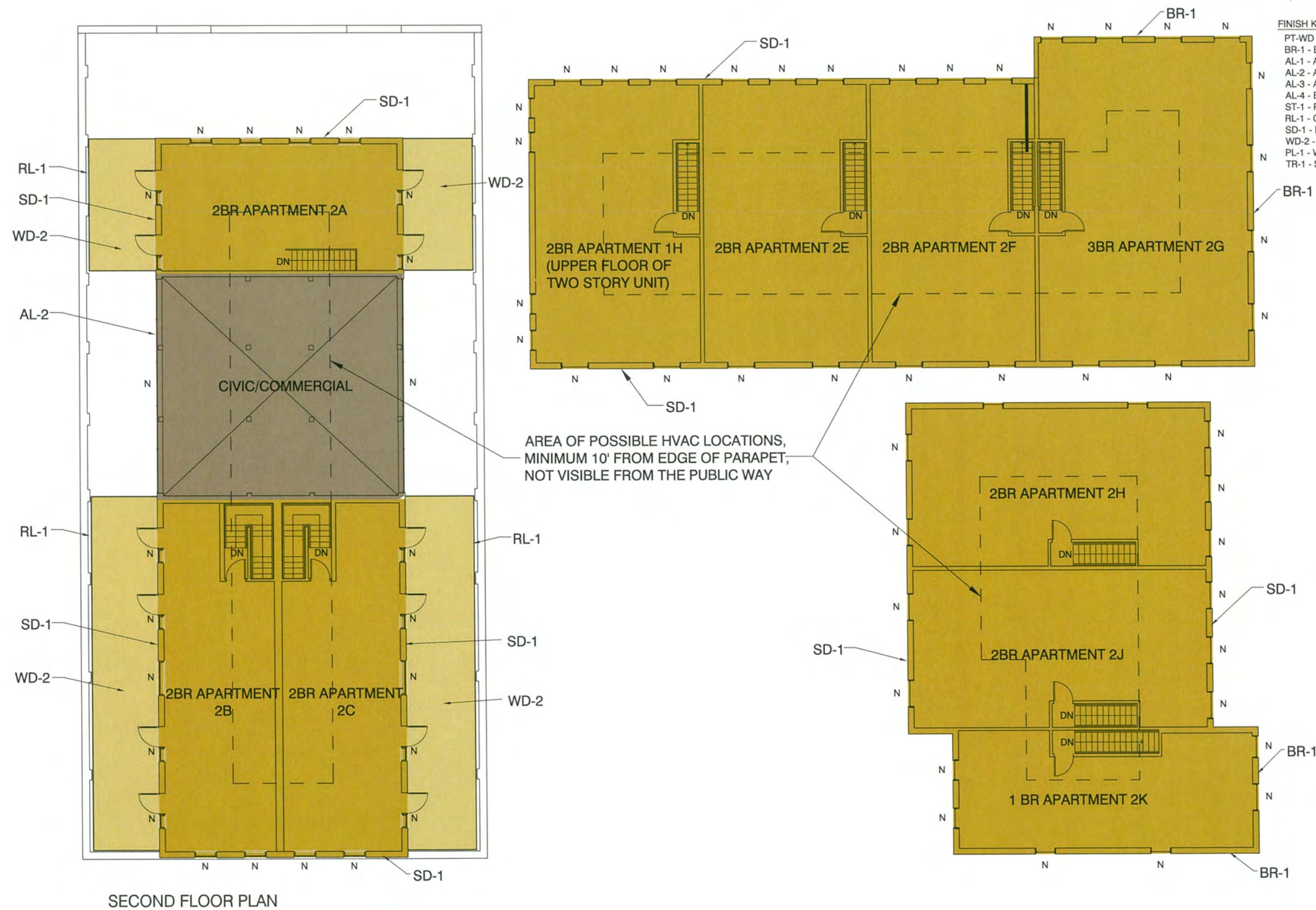


- APERTURE KEY**
 N = NEW
 E = EXISTING
- FINISH KEY**
 PT-WD - PAINTED WOOD
 BR-1 - BRICK, SEE PHOTO/SAMPLE
 AL-1 - ALUMINUM DOOR/WINDOW, SEE CUT SHEET
 AL-2 - ALUMINUM FIN SHADE, SEE CUT SHEET
 AL-3 - ALUMINUM STOREFRONT SYSTEM
 AL-4 - BRONZE ANODIZED ALUMINUM
 ST-1 - PAINTED STEEL AWNING
 RL-1 - GLASS RAIL, SEE CUT SHEET
 SD-1 - HARDI BOARD CLAPBOARDS, SEE CUT SHEET
 WD-2 - PRESSURE TREATED WOOD
 PL-1 - WHITE PAINTED PLASTER
 TR-1 - SMOOTH HARDI BOARD

GROUND FLOOR PLAN

DOOR / WINDOW KEY
 N = NEW
 E = EXISTING
 E/E = EXISTING/EXPANDED

FINISH KEY
 PT-WD - PAINTED WOOD
 BR-1 - BRICK, SEE PHOTO/SAMPLE
 AL-1 - ALUMINUM DOOR/WINDOW, SEE CUT SHEET
 AL-2 - ALUMINUM FIN SHADE, SEE CUT SHEET
 AL-3 - ALUMINUM STOREFRONT SYSTEM
 AL-4 - BRONZE ANODIZED ALUMINUM
 ST-1 - PAINTED STEEL AWNING
 RL-1 - GLASS RAIL, SEE CUT SHEET
 SD-1 - HARDI BOARD CLAPBOARDS, SEE CUT SHEET
 WD-2 - PRESSURE TREATED WOOD
 PL-1 - WHITE PAINTED PLASTER
 TR-1 - SMOOTH HARDI BOARD

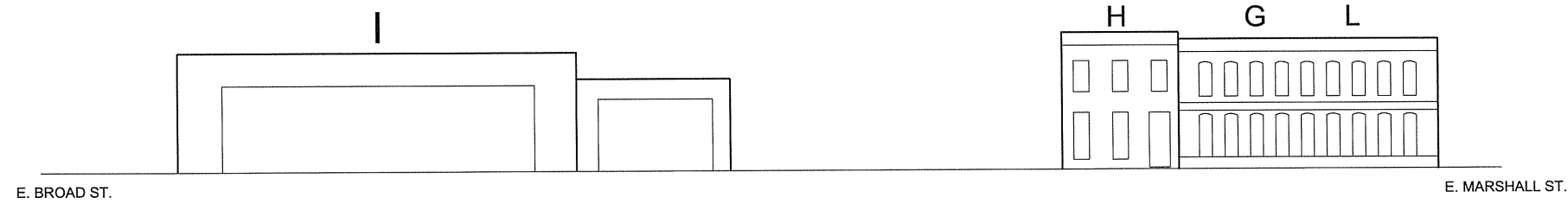


SECOND FLOOR PLAN

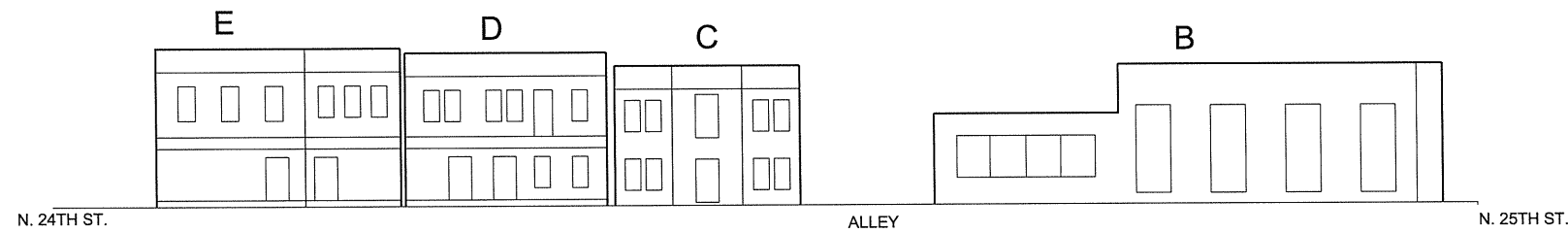
AREA OF POSSIBLE HVAC LOCATIONS,
 MINIMUM 10' FROM EDGE OF PARAPET,
 NOT VISIBLE FROM THE PUBLIC WAY



N. 24TH STREET EAST ELEVATION



N. 24TH STREET WEST ELEVATION



E. MARSHALL NORTH ELEVATION



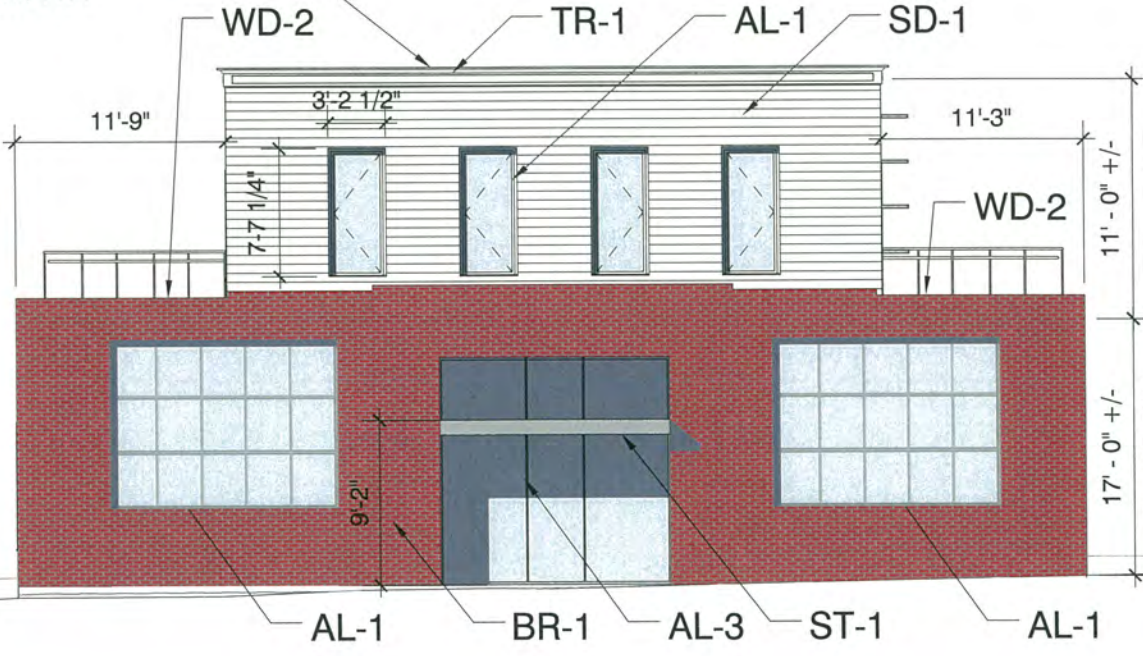
E. MARSHALL SOUTH ELEVATION



WEST ELEVATION



NORTH ELEVATION

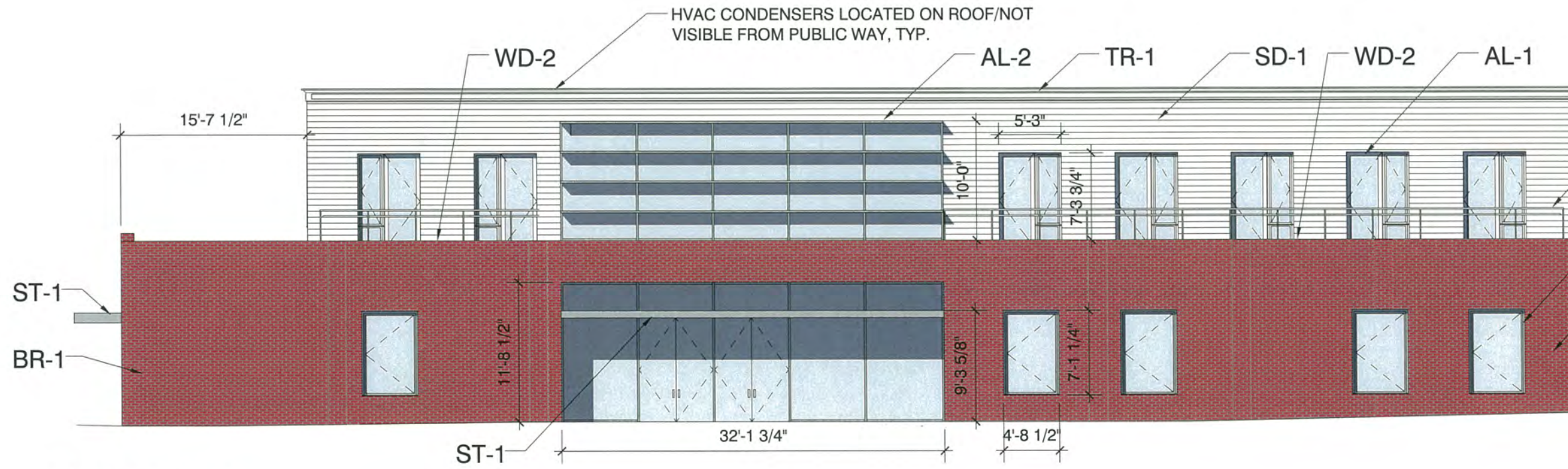


TYPICAL CORNICE DETAIL AT BRICK/SIDING

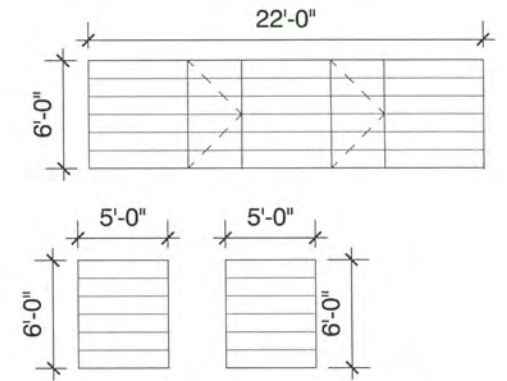
- FINISH KEY**
- PT-WD - PAINTED WOOD
 - BR-1 - BRICK, SEE PHOTO/SAMPLE
 - AL-1 - ALUMINUM DOOR/WINDOW, SEE CUT SHEET
 - AL-2 - ALUMINUM FIN SHADE, SEE CUT SHEET
 - AL-3 - ALUMINUM STOREFRONT SYSTEM
 - AL-4 - BRONZE ANODIZED ALUMINUM
 - ST-1 - PAINTED STEEL AWNING
 - RL-1 - GLASS RAIL, SEE CUT SHEET
 - SD-1 - HARDI BOARD CLAPBOARDS, SEE CUT SHEET
 - WD-2 - PRESSURE TREATED WOOD
 - PL-1 - WHITE PAINTED PLASTER
 - TR-1 - SMOOTH HARDI BOARD

FINISH KEY

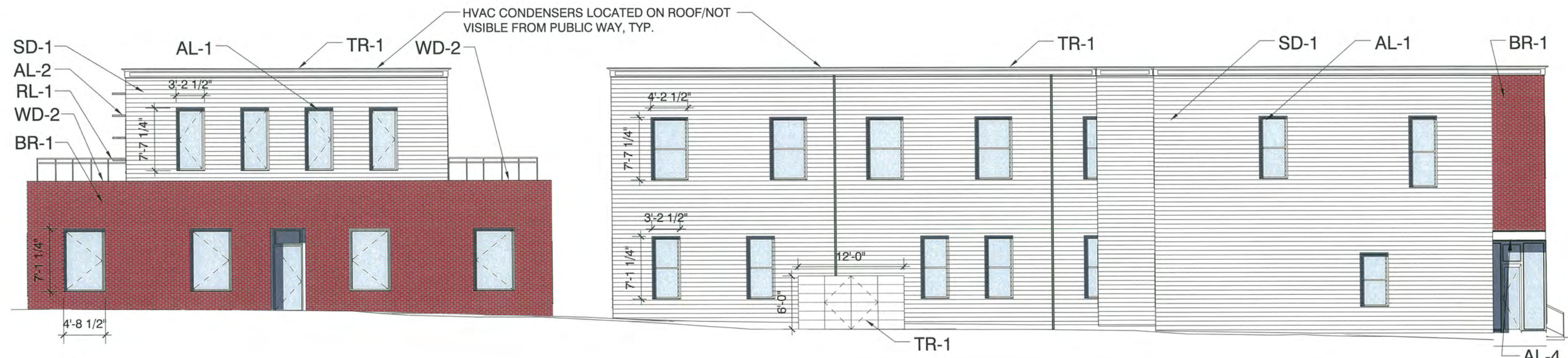
- PT-WD - PAINTED WOOD
- BR-1 - BRICK, SEE PHOTO/SAMPLE
- AL-1 - ALUMINUM DOOR/WINDOW, SEE CUT SHEET
- AL-2 - ALUMINUM FIN SHADE, SEE CUT SHEET
- AL-3 - ALUMINUM STOREFRONT SYSTEM
- AL-4 - BRONZE ANODIZED ALUMINUM
- ST-1 - PAINTED STEEL AWNING
- RL-1 - GLASS RAIL, SEE CUT SHEET
- SD-1 - HARDI BOARD CLAPBOARDS, SEE CUT SHEET
- WD-2 - PRESSURE TREATED WOOD
- PL-1 - WHITE PAINTED PLASTER
- TR-1 - SMOOTH HARDI BOARD



SOUTH ELEVATION

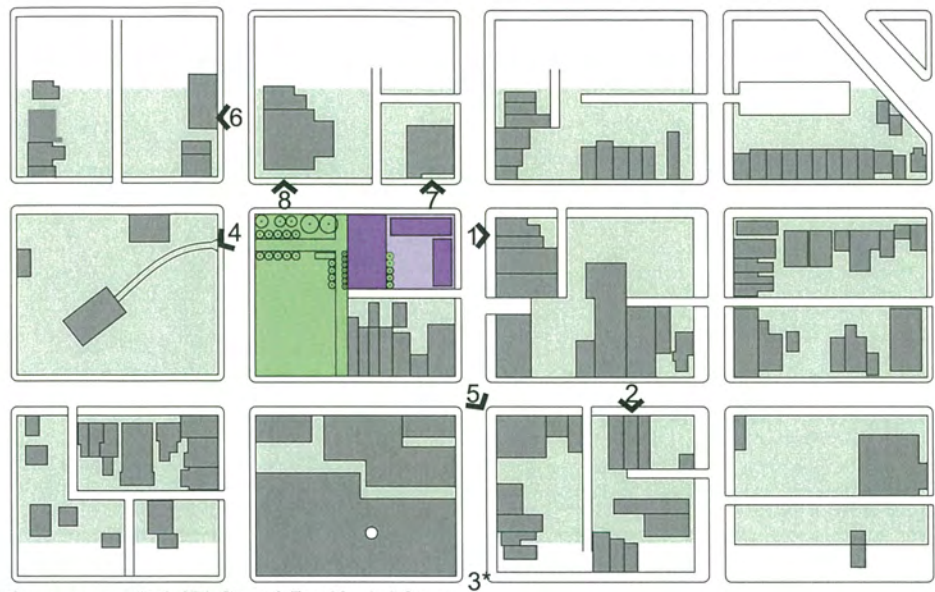


TRASH ENCLOSURE ELEVATION



EAST ELEVATION





*Not shown on map: North 27th Street & East Marshall Street





