

- FAMILY SHELTER - SHARED AREAS & CIRCULATION
3,188SF
- FAMILY SHELTER - UNITS
3,384SF
- MEN'S SHELTER - SHARED AREAS & CIRCULATION
5,454SF
- MEN'S SHELTER - UNITS
6,885SF
- SHELTER PROGRAM AREAS
4,829SF
- STAFF AREA - SHELTER
(SEE ENLARGED DEPARTMENT PLAN)
2,340SF
- STAFF AREA - MAIN OFFICE
(SEE ENLARGED DEPARTMENT PLAN)
5,355SF
- INCLEMENT WEATHER SHELTER
(SEE ENLARGED PLAN)
7,568SF
- RECEPTION
634SF
- BUILDING SUPPORT & MAINTENANCE AREAS
4,170SF
- KITCHEN & PANTRY AREAS
2,417SF

FLOOR PLAN

1
SK-01

SCALE: 1/32" = 1'-0"

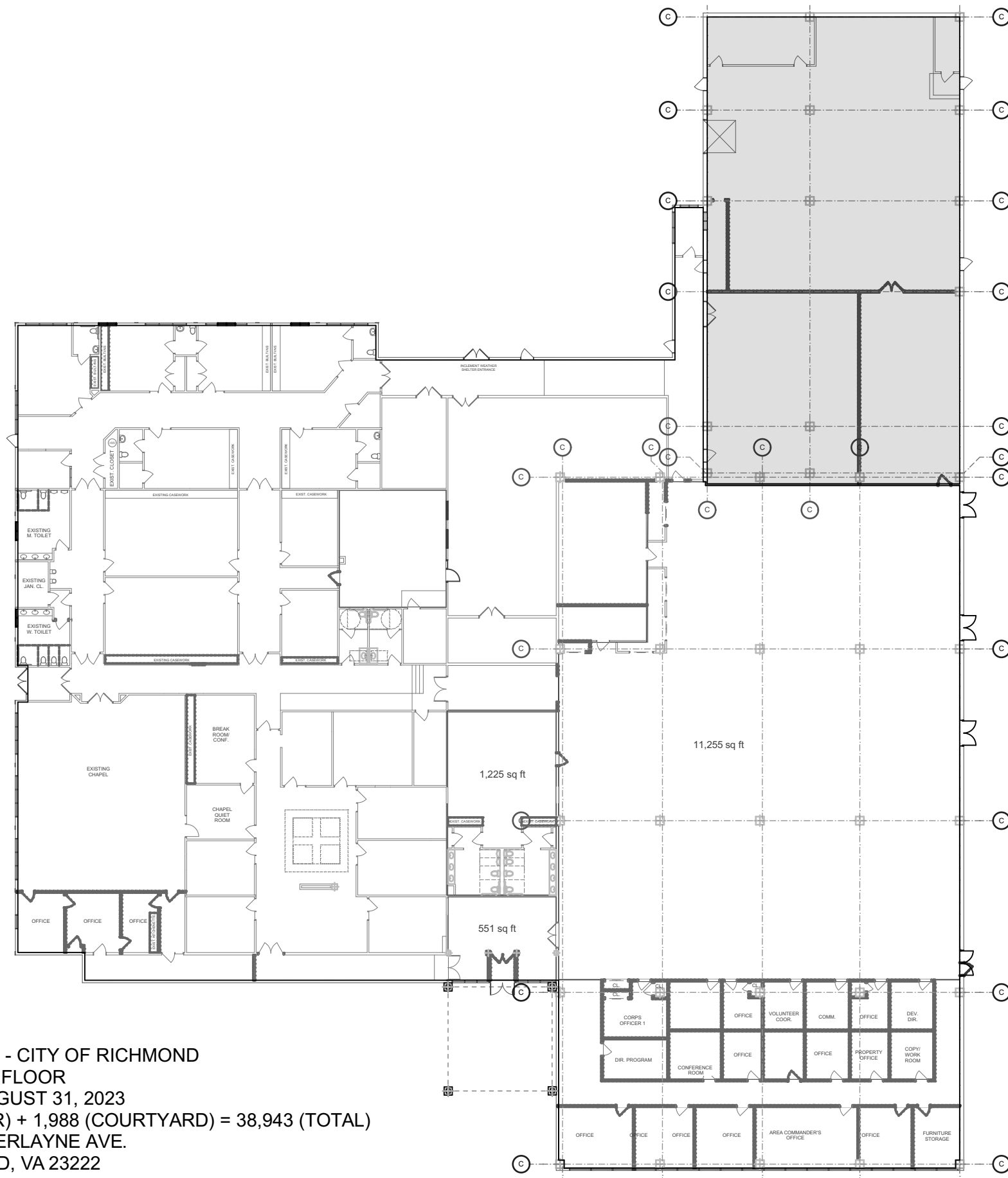
SK-01
6/5/2023

PROJECT NO.: 20019.00

BLOCKING DIAGRAM SALVATION ARMY - CENTER OF HOPE 1900 CHAMBERLAYNE PARKWAY RICHMOND VA 23220

CORNERSTONE ARCHITECTURE
AND INTERIOR DESIGN
211 W 7TH ST, RICHMOND,
VIRGINIA 23224
804.353.3051
WWW.CSARCH.COM





SPACE DELINEATION - CITY OF RICHMOND
 FIRST FLOOR
 REVISED AUGUST 31, 2023
 NET USABLE AREA (SF): 36,955 (INDOOR) + 1,988 (COURTYARD) = 38,943 (TOTAL)
 1900 CHAMBERLAYNE AVE.
 RICHMOND, VA 23222