

AN ORDINANCE No. 87-187-176

ADOPTED SEP 14 1987

To declare that a public necessity exists for the acquisition of permanent and temporary easements for the construction of channel bank lighting of the James River below the City's Deepwater Terminal to enable commercial navigation of said portion of the James River at night in the areas including Drewry's Bluff, Chaffin Bluff, Kingsland Reach, Meade Landing, Proctor's Creek, Dutch Gap, Varina Farm/Jones Neck Cutoff, Mt. Blanco, and Turkey Island Cutoff, as shown shaded on drawings marked "SK-1" through "SK-9", inclusive, dated July 21, 1987, for public purposes and to authorize the negotiations for the acquisition of necessary interest in land for the purpose.

Patron - City Manager

Approved as to form and legality
by City Attorney

WHEREAS, the Council of the City of Richmond, by Resolution No. 87-R69-66, adopted March 9, 1987, entitled: "A Resolution concerning channel lighting on the James River", a copy of which is attached to the draft of this ordinance, authorized acceptance by the City of Richmond of \$500,000 from the Commonwealth of Virginia to provide channel lighting on the James River, for the acquisition of necessary easements, planning, design, engineering and construction of lighting facilities; and

WHEREAS, in the opinion of the Council of the City of Richmond a public necessity exists for the acquisition of permanent easements in land and temporary construction

easements in the areas including Drewry's Bluff, Chaffin Bluff, Kingsland Reach, Meade Landing, Proctor's Creek, Dutch Gap, Varina Farm/Jones Neck Cutoff, Mt. Blanco, and Turkey Island Cutoff, as shown shaded on drawings marked "SK-1" through "SK-9", inclusive, dated July 21, 1987, for the purpose of providing channel lighting for night-time commercial navigation of the James River; and

WHEREAS, the public necessity requires the acquisition by the City of Richmond of the necessary interests in land, permanent and temporary easements, located in the areas above-identified for the purpose; NOW, THEREFORE, THE CITY OF RICHMOND HEREBY ORDAINS:

§ 1. That permanent and temporary easements in land in the areas including Drewry's Bluff, Chaffin Bluff, Kingsland Reach, Meade Landing, Proctor's Creek, Dutch Gap, Varina Farm/Jones Neck Cutoff, Mt. Blanco, and Turkey Island Cutoff, as shown shaded on drawings marked "SK-1" through "SK-9", inclusive, dated July 21, 1987, copies of which drawings are attached to the draft of this ordinance, are required for construction of and providing channel lighting on the James River, and the City Manager, or such person or entity as he may designate, be and is hereby authorized and directed to negotiate for the acquisition by gift, purchase, condemnation or otherwise for the easements in land required for such purpose.

§ 2. No concluded action shall be taken toward the acquisition of permanent and temporary easements in the land by purchase until the price at which same can be acquired shall have been reported to and the purchase of the same at said price has been authorized by the Council; nor shall the easements in land be acquired by condemnation proceedings unless so authorized by the Council and the condemnation award or awards therefor approved by the Council.

§ 3. This ordinance shall be in force and effect upon adoption.

OFFERED FEB 23 1987

A RESOLUTION No. 87-R69-66

ADOPTED MAR 9 1987

Concerning channel lighting on the James River.

PUBLIC HEARING ~~MAR~~ 9 1987 AT 7 P.M.

Patron - City Manager

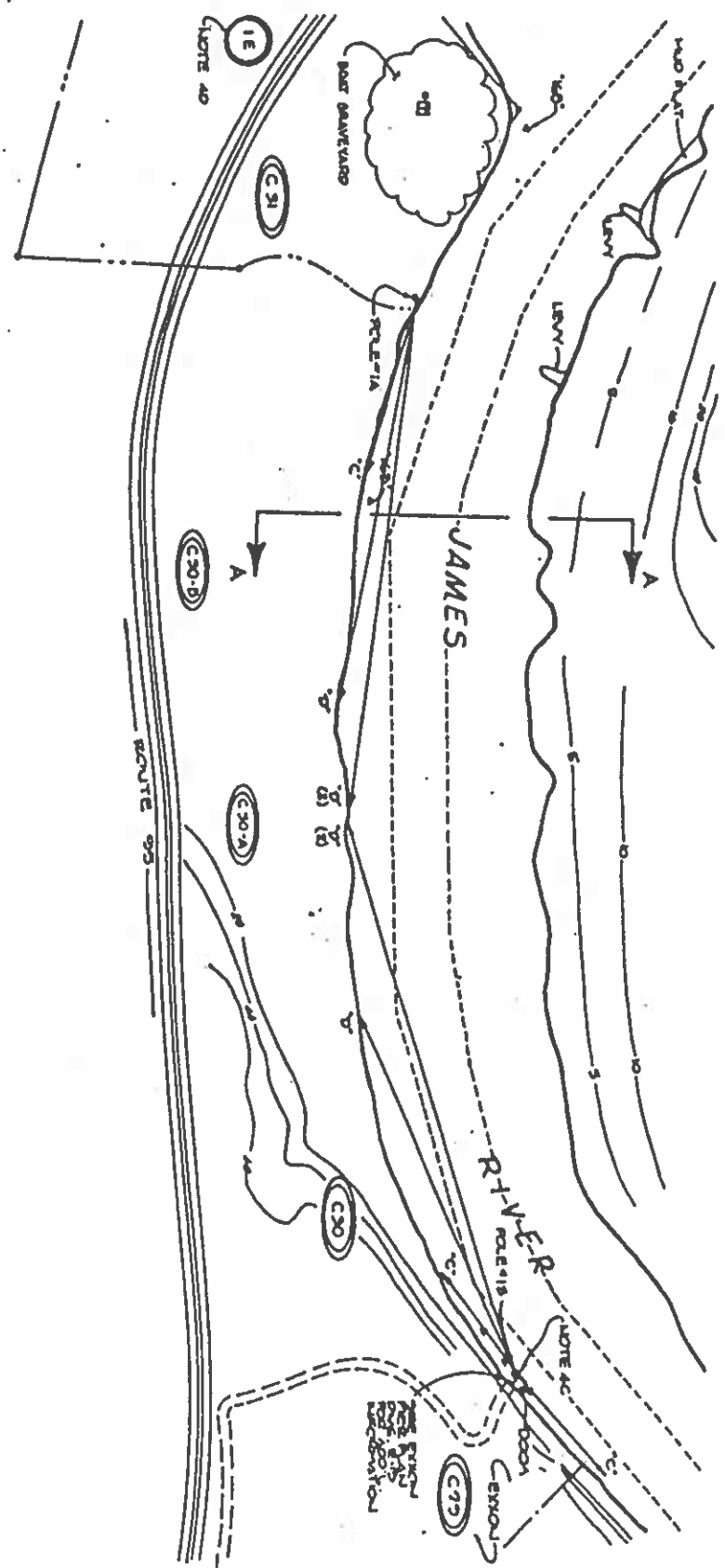
WHEREAS, the Commonwealth of Virginia, acting by and through the General Assembly and with the approval of the Governor in the Appropriation Act for the two years ending respectively on the 30th day of June, 1987, and the 30th day of June, 1988, Chapter 643 of the Acts of Assembly of 1986 in Section 1-118, Virginia Port Authority (407), appropriated as part of Item 643 the sum of \$500,000 in the fiscal year commencing July 1, 1986, and ending June 30, 1987, for the support of channel lighting on the James River; and

WHEREAS, it is the consensus of Council that the City Manager, or his designee, should be authorized to accept the funds so allocated for the purpose of channel lighting on the James River and that the funds should be deposited in a special account and disbursed solely for the purpose of carrying out such project; NOW, THEREFORE,

BE IT RESOLVED BY THE COUNCIL OF THE CITY OF RICHMOND:

1. That the City Manager, or his designee, be and is hereby authorized to accept from the Commonwealth of

INDICATES CENTERLINE
OF 15'-0" WIDE
EASEMENT

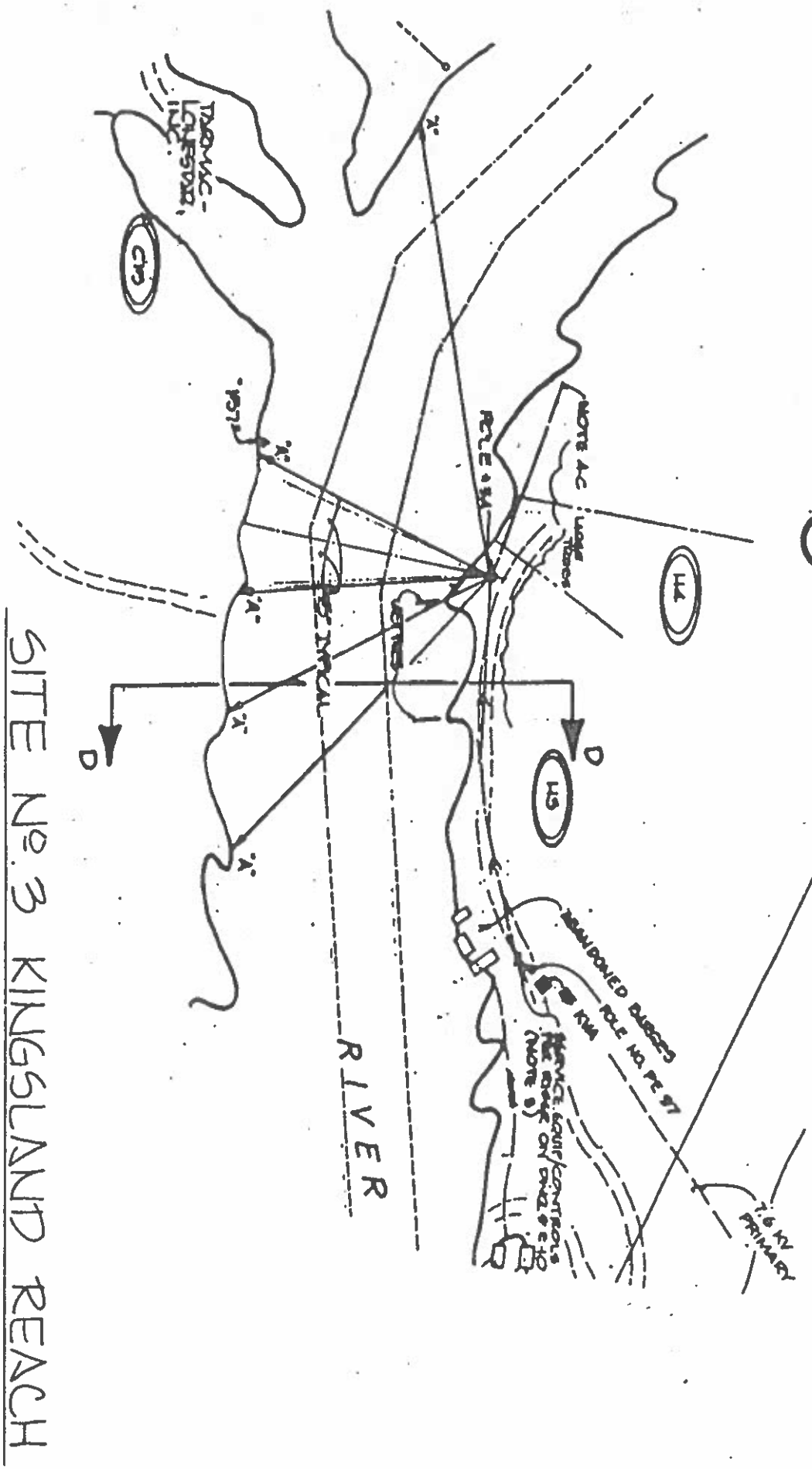


SITE NO. 1
DREYRYS BLUFF

<p>JAMES RIVER NAVIGATIONAL BANKLIGHTING PORT OF RICHMOND RICHMOND, VIRGINIA</p>		<p>MASTER ENGINEERS AND DESIGNERS, P.C.</p>		<p>MECHANICAL ELECTRICAL ENGINEERS</p>	
<p>RICHMOND/LYNCHBURG, VA</p>		<p>DATE: 7-21-87</p>	<p>SCALE: APPROX. 1" = 650'</p>	<p>DES: WTP</p>	<p>COMM NO: 233-003</p>
<p>APFD: WTP</p>	<p>DWN: RCB</p>	<p>DWG. NO: SK-1</p>			

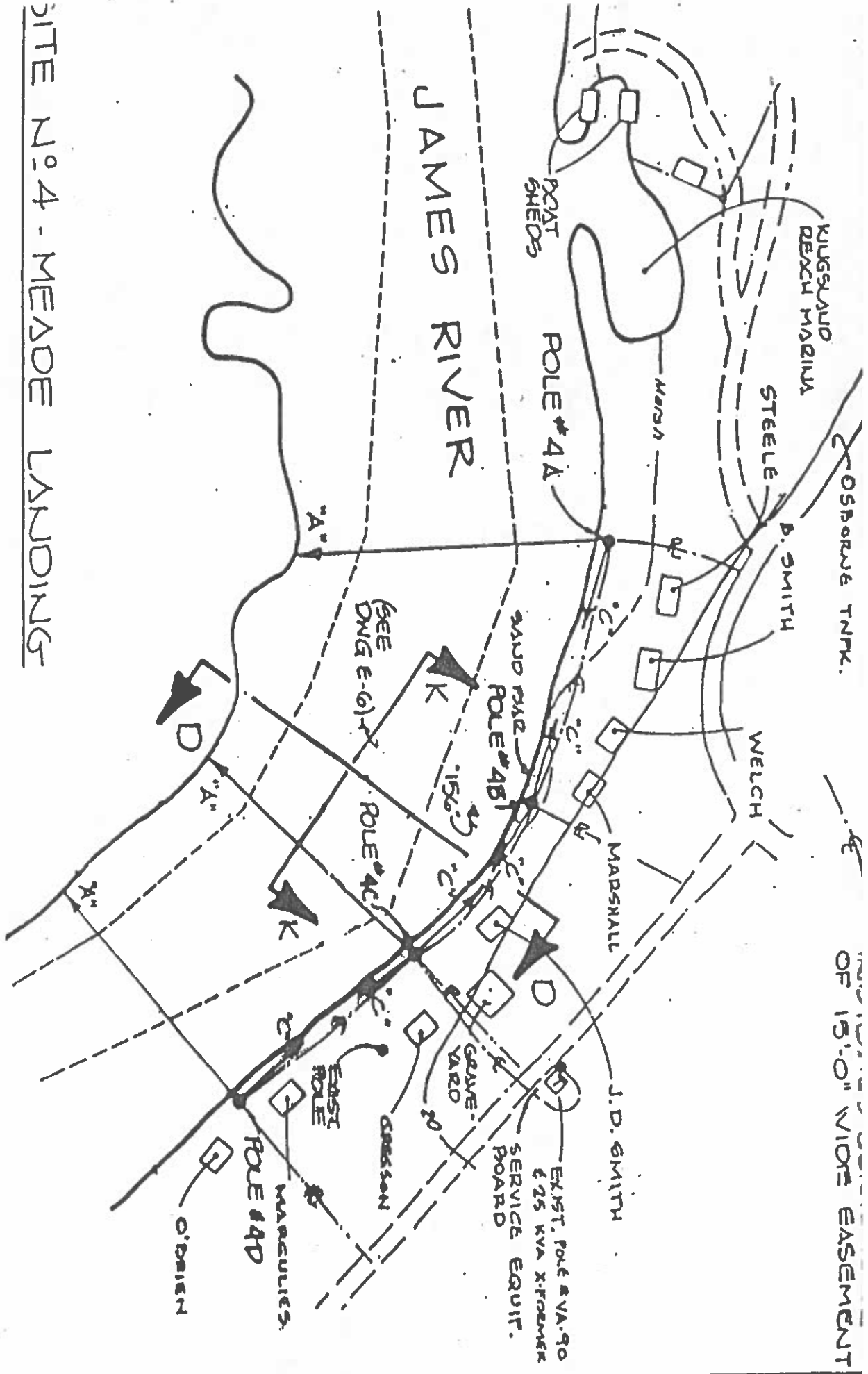
2E
A — NOTE 40

INDICATES CENTERLINE
OF 15'-0" WIDE EASEMENT



SITE NO. 3 KINGSLAND REACH

<p>JAMES RIVER NAVIGATIONAL BANKLIGHTING PORT OF RICHMOND RICHMOND, VIRGINIA</p>		<p>MASTER ENGINEERS AND DESIGNERS, P.C. Mechanical Electrical Engineers RICHMOND/VIRCHBURG, VA</p>	
DATE: 7-21-87	SCALE: 1" = APPROX.	DES: WTP	COMM NO: 253-005
DWN: RCB		DWG. NO:	5K-3
AFT'D: WTP			



SITE NO 4 - MEADE LANDING

JAMES RIVER NAVIGATIONAL BANKLIGHTING PORT OF RICHMOND RICHMOND, VIRGINIA	MASTER ENGINEERS AND DESIGNERS, P.C. RICHMOND/VIRGINIA, VA	MECHANICAL ELECTRICAL ENGINEERS	DATE: 7-21-87	SCALE: 1" = 500' APPROX.
			DES: VTP	COMM NO: 233-003
	DWG: LDC	DWG. NO:	APP'D: WTP	SK-4

OF 15'-0" WIDE EASEMENT

JAMES RIVER
 NAVIGATIONAL BANKLIGHTING
 PORT OF RICHMOND
 RICHMOND, VIRGINIA

MASTER
 ENGINEERS AND
 DESIGNERS, P.C.

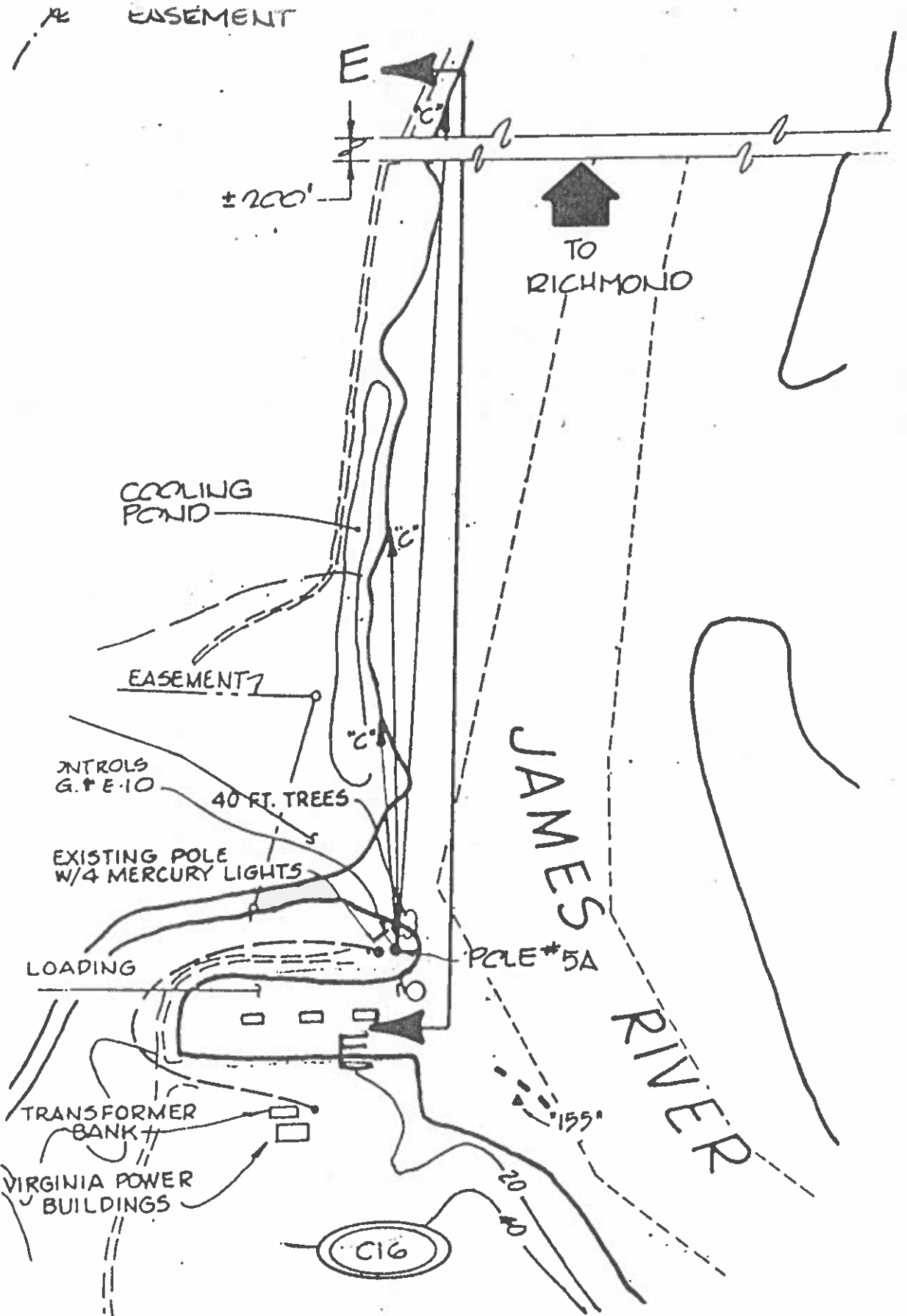
RICHMOND/VA/CHESAPEAKE, VA

MECHANICAL
 ELECTRICAL
 ENGINEERS

DATE: 7-21-87
 DES: WTP
 DWN: LOC
 APT'D: WTP

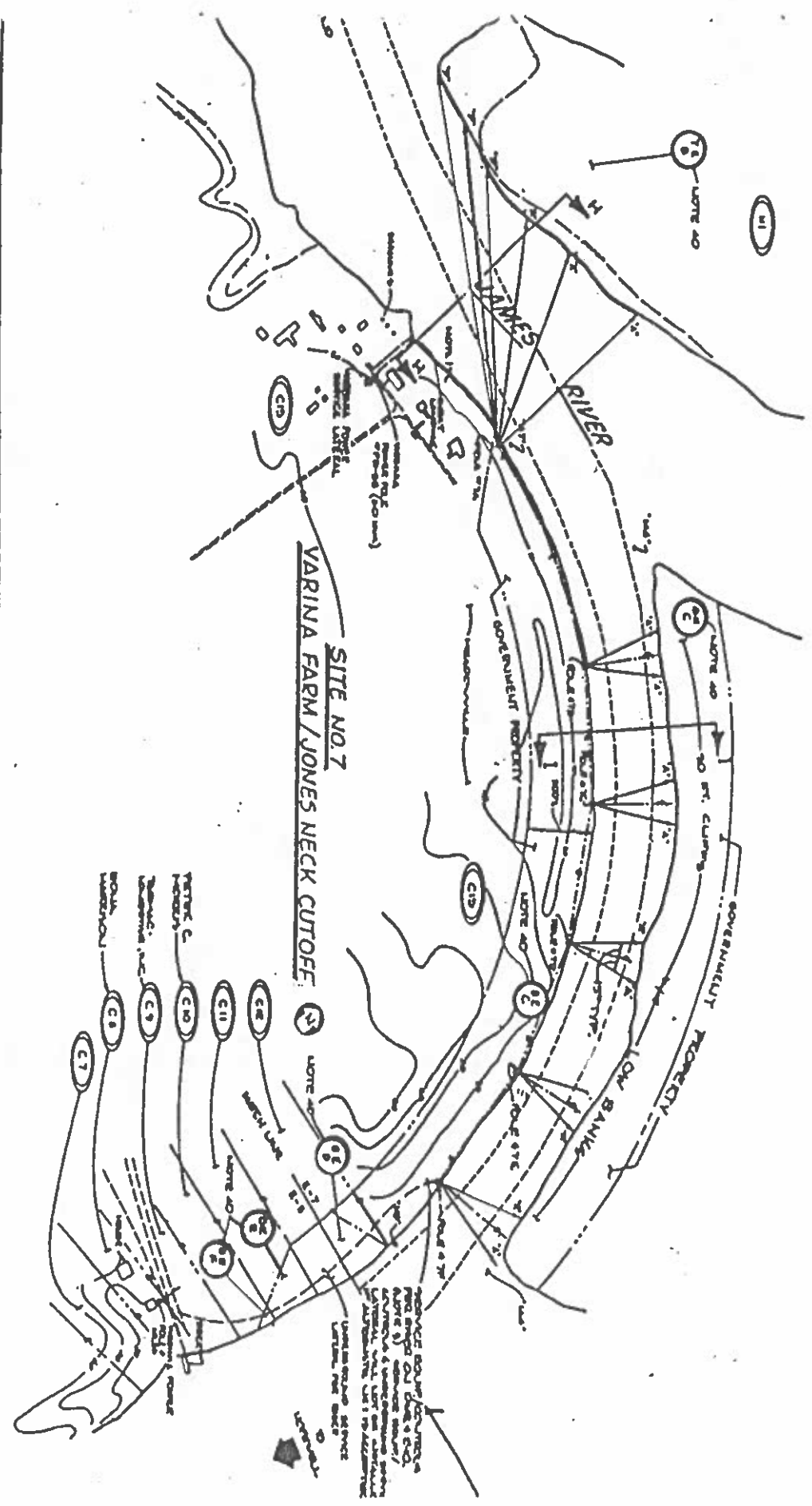
SCALE: 1" = 300'
 COMM NO: 233-003
 DWA. NO:

SK-5



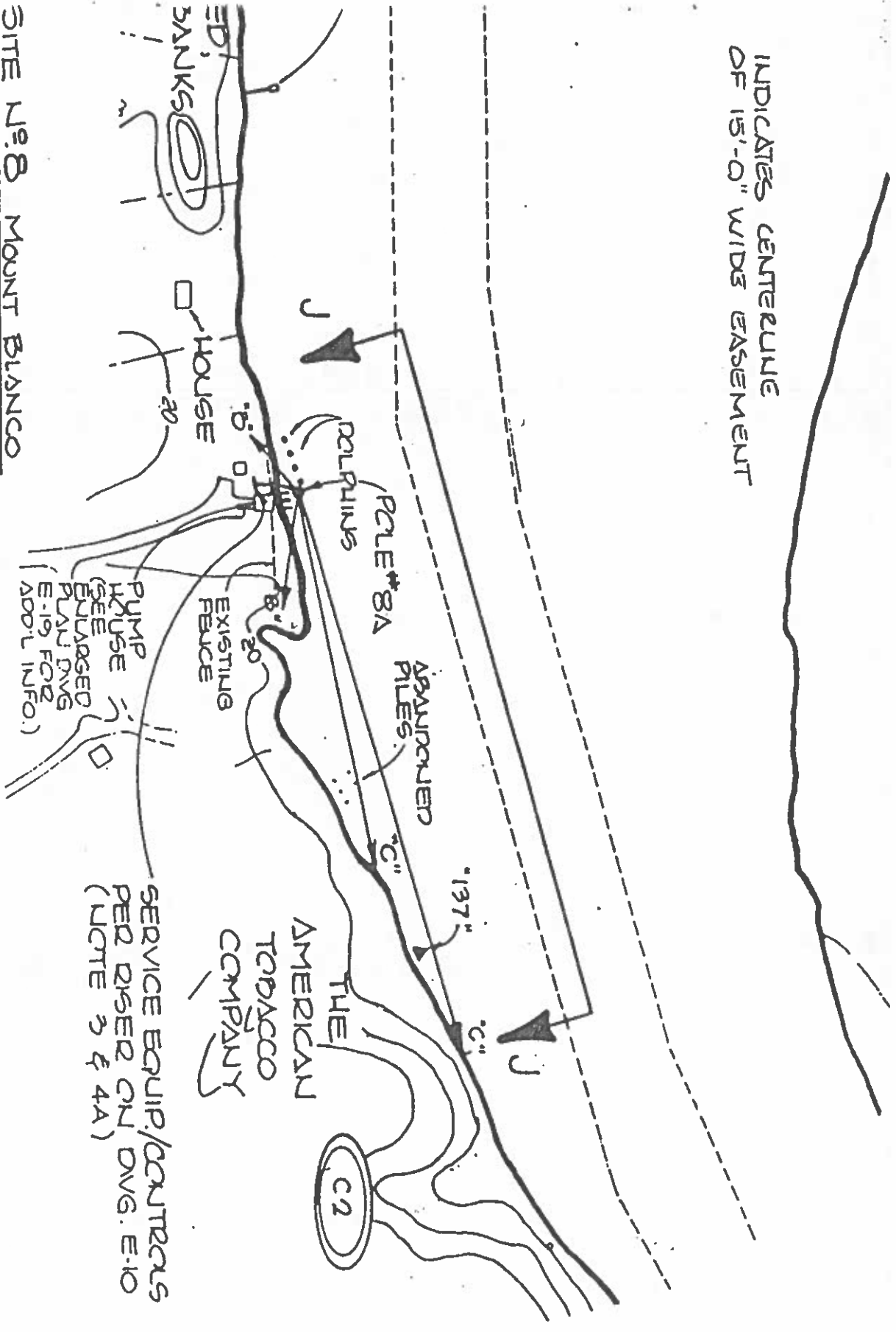
SITE No 5 - PROCTORS CREEK

INDICATES CENTERLINE
OF 15'-0" WIDE
EASEMENT



JAMES RIVER NAVIGATIONAL BANKLIGHTING PORT OF RICHMOND RICHMOND, VIRGINIA		MASTER ENGINEERS AND DESIGNERS, P.C. RICHMOND/LYNCHBURG, VA		MECHANICAL ELECTRICAL ENGINEERS	
DATE: 7-21-87	SCALE: APPROX.				
DES: WTP	COMM NO: 253-005				
DWN: RCB	DWG. NO:				
APP'D: WTP	SK-7				

INDICATES CENTERLINE
OF 15'-0" WIDE EASEMENT



SERVICE EQUIP./CONTRAS
PER RISED ON DVG. E-10
(NOTE 3 & 4A)

SITE N^o 8 MOUNT BLANCO

JAMES RIVER
NAVIGATIONAL BANKLIGHTING
PORT OF RICHMOND
RICHMOND, VIRGINIA

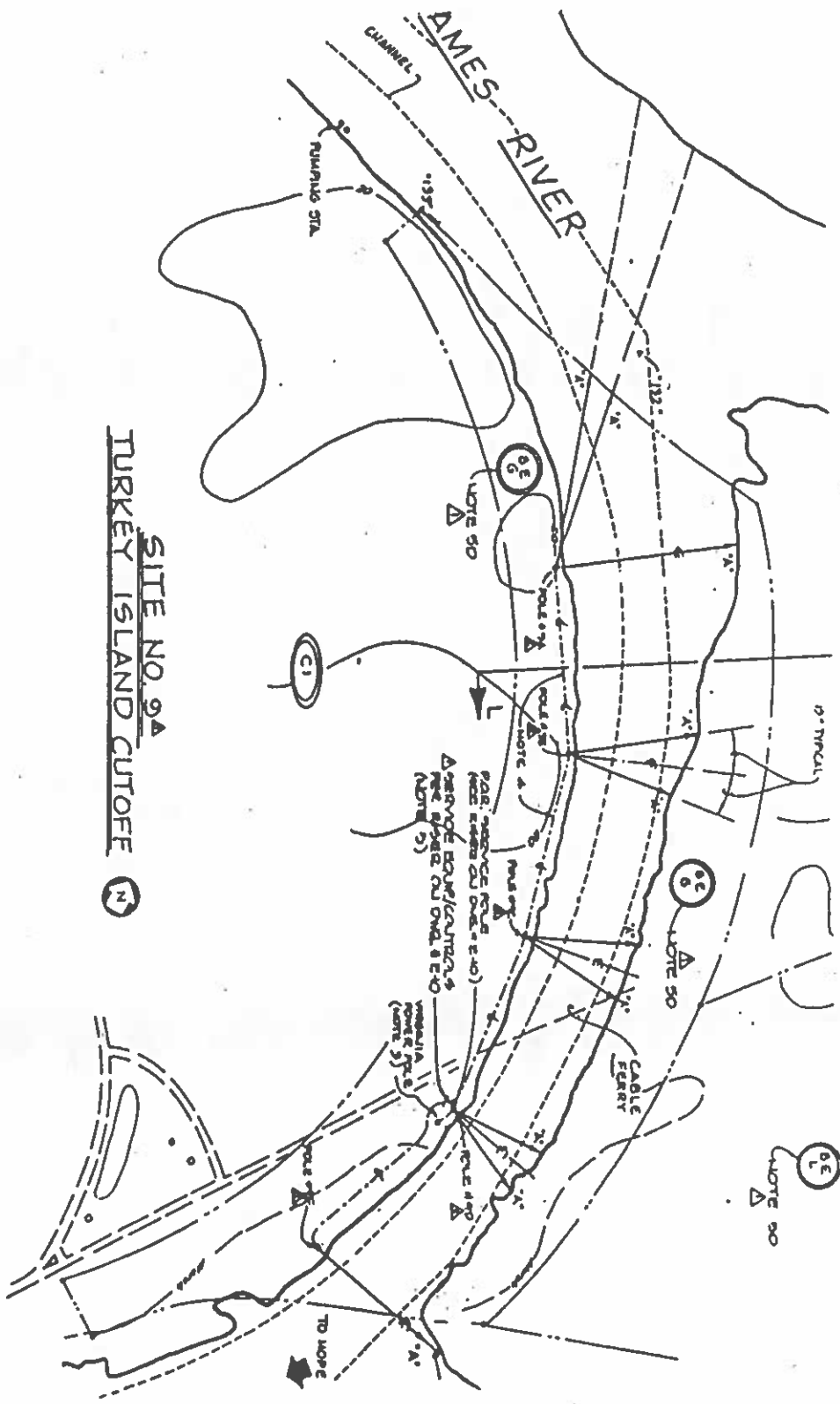
MASTER
ENGINEERS AND
DESIGNERS, P.C.

MECHANICAL
ELECTRICAL
ENGINEERS

RICHMOND/Lynchburg, VA

DATE: 7-21-87	SCALE: 1" = 300'
DES: WTP	COMM NO.: 233-003
DWN: LDC	DWG. NO:
APP'D: WTP	SK-8

INDICATES CENTERLINE
OF 15'-0" WIDE EASEMENT



SITE NO. 9A
TURKEY ISLAND CUTOFF

JAMES RIVER
NAVIGATIONAL BANKLIGHTING
PORT OF RICHMOND
RICHMOND, VIRGINIA

MASTER ENGINEERS AND DESIGNERS, P.C.
MECHANICAL ELECTRICAL ENGINEERS

RICHMOND/VYACHESBURG, VA

DATE: 7-21-87	SCALE: APPROX. 1"=650'
DES: W/TTP	COMM NO: 233-005
DWN: RCB	DWG. NO: SK-9
AFT'D: W/TTP	