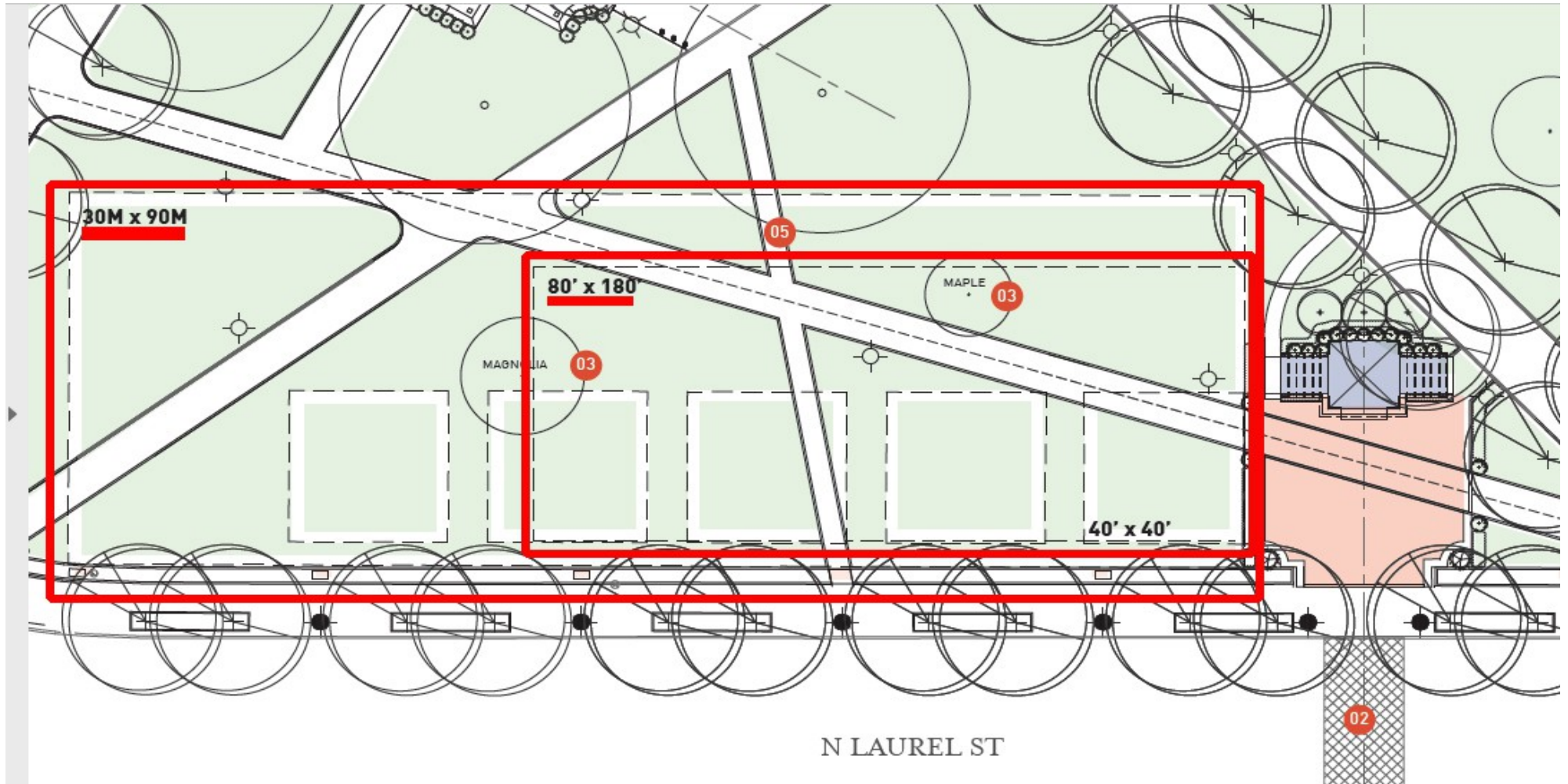


Location, Character and Extent of proposed tenting and pavilion are not in keeping with Monroe Park Master Plan



Location and extent of the proposed tenting are inappropriate: would require magnificent Magnolia and Maple trees to be cut down – both species approved by UDC in Master Plan



MAGNOLIA

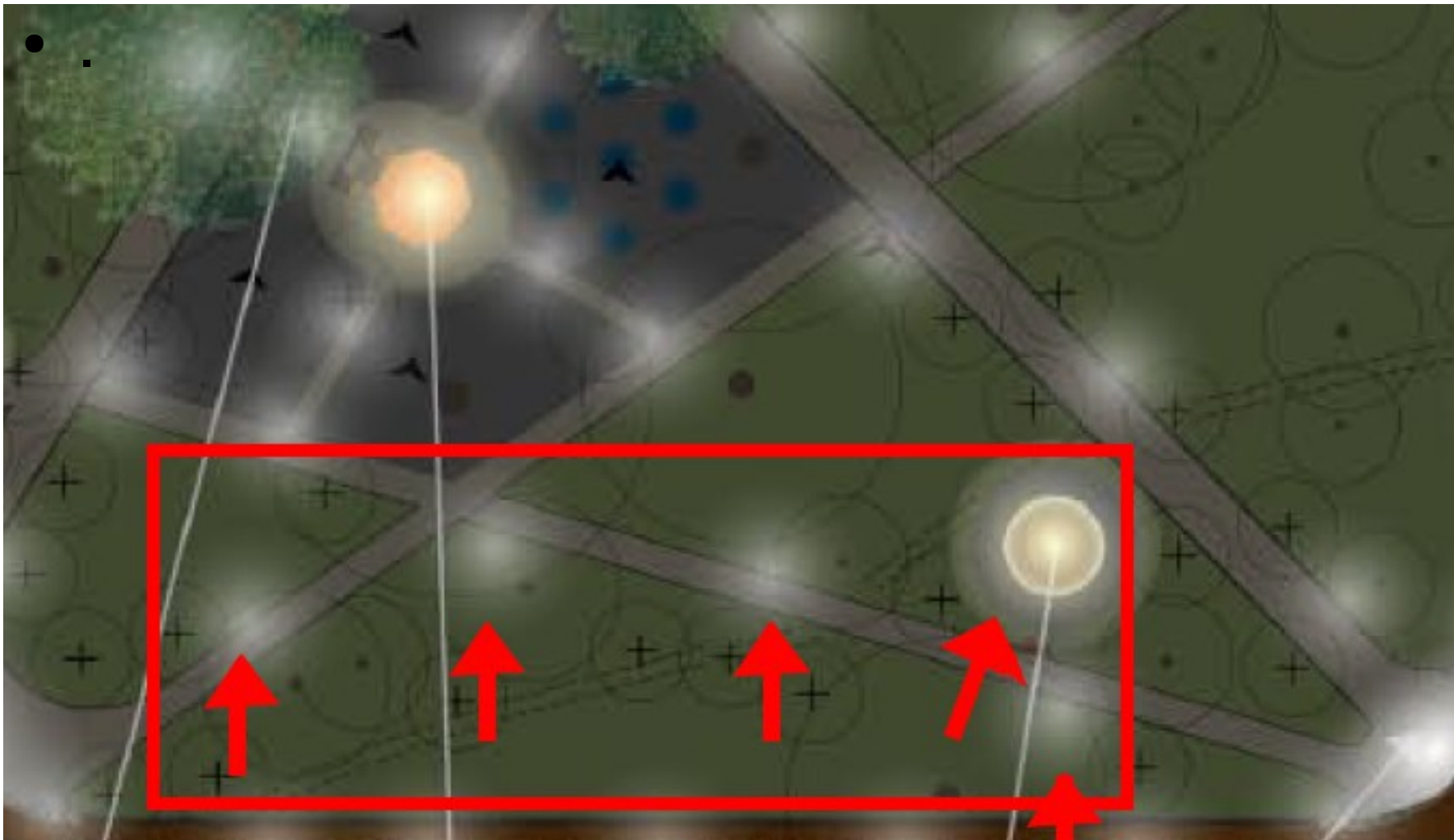


MAPLE

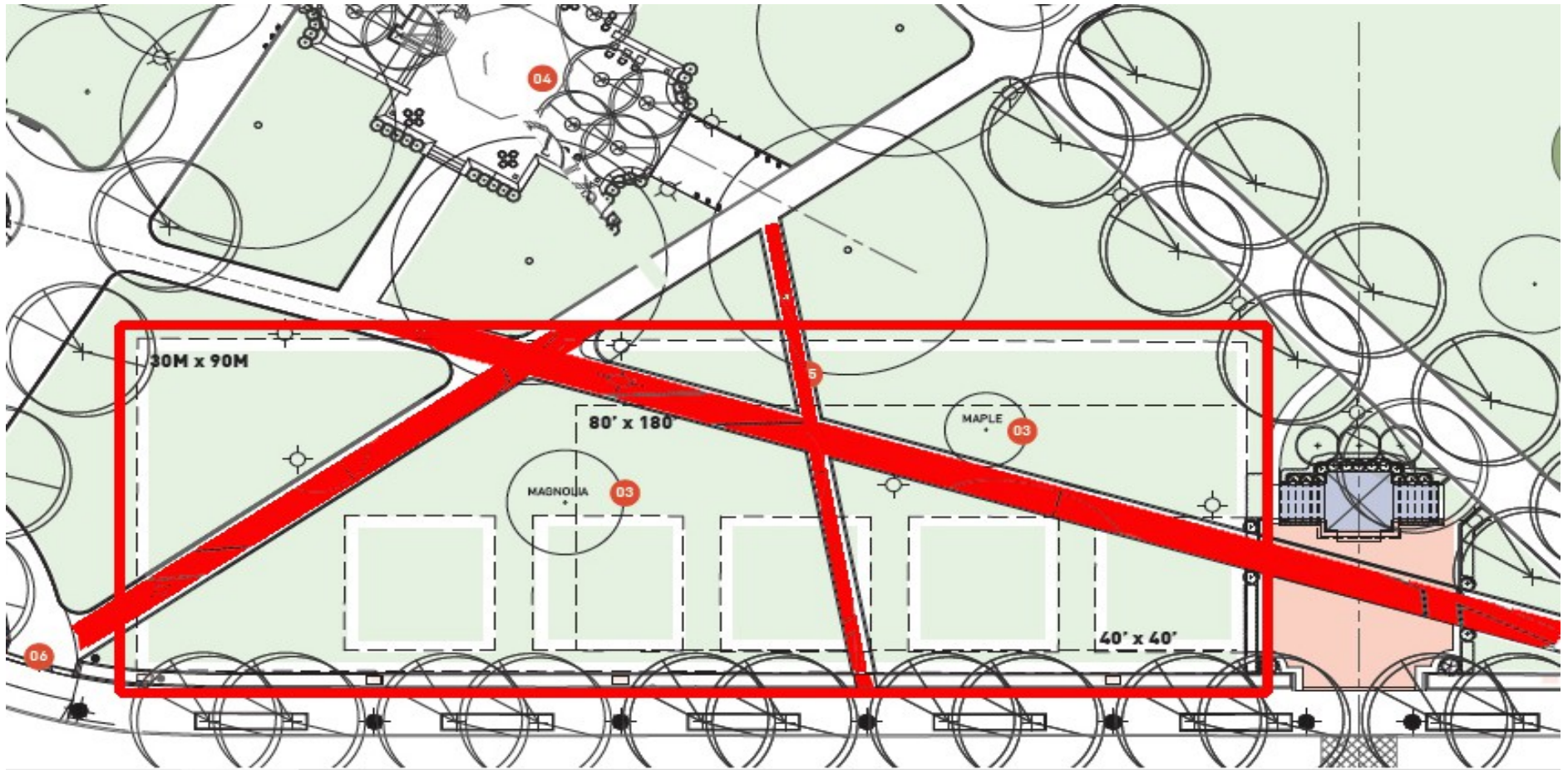
Location and extent of proposed tenting are inappropriate: would eliminate the resources for children, including the carousel, already approved by the UDC in the Monroe Park Master Plan



Location and extent of proposed tenting are inappropriate: proposed tents would displace 5 lamp posts from the careful lighting plan already approved by UDC



Location and extent of proposed tenting are inappropriate: would block Victorian pathways and public use of park.



Character of huge tents is inappropriate: blocking views, sight-lines, walkways, and public use of Victorian Monroe Park



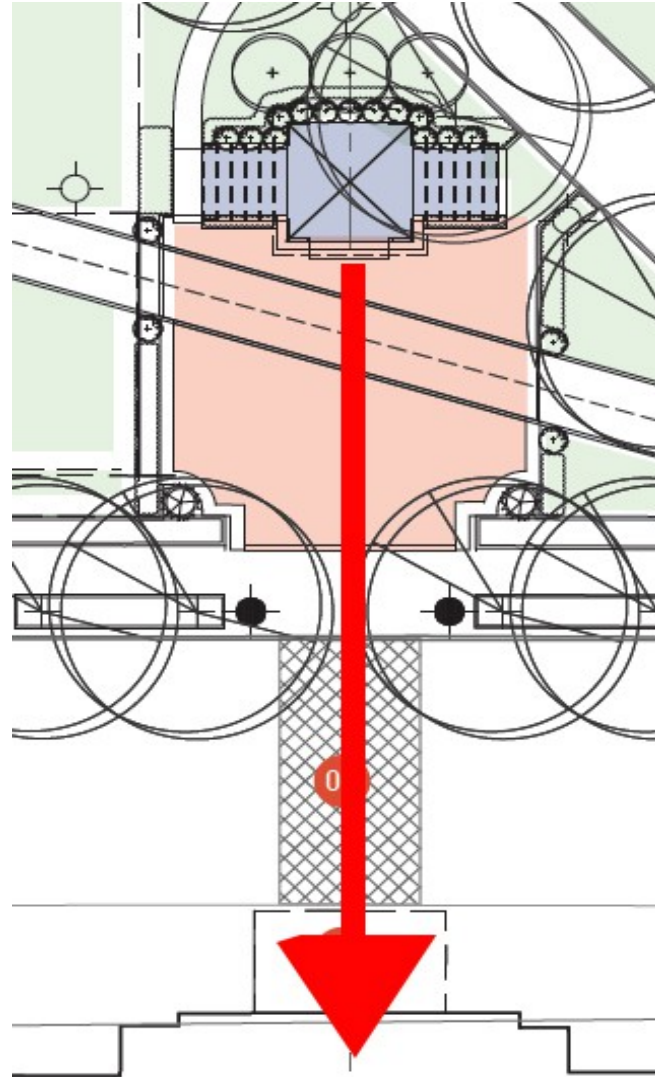
Extent of size of tents is inappropriate: proposed 295' tent would be 95' longer than Altria Theater and hold 3,000 people in 2/3 acre. Victorian Monroe Park is not appropriate for corporate conventions.



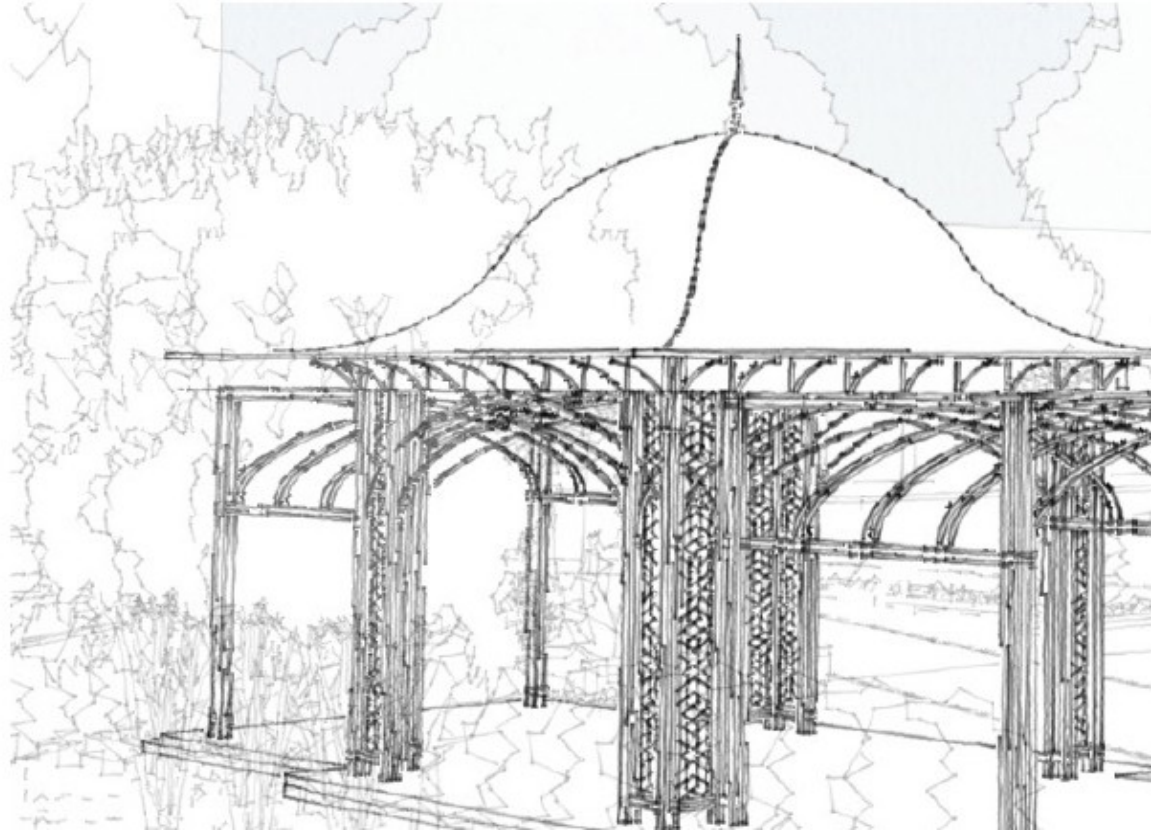
The Altria Theater has a 200 foot frontage.

Unreasonably large tents are proposed for Monroe Park that are 295 feet long.

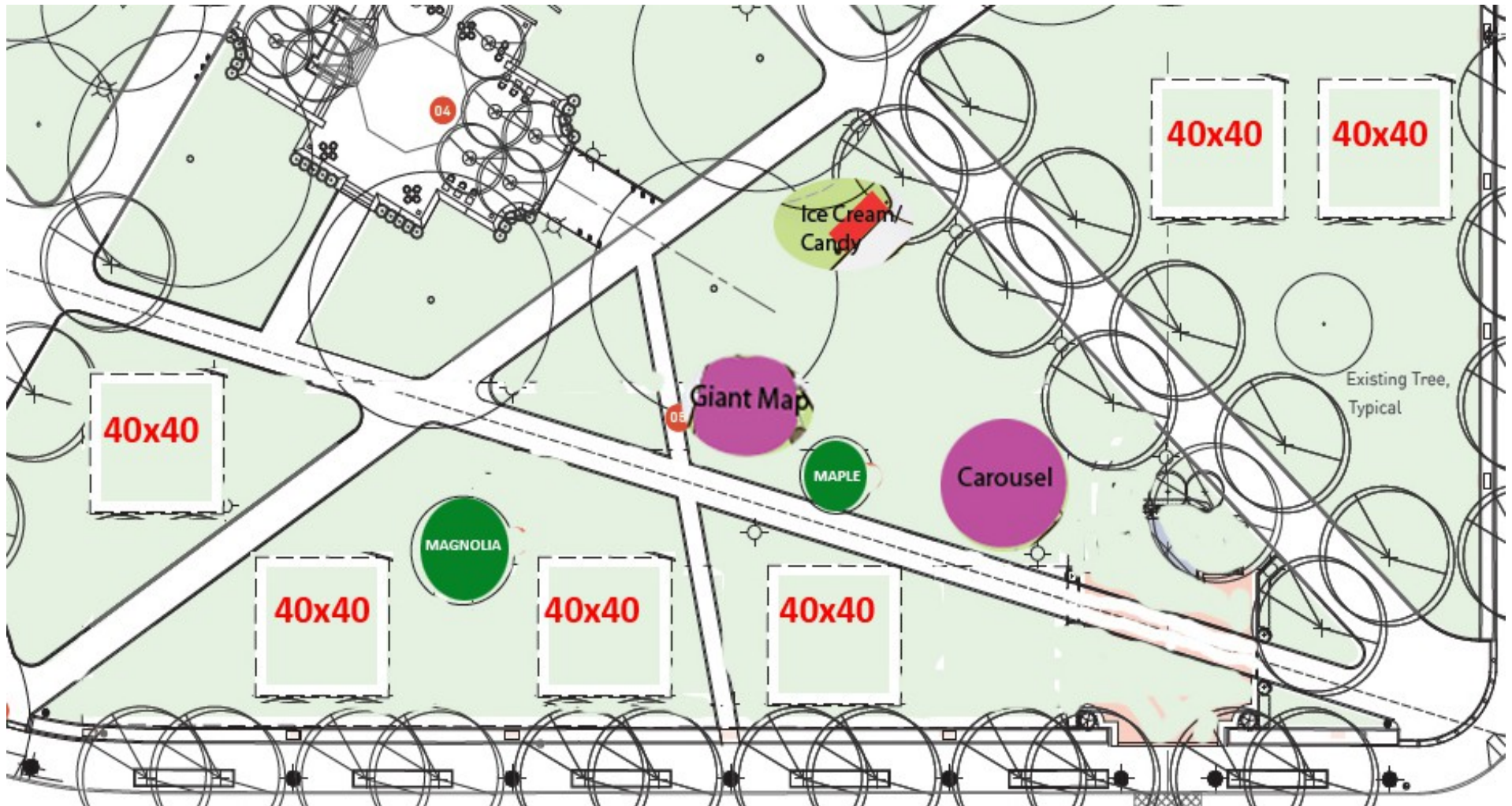
Location of pavilion is inappropriate: on the edge of the park orienting towards the Altria Theater rather than Monroe Park



**Character of pavilion is inappropriate:
primary architectural design references the
1925 Moorish-Revival Altria Theater --
outside of 1876-1907 Period of Significance of
the Victorian Monroe Park**



This ALTERNATIVE PLAN could locate six 40x40 tents for 1,000 people without impacting trees, lighting, walkways, carousel, or Monroe Park Master Plan



Please place reasonable UDC restrictions on the proposed Laurel St. Venue:

- 1. Location of tenting limited to areas where mature trees, carousel, walkways, and lighting (as approved in the Monroe Park Master Plan) will not be impacted**
- 2. Extent of size of tenting limited to 40 x 40 feet**
- 3. Extent of duration of tenting limited to five weekends per year**
- 4. No pavilion located near the edge of the park or orienting to the Altria Theater outside of the park**
- 5. No pavilion conflicting in character with the period of significance of Victorian Monroe Park**